



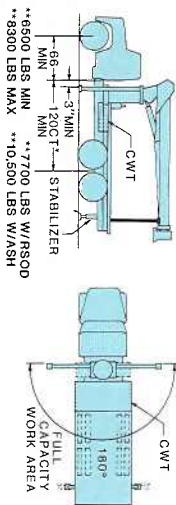
## National Series 600B Truck/Crane Specifications

### Truck Specifications

The 600B can be mounted in several configurations, including the one shown below. Your National dealer can provide you with detailed information about alternative configurations (with and without torsion boxes, rear mounts, etc.). Specifications vary, depending on the configuration utilized. The mounting configuration below is based on an 85% stability factor. The complete unit must be installed in accordance with factory requirements, and a test must be performed to determine actual stability and counterweight requirements since individual truck chassis vary.

This configuration allows installation on a tandem rear axle chassis with considerably less frame strength by using the standard subbase. In most cases, the chassis will not require reinforcing and the amount of counterweight is reduced, increasing the truck's payload. Requires standard subbase, rear ASH stabilizers, and usually counterweight in the bed or subbase centered near the crane frame. Full capacity work area is the rear 180° of the vehicle, from outrigger to outrigger.

Gross Vehicle Weight Rating (GVWR) .....	46,000 lbs.
Gross Axle Weight Rating (GAWR), Front .....	12,000 lbs.
Gross Axle Weight Rating (GAWR), Rear .....	34,000 lbs.
Wheelbase (WB) .....	222" on Model 666B*
Cab to Axle/Trunnion (CA/CT) .....	156" on Model 666B*
Frame Section Modulus (SM) over Rear Stabilizers .....	180-inch³
50,000 PSI .....	15.0-inch³
or	
110,000 PSI .....	6,500 lbs. minimum
Stability Weight, Front .....	8,300 lbs. maximum
Stability Weight, Rear .....	10,500 lbs. w/ASH stabilizers
Estimated Average Final Weight .....	7,700 lbs. w/RSOD stabilizers
	30,000 lbs.



(Model 666B shown)

- \* Shorter WB and CA/CT trucks may be used with shorter boom-length cranes (Models 638B, 647B, and 656B).
- \*\* Estimated axle scale weights prior to installation of crane, stabilizers and subbase if required for 85% stability.

### Notes:

- GAWR means Gross Axle Weight Rating and is dependent on all components of the vehicle, such as axles, tires, springs, frame, etc., meeting manufacturer's recommendations. **Always specify GAWR when purchasing trucks.**
- Minimum axle requirements may increase with the use of longer wheelbase, service bodies, diesel engines, or front stabilizers.
- Tandem axle trucks must be used for hauling larger payloads.
- Diesel engines require variable speed governor and electric engine shut-off.

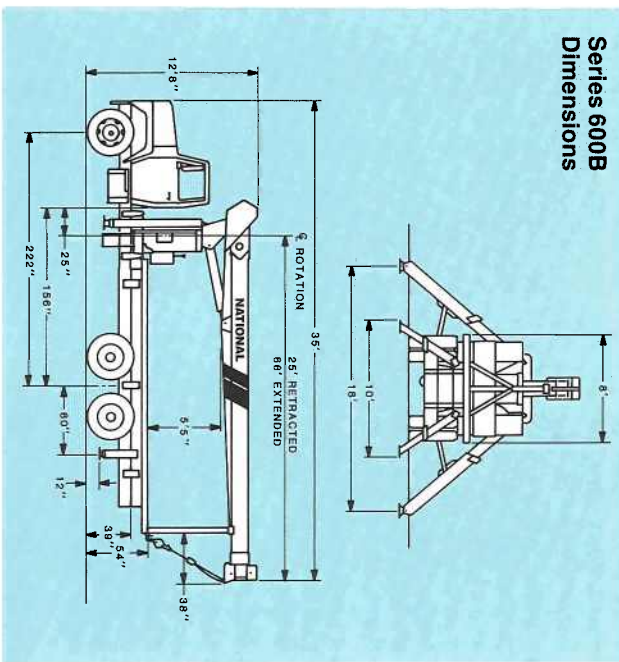


**NATIONAL CRANE**

General Offices: 11200 North 148th Street / Waverly, NE 68462  
Phone: 402-786-6300 / Telex: 438061 / FAX: 402/786-6363

National reserves the right to change designs, prices, and specifications at any time without notice.

### Series 600B Dimensions



### Optional Equipment

- Remote controls (Models R3, R4)
- Burst-of-speed planetary winch feature for faster, more efficient pay-out and pick-up of cable (Model BOS)
- One-person fiberglass basket (Models B1, B1-L)
- Two-person basket (Model BS-1)
- Personnel platform (Models SLP, SLPR)
- High-performance piston motor winch (Model PMW)
- Pallet fork (Model MKF)
- Loose material clam bucket (Model LMC)
- Hydraulic tilting pole grab (Model PG)
- Rear hydraulic stabilizers with 14-foot span (Model RSOD)
- Front-mounted hydraulic stabilizer (Model SFO)
- Cross frame outriggers with 15½-foot span (Model 6HO)
- Capacity alert systems (Models AAs, HAS)
- Hydraulic oil cooler (Model HOC)
- Three pump system (Model TP3)

**Do not operate National cranes or accessories within 10 feet of live power lines or other electrified sources. Weights of all accessories attached to the boom or loadline of the crane must be deducted from the effective lifting capacity. Some accessories cannot be used in combination with other accessories and/or certain boom/lb combinations. See your National dealer for details and specific accessory availability.**

Your National Dealer:

# National Series 600B

**A high-capacity telescoping crane from National, America's truck-mounted hydraulic crane leader**

Maximum Capacity: 28,000 Pounds (12.5 Metric Tons)

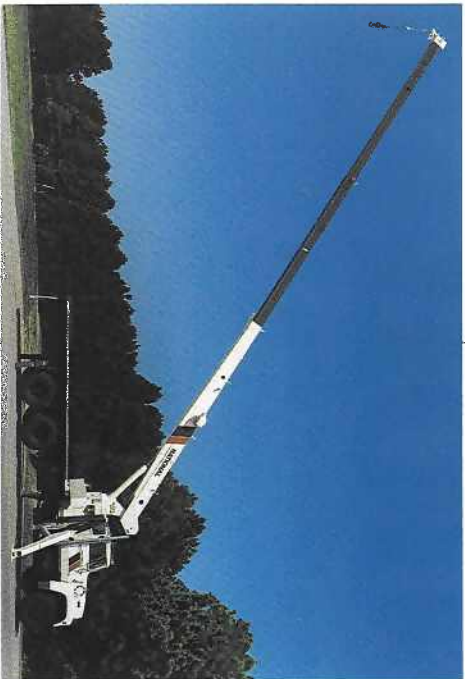
Maximum Height: 118 Feet (36 Meters)







## Why buy a National Series 600B?



National Crane, America's truck-mounted hydraulic crane leader, features the industry's premier lineup of hard-working telescoping and articulating units. The medium-to-heavy-duty **Series 600B** telescoping crane (14-ton capacity; 118-foot vertical reach) offers many advantages:

### Field-proven durability

- National has manufactured cranes since 1963.
- More than 17,000 field-proven cranes verify National's manufacturing expertise.
- Nearly 90% of all National cranes ever manufactured are working on the job today.

### Attention to quality

- National's industry leading testing program subjects all prototype models to state-of-the-art strain gauge and life-cycle testing to verify structural integrity.

- Each **600B** undergoes numerous quality inspections at all levels of manufacture and assembly. All mounted cranes are fully tested prior to shipment.

### Retained market value

- National cranes traditionally retain higher resale value year after year.

### Responsive service

- Each **600B** is backed by strong after-sale and ser-

vice support. National's professional, factory-trained dealer network spans the nation.

- Authorized National dealers maintain a parts stocking program for your **600B**.

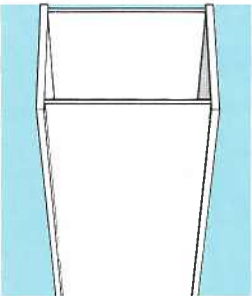
- When a dealer cannot immediately supply a part, the factory's back-up program provides 24-hour parts shipping in 90% of all breakdown rush orders.

### Strong warranty protection

- The **600B** is backed by a solid warranty covering defects in materials and workmanship for six months from date of shipment.

### Efficient boom design

- Computer-aided design enables National to improve the weight efficiency of **600B** boom sections.



- Telescoping boom sections are fabricated from four high-strength steel members welded with perpendicular corners. This "box-section" boom design has thicker top and bottom

plates to maximize strength and thinner side plates to increase capacity through lower boom weight.

- Only strong, low-alloy steel is used in boom fabrication.
- Welds are made with automatic, low-hydrogen techniques to ensure strong seams.

- Corner seams are ultrasonically tested for proper weld penetration.

- Large nylon bolt-in wear pads impregnated with lubricants provide a smooth, long-life operation and are easily replaced.

### Proportional boom extension

- Proportional (cable crowd) boom extension (each section extends and retracts proportionally during the telescoping operation) maximizes efficiency and yields higher capacities (particularly in normal working radii) through efficient boom weight distribution.

- The design permits minimum overlap to get the most reach with minimum retracted length for maneuverability.

- The utilization of cable, rather than chain, means longer service life and less maintenance.

- The boom extend cylinder is fully protected with a direct mount holding valve.

- There are no fitting tubes or hoses inside the boom, and since the system utilizes only one extend cylinder, hydraulic maintenance is minimized.

### Planetary winch

- The standard high performance planetary gear drive winch increases efficiency, requires less horsepower, and generates less heat.
- Equipped with a special gerotor motor for extra-smooth full-load operation.
- Anti-friction bearings are used throughout to maximize efficiency and seal life.

- A "Burst-of-Speed" option, increasing line speed up to 60% over normal, allows extra fast payout and pickup of unloaded cable.

- Standard brake and counterbalance valves provide fine control.

- A rotation indicator allows the operator to readily determine that the drum is rotating.

- The winch cover permits visibility of the drum and cable.

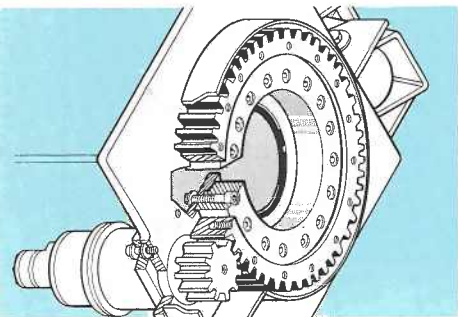
- Rotation-resistant 9/16" diameter cable is standard.

### Positive planetary turret rotation

- The planetary rotation gearbox with a hydraulic release brake allows the gearbox to backdrive when excessive side load is applied to the boom, reducing shock loads on the upper and lower crane structure and gearbox.

- The turret drive is designed with extra-heavy bearings below the drive pinion. The turntable bearing full-circle bolt pattern extends the bearing life due to uniform loads on the bearing.

- The gearbox and rotation bearing mounting surfaces are precision-machined after welding to ensure consistent tooth alignment for smooth rotation and low wear, even under maximum loads.



## National Series 600B



**66-foot boom available!**

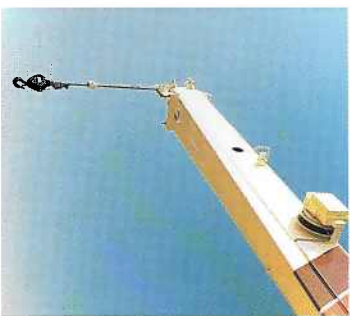




- The entire turret glides smoothly on a low-inertia ball bearing race.
- Rotation is 370° non-continuous. The rotation stop design eliminates the sudden stop on non-continuous rotation machines by gradually slowing the rotation of the boom.
- A turret rotation indicator aids the operator in positioning loads.
- **Solid, reliable stability**
- Wide 18-foot-span A-frame out-and-down outriggers provide stable, efficient leveling, even on uneven ground. Large 13" x 16" outrigger pads are standard.



- controlled by two cylinders acting independently.
- A precision-mounted level indicator at each control station aids the operator in leveling the 600B during the set-up procedure.
- **Protection features**
- A standard anti-two-block sensory device helps prevent cable damage caused by two-blocking (i.e., when the winch cable or attachments contact the underside of the boom sheave case, either by winching up or extending the boom without paying out the winch cable).



- is exceptionally strong, yet a simple method of mounting the crane.
- A subbase is available to eliminate truck reinforcing and, in some cases, counterweight.
- **Easy service, low downtime**
- Boom access holes enhance serviceability and allow viewing of the extension system.
- The 600B frame allows easy access to control valves and plumbing for minor adjustments and fitting tightening. Oil and control valves are located externally for improved serviceability.
- The complete console is easily removable for major repair.
- The simplicity of the boom design permits fast disassembly.
- **Dual operator stations**
- Standard dual operator stations feature identical controls in a SAE orientation of functions (you always work the same control with the same hand).
- Extra-fine metering and low spool forces allow smooth, precise control.
- Control rods supported by nylon bearings permit smooth, low-maintenance operation.
- The 600B can be mounted on selected, single-axle trucks (Model 666B requires a tandem-axle truck).
- National's unique "tab-and-slot" shear plate mounting

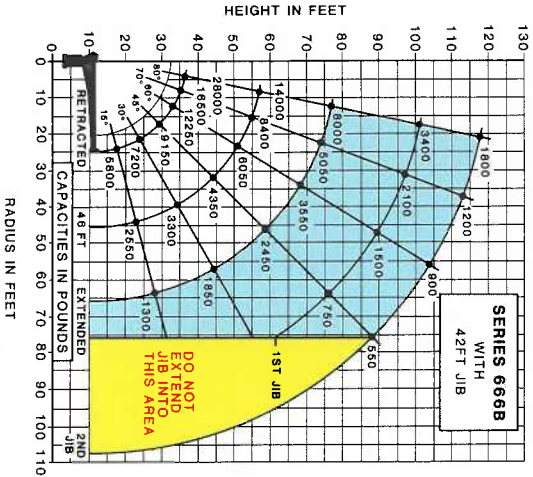


- Labeled control knobs identify the function of each control.
- A system pressure gauge enables the operator to monitor pressures on all control functions.
- Each station is equipped with foot throttles controlling the engine speed.
- Kill and audible warning switches are located at each station.
- The operator's stations are positioned to allow easy reading of the angle indicator showing the boom angle during crane operation.
- **Compact design**
- The 600B fits into just 46½" of bed space, leaving ample space for payload.
- The operator platforms are designed with open-mesh expanded metal to minimize dirt and mud buildup.
- **Heavy-duty hydraulic system**
- A standard high-pressure, high-speed balanced variable replacement tandem pump provides for a smooth, fast, simultaneous operation. The winch is isolated from other crane functions, providing an independent operation capability.
- Control valve spools are hard, chrome-plated for long life and resistance to corrosion. All spools are selected home-fitted for minimum internal leakage and maximum load-holding ability.
- The aluminumized hydraulic reservoir prevents the gathering of rust in the system, keeping the hydraulic oil clean.
- **Versatile accessories**
- A selection of boom/jib combinations (see the following chart) allows you to tailor your 600B to your job requirements.
- A comprehensive accessory line (see backside of this brochure) adds to the versatility of your 600B.

## National Series 600B Booms and Jibs

### Boom and Jib Combinations

638B: 15'-8" to 38' three section	
638B: 15'-8" to 38' three section	6FJ16: 15' straight
638B: 15'-8" to 38' three section	6FJ23M: 15' to 23' manual pull-out
647B: 18'-8" to 47' three section	
647B: 18'-8" to 47' three section	6FJ18: 18' straight
647B: 18'-8" to 47' three section	6FJ29M: 18' to 29' manual pull-out
656B: 21'-8" to 56' three section	
656B: 21'-8" to 56' three section	6FJ21: 21' straight
656B: 21'-8" to 56' three section	6FJ35M: 21' to 35' manual pull-out
666B: 25' to 66' three section	
666B: 25' to 66' three section	6FJ25: 25' straight
666B: 25' to 66' three section	6FJ42M: 25' to 42' manual pull-out



666B Capacity* (Metric equivalents shown in parentheses)			
Radius	All Booms Retracted	Extended 46 Feet	All Booms Extended Maximum
Maximum Capacity	28,000 lbs. (12,700 kg.)		
9' (2.7m)	12,700 lbs. (5,800 kg.)		
12' (3.7m)	13,800 lbs. (6,270 kg.)	11,900 lbs. (5,390 kg.)	
16' (4.9m)	10,700 lbs. (4,850 kg.)	9,250 lbs. (4,196 kg.)	8,650 lbs. (3,951 kg.)
20' (6.1m)	8,550 lbs. (3,890 kg.)	7,600 lbs. (3,447 kg.)	6,900 lbs. (3,134 kg.)
24' (7.3m)	6,300 lbs. (2,860 kg.)	5,300 lbs. (2,405 kg.)	5,500 lbs. (2,495 kg.)
28' (8.5m)		5,500 lbs. (2,495 kg.)	4,800 lbs. (2,177 kg.)
32' (9.8m)		4,800 lbs. (2,177 kg.)	4,150 lbs. (1,905 kg.)
37' (11.0m)		3,700 lbs. (1,678 kg.)	3,350 lbs. (1,520 kg.)
40' (12.2m)		3,350 lbs. (1,520 kg.)	3,000 lbs. (1,361 kg.)
44' (13.4m)		2,800 lbs. (1,270 kg.)	
48' (14.6m)		2,400 lbs. (1,089 kg.)	
52' (15.9m)		2,150 lbs. (975 kg.)	
56' (17.1m)		1,850 lbs. (843 kg.)	
60' (18.3m)		1,500 lbs. (680 kg.)	
64' (19.5m)			

\*Capacities shown are for the 666B with the load suspended, radius shown includes increase due to boom deflection. Capacities vary for load rating information.

**Do not operate cranes or accessories within 10 feet of live power lines.**

1. Load ratings shown on these charts are maximum allowable loads with the outriggers properly extended on a firm, level surface and the crane leveled.
2. Always level the crane with the level indicator on the crane frame.
3. The operator must reduce loads to allow for such factors as wind, ground conditions, operating speeds and the effect of freely suspended loads.
4. Overloading the crane may cause structural collapse or instability.
5. Weights of any accessories attached to the boom or loadline must be deducted from the load chart capacities.
6. Do not exceed jib capacities at reduced boom length.

