

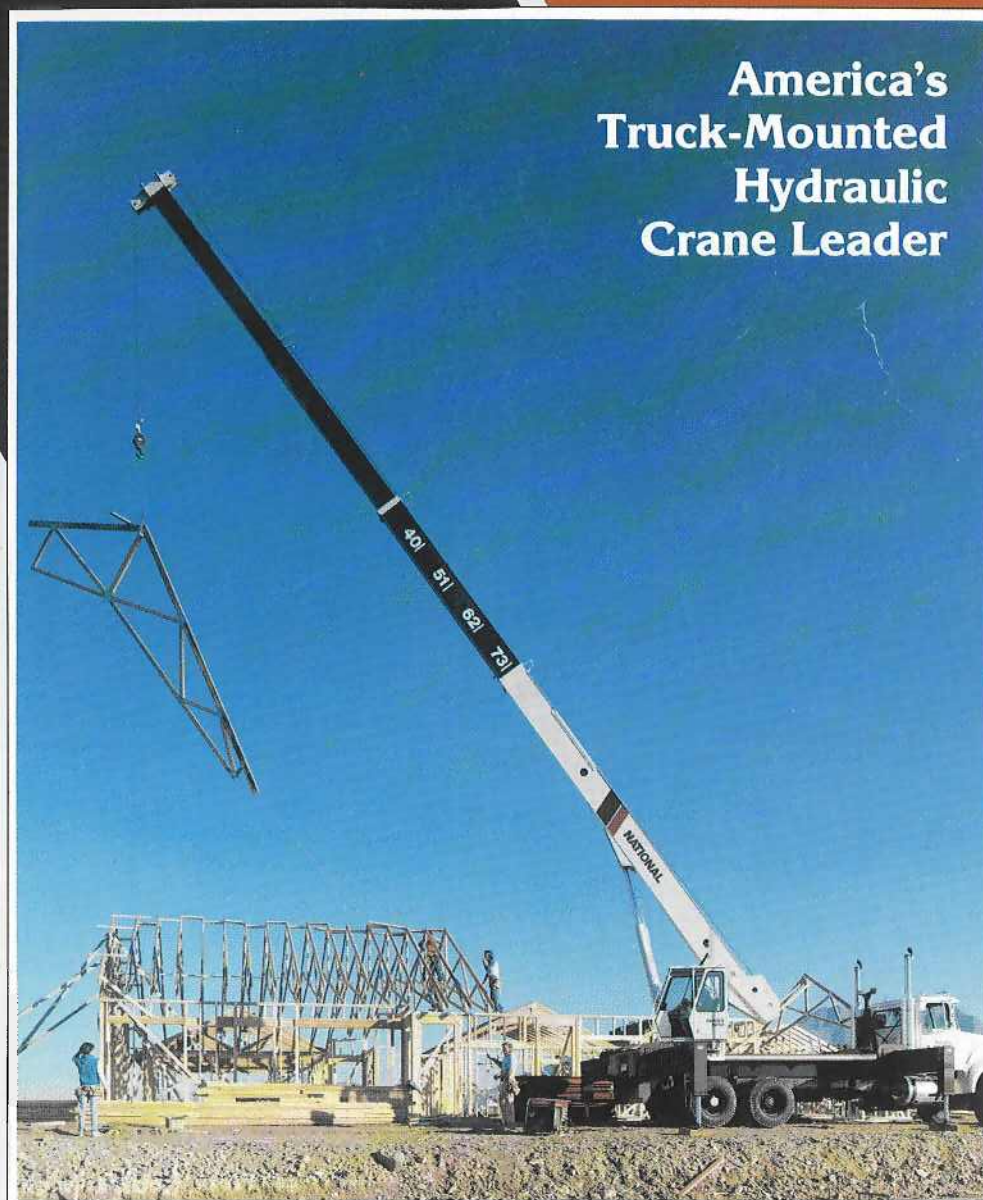


# NATIONAL SERIES 1200

**Truck-Mounted Telescoping Crane and Accessories**

**Maximum Vertical Reach: 150 Feet (46.7 Meters)**

**Maximum Capacity at 10-Foot Radius: 35,000 Pounds (15.9 Metric Tons)**



**America's  
Truck-Mounted  
Hydraulic  
Crane Leader**





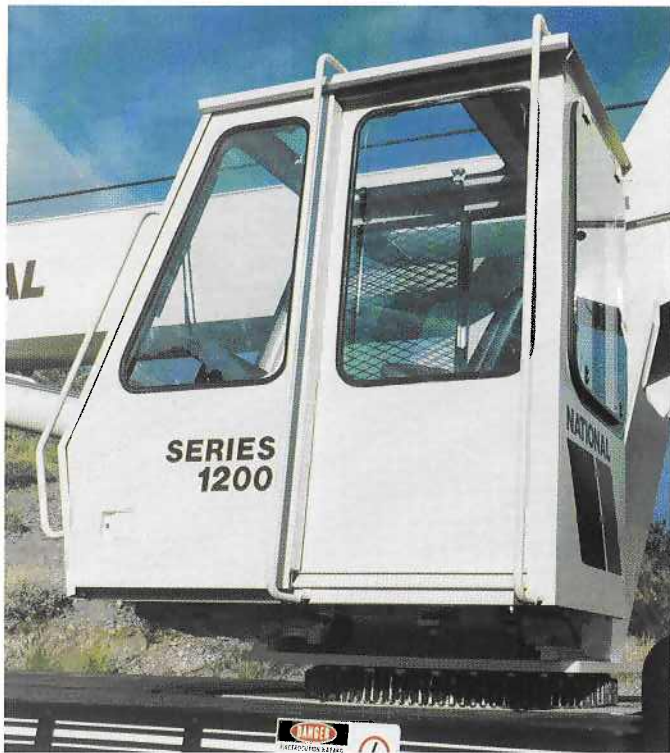
## Longest reach in the Truck-Mounted Hydraulic Crane Industry!



National's anti two block system is standard on all National cranes (as of June 1, 1986). Photos in this brochure taken prior to that date may not show the crane equipped with the current standard anti two block protection system.







### Operator's Cabin

A deluxe, spacious, well-ventilated operator's cabin that rotates with horizontal boom movement is standard on the Series 1200. The cabin design provides for constant forward vision of the boom hook and load. It features safety-glass windows on all four sides of the cab and an impact-resistant, durable Lexan window above the cab for excellent upward visibility.



The Lexan top lifts up for ventilation. Other features include a sliding door, front windshield wiper, dome light, circulation fan, optional heater and defroster system, and a cushioned adjustable seat that can be easily positioned for comfort.

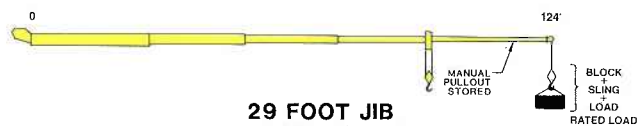
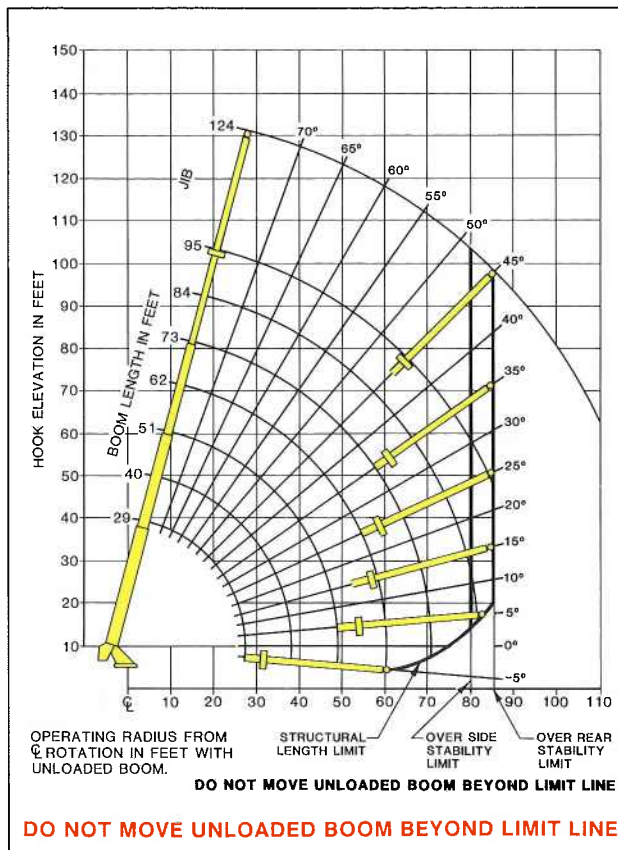
The cabin houses the control console, the horn, start/stop switches, a pressure gauge monitoring all functions, and foot and hand control throttles.







875536

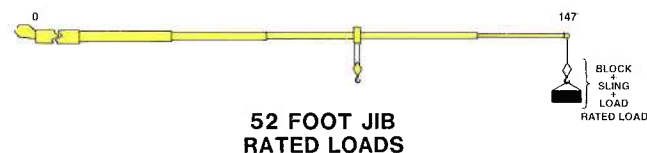
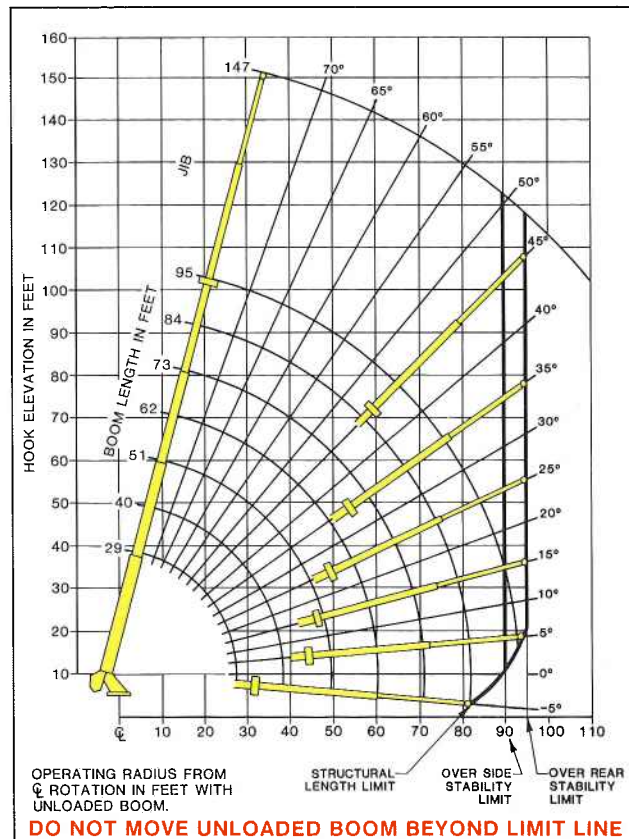


LOAD RADIUS (FEET)	LOADED BOOM ANGLE (DEGREES)	OVER SIDE (lb)	OVER REAR (lb)
36	74°	5200	5200
44	70°	4200	4200
54	65°	3250	3550
64	60°	1950	2300
72	55°	1200	1550
80	50°		1000

**SHADED AREAS ARE STABILITY LIMITED CAPACITIES**

Capacities shown are with 400-pound block rigged on main boom. If 200-pound block is rigged on main boom, add 150 pounds to capacities shown. If no block is rigged on main boom, add 300 pounds to capacities shown.

875537



LOAD RADIUS (FEET)	LOADED BOOM ANGLE (DEGREES)	OVER SIDE (lb)	OVER REAR (lb)
44	74°	2800	2800
54	70°	2400	2400
66	65°	2000	2000
78	60°	1400	1600
88	55°	800	1100

**SHADED AREAS ARE STABILITY LIMITED CAPACITIES**

Capacities shown are with 400-pound block rigged on main boom. If 200-pound block is rigged on main boom, add 100 pounds to capacities shown. If no block is rigged on main boom, add 200 pounds to capacities shown.

**Set-up:**

1. Fully extend outriggers and level crane.
2. Rig jib as shown in the operator's manual.

**Operation:**

1. Operate with jib by radius, when main boom is fully extended. If necessary, increase boom angle to maintain loaded radius.
2. Operate with jib by boom angle when main boom is not fully extended. Do not exceed rated jib capacities at any reduced boom lengths.

3. Do not extend unloaded boom beyond stability limit radii shown on range diagram, as loss of stability may occur rapidly and without warning. A 400-pound main block and 150-pound downhaul weight have been considered.
4. All jib loads must be lifted with single part reeving.







## National Series 1200 Truck Specifications



The complete Series 1200 unit must be installed on the truck in accordance with factory requirements and a test performed to determine actual stability and counterweight requirements since individual truck chassis vary.

Gross Axle Weight Rating (GAWR),

Front . . . . . 18,000 pounds

Gross Axle Weight Rating (GAWR),

Rear . . . . . 34,000 pounds

Wheelbase (WB) . . . . . 234 inches

(free of obstructions,

full width in crane

mounting area)

(CA/CT) . . . . . 156 inches

Frame Section Modulus (SM)

front axle to rear axle

50,000 PSI . . . . . 25 inch<sup>3</sup>

or

100,000 PSI . . . . . 15 inch<sup>3</sup>

Estimated bare chassis

weight required for stability

prior to installation of crane

or accessories

Front . . . . . 8,000 pounds

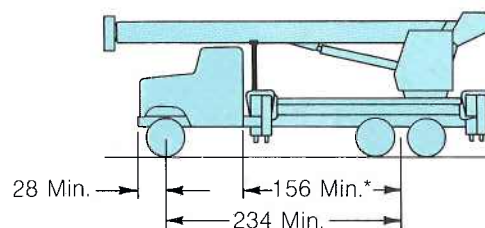
Rear . . . . . 7,500 pounds

Estimated Final Average

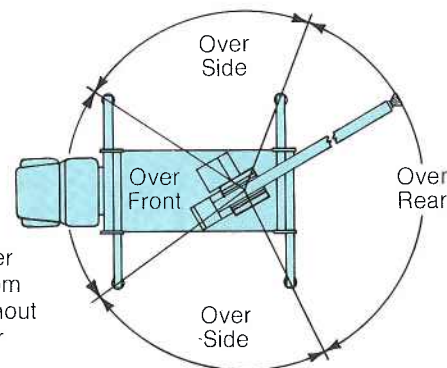
Weight . . . . . 45,000 pounds

### NOTES:

- (1) Maximum front and rear axle weights vary from state to state. Contact factory for details.
- (2) GAWR means Gross Axle Weight Rating and is dependent on all components of the vehicle such as axles, tires, springs, frame, etc., meeting manufacturer's recommendation. **Always specify GAWR when purchasing trucks.**
- (3) Minimum axle requirements may increase if more payload carrying capabilities are required and local regulations allow.
- (4) Diesel engines require variable speed governor and energize-to-run fuel solenoid for smooth crane operation.



\*Clear of obstructions (mufflers, exhaust stacks, etc.) on top of truck frame for full 8-foot width.



Do not lift over front with boom extended without front stabilizer option.





## National Warranty, Parts and Service

### The National Warranty

No product is better than its warranty. And no warranty is better than the company behind it.

We didn't get to be America's leading manufacturer of truck-mounted telescoping and articulating cranes by building less than the best. Or backing our products with less than a comprehensive warranty.

Our warranty covers your crane against defects in materials or workmanship for **six full months** from the date of shipment, subject to the conditions of the warranty.

When you select a National crane, you're getting more than just a crane. You're getting a nationwide dealer warranty service network, strong warranty protection and our special concern for every product we make.

Read our warranty. Then, don't settle for less. For complete information, write National Warranty Service, Waverly, NE 68462.

### The National Parts System

Authorized National Crane dealers maintain a parts supply to support the National cranes in each dealer's area. If a dealer cannot immediately supply a needed part, the factory can normally provide the part to the dealer within 48 hours on request. National's responsiveness to dealer requests means that your crane will be back on the job fast. National maintains a highly trained Service and Parts staff to answer dealer service questions and expedite parts shipping.

### The National Service Center

Just west of Lincoln, Nebraska, we maintain a well-equipped service center. Here, we do all our factory crane mounting.

The central location of our Lincoln Service Center makes it easy to return cranes for special modifications or extreme repairs. Most National dealers can perform all but the most unusual modifications or most serious repairs.

Should you need to return your crane to us for modification, warranty repair or other service, we will give it priority care and see it's returned as soon as possible.

