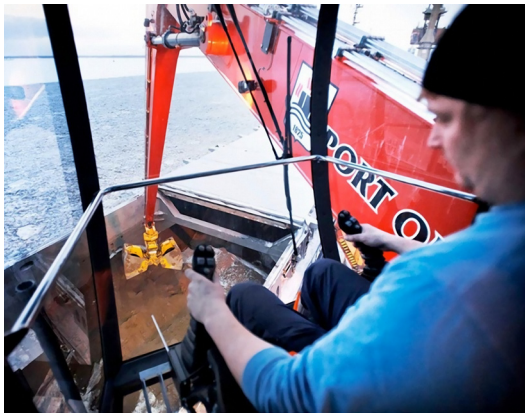




MANTSINEN 95 R and 95 ER



More load, less energy



MANTSINEN 95 R and 95 ER

STICK FOOT & TIP

Stick foot and tip are made of high-tensile cast steel. The extensive use of cast structures in the front equipment is the backbone of its durability.

MAIN BOOM FOOT

Main boom foot is made of cast steel. This provides an extended service life to one of the most stressed structural components of the machine. The double steel plates of the upperstructure frame run all the way from front equipment pivot points to the counterweight making the frame extremely rigid.

STICK BOX

The box of the stick is made of two C-profiles using fine-grain steel. The design allows the stick to be designed with no welding seams in high stress areas, making it extremely light and durable. Hydraulic lines are well protected on sides of the stick.

CAB ELEVATOR

Mantsinen cab elevator brings the operator high up or far from the swing centre, on top of the hold, depending on the working environment. The large stainless steel operator cab has large windows for an excellent visibility. The floor window is in a 15° angle. The cab is also equipped with an instructor seat.

SWING MECHANISM

The Mantsinen 95 swing mechanism consists of two swing motors and a heavy-duty three-row roller type slewing ring. The internal teeth run in grease bath. The swing mechanism has a separate closed loop circuit pump. This makes the swing extremely smooth and controllable and saves a considerable amount of energy.

More load, less energy



lift your efficiency to the next level with hydraulic precision

ENGINE

The longitudinally mounted engine is accessible from both sides. The sound insulated compartment keeps engine noise at a minimum. Hydraulic pumps are insulated from the engine by a firewall.

RADIATOR

Side by side mounted radiator and hydraulic oil cooler provide easy access and cleaning. Fan reversing function helps to keep the coolers clean also in dusty environments.

SERVICE WALKWAYS

The wide inside and outside service walkways provide an unprecedented access to all service points.

UNDERCARRIAGE

The gantry type undercarriage allows trucks or wagons to pass through. It is available in different heights. One or two additional fuel tanks are available as an option.

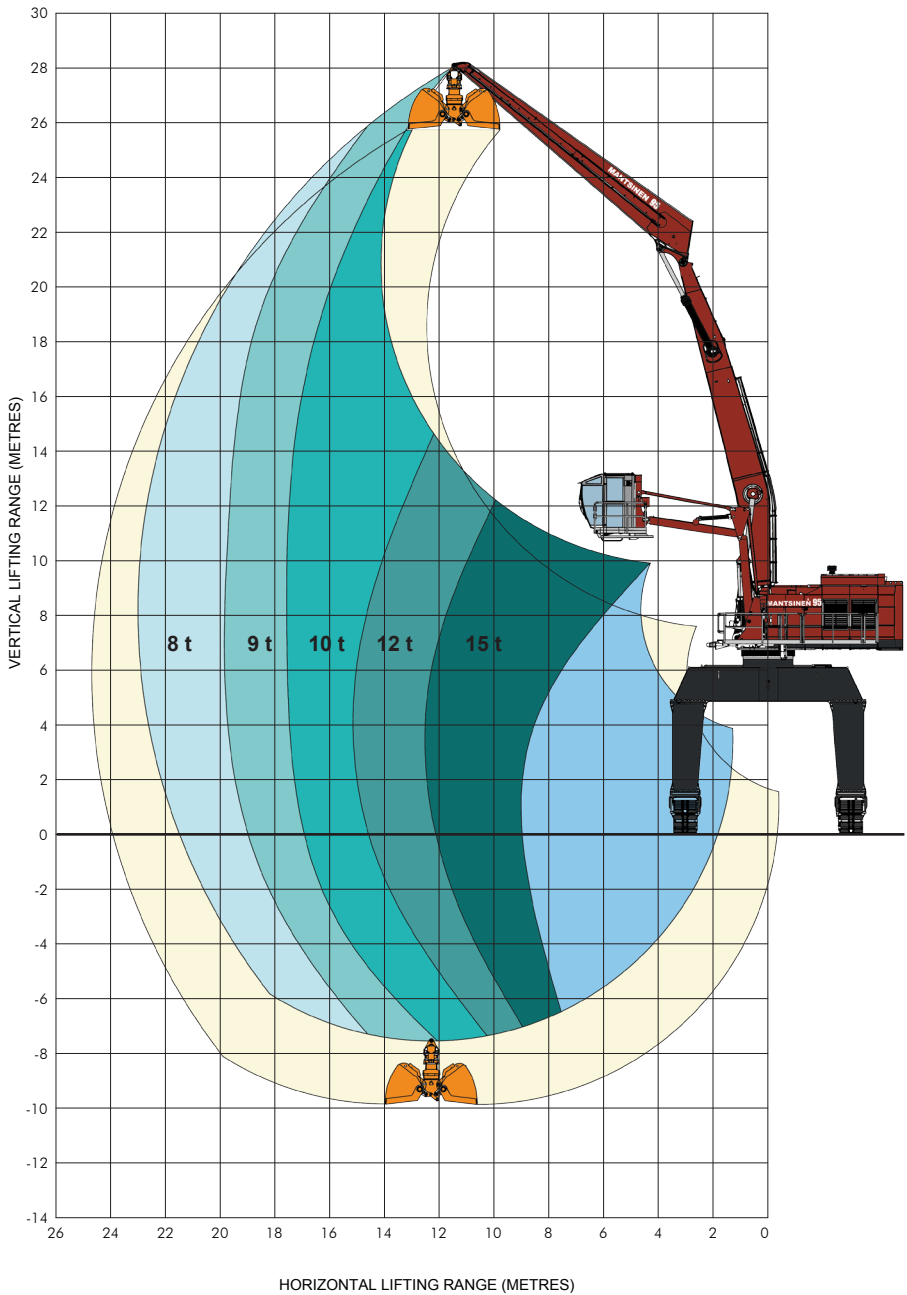
TRACKS

The tracks are long and wide apart. The machine has an excellent stability and rated loads can always be swung 360° on firm and even ground.

TRACK SHOES

The Mantsinen designed flat cast steel track shoes run smoothly on gravel, asphalt and concrete surfaces.

Lifting capacity ranges





MANTSINEN 95 R and 95 ER - Technical specifications

Front equipment	
Max. horizontal reach	25,5 m
Lifting capacity (approx.)	8,5 t / 20 m
Lifting capacity Heavy Lift (approx.)	9,5 t / 20 m
Engine 95 R	
Type	Caterpillar C-13 ACERT
Power	328 kW / 1 800 r/min
Number of cylinders	6
Displacement	12,5 l
Electric motor 95 ER	
Power	250 kW / 1 500 r/min
Voltage	400 to 690 V
Hydraulic system	
Oil flow, equipment and drive	2 x 415 l/min
Oil flow, swing	385 l/min, closed loop circuit
Working pressures	Equipment 330 bar, Swing 300 bar, Drive 330 bar
Max. swing speed	4,8 r/min
Undercarriage	
Heights	2,5 m / 4 m / 6,5 m* / 7 m*
Load carrying track length	6 820 mm
Track shoes	850 mm flat
Drive speed	0 - 2,2 km/h and 0 - 3,5 km/h
Cab elevator N2-5000	
Horizontal movement	Max. 8,5 m from swing centre
Vertical movement	Operator eye level max. 12,5 m (undercarriage height 6,5 m)
Weight without attachments	
Depending on configuration	93 - 115 t
Refill capacities	
Hydraulic oil reservoir	1 000 l
Fuel tank 95 R	1 500 l
Additional fuel tank 95 R (option)	2 000 l

* 6,5 m and 7 m undercarriages allow trucks and railroad wagons to pass through
Illustrated machines can have optional equipment. Specifications subject to change without prior notice.

Mantsinen Group Ltd Oy
Väläkankaantie 3,
FI-80400 Ylämylly
FINLAND

Tel. +358 20 755 1230
Fax +358 13 252 5555
www.mantsinen.com

Your dealer:

More load, less energy