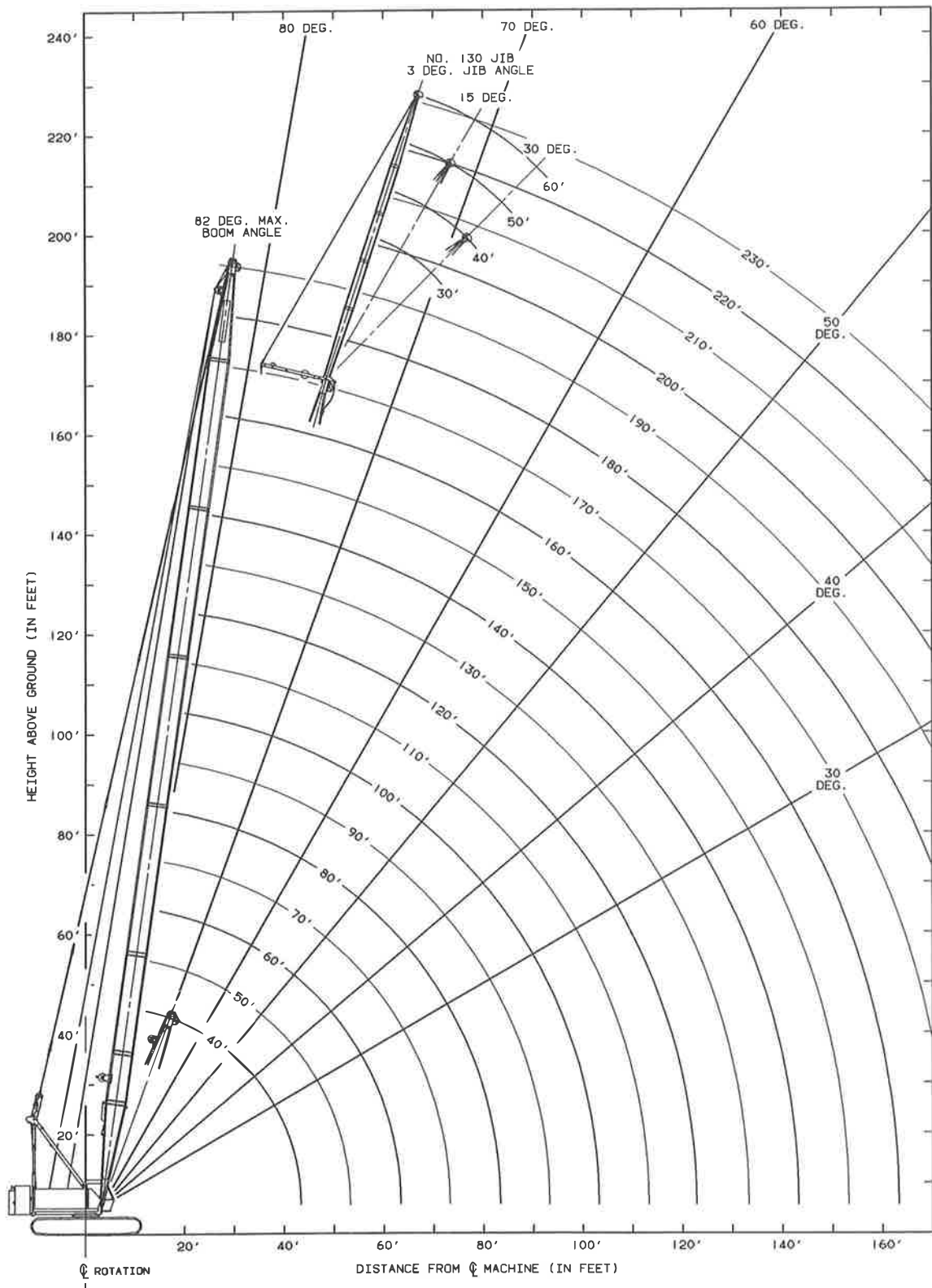
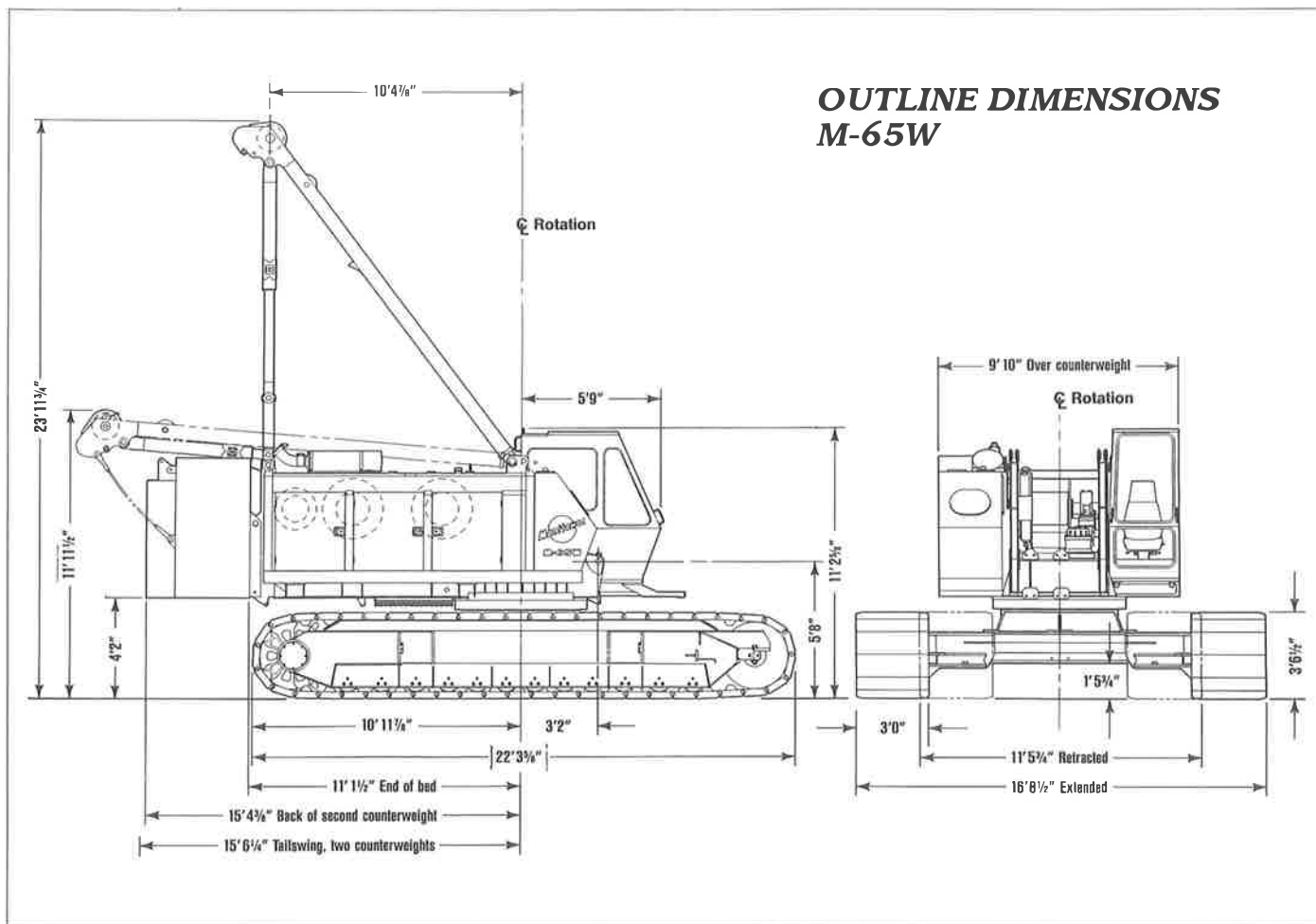




# MANITOWOC M-65W



**75-Ton Liftcrane ■ 15,000-Lb. Clamshell ■ 13,500-Lb. Dragline**



## SPECIFICATIONS

### BASIC MACHINE

#### Upperworks

**ROTATING BED:** Fabricated steel rotating bed is mounted on 64 3/4" diameter turntable bearing.

**DRUMS:** Basic machine is equipped with two full-width drums. Drums are 18" wide and 16 1/2" diameter. Each drum is antifriction mounted on a separate shaft and is driven independently by a fixed-displacement hydraulic motor through a reduction gear. Internal-expanding drum clutches are spring set, air released. External-contracting drum brakes are air applied, spring released. Parking brakes are spring set, air released.

**BOOM HOIST:** Rear-mounted independent two-drum boom hoist is powered by a fixed-displacement hydraulic motor coupled to a planetary reduction, and is equipped with ratchet and pawl.

**SWING SYSTEM:** Front-mounted independent swing is powered by a fixed-displacement hydraulic motor coupled to an internal brake and planetary reduction. Includes gear-segment type swing lock.

**OPERATOR'S STATION:** Fully enclosed and insulated steel module mounted to the left front corner of rotating bed. Module is equipped with sliding door, large safety glass windows on all sides and roof. Electric signal horn, cab space heater, upper front windshield wiper, dome light, and air circulating fan are standard equipment.

#### Lowerworks

**CARBODY:** Single-piece steel fabricated carbody incorporates wide wings that facilitate removal from pockets in crawler frames. Crawlers hydraulically extend to 16' 8 1/2" and hydraulically retract to 11' 5 3/4".

**CRAWLERS:** Crawler assemblies are 22' 3 3/4" long reinforced steel fabrications with 36" closed treads and sealed "low-maintenance" rollers. Each crawler is powered independently by a variable-displacement hydraulic motor driving through a planetary reduction. Crawlers provide counter-rotation capability.

**ENGINE/TRANSMISSION:** Cummins 6 CT 8.3 diesel engine rated at 210 HP at 2200 RPM provides independent power for all machine operations through the multi-hydraulic-pump transmission. Power system also includes engine block heater (120V), high silencing muffler, hydraulic oil cooler, radiator, and fan.

**CONTROLS:** Modulating electric-over-hydraulic controls provide infinite function speed response directly proportional to control movement. Selector switch permits hoisting drums to be operated in power-down (liftcrane), free-fall (excavator), or clamshell mode.

**PERFORMANCE DATA**

<b>Wire Rope Specifications</b>					
<b>Application</b>	<b>Dia.</b>	<b>Description</b>	<b>Breaking Strength</b>	<b>Weight</b>	<b>Max. Operating Length</b>
Lift	¾"	6 x 25 EIPS Regular Lay	58,800 Lbs.	1.04 Lbs./Ft.	714' Hoist 714' Whip 252' Auxiliary*
Clam	¾"	6 x 25 EIPS Regular Lay	58,800 Lbs.	1.04 Lbs./Ft.	230' Closing 180' Holding
Drag	¾"	6 x 25 EIPS Lang Lay	58,800 Lbs.	1.04 Lbs./Ft.	190' Hoist 100' Drag
Boom Hoist	9/16"	6 x 26 EIPS Alternate Lay	33,600 Lbs.	0.61 Lbs./Ft.	570'

\*Optional drum mounted on rear drum shaft for 3-drum applications. 15,000-lb. line pull.

<b>Line Pull Vs. Line Speed* — Line Pull Infinitely Variable From 0 to 15,000 Lbs.</b>			
<b>Line Pull</b>	<b>Line Speed</b>	<b>Divert 1 Travel Pump</b>	<b>Divert 2 Travel Pumps</b>
0 Lbs.	245 FPM	382 FPM	520 FPM
5,000 Lbs.	242 FPM	376 FPM	510 FPM
10,000 Lbs.	238 FPM	370 FPM	396 FPM
15,000 Lbs.	234 FPM	264 FPM	264 FPM

\*Chart data based on 16½" diameter smooth drum, 5th layer.

**SWING SPEED:** 3.5 RPM.

**TRAVEL SPEED:** 1.0 MPH.

**GRADEABILITY:** 30%.

**BOOM HOIST SPEED:** 190' boom, 0° to 82° — 1 minute, 27 seconds.

**LIFTCRANE ATTACHMENT**

**BASIC BOOM:** The liftcrane is equipped with 40' No. 46 basic boom consisting of 21' butt and 19' top with five 20" diameter antifriction-bearing-mounted steel sheaves. Includes rope guides, boom hoist wire rope, boom angle indicator, and hook and weight ball.

Gantry with telescopic backhitch and power operated backhitch pins.

Telescopic air-cushioned boom stop.

Automatic boom stop.

**COUNTERWEIGHT:** Two-piece removable counterweight, total 42,000 lbs., with power-operated pins and with counterweight-handling pendants.

**OPTIONAL EQUIPMENT****BOOM AND JIB:**

10' No. 46 Boom insert with pendants  
20' No. 46 Boom insert with pendants  
30' No. 46 Boom insert with pendants  
30' No. 130 Jib with mounting parts  
10' Jib insert with pendants

**ATTACHMENTS:**

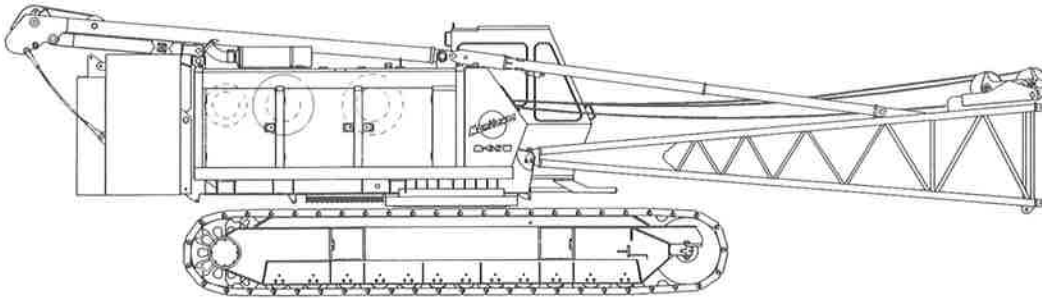
Manitowoc 75-ton five-sheave load block  
Single-sheave upper boom point (whipline)  
Pendant links for load-moment sensor pin  
Dragline fairlead  
Tagline, Rud-O-Matic No. 1248, two barrel  
Liftcrane lagging, 18" diameter, grooved for  
¾" diameter rope — front/rear  
Clamshell/dragline lagging, 18" diameter, grooved  
for ¾" diameter rope — front/rear  
Lift/clam/drag wire rope, ¾" diameter, 6x25 EIPS  
Machine preparation for X-SPANDER®  
X-SPANDER attachment  
Other attachments on request

**BASIC MACHINE OPTIONS:**

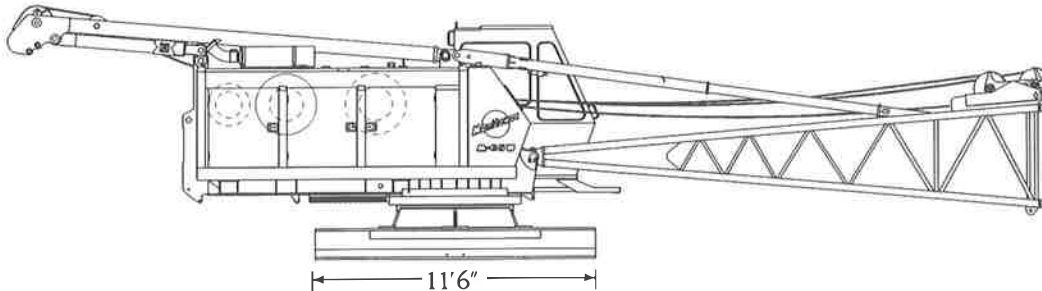
Split drum shaft assembly in place of  
single drum shaft  
Drum rotation indicators (2)  
Windshield wiper, lower front window  
Windshield wiper, roof window  
Ether starting aid  
Alcohol injector in air line  
Fire extinguisher  
Air conditioner in operator's cab  
Hydraulic third drum on front of rotating bed,  
9,700 lb. line pull  
Special paint — machinery enamel in color other than  
Manitowoc standard  
Block up limit control for load or auxiliary line  
Bail limit control for hoist drums

**SHIPPING DATA** — All dimensions Length x Width x Height

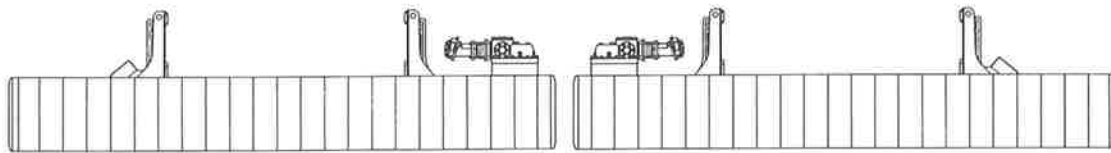
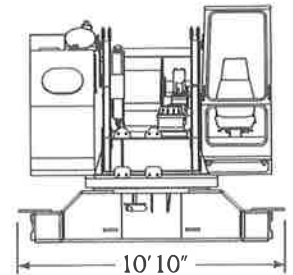
M-65W



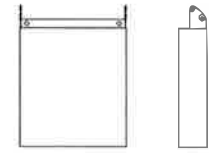
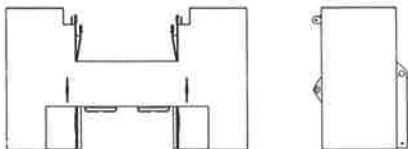
Complete liftcrane less boom top: 131,585 Lbs. 42'9" x 11'6" x 12'0"



Basic machine with boom butt &amp; gantry: 49,700 Lbs. 42'9" x 10'10" x 10'6"



Crawler frames: Each 19,750 Lbs. 22'4" x 5'9" x 3'7"

Outer counterweight: 7,000 Lbs.  
6'0" x 4'0" x 1'2"Inner counterweight: 35,000 Lbs.  
9'10" x 3'10" x 5'10"

Boom top: 2,000 Lbs. 24'3" x 4'4" x 4'9"

Unit	Weight (Lbs.)	Dimensions (L x W x H)
10' Boom insert	570	10'6" x 4'4" x 4'7"
20' Boom insert	970	20'6" x 4'4" x 4'7"
30' Boom insert	1,375	30'6" x 4'4" x 4'7"
30' Basic jib	1,540	Pack inside 30' boom insert
10' Jib insert	190	Pack inside 30' boom insert
75-Ton hook block with steel sheaves	1,370	5'1" x 2'1" x 2'1"
Pendant box	1,320	5'0" x 4'9" x 1'10"
Miscellaneous box, including weight ball	2,260	7'2" x 2'9" x 2'3"

**Manitowoc M-Series**  
...the new generation of  
liftcrane performance!

**MANITOWOC ENGINEERING CO.**

Division of The Manitowoc Company, Inc.

500 South 16th St. ■ Manitowoc, WI 54221-0070

Telephone: 414-684-6621 ■ Telefax: 414-683-6277