



# MANISCOPIC

**MT 1030**  
S & ST



- Capacity: 3000 kg
- Lift height: 9.98 m
- Compact stabilizers
- Load Place System (LPS)
- Torque convertor transmission

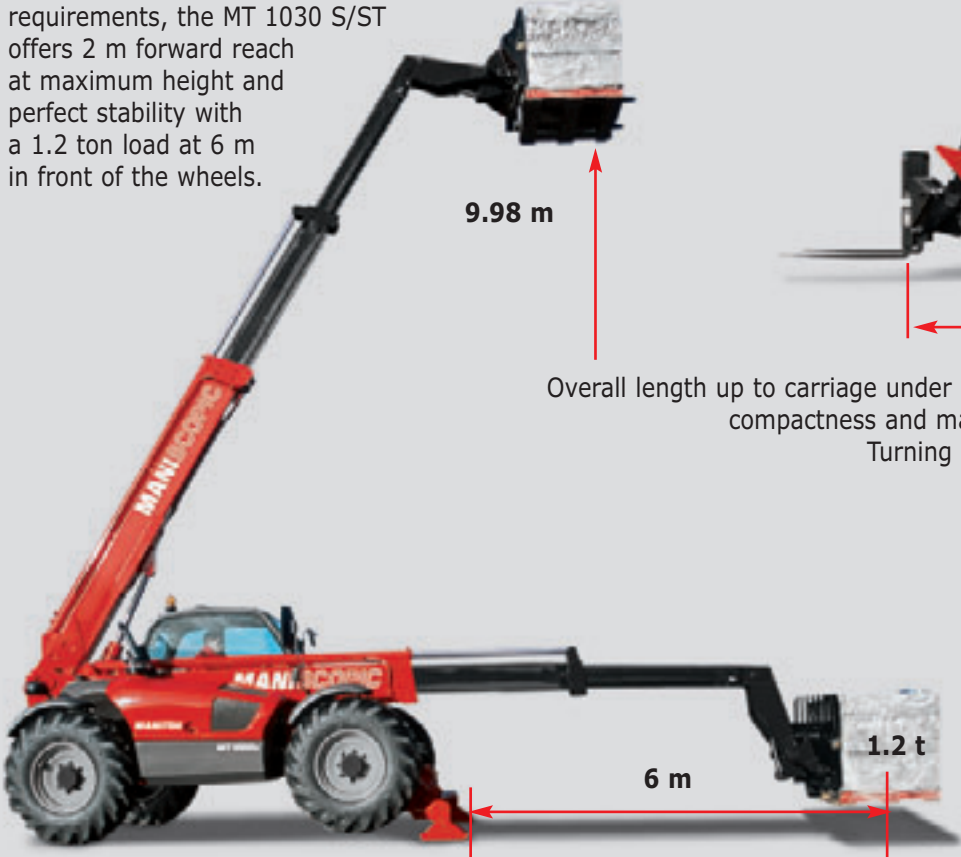


# MANITOU



## Exceptional lifting performances...

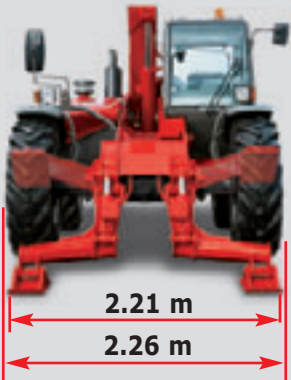
To match daily handling requirements, the MT 1030 S/ST offers 2 m forward reach at maximum height and perfect stability with a 1.2 ton load at 6 m in front of the wheels.



## ...without compromising compactness



Overall length up to carriage under **5 m** and short rear overhang offer all the compactness and manoeuvrability required in confined sites.  
Turning radius of **3.75 m** for easy manoeuvring.



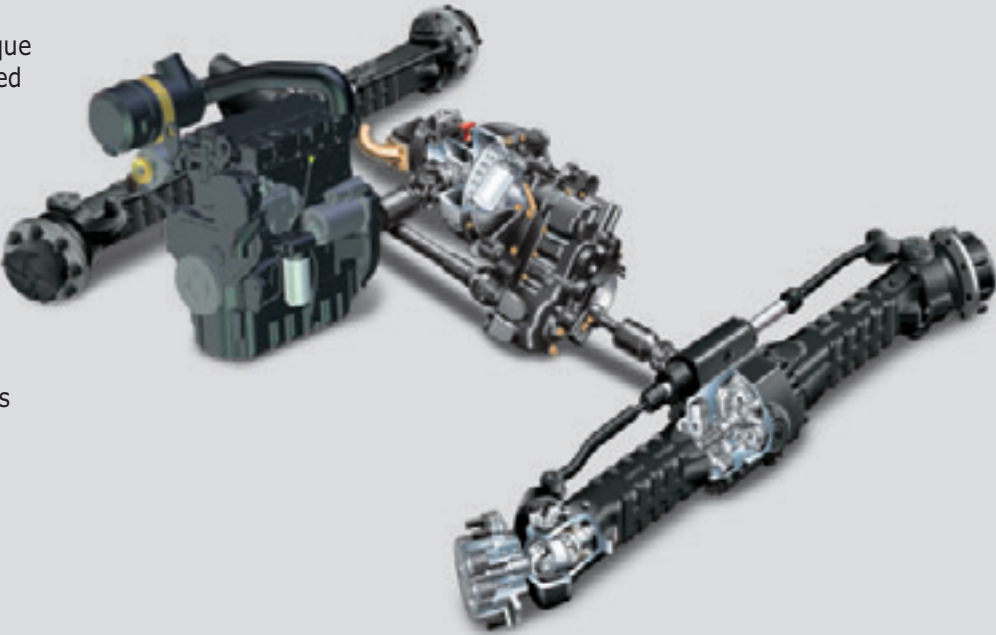
Proportional and independant stabilizers lowering on a 2.21 m width.  
Ideal in restricted spaces with minimum damage to the surface.

## All the power required for loading

**95 or 101 HP** Perkins Engine and torque converter transmission driving a 4 speed gear box, perfectly suited for travelling on the road.

**8200 daN** (S) or **8300 daN** (ST) drawbar pull enabling fast achievement of any loading task.

Hydraulic Pump operating at **250 bars** and supplying a **105 l/mn** flow.  
Simultaneous use of hydraulic functions and **5350 daN** tear out force.





## Efficient on site

### Load Place System (LPS)

Two proportional and simultaneous hydraulic functions in one hand.



**PLACING:**  
Lift/Lower + Tel Out/Tel In



**LOADING:**  
Lift/Lower + Crowd/Dump



Dual lever system fitted directly on valve bank. Transmission cut off switch allocating all the engine power to hydraulic performances.

In addition, the forward/reverse selector is now integrated into the **LPS**, allowing the operator to keep the left hand on the steering wheel for greater safety.



## Total safety

As well as exceptional performances, the MT 1030 S/ST operates in total safety whatever the environment or the task to undertake.



**Brakes**  
on both axles



**Progressive**  
**Safe Load Indicator**

\* Option :  
Automatic cut off  
of endangering  
movements





## MT 1030 S/ST



**Lifting capacity** .....3000 kg  
at 500 mm from forks heels.  
Tipping load at maximum reach .....1160 kg  
Tear at force with toothed  
digging bucket (Iso 8313 - 1986) .....5330 daN



**Lifting height** .....9.98 m  
**Times:** Unladen/loaded (in s)  
Lifting .....6.7/9  
Lowering .....5.2/5.4  
Simultaneous extension 1<sup>st</sup> and 2<sup>nd</sup> booms ...13.8/14.2  
Simultaneous retraction 1<sup>st</sup> and 2<sup>nd</sup> booms .....8.6/7.3  
Time unladen (in s)  
Crowding .....3  
Dumping .....2.5



**Tyres**  
400/80 - 24 156 A8 TL



**Forks (mm)**  
Length .....1200  
Width x thickness .....125 X 45  
Maximum distance between forks .....1040  
Carriage rotation .....126°



**Hydraulically operated brakes**  
**with oil-immersed multi discs on both axles**



**Perkins Engine**  
Type S: .....1104D-44T  
ST: .....1104D-44TA  
Capacity .....4 cyl. 4400 cm<sup>3</sup>  
Power (ISO 14396) S: .....70 kW/95 HP  
ST: .....74,5 kW/101 HP  
Maximum torque S: .....392 Nm at 1400 rpm  
ST: .....410 Nm at 1400 tr/mn  
Direct injection  
Water cooling



**Transmission** .....Torque Convertor  
Electro - Forward/Reverse selector  
4 gears forward and reverse  
Maximum travel speed .....25 km/h



**Hydraulics**  
Gear type: .....250 bars /105 l/mn  
Flow divider with priority to steering and brakes.

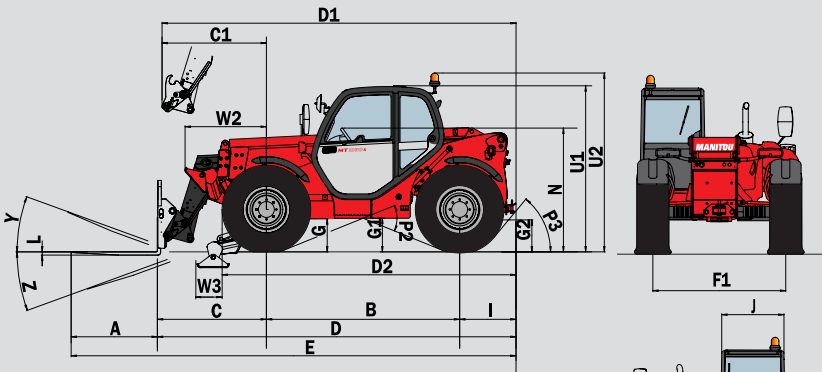
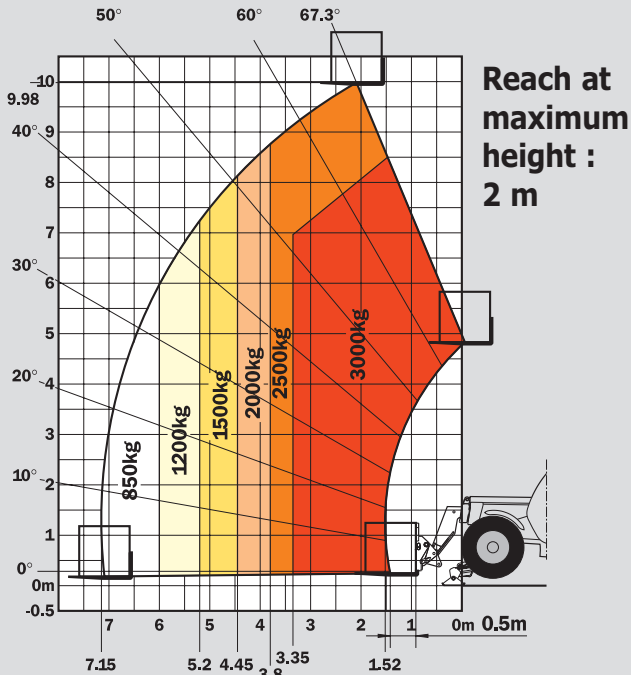


**Capacities**  
Cooling system .....18.5 l.  
Engine oil .....10.5 l.  
Hydraulic oil .....125 l.  
Transmission oil .....15.5 l.  
Fuel tank .....120 l.



**Weight unladen** (with forks) .....7470 kg  
**Overall width** .....2.26 m  
**Overall height** .....2.30 m  
**Turning radius** (outside wheels) .....3.75 m  
**Length up to carriage** .....4.99 m  
**Ground clearance** .....0.44 m  
**Drawbar pull** .....8200/8300 daN

Under Norme  
EN 1459  
annexe B



|    | mm   |
|----|------|
| A  | 1200 |
| B  | 2690 |
| C  | 1513 |
| C1 | 1602 |
| D  | 4992 |
| D1 | 5081 |
| D2 | 4064 |
| E  | 6192 |
| F  | 1846 |
| G  | 455  |
| G1 | 440  |
| G2 | 440  |
| G3 | 220  |
| I  | 789  |
| J  | 865  |
| K  | 1040 |
| L  | 45   |
| N  | 1690 |
| O  | 125  |
| P2 | 44°  |
| P3 | 53°  |
| R  | 3545 |
| S  | 7810 |
| T  | 3640 |
| U1 | 2300 |
| U2 | 2550 |
| V  | 4950 |
| V1 | 1310 |
| V2 | 3753 |
| V3 | 4200 |
| W  | 2261 |
| W1 | 2210 |
| W2 | 1132 |
| W3 | 340  |
| Y  | 12°  |
| Z  | 114° |

### Standard :

- Beacon
- Floating forks carriage
- Attachment hydraulic line
- Reverse alarm and lights

### Options :

- Wide range of attachments  
(buckets, jibs, made to measure attachments)
- Air conditioning
- Work lights
- ...



MANITOU BF SA

B.P. 249 - 44158 Ancenis Cedex - France  
Tel. : 33 2 40 09 10 11 / Export Department Fax : 33 2 40 09 10 97  
[www.manitou.com](http://www.manitou.com)

700022EN-C - 02/08 - BE 161/Ind. D



# MANITOU