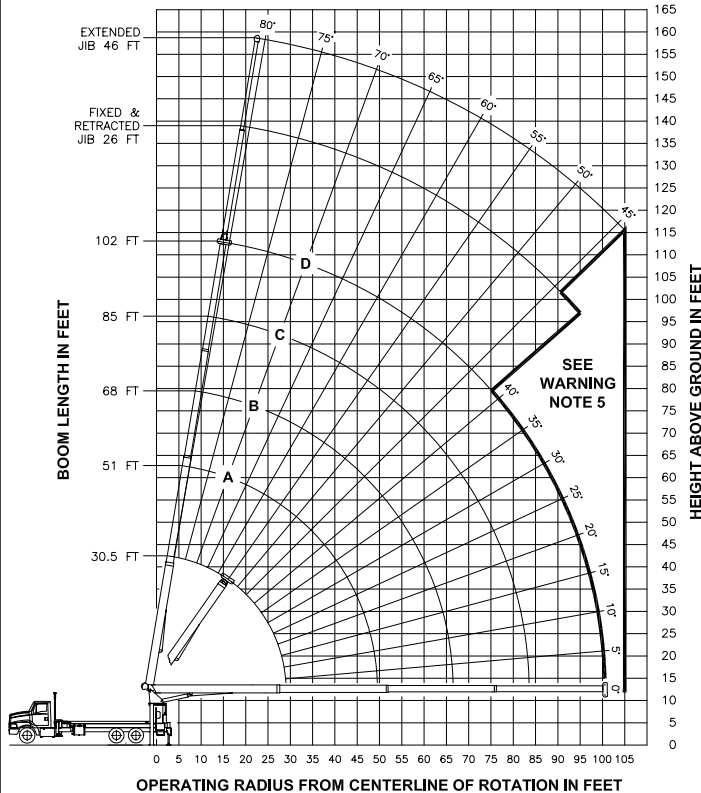




### RANGE DIAGRAM



### LMI OPERATING CODES

SETTING	CRANE CONFIGURATION	SETTING	CRANE WITH PERSONNEL LIFTING PLATFORM
#1---	MAIN BOOM	#5---	PERSONNEL LIFTING PLATFORM ON MAIN BOOM
#2---	FIXED JIB	#6---	PERSONNEL LIFTING PLATFORM ON FIXED JIB
#3---	TELESCOPIC JIB-RETRACTED	#7---	PERSONNEL LIFTING PLATFORM ON TELESCOPIC JIB-RETRACTED
#4---	TELESCOPIC JIB-EXTENDED	#8---	PERSONNEL LIFTING PLATFORM ON TELESCOPIC JIB-EXTENDED

### ALLOWABLE LINE PULL

1 PART	2 PART	3 PART	4 PART	5 PART	6 PART	7 PART	<b>WARNING</b>  ANTI-TWO-BLOCK SYSTEM MUST BE IN GOOD OPERATING CONDITION BEFORE OPERATING CRANE.  REFER TO THE OWNER'S MANUAL.  KEEP AT LEAST 3 WRAPS OF LOAD LINE ON THE DRUM AT ALL TIMES.  9/16" 6X25 IWRC (3.5:1 SF) - 29750 LBS MIN BREAKING STRENGTH 9/16" ROT RESISTANT (5.0:1 SF) - 37000 LBS MIN BREAKING STRENGTH
8500 LBS	17000 LBS	25500 LBS	34000 LBS	42500 LBS	51000 LBS	60000 LBS	
7400 LBS	14800 LBS	22200 LBS	29600 LBS	37000 LBS	44400 LBS	51800 LBS	

### DEDUCTIONS FROM RATED LOADS FOR LOAD HANDLING DEVICES SUPPLIED BY MANITEX

AUXILIARY BLOCK	50 LBS
WIRELINE SHEAVE HEAD	100 LBS
AUXILIARY WINCH	200 LBS
OVERHAUL BALL	SEE OVERHAUL BALL MFR. NAMEPLATE
LOAD BLOCK	SEE BLOCK MFR. NAMEPLATE
HOSE REEL	140 LBS
SWING AROUND JIB	SEE LOAD CHART

### WARNING

LIFTING OFF THE MAIN BOOM POINT WHILE THE JIB IS ERRECTED IS NOT INTENDED OR APPROVED.

### LOAD RATINGS IN LBS WITH OUTRIGGERS AND STABILIZERS EXTENDED

LMI CODE #1						JIB LOAD RATINGS WITH OUTRIGGERS AND STABILIZERS EXTENDED			
						FIXED JIB		TELESCOPIC JIB	
						LMI CODE #2	LMI CODE #3	LMI CODE #4	
BOOM ANGLE	BOOM LENGTH	BOOM ANGLE	BOOM LENGTH	BOOM ANGLE	BOOM LENGTH	BOOM ANGLE	BOOM LENGTH	BOOM ANGLE	BOOM LENGTH
BASE	1ST	2ND	3RD	BASE	1ST	2ND	3RD	BASE	1ST
30.5 FT	51 FT	68 FT	85 FT	102 FT	30.5 FT	51 FT	68 FT	102 FT	30.5 FT
5 80 60000					10 71 33510	79 22500			
8 75 39690					12 67 29120	77 22500			
10 71 33510	79 22500				15 60 24440	73 21710	79 20590		
12 67 29120	77 22500				20 48 19280	67 16910	74 15830	78 14420	81 10500
15 60 24440	73 21710	79 20590			25 33 15480	61 13850	70 12840	75 12180	78 9650
30 54 11700	65 10770	72 10140	76 8670	30 79 5300	79 5100				
35 47 9770	60 9240	68 8640	73 7670	35 77 4990	77 4730	79 3050			
40 38 7510	55 7720	64 7490	70 6490	40 75 4580	75 4310	77 3050			
45 27 5910	50 6110	60 6220	66 5590	45 72 4190	72 3910	76 3050			
50 43 4920	56 5030	63 4860	50 70 3830	50 70 3830	70 3550	74 2910			
55 36 3990	51 4100	60 4160	55 68 3480	55 68 3480	68 3110	72 2740			
60 28 3250	47 3360	56 3420	60 65 3020	60 65 3020	65 2670	70 2590			
65 15 2630	41 2760	53 2820	65 63 2630	63 2280	68 2410				
70 36 2250	49 2320	70 60 2310	60 1950	66 2130					
75 29 1820	45 1890	75 57 2010	57 1670	63 1880					
80 19 1450	40 1530	80 54 1640	54 1340	61 1610					
85 36 1210	85 51 1320	51 1030	59 1400						
90 29 930	90 48 1050	48 750	56 1200						
95 22 690	95 45 800	45 500	54 970						
100 100 42	580		51 750						
105 105			48 550						
490 LBS	290 LBS	220 LBS	180 LBS	150 LBS	DEDUCTIONS FOR STOWED FIXED JIB				
730 LBS	440 LBS	330 LBS	260 LBS	220 LBS	DEDUCTIONS FOR STOWED TELESCOPIC JIB				

### WARNING

- THE OPERATOR MUST READ AND UNDERSTAND THE OWNER'S MANUAL BEFORE OPERATING THIS CRANE.
- POSITIONING OR OPERATION OF CRANE BEYOND AREAS SHOWN ON THIS CHART IS NOT INTENDED OR APPROVED EXCEPT WHERE SPECIFIED IN OWNER'S MANUAL.
- LOADED BOOM ANGLES AT SPECIFIED BOOM LENGTHS GIVE ONLY AN APPROXIMATION OF THE OPERATING RADIUS. THE BOOM ANGLE BEFORE LOADING SHOULD BE GREATER TO ACCOUNT FOR DEFLECTIONS. DO NOT EXCEED THE OPERATING RADIUS FOR RATED LOADS.
- THE OPERATING RADIUS SHOWN IN THE JIB RATING CHART IS FOR FULLY EXTENDED BOOM ONLY. WHEN BOOM IS NOT FULLY EXTENDED, USE ONLY LOADED BOOM ANGLE TO DETERMINE LOAD RATING OF JIB.
- BOOM MUST BE FULLY RETRACTED WHEN JIB IS ERRECTED, BEFORE LOWERING BOOM THRU THIS AREA.
- FOR BOOM ANGLES NOT SHOWN ON JIB LOAD RATING CHART, USE RATING OF NEXT LOWER BOOM ANGLE.
- FOR BOOM LENGTHS NOT SHOWN, USE RATING OF NEXT SHORTER OR LONGER BOOM LENGTH, WHICHEVER IS LESS. FOR RADI NOT SHOWN, USE RATING OF NEXT LONGER RADIUS.
- CRANE LOAD RATINGS ON OUTRIGGERS ARE BASED ON FREELY SUSPENDED LOADS WITH THE MACHINE LEVELED AND STANDING ON A FIRM UNIFORM SUPPORTING SURFACE. NO ATTEMPT SHALL BE MADE TO MOVE A LOAD HORIZONTALLY ON THE GROUND IN ANY DIRECTION.
- PRACTICAL WORKING LOADS DEPEND ON SUPPORTING SURFACE, WIND, AND OTHER FACTORS AFFECTING STABILITY SUCH AS HAZARDOUS SURROUNDINGS, EXPERIENCE OF PERSONNEL, AND PROPER HANDLING, ALL OF WHICH MUST BE TAKEN INTO ACCOUNT BY THE OPERATOR.
- THE MAXIMUM LOAD WHICH MAY BE TELESCOPED IS LIMITED BY HYDRAULIC PRESSURE, BOOM ANGLE, AND BOOM LUBRICATION. IT IS SAFE TO ATTEMPT TO TELESCOPE ANY LOAD WITHIN THE LIMITS OF THE LOAD RATING CHART. BOOM MUST BE FULLY RETRACTED AGAINST BOOM STOPS AT ALL TIMES WHEN LIFTING MINIMUM BOOM LENGTH CAPACITY LOADS.

### INFORMATION

- DEDUCTIONS MUST BE MADE FROM RATED LOADS FOR STOWED JIB, OPTIONAL ATTACHMENTS, HOOKS, AND LOAD-BLOCKS (SEE DEDUCTION CHART). WEIGHTS OF SLINGS AND ALL OTHER LOAD HANDLING DEVICES SHALL BE CONSIDERED A PART OF THE LOAD.
- CRANE LOAD RATINGS WITH OUTRIGGERS ARE BASED ON OUTRIGGERS AND STABILIZERS EXTENDED AND SET WITH MACHINE LEVELED.
- LOAD RATINGS ABOVE THE HEAVY LINE ARE STRUCTURALLY LIMITED CAPACITIES. LOAD RATINGS BELOW THE HEAVY LINE ARE STABILITY LIMITED CAPACITIES AND DO NOT EXCEED 85% OF TIPPING.

### DEFINITIONS

- OPERATING RADIUS IS THE HORIZONTAL DISTANCE FROM THE AXIS OF ROTATION TO THE CENTER OF THE VERTICAL HOIST LINE OR TACKLE WITH LOAD APPLIED.
- LOADED BOOM ANGLE AS SHOWN IN THE COLUMN HEADED BY  $\angle$ , IS THE INCLUDED ANGLE BETWEEN THE HORIZONTAL AND LONGITUDINAL AXES OF THE BOOM BEAD AFTER LIFTING RATED LOAD AT RATED RADIUS.



MODEL  
102WL

CRANE MEETS ANSI B30.5  
REQUIREMENTS

7300096-006 NR

