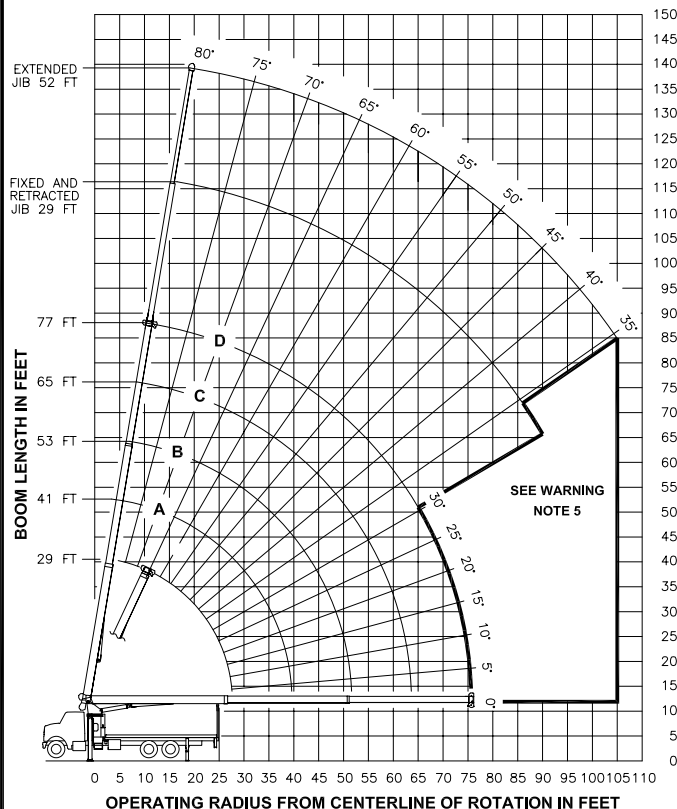




RANGE DIAGRAM



HEIGHT ABOVE GROUND IN FEET

LOAD RATINGS IN LBS WITH OUTRIGGERS AND STABILIZERS EXTENDED										JIB LOAD RATINGS WITH OUTRIGGERS AND STABILIZERS EXTENDED			
HEIGHT ABOVE GROUND IN FEET	BOOM LENGTH IN FEET	BOOM ANGLE		BOOM LENGTH AND MARKER		1ST		2ND		OPERATING RADIUS IN FEET	BOOM ANGLE	BOOM LENGTH IN FEET	52 FT JIB FOR ALL BOOM LENGTHS SEE WARNING NOTE 4
		A	B	C	D	A	B	C	D				
5	80	44000								10			
8	74	29600								12			
10	69	24870	76	22000						14			
12	65	21510	73	20160	78	16490				17			
14	60	18960	70	17710	75	14390	79	13860		20			
17	53	16080	66	15010	72	12070	76	11580	79	11500			
20	45	13830	61	13010	69	10390	73	9930	77	9560			
25	27	10490	52	10600	63	8410	69	8000	73	7670	25	79	4820
30			42	8770	56	7010	64	6660	69	6350	30	77	4270
35			30	7120	49	5930	59	5650	65	5390	35	74	3790
40					41	5030	53	4860	61	4640	40	71	3330
45					31	4170	47	4210	56	4030	45	68	2900
50					17	3070	40	3630	51	3530	50	65	2540
55							33	3070	46	3080	55	62	2220
60							22	2410	40	2680	60	59	1940
65									34	2280	65	55	1660
70									25	1840	70	51	1400
75									13	1220	75	47	1170
80											80	43	960
85											85	39	760
90											90	34	560
95											95		460
100											100		430
105											105		390

680 LBS. 480 LBS. 370 LBS. 300 LBS. 260 LBS. DEDUCTIONS FOR STOWED JIB

WARNING

1. THE OPERATOR MUST READ AND UNDERSTAND THE OWNER'S MANUAL BEFORE OPERATING THIS CRANE.
2. POSITIONING OR OPERATION OF CRANE BEYOND AREAS SHOWN ON THIS CHART IS NOT INTENDED OR APPROVED EXCEPT WHERE SPECIFIED IN OWNER'S MANUAL.
3. LOADED BOOM ANGLES AT SPECIFIED BOOM LENGTHS GIVE ONLY AN APPROXIMATION OF THE OPERATING RADIUS. THE BOOM ANGLE BEFORE LOADING SHOULD BE GREATER TO ACCOUNT FOR DEFLECTIONS. DO NOT EXCEED THE OPERATING RADIUS FOR RATED LOADS.
4. THE OPERATING RADIUS SHOWN IN THE JIB RATING CHART IS FOR FULLY EXTENDED BOOM ONLY. WHEN BOOM IS NOT FULLY EXTENDED, USE ONLY LOADED BOOM ANGLE TO DETERMINE LOAD RATING OF JIB. DO NOT RELY ON CAPACITY ALERT SYSTEM WHEN LIFTING FROM JIB.
5. BOOM MUST BE FULLY RETRACTED WHEN JIB IS ERCTED, BEFORE LOWERING BOOM THRU THIS AREA.
6. FOR BOOM ANGLES NOT SHOWN ON JIB LOAD RATING CHART, USE RATING OF NEXT LOWER BOOM ANGLE.
7. FOR BOOM LENGTHS NOT SHOWN, USE RATING OF NEXT LONGER BOOM LENGTH. FOR RADI NOT SHOWN, USE RATING OF NEXT LONGER RADIUS.
8. CRANE LOAD RATINGS ON OUTRIGGERS ARE BASED ON FREELY SUSPENDED LOADS WITH THE MACHINE LEVELED AND STANDING ON A FIRM UNIFORM SUPPORTING SURFACE. NO ATTEMPT SHALL BE MADE TO MOVE A LOAD HORIZONTALLY ON THE GROUND IN ANY DIRECTION.
9. PRACTICAL WORKING LOADS DEPEND ON SUPPORTING SURFACE, WIND, AND OTHER FACTORS AFFECTING STABILITY SUCH AS HAZARDOUS SURROUNDINGS, EXPERIENCE OF PERSONNEL, AND PROPER HANDLING, ALL OF WHICH MUST BE TAKEN INTO ACCOUNT BY THE OPERATOR.
10. THE MAXIMUM LOAD WHICH MAY BE TELESCOPED IS LIMITED BY HYDRAULIC PRESSURE, BOOM ANGLE, AND BOOM LUBRICATION. IT IS SAFE TO ATTEMPT TO TELESCOPE ANY LOAD WITHIN THE LIMITS OF THE LOAD RATING CHART.

INFORMATION

1. DEDUCTIONS MUST BE MADE FROM RATED LOADS FOR STOWED JIB, OPTIONAL ATTACHMENTS, HOOKS, AND LOAD-BLOCKS (SEE DEDUCTION CHART). WEIGHTS OF SLINGS AND ALL OTHER LOAD HANDLING DEVICES SHALL BE CONSIDERED A PART OF THE LOAD.
2. CRANE LOAD RATINGS WITH OUTRIGGERS ARE BASED ON OUTRIGGERS AND STABILIZERS EXTENDED AND SET WITH MACHINE LEVELED.
3. LOAD RATINGS ABOVE THE HEAVY LINE ARE STRUCTURALLY LIMITED CAPACITIES. LOAD RATINGS BELOW THE HEAVY LINE ARE STABILITY LIMITED CAPACITIES AND DO NOT EXCEED 85% OF TIPPING.

DEFINITIONS

1. OPERATING RADIUS IS THE HORIZONTAL DISTANCE FROM THE AXIS OF ROTATION TO THE CENTER OF THE VERTICAL HOIST LINE OR TACKLE WITH LOAD APPLIED.
2. LOADED BOOM ANGLE AS SHOWN IN THE COLUMN HEAD BY  $\angle$ , IS THE INCLUDED ANGLE BETWEEN THE HORIZONTAL AND LONGITUDINAL AXES OF THE BOOM BASE AFTER LIFTING RATED LOAD AT RATED RADIUS.

ALLOWABLE LINE PULL

1 PART LINE	2 PART LINE	3 PART LINE	4 PART LINE	5 PART LINE	6 PART LINE
8500 LBS	17000 LBS	25500 LBS	34000 LBS	42500 LBS	44000 LBS
7400 LBS	14800 LBS	22200 LBS	29600 LBS	37000 LBS	44000 LBS

WARNING

ANTI-TWO-BLOCK SYSTEM MUST BE IN GOOD OPERATING CONDITION BEFORE OPERATING CRANE. REFER TO OWNER'S MANUAL.

KEEP AT LEAST 3 WRAPS OF LOAD LINE ON DRUM AT ALL TIMES.

9/16" - 6X25 IWRC (3.5:1 S.F.)  
29750 LBS. BREAKING STRENGTH  
9/16" ROT RESISTANT (5.0:1 S.F.)  
37000 LBS. BREAKING STRENGTH

DEDUCTIONS FROM RATED LOADS FOR LOAD HANDLING DEVICES SUPPLIED BY MANITEX.

AUXILIARY BLOCK ----- SEE OVERHALL BALL MFRG NAMEPLATE 50 LBS  
OVERHAUL BALL ----- SEE BLOCK MFRG NAMEPLATE 160 LBS  
SINGLE SHEAVE LOAD BLOCK ----- SEE LOAD CHART  
HOSE REEL -----  
SWING AROUND JIB -----

WARNING

LIFTING OFF THE MAIN BOOM POINT WHILE THE SWING AROUND JIB IS ERCTED IS NOT INTENDED OR APPROVED.

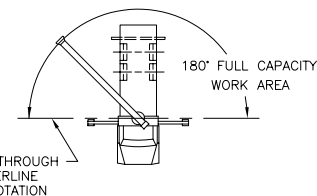


MODELS

2277C & 2277T

CRANE MEETS ANSI B30.5 REQUIREMENTS

7300087-001 NR



AREA OF OPERATION