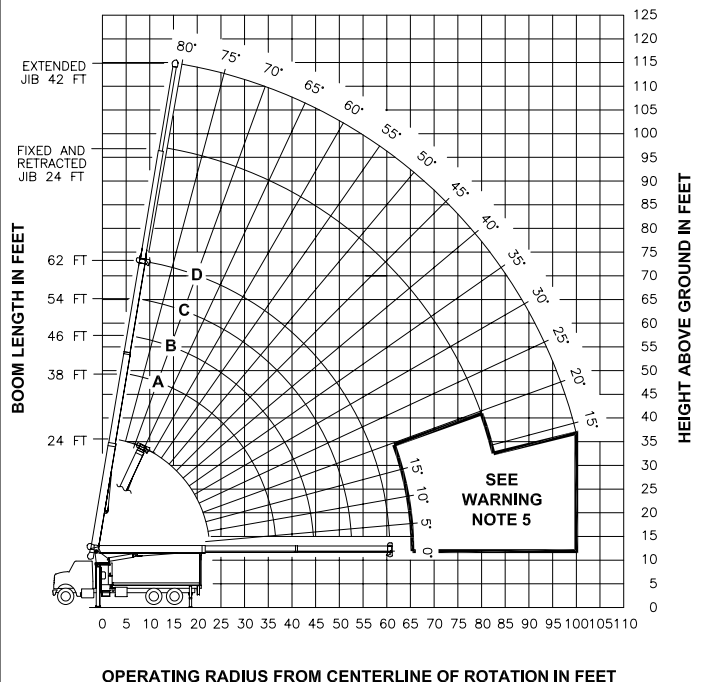




### RANGE DIAGRAM



### ALLOWABLE LINE PULL

1 PART LINE	2 PART LINE	3 PART LINE	4 PART LINE	5 PART LINE	6 PART LINE
8500 LBS	17000 LBS	25500 LBS	34000 LBS	42500 LBS	44000 LBS
7400 LBS	14800 LBS	22200 LBS	29600 LBS	37000 LBS	44000 LBS

### WARNING

ANTI-TWO-BLOCK SYSTEM MUST BE IN GOOD OPERATING CONDITION BEFORE OPERATING CRANE. REFER TO OWNER'S MANUAL.

KEEP AT LEAST 3 WRAPS OF LOAD LINE ON DRUM AT ALL TIMES.

9/16" - 6X25 IWRC (3.5:1 S.F.)  
29750 LBS. BREAKING STRENGTH  
9/16" ROT RESISTANT (5.0:1 S.F.)  
37000 LBS. BREAKING STRENGTH

### DEDUCTIONS FROM RATED LOADS FOR LOAD HANDLING DEVICES SUPPLIED BY MANITEX

AUXILIARY BLOCK ——— 50 LBS  
OVERHAUL BALL ——— SEE OVERHAUL BALL MFGR NAMEPLATE  
LOAD BLOCK ——— SEE BLOCK MFGR NAMEPLATE  
HOSE REEL ——— 160 LBS  
SWING AROUND JIB ——— SEE LOAD CHART

### WARNING

LIFTING OFF THE MAIN BOOM POINT WHILE THE SWING AROUND JIB IS ERECTED IS NOT INTENDED OR APPROVED.

### LOAD RATINGS IN LBS WITH OUTRIGGERS AND STABILIZERS EXTENDED

OPERATING RADIUS FEET	LOADED BOOM ANGLE BOOM LENGTH AND MARKER	BASE				1ST				2ND			
		A	B	C	D	A	B	C	D	A	B	C	D
5	77	44000											
8	70	31020											
10	64	26230	75	22930	78	20050							
12	59	22780	72	20820	75	17220	78	16760					
14	53	20120	68	18370	73	15120	76	14670	78	14290			
17	43	16950	63	15640	69	12800	73	12370	75	12020			
20	30	14090	58	13630	65	11100	69	10710	73	10370			
25		48	11140	57	9070	63	8730	68	8450				
30		37	9180	49	7610	57	7350	62	7100				
35		19	7000	40	6410	50	6290	57	6090	35	68	4320	72
40				28	5260	43	5410	51	5290	40	64	3820	69
45						33	4600	44	4610	45	60	3380	66
50						20	3640	37	4000	50	56	2970	63
55										27	3360	55	52
60										14	2500	60	47
65												65	43
70												70	37
75												75	31
80												80	22
85													
90													
95													
100													

### JIB LOAD RATINGS WITH OUTRIGGERS AND STABILIZERS EXTENDED

OPERATING RADIUS FEET	BOOM ANGLE LOADED	24 FT JIB FOR ALL BOOM LENGTHS SEE WARNING NOTE 4	BOOM ANGLE LOADED	42 FT JIB FOR ALL BOOM LENGTHS SEE WARNING NOTE 4
5				
8				
10				
12				
14				
17	80	7240		
20	78	6600		
25	75	5670	78	4080
30	71	4920	75	3660
35	68	4320	72	3310
40	64	3820	69	3000
45	60	3380	66	2720
50	56	2970	63	2470
55	52	2620	60	2260
60	47	2320	57	2080
65	43	2060	54	1920
70	37	1840	50	1760
75	31	1590	46	1610
80	22	1230	42	1480
85			37	1340
90			32	1210
95			26	1070
100			17	740

580 LBS. 370 LBS. 310 LBS. 260 LBS. 230 LBS. DEDUCTIONS FOR STOWED JIB

### WARNING

1. THE OPERATOR MUST READ AND UNDERSTAND THE OWNER'S MANUAL BEFORE OPERATING THIS CRANE.
2. POSITIONING OR OPERATION OF CRANE BEYOND AREAS SHOWN ON THIS CHART IS NOT INTENDED OR APPROVED EXCEPT WHERE SPECIFIED IN OWNER'S MANUAL.
3. LOADED BOOM ANGLES AT SPECIFIED BOOM LENGTHS GIVE ONLY AN APPROXIMATION OF THE OPERATING RADIUS. THE BOOM ANGLE BEFORE LOADING SHOULD BE GREATER TO ACCOUNT FOR DEFLECTIONS. DO NOT EXCEED THE OPERATING RADIUS FOR RATED LOADS.
4. THE OPERATING RADIUS SHOWN IN THE JIB RATING CHART IS FOR FULLY EXTENDED BOOM ONLY. WHEN BOOM IS NOT FULLY EXTENDED, USE ONLY LOADED BOOM ANGLE TO DETERMINE LOAD RATING OF JIB. DO NOT RELY ON CAPACITY ALERT SYSTEM WHEN LIFTING FROM JIB.
5. BOOM MUST BE FULLY RETRACTED WHEN JIB IS ERECTED, BEFORE LOWERING BOOM THRU THIS AREA.
6. FOR BOOM ANGLES NOT SHOWN ON JIB LOAD RATING CHART, USE RATING OF NEXT LOWER BOOM ANGLE.
7. FOR BOOM LENGTHS NOT SHOWN, USE RATING OF NEXT LONGER BOOM LENGTH. FOR RADI NOT SHOWN, USE RATING OF NEXT LONGER RADIUS.
8. CRANE LOAD RATINGS ON OUTRIGGERS ARE BASED ON FREELY SUSPENDED LOADS WITH THE MACHINE LEVELED AND STANDING ON A FIRM UNIFORM SUPPORTING SURFACE. NO ATTEMPT SHALL BE MADE TO MOVE A LOAD HORIZONTALLY ON THE GROUND IN ANY DIRECTION.
9. PRACTICAL WORKING LOADS DEPEND ON SUPPORTING SURFACE, WIND, AND OTHER FACTORS AFFECTING STABILITY SUCH AS HAZARDOUS SURROUNDINGS, EXPERIENCE OF PERSONNEL, AND PROPER HANDLING, ALL OF WHICH MUST BE TAKEN INTO ACCOUNT BY THE OPERATOR.
10. THE MAXIMUM LOAD WHICH MAY BE TELESCOPED IS LIMITED BY HYDRAULIC PRESSURE, BOOM ANGLE, AND BOOM LUBRICATION. IT IS SAFE TO ATTEMPT TO TELESCOPE ANY LOAD WITHIN THE LIMITS OF THE LOAD RATING CHART.

### INFORMATION

1. DEDUCTIONS MUST BE MADE FROM RATED LOADS FOR STOWED JIB, OPTIONAL ATTACHMENTS, HOOKS, AND LOAD-BLOCKS (SEE DEDUCTION CHART). WEIGHTS OF SLINGS AND ALL OTHER LOAD HANDLING DEVICES SHALL BE CONSIDERED A PART OF THE LOAD.
2. CRANE LOAD RATINGS WITH OUTRIGGERS ARE BASED ON OUTRIGGERS AND STABILIZERS EXTENDED AND SET WITH MACHINE LEVELED.
3. LOAD RATINGS ABOVE THE HEAVY LINE ARE STRUCTURALLY LIMITED CAPACITIES. LOAD RATINGS BELOW THE HEAVY LINE ARE STABILITY LIMITED CAPACITIES AND DO NOT EXCEED 85% OF TIPPING.

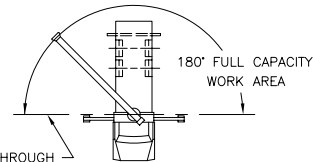
### DEFINITIONS

1. OPERATING RADIUS IS THE HORIZONTAL DISTANCE FROM THE AXIS OF ROTATION TO THE CENTER OF THE VERTICAL HOIST LINE OR TACKLE WITH LOAD APPLIED.
2. LOADED BOOM ANGLE AS SHOWN IN THE COLUMN HEADED BY  $\angle$  IS THE INCLUDED ANGLE BETWEEN THE HORIZONTAL AND LONGITUDINAL AXES OF THE BOOM BASE AFTER LIFTING RATED LOAD AT RATED RADIUS.



MODELS  
2262C & 2262T

CRANE MEETS ANSI B30.5 REQUIREMENTS



LINE THROUGH  
CENTERLINE  
OF ROTATION

AREA OF OPERATION

7300087-002 NR