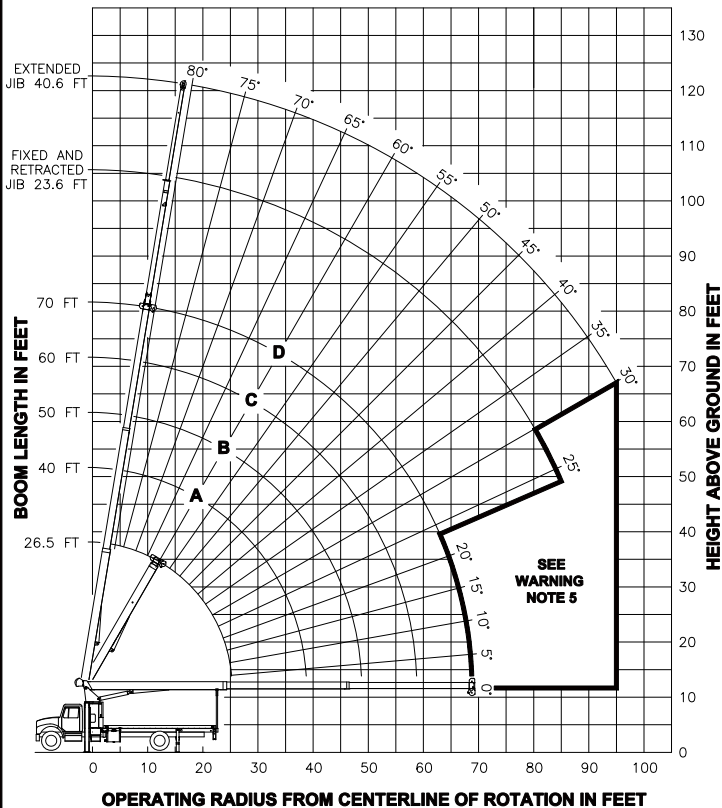




RANGE DIAGRAM



LMI OPERATING CODES

SETTING	CRANE CONFIGURATION	SETTING	CRANE WITH PERSONNEL LIFTING PLATFORM
#1---	MAIN BOOM	#5---	PERSONNEL LIFTING PLATFORM ON MAIN BOOM
#2---	FIXED JIB	#6---	PERSONNEL LIFTING PLATFORM ON FIXED JIB
#3---	TELE JIB - RETRACTED	#7---	PERSONNEL LIFTING PLATFORM ON TELE JIB - RETRACTED
#4---	TELE JIB - EXTENDED		

WARNING: LIFTING PERSONNEL FROM EXTENDED JIB IS NOT APPROVED

ALLOWABLE LINE PULL

1 PART LINE	2 PART LINE	3 PART LINE	4 PART LINE	5 PART LINE
8500 LBS	17000 LBS	25500 LBS	34000 LBS	38000 LBS
7700 LBS	15400 LBS	23100 LBS	30800 LBS	38000 LBS

WARNING

ANTI-TWO-BLOCK SYSTEM MUST BE IN GOOD OPERATING CONDITION BEFORE OPERATING CRANE. REFER TO OWNER'S MANUAL.

KEEP AT LEAST 3 WRAPS OF LOAD LINE ON DRUM AT ALL TIMES.

9/16" - 6X25 IWRC (3.5:1 S.F.) 29750 LBS. BREAKING STRENGTH
9/16" ROT RESISTANT (5.0:1 S.F.) 38800 LBS. BREAKING STRENGTH

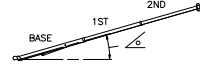
DEDUCTIONS FROM RATED LOADS FOR LOAD HANDLING DEVICES SUPPLIED BY MANITEX

OVERHAUL BALL ----- SEE OVERHAUL BALL MFG. NAMEPLATE
LOAD BLOCKS ----- SEE BLOCK MFG. NAMEPLATE
HOSE REEL ----- 160 LBS
SWING AROUND JIB ----- SEE LOAD CHART

WARNING

LIFTING OFF THE MAIN BOOM POINT WHILE THE JIB IS ERECTED IS NOT INTENDED OR APPROVED.

LOAD RATINGS IN LBS WITH OUTRIGGERS AND STABILIZERS EXTENDED

LMI CODE #1											OUTRIGGERS AND STABILIZERS EXTENDED					
OPERATING RADIUS	LOADING BOOM ANGLE	BOOM LENGTH AND MARKER									FIXED JIB		TELESCOPIC JIB			
			LMI CODE #2		LMI CODE #3		LMI CODE #4		LMI CODE #4							
			JIB LENGTH FOR ALL BOOM LENGTHS		JIB LENGTH FOR ALL BOOM LENGTHS		JIB LENGTH FOR ALL BOOM LENGTHS		JIB LENGTH FOR ALL BOOM LENGTHS							
			SEE WARNING NOTE 4		SEE WARNING NOTE 4		SEE WARNING NOTE 4		SEE WARNING NOTE 4							
5	79	38000	40	24000	50	18000	60	13420	70	9400	23.6 FT	23.6 FT	40.6 FT			
8	73	27010														
10	68	22330	76	21100	80	18000										
12	63	18410	73	18230	77	16320	80	13420								
15	55	14420	69	14600	74	13940	77	11900	80	9400						
20	40	10350	61	10540	68	10600	72	9810	76	8180	80	4400	80	4200		
25	12	7830	52	8070	61	8130	67	8170	71	7000	78	4200	78	4000		
30			41	6400	54	6470	62	6510	67	6050	30	75	4000	75	3800	
35			28	5160	47	5240	56	5280	62	5280	35	71	3600	71	3380	
40					37	4200	50	4260	58	4300	40	68	3220	68	3010	
45					25	3360	43	3420	52	3460	45	65	2880	65	2650	
50							35	2790	47	2820	50	61	2580	61	2340	
55							24	2290	40	2330	55	57	2310	57	2060	
60									33	1930	60	53	2020	53	1790	
65									23	1600	65	49	1690	49	1460	
70											70	45	1410	45	1180	
75											75	40	1180	40	950	
80											80	34	980	34	750	
85											85	27	810	27	570	
90											90				39	700
95											95				34	560
0	6650	0	3820	0	2700	0	1960	0	1370							
350 LBS			240 LBS		190 LBS		160 LBS		140 LBS		DEDUCTIONS FOR STOWED FIXED JIB					
530 LBS			350 LBS		280 LBS		240 LBS		200 LBS		DEDUCTIONS FOR STOWED TELESCOPIC JIB					

WARNING

- THE OPERATOR MUST READ AND UNDERSTAND THE OWNER'S MANUAL BEFORE OPERATING THIS CRANE.
- POSITIONING OR OPERATION OF CRANE BEYOND AREAS SHOWN ON THIS CHART IS NOT INTENDED OR APPROVED EXCEPT WHERE SPECIFIED IN OWNER'S MANUAL.
- LOADED BOOM ANGLES AT SPECIFIED BOOM LENGTHS GIVE ONLY AN APPROXIMATION OF THE OPERATING RADIUS. THE BOOM ANGLE BEFORE LOADING SHOULD BE GREATER TO ACCOUNT FOR DEFLECTIONS. DO NOT EXCEED THE OPERATING RADIUS FOR RATED LOADS.
- THE OPERATING RADIUS SHOWN IN THE JIB RATING CHART IS FOR FULLY EXTENDED BOOM ONLY. WHEN BOOM IS NOT FULLY EXTENDED, USE ONLY LOADED BOOM ANGLE TO DETERMINE LOAD RATING OF JIB.
- BOOM MUST BE FULLY RETRACTED WHEN JIB IS ERECTED, BEFORE LOWERING BOOM THROUGH THIS AREA.
- FOR BOOM ANGLES NOT SHOWN ON JIB LOAD RATING CHART, USE RATING OF NEXT LOWER BOOM ANGLE.
- FOR BOOM LENGTHS NOT SHOWN, USE RATING OF NEXT LONGER BOOM LENGTH. FOR RADI NOT SHOWN, USE RATING OF NEXT LONGER RADIUS.
- CRANE LOAD RATINGS ON OUTRIGGERS ARE BASED ON FREELY SUSPENDED LOADS WITH THE MACHINE LEVELED AND STANDING ON A FIRM UNIFORM SUPPORTING SURFACE. NO ATTEMPT SHALL BE MADE TO MOVE A LOAD HORIZONTALLY ON THE GROUND IN ANY DIRECTION.
- PRACTICAL WORKING LOADS DEPEND ON SUPPORTING SURFACE, WIND, AND OTHER FACTORS AFFECTING STABILITY SUCH AS HAZARDOUS SURROUNDINGS, EXPERIENCE OF PERSONNEL, AND PROPER HANDLING, ALL OF WHICH MUST BE TAKEN INTO ACCOUNT BY THE OPERATOR.
- THE MAXIMUM LOAD WHICH MAY BE TELESCOPED IS LIMITED BY HYDRAULIC PRESSURE, BOOM ANGLE, AND BOOM LUBRICATION. IT IS SAFE TO ATTEMPT TO TELESCOPE ANY LOAD WITHIN THE LIMITS OF THE LOAD RATING CHART. BOOM MUST BE FULLY RETRACTED AGAINST BOOM STOPS AT ALL TIMES WHEN LIFTING MINIMUM BOOM LENGTH CAPACITY LOADS.

INFORMATION

- DEDUCTIONS MUST BE MADE FROM RATED LOADS FOR STOWED JIB, OPTIONAL ATTACHMENTS, HOOKS, AND LOADBLOCKS (SEE DEDUCTION CHART). WEIGHTS OF SLINGS AND ALL OTHER LOAD HANDLING DEVICES SHALL BE CONSIDERED A PART OF THE LOAD.
- CRANE LOAD RATINGS WITH OUTRIGGERS ARE BASED ON OUTRIGGERS AND STABILIZERS EXTENDED AND SET WITH MACHINE LEVELED.
- LOAD RATINGS ABOVE THE HEAVY LINE ARE STRUCTURALLY LIMITED CAPACITIES. LOAD RATINGS BELOW THE HEAVY LINE ARE STABILITY LIMITED CAPACITIES AND DO NOT EXCEED 85% OF TIPPING.

DEFINITIONS

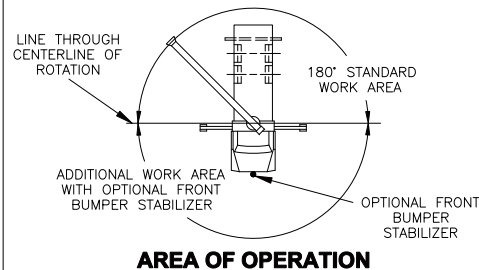
- OPERATING RADIUS IS THE HORIZONTAL DISTANCE FROM THE AXIS OF ROTATION TO THE CENTER OF THE VERTICAL HOIST LINE OR TACKLE WITH LOAD APPLIED.
- LOADED BOOM ANGLE AS SHOWN IN THE COLUMN HEADED BY \angle , IS THE INCLUDED ANGLE BETWEEN THE HORIZONTAL AND LONGITUDINAL AXES OF THE BOOM BASE AFTER LIFTING RATED LOAD AT RATED RADIUS.

Manitex

MODELS
1970C & 1970T

CRANE MEETS ANSI B30.5 REQUIREMENTS

7300086-009 A



AREA OF OPERATION