



AO-02343

L2001R Short Tower

AO-02344

L2000R Tall Tower

AO-02346

L2001 Short Tower

AO-02347

L2000 Tall Tower



Heavy-duty industrial grade contactors.
No automotive-grade solenoids used.

Power rotation utilizes robust, all steel
turntable bearing with self-locking worm
gear final drive.

Boom positions at 0°, 35°, and 55° for
flexibility needed to adapt to any job.

Industrial planetary hoist provides fast
line speeds, power efficiency and
rugged dependability.

2001R - 2000R CRANES



specifications

Maintainer 2000R & 2001R cranes come complete with 25' power cable, a crane ground cable, a 225 amp fuse, a 4' frame grounding cable, 16' remote control pendant, mounting bolts and owner's manual. 600 amp CCA battery and 100 amp alternator recommended. Stifflegs recommended for most installations

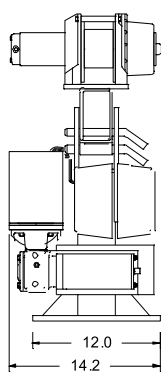
MODELS

AO-02343	L2001R Short Tower (elect. 12 volt, Power Rotate) 2,000 lbs. max. cap. (6500 ft*lb) Manual extend from 4' to 6' 6", 16 ft. tethered remote, crane is painted standard powder-coat white (consult factory for other colors), installation included.
AO-02344	L2000R Tall Tower (elect. 12 volt, Power Rotate) 2000 lbs. max. cap. (6500 ft* lb) Manual extend from 4' to 6' 6", 16 ft. tethered remote, crane is painted standard powder-coat white (consult factory for other colors), installation included.
AO-02346	L2001 Short Tower (elect. 12 volt, Manual Rotate) 2000 lbs. max. cap. (8000 ft* lb) Manual extend from 4' to 6' 6", 16 ft. tethered remote, crane is painted standard powder-coat white (consult factory for other colors), installation included.
AO-02347	L2000 Tall Tower (elect. 12 volt, Manual Rotate) 2000 lbs. max. cap. (8000 ft* lb) Manual extend from 4' to 6' 6", 16 ft. tethered remote, crane is painted standard powder-coat white (consult factory for other colors), installation included.

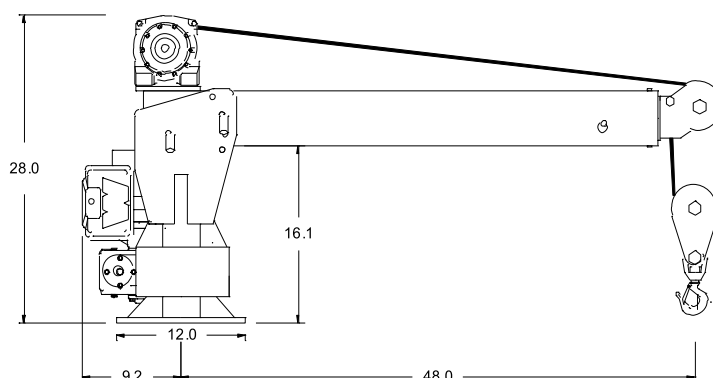
Maximum Lifting Capacities

2000 lbs	2'4"
2000 lbs	2'10"
1857 lbs	3'6"
1625 lbs	4'0"
1500 lbs	4'4"
1259 lbs	5'2"
1181 lbs	5'6"
1040 lbs	6'3"
1000 lbs	6'6"

- Crane Base Plate: 14" x 16"
- Bolt Pattern: 14 3/4" x 11 1/2"



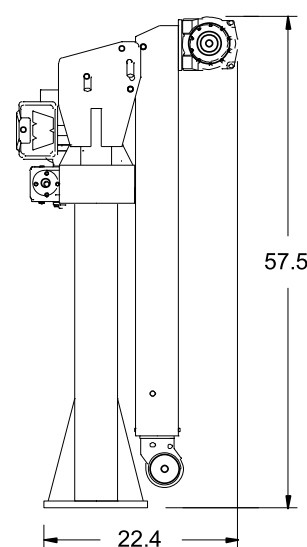
L2001R From Rear



L2001R From Side

FEATURES

- Boom extends manually from 4' to 6'6".
- Boom locks in 4 positions for lifting: 0°, 15°, 35°, and 55°.
- Boom folds down when not in use on 2000R models.
- Smooth, 12 volt planetary hoist with low maintenance gearbox, high reliability and efficient operation.
- Hoist drum and rope sheaves meet ANSI standards (18 times wire rope diameter).
- 28' x 3/16" wire rope. 30 feet per minute hoist line speed.
- Industrial grade motor contactors. No automotive type solenoids.
- Load block with safety latch and swivel for loads over 1200 pounds.
- All steel worm gear rotation drive is mounted on steel slewing ring crane bearing and provides power rotation.
- Powder coat finish for high gloss and durability.
- 16' non-metallic remote control pendant controls hoisting and rotation.
- Polymer wire rope pulleys are permanently lubricated to extend life and reduce wire rope wear.
- Mounting bolts provided (4 ea. 3/4" dia. Gr. 8).



L2000R From Rear

Maintainer

MAINTAINER CORPORATION OF IOWA, INC.

1701 S. 2nd Avenue Sheldon, Iowa 51201

 Ph: 800-831-8588 Fax: 712-324-3526 www.maintainer.com