



Mainliner

H14025 CRANE





SPECIFICATIONS



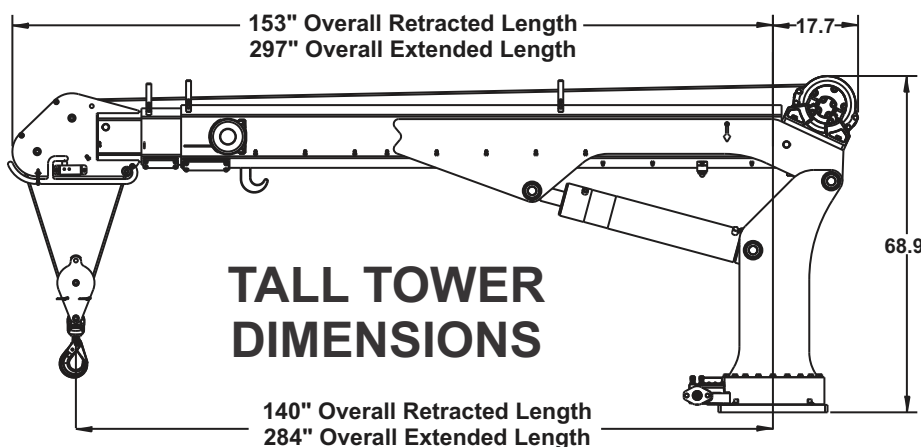
specifications

- 2466 lbs. (998 KGS)
- 22" x 24" Mounting Space Required
- Mounting requires (8) 1"-8 (GRD-8) bolts
- Hydraulic Requirements: 10-12 GPM@3000 PSI



features

- 14,000 lb. max. capacity
- 90,000 ft*lb capacity
- 25' hydraulic reach
- Advanced Crane Control - standard
- Boom-Mounted planetary winch
- Dual part line standard - single part capable
- Total operational range 91° (-13 to +78)
- Low profile double sheave design
- Anti-Two block relocation (*left side*)
- User-Friendly load block storage
- 140' of 7/16" diameter wire rope
- Wireless remote - standard
- 615° of rotation
- Hexagonal boom
- Tall tower configurations
- Closed-center/load sensing hydraulic system (*open center optional*)
- OSHA 1910.180/ANSI B30.5 compliant



ratings

H14025 CRANE CAPACITY CHART 90,000 FT*LB CRANE RATING

HYDRAULIC
EXTENSION TO 24' 9"

MAX SINGLE LINE CAPACITY IS 7000 LBS (3175 KG)
FOR GREATER LOADS USE 2 PART LINE
OUTRIGGERS MUST BE EXTENDED AND DOWN

CAPACITIES ARE IN LBS. (*KGS.)

DEDUCT FROM CAPACITIES
THE WEIGHTS OF LOAD
HANDLING DEVICES

