



MC174 CRM Mini Crane

The Maeda MC174 sets the standard that other mini cranes try to achieve. Its super slim width of 590mm coupled with its 1.72 ton lifting capacity make it absolutely unparalleled. This fantastic machine also retains all of the other benefits of the machines in the Maeda range including a 2 year warranty, remote control and unrivalled build quality and usability.



Features at a glance...

- 1.72 Ton Max capacity
- 5.5m Max Working Height
- Super Slim Body Width (590mm)
- Low Ground Pressure
- Manoeuvrability & Stability
- Programmable Moment Limiter
- Hydrostatic Transmission
- Tilt Sensor/Alarm
- Rubber Tracks
- High Speed Winch
- 2 Travel Speeds
- Remote Control
- 2 Year Warranty

More Images...





... consider the possibilities



Specifications

Capacity	Maximum	1.72t x 1m
Working Radius	Maximum	5.17m x 220kg
Lifting Height	Maximum	5.5m x 770kg
Dimensions	MC174 CRM	2000mm x 590mm x 1300mm
Weight	MC174 CRM	1290kg
Hook Speed	Maximum	10.9m / min. (4 falls, 3rd layer)
Hoist Rope	Type	IWRC 6 x Fi (29) Ø 6mm x 35m
Telescopic System	Boom length Telescoping speed Boom type	1.83m - 5.45m 3.62m / 15 sec. Fully automatic 4 section pentagonal telescopic boom
Boom Hoist System	Hoist angle / speed	3° - 77° / 12 sec.
Slew System	Slew angle / speed	360° continuous / 2.0 rpm
Outrigger System	Type Maximum extended dimensions	4 Multi position box type. Hydraulic cylinders with lock valves (Length) 3335mm x (Front) 3060mm x (Rear) 2885mm
Traction System	Drive Travel speed Gradability Ground length x width Ground pressure	Hydrostatic type, stepless forward and reverse 0 - 3.3km/h 20° 1044mm x 180mm (Track dimensions) 0.34 kgf / cm²
Engine	Model Type Rated output Starting method Fuel tank capacity	Mitsubishi GM401LE 1 Cylinder, Air Cooled, Petrol 6.6kw / 1800 rpm Electric Petrol / 6L
Standard Equipment	Cable remote control, overwind protection, hydraulic safety valves, working light, hour-meter, 4-fall hook block, black rubber tracks, moment limiter, EMO switch, level and working status lamp.	
Optional Equipment	White rubber tracks, single fall hook, two fall hook, searcher hook and radio remote control, LPG option.	

Total rated load Outriggers at Maximum position

1.83m boom		2.97m boom		4.21m boom		5.45m boom	
Working radius (m)	Total rated load (kg)	Working radius (m)	Total rated load (kg)	Working radius (m)	Total rated load (kg)	Working radius (m)	Total rated load (kg)
<1.0	1720	<1.0	1720	<1.3	1320	<1.7 or	770
1.30	1320	1.30	1320	1.50	1120	2.00	700
1.55	1090	1.50	1120	2.00	820	2.50	660
		2.00	820	2.50	670	2.80	580
		2.50	670	3.00	530	3.00	530
		2.69	580	3.50	420	3.50	410
				3.93	370	4.00	330
						4.50	270
						5.17	220

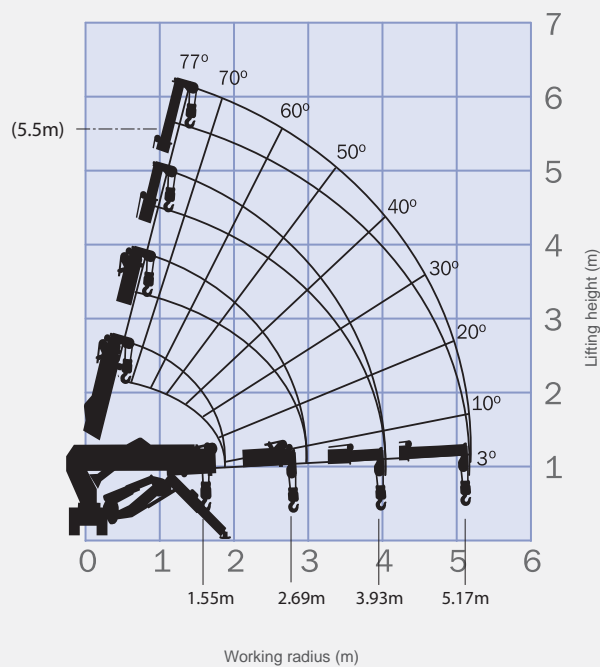
Total rated load Outriggers at any other position

1.83m boom		2.97m boom		4.21m boom		5.45m boom	
Working radius (m)	Total rated load (kg)	Working radius (m)	Total rated load (kg)	Working radius (m)	Total rated load (kg)	Working radius (m)	Total rated load (kg)
<1.0	1220	<1.0	1220	<1.3	940	<1.7	720
1.30	940	1.30	940	1.50	810	2.00	600
1.55	790	1.50	810	2.00	600	2.50	390
		2.00	600	2.50	390	2.80	330
		2.50	390	3.00	300	3.00	300
		2.69	310	3.50	220	3.50	220
				3.93	180	4.00	180
						4.50	140
						5.17	100

Maximum Reach Below Ground Level

Four Fall	Two Fall	Single Fall
7m	14m	28m

Working Range Diagram



The Working Range Chart does not take into account boom deflection under load.

Dimensions

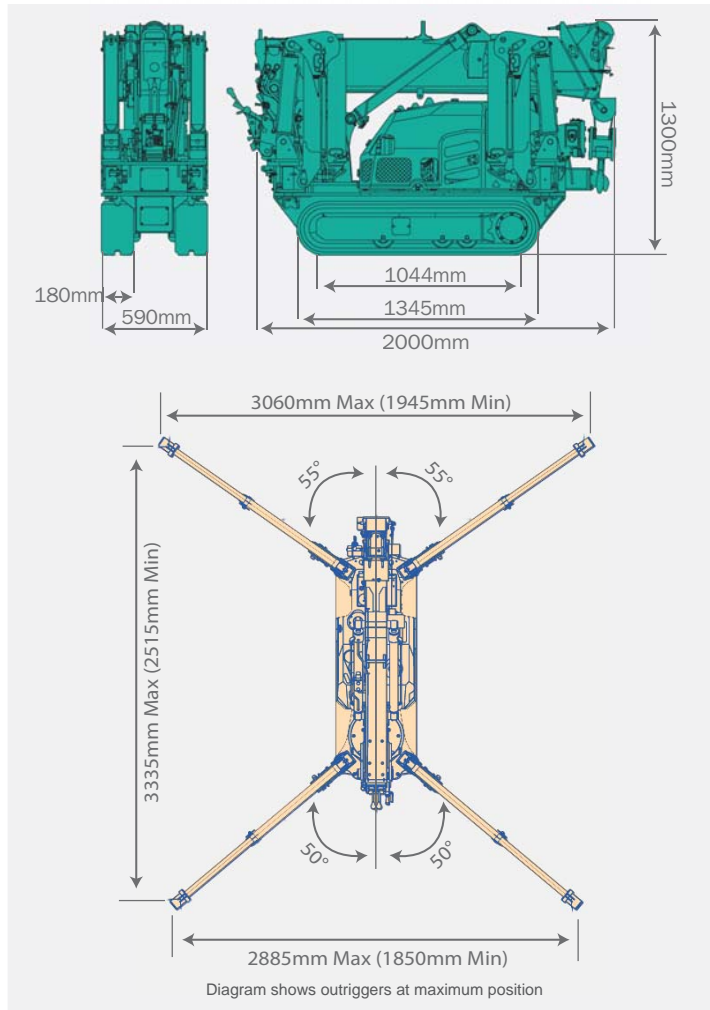


Diagram shows outriggers at maximum position