

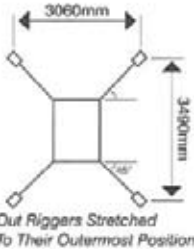


MAEDA MC-275C 2.5T CRAWLER CRANE

ONLY
WEIGHS
1.8 tonne



NEWLY DEVELOPED
HIGH POWER **2.5** TONNE
CAPACITY



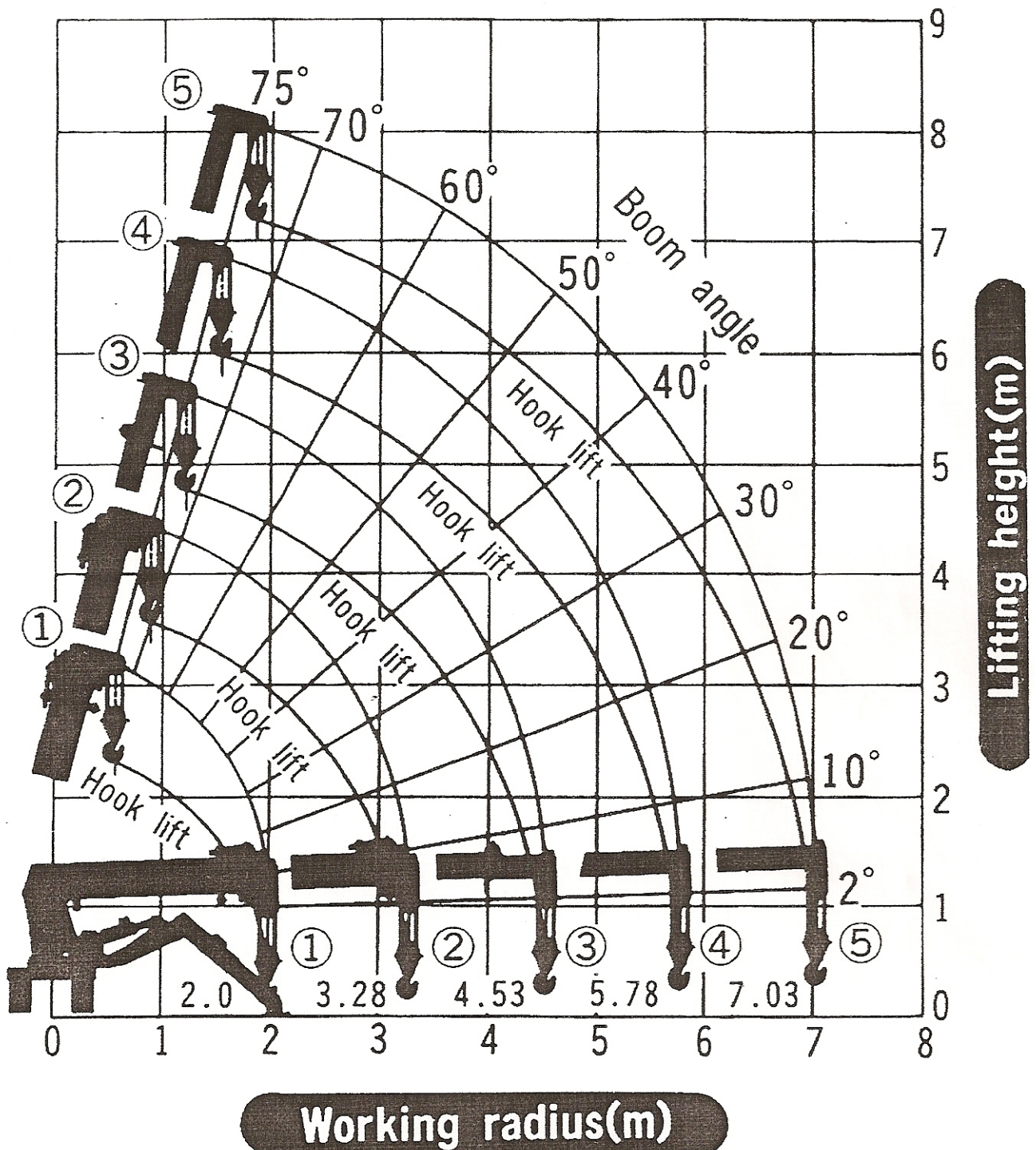
Goes through doorways,
into lifts and allmac



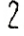
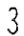
LOAD RATING TABLE WITH THE OUTRIGGERS STRETCHED TO THEIR OUTERMOST POSITION								LOAD RATING TABLE WITH THE OUTRIGGERS COMPACTED							
Boom ①, ①+②		Boom ①+②+③		Boom ①+②+③+④		Boom ①+②+③+④+⑤		Boom ①, ①+②		Boom ①+②+③		Boom ①+②+③+④		Boom ①+②+③+④+⑤	
Working radius (m)	Overall load radius (m)	Working radius (m)	Overall load radius (m)	Working radius (m)	Overall load radius (m)	Working radius (m)	Overall load radius (m)	Working radius (m)	Overall load radius (m)	Working radius (m)	Overall load radius (m)	Working radius (m)	Overall load radius (m)	Working radius (m)	Overall load radius (m)
1.5 or less	2520	2.5 or less	1570	3.8 or less	700	4.0 or less	550	1.5 or less	1160	2.0 or less	850	3.0 or less	410	3.0 or less	410
1.8	2080	3.0	1020	4.0	550	4.5	400	1.8	970	2.2	740	3.6	320	3.5	320
3.0	1920	3.5	760	4.5	400	5.0	330	2.0	850	2.5	600	4.0	230	4.0	230
2.5	1570	4.0	550	5.0	330	5.5	290	2.5	600	3.0	410	4.5	200	4.5	200
2.7	1270	4.538	400	5.5	290	6.0	260	2.7	520	3.5	320	5.0	150	5.0	150
1.0	1020			5.78	270	6.5	220	3.0	410	4.0	230	5.5	130	6.5	The use of crane is forbidden.
3.28	880					7.03	180	3.28	300	4.538	150	5.83	120	7.03	



MC-275C Working range chart



CAUTION

1. Working range chart does not include boom deflections.
2. The case that more than a half of the first mark  comes out from boom 2 is applicable to boom 1+2+3+4.
3. The case that more than a half of the second mark  comes out from boom 2 is applicable to boom 1+2+3+4+5.

388-300320C



MC-275C

OUTRIGGER REACTION FORCE CALCULATION

WORKING RADIUS

1500 mm

LIFTING LOAD

2520 kg

STAGE

3

EXTENDED OUTRIGGERS

MAX

θ	FR	FL	RL	RR
0	854	854	1408	1408
5	873	838	1377	1436
10	893	823	1345	1463
15	915	810	1313	1487
20	939	798	1279	1508
25	964	788	1246	1526
30	991	780	1213	1540
35	1020	773	1180	1551
40	1050	767	1148	1558
45	1082	763	1118	1562
50	1114	760	1088	1561
55	1147	759	1061	1557
60	1181	760	1035	1548
65	1214	762	1011	1536
70	1248	766	989	1521
75	1281	771	970	1502
80	1313	779	952	1480
85	1343	789	936	1456
90	1372	800	922	1429
95	1399	814	911	1401
100	1423	830	901	1370
105	1444	849	892	1339
110	1462	869	886	1307
115	1476	892	881	1275
120	1487	917	878	1242
125	1493	945	876	1210
130	1496	974	875	1179
135	1495	1005	876	1148
140	1490	1038	878	1119
145	1480	1072	881	1091
150	1467	1107	885	1065
155	1450	1143	891	1040
160	1429	1179	899	1017
165	1405	1215	908	996
170	1379	1250	918	977
175	1349	1285	930	960
180	1318	1318	944	944

MAX (kg)	1496	1318	1408	1562
				(kg)