



MODEL 644B-37

SPECIFICATIONS

ENGINE:

- JOHN DEERE — 4039D
80 HP @ 2500 RPM
- JOHN DEERE — 4039DT
110 HP @ 2500 RPM
- CUMMINS — 4B3.9
75 HP @ 2500 RPM
- CUMMINS — 4BT3.9
102 HP @ 2500 RPM

TRANSMISSION:

- 3-SPEED SEMI-AUTOMATIC, FWD. & REV.
- COLUMN-MOUNTED SHIFT LEVER
- NEUTRAL START SWITCH
- H.D. TRANSMISSION OIL COOLER
- DECLUTCH SWITCH ALLOWS BRAKE PEDAL TO DISENGAGE TRANSMISSION WHEN BRAKE IS APPLIED.

AXLES:

- OUTBOARD PLANETARY WITH DOUBLE REDUCTION
- 4-WHEEL DRIVE
- TORQUE PROPORTIONING FRONT DIFFERENTIAL
- STEERING — 3 MODES: 4 WHEEL ROUND, 2 WHEEL, AND CRAB
- HYDRAULIC FULL POWER STEERING WITH 2 DOUBLE-ACTING STEER CYLINDERS PER AXLE

BRAKES:

- 4-WHEEL, FULLY ENCLOSED, WET DISC
- HYDRAULIC ACCUMULATOR STORED ENERGY BRAKING FOR DEAD ENGINE STOPS
- "FAIL-SAFE" PARK BRAKE: SPRING APPLIED HYDRAULIC RELEASE
- DASH-MOUNTED INDICATOR LIGHTS

ELECTRICAL SYSTEM:

- 12 VOLT, NEGATIVE GROUND
- 925 AMP COLD CRANKING, MAINTENANCE FREE BATTERY
- 65 AMP H.D. ALTERNATOR
- CIRCUIT BREAKER PROTECTED SYSTEM

FILTRATION:

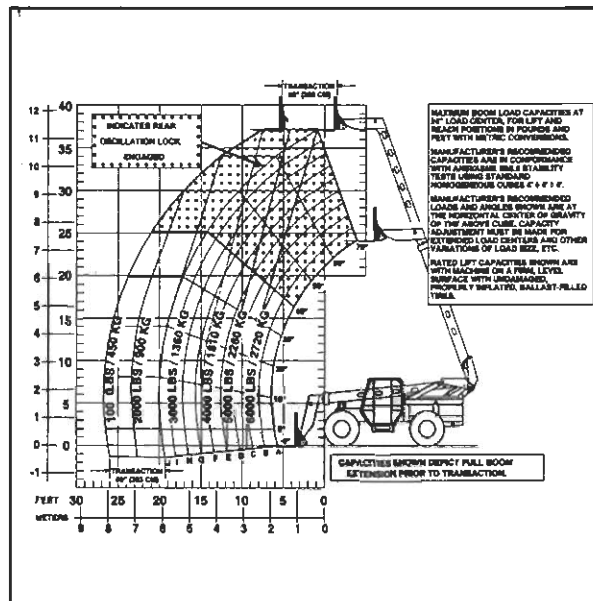
- AIR CLEANER — 2 STAGE DRY TYPE WITH REPLACEABLE ELEMENTS. (VISUAL SERVICE IND. STD.)
- ENGINE OIL LUBE — FULL FLOW SPIN-ON CARTRIDGE TYPE WITH BYPASS
- FUEL FILTER WITH WATER SEPARATOR & DRAIN.
- TRANSMISSION — SPIN-ON TYPE WITH SAFETY BYPASS
- MAIN HYDRAULICS — 10 MICRON FULL FLOW FILTER ELEMENT WITH SAFETY BYPASS

HYDRAULIC SYSTEM:

- 2-SECTION GEAR PUMP: 26 GPM TO MAIN HYDRAULICS, 18 GPM TO STEERING, BRAKE PRIORITIES AND HYDRAULIC SYSTEM. EXTRA FINE METERING & SELF CENTERING HYDRAULIC CONTROL VALVES.

STANDARD EQUIPMENT:

- SEAT BELT
- HORN
- REVERSE WARNING ALARM
- NEUTRAL START SWITCH
- SKID RESISTANT FLOOR MATERIAL



STANDARD EQUIPMENT (cont'd):

- RIGHT SIDE REAR VIEW MIRROR
- ANTI-FREEZE PROTECTION TO - 30°F
- MACHINE LEVEL INDICATOR
- FULL INSTRUMENTATION INCLUDING: FUEL GAUGE, WATER TEMP. GAUGE, HOUR METER, OIL PRESSURE GAUGE, TRANS. OIL TEMP. GAUGE, VOLTMETER, PARK BRAKE APPLIED LIGHT, LOW BRAKE PRESSURE LIGHT, TRANS. DECLUTCH LIGHT
- AUTOMATIC FORK LEVELING
- HYD/HYD. JOYSTICK CONTROLS (PILOT OPERATED)
- 2-SECTION "FULL" HYDRAULIC SLIDE BOOM
- AUXILIARY HYDRAULICS TO FORK CARRIAGE
- FRAME LEVELING 12-1/2" L & R
- TIE DOWN LUGS
- 13:00 X 24 - 10 PLY TIRES
- QUICK ATTACH
- REAR AXLE STABILIZER SYSTEM
- OPERATOR'S COMPARTMENT ROPS/FOPS
- CONFORMS WITH ANSI/ASME B56.6, 1992

OPTIONAL EQUIPMENT:

- 50.5" FORK CARRIAGE (10° R-L) (TILT/NON-TILT)
- 74" FRAMERS' FORK CARRIAGE (TILT/NON-TILT)
- DUAL FORK POSITIONING CARRIAGES (50.5" & 74")
- 2" X 4" - 42"/48"/60" FORKS
- 1-3/4" X 6" - 48"/60" LUMBER FORKS
- CUBING FORKS (2/4/6)
- 4,500 LB CAPACITY HYDRAULIC WINCH, BOOM MOUNTED
- 3/4 CUBIC YD HYD. OPERATED CONCRETE HOPPER
- 10' TRUSS BOOM (W/WO 2,000 LB CAP. HYD. OPERATED WINCH)
- AUXILIARY HYDRAULICS FOR SECOND ACCESSORY
- 1.25 CU. YD BUCKET (LIGHT MATERIAL)
- CAB ENCLOSURE
- HEATER
- AIR CONDITIONING/HEATER
- AM/FM STEREO CASSETTE WITH DUAL SPEAKERS
- ROADWAY LIGHT PACKAGE
- WORK LIGHT PACKAGES
- TOOL BOX

OPERATING SPECIFICATIONS:

LIFT AND CARRY CAPACITY	6,000 LBS
MAX. LIFT HEIGHT	37'
MAX. "LANDING HEIGHT"	37'
TRANSACTION	80"
MAX. HORIZONTAL FORWARD REACH	27'
MAX. REACH @ MAX. LIFT	8'
CAPACITY @ MAX. REACH	1,000 LBS
BELOW GRADE	16"
OUTSIDE TURNING RADIUS	13' 8"
GROUND CLEARANCE	16"
OVERALL HEIGHT	95"
OVERALL WIDTH	8'
OVERALL LENGTH	25'9" (W/42" Forks)
WHEELBASE	124"
WEIGHT	20,860 LBS

LULL® INDUSTRIES, INC.

3045 Hwy. 13, St. Paul, MN 55121. Tel 612-454-4300
©Copyright 1994 LULL INDUSTRIES, INC. All Rights Reserved