



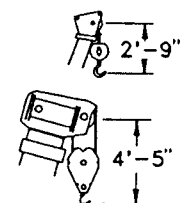
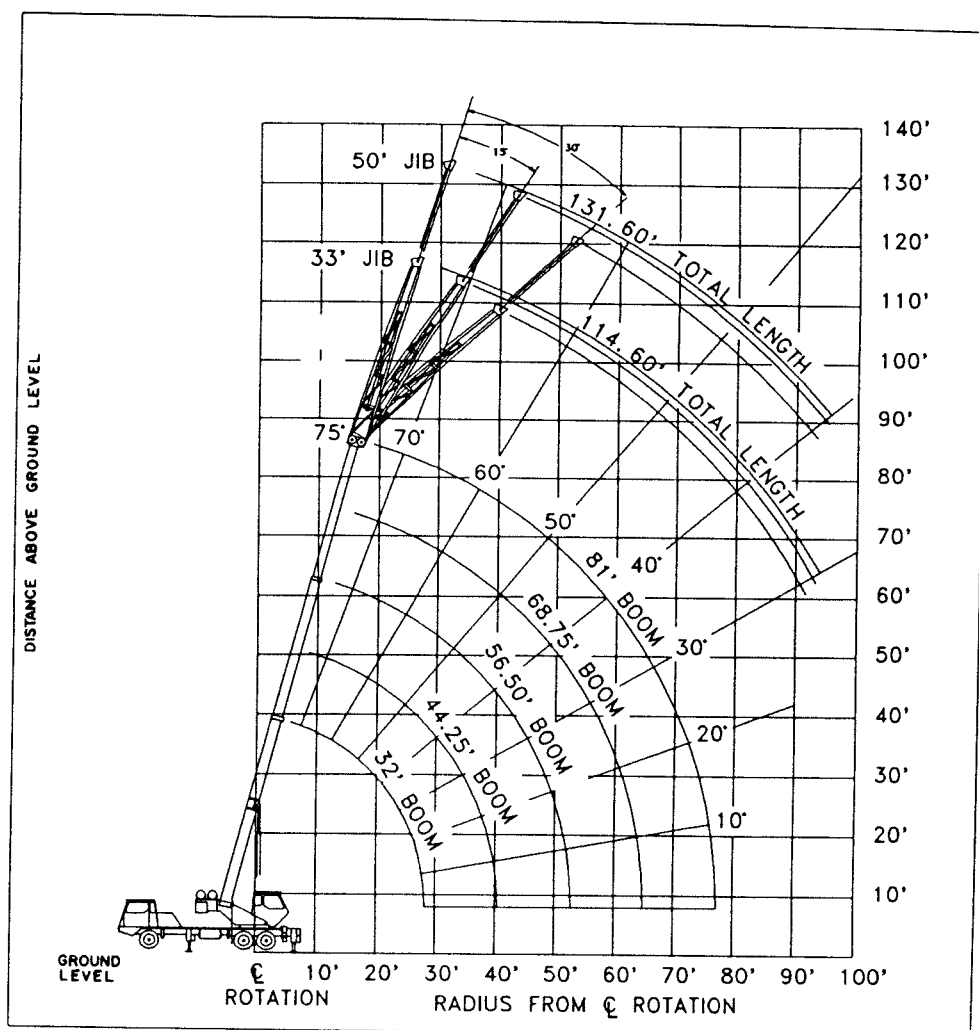
View thousands of Crane Specifications on FreeCraneSpecs.com



View thousands of Crane Specifications on FreeCraneSpecs.com

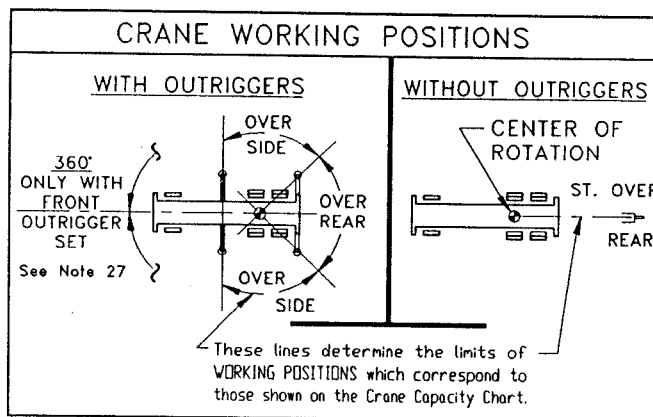
LORAIN® MCH 300D SERIES

carrier-mounted hydraulic crane
with offsetting jib. 35-ton capacity
range diagram &
capacity charts



DIMENSIONS ARE FOR LARGEST KOEHRING FURNISHED HOOK BLOCK AND HEADACHE BALL. WITH ANTI-TWO BLOCK ACTIVATED.

Range Diagram (32'-81' boom)



Capacity Charts — Pounds (32'-81' boom)

MCH 300D SERIES

IMPORTANT: This specification sheet is not to be used as load rating chart in the machine as data may be subject to change.

CAPACITY: 35 TON
COUNTERWEIGHT
LOWER CHASSIS: ON FRONT BUMPER
1850 lb. (SEE NOTE 1)
UPPER STRUCTURE:
W/AUX. WINCH 4300 lb.
W/O AUX. WINCH 5100 lb.

BOOM LENGTH 32-81 ft.
OUTRIGGER SPREAD 18 ft.
STABILITY PCT.
ON OUTRIGGERS 85%
ON TIRES 75%
PCSA CLASS 10-91

ON OUTRIGGERS																
R A D I U S	BOOM LENGTH 32 FT.		BOOM LENGTH 44.25 FT.		BOOM LENGTH 56.50 FT.		BOOM LENGTH 68.75 FT.		BOOM LENGTH 81 FT.		R A D I U S					
	REAR	SIDE	REAR	SIDE	REAR	SIDE	REAR	SIDE	REAR	SIDE						
10	64	70,000*	70,000*	72	69,000*	69,000*					10					
12	60	63,000*	63,000*	69	60,900*	60,900*	74	52,100*	52,100*		12					
15	54	50,100*	50,100*	65	50,300*	49,600*	70	45,900*	45,900*	74	31,000*	31,000*	15			
20	41	38,200*	33,600*	58	36,800*	34,000*	65	37,100*	34,200*	70	25,800*	25,800*	20			
25	27	27,900*	21,500*	50	28,500*	22,000*	60	28,800*	22,200*	66	21,900*	21,900*	25			
30				39	22,900*	15,700*	54	23,100*	15,900*	61	19,100*	16,000*	30			
35				24	17,800*	11,800*	47	18,000*	12,000*	56	16,900*	12,100*	35			
40				19	14,100*	9,100*	39	14,500*	9,400*	50	14,600*	9,500*	40			
45							29	11,900*	7,400*	43	12,000*	7,600*	45			
50							19	9,900*	6,000*	38	10,100*	6,100*	50			
55										29	8,500*	5,000*	43	8,600*	5,100*	55
60										21	7,300*	4,100*	37	7,400*	4,100*	60
65													33	6,300*	3,400*	65
70													24	5,500*	2,800*	70
75													16	4,700*	2,200*	75

33'SIDE STOW JIB ON OUTRIGGERS												50'SIDE STOW JIB ON OUTRIGGERS											
R A D I U S	MAX. BOOM & 0° Offset 114.60'		R A D I U S	MAX. BOOM & 15° Offset 113.8'		R A D I U S	MAX. BOOM & 30° Offset 110.9'		R A D I U S	MAX. BOOM & 0° Offset 131.60'		R A D I U S	MAX. BOOM & 15° Offset 130.20'		R A D I U S	MAX. BOOM & 30° Offset 125.60'		R A D I U S					
	REAR	SIDE		REAR	SIDE		REAR	SIDE		REAR	SIDE		REAR	SIDE		REAR	SIDE		REAR	SIDE	REAR	SIDE	
75	29	10,000*	10,000*	36	7,300*	7,300*	43	5,500*	5,500*	34	5,300*	5,300*	46	3,600*	3,600*	56	2,800*	2,800*	75				
73	33	10,000*	10,000*	41	7,000*	7,000*	47	5,200*	5,200*	39	4,900*	4,900*	51	3,400*	3,400*	59	2,700*	2,700*	73				
70	39	9,600*	9,600*	46	6,600*	6,500*	52	5,000*	5,000*	45	4,500*	4,500*	56	3,300*	3,300*	65	2,500*	2,500*	70				
67	44	8,700*	8,700*	51	6,200*	6,200*	56	4,800*	4,800*	52	4,100*	4,100*	62	3,100*	3,100*	70	2,500*	2,500*	67				
64	50	8,000*	6,700*	56	5,900*	5,700*	62	4,600*	4,600*	58	3,900*	3,900*	68	2,900*	2,900*	76	2,400*	2,400*	64				
61	55	6,700*	5,600*	61	5,600*	4,900*	68	4,500*	4,300*	64	3,600*	3,600*	74	2,800*	2,800*	81	2,300*	2,300*	61				
58	60	6,000*	4,600*	66	5,400*	4,300*	70	4,400*	3,900*	70	3,300*	3,300*	80	2,700*	2,700*	86	2,300*	2,300*	58				
54	66	5,100*	3,700*	71	4,600*	3,600*	75	4,000*	3,100*	79	3,200*	2,700*	86	2,500*	2,500*	92	2,200*	2,200*	54				
50	72	4,400*	2,800*	77	5,000*	2,500*	80	3,700*	2,500*	87	2,900*	2,100*	93	2,400*	2,200*	98	2,200*	1,900*	50				
46	77	3,900*	2,200*	82	3,500*	2,300*	85	3,300*	2,100*	91	2,700*	2,000*	99	2,300*	1,800*	103	2,100*	1,500*	46				
42	83	3,500*	1,800*	87	3,100*	1,900*	90	3,000*	1,600*	97	2,500*	1,400*	104	2,200*	1,300*	107	2,100*	1,200*	42				
38	87	3,100*	1,300*	92	2,800*	1,300*	94	2,900*		103	2,400*	1,100*	109	2,100*	1,000*	111	2,000*	1,000*	38				
34	92	2,800*		97	2,600*		98	2,600*		110	2,100*		113	2,000*		115	2,000*		34				
30	97	2,500*		99	2,300*		101	2,500*		114	1,900*		116	1,900*		118	1,900*		30				
26	101	2,200*		102	2,100*					117	1,700*		119	1,700*					26				
22	105			103	2,000*					120	1,600*		121	1,600*					22				

ON TIRES STRAIGHT OVER REAR ONLY

R A D I U S	PICK & CARRY MAIN BOOM CAPACITIES	R A D I U S
10	16,700	10
12	14,500	12
15	11,300	15
20	7,100	20
25	4,700	25
30	3,000	30
35	2,000	35
40	1,400	40

NOTES FOR ON TIRES CAPACITIES

- A. FOR PICK AND CARRY OPERATIONS, BOOM MUST BE CENTERED OVER THE REAR OF THE CRANE WITH SWING BRAKE LOCKED OR WITH MECHANICAL SWING LOCK ENGAGED, IF SO EQUIPPED. USE MINIMUM BOOM POINT HEIGHT AND KEEP LOAD CLOSE TO GROUND SURFACE.
- B. THE LOAD SHOULD BE RESTRAINED FROM SWINGING. NO ON-TIRE OPERATION WITH JIB ERECTED.
- C. WITHOUT OUTRIGGERS, NEVER MANEUVER THE BOOM BEYOND LISTED LOAD RADI FOR APPLICABLE TIRES USED TO ENSURE STABILITY.
- D. CREEP SPEED IS CRANE MOVEMENT OF LESS THAN 200 FT. (61m) IN 30 MINUTES PERIOD AND NOT EXCEEDING 1.0 MPH (1.6 Km/H).

E. REFER TO GENERAL NOTES FOR ADDITIONAL INFORMATION.

NOTES FOR JIB CAPACITIES

- F. FOR ALL BOOM LENGTHS LESS THAN THE MAXIMUM WITH A JIB ERECTED, THE RATED LOADS ARE DETERMINED BY BOOM ANGLE ONLY IN THE APPROPRIATED COLUMN.
- G. FOR BOOM ANGLE NOT SHOWN, USE THE CAPACITY OF THE NEXT LOWER BOOM ANGLE.
- H. LISTED RADII ARE FOR FULLY EXTENDED BOOM ONLY.
- I. LOWER CHASSIS:
1850 Lbs. CWT. ON FRONT BUMPER.
W/FRONT P.T.O. ONLY
1550 Lbs. CWT. (1850 Lbs. EQUIV.).
W/FRONT OUTRIGGERS ONLY:
1550 Lbs. CWT. (1850 Lbs. EQUIV.).
W/FRONT P.T.O. & OUTRIGGERS:
1350 Lbs. CWT. (1850 Lbs. EQUIV.).

RECOMMENDED TIRE PRESSURE (PSI)	
TIRE SIZE	11.00X22.5-16PR
LIFT ON TIRES	95
ROADING	75

REDUCTION IN MAIN BOOM CAPACITY

All Jibs in Stowed Position 0 Lbs.
33'-50' Side Stow Jib Erected Slinger Retracted 3,600 Lbs.
33'-50' Side Stow Jib Erected Slinger Extended 4,100 Lbs.

HOOK BLOCK WEIGHTS

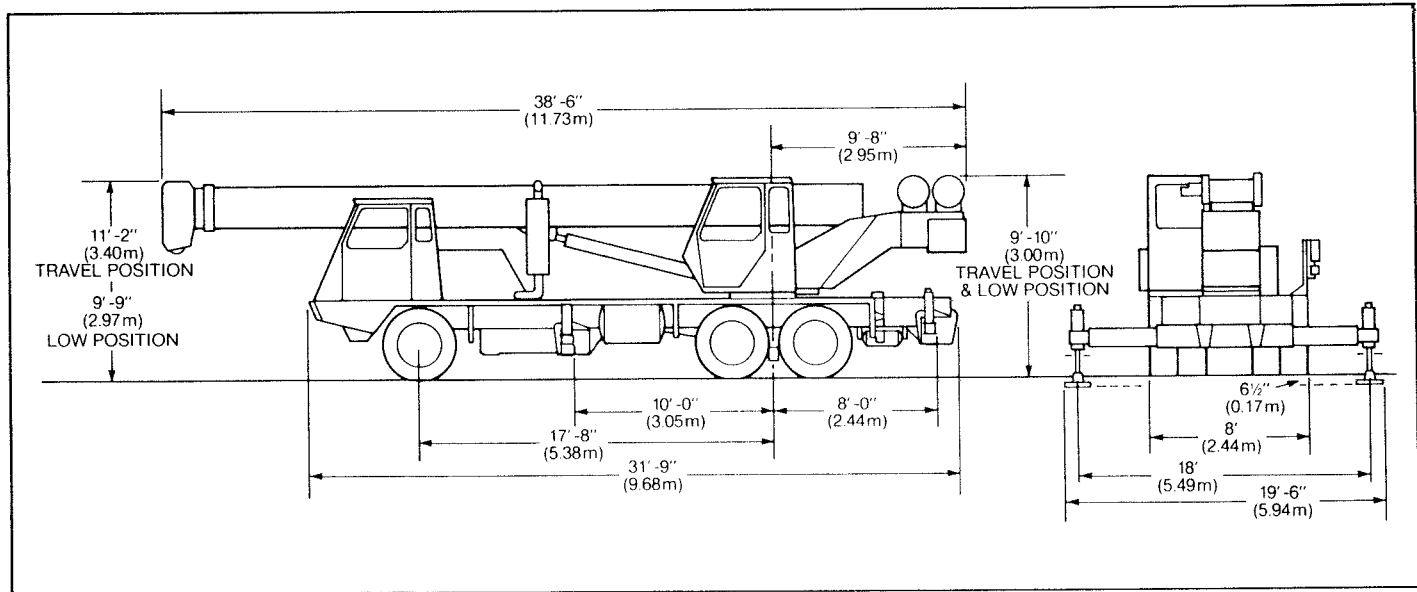
Hook & Ball 239 Lbs.
Hook Block (3 Sheave) 650 Lbs.
Hook Block (4 Sheave) 700 Lbs.

MAXIMUM PERMISSIBLE HOIST LINE LOAD

LINE PARTS	1	2	3	4	5	6	7	8
MAIN HOIST	9,700	19,400	29,100	38,800	48,500	58,200	67,900	70,000
AUX. HOIST	7,600	15,200	22,800	30,400	38,000	45,600	53,200	60,800
BOOM HEAD	2	2-0	2-3	1-2-0	1-2-3	1-2-3-0	1-2-3-4	1-2-3-4-0
HOOK BLOCK	0	2	2-0	1-2	1-2-0	1-2-3	1-2-3-0	1-2-3-4

MAIN & OPT. AUX. HOIST LINE
5/8" Dia. 6x19 or 6x37 IWRC, IPS, Reg Lay Performed Wire Rope
Minimum Breaking Strength - 17.9 Tons
Max. Permissible Line Pull - 10,228 Lbs

AUX. HOIST LINE
1/2" Dia. 6x19 or 6x37 IWRC, XIPS, Reg Lay Performed Wire Rope
Minimum Breaking Strength - 13.3 Tons
Max. Permissible Line Pull - 7,600 lbs

**GENERAL DIMENSIONS**

WEIGHTS & AXLE LOADS	GROSS WEIGHT (LBS.)	UPPER IN TRAVEL POSITION		GROSS WEIGHT (KG.)	UPPER IN TRAVEL POSITION	
		FRONT	REAR		FRONT	REAR
Basic Crane with 6CTAA-8.3L Engine, 81' (24.69 m) Boom, 1000 lb. (454 kg) Upper Counterweight, 16.5 x 22.5 Front Tires, 9.00 x 20 Rear with spoke wheels.	45,750	16,050	29,700	20 752	7,280	13,472
Add Options:						
33' (10.06 m) Swing-on Offsetable Boom Jib	+ 1,740	+ 1,475	+ 265	+ 789	+ 669	+ 120
33'-50' (10.06-15.24 m) Swing-on Offsetable Jib	+ 2,125	+ 1,600	+ 525	+ 964	+ 726	+ 238
Auxiliary Winch with Wire Rope	- 100*	- 15	- 85	- 45*	- 7	- 38
10.00 x 20 Tires (Rear Only) Highway Tread	+ 140	0	+ 140	+ 64	0	+ 64
16.50 x 22.5-18 PR Tires	+ 15	+ 15	0	+ 7	+ 7	0
5100 lb. (2313 kg) Counterweight on Cab Upper 1850 lb. (839 kg) Counterweight on Front Bumper	+ 5,950	+ 305	+ 5,645	+ 2 705	+ 140	+ 2,565
1800 lb. (816 kg) Counterweight on Cab Upper 1050 lb. (476 kg) Counterweight on Front Bumper	+ 1,850	+ 980	+ 870	+ 839	+ 445	+ 395
Automatic Transmission	+ 510	+ 300	+ 210	+ 231	+ 136	+ 95
6 x 6 Powertrain	+ 1,900	+ 1,950	- 50	+ 862	+ 885	- 23
Electric Remote Control Package	+ 200	+ 160	+ 40	+ 91	+ 73	+ 18
Heater/Defroster (Upper)	+ 50	0	+ 50	+ 23	0	+ 23
360° House Lock	+ 85	0	+ 85	+ 39	0	+ 39
35 ton (31.7 mt) Hook Block	+ 700	+1,015	- 315	+ 320	+ 460	- 140
6.25 ton (5.7 mt) Hook and Ball w/Latch	+ 240	+ 340	- 100	+ 109	+ 154	- 45

* Requires removing 1000 lb. (454 kg) counterweight.

NOTE: Weights are for Lorain supplied equipment and subject to 2% variation due to manufacturing tolerances.

WE RESERVE THE RIGHT TO AMEND THESE SPECIFICATIONS AT ANY TIME WITHOUT NOTICE. THE ONLY WARRANTY APPLICABLE IS OUR STANDARD WRITTEN WARRANTY APPLICABLE TO THE PARTICULAR PRODUCT AND SALE. WE MAKE NO OTHER WARRANTY, EXPRESSED OR IMPLIED.



Koehring Cranes & Excavators
Waverly, Iowa 50677