



218 HYLAB

HSL SERIES

110-ton (99.97 mt) Lattice Boom Crawler Crane

Heavy-duty power for the most demanding jobs

- Transport complete crane with base section, drums with rope and self assembly device, less counterweights at under 100,000 lbs (45 360 kg)
- Rated capacity limiter with full color graphic display
- Powerful winch package with wet brake design
- 7-piece counterweight system design with innovative counterweight removal system
- Superior capacities
- Optional attachments:
 - Angle boom
 - 5' auxiliary tip
 - Offsettable jib
 - Luffing attachment

Link-Belt
C R A N E S



Unit shown in luffing configuration



218 HYLAB HSL SERIES

110 ton (99.97 mt) Lattice Boom Crawler Crane

- Transport complete crane with base section, drums with rope and self-assembly device, less counterweights at under 100,000 lbs (45 360 kg)
- 7-piece counterweight system design with innovative removal system
- Latest rated capacity limiter with color graphics
- Cutting edge winch package with wet brake design
- Superior capacities

Heavy-duty power for the most demanding jobs

- Robust engine with **total horsepower control** provides unbeatable line speeds under load.
- **Multi-disk wet brakes** for smooth load control. Virtually no friction drag from planetary. Thousands of hours of duty cycle operation expected without maintenance or adjustment.
- **High travel torque**
- **Six pump** main hydraulic package provides smooth performance.
- **26 mm rope** on front and rear hoists with automatic pawl and grooved lagging.
- **Matched front & rear drum** performance with 44,565 lbs (20 214 kg) line pull.
- **True gravity freefall** for cycle-type work, pile driving.

Options include:

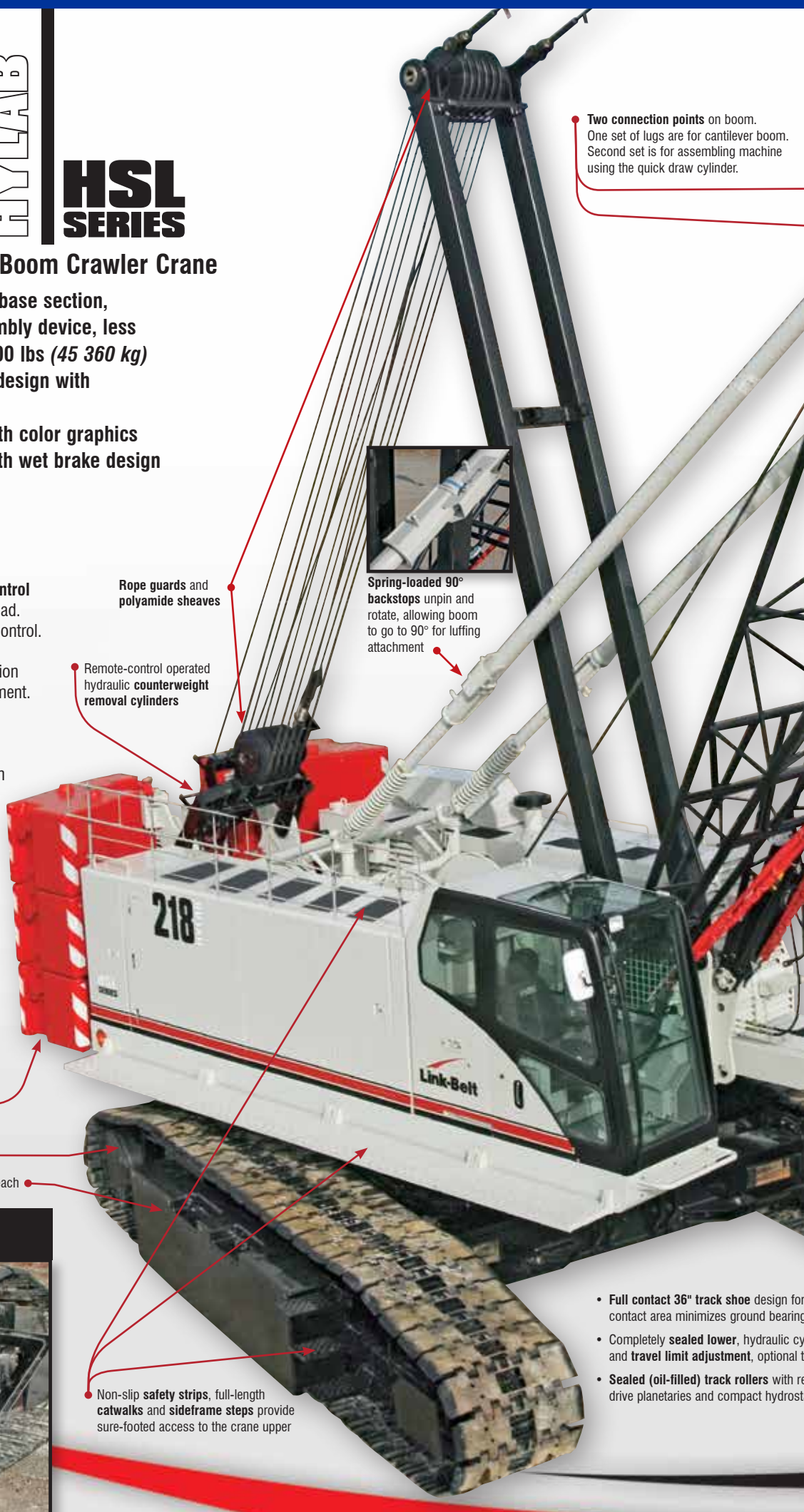
- **Third drum** features controlled free spooling capability for pile driving applications or power up/down as auxiliary hoist line for luffer application.
- **Rear mount fourth drum** — identical in to main and auxiliary winches.

Counterweight biscuit design allows for various configuration options and easy transport

Multi-speed travel

Sideframe counterweights - 11,000 lbs (4 990 kg) each

- Pin-on **track extender blocks** remove for transport
- 9' 9" (2.74 m) retracted gauge
- 14' 2" (4.32 m) extended gauge



Two connection points on boom. One set of lugs are for cantilever boom. Second set is for assembling machine using the quick draw cylinder.

Rope guards and polyamide sheaves

Remote-control operated hydraulic counterweight removal cylinders

Spring-loaded 90° backstops unpin and rotate, allowing boom to go to 90° for luffing attachment

Non-slip safety strips, full-length catwalks and sideframe steps provide sure-footed access to the crane upper

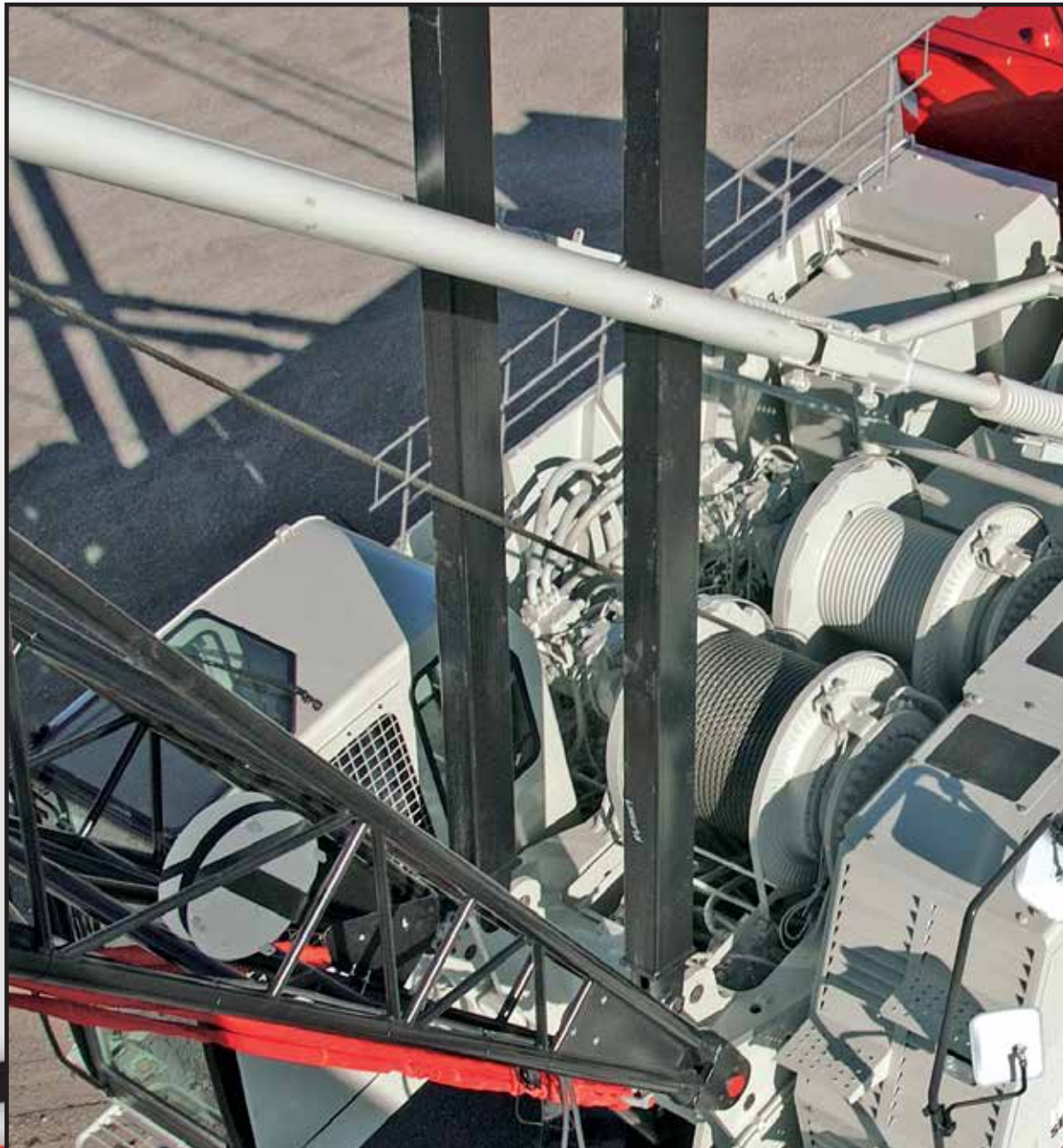
- Full contact 36" track shoe design for contact area minimizes ground bearing
- Completely sealed lower, hydraulic cylinder and travel limit adjustment, optional t
- Sealed (oil-filled) track rollers with re drive planetaries and compact hydrost



Optional "Quick Draw" self-erecting cylinder



Excellent access for all routine engine and hydraulic maintenance



maximum operating pressure
cylinder track tensioning
track tension system
replaceable wear bars,
automatic drives



Highly functional and comfortable cab

- Wide, uncluttered entry
- 18,000 BTU air-conditioning
- 19,000 BTU hot water heating
- Six-way adjustable seat
- Easy-to-read backlit gauges
- Adjustable armrest console with pilot-operated single-axis controls
- Hydraulic pilot controls for variable hoist, swing and travel performance
- Variable hydraulic output from main pumps controlled by variable hand throttle for infinite control
- Fingertip high speed hoist button for front and rear drum
- Low-effort hydraulic pedals with minimal range of motion can remain latched for power up/down operation
- Full function rated capacity limiter monitored by load sensing via boom hoist mounted load cell

Outstanding standard features

- **HSL capacity limiter** with high visibility color graphic display
- **Multi-disc wet brakes** offer automatic or free fall mode
- **Dual swing drives** provide smooth swing control
- **Full length removable catwalks** on both sides of the upper house

Luffer ready!

- Conventional boom extensions can be used as **luffing boom extensions**
- **3rd drum optional second hoist line**
- **Rear drum luffing jib hoist**
- **Fold-under** assembly





218 HSL attachments are versatile and strong

Heavy-duty tube boom

- 40' - 230' (12.2 - 70.1 m) heavy-duty tubular boom
- Heavy-duty boom tip
- Maximum tip height of tube boom + jib: 278.6' (84.92 m)
- Conventional boom is also luffing boom

Fixed jib

- 30' - 75' (9.14 - 22.86 m) fixed jib
- Offset angles at 5°, 15° and 25°

Heavy duty angle boom

- 45' - 155' (13.72 - 47.24 m)
- Designed for rough application and handling where job site and transportation conditions are less than ideal for tube boom

Auxiliary 5' tip extension

- Designed to use in place of jib to provide clearance between working hoist lines
- Maximum capacity is 18.5 tons (16.78 mt)

Luffing boom attachment

- Maximum luffing attachment: 140 ft + 140 ft (42.7 m + 42.7 m)
- 283 ft (86.26 m) maximum working height
- 208 ft (63.40 m) maximum working 360° radius
- Working angles of 90°, 85°, 80°, 75°, 70° and 65°
- Luffing cap and fan post assembly transports as one piece



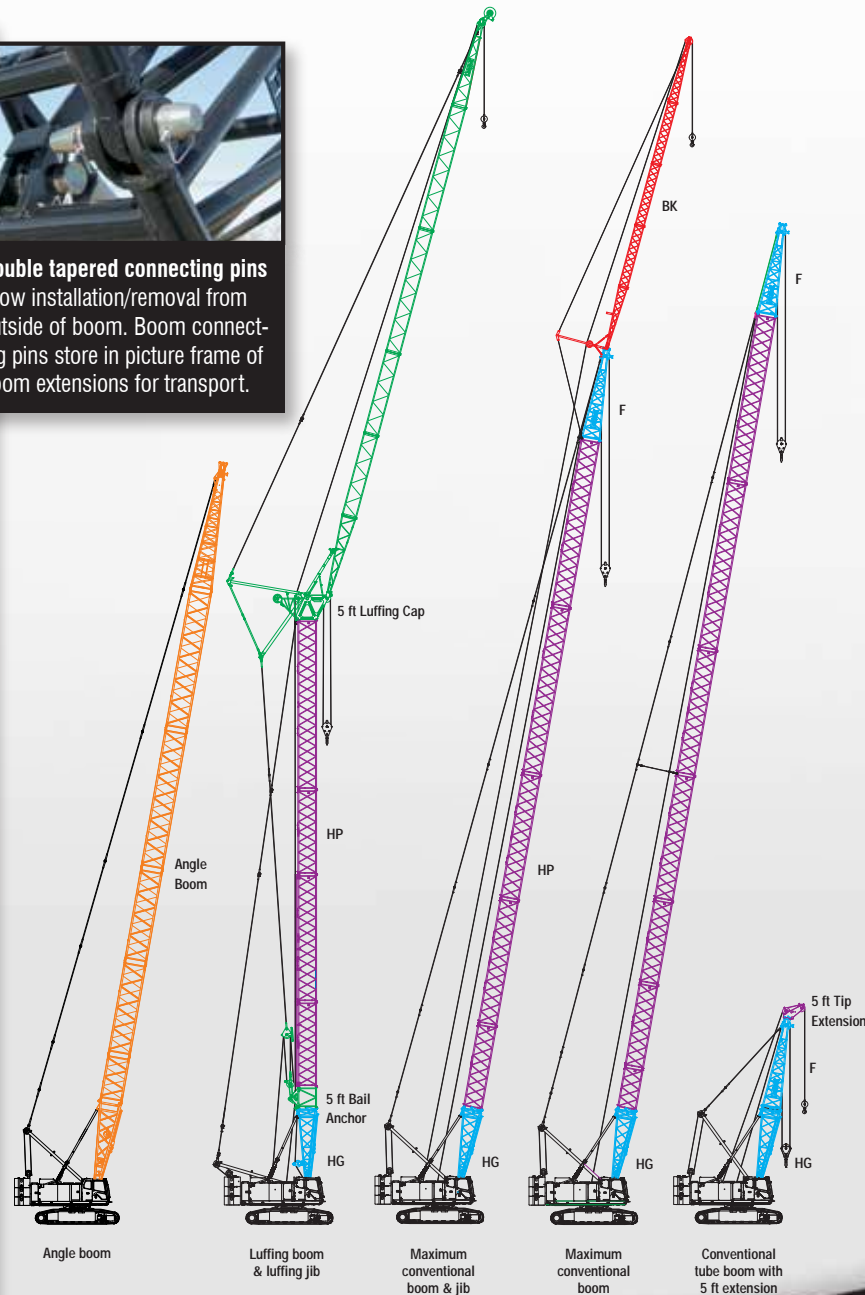
The boom top section features **heavy duty polyamide sheaves** and standard **pin-on points** for attachment of options such as a fixed jib, tip extension and adapters for universal pile driving leads. **Narrow head machinery** allows pendants to rest on top of boom extensions.

In-line boom suspension load cell, standard with anti-two block system for both front and rear drum.

Optional pile driving lead adapter, extended head shaft for hanging leads, three sheave idler to separate load lines



Double tapered connecting pins allow installation/removal from outside of boom. Boom connecting pins store in picture frame of boom extensions for transport.



Angle boom Luffing boom & luffing jib Maximum conventional boom & jib Maximum conventional boom Conventional tube boom with 5 ft extension



Counterweights lower completely to the ground

Transportability and assembly

- Transports with crawlers, rope and base — 99,960 lbs (45 341 kg)
- Transports in 4 loads total
- 7-piece counterweight system is designed for easy handling and blended load-outs
- Innovative counterweight removal system — hydraulic counterweight cylinders remain with counterweight to reduce base machine transport weight
- Counterweight removal control located at top of counterweight. Ladder included to access control station. Platform provides optimal viewing of counterweight assembly/disassembly
- Pendants can be stowed on boom extensions for transport
- Standard left and right catwalks easily remove for transport

Optional “Quick Draw”

Quick draw single hydraulic cylinder mounted in boom base section is used for self-assembly and disassembly — no need for a helper crane or special rigging block — includes lifting sling



Counterweight removal control station



Counterweight cylinders remain with counterweight for transport

Link-Belt

C R A N E S

Lexington, Kentucky www.linkbelt.com

© Link-Belt is a registered trademark. Copyright 2014. All rights reserved. We are constantly improving our products and therefore reserve the right to change designs and specifications.

Litho in U.S.A. 8/14 1335 #4453 (supersedes #4333)