

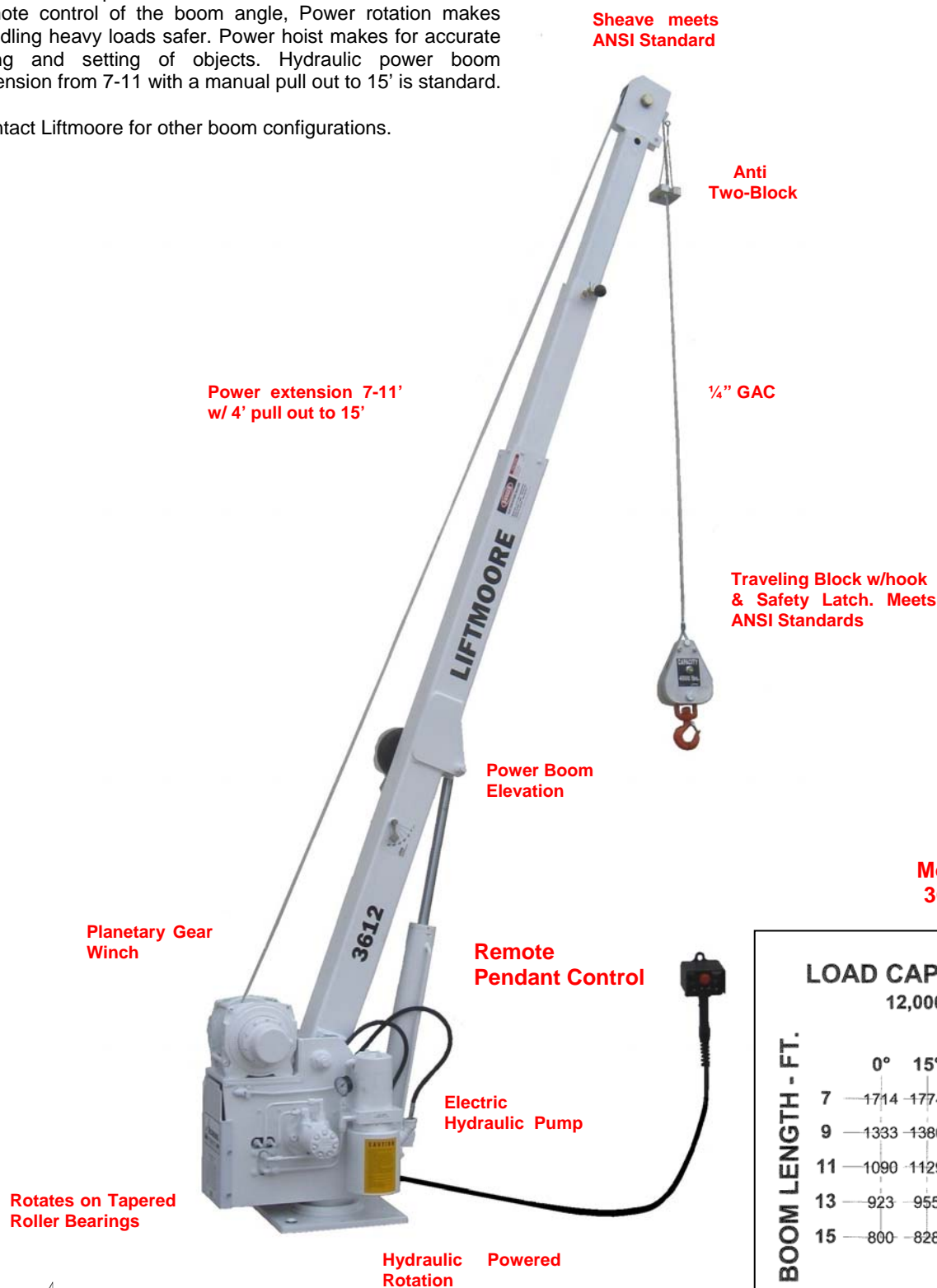


# LIFTMOORE 3612REE 7-15 CRANE

12,000 FT.-LB. MOMENT RATING  
3,600 LB. MAXIMUM CAPACITY

The Model 3612REE 7-15 is the latest model added to our product line. This unit comes standard with power features for maximum operation ease. Power boom elevation allows remote control of the boom angle, Power rotation makes handling heavy loads safer. Power hoist makes for accurate lifting and setting of objects. Hydraulic power boom extension from 7-11 with a manual pull out to 15' is standard.

Contact Liftmoore for other boom configurations.



Model  
3612

## LOAD CAPACITY - LBS. 12,000 FT-LBS

BOOM LENGTH - FT.	BOOM LENGTH - FT.					
	0°	15°	30°	45°	60°	75°
7	1714	1774	1979	2424	3428	3600
9	1333	1380	1539	1885	2666	3600
11	1090	1129	1259	1542	2181	3600
13	923	955	1065	1305	1846	3566
15	800	828	923	1131	1600	3090



HOUSTON, TEXAS  
FAX: (800) 824-5559 (USA & Canada)  
FAX: (713) 688-6324  
PHONE: (713) 688-5533  
[www.liftmoore.com](http://www.liftmoore.com)

  
713-688-5533  
[WWW.LIFTMOORE.COM](http://WWW.LIFTMOORE.COM)

24344

