



33 TON MOBILIFT

by
LIFT SYSTEMS, INC.



***Global Leaders in Specialized
Lifting Equipment!***



MOBILIFT

33 TON

STANDARD EQUIPMENT

ENGINE:

GM 3.0L, 4 cylinder, 75 hp (56 Kw) propane engine

PUMP:

Sundstrand 40 series drive pump

CONTROL SYSTEM:

CARL (Computer Assisted Remote Lifting) Control System. Monitors Boom Angle, Boom Extension, Pressure, Counterweight Load Pin. Automatic Shutdown for overload conditions. Large easy to read display screen with push button navigation and dial adjustment.

CONTROLS:

Separate controls for each function. Combination of foot pedal, joystick, and push button controls allows for multiple functions to be performed at the same time.

DRIVE:

Rockwell planetary drive axle. Full hydrostatic system with spring applied brakes.

WHEELS:

Front: qty. (4)

Diameter: 28"

Width: 12"

Rear: qty. (2)

Diameter: 28"

Width: 12"

Replaceable polyurethane composition

OSCILLATING REAR STEERING BOX:

Keeps all steering wheels in contact with ground.

GRADABILITY:

Unloaded maximum grade is 26%

Loaded maximum grade is 15%

18,000 lbs of draw bar pull unloaded

TRAVEL SPEED UNLOADED:

High Gear: 2.75 mph

Low Gear: 0.75 mph

TELESCOPING COUNTERWEIGHT:

Standard counterweight section telescopes 4' using a hydraulic cylinder. Push button control.

HYDRAULIC RESERVOIR:

90 gallons (340 liters)

BOOM:

High strength three section telescoping boom with powered first section and manually extended second section.

Replaceable wear pads on all sliding sections.

BOOM LIFT CYLINDER:

Single cylinder capable of lifting and lowering with a full load. Integral safety holding valve. Spherical bearing ensures constant alignment with the boom.

BOOM TELESCOPE CYLINDER:

Single cylinder capable of telescoping the boom in and out with a full load. Integral safety holding valve.

WINCH:

High performance hydraulic winch. Integral, full load brake. 400' of high capacity 5/8" wire rope standard.

BLOCK:

35 (31.5) ton block standard. Low profile with swivel hook.

POWER BOOM LIFTING EYE:

Qty. (1) located on boom with 33 ton capacity.

WEIGHT:

32,000 lbs base unit

Standard "A" counterweight included

COUNTERWEIGHTS:

"A" - non-removable counterweight installed in unit

Four (4) additional counterweight plates included with

fork lift loops standard. Weight of each plate is 5,500 lbs.

Total of additional counterweight is 22,000 lbs.

TIE DOWN / LIFTING EYES:

Tie down / lifting eyes installed for securing unit during transport and for lifting of the unit.

DRIVER PROTECTION GUARD:

Structural overhead guard for operator protection.

OTHER STANDARD FEATURES:

Back up alarm, horn, strobe light, operator seat complete with safety belt and electric switch.

OPTIONAL EQUIPMENT

RADIO REMOTE CONTROL:

Radio remote control allows full machine functionality from a wireless radio remote. Allows operator optimal view of load. Emergency safety shutdown switch is standard.

ANTI-TWO-BLOCK DEVICE:

Safety device installed to prevent hook block from contacting boom.

JIB EXTENSION:

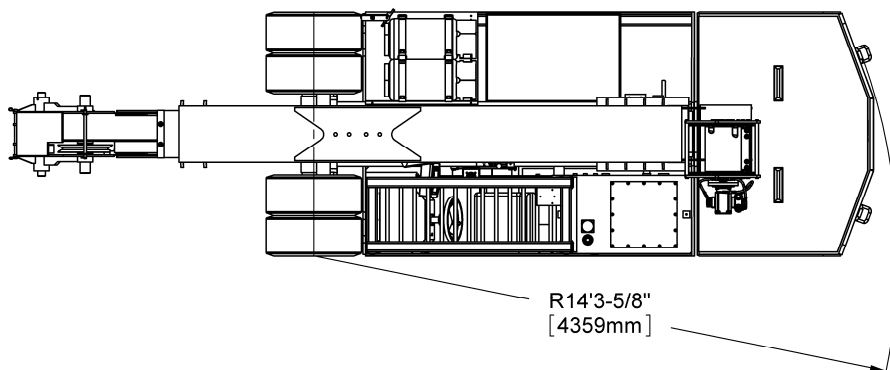
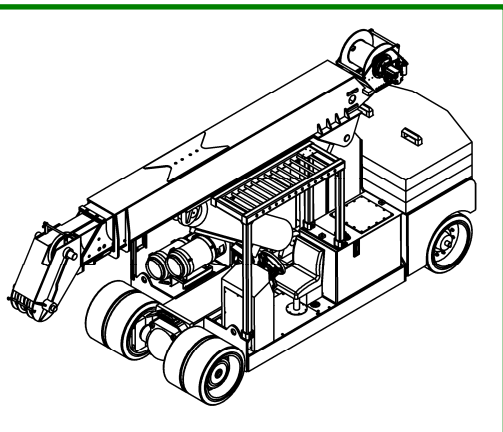
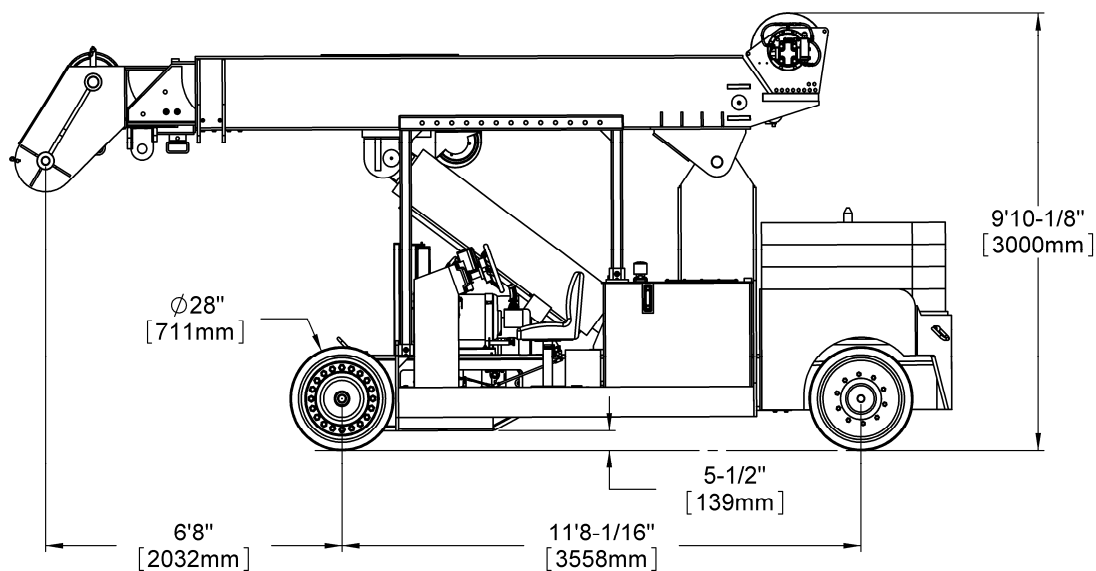
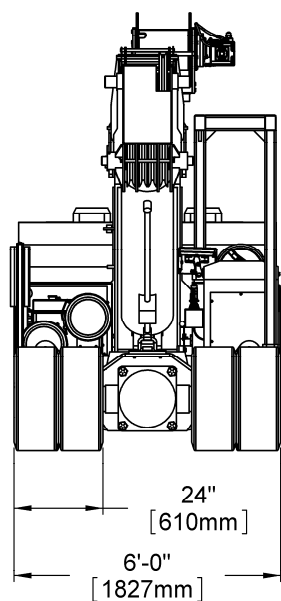
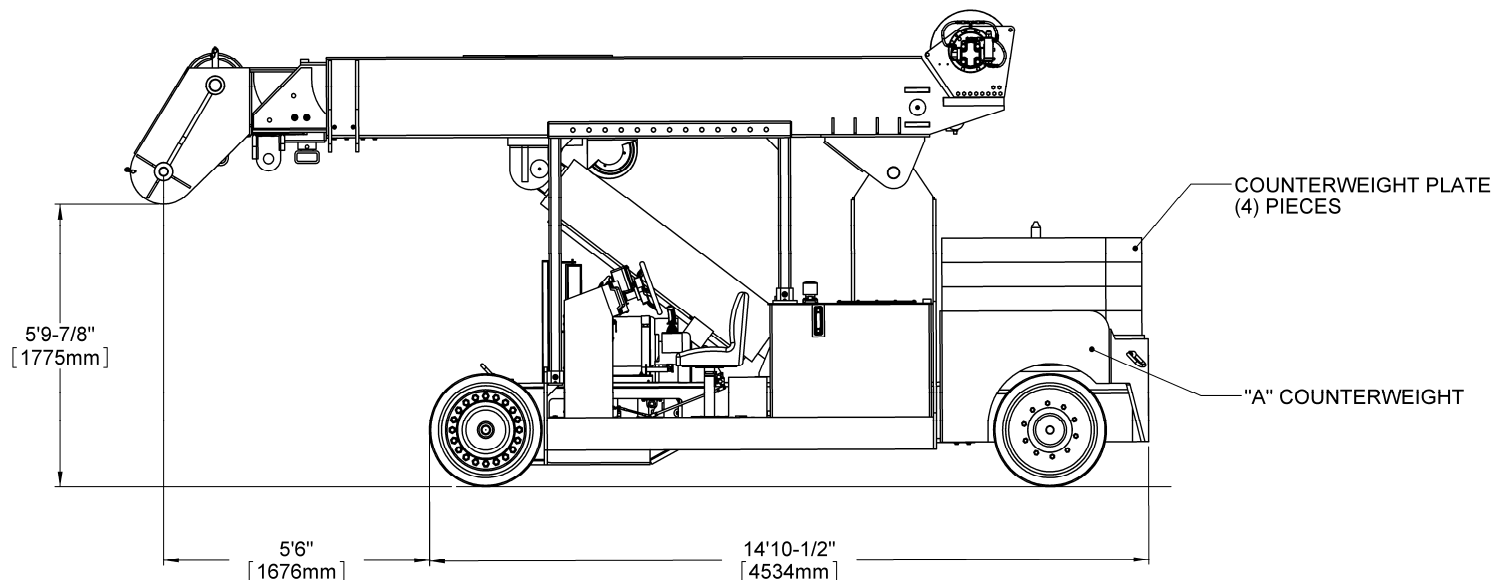
Consult factory for available capacities



MOBILIFT

33 TON

DIMENSIONAL DATA

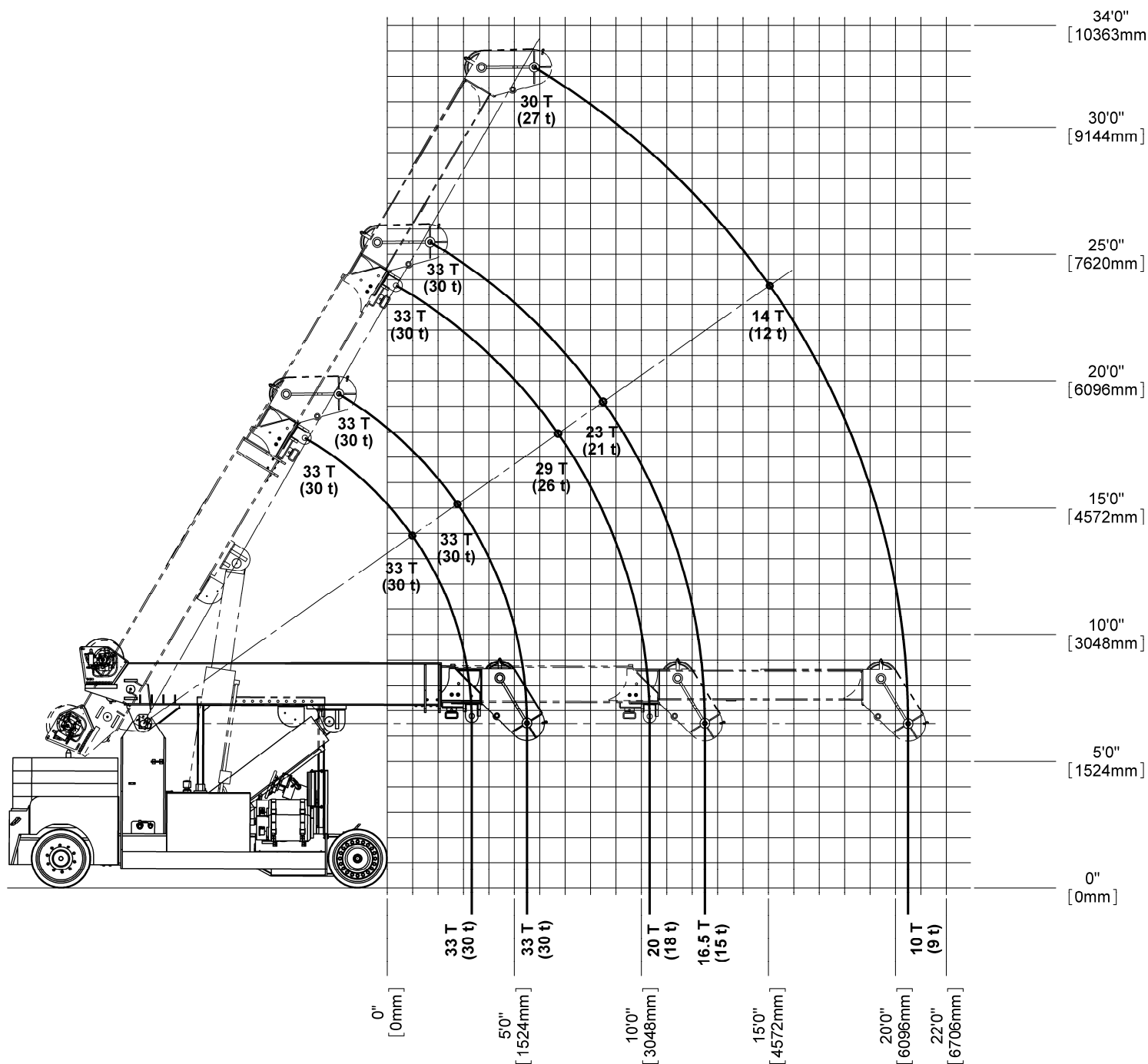




MOBILIFT

33 TON

REFERENCE CAPACITY / RANGE DIAGRAM



NOTE

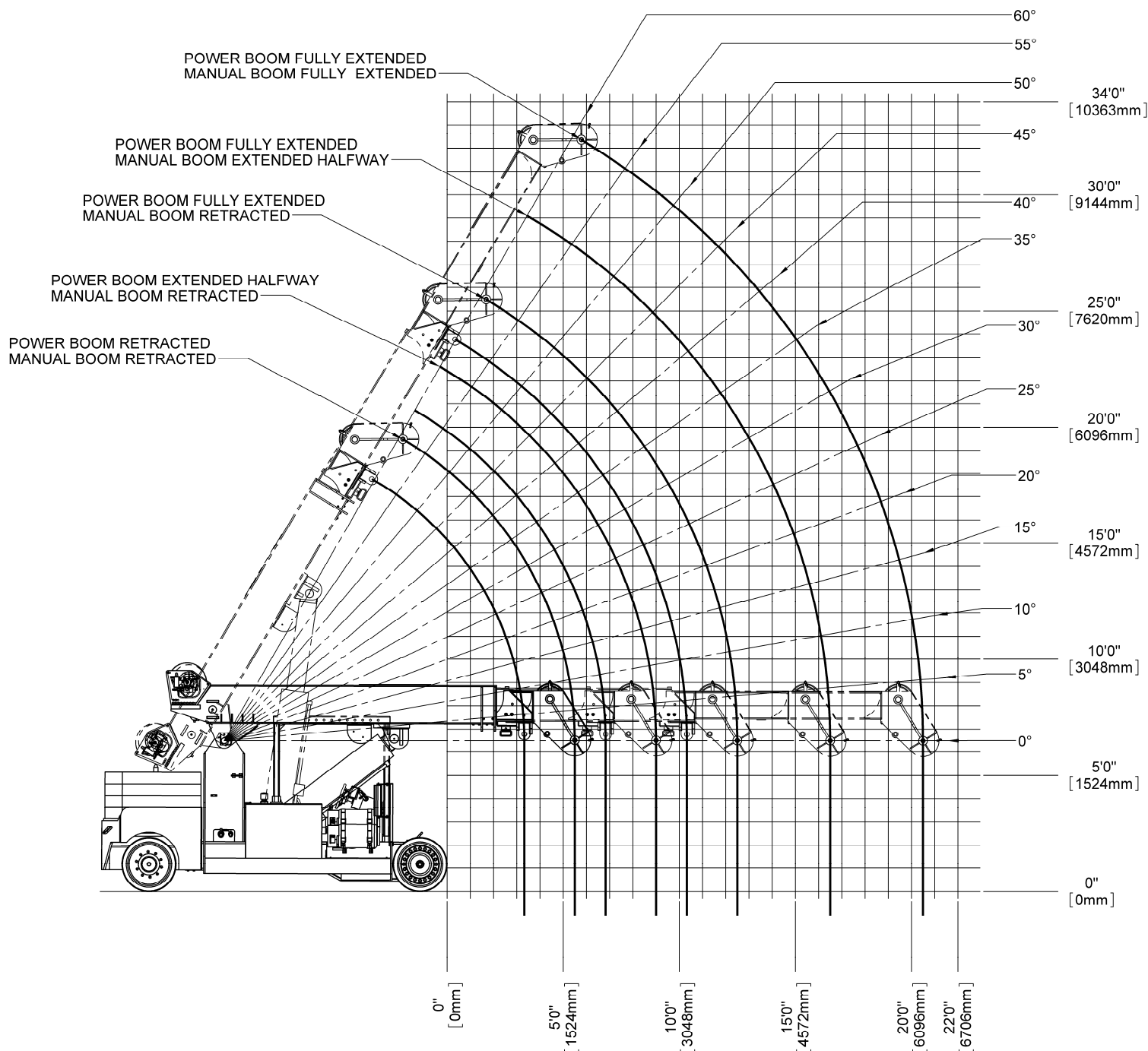
1. The above chart is for reference purposes only.
2. Never use the above chart for lift planning calculations
3. Lift plan calculations are to be determined solely by the load charts and range diagrams that are issued for the specific serial numbered machine that is to be used for the specific planned lift.



MOBILIFT

33 TON

RANGE DIAGRAM



NOTE

1. The above chart is for reference purposes only.
2. Never use the above chart for lift planning calculations
3. Lift plan calculations are to be determined solely by the load charts and range diagrams that are issued for the specific serial numbered machine that is to be used for the specific planned lift.



MOBILIFT

33 TON

LOAD CHARTS FOR BASE UNIT WITH NO COUNTERWEIGHT

LOAD RADIUS

(FEET FROM FRONT)

33 TON MOBILIFT LOAD CHART

FOR USE WITH HOOK BLOCK ONLY

STANDARD NON-REMOVABLE "A" COUNTERWEIGHT

MLLC229

2/17/2009

FULLY EXTENDED										FULLY RETRACTED									
BOOM LENGTH (FEET)										BOOM LENGTH (FEET)									
15		22		30		MANUAL FLY SECTION	SEE NOTES	15		22		30		MANUAL FLY SECTION	SEE NOTES				
50°								50°								50°			
0	50	66,139						50	66,139										
1	45	66,139						45	66,139										
2	39	66,139	58	66,139				39	56,000	58	54,800								
3	33	51,000	55	50,000				33	41,900	55	40,900								
4	25	40,600	52	39,700				25	33,300	52	32,400								
5	14	33,600	48	32,700				14	27,400	48	26,600								
5.5	0	31,000						0	25,300										
6	SEE NOTE (E)		45	27,700	59	28,800	SEE NOTE (E)			45	22,500	59	23,500	SEE NOTE (E)					
7			41	24,000	56	24,900				41	19,300	56	20,300						
8			37	21,000	54	21,900				37	16,900	54	17,800						
9			32	18,600	52	19,500				32	14,900	52	15,800						
10			27	16,700	49	17,500				27	13,300	49	14,100						
11			21	15,100	47	15,800				21	12,000	47	12,700						
12			18	13,700	44	14,400				12	10,800	44	11,600						
12.5			0	13,100						0	10,300								
13					41	13,200						41	10,600						
14					38	12,200						38	9,700						
15				35	11,300					35	8,900								
16				32	10,500					32	8,300								
17				28	9,700					28	7,700								
18				23	9,100					23	7,100								
19				18	8,500					18	6,600								
20				10	8,000					10	6,200								
20.5				0	7,800					0	6,000								

NOTES:

A) FLY SECTION CAPACITIES ARE LIMITED BY ANGLE. DO NOT USE LOAD RADIUS WHEN USING FLY SECTION.

B) RATINGS ABOVE THE BOLD LINE ARE BASED ON THE MACHINE'S HYDRAULIC OR STRUCTURAL STRENGTH AND NOT STABILITY.

C) RATINGS BELOW THE BOLD LINE ARE BASED ON 85% OF TIPPING.

D) ALL CAPACITIES ARE IN POUNDS.

E) TELESCOPE CYLINDER MUST BE FULLY RETRACTED AND AGAINST STOPS.

WARNING

FOR BOOM LENGTHS LESS THAN 30' WITH FLY SECTION EXTENDED, THE RATED LOADS ARE DETERMINED BY BOOM ANGLE ONLY. IN THE COLUMN HEADED BY 30' BOOM. FOR BOOM ANGLES NOT SHOWN USE RATINGS OF THE NEXT LOWER BOOM ANGLE.

CAUTION!

DO NOT EXTEND OR RETRACT COUNTERWEIGHT WITH ANY LOAD SUSPENDED ON HOOK OR FORKS.

LOAD CHARTS FOR BASE UNIT WITH 1 COUNTERWEIGHT SLAB

LOAD RADIUS (FEET FROM FRONT)	33 TON MOBILIFT LOAD CHART FOR USE WITH HOOK BLOCK ONLY STANDARD NON-REMOVABLE "A" COUNTERWEIGHT PLUS (1) COUNTERWEIGHT PLATE										MLLC230 2/17/2009		
	FULLY EXTENDED BOOM LENGTH (FEET)					FULLY RETRACTED BOOM LENGTH (FEET)							
	15°	15	22	30	MANUAL FLY SECTION	15°	15	22	30	MANUAL FLY SECTION			
0	50	66,139	LOADED BOOM ANGLE	15°		50	66,139	LOADED BOOM ANGLE	15°		MANUAL FLY SECTION		
1	45	66,139			SEE NOTES	45	66,139				SEE NOTES		
2	39	66,139	58	66,139		39	66,139	58	66,139				
3	33	66,139	55	66,139		33	54,500	55	53,400				
4	25	54,300	52	53,400	LOADED BOOM ANGLE	25	43,400	52	42,500	LOADED BOOM ANGLE	15°		
5	14	45,000	48	44,200		14	35,900	48	35,100				
5.5	0	41,700				0	33,200						
6	SEE NOTE (E)		45	37,600	59	38,600	SEE NOTE (E)		45	29,800	59	30,800	
7			41	32,600	56	33,600			41	25,700	56	26,700	
8			37	28,700	54	29,600			37	22,600	54	23,500	
9			32	25,600	52	26,400			32	20,100	52	20,900	
10			27	23,000	49	23,800			27	18,000	49	18,800	
11			21	20,900	47	21,700			21	16,300	47	17,000	
12			18	19,100	44	19,900			12	14,800	44	15,500	
12.5			0	18,300					0	14,200			
13					41	18,200					41	14,300	
14					38	16,800					38	13,100	
15	NOTES: A) FLY SECTION CAPACITIES ARE LIMITED BY ANGLE. DO NOT USE LOAD RADIUS WHEN USING FLY SECTION. B) RATINGS ABOVE THE BOLD LINE ARE BASED ON THE MACHINE'S HYDRAULIC OR STRUCTURAL STRENGTH AND NOT STABILITY. C) RATINGS BELOW THE BOLD LINE ARE BASED ON 85% OF TIPPING. D) ALL CAPACITIES ARE IN POUNDS. E) TELESCOPE CYLINDER MUST BE FULLY RETRACTED AND AGAINST STOPS.			35	15,600	WARNING FOR BOOM LENGTHS LESS THAN 30' WITH FLY SECTION EXTENDED, THE RATED LOADS ARE DETERMINED BY BOOM ANGLE ONLY. IN THE COLUMN HEADED BY 30' BOOM. FOR BOOM ANGLES NOT SHOWN USE RATINGS OF THE NEXT LOWER BOOM ANGLE. CAUTION! DO NOT EXTEND OR RETRACT COUNTERWEIGHT WITH ANY LOAD SUSPENDED ON HOOK OR FORKS.			35	12,200			
16				32	14,600				32	11,300			
17				28	13,600				28	10,500			
18				23	12,800				23	9,800			
19				18	12,000				18	9,200			
20				10	11,300				10	8,700			
20.5				0	11,000				0	8,400			

NOTE:

Specifications are provided in metric dimensions. All equipment dimensions, designs, specifications, calculations, etc., as described, are subject to change at manufacturer's discretion at any time and without notice. Weights are approximate and may vary. Data herein is for informational purposes only and will not be construed to guarantee suitability of equipment for any particular as performance may vary with conditions encountered. Warranty will apply as written in standard contract form upon purchase of equipment. Capacities are for reference only and must not be used for any serial numbered machine. Serial numbered load charts may be obtained from Lift Systems, Inc.

