



Telescopic Crawler Crane Grue télescopique sur chenilles

LTR 1220

Load charts - Ground slope

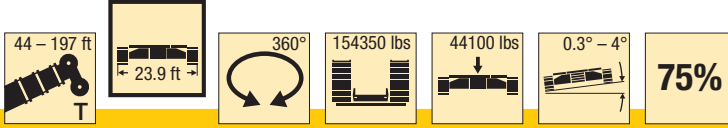
Tableaux des charges - Inclinaison du terrain



LIEBHERR



Lifting capacities Forces de levage

T

| ft | 44 ft | | | | | 58 ft | | | | | 72 ft | | | | | 86 ft | | | | | ft | |
|----|-------|-------|-------|-------|-------|-------|-------|-------|-------|------|-------|-------|-------|-------|------|-------|-------|-------|-------|------|----|----|
| | 0.3° | 0.7° | 1.5° | 2.5° | 4° | 0.3° | 0.7° | 1.5° | 2.5° | 4° | 0.3° | 0.7° | 1.5° | 2.5° | 4° | 0.3° | 0.7° | 1.5° | 2.5° | 4° | | |
| 10 | 295.4 | 295.4 | 295.4 | 261.7 | | 295.4 | 295 | 275.7 | | | 295.4 | | | | | | | | | | | 10 |
| 11 | 295.4 | 295.4 | 285.5 | 246 | 138.4 | 295.4 | 287.7 | 259.3 | | | 295.4 | 274 | | | | | | | | | | 11 |
| 12 | 294.1 | 287.2 | 268.5 | 232.8 | 138.2 | 295.2 | 270 | 243.6 | 209.8 | | 293.9 | 258.1 | | | | 240.9 | | | | | | 12 |
| 13 | 290.2 | 270.8 | 252.4 | 221.1 | 138 | 289.5 | 253.1 | 232 | 202.2 | | 288.3 | 241.8 | 218.1 | | | 261.8 | | | | | | 13 |
| 14 | 277.9 | 254.4 | 239.1 | 212.2 | 138 | 278.2 | 239.2 | 222.5 | 195.1 | | 276.9 | 229.7 | 209.8 | | | 263.7 | | | | | | 14 |
| 15 | 266.7 | 240.9 | 228.7 | 204.7 | 138 | 266.9 | 228.3 | 214.3 | 188.6 | | 263.5 | 219.2 | 202.2 | | | 259 | 210.9 | | | | | 15 |
| 16 | 256.1 | 229.7 | 219.8 | 197.7 | 138 | 255.8 | 219.3 | 206.8 | 182.5 | 97.6 | 249.8 | 210.4 | 195.2 | 169.4 | | 244.8 | 202.5 | | | | | 16 |
| 17 | 246.2 | 220.6 | 212 | 191.1 | 138 | 245.8 | 211.5 | 199.9 | 176.9 | 97.8 | 240.2 | 202.7 | 188.6 | 164.2 | | 235.6 | 195.1 | 178.7 | | | | 17 |
| 18 | 237 | 212.5 | 204.7 | 184.9 | 138 | 237.4 | 203.8 | 193.2 | 171.4 | 97.9 | 231.7 | 195.5 | 182.5 | 159.3 | | 226.3 | 188.1 | 172.9 | | | | 18 |
| 19 | 228.2 | 205.1 | 197.8 | 179.1 | 138 | 229.4 | 197 | 187.1 | 166.4 | 97.9 | 223.2 | 188.8 | 176.9 | 154.8 | | 217.7 | 181.5 | 167.4 | 141.8 | | | 19 |
| 20 | 219.7 | 198 | 191.3 | 173.6 | 138 | 221.2 | 190.2 | 181.1 | 161.5 | 97.9 | 215.2 | 182.6 | 171.2 | 150.3 | | 210 | 175.6 | 162.5 | 142.9 | | | 20 |
| 22 | 204.3 | 184.7 | 179.1 | 163 | 138 | 206 | 178.4 | 170.5 | 152.7 | 97.9 | 201.3 | 171.6 | 161.7 | 142.6 | 64 | 195.8 | 166.4 | 154.7 | 135.4 | | | 22 |
| 24 | 190.7 | 172.5 | 167.5 | 152.3 | 135.1 | 192.5 | 167.9 | 160.9 | 144.7 | 97.8 | 188.7 | 161.5 | 152.8 | 135.4 | 63.8 | 183.5 | 157.6 | 147.1 | 128.8 | | | 24 |
| 26 | 178.6 | 160.8 | 156.1 | 141.8 | 125.6 | 180.4 | 158.3 | 152.2 | 137.4 | 97.8 | 177.6 | 152.4 | 144.8 | 128.8 | 63.8 | 172.6 | 148.9 | 139.9 | 122.8 | 40.3 | | 26 |
| 28 | 167.7 | 149.3 | 144.8 | 131.4 | 115.8 | 169.5 | 149.6 | 144.3 | 130.6 | 97.8 | 167.6 | 144.3 | 137.5 | 122.8 | 63.8 | 163.1 | 141.4 | 133.2 | 117.4 | 40.4 | | 28 |
| 30 | 157 | 137.7 | 133.2 | 120.5 | 105.4 | 159.2 | 141.5 | 136.8 | 124.2 | 97.8 | 158.7 | 137 | 130.9 | 117.7 | 63.8 | 154.4 | 134.4 | 127 | 112.4 | 40.9 | | 30 |
| 32 | 143.3 | 125.1 | 120.5 | 108.2 | 93.5 | 150.1 | 134.1 | 129.9 | 117.9 | 97.8 | 150.5 | 130.3 | 124.9 | 113 | 63.8 | 146.4 | 127.9 | 121.3 | 107.7 | 41.6 | | 32 |
| 34 | 126.7 | 109.8 | 104.9 | 92.9 | 78.1 | 141.5 | 127 | 123 | 111.6 | 96.8 | 142 | 124.2 | 119.3 | 108.5 | 63.8 | 139.1 | 122 | 116 | 103.4 | 42.3 | | 34 |
| 36 | 99.3 | 84.2 | 78.1 | 66.4 | 50.9 | 133.3 | 120.1 | 116.3 | 106.3 | 93 | 133.9 | 118.5 | 114.1 | 104.5 | 63.8 | 132.7 | 116.7 | 111.3 | 99.4 | 42.2 | | 36 |
| 38 | | | | | | 125.9 | 113.3 | 109.7 | 100.3 | 87.3 | 126.5 | 113.1 | 109.1 | 100.4 | 63.8 | 125.8 | 111.7 | 106.8 | 95.7 | 42 | | 38 |
| 40 | | | | | | 118.8 | 106.6 | 103.1 | 94.1 | 81.5 | 119.5 | 108.1 | 104.5 | 96.2 | 63.8 | 118.9 | 107.1 | 102.6 | 92.1 | 41.8 | | 40 |
| 45 | | | | | | 101.7 | 89.5 | 85.8 | 76.6 | 65.4 | 104.2 | 96.4 | 93.2 | 85.9 | 63.8 | 103.5 | 96.8 | 93.1 | 84.1 | 41.7 | | 45 |
| 50 | | | | | | 68.8 | 57.8 | 53.1 | 44.2 | 32.4 | 90.8 | 87 | 84.1 | 76 | 62.8 | 93.3 | 87.8 | 84.8 | 76.7 | 41.7 | | 50 |
| 55 | | | | | | | | | | | 82.2 | 75.8 | 72.9 | 65.3 | 54.8 | 82.3 | 79.5 | 76.7 | 69.5 | 41.7 | | 55 |
| 60 | | | | | | | | | | | 72.1 | 62.3 | 59.1 | 51.9 | 43.3 | 73.4 | 71.4 | 69.1 | 62.4 | 41.7 | | 60 |
| 65 | | | | | | | | | | | | | | | | 65.9 | 64 | 61.5 | 55.2 | 41.7 | | 65 |
| 70 | | | | | | | | | | | | | | | | 59.7 | 55.5 | 53 | 46.9 | 37.5 | | 70 |
| 75 | | | | | | | | | | | | | | | | 52 | 44.4 | 41.6 | 37.2 | 29 | | 75 |

t_242_00100_00_001 / 00200_00_001 / 00300_00_001 / 00400_00_001 / 00500_00_001



Lifting capacities Forces de levage

T

| ft | 100 ft | | | | | 114 ft | | | | | 128 ft | | | | | 142 ft | | | | | ft | | |
|-----|--------|-------|-------|-------|------|--------|-------|-------|------|------|--------|-------|------|------|------|--------|------|------|------|------|----|----|-----|
| | 0.3° | 0.7° | 1.5° | 2.5° | 4° | 0.3° | 0.7° | 1.5° | 2.5° | 4° | 0.3° | 0.7° | 1.5° | 2.5° | 4° | 0.3° | 0.7° | 1.5° | 2.5° | 4° | | | |
| 16 | 216.9 | | | | | | | | | | | | | | | | | | | | | 16 | |
| 17 | 216.5 | | | | | | | | | | | | | | | | | | | | | | 17 |
| 18 | 215 | 181.9 | | | | | | | | | | | | | | | | | | | | | 18 |
| 19 | 212.1 | 177.9 | | | | 176 | | | | | | | | | | | | | | | | | 19 |
| 20 | 205.8 | 172.2 | | | | 175.4 | | | | | | | | | | | | | | | | | 20 |
| 22 | 191.7 | 161.5 | 148.2 | | | 174 | 155.8 | | | | 117.7 | | | | | | | | | | | | 22 |
| 24 | 179.3 | 152 | 140.3 | 121.2 | | 171.7 | 147.3 | | | | 124.8 | | | | | | | | | | | | 24 |
| 26 | 168.4 | 143.6 | 133.2 | 115.4 | | 167.1 | 139.1 | 127.4 | | | 120.8 | 112 | | | | 99.5 | | | | | | | 26 |
| 28 | 160.6 | 136.1 | 126.9 | 110.4 | | 158.2 | 131.7 | 121.2 | 94.3 | | 116.4 | 107.9 | | | | 98.7 | | | | | | | 28 |
| 30 | 153 | 129.4 | 120.9 | 105.7 | 27.3 | 149.6 | 125.1 | 115.5 | 94.2 | | 111.9 | 103.9 | 94.4 | | | 96.2 | 89.4 | | | | | | 30 |
| 32 | 145.4 | 123.4 | 115.8 | 101.5 | 28.7 | 141.8 | 119 | 110.6 | 94.2 | | 107.6 | 100.1 | 91.3 | 66.1 | | 93.4 | 87.1 | | | | | | 32 |
| 34 | 138.1 | 117.6 | 110.7 | 97.4 | 28.8 | 134.8 | 113.6 | 105.7 | 91.9 | | 103.4 | 96.3 | 88.3 | 66.1 | | 90.4 | 84.8 | 78 | | | | | 34 |
| 36 | 131.8 | 112.5 | 106.2 | 93.8 | 28.8 | 128.5 | 108.6 | 101.5 | 88.6 | 16.1 | 99.2 | 92.7 | 85.3 | 66.1 | | 87.4 | 82.5 | 76 | 48.4 | | | | 36 |
| 38 | 125.9 | 107.7 | 101.9 | 90.3 | 28.8 | 122.8 | 104.1 | 97.5 | 85.3 | 16.2 | 95.1 | 89.1 | 82.4 | 66.1 | | 84.9 | 80.2 | 73.9 | 48.4 | | | | 38 |
| 40 | 120.4 | 103.3 | 98 | 87 | 28.9 | 117.3 | 99.7 | 93.6 | 82.2 | 16.2 | 91.2 | 85.8 | 79.5 | 66.1 | 8.5 | 82.6 | 77.9 | 71.9 | 48.4 | | | | 40 |
| 45 | 105.5 | 93.6 | 89.2 | 79.7 | 29 | 104.2 | 90.3 | 85.3 | 75.4 | 16.1 | 82.7 | 78.2 | 72.9 | 65.1 | 9.3 | 76.8 | 72.2 | 66.9 | 48.3 | 3.5 | | | 45 |
| 50 | 92.3 | 85.2 | 81.7 | 73.4 | 29.4 | 90.8 | 82.2 | 78 | 69.4 | 16 | 75.1 | 71.4 | 66.9 | 62.3 | 10.1 | 70.9 | 67 | 62.4 | 48.3 | 3.7 | | | 50 |
| 55 | 81.3 | 77.8 | 74 | 67.6 | 30.4 | 80 | 75.1 | 71.1 | 64.2 | 16.3 | 68.7 | 65.6 | 62.2 | 58.8 | 10.2 | 65.5 | 62.1 | 58.2 | 48.3 | 3.9 | | | 55 |
| 60 | 72.4 | 69.6 | 66.6 | 62.1 | 31.3 | 71 | 67.5 | 63.8 | 59.5 | 16.5 | 63.4 | 61.2 | 58.9 | 56 | 10.1 | 60.6 | 57.7 | 54.4 | 48.1 | 4 | | | 60 |
| 65 | 64.9 | 62.7 | 60.3 | 56.8 | 32.5 | 63.5 | 60.7 | 57.7 | 54.3 | 16.9 | 59.7 | 57.8 | 55.8 | 53.3 | 10.1 | 56.1 | 53.7 | 50.8 | 46.8 | 4.3 | | | 65 |
| 70 | 58.6 | 56.8 | 55 | 51.6 | 34.5 | 57.2 | 54.9 | 52.4 | 49.6 | 17.4 | 56.6 | 54.9 | 52.8 | 49.9 | 10.1 | 52.2 | 50 | 47.5 | 44.3 | 4.6 | | | 70 |
| 75 | 53.2 | 51.8 | 50.4 | 46.3 | 36.9 | 51.7 | 49.8 | 47.8 | 46.1 | 18.3 | 53.5 | 51.2 | 48.7 | 45.8 | 10.4 | 48.5 | 46.6 | 44.4 | 41.8 | 5 | | | 75 |
| 80 | 48.5 | 47.4 | 45.7 | 41 | 34.3 | 47.2 | 46.4 | 45.4 | 44.2 | 19.7 | 48.8 | 46.8 | 44.7 | 42.4 | 10.7 | 45.3 | 43.6 | 41.7 | 39.4 | 5.5 | | | 80 |
| 85 | 44.4 | 41 | 40 | 35.9 | 27.6 | 45 | 44.4 | 43.5 | 41.2 | 21.8 | 44.6 | 43 | 41.2 | 39.2 | 11.2 | 42.2 | 40.7 | 38.9 | 36.5 | 5.8 | | | 85 |
| 90 | 39.4 | 33.4 | 30.8 | 26.1 | 19.4 | 42.4 | 41.4 | 40.4 | 36.9 | 23.9 | 40.9 | 39.6 | 38.1 | 36.4 | 11.9 | 39.2 | 37.6 | 35.8 | 33.9 | 6 | | | 90 |
| 95 | | | | | | 39.2 | 38.3 | 36.5 | 32.1 | 25.9 | 37.6 | 36.5 | 35.3 | 33.9 | 13.2 | 36 | 34.9 | 33.7 | 32.3 | 6.3 | | | 95 |
| 100 | | | | | | 36.3 | 32.5 | 30.4 | 26.6 | 21.8 | 34.7 | 33.8 | 32.8 | 31.4 | 14.7 | 33.9 | 32.9 | 31.7 | 30.7 | 6.7 | | | 100 |
| 105 | | | | | | 28.2 | 24.5 | 22.1 | 17.9 | 12.2 | 32.1 | 31.4 | 30.6 | 27.9 | 15.9 | 31.8 | 31.2 | 30.5 | 29.4 | 7.3 | | | 105 |
| 110 | | | | | | | | | | | 29.7 | 29.1 | 27.4 | 25.3 | 17.5 | 30.4 | 29.6 | 28.6 | 27.6 | 8 | | | 110 |
| 115 | | | | | | | | | | | 27.5 | 25.6 | 23.7 | 20.2 | 15.4 | 28.3 | 27.6 | 26.8 | 25.3 | 9.1 | | | 115 |
| 120 | | | | | | | | | | | 20.5 | 16.8 | 14.5 | 10.8 | 6.1 | 26.3 | 25.7 | 25.1 | 22.2 | 10.7 | | | 120 |
| 125 | | | | | | | | | | | | | | | | 24.5 | 23.4 | 21.8 | 19.6 | 13 | | | 125 |
| 130 | | | | | | | | | | | | | | | | 22.4 | 19.7 | 17.9 | 14.6 | 10.4 | | | 130 |
| 135 | | | | | | | | | | | | | | | | 12.6 | 9.4 | 7.5 | 4.7 | | | | 135 |

t_242_00100_00_001 / 00200_00_001 / 00300_00_001 / 00400_00_001 / 00500_00_001



Lifting capacities

Forces de levage

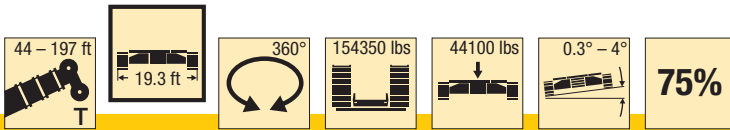
T

| ft | 156 ft | | | | | 171 ft | | | | | 185 ft | | | | 197 ft | | | | ft | |
|-----|--------|------|------|------|-----|--------|------|------|------|-----|--------|------|------|------|--------|------|------|------|----|-----|
| | 0.3° | 0.7° | 1.5° | 2.5° | 4° | 0.3° | 0.7° | 1.5° | 2.5° | 4° | 0.3° | 0.7° | 1.5° | 2.5° | 0.3° | 0.7° | 1.5° | 2.5° | | |
| 30 | 81 | | | | | | | | | | | | | | | | | | | 30 |
| 32 | 79.6 | | | | | | | | | | | | | | | | | | | 32 |
| 34 | 77.9 | 72.7 | | | | 64.6 | | | | | | | | | | | | | | 34 |
| 36 | 75.9 | 70.9 | | | | 63.8 | | | | | | | | | | | | | | 36 |
| 38 | 73.9 | 69.2 | 61.5 | | | 62.5 | 58.5 | | | | | | | | | | | | | 38 |
| 40 | 71.9 | 67.4 | 60.9 | 34.9 | | 61.2 | 57.3 | | | | 52.1 | | | | | | | | | 40 |
| 45 | 67.1 | 63.2 | 58.4 | 34.9 | | 57.7 | 54.2 | 47.1 | 25.6 | | 49.8 | 46.6 | 35.3 | | 41.8 | 38.9 | | | | 45 |
| 50 | 62.8 | 59.3 | 55 | 34.9 | | 54.3 | 51.2 | 46.5 | 25.6 | | 47.1 | 44.3 | 35.2 | 17.4 | 40 | 37.4 | 27.7 | | | 50 |
| 55 | 58.8 | 55.7 | 51.7 | 34.9 | | 51.1 | 48.3 | 45.1 | 25.6 | | 44.6 | 42 | 35 | 17.4 | 38 | 35.7 | 27.6 | 12.7 | | 55 |
| 60 | 54.9 | 52.1 | 48.7 | 34.9 | | 48.2 | 45.8 | 42.9 | 25.6 | | 42.2 | 39.9 | 34.7 | 17.4 | 36.1 | 34 | 27.5 | 12.7 | | 60 |
| 65 | 51.3 | 48.9 | 45.8 | 34.9 | | 45.6 | 43.5 | 40.8 | 25.6 | | 39.9 | 37.9 | 34.2 | 17.4 | 34.3 | 32.4 | 27.4 | 12.7 | | 65 |
| 70 | 48 | 45.9 | 43.2 | 34.9 | | 43.1 | 41.2 | 38.9 | 25.6 | | 37.9 | 36.1 | 33.1 | 17.4 | 32.6 | 30.9 | 27.4 | 12.7 | | 70 |
| 75 | 45.1 | 43.2 | 40.8 | 34.8 | | 40.9 | 39.2 | 37 | 25.6 | | 36 | 34.3 | 31.8 | 17.4 | 31 | 29.4 | 26.7 | 12.7 | | 75 |
| 80 | 42.4 | 40.6 | 38.9 | 34.6 | | 38.8 | 37.2 | 35.3 | 25.6 | | 34.2 | 32.6 | 30.5 | 17.4 | 29.5 | 28 | 25.9 | 12.7 | | 80 |
| 85 | 39.9 | 38.6 | 37 | 34.1 | | 36.9 | 35.4 | 33.6 | 25.6 | | 32.5 | 31.1 | 29.2 | 17.4 | 28 | 26.7 | 25 | 12.7 | | 85 |
| 90 | 37.9 | 36.6 | 35.1 | 33.1 | | 35.1 | 33.7 | 32 | 25.6 | | 30.9 | 29.6 | 28 | 17.4 | 26.7 | 25.5 | 24 | 12.7 | | 90 |
| 95 | 35.9 | 34.6 | 33.1 | 31.2 | | 33.3 | 32 | 30.5 | 25.6 | | 29.5 | 28.3 | 26.9 | 17.4 | 25.4 | 24.4 | 23 | 12.7 | | 95 |
| 100 | 33.8 | 32.4 | 30.8 | 29 | | 31.6 | 30.4 | 29 | 25.6 | | 28.1 | 27 | 25.7 | 17.4 | 24.3 | 23.3 | 22.1 | 12.7 | | 100 |
| 105 | 31.3 | 30 | 28.6 | 27 | | 29.9 | 28.8 | 27.6 | 25.6 | | 26.8 | 25.9 | 24.7 | 17.4 | 23.2 | 22.3 | 21.2 | 12.7 | | 105 |
| 110 | 28.9 | 27.8 | 26.6 | 25.2 | | 28.3 | 27.3 | 26.2 | 24.8 | | 25.7 | 24.8 | 23.7 | 17.4 | 22.2 | 21.3 | 20.3 | 12.7 | | 110 |
| 115 | 26.7 | 25.9 | 25.2 | 24.3 | 2.6 | 26.7 | 25.8 | 24.6 | 23.1 | | 24.5 | 23.7 | 22.7 | 17.4 | 21.2 | 20.4 | 19.5 | 12.7 | | 115 |
| 120 | 25.4 | 24.7 | 24 | 23 | 3.5 | 25 | 24 | 22.9 | 21.6 | | 23.5 | 22.8 | 21.8 | 17.4 | 20.3 | 19.6 | 18.7 | 12.7 | | 120 |
| 125 | 23.8 | 23.2 | 22.7 | 22.1 | 4.2 | 23.2 | 22.3 | 21.3 | 20.2 | | 22.5 | 21.7 | 20.6 | 17.4 | 19.4 | 18.8 | 18 | 12.7 | | 125 |
| 130 | 22.7 | 22.3 | 21.7 | 20.2 | 5 | 21.5 | 20.7 | 19.9 | 18.9 | | 21.1 | 20.2 | 19.1 | 17 | 18.6 | 18 | 17.3 | 12.7 | | 130 |
| 135 | 21.4 | 20.9 | 20.3 | 17.5 | 6.1 | 19.9 | 19.3 | 18.8 | 18 | | 19.6 | 18.7 | 17.8 | 15.6 | 17.8 | 17.3 | 16.6 | 12.7 | | 135 |
| 140 | 19.9 | 18.5 | 17 | 14.4 | 8.2 | 18.9 | 18.5 | 18.1 | 16.7 | | 18.1 | 17.4 | 16.6 | 14.2 | 17.1 | 16.6 | 16 | 12.7 | | 140 |
| 145 | 17.1 | 14.3 | 12.5 | 9.7 | 6.2 | 18 | 17.6 | 17.1 | 15.3 | | 16.8 | 16.1 | 15.5 | 12.8 | 16.5 | 15.9 | 15.3 | 11.9 | | 145 |
| 150 | | | | | | 16.8 | 16.5 | 15.6 | 13.1 | 2.6 | 15.5 | 15 | 14.4 | 11.5 | 15.7 | 15 | 14.3 | 10.7 | | 150 |
| 155 | | | | | | 15.7 | 14 | 12.5 | 10 | 4.5 | 14.4 | 13.9 | 13.4 | 10.4 | 14.6 | 14 | 13.3 | 9.5 | | 155 |
| 160 | | | | | | 12.2 | 9.6 | 8.2 | 6 | 3 | 13.3 | 13 | 12.6 | 9.3 | 13.5 | 13 | 12.4 | 8.4 | | 160 |
| 165 | | | | | | | | | | | 12.3 | 12 | 11.2 | 8.3 | 12.5 | 12 | 11.5 | 7.3 | | 165 |
| 170 | | | | | | | | | | | 11.4 | 9.6 | 8.3 | 6.4 | 11.5 | 11.1 | 10.8 | 6.4 | | 170 |
| 175 | | | | | | | | | | | 7.7 | 5.8 | 4.6 | 2.6 | 10.6 | 10.3 | 9.9 | 5.4 | | 175 |
| 180 | | | | | | | | | | | | | | | 9.8 | 9 | 7.9 | 4.6 | | 180 |
| 185 | | | | | | | | | | | | | | | 8.1 | 6.3 | 5.1 | 3.4 | | 185 |

t_242_00100_00_001 / 00200_00_001 / 00300_00_001 / 00400_00_001 / 00500_00_001



Lifting capacities Forces de levage

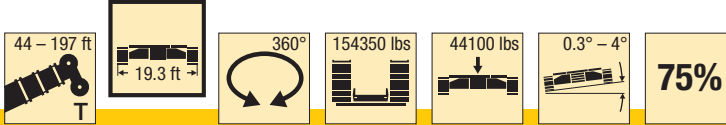
T

| ft | 44 ft | | | | | 58 ft | | | | | 72 ft | | | | | 86 ft | | | | | ft | |
|----|-------|-------|-------|-------|-------|-------|-------|-------|-------|------|-------|-------|-------|-------|------|-------|-------|-------|-------|------|----|----|
| | 0.3° | 0.7° | 1.5° | 2.5° | 4° | 0.3° | 0.7° | 1.5° | 2.5° | 4° | 0.3° | 0.7° | 1.5° | 2.5° | 4° | 0.3° | 0.7° | 1.5° | 2.5° | 4° | | |
| 10 | 295.4 | 295.4 | 295.4 | | | 295.4 | 295 | | | | 295.4 | | | | | | | | | | | 10 |
| 11 | 295.4 | 295.4 | 285.5 | 246 | | 295.4 | 287.7 | 259.3 | | | 295.4 | 274 | | | | | | | | | | 11 |
| 12 | 294.1 | 287.2 | 268.5 | 232.8 | | 295.2 | 270 | 243.6 | | | 293.9 | 258.1 | | | | 240.9 | | | | | | 12 |
| 13 | 290.2 | 270.8 | 252.4 | 221.1 | | 289.5 | 253.1 | 232 | 199.8 | | 288.3 | 241.8 | 218.1 | | | 261.8 | | | | | | 13 |
| 14 | 277.9 | 254.4 | 239.1 | 212.2 | | 278.2 | 239.2 | 222.5 | 193.8 | | 276.9 | 229.7 | 209.8 | | | 263.7 | | | | | | 14 |
| 15 | 266.7 | 240.9 | 228.7 | 204.7 | 138.7 | 266.9 | 228.3 | 214.3 | 188.6 | | 263.5 | 219.2 | 202.2 | | | 259 | 210.9 | | | | | 15 |
| 16 | 256.1 | 229.7 | 219.8 | 197.7 | 139.1 | 255.8 | 219.3 | 206.8 | 182.5 | 97.6 | 249.8 | 210.4 | 195.2 | 167.4 | | 244.8 | 202.5 | | | | | 16 |
| 17 | 246.2 | 220.6 | 212 | 191.1 | 139.5 | 245.8 | 211.5 | 199.9 | 176.9 | 97.8 | 240.2 | 202.7 | 188.6 | 164.2 | | 235.6 | 195.1 | 178.7 | | | | 17 |
| 18 | 237 | 212.5 | 204.7 | 184.9 | 139.9 | 237.4 | 203.8 | 193.2 | 171.4 | 97.9 | 231.7 | 195.5 | 182.5 | 159.3 | | 226.3 | 188.1 | 172.9 | | | | 18 |
| 19 | 228.2 | 205.1 | 197.8 | 179.1 | 140.4 | 229.4 | 197 | 187.1 | 166.4 | 97.9 | 223.2 | 188.8 | 176.9 | 154.8 | | 217.7 | 181.5 | 167.4 | 141.8 | | | 19 |
| 20 | 219.7 | 198 | 191.3 | 173.6 | 141.2 | 221.2 | 190.2 | 181.1 | 161.5 | 97.9 | 215.2 | 182.6 | 171.2 | 150.3 | | 210 | 175.6 | 162.5 | 142.9 | | | 20 |
| 22 | 204.3 | 184.7 | 179.1 | 163 | 142 | 206 | 178.4 | 170.5 | 152.7 | 97.9 | 201.3 | 171.6 | 161.7 | 142.6 | 64 | 195.8 | 166.4 | 154.7 | 135.4 | | | 22 |
| 24 | 190.7 | 172.5 | 167.5 | 152.3 | 135.1 | 192.5 | 167.9 | 160.9 | 144.7 | 97.8 | 188.7 | 161.5 | 152.8 | 135.4 | 63.8 | 183.5 | 157.6 | 147.1 | 128.8 | | | 24 |
| 26 | 178.6 | 160.8 | 156.1 | 141.8 | 125.6 | 180.4 | 158.3 | 152.2 | 137.4 | 97.8 | 177.6 | 152.4 | 144.8 | 128.8 | 63.8 | 172.6 | 148.9 | 139.9 | 122.8 | 40.3 | | 26 |
| 28 | 167.7 | 149.3 | 144.8 | 131.4 | 115.8 | 169.5 | 149.6 | 144.3 | 130.6 | 97.8 | 167.6 | 144.3 | 137.5 | 122.8 | 63.8 | 162.5 | 141.4 | 133.2 | 117.4 | 40.4 | | 28 |
| 30 | 156.8 | 137.7 | 133.2 | 120.5 | 105.4 | 159.1 | 141.5 | 136.8 | 124.2 | 97.8 | 158.7 | 137 | 130.9 | 117.7 | 63.8 | 151.4 | 134.4 | 127 | 112.4 | 40.9 | | 30 |
| 32 | 142.5 | 125.1 | 120.5 | 108.2 | 93.5 | 145.4 | 134.1 | 129.9 | 117.9 | 97.8 | 146.1 | 130.3 | 124.9 | 113 | 63.8 | 140.2 | 127.9 | 121.3 | 107.7 | 41.6 | | 32 |
| 34 | 126.7 | 109.8 | 104.9 | 92.9 | 78.1 | 132.6 | 127 | 123 | 111.6 | 96.8 | 133.6 | 124.2 | 119.3 | 108.5 | 63.8 | 130.4 | 122 | 116 | 103.4 | 42.3 | | 34 |
| 36 | 99.3 | 84.2 | 78.1 | 66.4 | 50.9 | 121.8 | 118.2 | 114.2 | 106.3 | 93 | 122.7 | 117.5 | 112.6 | 104.5 | 63.8 | 123.7 | 116.7 | 111.3 | 99.4 | 42.2 | | 36 |
| 38 | | | | | | 112.4 | 109.4 | 106.1 | 100.3 | 87.3 | 113.3 | 109.2 | 105.3 | 100.4 | 63.8 | 116 | 110.3 | 105.2 | 95.7 | 42 | | 38 |
| 40 | | | | | | 105.5 | 102.9 | 100 | 94.1 | 81.5 | 107 | 103.5 | 99.7 | 95.2 | 63.8 | 107.6 | 103.3 | 98.6 | 91.8 | 41.8 | | 40 |
| 45 | | | | | | 88.9 | 87.2 | 85.2 | 76.6 | 65.4 | 90.6 | 88.1 | 85.3 | 81.9 | 63.8 | 90.9 | 87.7 | 84.2 | 80.1 | 41.7 | | 45 |
| 50 | | | | | | 68.8 | 57.8 | 53.1 | 44.2 | 32.4 | 78 | 76.1 | 74 | 71.5 | 62.8 | 78.2 | 75.8 | 73.1 | 70 | 41.7 | | 50 |
| 55 | | | | | | | | | | | 68.1 | 66.7 | 65.2 | 63.3 | 54.8 | 68.2 | 66.4 | 64.3 | 61.8 | 41.7 | | 55 |
| 60 | | | | | | | | | | | 60.2 | 59.2 | 58.1 | 51.9 | 43.3 | 60.3 | 58.8 | 57.2 | 55.2 | 41.7 | | 60 |
| 65 | | | | | | | | | | | | | | | | 53.7 | 52.6 | 51.3 | 49.7 | 41.7 | | 65 |
| 70 | | | | | | | | | | | | | | | | 48.3 | 47.4 | 46.4 | 45.2 | 37.5 | | 70 |
| 75 | | | | | | | | | | | | | | | | 43.7 | 43 | 41.6 | 37.2 | 29 | | 75 |

t_242_00110_00_001 / 00210_00_001 / 00310_00_001 / 00410_00_001 / 00510_00_001



Lifting capacities Forces de levage

T

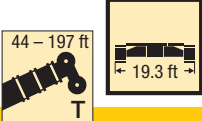


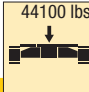
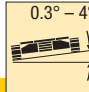
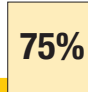
| ft | 100 ft | | | | | 114 ft | | | | | 128 ft | | | | | 142 ft | | | | | ft | | |
|-----|--------|-------|-------|-------|------|--------|-------|-------|------|------|--------|-------|------|------|------|--------|------|------|------|------|----|----|-----|
| | 0.3° | 0.7° | 1.5° | 2.5° | 4° | 0.3° | 0.7° | 1.5° | 2.5° | 4° | 0.3° | 0.7° | 1.5° | 2.5° | 4° | 0.3° | 0.7° | 1.5° | 2.5° | 4° | | | |
| 16 | 216.9 | | | | | | | | | | | | | | | | | | | | | 16 | |
| 17 | 216.5 | | | | | | | | | | | | | | | | | | | | | | 17 |
| 18 | 213.6 | 181.9 | | | | | | | | | | | | | | | | | | | | | 18 |
| 19 | 207.7 | 177.9 | | | | 176 | | | | | | | | | | | | | | | | | 19 |
| 20 | 200.8 | 172.2 | | | | 175.4 | | | | | | | | | | | | | | | | | 20 |
| 22 | 187 | 161.5 | 148.2 | | | 169.7 | 155.8 | | | | 117.7 | | | | | | | | | | | | 22 |
| 24 | 175.5 | 152 | 140.3 | 121.2 | | 160.4 | 147.3 | | | | 124.8 | | | | | | | | | | | | 24 |
| 26 | 168.2 | 143.6 | 133.2 | 115.4 | | 151.3 | 139.1 | 127.4 | | | 120.8 | 112 | | | | 99.5 | | | | | | | 26 |
| 28 | 158.7 | 136.1 | 126.9 | 110.4 | | 143 | 131.7 | 121.2 | 94.3 | | 116.4 | 107.9 | | | | 98.7 | | | | | | | 28 |
| 30 | 147 | 129.4 | 120.9 | 105.7 | 27.3 | 135.6 | 125.1 | 115.5 | 94.2 | | 111.9 | 103.9 | 94.4 | | | 96.2 | 89.4 | | | | | | 30 |
| 32 | 137 | 123.4 | 115.8 | 101.5 | 28.7 | 128.8 | 119 | 110.6 | 94.2 | | 107.6 | 100.1 | 91.3 | 66.1 | | 93.4 | 87.1 | | | | | | 32 |
| 34 | 127.6 | 117.6 | 110.7 | 97.4 | 28.8 | 120.8 | 113.5 | 105.7 | 91.9 | | 103.4 | 96.3 | 88.3 | 66.1 | | 90.4 | 84.8 | 78 | | | | | 34 |
| 36 | 119.8 | 112.5 | 106.2 | 93.8 | 28.8 | 113.3 | 107.6 | 101.2 | 88.6 | 16.1 | 99.2 | 92.7 | 85.3 | 66.1 | | 87.4 | 82.5 | 76 | 48.4 | | | | 36 |
| 38 | 112.5 | 107.2 | 101.4 | 90.3 | 28.8 | 106.7 | 101.5 | 95.9 | 85.3 | 16.2 | 95.1 | 89.1 | 82.4 | 66.1 | | 84.9 | 80.2 | 73.9 | 48.4 | | | | 38 |
| 40 | 106 | 101.3 | 96 | 87 | 28.9 | 100.5 | 95.8 | 90.8 | 82.2 | 16.2 | 91.2 | 85.8 | 79.5 | 66.1 | 8.5 | 82.6 | 77.9 | 71.9 | 48.4 | | | | 40 |
| 45 | 90.1 | 86.3 | 82.3 | 77.6 | 29 | 87.6 | 83.8 | 79.5 | 74.3 | 16.1 | 82.6 | 78.2 | 72.9 | 65.1 | 9.3 | 76.8 | 72.2 | 66.9 | 48.3 | 3.5 | | | 45 |
| 50 | 77.4 | 74.4 | 71.3 | 67.7 | 29.4 | 76 | 72.7 | 69.1 | 65 | 16 | 73.1 | 69.9 | 66.3 | 62 | 10.1 | 70.9 | 67 | 62.4 | 48.3 | 3.7 | | | 50 |
| 55 | 67.3 | 65.1 | 62.6 | 59.7 | 30.4 | 66.2 | 63.5 | 60.7 | 57.4 | 16.3 | 66.8 | 64.1 | 61.2 | 57.7 | 10.2 | 64.9 | 61.9 | 58.1 | 48.3 | 3.9 | | | 55 |
| 60 | 59.4 | 57.6 | 55.6 | 53.2 | 31.3 | 59.3 | 57.7 | 55.6 | 53.2 | 16.5 | 59.9 | 57.5 | 54.9 | 51.8 | 10.1 | 58.1 | 55.6 | 52.9 | 47.7 | 4 | | | 60 |
| 65 | 52.8 | 51.3 | 49.7 | 47.8 | 32.5 | 54.6 | 52.8 | 50.9 | 48.6 | 16.9 | 53.3 | 51.3 | 49.1 | 46.6 | 10.1 | 51.9 | 49.7 | 47.3 | 44.5 | 4.3 | | | 65 |
| 70 | 47.9 | 47 | 45.9 | 44.7 | 34.5 | 49.1 | 47.6 | 46 | 44.1 | 17.4 | 47.8 | 46.1 | 44.3 | 42.1 | 10.1 | 47.1 | 45.3 | 43.2 | 40.7 | 4.6 | | | 70 |
| 75 | 45.1 | 44.2 | 43.1 | 41.8 | 36.6 | 44.3 | 43.1 | 41.8 | 40.2 | 18.3 | 43 | 41.6 | 40.1 | 38.3 | 10.4 | 42.9 | 41.5 | 39.8 | 37.9 | 5 | | | 75 |
| 80 | 41.2 | 40.4 | 39.5 | 38.4 | 34.3 | 40.3 | 39.3 | 38.2 | 36.8 | 19.7 | 39.1 | 37.9 | 36.5 | 34.9 | 10.7 | 39.8 | 38.4 | 36.9 | 35.1 | 5.5 | | | 80 |
| 85 | 37.8 | 37.1 | 36.4 | 35.3 | 27.6 | 36.8 | 36 | 35 | 33.9 | 21.8 | 35.9 | 34.9 | 33.9 | 32.6 | 11.2 | 36.3 | 35.1 | 33.8 | 32.2 | 5.8 | | | 85 |
| 90 | 34.8 | 33.3 | 30.8 | 26.1 | 19.4 | 33.8 | 33.1 | 32.3 | 31.3 | 23.9 | 33.9 | 33.1 | 32.3 | 31.2 | 11.9 | 33.2 | 32.2 | 31 | 29.7 | 6 | | | 90 |
| 95 | | | | | | 31.1 | 30.5 | 29.8 | 29 | 25.9 | 31.7 | 31 | 30.1 | 29.1 | 13.2 | 30.4 | 29.6 | 28.6 | 27.4 | 6.3 | | | 95 |
| 100 | | | | | | 28.8 | 28.3 | 27.7 | 26.6 | 21.8 | 29.3 | 28.7 | 28 | 27.1 | 14.7 | 28.2 | 27.5 | 26.6 | 25.5 | 6.7 | | | 100 |
| 105 | | | | | | 26.7 | 24.5 | 22.1 | 17.9 | 12.2 | 27.2 | 26.6 | 26 | 25.2 | 15.9 | 26.2 | 25.5 | 24.8 | 23.9 | 7.3 | | | 105 |
| 110 | | | | | | | | | | | 25.2 | 24.8 | 24.3 | 23.6 | 17.5 | 24.7 | 24.2 | 23.6 | 23 | 8 | | | 110 |
| 115 | | | | | | | | | | | 23.5 | 23.1 | 22.7 | 20.2 | 15.4 | 23.3 | 22.8 | 22.2 | 21.5 | 9.1 | | | 115 |
| 120 | | | | | | | | | | | 20.5 | 16.8 | 14.5 | 10.8 | 6.1 | 21.7 | 21.3 | 20.8 | 20.2 | 10.7 | | | 120 |
| 125 | | | | | | | | | | | | | | | | 20.3 | 19.9 | 19.5 | 18.9 | 13 | | | 125 |
| 130 | | | | | | | | | | | | | | | | 19 | 18.6 | 17.8 | 14.6 | 10.4 | | | 130 |
| 135 | | | | | | | | | | | | | | | | 12.6 | 9.4 | 7.5 | 4.7 | | | | 135 |

t_242_00110_00_001 / 00210_00_001 / 00310_00_001 / 00410_00_001 / 00510_00_001



Lifting capacities

Forces de levage

T







| ft | 156 ft | | | | | 171 ft | | | | | 185 ft | | | | 197 ft | | | | ft | |
|-----|--------|------|------|------|-----|--------|------|------|------|-----|--------|------|------|------|--------|------|------|------|----|-----|
| | 0.3° | 0.7° | 1.5° | 2.5° | 4° | 0.3° | 0.7° | 1.5° | 2.5° | 4° | 0.3° | 0.7° | 1.5° | 2.5° | 0.3° | 0.7° | 1.5° | 2.5° | | |
| 30 | 81 | | | | | | | | | | | | | | | | | | | 30 |
| 32 | 79.6 | | | | | | | | | | | | | | | | | | | 32 |
| 34 | 77.9 | 72.7 | | | | 64.6 | | | | | | | | | | | | | | 34 |
| 36 | 75.9 | 70.9 | | | | 63.8 | | | | | | | | | | | | | | 36 |
| 38 | 73.9 | 69.2 | 61.5 | | | 62.5 | 58.5 | | | | | | | | | | | | | 38 |
| 40 | 71.9 | 67.4 | 60.9 | 34.9 | | 61.2 | 57.3 | | | | 52.1 | | | | | | | | | 40 |
| 45 | 67.1 | 63.2 | 58.4 | 34.9 | | 57.7 | 54.2 | 47.1 | 25.6 | | 49.8 | 46.6 | 35.3 | | 41.8 | 38.9 | | | | 45 |
| 50 | 62.8 | 59.3 | 55 | 34.9 | | 54.3 | 51.2 | 46.5 | 25.6 | | 47.1 | 44.3 | 35.2 | 17.4 | 40 | 37.4 | 27.7 | | | 50 |
| 55 | 58.8 | 55.7 | 51.7 | 34.9 | | 51.1 | 48.3 | 45.1 | 25.6 | | 44.6 | 42 | 35 | 17.4 | 38 | 35.7 | 27.6 | 12.7 | | 55 |
| 60 | 54.9 | 52.1 | 48.7 | 34.9 | | 48.2 | 45.8 | 42.9 | 25.6 | | 42.2 | 39.9 | 34.7 | 17.4 | 36.1 | 34 | 27.5 | 12.7 | | 60 |
| 65 | 51 | 48.7 | 45.8 | 34.9 | | 45.6 | 43.5 | 40.8 | 25.6 | | 39.9 | 37.9 | 34.2 | 17.4 | 34.3 | 32.4 | 27.4 | 12.7 | | 65 |
| 70 | 46.5 | 44.8 | 42.7 | 34.9 | | 43.1 | 41.2 | 38.9 | 25.6 | | 37.9 | 36.1 | 33.1 | 17.4 | 32.6 | 30.9 | 27.4 | 12.7 | | 70 |
| 75 | 42.4 | 40.7 | 38.8 | 34.6 | | 40.9 | 39.2 | 37 | 25.6 | | 36 | 34.3 | 31.8 | 17.4 | 31 | 29.4 | 26.7 | 12.7 | | 75 |
| 80 | 38.4 | 36.9 | 35.3 | 33.3 | | 38.1 | 36.5 | 34.6 | 25.6 | | 34.2 | 32.6 | 30.5 | 17.4 | 29.5 | 28 | 25.9 | 12.7 | | 80 |
| 85 | 35.6 | 34.3 | 32.8 | 31 | | 34.8 | 33.4 | 31.9 | 25.6 | | 32.5 | 31.1 | 29.2 | 17.4 | 28 | 26.7 | 25 | 12.7 | | 85 |
| 90 | 32.7 | 31.5 | 30.3 | 28.8 | | 32.2 | 30.9 | 29.5 | 25.6 | | 30.9 | 29.6 | 28 | 17.4 | 26.7 | 25.5 | 24 | 12.7 | | 90 |
| 95 | 30.4 | 29.5 | 28.4 | 27 | | 29.4 | 28.3 | 27.1 | 25.1 | | 29.1 | 27.9 | 26.6 | 17.4 | 25.4 | 24.4 | 23 | 12.7 | | 95 |
| 100 | 28.2 | 27.3 | 26.3 | 25.1 | | 27.4 | 26.4 | 25.3 | 23.8 | | 26.7 | 25.6 | 24.4 | 17.4 | 24.3 | 23.3 | 22.1 | 12.7 | | 100 |
| 105 | 26 | 25.2 | 24.4 | 23.3 | | 25.6 | 24.7 | 23.7 | 22.5 | | 24.5 | 23.5 | 22.4 | 17.4 | 23.2 | 22.3 | 21.2 | 12.7 | | 105 |
| 110 | 24.1 | 23.4 | 22.6 | 21.7 | | 23.6 | 22.8 | 22 | 20.8 | | 22.5 | 21.6 | 20.6 | 17.4 | 22.2 | 21.3 | 20.3 | 12.7 | | 110 |
| 115 | 22.3 | 21.7 | 21 | 20.1 | 2.6 | 21.8 | 21.1 | 20.3 | 19.3 | | 20.6 | 19.8 | 18.9 | 17.3 | 20.8 | 19.9 | 19 | 12.7 | | 115 |
| 120 | 20.7 | 20.2 | 19.6 | 18.8 | 3.5 | 20.1 | 19.5 | 18.7 | 17.8 | | 18.9 | 18.1 | 17.3 | 16.3 | 19.1 | 18.3 | 17.4 | 12.7 | | 120 |
| 125 | 19.4 | 18.9 | 18.3 | 17.6 | 4.2 | 18.6 | 18 | 17.3 | 16.5 | | 17.3 | 16.7 | 15.9 | 15 | 17.6 | 16.8 | 16 | 12.7 | | 125 |
| 130 | 18 | 17.6 | 17.1 | 16.4 | 5 | 17.1 | 16.6 | 16 | 15.3 | | 15.9 | 15.3 | 14.6 | 13.8 | 16.1 | 15.5 | 14.7 | 12.7 | | 130 |
| 135 | 16.7 | 16.3 | 15.9 | 15.3 | 6.1 | 15.8 | 15.3 | 14.8 | 14.1 | | 14.6 | 14 | 13.4 | 12.7 | 14.8 | 14.2 | 13.5 | 12.4 | | 135 |
| 140 | 15.5 | 15.2 | 14.8 | 14.1 | 8.2 | 14.6 | 14.2 | 13.7 | 13.1 | | 13.4 | 12.9 | 12.3 | 11.6 | 13.6 | 13 | 12.4 | 11.7 | | 140 |
| 145 | 14.4 | 14.2 | 12.5 | 9.7 | 6.2 | 13.5 | 13.1 | 12.7 | 12.2 | | 12.3 | 11.8 | 11.3 | 10.7 | 12.5 | 11.9 | 11.4 | 10.7 | | 145 |
| 150 | | | | | | 12.5 | 12.1 | 11.8 | 11.3 | 2.6 | 11.2 | 10.8 | 10.4 | 9.8 | 11.4 | 10.9 | 10.4 | 9.8 | | 150 |
| 155 | | | | | | 11.5 | 11.3 | 10.9 | 10 | 4.5 | 10.2 | 9.9 | 9.5 | 9 | 10.4 | 10 | 9.5 | 9 | | 155 |
| 160 | | | | | | 10.7 | 9.6 | 8.2 | 6 | 3 | 9.4 | 9 | 8.7 | 8.2 | 9.5 | 9.1 | 8.7 | 8.2 | | 160 |
| 165 | | | | | | | | | | | 8.5 | 8.3 | 7.9 | 7.6 | 8.7 | 8.3 | 7.9 | 7.3 | | 165 |
| 170 | | | | | | | | | | | 7.8 | 7.6 | 7.3 | 6.4 | 7.9 | 7.6 | 7.2 | 6.4 | | 170 |
| 175 | | | | | | | | | | | 7.1 | 5.8 | 4.6 | 2.6 | 7.1 | 6.9 | 6.6 | 5.4 | | 175 |
| 180 | | | | | | | | | | | | | | | 6.4 | 6.2 | 5.9 | 4.6 | | 180 |
| 185 | | | | | | | | | | | | | | | 5.8 | 5.6 | 5.1 | 3.4 | | 185 |

t_242_00110_00_001 / 00210_00_001 / 00310_00_001 / 00410_00_001 / 00510_00_001



Lifting capacities Forces de levage

THK

| ft | 44 ft | | | | | 58 ft | | | | | 72 ft | | | | | 86 ft | | | | | ft | | |
|----|-------|------|------|------|------|-------|------|------|------|------|-------|------|------|------|------|-------|------|------|------|------|----|----|----|
| | 0.3° | 0.7° | 1.5° | 2.5° | 4° | 0.3° | 0.7° | 1.5° | 2.5° | 4° | 0.3° | 0.7° | 1.5° | 2.5° | 4° | 0.3° | 0.7° | 1.5° | 2.5° | 4° | | | |
| 10 | 90.9 | 85.3 | | | | 90.9 | | | | | | | | | | | | | | | | 10 | |
| 11 | 90.9 | 85.3 | | | | 90.9 | | | | | | | | | | | | | | | | | 11 |
| 12 | 90.9 | 85.3 | 85.3 | | | 90.9 | | | | | | | | | | | | | | | | | 12 |
| 13 | 90.9 | 85.3 | 85.3 | 80.6 | | 90.9 | 85.3 | | | | | | | | | | | | | | | | 13 |
| 14 | 90.9 | 85.3 | 85.3 | 80.6 | | 90.9 | 85.3 | | | | 90.9 | | | | | | | | | | | | 14 |
| 15 | 90.9 | 85.3 | 85.3 | 80.6 | | 90.9 | 85.3 | 85.3 | | | 90.9 | | | | | | | | | | | | 15 |
| 16 | 90.9 | 85.3 | 85.3 | 80.6 | | 90.9 | 85.3 | 85.3 | | | 90.9 | 85.3 | | | | 90.9 | | | | | | | 16 |
| 17 | 90.9 | 85.3 | 85.3 | 80.6 | | 90.9 | 85.3 | 85.3 | 80.6 | | 90.9 | 85.3 | | | | 90.9 | | | | | | | 17 |
| 18 | 90.9 | 85.3 | 85.3 | 80.6 | 48.5 | 90.9 | 85.3 | 85.3 | 80.6 | | 90.9 | 85.3 | 85.3 | | | 90.9 | | | | | | | 18 |
| 19 | 90.9 | 85.3 | 85.3 | 80.6 | 48.5 | 90.9 | 85.3 | 85.3 | 80.6 | | 90.9 | 85.3 | 85.3 | | | 90.9 | 85.3 | | | | | | 19 |
| 20 | 90.9 | 85.3 | 85.3 | 80.6 | 48.5 | 90.9 | 85.3 | 85.3 | 80.6 | | 90.9 | 85.3 | 85.3 | | | 90.9 | 85.3 | | | | | | 20 |
| 22 | 90.9 | 85.3 | 85.3 | 80.6 | 48.5 | 90.9 | 85.3 | 85.3 | 80.6 | | 90.9 | 85.3 | 85.3 | 80.6 | | 90.9 | 85.3 | 85.3 | | | | | 22 |
| 24 | 90.9 | 85.3 | 85.3 | 80.6 | 48 | 90.9 | 85.3 | 85.3 | 80.6 | 48.5 | 90.9 | 85.3 | 85.3 | 80.6 | | 90.9 | 85.3 | 85.3 | | | | | 24 |
| 26 | 90.9 | 85.3 | 85.3 | 80.6 | 46 | 90.9 | 85.3 | 85.3 | 80.6 | 48.5 | 90.9 | 85.3 | 85.3 | 80.6 | | 90.9 | 85.3 | 85.3 | 80.6 | | | | 26 |
| 28 | 90.9 | 85.3 | 84.6 | 76.9 | 43.7 | 90.9 | 85.3 | 85.3 | 80.6 | 48.5 | 90.9 | 85.3 | 85.3 | 80.6 | 40.6 | 90.9 | 85.3 | 85.3 | 80.6 | | | | 28 |
| 30 | 90.9 | 84.3 | 80.2 | 72.9 | 41.4 | 90.9 | 85.3 | 85.3 | 80.6 | 48.2 | 90.9 | 85.3 | 85.3 | 80.6 | 40.9 | 90.9 | 85.3 | 85.3 | 80.6 | | | | 30 |
| 32 | 89.3 | 80.3 | 75.8 | 68.9 | 39.1 | 90.9 | 85.3 | 85.3 | 80.6 | 47 | 90.9 | 85.3 | 85.3 | 80.6 | 41.6 | 90.9 | 85.3 | 85.3 | 80.6 | 27.5 | | | 32 |
| 34 | 84.1 | 75.7 | 71.4 | 64.9 | 37.8 | 90.9 | 85.3 | 85.3 | 79.4 | 45.2 | 90.9 | 85.3 | 85.3 | 80.6 | 42.2 | 90.9 | 85.3 | 85.3 | 80.6 | 27.7 | | | 34 |
| 36 | 79 | 71.1 | 67.3 | 62.6 | 37 | 90.9 | 85.3 | 83.9 | 76.2 | 43.4 | 90.9 | 85.3 | 85.3 | 80.6 | 42.8 | 90.9 | 85.3 | 85.3 | 80.6 | 27.7 | | | 36 |
| 38 | 74.6 | 67.1 | 65.6 | 61.2 | 36.2 | 90.9 | 84.5 | 80.5 | 73.1 | 41.6 | 90.9 | 85.3 | 85.3 | 80.6 | 43.1 | 90.9 | 85.3 | 85.3 | 80.6 | 27.6 | | | 38 |
| 40 | 72.4 | 65.2 | 63.9 | 59.7 | 35.3 | 90 | 81.7 | 77.1 | 70 | 39.7 | 90.9 | 85.3 | 85.3 | 80.6 | 43.3 | 90.9 | 85.3 | 85.3 | 80.6 | 27.4 | | | 40 |
| 45 | 67.3 | 60.6 | 59.8 | 55.6 | 32.9 | 80.7 | 72.7 | 68.5 | 63.2 | 37.3 | 90.9 | 85.3 | 82 | 74.5 | 42.4 | 90.9 | 85.3 | 85.3 | 80.1 | 27.3 | | | 45 |
| 50 | | | | | | 73.3 | 66 | 64.7 | 60.3 | 35.7 | 88.4 | 79.5 | 75 | 68.2 | 38.8 | 90.7 | 85.3 | 82.7 | 74.5 | 27.3 | | | 50 |
| 55 | | | | | | 69.4 | 62.5 | 61.5 | 57.5 | 34.1 | 80.2 | 72.2 | 68.1 | 63 | 37.2 | 82 | 78.4 | 74.8 | 68.6 | 27.3 | | | 55 |
| 60 | | | | | | 64.6 | 57.7 | 54.3 | 47.7 | 31.8 | 73.3 | 66.5 | 65.1 | 60.7 | 35.9 | 72.9 | 70.2 | 67.2 | 62.9 | 27.3 | | | 60 |
| 65 | | | | | | | | | | | 66 | 63.4 | 61.4 | 55.2 | 34.6 | 65.3 | 63.1 | 60.8 | 58.4 | 27.3 | | | 65 |
| 70 | | | | | | | | | | | 59.5 | 54.7 | 52.9 | 46.8 | 33 | 59.3 | 58.5 | 57.4 | 53.7 | 27.3 | | | 70 |
| 75 | | | | | | | | | | | 46.8 | 39.4 | 36.1 | 30.4 | 22.5 | 55.6 | 54.3 | 53 | 48.1 | 29.7 | | | 75 |
| 80 | | | | | | | | | | | | | | | | 50.8 | 49.2 | 47 | 41.8 | 29.7 | | | 80 |
| 85 | | | | | | | | | | | | | | | | 46.5 | 41.1 | 38.7 | 33.6 | 25.5 | | | 85 |
| 90 | | | | | | | | | | | | | | | | 29.2 | 24.6 | 21.5 | 16.4 | 9.5 | | | 90 |

t_242_07100_00_000 / 07200_00_000 / 07300_00_000 / 07400_00_000 / 07500_00_000



Lifting capacities Forces de levage

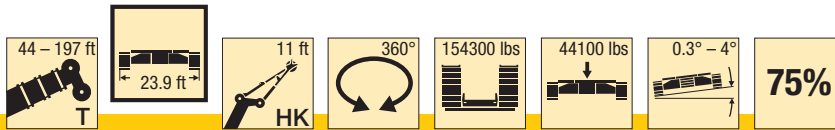
THK

| ft | 100 ft | | | | | 114 ft | | | | | 128 ft | | | | | 142 ft | | | | | ft | | |
|-----|--------|------|------|------|------|--------|------|------|------|------|--------|------|------|------|------|--------|------|------|------|-----|----|----|-----|
| | 0.3° | 0.7° | 1.5° | 2.5° | 4° | 0.3° | 0.7° | 1.5° | 2.5° | 4° | 0.3° | 0.7° | 1.5° | 2.5° | 4° | 0.3° | 0.7° | 1.5° | 2.5° | 4° | | | |
| 19 | 90.9 | | | | | | | | | | | | | | | | | | | | | 19 | |
| 20 | 90.9 | | | | | | | | | | | | | | | | | | | | | | 20 |
| 22 | 90.9 | | | | | | | | | | | | | | | | | | | | | | 22 |
| 24 | 90.9 | 85.3 | | | | 90.9 | | | | | | | | | | | | | | | | | 24 |
| 26 | 90.9 | 85.3 | 85.3 | | | 90.9 | | | | | | | | | | | | | | | | | 26 |
| 28 | 90.9 | 85.3 | 85.3 | | | 90.9 | 85.3 | | | | 90.9 | | | | | | | | | | | | 28 |
| 30 | 90.9 | 85.3 | 85.3 | 80.6 | | 90.9 | 85.3 | 85.3 | | | 90.9 | | | | | | | | | | | | 30 |
| 32 | 90.9 | 85.3 | 85.3 | 80.6 | | 90.9 | 85.3 | 85.3 | | | 90.7 | 85.3 | | | | 72.7 | | | | | | | 32 |
| 34 | 90.9 | 85.3 | 85.3 | 80.6 | | 90.9 | 85.3 | 85.3 | 71.5 | | 90.1 | 85 | | | | 78.4 | | | | | | | 34 |
| 36 | 90.9 | 85.3 | 85.3 | 80.6 | | 90.9 | 85.3 | 85.3 | 71.5 | | 88.9 | 83.7 | 76.8 | | | 76.2 | 71.4 | | | | | | 36 |
| 38 | 90.9 | 85.3 | 85.3 | 80.6 | 18.2 | 90.9 | 85.3 | 83.2 | 71.5 | | 86.9 | 81.1 | 74.6 | 52.1 | | 74.1 | 69.5 | | | | | | 38 |
| 40 | 90.9 | 85.3 | 85.3 | 80.6 | 18.2 | 89.7 | 85.3 | 81.6 | 71.5 | | 84 | 78.5 | 72.4 | 52.1 | | 72.1 | 67.6 | 62.1 | | | | | 40 |
| 45 | 90.9 | 85.3 | 84.7 | 76.2 | 18.2 | 83.8 | 81.1 | 77.7 | 71.4 | 11 | 77 | 72.4 | 67.3 | 52.1 | | 67.2 | 63.3 | 58.6 | 37.4 | | | | 45 |
| 50 | 89.5 | 82.6 | 78.8 | 70.2 | 18.2 | 79.5 | 77 | 74.2 | 68.2 | 11.1 | 71.2 | 67.3 | 62.8 | 52.1 | 4.5 | 62.7 | 59.3 | 55.2 | 37.4 | | | | 50 |
| 55 | 80.5 | 75.7 | 71.7 | 66.3 | 18.2 | 75.7 | 73.6 | 70.6 | 63.2 | 11.2 | 65.8 | 62.2 | 58.4 | 52.1 | 4.6 | 58.7 | 55.6 | 51.8 | 37.4 | | | | 55 |
| 60 | 71.4 | 67.9 | 66 | 62.3 | 18.2 | 71.7 | 68.6 | 64.5 | 58.8 | 11.4 | 60.8 | 57.7 | 54.5 | 50.2 | 5 | 54.8 | 52.1 | 48.7 | 37.4 | | | | 60 |
| 65 | 65.8 | 64 | 61 | 57.7 | 18.2 | 65.1 | 61.8 | 58.3 | 54.3 | 11.7 | 56.1 | 53.5 | 50.8 | 47.4 | 5.5 | 51.2 | 48.8 | 45.7 | 37.5 | | | | 65 |
| 70 | 60.3 | 58 | 55.6 | 52.9 | 18.9 | 58.7 | 56 | 53 | 49.7 | 12.1 | 52.2 | 49.8 | 47.5 | 44.6 | 5.9 | 47.8 | 45.7 | 43 | 37.7 | | | | 70 |
| 75 | 54.7 | 52.9 | 50.9 | 48.7 | 20.1 | 53.1 | 50.8 | 48.4 | 45.6 | 12.6 | 48.4 | 46.4 | 44.4 | 41.8 | 6.4 | 44.8 | 42.9 | 41.1 | 36.9 | | | | 75 |
| 80 | 49.8 | 48.4 | 46.8 | 45 | 21.5 | 48.3 | 46.4 | 44.3 | 42 | 13.2 | 45.1 | 43.3 | 41.6 | 39.1 | 6.7 | 42.3 | 40.9 | 39.2 | 36.3 | | | | 80 |
| 85 | 45.6 | 44.4 | 43.2 | 40.7 | 23.5 | 44 | 42.4 | 40.7 | 38.8 | 14 | 41.9 | 40.3 | 38.4 | 36.1 | 7 | 40.3 | 38.9 | 37.2 | 35.2 | | | | 85 |
| 90 | 41.9 | 41 | 40 | 36.1 | 26.4 | 40.3 | 39 | 37.6 | 36 | 15.5 | 38.7 | 37.1 | 35.7 | 34.5 | 7.4 | 38 | 36.8 | 35.2 | 33.3 | | | | 90 |
| 95 | 38.5 | 37.1 | 35.2 | 30.8 | 26.9 | 37 | 35.9 | 34.7 | 33.4 | 17.1 | 35.9 | 35.2 | 34.3 | 33.2 | 7.9 | 35.8 | 34.6 | 33 | 30.9 | | | | 95 |
| 100 | 35.2 | 29.9 | 29 | 25.1 | 19.7 | 34 | 33.1 | 32.2 | 30.7 | 19.9 | 34.5 | 33.7 | 32.6 | 31.2 | 8.5 | 33.5 | 32.1 | 30.5 | 28.7 | 2.2 | | | 100 |
| 105 | | | | | | 31.3 | 30.7 | 30.3 | 28.7 | 21.9 | 32.4 | 31.4 | 30.3 | 29.1 | 9.5 | 30.8 | 29.6 | 28.2 | 26.7 | 2.7 | | | 105 |
| 110 | | | | | | 30.1 | 29.5 | 27.8 | 24 | 19.2 | 30 | 29.1 | 28.2 | 27.2 | 10.7 | 28.4 | 27.3 | 26.5 | 25.5 | 3.5 | | | 110 |
| 115 | | | | | | 27.5 | 23 | 21.2 | 18.2 | 13.3 | 27.8 | 27.1 | 26.4 | 24.7 | 12.5 | 26.8 | 26.1 | 25.2 | 24.1 | 4.3 | | | 115 |
| 120 | | | | | | | | | | | 25.8 | 25.2 | 24.4 | 21.7 | 14.8 | 25.1 | 24.3 | 23.6 | 22.9 | 4.9 | | | 120 |
| 125 | | | | | | | | | | | 23.9 | 21.9 | 21.4 | 18.5 | 14.3 | 23.6 | 23.2 | 22.8 | 22.1 | 5.8 | | | 125 |
| 130 | | | | | | | | | | | 21 | 17.2 | 15.5 | 12.2 | 7.8 | 22.7 | 22.2 | 21.7 | 19.8 | 7 | | | 130 |
| 135 | | | | | | | | | | | | | | | | 21.2 | 20.8 | 19.6 | 17 | 9.3 | | | 135 |
| 140 | | | | | | | | | | | | | | | | 19.8 | 17.3 | 16.5 | 13.7 | 9.6 | | | 140 |
| 145 | | | | | | | | | | | | | | | | 15 | 11.9 | 10 | 7.4 | 3.9 | | | 145 |

t_242_07100_00_000 / 07200_00_000 / 07300_00_000 / 07400_00_000 / 07500_00_000



Lifting capacities Forces de levage

THK

| ft | 156 ft | | | | | 171 ft | | | | 185 ft | | | | 197 ft | | | | ft | |
|-----|--------|------|------|------|-----|--------|------|------|------|--------|------|------|------|--------|------|------|------|----|-----|
| | 0.3° | 0.7° | 1.5° | 2.5° | 4° | 0.3° | 0.7° | 1.5° | 2.5° | 0.3° | 0.7° | 1.5° | 2.5° | 0.3° | 0.7° | 1.5° | 2.5° | | |
| 40 | 61.3 | 58 | | | | 48.4 | | | | 41.9 | | | | | | | | | 40 |
| 45 | 58.1 | 54.9 | | | | 49.9 | 46.8 | | | | | | | | | | | | 45 |
| 50 | 54.9 | 51.8 | 48.1 | 27.4 | | 47.1 | 44.4 | 37.3 | 18.8 | 40.2 | 38 | | | 35.1 | | | | | 50 |
| 55 | 51.7 | 48.9 | 45.8 | 27.4 | | 44.4 | 42 | 37.3 | 18.8 | 38.4 | 36.4 | 28.4 | 13.2 | 33.6 | 31.6 | 20.7 | | | 55 |
| 60 | 48.8 | 46.3 | 43.5 | 27.4 | | 42 | 39.9 | 36.7 | 18.8 | 36.6 | 34.7 | 28.4 | 13.2 | 32 | 30.2 | 20.7 | 9.1 | | 60 |
| 65 | 46.1 | 43.9 | 41.4 | 27.4 | | 39.9 | 38.2 | 35.5 | 18.8 | 34.8 | 33.1 | 28.3 | 13.2 | 30.6 | 28.8 | 20.6 | 9.1 | | 65 |
| 70 | 43.6 | 41.6 | 39.3 | 27.4 | | 38.1 | 36.5 | 34.1 | 18.8 | 33.2 | 31.6 | 28.2 | 13.2 | 29.1 | 27.5 | 20.6 | 9.1 | | 70 |
| 75 | 41.3 | 39.5 | 37.4 | 27.4 | | 36.4 | 34.9 | 32.6 | 18.8 | 31.6 | 30.2 | 27.7 | 13.2 | 27.7 | 26.2 | 20.6 | 9.1 | | 75 |
| 80 | 39.2 | 37.5 | 35.6 | 27.4 | | 34.7 | 33.2 | 31.2 | 18.8 | 30.1 | 28.8 | 26.9 | 13.2 | 26.4 | 25.1 | 20.5 | 9.1 | | 80 |
| 85 | 37.1 | 35.6 | 33.8 | 27.4 | | 33 | 31.7 | 29.9 | 18.8 | 28.7 | 27.5 | 26 | 13.2 | 25.2 | 23.9 | 20.3 | 9.1 | | 85 |
| 90 | 35.2 | 33.8 | 32.1 | 27.4 | | 31.4 | 30.3 | 28.6 | 18.8 | 27.4 | 26.3 | 24.9 | 13.2 | 24 | 22.8 | 20.1 | 9.1 | | 90 |
| 95 | 33.3 | 32 | 30.5 | 27.4 | | 30 | 29 | 27.5 | 18.8 | 26.2 | 25.2 | 23.9 | 13.2 | 22.9 | 21.8 | 19.6 | 9.1 | | 95 |
| 100 | 31.5 | 30.4 | 29 | 26.9 | | 28.6 | 27.6 | 26.3 | 19 | 25 | 24.1 | 23 | 13.2 | 21.8 | 20.8 | 18.9 | 9.1 | | 100 |
| 105 | 29.8 | 28.7 | 27.4 | 26 | | 27.4 | 26.4 | 25.2 | 19.3 | 24 | 23.1 | 22.1 | 13.2 | 20.8 | 19.9 | 18.3 | 9.1 | | 105 |
| 110 | 28.1 | 27 | 26.2 | 24.8 | | 26.2 | 25.3 | 24.2 | 19.5 | 22.9 | 22.1 | 21.1 | 13.2 | 19.9 | 19.1 | 17.5 | 9.1 | | 110 |
| 115 | 26.6 | 25.8 | 24.5 | 23.1 | | 25.1 | 24.2 | 23.2 | 19.8 | 22 | 21.2 | 20.3 | 13.2 | 19 | 18.3 | 16.8 | 9.1 | | 115 |
| 120 | 24.9 | 23.9 | 22.8 | 21.6 | | 23.9 | 23.1 | 22 | 19.4 | 21.1 | 20.4 | 19.5 | 13.2 | 18.1 | 17.4 | 16.2 | 9.1 | | 120 |
| 125 | 23 | 22.1 | 21.2 | 20.1 | | 22.6 | 21.5 | 20.4 | 18.8 | 20.2 | 19.5 | 18.7 | 13.2 | 17.4 | 16.7 | 15.5 | 9.1 | | 125 |
| 130 | 21.3 | 20.6 | 20.1 | 19.2 | | 20.9 | 20.2 | 19.4 | 17.2 | 19.4 | 18.8 | 18 | 13.2 | 16.6 | 16 | 14.9 | 9.1 | | 130 |
| 135 | 20.2 | 19.8 | 19.2 | 17.9 | | 19.8 | 18.9 | 18.1 | 15.9 | 18.6 | 18 | 17.3 | 13.2 | 15.9 | 15.3 | 14.3 | 9.1 | | 135 |
| 140 | 19.1 | 18.6 | 18 | 16.6 | | 18.3 | 17.6 | 16.8 | 14.8 | 17.8 | 17.2 | 16.3 | 12.7 | 15.3 | 14.7 | 13.8 | 9.1 | | 140 |
| 145 | 17.8 | 17.6 | 17.3 | 15.2 | 3 | 16.9 | 16.3 | 15.7 | 13.5 | 16.7 | 15.9 | 15.1 | 11.3 | 14.6 | 14.1 | 13.3 | 9.1 | | 145 |
| 150 | 17.1 | 16.5 | 15.2 | 12.9 | 4.6 | 15.7 | 15.3 | 14.9 | 12.2 | 15.4 | 14.8 | 14 | 10 | 14 | 13.6 | 12.8 | 8.7 | | 150 |
| 155 | 15.7 | 13.2 | 11.8 | 9.2 | 6.1 | 15 | 14.7 | 14.3 | 11 | 14.3 | 13.7 | 13 | 8.7 | 13.4 | 13 | 12.3 | 7.7 | | 155 |
| 160 | 9.1 | 6.9 | 5.3 | 3.1 | | 14.2 | 13.9 | 13.4 | 9.8 | 13.1 | 12.6 | 12.1 | 7.6 | 12.9 | 12.4 | 11.8 | 6.6 | | 160 |
| 165 | | | | | | 13.2 | 12.5 | 11.2 | 8.7 | 12.1 | 11.7 | 11.2 | 6.5 | 12.1 | 11.5 | 10.9 | 5.5 | | 165 |
| 170 | | | | | | 11.4 | 9.1 | 7.8 | 5.8 | 11.1 | 10.8 | 10.4 | 5.5 | 11.1 | 10.6 | 10.1 | 4.5 | | 170 |
| 175 | | | | | | | | | | 10.2 | 10 | 9.6 | 4.6 | 10.2 | 9.8 | 8.9 | 3.5 | | 175 |
| 180 | | | | | | | | | | 9.5 | 8.6 | 7.5 | 3.7 | 9.4 | 9.1 | 7.6 | 2.7 | | 180 |
| 185 | | | | | | | | | | 7.5 | 5.7 | 4.5 | 2.7 | 8.8 | 8.5 | 6.5 | | | 185 |
| 190 | | | | | | | | | | | | | | 8.1 | 7.7 | 5.4 | | | 190 |
| 195 | | | | | | | | | | | | | | 7.3 | 5.7 | 4.4 | | | 195 |
| 200 | | | | | | | | | | | | | | 3.3 | | | | | 200 |

t_242_07100_00_000 / 07200_00_000 / 07300_00_000 / 07400_00_000 / 07500_00_000



Lifting capacities Forces de levage

THK

| ft | 44 ft | | | | | 58 ft | | | | | 72 ft | | | | | 86 ft | | | | | ft | | |
|----|-------|------|------|------|------|-------|------|------|------|------|-------|------|------|------|------|-------|------|------|------|------|----|----|----|
| | 0.3° | 0.7° | 1.5° | 2.5° | 4° | 0.3° | 0.7° | 1.5° | 2.5° | 4° | 0.3° | 0.7° | 1.5° | 2.5° | 4° | 0.3° | 0.7° | 1.5° | 2.5° | 4° | | | |
| 10 | 90.9 | | | | | 90.9 | | | | | | | | | | | | | | | | 10 | |
| 11 | 90.9 | | | | | 90.9 | | | | | | | | | | | | | | | | | 11 |
| 12 | 90.9 | 85.3 | | | | 90.9 | 85.3 | | | | | | | | | | | | | | | | 12 |
| 13 | 90.9 | 85.3 | | | | 90.9 | 85.3 | | | | | | | | | | | | | | | | 13 |
| 14 | 90.9 | 85.3 | 85.3 | | | 90.9 | 85.3 | | | | 90.9 | | | | | | | | | | | | 14 |
| 15 | 90.9 | 85.3 | 85.3 | | | 90.9 | 85.3 | 85.3 | | | 90.9 | | | | | | | | | | | | 15 |
| 16 | 90.9 | 85.3 | 85.3 | | | 90.9 | 85.3 | 85.3 | | | 90.9 | 85.3 | | | | 90.9 | | | | | | | 16 |
| 17 | 90.9 | 85.3 | 85.3 | 80.6 | | 90.9 | 85.3 | 85.3 | 80.6 | | 90.9 | 85.3 | | | | 90.9 | | | | | | | 17 |
| 18 | 90.9 | 85.3 | 85.3 | 80.6 | | 90.9 | 85.3 | 85.3 | 80.6 | | 90.9 | 85.3 | 85.3 | | | 90.9 | | | | | | | 18 |
| 19 | 90.9 | 85.3 | 85.3 | 80.6 | | 90.9 | 85.3 | 85.3 | 80.6 | | 90.9 | 85.3 | 85.3 | | | 90.9 | 85.3 | | | | | | 19 |
| 20 | 90.9 | 85.3 | 85.3 | 80.6 | 48.5 | 90.9 | 85.3 | 85.3 | 80.6 | | 90.9 | 85.3 | 85.3 | | | 90.9 | 85.3 | | | | | | 20 |
| 22 | 90.9 | 85.3 | 85.3 | 80.6 | 48.5 | 90.9 | 85.3 | 85.3 | 80.6 | | 90.9 | 85.3 | 85.3 | 80.6 | | 90.9 | 85.3 | 85.3 | | | | | 22 |
| 24 | 90.9 | 85.3 | 85.3 | 80.6 | 48 | 90.9 | 85.3 | 85.3 | 80.6 | 48.5 | 90.9 | 85.3 | 85.3 | 80.6 | | 90.9 | 85.3 | 85.3 | | | | | 24 |
| 26 | 90.9 | 85.3 | 85.3 | 80.6 | 46 | 90.9 | 85.3 | 85.3 | 80.6 | 48.5 | 90.9 | 85.3 | 85.3 | 80.6 | | 90.9 | 85.3 | 85.3 | 80.6 | | | | 26 |
| 28 | 90.9 | 85.3 | 84.6 | 76.9 | 43.7 | 90.9 | 85.3 | 85.3 | 80.6 | 48.5 | 90.9 | 85.3 | 85.3 | 80.6 | 40.6 | 90.9 | 85.3 | 85.3 | 80.6 | | | | 28 |
| 30 | 90.9 | 84.3 | 80.2 | 72.9 | 41.4 | 90.9 | 85.3 | 85.3 | 80.6 | 48.2 | 90.9 | 85.3 | 85.3 | 80.6 | 40.9 | 90.9 | 85.3 | 85.3 | 80.6 | | | | 30 |
| 32 | 89.3 | 80.3 | 75.8 | 68.9 | 39.1 | 90.9 | 85.3 | 85.3 | 80.6 | 47 | 90.9 | 85.3 | 85.3 | 80.6 | 41.6 | 90.9 | 85.3 | 85.3 | 80.6 | 27.5 | | | 32 |
| 34 | 84.1 | 75.7 | 71.4 | 64.9 | 37.8 | 90.9 | 85.3 | 85.3 | 79.4 | 45.2 | 90.9 | 85.3 | 85.3 | 80.6 | 42.2 | 90.9 | 85.3 | 85.3 | 80.6 | 27.7 | | | 34 |
| 36 | 79 | 71.1 | 67.3 | 62.6 | 37 | 90.9 | 85.3 | 83.9 | 76.2 | 43.4 | 90.9 | 85.3 | 85.3 | 80.6 | 42.8 | 90.9 | 85.3 | 85.3 | 80.6 | 27.7 | | | 36 |
| 38 | 74.6 | 67.1 | 65.6 | 61.2 | 36.2 | 90.9 | 84.5 | 80.5 | 73.1 | 41.6 | 90.9 | 85.3 | 85.3 | 80.6 | 43.1 | 90.9 | 85.3 | 85.3 | 80.6 | 27.6 | | | 38 |
| 40 | 72.4 | 65.2 | 63.9 | 59.7 | 35.3 | 90 | 81.7 | 77.1 | 70 | 39.7 | 90.9 | 85.3 | 85.3 | 80.6 | 43.3 | 90.9 | 85.3 | 85.3 | 80.6 | 27.4 | | | 40 |
| 45 | 67.3 | 60.6 | 59.8 | 55.6 | 32.9 | 80.7 | 72.7 | 68.5 | 63.2 | 37.3 | 90.7 | 85.2 | 82 | 74.5 | 42.4 | 89.8 | 84.6 | 83.3 | 78.7 | 27.3 | | | 45 |
| 50 | | | | | | 73.3 | 66 | 64.7 | 60.3 | 35.7 | 78.8 | 76.5 | 73.9 | 68.2 | 38.8 | 78.1 | 75.2 | 72.2 | 68.6 | 27.3 | | | 50 |
| 55 | | | | | | 68.4 | 62.5 | 61.5 | 57.5 | 34.1 | 68.7 | 66.9 | 64.9 | 62.2 | 37.2 | 68.4 | 66.9 | 65.1 | 62.4 | 27.3 | | | 55 |
| 60 | | | | | | 60.2 | 57.7 | 54.3 | 47.7 | 31.8 | 60.6 | 59.1 | 58.2 | 56.8 | 35.9 | 62.1 | 60.3 | 58.3 | 56 | 27.3 | | | 60 |
| 65 | | | | | | | | | | | 55.4 | 54.3 | 53.1 | 51.6 | 34.6 | 55.3 | 53.9 | 52.3 | 50.4 | 27.3 | | | 65 |
| 70 | | | | | | | | | | | 49.8 | 49 | 48.1 | 46.5 | 33 | 49.7 | 48.5 | 47.2 | 45.7 | 27.3 | | | 70 |
| 75 | | | | | | | | | | | 45 | 39.4 | 36.1 | 30.4 | 22.5 | 45 | 44 | 42.9 | 41.7 | 29.7 | | | 75 |
| 80 | | | | | | | | | | | | | | | | 40.8 | 40.1 | 39.2 | 38.2 | 29.6 | | | 80 |
| 85 | | | | | | | | | | | | | | | | 37.3 | 36.7 | 36 | 33.6 | 25.5 | | | 85 |
| 90 | | | | | | | | | | | | | | | | 29.2 | 24.6 | 21.5 | 16.4 | 9.5 | | | 90 |

t_242_07110_00_000 / 07210_00_000 / 07310_00_000 / 07410_00_000 / 07510_00_000



Lifting capacities Forces de levage

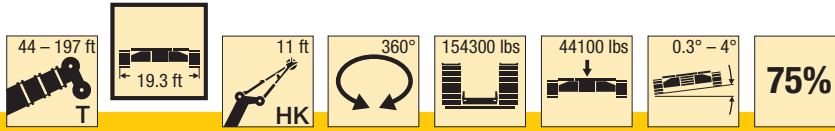
THK

| ft | 100 ft | | | | | 114 ft | | | | | 128 ft | | | | | 142 ft | | | | | ft | | |
|-----|--------|------|------|------|------|--------|------|------|------|------|--------|------|------|------|------|--------|------|------|------|-----|----|----|-----|
| | 0.3° | 0.7° | 1.5° | 2.5° | 4° | 0.3° | 0.7° | 1.5° | 2.5° | 4° | 0.3° | 0.7° | 1.5° | 2.5° | 4° | 0.3° | 0.7° | 1.5° | 2.5° | 4° | | | |
| 19 | 90.9 | | | | | | | | | | | | | | | | | | | | | 19 | |
| 20 | 90.9 | | | | | | | | | | | | | | | | | | | | | | 20 |
| 22 | 90.9 | | | | | | | | | | | | | | | | | | | | | | 22 |
| 24 | 90.9 | 85.3 | | | | 90.9 | | | | | | | | | | | | | | | | | 24 |
| 26 | 90.9 | 85.3 | 85.3 | | | 90.9 | | | | | | | | | | | | | | | | | 26 |
| 28 | 90.9 | 85.3 | 85.3 | | | 90.9 | 85.3 | | | | 90.9 | | | | | | | | | | | | 28 |
| 30 | 90.9 | 85.3 | 85.3 | 80.6 | | 90.9 | 85.3 | 85.3 | | | 90.9 | | | | | | | | | | | | 30 |
| 32 | 90.9 | 85.3 | 85.3 | 80.6 | | 90.9 | 85.3 | 85.3 | | | 90.7 | 85.3 | | | | 72.7 | | | | | | | 32 |
| 34 | 90.9 | 85.3 | 85.3 | 80.6 | | 90.9 | 85.3 | 85.3 | 71.5 | | 90.1 | 85 | | | | 78.4 | | | | | | | 34 |
| 36 | 90.9 | 85.3 | 85.3 | 80.6 | | 90.9 | 85.3 | 85.3 | 71.5 | | 88.9 | 83.7 | 76.8 | | | 76.2 | 71.4 | | | | | | 36 |
| 38 | 90.9 | 85.3 | 85.3 | 80.6 | 18.2 | 90.9 | 85.3 | 83.2 | 71.5 | | 86.9 | 81.1 | 74.6 | 52.1 | | 74.1 | 69.5 | | | | | | 38 |
| 40 | 90.9 | 85.3 | 85.3 | 80.6 | 18.2 | 89.7 | 85.3 | 81.6 | 71.5 | | 84 | 78.5 | 72.4 | 52.1 | | 72.1 | 67.6 | 62.1 | | | | | 40 |
| 45 | 88.7 | 84 | 80.8 | 75.7 | 18.2 | 83.8 | 81.1 | 77.4 | 71 | 11 | 77 | 72.4 | 67.3 | 52.1 | | 67.2 | 63.3 | 58.6 | 37.4 | | | | 45 |
| 50 | 76.8 | 74.7 | 71.6 | 68 | 18.2 | 77.3 | 74 | 70.4 | 65.9 | 11.1 | 71.1 | 67.3 | 62.8 | 52.1 | 4.5 | 62.7 | 59.3 | 55.2 | 37.4 | | | | 50 |
| 55 | 69.4 | 66.8 | 64 | 60.7 | 18.2 | 68 | 65.1 | 61.9 | 58.3 | 11.2 | 64.9 | 61.9 | 58.4 | 52.1 | 4.6 | 58.7 | 55.6 | 51.8 | 37.4 | | | | 55 |
| 60 | 61.3 | 59.2 | 56.9 | 54.2 | 18.2 | 59.9 | 57.5 | 54.9 | 51.9 | 11.4 | 58.3 | 55.7 | 52.9 | 49.5 | 5 | 54.8 | 52.1 | 48.7 | 37.4 | | | | 60 |
| 65 | 54.6 | 52.8 | 50.9 | 48.7 | 18.2 | 53.1 | 51.1 | 49 | 46.5 | 11.7 | 51.7 | 49.5 | 47.2 | 44.4 | 5.5 | 50.5 | 48.2 | 45.6 | 37.5 | | | | 65 |
| 70 | 48.9 | 47.5 | 45.9 | 44 | 18.9 | 47.6 | 45.9 | 44.1 | 42 | 12.1 | 47.1 | 45.2 | 43.2 | 40.8 | 5.9 | 46.3 | 44.6 | 42.5 | 37.7 | | | | 70 |
| 75 | 44.1 | 42.9 | 41.6 | 40 | 20.1 | 42.8 | 41.4 | 39.9 | 38 | 12.6 | 43 | 41.6 | 40.1 | 38.2 | 6.4 | 42.4 | 40.7 | 38.8 | 36.2 | | | | 75 |
| 80 | 40 | 39 | 37.9 | 36.6 | 21.5 | 38.9 | 37.7 | 36.6 | 35.4 | 13.2 | 39.7 | 38.3 | 36.8 | 35.1 | 6.7 | 38.3 | 36.9 | 35.2 | 33.2 | | | | 80 |
| 85 | 36.5 | 35.6 | 34.7 | 33.6 | 23.5 | 36.7 | 35.9 | 35.1 | 33.9 | 14 | 36.1 | 34.9 | 33.7 | 32.1 | 7 | 35.6 | 34.3 | 32.8 | 31.1 | | | | 85 |
| 90 | 33.4 | 32.7 | 31.9 | 31 | 26.4 | 34.3 | 33.5 | 32.5 | 31.3 | 15.5 | 33 | 32 | 30.9 | 29.5 | 7.4 | 32.5 | 31.3 | 30.1 | 28.6 | | | | 90 |
| 95 | 30.8 | 30.5 | 30.2 | 29.8 | 26.9 | 31.6 | 30.8 | 30 | 29 | 17.1 | 30.2 | 29.3 | 28.4 | 27.2 | 7.9 | 30.1 | 29.3 | 28.3 | 27 | | | | 95 |
| 100 | 29.8 | 29.5 | 28.9 | 25.1 | 19.7 | 29.1 | 28.5 | 27.8 | 26.9 | 19.9 | 28.1 | 27.4 | 26.5 | 25.5 | 8.5 | 28.3 | 27.5 | 26.5 | 25.3 | 2.2 | | | 100 |
| 105 | | | | | | 26.9 | 26.4 | 25.8 | 25 | 21.5 | 25.9 | 25.3 | 24.7 | 24 | 9.5 | 26.1 | 25.3 | 24.5 | 23.4 | 2.7 | | | 105 |
| 110 | | | | | | 25 | 24.5 | 24 | 23.4 | 19.2 | 24.7 | 24.2 | 23.7 | 23.1 | 10.7 | 24.1 | 23.5 | 22.7 | 21.7 | 3.5 | | | 110 |
| 115 | | | | | | 23.2 | 22.7 | 21.2 | 18.2 | 13.3 | 23.6 | 23.1 | 22.5 | 21.8 | 12.5 | 22.3 | 21.7 | 21.1 | 20.3 | 4.3 | | | 115 |
| 120 | | | | | | | | | | | 21.9 | 21.5 | 21 | 20.4 | 14.8 | 21 | 20.4 | 19.8 | 19 | 4.9 | | | 120 |
| 125 | | | | | | | | | | | 20.5 | 20.1 | 19.6 | 18.5 | 14.3 | 19.4 | 18.9 | 18.5 | 18 | 5.8 | | | 125 |
| 130 | | | | | | | | | | | 19 | 17.2 | 15.5 | 12.2 | 7.8 | 18.5 | 18.2 | 17.8 | 17.3 | 7 | | | 130 |
| 135 | | | | | | | | | | | | | | | | 17.5 | 17.1 | 16.7 | 16.1 | 9.3 | | | 135 |
| 140 | | | | | | | | | | | | | | | | 16.2 | 15.9 | 15.6 | 13.7 | 9.6 | | | 140 |
| 145 | | | | | | | | | | | | | | | | 15 | 11.9 | 10 | 7.4 | 3.9 | | | 145 |

t_242_07110_00_000 / 07210_00_000 / 07310_00_000 / 07410_00_000 / 07510_00_000



Lifting capacities Forces de levage

THK

| ft | 156 ft | | | | | 171 ft | | | | 185 ft | | | | 197 ft | | | | ft |
|-----|--------|------|------|------|-----|--------|------|------|------|--------|------|------|------|--------|------|------|------|-----|
| | 0.3° | 0.7° | 1.5° | 2.5° | 4° | 0.3° | 0.7° | 1.5° | 2.5° | 0.3° | 0.7° | 1.5° | 2.5° | 0.3° | 0.7° | 1.5° | 2.5° | |
| 40 | 61.3 | 58 | | | | 48.4 | | | | | | | | | | | | 40 |
| 45 | 58.1 | 54.9 | 49.7 | | | 49.9 | 46.8 | | | 41.9 | | | | | | | | 45 |
| 50 | 54.9 | 51.8 | 48.1 | 27.4 | | 47.1 | 44.4 | 37.3 | 18.8 | 40.2 | 38 | | | 35.1 | | | | 50 |
| 55 | 51.7 | 48.9 | 45.8 | 27.4 | | 44.4 | 42 | 37.3 | 18.8 | 38.4 | 36.4 | 28.4 | 13.2 | 33.6 | 31.6 | 20.7 | | 55 |
| 60 | 48.8 | 46.3 | 43.5 | 27.4 | | 42 | 39.9 | 36.7 | 18.8 | 36.6 | 34.7 | 28.4 | 13.2 | 32 | 30.2 | 20.7 | 9.1 | 60 |
| 65 | 46.1 | 43.9 | 41.4 | 27.4 | | 39.9 | 38.2 | 35.5 | 18.8 | 34.8 | 33.1 | 28.3 | 13.2 | 30.6 | 28.8 | 20.6 | 9.1 | 65 |
| 70 | 43.6 | 41.6 | 39.3 | 27.4 | | 38.1 | 36.5 | 34.1 | 18.8 | 33.2 | 31.6 | 28.2 | 13.2 | 29.1 | 27.5 | 20.6 | 9.1 | 70 |
| 75 | 41.2 | 39.4 | 37.3 | 27.4 | | 36.4 | 34.9 | 32.6 | 18.8 | 31.6 | 30.2 | 27.7 | 13.2 | 27.7 | 26.2 | 20.6 | 9.1 | 75 |
| 80 | 38.2 | 36.5 | 34.7 | 27.4 | | 34.7 | 33.2 | 31.2 | 18.8 | 30.1 | 28.8 | 26.9 | 13.2 | 26.4 | 25.1 | 20.5 | 9.1 | 80 |
| 85 | 34.6 | 33.2 | 31.6 | 27.4 | | 33 | 31.7 | 29.9 | 18.8 | 28.7 | 27.5 | 26 | 13.2 | 25.2 | 23.9 | 20.3 | 9.1 | 85 |
| 90 | 32 | 30.9 | 29.6 | 26.9 | | 31.4 | 30.2 | 28.6 | 18.8 | 27.4 | 26.3 | 24.9 | 13.2 | 24 | 22.8 | 20.1 | 9.1 | 90 |
| 95 | 29.6 | 28.4 | 27.2 | 25.8 | | 29.1 | 27.9 | 26.6 | 18.8 | 26.2 | 25.2 | 23.9 | 13.2 | 22.9 | 21.8 | 19.6 | 9.1 | 95 |
| 100 | 27.7 | 26.7 | 25.6 | 24.3 | | 26.7 | 25.7 | 24.4 | 19 | 25 | 24.1 | 23 | 13.2 | 21.8 | 20.8 | 18.9 | 9.1 | 100 |
| 105 | 25.6 | 24.7 | 23.8 | 22.6 | | 24.9 | 23.9 | 22.8 | 19.3 | 24 | 23 | 21.9 | 13.2 | 20.8 | 19.9 | 18.3 | 9.1 | 105 |
| 110 | 23.6 | 22.9 | 22.1 | 21.1 | | 22.9 | 22 | 20.9 | 19.5 | 22.6 | 21.6 | 20.6 | 13.2 | 19.9 | 19.1 | 17.5 | 9.1 | 110 |
| 115 | 22.3 | 21.5 | 20.7 | 19.7 | | 21.4 | 20.7 | 19.8 | 18.3 | 20.8 | 19.9 | 18.9 | 13.2 | 19 | 18.3 | 16.8 | 9.1 | 115 |
| 120 | 20.6 | 19.9 | 19.2 | 18.3 | | 20 | 19.3 | 18.4 | 17.4 | 19 | 18.2 | 17.3 | 13.2 | 18.1 | 17.4 | 16.2 | 9.1 | 120 |
| 125 | 19 | 18.4 | 17.7 | 16.9 | | 18.4 | 17.7 | 17 | 16.1 | 17.4 | 16.7 | 15.9 | 13.2 | 17.2 | 16.5 | 15.5 | 9.1 | 125 |
| 130 | 17.5 | 17 | 16.4 | 15.7 | | 17 | 16.3 | 15.7 | 14.9 | 16 | 15.3 | 14.5 | 13.1 | 15.9 | 15.2 | 14.4 | 9.1 | 130 |
| 135 | 16.3 | 15.9 | 15.4 | 14.8 | | 15.6 | 15.1 | 14.5 | 13.7 | 14.6 | 14 | 13.3 | 12.5 | 14.6 | 13.9 | 13.2 | 9.1 | 135 |
| 140 | 15.3 | 14.8 | 14.4 | 13.8 | | 14.4 | 13.9 | 13.3 | 12.6 | 13.4 | 12.8 | 12.2 | 11.4 | 13.4 | 12.7 | 12.1 | 9.1 | 140 |
| 145 | 14.1 | 13.8 | 13.4 | 12.8 | 3 | 13.2 | 12.8 | 12.3 | 11.7 | 12.2 | 11.7 | 11.2 | 10.5 | 12.2 | 11.6 | 11 | 9.1 | 145 |
| 150 | 13.1 | 12.8 | 12.4 | 12 | 4.6 | 12.2 | 11.8 | 11.3 | 10.8 | 11.1 | 10.7 | 10.2 | 9.6 | 11.1 | 10.6 | 10 | 8.7 | 150 |
| 155 | 12.1 | 11.8 | 11.4 | 9.2 | 6.1 | 11.2 | 10.8 | 10.4 | 9.9 | 10.1 | 9.7 | 9.3 | 8.7 | 10.1 | 9.7 | 9.1 | 7.7 | 155 |
| 160 | 9.1 | 6.9 | 5.3 | 3.1 | | 10.3 | 10 | 9.6 | 9.2 | 9.2 | 8.8 | 8.4 | 7.6 | 9.2 | 8.8 | 8.3 | 6.6 | 160 |
| 165 | | | | | | 9.4 | 9.2 | 8.9 | 8.5 | 8.4 | 8 | 7.6 | 6.5 | 8.3 | 7.9 | 7.5 | 5.5 | 165 |
| 170 | | | | | | 8.7 | 8.4 | 7.8 | 5.8 | 7.5 | 7.2 | 6.9 | 5.5 | 7.5 | 7.2 | 6.7 | 4.5 | 170 |
| 175 | | | | | | | | | | 6.8 | 6.5 | 6.2 | 4.6 | 6.8 | 6.4 | 6.1 | 3.5 | 175 |
| 180 | | | | | | | | | | 6.1 | 5.8 | 5.6 | 3.7 | 6 | 5.7 | 5.4 | 2.7 | 180 |
| 185 | | | | | | | | | | 5.4 | 5.2 | 4.5 | 2.7 | 5.4 | 5.1 | 4.8 | | 185 |
| 190 | | | | | | | | | | | | | | 4.7 | 4.5 | 4.2 | | 190 |
| 195 | | | | | | | | | | | | | | 4.1 | 3.9 | 3.7 | | 195 |
| 200 | | | | | | | | | | | | | | 3.3 | | | | 200 |

t_242_07110_00_000 / 07210_00_000 / 07310_00_000 / 07410_00_000 / 07510_00_000



Remarks referring to load charts

1. The lifting capacities do not exceed 75 % of the tipping load according to ASME B 30.5.
The crane's structural steelwork is in accordance with EN 13000 and ASME B 30.5.
2. For the calculation of the load charts at least a wind speed of 30 ft/s (9 m/s, 20.1 mph) and regarding the load a sail area of 1 m² per ton load and a wind resistance coefficient of 1.2 on the load have been taken into account. For lifting of loads with large sail areas and/or high wind resistance coefficients the maximum wind speed as stated in the load charts has to be reduced.
3. Lifting capacities are given in kips.
4. The weight of the hook blocks and hooks is part of the load and therefore it must be deducted from the lifting capacities.
5. Working radii are measured from the slewing centre.
6. The lifting capacities given for the telescopic boom apply if the folding jib is removed.
7. Lifting capacities above 295400 lbs/332900 lbs only with additional pulley block/special equipment.
8. Lateral inclination $\pm 0.3^\circ$.
9. The data of this brochure serves only for general information. All information is provided without warranty. Instructions for the correct commissioning of the crane please take from the operation manual and the load chart book.

Remarques relatives aux tableaux des charges

1. La capacité de charge ne doit pas dépasser 75 % de la charge de basculement conformément à ASME B 30.5.
La structure métallique de la grue est conforme à EN 13000 et ASME B 30.5.
2. Une vitesse de vent de 30 ft/s (9 m/s, 20.1 mph) minimum, une surface de prise au vent de 1 m² par tonne ainsi qu'un coefficient de résistance au vent de la charge 1,2 sont pris en compte pour le calcul des tableaux de charge. Lorsque des charges ayant une surface de prise au vent et/ou un coefficient de résistance au vent plus élevé(e)s sont levées, la vitesse de vent maximale indiquée dans les tableaux de charge doit être réduite.
3. Les charges sont indiquées en kips.
4. Le poids du crochet de levage resp. de la moufle à crochet est une partie de la charge et doit donc être déduit de la capacité de charge.
5. Les portées sont calculées à partir de l'axe de rotation.
6. Les charges indiquées pour la flèche télescopique sont valables lorsque la fléchette pliante est démontée.
7. Les charges supérieures à 295400 lbs/332900 lbs seulement avec moufle additionnel/équipement supplémentaire.
8. Inclinaison latérale $\pm 0,3^\circ$.
9. Les données de cette brochure sont données à titre informatif. Ces renseignements sont sans garantie. Les consignes relatives à la bonne mise en service de la grue sont disponibles dans le manuel d'utilisation et le manuel de tableaux de charge.