



View thousands of Crane Specifications on [FreeCraneSpecs.com](https://FreeCraneSpecs.com)



View thousands of Crane Specifications on [FreeCraneSpecs.com](https://FreeCraneSpecs.com)

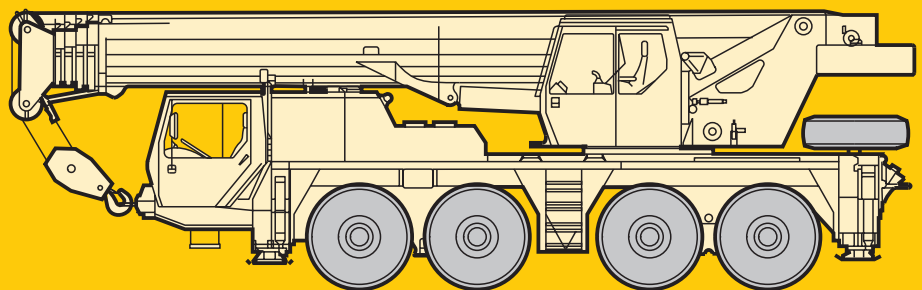
## **Technical Data** **Caractéristiques techniques**

# **LTM 1080/1**

## **Mobile Crane** **Grue automotrice**

**Telescopic boom**  
**Flèche télescopique**

**157 ft**



# **LIEBHERR**



# Lifting capacities on telescopic boom. Forces de levage à la flèche télescopique.

LTM 1080/1



35 ft – 157 ft



360°



35500 lbs

85%

| ft  | 35 ft |      | 47 ft | 58 ft   | 69 ft   | 80 ft   | 92 ft    | 103 ft   | 114 ft   | 125 ft | 136 ft | 148 ft | 157 ft | ft  |
|-----|-------|------|-------|---------|---------|---------|----------|----------|----------|--------|--------|--------|--------|-----|
|     | *     |      |       |         |         |         |          |          |          |        |        |        |        |     |
| 9   | 183   |      |       |         |         |         |          |          |          |        |        |        |        | 9   |
| 10  | 169   | 149  | 148   | 137     |         |         |          |          |          |        |        |        |        | 10  |
| 11  | 158   | 141  | 140   | 131     |         |         |          |          |          |        |        |        |        | 11  |
| 12  | 148   | 133  | 133   | 126     | 110     |         |          |          |          |        |        |        |        | 12  |
| 13  | 139   | 126  | 126   | 121     | 107     |         |          |          |          |        |        |        |        | 13  |
| 14  | 131   | 120  | 120   | 116     | 104     |         |          |          |          |        |        |        |        | 14  |
| 15  | 124   | 114  | 114   | 111     | 101     | 84      |          |          |          |        |        |        |        | 15  |
| 16  | 117   | 109  | 109   | 106     | 98      | 81.5    |          |          |          |        |        |        |        | 16  |
| 17  | 111   | 104  | 104   | 102     | 95.5    | 79.5    | 67       |          |          |        |        |        |        | 17  |
| 18  | 105   | 99.5 | 99    | 97.5    | 93      | 77.5    | 65.5     |          |          |        |        |        |        | 18  |
| 20  | 94    | 90.5 | 90    | 89      | 87.5    | 73.5    | 63       | 54.5     |          |        |        |        |        | 20  |
| 22  | 85    | 83   | 83    | 82      | 80.5    | 69.5    | 60.5     | 52.4     |          |        |        |        |        | 22  |
| 24  | 77.5  | 76.5 | 76    | 75      | 73      | 66      | 58.1     | 50.4     | 43.5     |        |        |        |        | 24  |
| 26  | 71    | 70   | 69.5  | 68      | 65      | 62      | 55.7     | 48.4     | 42.2     |        |        |        |        | 26  |
| 28  |       |      | 64    | 62      | 58.9    | 56.9    | 53.1     | 46.6     | 41       | 35.5   | 30.3   |        |        | 28  |
| 30  |       |      | 58.6  | 56.3    | 53.3    | 51.6    | 50.1     | 44.9     | 39.8     | 34.5   | 29.6   | 26     | 20.9   | 30  |
| 32  |       |      | 54.2  | 51.4    | 48.8    | 47.3    | 46.3     | 43.1     | 38.8     | 33.5   | 28.9   | 25.6   | 20.5   | 32  |
| 34  |       |      | 50.2  | 47.4    | 45      | 43.7    | 42.9     | 41       | 37.4     | 32.6   | 28.2   | 25     | 20     | 34  |
| 36  |       |      | 46.4  | 44      | 41.7    | 40.5    | 39.9     | 38.7     | 36       | 31.6   | 27.5   | 24.3   | 19.5   | 36  |
| 38  |       |      | 42.7  | 40.5    | 38.4    | 37.4    | 36.9     | 36.4     | 34.5     | 30.7   | 26.9   | 23.6   | 19     | 38  |
| 40  |       |      |       | 37.4    | 35.4    | 34.5    | 34.2     | 34.1     | 32.9     | 29.8   | 26.2   | 23     | 18.6   | 40  |
| 45  |       |      |       | 31.1    | 29.8    | 29.1    | 28.9     | 29       | 28.5     | 27.4   | 24.1   | 21.2   | 17.5   | 45  |
| 50  |       |      |       |         | 25.2    | 24.7    | 24.6     | 24.9     | 24.6     | 24.6   | 22.3   | 19.7   | 16.4   | 50  |
| 55  |       |      |       |         | 21.2    | 21      | 21.1     | 21.4     | 21.3     | 21.8   | 20.6   | 18.3   | 15.4   | 55  |
| 60  |       |      |       |         |         | 18.9    | 18.2     | 18.6     | 18.5     | 19     | 19     | 17.1   | 14.4   | 60  |
| 65  |       |      |       |         |         | 17.4    | 15.4     | 17       | 16.2     | 16.8   | 16.8   | 15.9   | 13.5   | 65  |
| 70  |       |      |       |         |         | 15.9    | 14.1     | 15.8     | 14.3     | 14.9   | 15     | 14.8   | 12.8   | 70  |
| 75  |       |      |       |         |         |         | 12.9     | 14.4     | 13.3     | 13.1   | 13.3   | 13.6   | 12     | 75  |
| 80  |       |      |       |         |         |         |          | 12.9     | 12.4     | 11.5   | 12.3   | 12.2   | 11.3   | 80  |
| 85  |       |      |       |         |         |         |          | 11.4     | 11.7     | 10.8   | 11.5   | 10.6   | 10.5   | 85  |
| 90  |       |      |       |         |         |         |          | 10.2     | 11       | 10.2   | 10.3   | 9.5    | 9.4    | 90  |
| 95  |       |      |       |         |         |         |          |          | 10.2     | 9.5    | 9.3    | 8.5    | 8.4    | 95  |
| 100 |       |      |       |         |         |         |          |          | 9.5      | 8.8    | 8.4    | 7.6    | 7.5    | 100 |
| 105 |       |      |       |         |         |         |          |          |          | 8.1    | 7.6    | 6.9    | 6.7    | 105 |
| 110 |       |      |       |         |         |         |          |          |          | 7.4    | 6.9    | 6.2    | 6.1    | 110 |
| 115 |       |      |       |         |         |         |          |          |          |        | 6.3    | 5.6    | 5.5    | 115 |
| 120 |       |      |       |         |         |         |          |          |          |        | 5.8    | 5      | 4.9    | 120 |
| 125 |       |      |       |         |         |         |          |          |          |        |        | 4.5    | 4.4    | 125 |
| 130 |       |      |       |         |         |         |          |          |          |        |        | 4.1    | 4      | 130 |
| 135 |       |      |       |         |         |         |          |          |          |        |        | 3.7    | 3.6    | 135 |
| 140 |       |      |       |         |         |         |          |          |          |        |        |        | 3.2    | 140 |
| I   | 0     |      | 0/0   | 46/0/0  | 92/0/0  | 92/0/0  | 92/0/0   | 92/0/0   | 92/0/0   | 92/0   | 92/46  | 92     | 100    | I   |
| II  | 0     |      | 46/0  | 46/0/0  | 46/0/0  | 92/0/0  | 92/0/0   | 92/92/0  | 92/92/46 | 92/92  | 92/92  | 92     | 100    | II  |
| III | 0     |      | 0/0   | 0/0/0   | 0/0/0   | 0/92/0  | 46/92/46 | 46/92/92 | 92/92/92 | 92/92  | 92/92  | 92     | 100    | III |
| IV  | 0     |      | 0/0   | 0/46/0  | 0/92/46 | 0/46/92 | 0/92/92  | 46/46/92 | 46/92/92 | 46/92  | 92/92  | 92     | 100    | IV  |
| V   | 0     |      | 0/46  | 0/46/92 | 0/46/92 | 0/46/92 | 0/46/92  | 0/46/92  | 0/46/92  | 46/92  | 46/92  | 92     | 100    | V   |

\* over rear / en arrière

TAB 106139/106145

## Remarks referring to load charts.

- The tabulated lifting capacities do not exceed 85% of the tipping load.
- The crane's structural steelwork is in accordance with DIN 15018, part 3. Design and construction of the crane comply with DIN 15018, part 2, and with F.E.M. regulations.
- The 85% overturning limit values take into account wind force 5 = wind speed 20 mph.
- Lifting capacities are given in kips.
- The weight of the hook blocks and hooks must be deducted from the lifting capacities.
- Working radii are measured from the slewing centreline.
- The lifting capacities given for the telescopic boom only apply if the folding jib is taken off.
- Lifting capacities are subject to modifications.
- Lifting capacities above 128 kips / 172 kips only with additional pulley block / special equipment.

## Remarques relatives aux tableaux des charges.

- Les forces de levage indiquées ne dépassent pas 85% de la charge de basculement.
- La norme DIN 15018, 3ème partie est appliquée pour les charpentes. La construction de la grue est réalisée conformément à la norme DIN 15018, 2ème partie, et aux règles de la F. E. M.
- A 85% de la charge de basculement, il a été tenu compte d'un vent de force 5 = vitesse de vent 20 mph.
- Les forces de levage sont données en kips.
- Les poids des moufles et crochets doit être soustrait des charges indiquées.
- Les portées sont calculées à partir de l'axe de rotation.
- Les forces indiquées pour la flèche télescopique s'entendent fléchette dépliée.
- Les forces de levage sont modifiables sans préavis.
- Forces de levage plus de 128 kips / 172 kips seulement avec un moufle complémentaire / équipement supplémentaire.

# Lifting capacities are given in kips (1,000 lbs).

2



# Lifting capacities on telescopic boom. Forces de levage à la flèche télescopique.

LTM 1080/1



35 ft – 157 ft



360°



18740 lbs

85%

| ft  | 35 ft | 47 ft | 58 ft   | 69 ft   | 80 ft   | 92 ft    | 103 ft   | 114 ft   | 125 ft | 136 ft | 148 ft | 157 ft | ft  |
|-----|-------|-------|---------|---------|---------|----------|----------|----------|--------|--------|--------|--------|-----|
| 10  | 134   | 134   | 124     |         |         |          |          |          |        |        |        |        | 10  |
| 11  | 127   | 127   | 119     |         |         |          |          |          |        |        |        |        | 11  |
| 12  | 120   | 120   | 114     | 99.5    |         |          |          |          |        |        |        |        | 12  |
| 13  | 113   | 113   | 110     | 97      |         |          |          |          |        |        |        |        | 13  |
| 14  | 108   | 107   | 105     | 94.5    |         |          |          |          |        |        |        |        | 14  |
| 15  | 102   | 102   | 101     | 91.5    | 76      |          |          |          |        |        |        |        | 15  |
| 16  | 97    | 96.5  | 95.5    | 89      | 74      |          |          |          |        |        |        |        | 16  |
| 17  | 92    | 92    | 90.5    | 85      | 72      | 61       |          |          |        |        |        |        | 17  |
| 18  | 88    | 87.5  | 85.5    | 80      | 70.5    | 59.6     |          |          |        |        |        |        | 18  |
| 20  | 79    | 78.5  | 76      | 70      | 66      | 57.1     | 49.6     |          |        |        |        |        | 20  |
| 22  | 71.5  | 71    | 66.5    | 61.5    | 58.5    | 54.3     | 47.6     |          |        |        |        |        | 22  |
| 24  | 64    | 63.5  | 58.4    | 54.5    | 52      | 50.2     | 45.6     | 39.5     |        |        |        |        | 24  |
| 26  | 56.7  | 56.6  | 51.8    | 48.5    | 46.4    | 45       | 43.6     | 38.4     |        |        |        |        | 26  |
| 28  |       | 50    | 46.6    | 43.5    | 41.8    | 40.6     | 39.8     | 36.9     | 32.3   | 27.6   |        |        | 28  |
| 30  |       | 44    | 41.8    | 39      | 37.5    | 36.6     | 36       | 35.1     | 31.4   | 26.9   | 23.6   | 19     | 30  |
| 32  |       | 39.9  | 37.8    | 35.3    | 34      | 33.3     | 32.9     | 32.1     | 30.5   | 26.3   | 23.2   | 18.6   | 32  |
| 34  |       | 37.3  | 34.3    | 32.2    | 31.1    | 30.6     | 30.3     | 29.7     | 29     | 25.6   | 22.7   | 18.2   | 34  |
| 36  |       | 34.2  | 31.1    | 29.5    | 28.6    | 28.2     | 28       | 27.5     | 27.2   | 24.9   | 22.1   | 17.7   | 36  |
| 38  |       | 31.1  | 27.9    | 26.9    | 27.1    | 25.8     | 26.4     | 25.3     | 25.3   | 24.2   | 21.5   | 17.3   | 38  |
| 40  |       |       | 25.1    | 24.5    | 25.8    | 23.6     | 25.2     | 23.3     | 23.6   | 23.3   | 20.9   | 16.9   | 40  |
| 45  |       |       | 21.6    | 19.7    | 23      | 20.3     | 22.2     | 20.8     | 19.9   | 19.7   | 19.3   | 15.9   | 45  |
| 50  |       |       |         | 17.4    | 20      | 18.1     | 19.2     | 18.7     | 17.4   | 17.9   | 17     | 14.9   | 50  |
| 55  |       |       |         | 15.8    | 17.2    | 16.4     | 16.5     | 16.6     | 15.9   | 16     | 14.8   | 13.8   | 55  |
| 60  |       |       |         |         | 14.7    | 15       | 14.2     | 14.9     | 14.4   | 14     | 12.9   | 12.6   | 60  |
| 65  |       |       |         |         | 12.7    | 13.1     | 12.6     | 13.5     | 12.9   | 12.2   | 11.2   | 11     | 65  |
| 70  |       |       |         |         | 11.1    | 12.1     | 11.7     | 11.8     | 11     | 10.5   | 9.6    | 9.5    | 70  |
| 75  |       |       |         |         |         | 10.9     | 10.6     | 10.3     | 9.5    | 9.1    | 8.3    | 8.2    | 75  |
| 80  |       |       |         |         |         |          | 9.3      | 9        | 8.4    | 8      | 7.2    | 7.1    | 80  |
| 85  |       |       |         |         |         |          | 8.4      | 8.1      | 7.4    | 7      | 6.3    | 6.1    | 85  |
| 90  |       |       |         |         |         |          | 7.5      | 7.3      | 6.6    | 6.2    | 5.5    | 5.4    | 90  |
| 95  |       |       |         |         |         |          |          | 6.5      | 5.9    | 5.5    | 4.8    | 4.7    | 95  |
| 100 |       |       |         |         |         |          |          | 5.8      | 5.3    | 4.9    | 4.1    | 4      | 100 |
| 105 |       |       |         |         |         |          |          |          | 4.7    | 4.3    | 3.6    | 3.5    | 105 |
| 110 |       |       |         |         |         |          |          |          | 4.1    | 3.8    | 3.1    | 3      | 110 |
| 115 |       |       |         |         |         |          |          |          |        | 3.3    | 2.6    | 2.5    | 115 |
| 120 |       |       |         |         |         |          |          |          |        | 2.9    | 2.2    | 2.1    | 120 |
| I   | 0     | 0/0   | 46/0/0  | 92/0/0  | 92/0/0  | 92/0/0   | 92/0/0   | 92/0/0   | 92/0   | 92/46  | 92     | 100    | I   |
| II  | 0     | 46/0  | 46/0/0  | 46/0/0  | 92/0/0  | 92/0/0   | 92/92/0  | 92/92/46 | 92/92  | 92/92  | 92     | 100    | II  |
| III | 0     | 0/0   | 0/0/0   | 0/0/0   | 0/92/0  | 46/92/46 | 46/92/92 | 92/92/92 | 92/92  | 92/92  | 92     | 100    | III |
| IV  | 0     | 0/0   | 0/46/0  | 0/92/46 | 0/46/92 | 0/92/92  | 46/46/92 | 46/92/92 | 46/92  | 92/92  | 92     | 100    | IV  |
| V   | 0     | 0/46  | 0/46/92 | 0/46/92 | 0/46/92 | 0/46/92  | 0/46/92  | 0/46/92  | 46/92  | 46/92  | 92     | 100    | V   |

TAB 106142

## Les forces de levage sont données en kips (1,000 lbs).



# Lifting capacities on telescopic boom. Forces de levage à la flèche télescopique.

LTM 1080/1



35 ft – 58 ft



0°



35500 lbs<sup>1)</sup>  
18740 lbs<sup>2)</sup>

85%

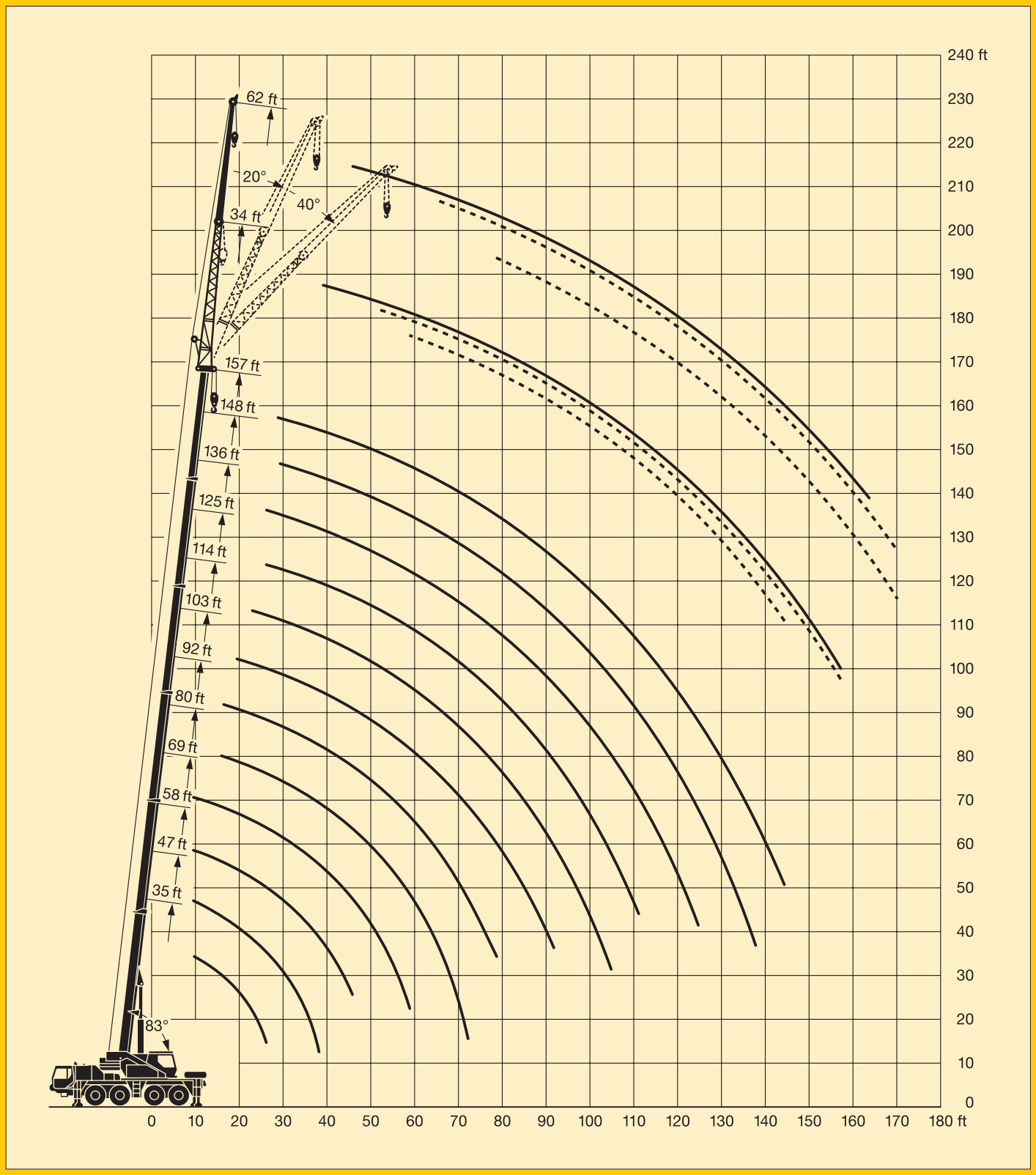
| ft  | 35 ft |      | 47 ft |      | 58 ft    |      | ft  |
|-----|-------|------|-------|------|----------|------|-----|
|     | 1)    | 2)   | 1)    | 2)   | 1)       | 2)   |     |
| 10  | 39.6  | 37.8 | 41    | 39.3 | 41.8     | 40.1 | 10  |
| 11  | 36.9  | 35.2 | 38.4  | 36.7 | 39.2     | 37.5 | 11  |
| 12  | 34.5  | 32.9 | 36    | 34.4 | 36.8     | 35.2 | 12  |
| 13  | 32.2  | 30.7 | 33.8  | 32.3 | 34.6     | 33.1 | 13  |
| 14  | 30.3  | 28.8 | 31.8  | 30.4 | 32.6     | 31.2 | 14  |
| 15  | 28.4  | 27   | 30    | 28.6 | 30.8     | 29.4 | 15  |
| 16  | 26.8  | 25.4 | 28.3  | 27   | 29.2     | 27.8 | 16  |
| 17  | 25.3  | 24   | 26.8  | 25.6 | 27.7     | 26.4 | 17  |
| 18  | 23.9  | 22.7 | 25.5  | 24.3 | 26.3     | 25.1 | 18  |
| 20  | 21.3  | 20.1 | 22.9  | 21.7 | 23.7     | 22.6 | 20  |
| 22  | 19.1  | 18.1 | 20.7  | 19.7 | 21.6     | 20.5 | 22  |
| 24  | 17.2  | 16.2 | 18.8  | 17.8 | 19.7     | 18.7 | 24  |
| 26  | 15.5  | 14.6 | 17.1  | 16.1 | 18       | 17   | 26  |
| 28  |       |      | 15.6  | 14.7 | 16.5     | 15.6 | 28  |
| 30  |       |      | 14.3  | 13.4 | 15.1     | 14.3 | 30  |
| 32  |       |      | 13.1  | 12.3 | 14       | 13.2 | 32  |
| 34  |       |      | 12    | 11.3 | 12.9     | 12.2 | 34  |
| 36  |       |      | 11.1  | 10.4 | 12       | 11.3 | 36  |
| 38  |       |      | 10.2  | 9.5  | 11       | 10.3 | 38  |
| 40  |       |      |       |      | 10.2     | 9.5  | 40  |
| 45  |       |      |       |      | 8.4      | 7.8  | 45  |
| I   | 0     |      | 0/ 0  |      | 46/ 0/ 0 |      | I   |
| II  | 0     |      | 46/ 0 |      | 46/ 0/ 0 |      | II  |
| III | 0     |      | 0/ 0  |      | 0/ 0/ 0  |      | III |
| IV  | 0     |      | 0/ 0  |      | 0/46/ 0  |      | IV  |
| V   | 0     |      | 0/46  |      | 0/46/92  |      | V   |

TAB 106189 / 106191



# Lifting heights. Hauteurs de levage.

LTM 1080/1



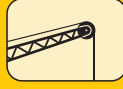


# Lifting capacities on the folding jib. Forces de levage à la fléchette pliante.

LTM 1080/1



125 ft – 157 ft



34 ft – 62 ft



360°



35500 lbs

85%

| ft  | 125 ft |      |      |       |     |     | 136 ft |     |     |       |     |     | 148 ft |     |     |       |     |     | 157 ft |     |     |       |     |     | ft  |
|-----|--------|------|------|-------|-----|-----|--------|-----|-----|-------|-----|-----|--------|-----|-----|-------|-----|-----|--------|-----|-----|-------|-----|-----|-----|
|     | 34 ft  |      |      | 62 ft |     |     | 34 ft  |     |     | 62 ft |     |     | 34 ft  |     |     | 62 ft |     |     | 34 ft  |     |     | 62 ft |     |     |     |
|     | 0°     | 20°  | 40°  | 0°    | 20° | 40° | 0°     | 20° | 40° | 0°    | 20° | 40° | 0°     | 20° | 40° | 0°    | 20° | 40° | 0°     | 20° | 40° | 0°    | 20° | 40° |     |
| 34  | 21     |      |      |       |     |     |        |     |     |       |     |     |        |     |     |       |     |     |        |     |     |       |     |     | 34  |
| 36  | 20.7   |      |      |       |     |     |        |     |     |       |     |     |        |     |     |       |     |     |        |     |     |       |     |     | 36  |
| 38  | 20.5   |      |      |       |     |     |        |     |     |       |     |     |        |     |     |       |     |     |        |     |     |       |     |     | 38  |
| 40  | 20.3   |      |      |       |     |     |        |     |     |       |     |     |        |     |     |       |     |     |        |     |     |       |     |     | 40  |
| 45  | 19.3   |      |      |       |     |     |        |     |     |       |     |     |        |     |     |       |     |     |        |     |     |       |     |     | 45  |
| 50  | 17.9   | 15.5 |      |       |     |     |        |     |     |       |     |     |        |     |     |       |     |     |        |     |     |       |     |     | 50  |
| 55  | 16.6   | 15.1 | 13.3 |       |     |     |        |     |     |       |     |     |        |     |     |       |     |     |        |     |     |       |     |     | 55  |
| 60  | 15.4   | 14.6 | 13.1 | 7.3   |     |     |        |     |     |       |     |     |        |     |     |       |     |     |        |     |     |       |     |     | 60  |
| 65  | 14.4   | 13.9 | 12.9 | 7.1   | 6.1 |     |        |     |     |       |     |     |        |     |     |       |     |     |        |     |     |       |     |     | 65  |
| 70  | 13.4   | 13   | 12.7 | 7     | 5.9 |     |        |     |     |       |     |     |        |     |     |       |     |     |        |     |     |       |     |     | 70  |
| 75  | 12.4   | 12.1 | 12.2 | 6.8   | 5.8 | 5.1 |        |     |     |       |     |     |        |     |     |       |     |     |        |     |     |       |     |     | 75  |
| 80  | 11.4   | 11.3 | 11.4 | 6.6   | 5.7 | 5   |        |     |     |       |     |     |        |     |     |       |     |     |        |     |     |       |     |     | 80  |
| 85  | 10.1   | 10.5 | 10.7 | 6.5   | 5.6 | 4.9 |        |     |     |       |     |     |        |     |     |       |     |     |        |     |     |       |     |     | 85  |
| 90  | 9      | 9.6  | 10   | 6.3   | 5.5 | 4.9 |        |     |     |       |     |     |        |     |     |       |     |     |        |     |     |       |     |     | 90  |
| 95  | 8      | 8.7  | 9.1  | 6.2   | 5.4 | 4.8 |        |     |     |       |     |     |        |     |     |       |     |     |        |     |     |       |     |     | 95  |
| 100 | 7.2    | 7.7  | 8.2  | 6     | 5.3 | 4.8 |        |     |     |       |     |     |        |     |     |       |     |     |        |     |     |       |     |     | 100 |
| 105 | 6.4    | 6.9  | 7.3  | 5.8   | 5.2 | 4.8 |        |     |     |       |     |     |        |     |     |       |     |     |        |     |     |       |     |     | 105 |
| 110 | 5.9    | 6.2  | 6.5  | 5.6   | 5.1 | 4.7 |        |     |     |       |     |     |        |     |     |       |     |     |        |     |     |       |     |     | 110 |
| 115 | 5.6    | 5.8  | 5.8  | 5.5   | 5   | 4.7 |        |     |     |       |     |     |        |     |     |       |     |     |        |     |     |       |     |     | 115 |
| 120 | 5.3    | 5.4  |      | 5.1   | 4.9 | 4.6 |        |     |     |       |     |     |        |     |     |       |     |     |        |     |     |       |     |     | 120 |
| 125 | 5      | 5.1  |      | 4.6   | 4.9 | 4.6 |        |     |     |       |     |     |        |     |     |       |     |     |        |     |     |       |     |     | 125 |
| 130 | 4.7    | 4.8  |      | 4.2   | 4.8 | 4.6 |        |     |     |       |     |     |        |     |     |       |     |     |        |     |     |       |     |     | 130 |
| 135 | 4.5    | 4.5  |      | 3.9   | 4.4 | 4.6 |        |     |     |       |     |     |        |     |     |       |     |     |        |     |     |       |     |     | 135 |
| 140 | 4.1    | 4.2  |      | 3.7   | 3.9 | 4.3 |        |     |     |       |     |     |        |     |     |       |     |     |        |     |     |       |     |     | 140 |
| 145 | 3.8    |      |      | 3.5   | 3.6 |     |        |     |     |       |     |     |        |     |     |       |     |     |        |     |     |       |     |     | 145 |
| 150 | 3.4    |      |      | 3.3   | 3.4 |     |        |     |     |       |     |     |        |     |     |       |     |     |        |     |     |       |     |     | 150 |
| 155 |        |      |      | 3.1   | 3.2 |     |        |     |     |       |     |     |        |     |     |       |     |     |        |     |     |       |     |     | 155 |
| 160 |        |      |      | 2.9   | 3   |     |        |     |     |       |     |     |        |     |     |       |     |     |        |     |     |       |     |     | 160 |
| 165 |        |      |      | 2.7   | 2.8 |     |        |     |     |       |     |     |        |     |     |       |     |     |        |     |     |       |     |     | 165 |
| 170 |        |      |      | 2.6   | 2.6 |     |        |     |     |       |     |     |        |     |     |       |     |     |        |     |     |       |     |     | 170 |
| 175 |        |      |      | 2.3   |     |     |        |     |     |       |     |     |        |     |     |       |     |     |        |     |     |       |     |     | 175 |
| 180 |        |      |      |       |     |     |        |     |     |       |     |     |        |     |     |       |     |     |        |     |     |       |     |     | 180 |
| I   |        |      |      | 92/ 0 |     |     |        |     |     |       |     |     |        |     |     |       |     |     |        |     |     |       |     |     | I   |
| II  |        |      |      | 92/92 |     |     |        |     |     |       |     |     |        |     |     |       |     |     |        |     |     |       |     |     | II  |
| III |        |      |      | 92/92 |     |     |        |     |     |       |     |     |        |     |     |       |     |     |        |     |     |       |     |     | III |
| IV  |        |      |      | 46/92 |     |     |        |     |     |       |     |     |        |     |     |       |     |     |        |     |     |       |     |     | IV  |
| V   |        |      |      | 46/92 |     |     |        |     |     |       |     |     |        |     |     |       |     |     |        |     |     |       |     |     | V   |

TAB 106161 / 106167 / 106173

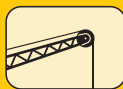


# Lifting capacities on the folding jib. Forces de levage à la fléchette pliante.

LTM 1080/1



125 ft - 157 ft



34 ft - 62 ft



360°



18740 lbs

85%

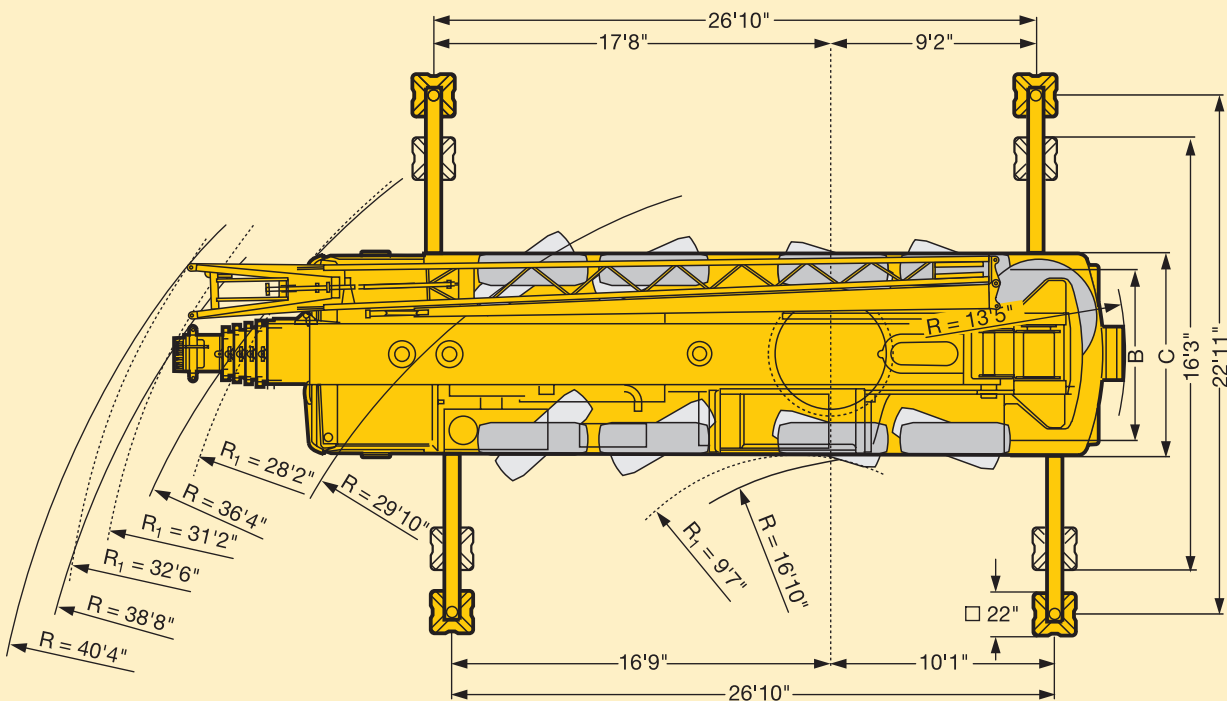
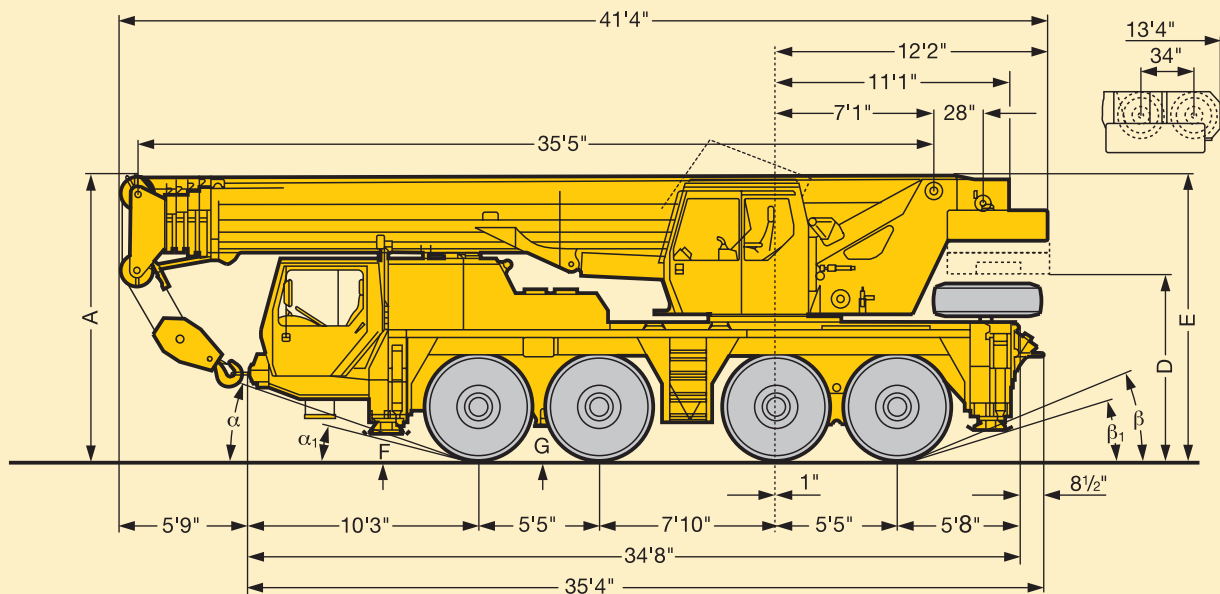
| ft  | 125 ft |      |      |       |     |     | 136 ft |      |      |       |     |       | 148 ft |      |     |       |     |     | 157 ft |     |     |       |     |     | ft  |     |     |
|-----|--------|------|------|-------|-----|-----|--------|------|------|-------|-----|-------|--------|------|-----|-------|-----|-----|--------|-----|-----|-------|-----|-----|-----|-----|-----|
|     | 34 ft  |      |      | 62 ft |     |     | 34 ft  |      |      | 62 ft |     |       | 34 ft  |      |     | 62 ft |     |     | 34 ft  |     |     | 62 ft |     |     |     |     |     |
|     | 0°     | 20°  | 40°  | 0°    | 20° | 40° | 0°     | 20°  | 40°  | 0°    | 20° | 40°   | 0°     | 20°  | 40° | 0°    | 20° | 40° | 0°     | 20° | 40° | 0°    | 20° | 40° |     |     |     |
| 34  | 19     |      |      |       |     |     |        |      |      |       |     |       |        |      |     |       |     |     |        |     |     |       |     |     | 34  |     |     |
| 36  | 18.9   |      |      |       |     |     |        |      |      |       |     |       |        |      |     |       |     |     |        |     |     |       |     |     | 36  |     |     |
| 38  | 18.7   |      |      |       |     |     |        |      |      |       |     |       |        |      |     |       |     |     |        |     |     |       |     |     | 38  |     |     |
| 40  | 18.4   |      |      | 7.4   |     |     | 15.2   |      |      |       |     |       |        | 12.4 |     |       |     |     |        | 9   |     |       |     |     | 40  |     |     |
| 45  | 17.5   |      |      | 7.3   |     |     | 14.4   |      |      |       |     |       |        | 11.7 |     |       |     |     |        | 8.9 |     |       |     |     | 45  |     |     |
| 50  | 15.7   | 14.1 |      | 7.1   |     |     | 13.7   | 12.2 |      | 6.6   |     |       |        | 11.1 | 9.9 |       | 5.9 |     |        | 8.6 |     |       | 5.3 |     | 50  |     |     |
| 55  | 13.7   | 13.7 | 12.1 | 6.9   |     |     | 12.8   | 11.6 | 11   | 6.4   |     |       |        | 10.5 | 9.4 |       | 5.8 |     |        | 8.2 | 8   |       | 5.3 |     | 55  |     |     |
| 60  | 11.9   | 13.1 | 11.9 | 6.7   | 5.6 |     | 11.7   | 11   | 10.4 | 6.2   | 5.3 |       |        | 9.9  | 9   | 8.7   | 5.8 |     |        | 7.9 | 7.7 | 7.7   | 5.4 |     | 60  |     |     |
| 65  | 10.3   | 11.4 | 11.7 | 6.5   | 5.5 |     | 10.2   | 10.5 | 10   | 6.1   | 5.2 |       |        | 9.4  | 8.6 | 8.2   | 5.7 |     |        | 7.6 | 7.5 | 7.4   | 5.3 |     | 65  |     |     |
| 70  | 9      | 10   | 10.7 | 6.3   | 5.4 |     | 8.9    | 9.7  | 9.6  | 6     | 5.2 |       |        | 8.7  | 8.2 | 7.9   | 5.6 | 4.8 |        | 7.3 | 7.2 | 7.1   | 5.1 | 4.5 | 70  |     |     |
| 75  | 8.3    | 8.7  | 9.5  | 6.2   | 5.3 | 4.6 | 8.4    | 8.7  | 9    | 5.9   | 5.1 |       |        | 7.8  | 7.8 | 7.6   | 5.5 | 4.8 |        | 7   | 6.9 | 6.9   | 4.9 | 4.5 | 75  |     |     |
| 80  | 7.8    | 7.6  | 8.3  | 6     | 5.2 | 4.6 | 7.7    | 7.6  | 8.3  | 5.8   | 5   | 4.5   |        | 6.8  | 7.4 | 7.3   | 5.4 | 4.7 | 4.2    | 6.6 | 6.7 | 6.7   | 4.8 | 4.4 | 3.9 | 80  |     |
| 85  | 7.3    | 6.9  | 7.2  | 5.9   | 5.1 | 4.5 | 6.8    | 7.2  | 7.2  | 5.6   | 4.9 | 4.4   |        | 5.9  | 6.7 | 7     | 5.3 | 4.6 | 4.2    | 5.7 | 6.4 | 6.5   | 4.6 | 4.4 | 3.9 | 85  |     |
| 90  | 6.5    | 6.6  | 6.5  | 5.5   | 5   | 4.5 | 6      | 6.5  | 6.7  | 5.4   | 4.8 | 4.4   |        | 5.2  | 5.9 | 6.3   | 5.2 | 4.5 | 4.1    | 4.9 | 5.7 | 6.1   | 4.5 | 4.3 | 3.9 | 90  |     |
| 95  | 5.8    | 6.2  | 6.3  | 5     | 4.9 | 4.4 | 5.2    | 5.8  | 6.2  | 5     | 4.7 | 4.3   |        | 4.5  | 5.1 | 5.6   | 4.8 | 4.5 | 4.1    | 4.2 | 4.9 | 5.5   | 4.3 | 4.3 | 3.9 | 95  |     |
| 100 | 5.1    | 5.6  | 5.9  | 4.7   | 4.8 | 4.4 | 4.6    | 5.1  | 5.5  | 4.7   | 4.6 | 4.3   |        | 3.8  | 4.4 | 4.9   | 4.3 | 4.4 | 4.1    | 3.6 | 4.2 | 4.7   | 4   | 4.1 | 3.8 | 100 |     |
| 105 | 4.5    | 4.9  | 5.2  | 4.5   | 4.7 | 4.3 | 4      | 4.5  | 4.8  | 4.5   | 4.6 | 4.3   |        | 3.2  | 3.8 | 4.2   | 3.7 | 4.4 | 4.1    | 3   | 3.6 | 4.1   | 3.5 | 4   | 3.8 | 105 |     |
| 110 | 4      | 4.4  | 4.6  | 4.3   | 4.2 | 4.3 | 3.5    | 3.9  | 4.2  | 4     | 4.2 | 4.2   |        | 2.7  | 3.3 | 3.6   | 3.2 | 4.1 | 4.1    | 2.5 | 3.1 | 3.5   | 3   | 3.9 | 3.8 | 110 |     |
| 115 | 3.5    | 3.9  | 4.1  | 4     | 4   | 4.1 | 3      | 3.4  | 3.7  | 3.5   | 4   | 4.1   |        | 2.3  | 2.8 | 3.1   | 2.7 | 3.7 | 4      | 2.1 | 2.6 | 3     | 2.5 | 3.5 | 3.8 | 115 |     |
| 120 | 3.1    | 3.4  |      | 3.5   | 3.8 | 3.8 | 2.6    | 3    | 3.2  | 3     | 3.8 | 3.9   |        | 1.8  | 2.3 | 2.6   | 2.3 | 3.2 | 3.8    |     | 2.1 | 2.5   | 2.1 | 3   | 3.6 | 120 |     |
| 125 | 2.7    | 3    |      | 3.1   | 3.7 | 3.7 | 2.2    | 2.5  |      | 2.6   | 3.3 | 3.7   |        |      | 1.8 | 2.1   | 1.9 | 2.7 | 3.3    |     |     | 2     |     | 2.5 | 3.2 | 125 |     |
| 130 | 2.3    | 2.5  |      | 2.8   | 3.3 | 3.6 | 1.9    | 2.2  |      | 2.3   | 2.9 | 3.4   |        |      | 1.4 | 1.7   | 1.5 | 2.3 | 2.9    |     |     | 1.5   |     | 2.1 | 2.8 | 130 |     |
| 135 | 1.9    | 2.1  |      | 2.4   | 2.9 | 3.3 | 1.5    | 1.8  |      | 1.9   | 2.5 | 3     |        |      |     |       |     |     |        |     |     |       |     |     | 1.7 | 2.3 | 135 |
| 140 | 1.6    | 1.8  |      | 2.1   | 2.6 | 2.9 |        |      |      | 1.6   | 2.2 | 2.6   |        |      |     |       |     |     |        |     |     |       |     |     |     | 1.9 | 140 |
| 145 |        |      |      | 1.8   | 2.2 |     |        |      |      |       |     | 1.9   | 2.2    |      |     |       |     |     |        |     |     |       |     |     |     |     | 145 |
| 150 |        |      |      | 1.5   | 1.9 |     |        |      |      |       |     | 1.5   | 1.9    |      |     |       |     |     |        |     |     |       |     |     |     |     | 150 |
| 155 |        |      |      | 1.6   |     |     |        |      |      |       |     | 1.5   |        |      |     |       |     |     |        |     |     |       |     |     |     |     | 155 |
| I   |        |      |      | 92/ 0 |     |     |        |      |      |       |     | 92/46 |        |      |     |       |     |     |        |     |     |       |     |     |     | 100 | I   |
| II  |        |      |      | 92/92 |     |     |        |      |      |       |     | 92/92 |        |      |     |       |     |     |        |     |     |       |     |     |     | 100 | II  |
| III |        |      |      | 92/92 |     |     |        |      |      |       |     | 92/92 |        |      |     |       |     |     |        |     |     |       |     |     |     | 100 | III |
| IV  |        |      |      | 46/92 |     |     |        |      |      |       |     | 92/92 |        |      |     |       |     |     |        |     |     |       |     |     |     | 100 | IV  |
| V   |        |      |      | 46/92 |     |     |        |      |      |       |     | 46/92 |        |      |     |       |     |     |        |     |     |       |     |     |     | 100 | V   |

TAB 106158 / 106164 / 106170



# Dimensions. Encombrement.

LTM 1080/1



R<sub>1</sub> = All-wheel steering  
Direction toutes roues

| 16.00 R 25 | Dimensions / Encombrement |       |      |    |      |       |         |         |          |            |         |           |
|------------|---------------------------|-------|------|----|------|-------|---------|---------|----------|------------|---------|-----------|
|            | A                         | A     | B    | C  | D    | E     | F       | G       | $\alpha$ | $\alpha_1$ | $\beta$ | $\beta_1$ |
|            | 12'8"                     | 12'4" | 7'7" | 9' | 9'6" | 12'8" | 13'1/3" | 15'1/3" | 19°      | 16°        | 23°     | 16°       |

\* lowered / abaissé

\*\* with folding jib / avec fléchette pliante





## Weights. Poids.

LTM 1080/1



| Axle<br>Essieu | 1     | 2     | 3     | 4     | Total weight<br>Poids total |
|----------------|-------|-------|-------|-------|-----------------------------|
| lbs            | 26400 | 26400 | 26400 | 26400 | 105600 <sup>1)</sup>        |

<sup>1)</sup> with 18740 lbs counterweight / avec contrepoids 18740 lbs

| Load (kips)<br>Forces de levage kips | No. of sheaves<br>Poulies | No. of lines<br>Brins | Weight lbs<br>Poids lbs |
|--------------------------------------|---------------------------|-----------------------|-------------------------|
| 176                                  | 7                         | 14                    | 950                     |
| 128                                  | 5                         | 10                    | 730                     |
| 84                                   | 3                         | 7                     | 880                     |
| 35                                   | 1                         | 3                     | 520                     |
| 12.5                                 | -                         | 1                     | 240                     |

## Working speeds. Vitesses.



|  | 1          | 2   | 3    | 4    | 5    | 6    | R <sub>1</sub> | R <sub>2</sub> |      |
|--|------------|-----|------|------|------|------|----------------|----------------|------|
|  | 6.0        | 9.2 | 14.4 | 22.4 | 32.9 | 49.7 | 6              | 14.4           | 35 % |
|  | 3.9        | 6   | 9.3  | 14.5 | 21.2 | 33   | 3.9            | 6              | 60 % |
|  | 16.00 R 25 |     |      |      |      |      |                |                |      |



| Drive<br>Mécanismes | infinitely variable<br>en continu  | Rope diameter / Rope length<br>Diamètre du câble / Longueur du câble | Max. single line pull<br>Effort au brin maxi. |
|---------------------|--|--|---|
|                     | 0 - 426 ft/min single line<br>ft/min au brin simple  | $\frac{2}{3}$ " / 820'   | 12800 lbs                                     |
|                     | 0 - 426 ft/min single line<br>ft/min au brin simple  | $\frac{2}{3}$ " / 690'   | 12800 lbs                                     |
|                     | 0 - 2.0 rpm  |  |   |
|                     | approx. 48 seconds to reach 83° boom angle<br>env. 48 s jusqu'à 83°                                    |  |   |
|                     | approx. 240 seconds for boom extension from 35 ft - 157 ft<br>env. 240 s pour passer de 35 ft - 157 ft |  |   |



## Crane carrier.

LTM 1080/1

|                           |  |
|---------------------------|--|
| <b>Frame:</b>             | Liebherr designed and manufactured, box-type, torsion resistant design of high-tensile fine grained structural steel.  |
| <b>Outriggers:</b>        | 4-point support, all-hydraulic horizontal and vertical operation.  |
| <b>Engine:</b>            | 6-cylinder Diesel engine, make Liebherr, type D 9406 TI-E, watercooled, 320 kW (435 HP) at 2100 min <sup>-1</sup> acc. to ECE-R 24.03 and 2001/27/EG (Euro 3), max. torque 1900 Nm at 1100 – 1400 min <sup>-1</sup> , engine management with Liebherr data bus.<br>Fuel tank: 400 l. |
| <b>Transmission:</b>      | ZF power shift gear, with torque converter, lock-up and integrated off-road ratio, additional activation of front wheel drive, 6 forwards and 2 reverse speeds.  |
| <b>Axles:</b>             | All axles steered. Axles 1, 3 and 4 with planetary gears and differential locks.   |
| <b>Suspension:</b>        | All axles with hydropneumatic suspension and hydraulic locking facility.   |
| <b>Tyres:</b>             | 8 tyres. Tyre size: 16.00 R 25.  |
| <b>Steering:</b>          | Front axles mechanically steered, with hydraulic power assistance and stand-by steering pump. Rear axles hydraulically steered. All axles steered hydrostatically from crane cab. Steering acc. to EC directive 70/311/EEC.  |
| <b>Brakes:</b>            | Service brake: All-wheel servo-air brake, dual circuit system.<br>Hand brake: Spring-loaded, acting on all wheels of axles 2, 3 and 4.<br>Sustained-action brake: Exhaust retarder with additional Liebherr braking system<br>Brakes acc. to EC directive 71/320/EEC.                |
| <b>Driving cab:</b>       | Two-men driving cab, steel sheet design, with dipping varnish and powder coating. With control elements and instruments for driving.   |
| <b>Electrical system:</b> | Control of the electrical and electronical components by modern data bus technique. 24 Volt DC, 2 batteries, lighting according to traffic regulations.  |

## Crane superstructure.

|                         |  |
|-------------------------|--|
| <b>Frame:</b>           | Liebherr-made torsion resistant, welded construction of high-tensile structural steel, linked to carrier by a three-row roller slewing ring for 360° continuous rotation.  |
| <b>Crane drive:</b>     | Diesel-hydraulic with 1 double axial piston variable displacement pump with automatic capacity control, 1 double gear pump, driven by the carrier Diesel engine, open oil circuits with electrically controlled “load sensing”, operation of 4 movements simultaneously.                             |
| <b>Crane control:</b>   | By 2 control levers (joystick type) and by electronic speed variation of Diesel engine, electric pilot control with stepless control of all crane motions. Liebherr data bus technique for data transfer.  |
| <b>Hoist gear:</b>      | Axial piston fixed displacement motor, hoist drum with integrated planetary gear and spring-loaded static brake, actuation by open oil circuit.  |
| <b>Luffing gear:</b>    | 1 differential ram with pilot operated brake valve.  |
| <b>Slewing gear:</b>    | Hydraulic motor, planetary gear with spring-loaded static brake, actuation by open oil circuit. Continuous control of slewing speed.   |
| <b>Crane cab:</b>       | All-steel construction, fully galvanized, with safety glass, heater, operating and control elements. Cab tiltable backwards.   |
| <b>Safety devices:</b>  | LICCON safe load indicator, hoist limit switch, safety valves against rupture of pipes and hoses.  |
| <b>Telescopic boom:</b> | Buckling resistant and torsion-proof design of high tensile steel with oviform boom profile, 1 base section and 5 telescopic sections. All telescopic sections extendable hydraulically and independently from one another. Rapid-cycle telescoping system “TELEMATIK”. Boom length: 35 ft – 157 ft. |
| <b>Counterweight:</b>   | 18740 lbs basic counterweight.   |
| <b>Electric system:</b> | Control of the electrical and electronical components by modern data bus technique.  |

## Complementary equipment.

|                                  |   |
|----------------------------------|---|
| <b>Folding jib:</b>              | 34 ft – 62 ft long, for mounting on telescopic boom at 0°, 20° and 40°.             |
| <b>2nd hoist gear:</b>           | For two-hook operation, or with folding jib in case main hoist shall remain reeved. |
| <b>Additional counterweight:</b> | 16760 lbs for a total counterweight of 35500 lbs.                                   |
| <b>Drive 8 x 8:</b>              | Axle 2 additionally driven.   |

Other equipments available on request.



## Châssis porteur.

**LTM 1080/1**

|                                 |   |
|---------------------------------|---|
| <b>Châssis:</b>                 | Fabrication Liebherr, construction en caisson indéformable, en acier à haute résistance à grains fins.  |
| <b>Stabilisateurs:</b>          | Calage en 4 points, à telescopage horizontal et vérinage entièrement hydrauliques.  |
| <b>Moteur:</b>                  | Diesel 6 cylindres, marque Liebherr, type D 9406 TI-E, refroidi par eau, puissance 320 kW (435 ch) à 2100 min <sup>-1</sup> selon ECE-R 24.03 et 2001/27/EG (Euro 3), couple max. 1900 Nm à 1100 – 1400 min <sup>-1</sup> , gestion électronique par Liebherr bus de données. Réservoir à carburant: 400 l.                           |
| <b>Boîte de vitesse:</b>        | ZF à changement de rapports en charge avec convertisseur de couple, lock-up et étage gamme terrain intégré et actionnement additionnel de l'entraînement de l'essieu avant. 6 rapports avants et 2 rapports arrières.   |
| <b>Essieux:</b>                 | Tous les essieux sont directeurs. Les essieux 1, 3 et 4 avec planétaires et blockages de différentiels.   |
| <b>Suspension:</b>              | Tous les essieux sont suspendus hydropneumatiquement et blocable hydrauliquement.   |
| <b>Pneumatiques:</b>            | 8 roues. Taille: 16.00 R 25.  |
| <b>Direction:</b>               | Direction mécanique à assistance hydraulique des essieux avants. Pompe de secours. Direction des essieux arrières enclenchable hydrauliquement. Direction hydrostatique de tous les essieux à commande depuis la cabine du grutier. Direction selon directive CE 70/311/CEE.  |
| <b>Freins:</b>                  | Frein de service: servo-frein pneumatique à deux circuits indépendants agissant sur toutes les roues. Frein à main: par cylindres à ressorts, agissant sur les roues des essieux 2, 3 et 4. Frein à régime continu: Ralentisseur sur échappement avec système de freinage additionnel Liebherr. Freins selon directive CE 71/320/CEE. |
| <b>Cabine:</b>                  | Cabine conducteur bi-place en tôle d'acier revêtue anti-corrosion par bain de cataphorèse, peinte par poudrage polyester et cuisson au four comportant tous les organes de commande et de contrôle nécessaire à la conduite du véhicule.  |
| <b>Installation électrique:</b> | Composants électriques et électroniques reliés entre eux par bus de données moderne. Courant continu 24 Volts, 2 batteries, éclairage conforme au code de la route.   |

## Partie tournante.

|                             |  |
|-----------------------------|--|
| <b>Châssis:</b>             | Construction mécanosoudée en tôle d'acier à haute résistance à grains fins. Reliée au porteur par une couronne d'orientation à 3 rangées de rouleaux. Rotation totale 360°.  |
| <b>Entraînement:</b>        | Diesel hydraulique avec 1 pompe double à débit variable et régulation de puissance automatique, 1 pompe à engrenages double, entraînés par le moteur Diesel du porteur, circuits hydrauliques ouverts avec "load sensing", régulé électriquement. 4 mouvements simultanés praticables.         |
| <b>Commande:</b>            | Par deux manipulateurs (type manche à balai) dans la cabine du grutier, et par variation électronique du régime du moteur Diesel, servo-commande électrique avec régulation progressive en continu de tous les mouvements en simultané. Technique de transmission par bus de données Liebherr. |
| <b>Treuil:</b>              | Moteur hydraulique à cylindrée constante, treuil à réducteur planétaire incorporé et frein d'arrêt à ressort, en circuit hydraulique ouvert.   |
| <b>Relevage de flèche:</b>  | 1 vérin différentiel à soupape pilotage de freinage.   |
| <b>Orientation:</b>         | Moteur hydraulique, réducteur planétaire, frein d'arrêt commandé par ressort en circuit hydraulique ouvert. Vitesse d'orientation réglable en continu.   |
| <b>Cabine de grue:</b>      | Entièrement en tôle d'acier avec vitrage de sécurité, chauffage, tous les instruments de commande et de contrôle. Cabine inclinable sur l'arrière.   |
| <b>Sécurités:</b>           | Contrôleur de charge LICCON, fin de course crochet haut, clapets de sécurité en cas de ruptures de flexibles.  |
| <b>Flèche télescopique:</b> | Construction en acier à haute résistance à grains fins à profil oval à haute résistance au flambage, 1 élément de base et 5 éléments télescopiques. Chaque élément télescopable indépendamment de l'autre. Système de télescope «Télématik» séquentiel rapide. Télescope: 35 ft à 157 ft.      |
| <b>Contrepoids:</b>         | Contrepoids de base 18740 lbs.   |
| <b>Circuit électrique:</b>  | Composants électriques et électroniques reliés entre eux par bus de données moderne.   |

## Équipement optionnel.

|                                    |  |
|------------------------------------|--|
| <b>Fléchette pliante:</b>          | 34 ft à 62 ft de long, pour montage à la flèche télescopique à 0°, 20° ou 40°.   |
| <b>Deuxième treuil:</b>            | Pour le levage avec 2 crochets ou pour le travail avec fléchette pliante lorsque le câble de levage principale reste mouflé. |
| <b>Contrepoids complémentaire:</b> | 16760 lbs pour une masse totale de 35500 lbs.  |
| <b>Entraînement 8 x 8:</b>         | Essieu 2 est entraîné additionnellement.   |

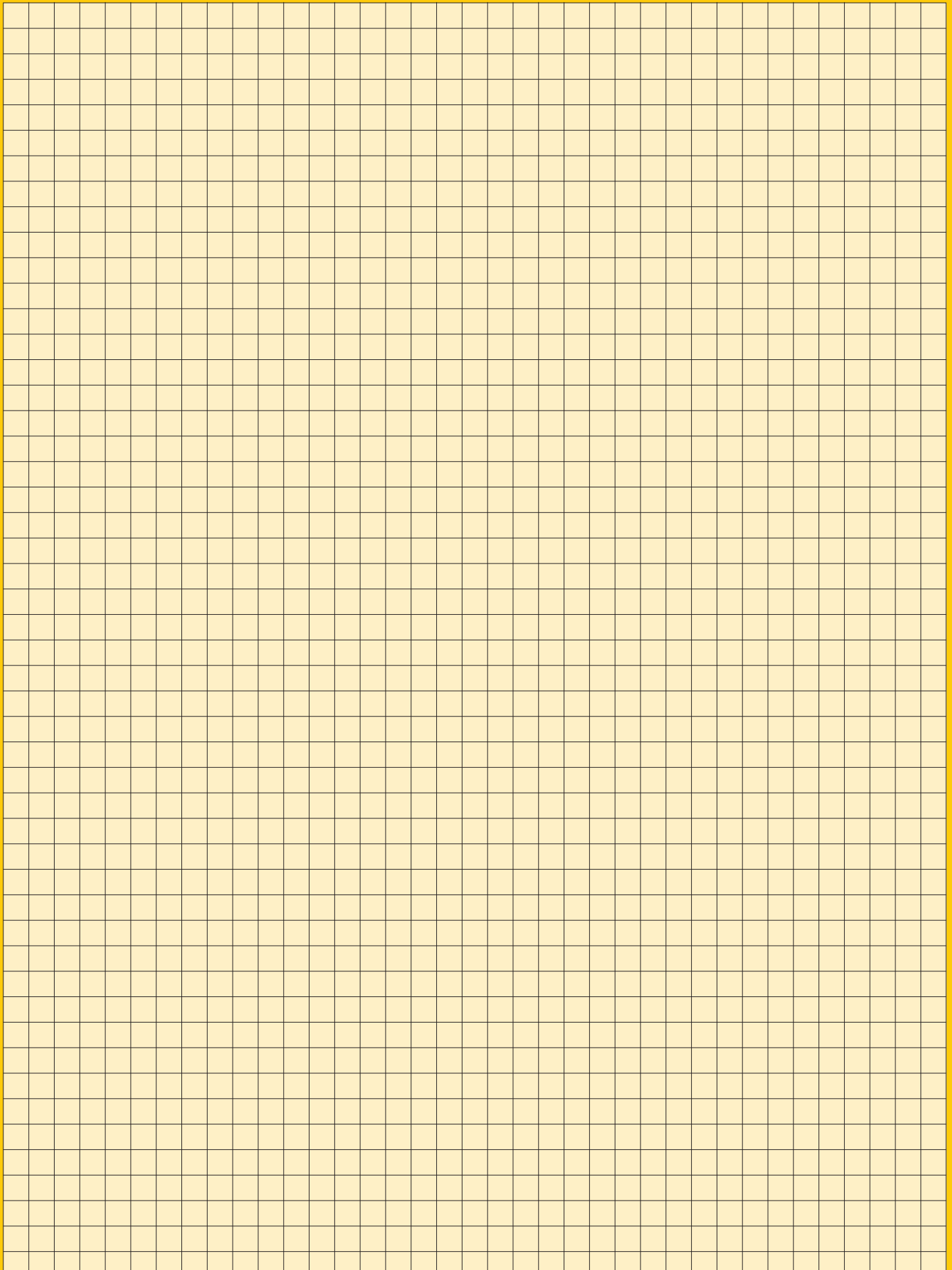
Autres équipements supplémentaires sur demande.



View thousands of Crane Specifications on [FreeCraneSpecs.com](http://FreeCraneSpecs.com)



View thousands of Crane Specifications on [FreeCraneSpecs.com](http://FreeCraneSpecs.com)



Subject to modification. / Sous réserve de modifications.

TP 273c. US. 1.99

**Please contact**

**Veillez prendre contact avec**

**LIEBHERR-WERK EHINGEN GMBH**

**D-89582 Ehingen/Donau, Telefon (0 73 91) 5 02-0, Telefax (0 73 91) 5 02-33 99**

**[www.liebherr.com](http://www.liebherr.com), E-mail: [info@lwe.liebherr.com](mailto:info@lwe.liebherr.com)**

CD-