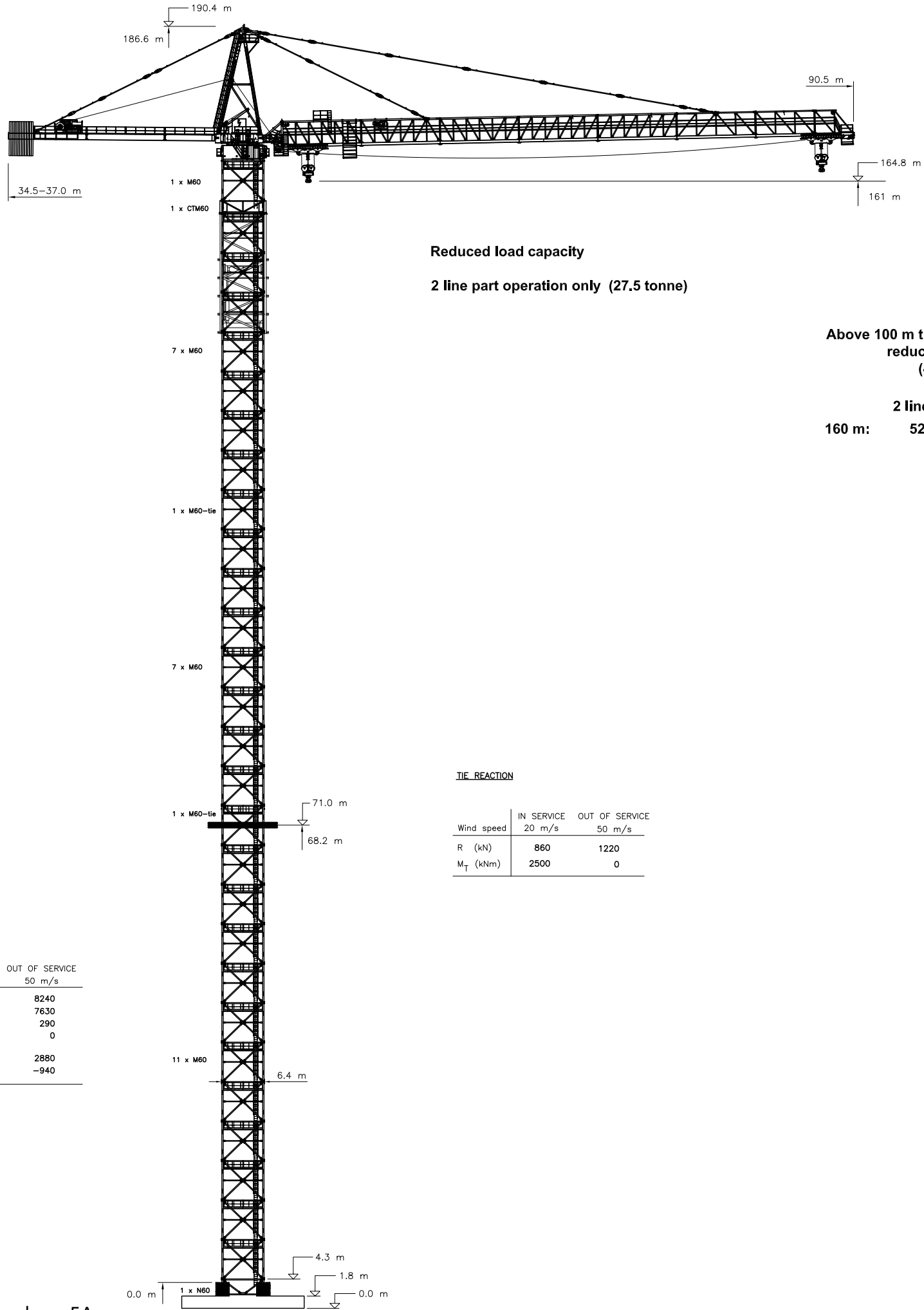


THIS DRAWING IS THE PROPERTY OF KRÖLL CRANES A/S AND MAY NOT BE REPRODUCED IN WHOLE OR PART WITHOUT PERMISSION.

K4000 TC1

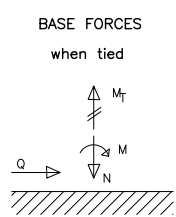
Phase 5A



Reduced load capacity
2 line part operation only (27.5 tonne)

Above 100 m the load chart must be reduced by the wire weight (4.4 kg/m per line part)

2 line parts
160 m: 525 kg



Wind speed	IN SERVICE 20 m/s	OUT OF SERVICE 50 m/s
M (kNm)	15650	8240
N (kN)	8000	7630
Q (kN)	680	290
M _T (kNm)	0	0
Corner compression (kN)	3850	2880
Corner tension (kN)	-160	-940

TIE REACTION

Wind speed	IN SERVICE	OUT OF SERVICE
	20 m/s	50 m/s
R (kN)	860	1220
M _T (kNm)	2500	0

PERFORMANCE

HOIST MOTOR : 200 kW	
2 PARTS	
0-4 t	0-120 m/min
4-8 t	0-88 m/min
8-16 t	0-56 m/min
16-24 t	0-36 m/min
4 PARTS	
0-8 t	0-60 m/min
8-16 t	0-44 m/min
16-32 t	0-28 m/min
32-53 t	0-18 m/min
8 PARTS	
0-16 t	0-30 m/min
16-32 t	0-22 m/min
32-64 t	0-14 m/min
64-110 t	0-9 m/min
0-50 t	0-60 m/min
50-110 t	0-30 m/min
0-110 t	0-0.4 rpm
0-110 t	N/A

3 x 600 V 60 Hz	CONTROL VOLTAGE 24 VDC - 220 VAC
---------------------------	--

KKC DOC No. : CAHE-KR-00AB751-50-000-00000C-VDZZZ-0005, phase 5A

KONST.: 120412 JL	PROJ.	KRANTYPE	STK.	SAML.	TEGN.
TEGN.: 120412 JL					
GODK.: 120412 JL					
ERSTATTER:	SKALA: 1:350	OVERF. AREAL: m ²	OVERFLADE-BEHANDLING:	MATR.:	
ERSTATTET AF:	TOTALVEGT: kg	ANT. TEGNING: 4 / 6	ANT. STYKL:		
OPRINDELSE:	TRANSPORTMÅL: m ³	TITEL: K4000-85 TC1			
KRÖLL CRANES A/S NORDKRANVEJ 2 · 3540 LYNGE · DENMARK PHONE: +45 48 187400 · FAX: +45 48 188807 www.krollcranes.com		TEGN. NR. C1-00.00090800-04			