



KOENIG CRANES

North America

K60

"Bringing Innovation to Construction"



This versatile unit is setting the global standard in self erecting tower cranes. Some of the key features are:

- Jib 131', clearance under hook 80'
- Capacity at inner limit 8,820 lbs
- Capacity at outer limit 2,535 lbs
- Can be luffed to 30°
- Powerlift option provides 20% more capacity when needed
- No concrete base required
- Footprint is only 13' x 13'
- Galvanized structure
- Site or generator powered
- Radio remote control
- Full set up in less than 1 day

Full details can be found at our website or by calling our toll free number. Dealer inquiries welcome

Koenig Cranes North America

2190 A-Carpenter Street
P.O. Box 2304, Abbotsford
BC Canada V2T 4X2

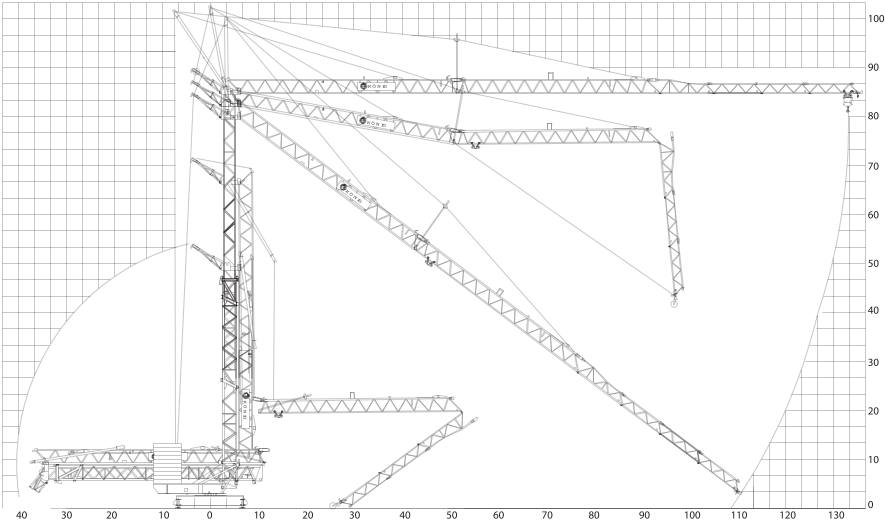
Tel 604-852-2192
Fax 604-852-4421
Email info@koenigcranes.com

www.koenigcranes.com

Toll Free 1-877-852-2192

K60 Technical Data

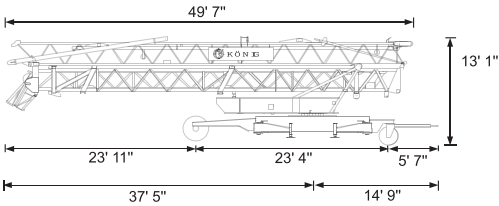
Erection



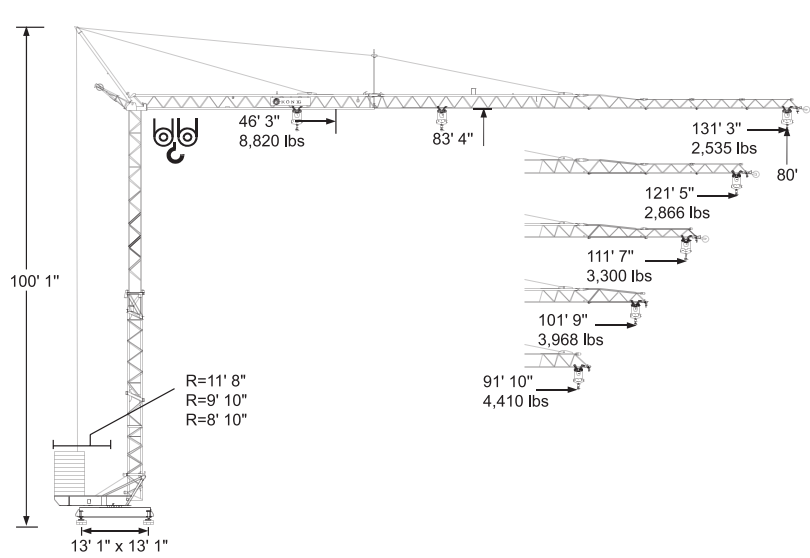
Weight

Dead weight approx.	18.7 T	Transport weight approx.	20.4 T
Counterweight	R= 7' 10"	30.8 T	
	R= 6' 7"	35.5 T	
	R= 5' 11"	39.4 T	

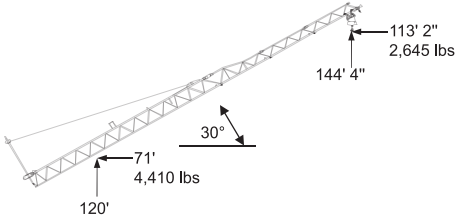
Transportation by Road



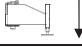
Rigging










Luffing







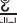





Reactions


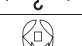
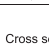
	In service	Out of service
Reactions	31.4 T	27.6 T


Radius and Capacity

Radius		max capacity		ft x lbs												
		T	ft	69	72	75	79	82	85	89	92	102	112	121	131	
131		2.2	83	4410	4410	4410	4410	4410	4189	4189	4012	3571	3197	2910	2645	
121		2.2	87	4410	4410	4410	4410	4410	4299	4123	3660	3285	2975			
112		2.2	90	4410	4410	4410	4410	4410	4410	4277	3814	3417				
102		2.2	95	4410	4410	4410	4410	4410	4410	4410	4410	4080				
92		2.2	92	4410	4410	4410	4410	4410	4410	4410	4410					
30°		Radius (ft)		60	62	65	69	71	74	77	79	88	96	108	113	
30°		Hook Height (ft)		113	115	116	118	120	121	123	125	131	135	139	144	

Radius		max capacity		ft x lbs												
		T	ft	46	52	59	66	72	79	85	92	102	112	121	131	
131		2.2														
		4.4	46	8820	7562	6570	5798	5181	4674	4255	3902	3461	3086	2800	2535	
121		2.2														
		4.4	47	8820	7760	6746	5952	5313	4806	4365	4012	3549	3175	2865		
		2.2														
112		4.4	49	8820	8069	7011	6195	5534	5004	4541	4167	3704	3307			
		2.2														
102		4.4	52	8820	8620	7518	6636	5930	5357	4872	4475	3968				
		2.2														
92		4.4	52	8820	8620	7518	6636	5930	5357	4872	4410					

Speeds

	Step	ft/min.	lbs	kW
	1	20 - 10	4400 - 8800	3.5
	2	78 - 39	4400 - 8800	9
	3	157 - 78	2425 - 4400	11
	1	65		1.1
	2	131		1.5
	0-0.75	U/min. sl./min. tr./min.		3.0

 Cross section of cable up to 5x10°	Operation voltage 400 V	Frequency 50 Hz	Power requirement 13,2 kVA (14,7 KW)
--	-------------------------	-----------------	--------------------------------------