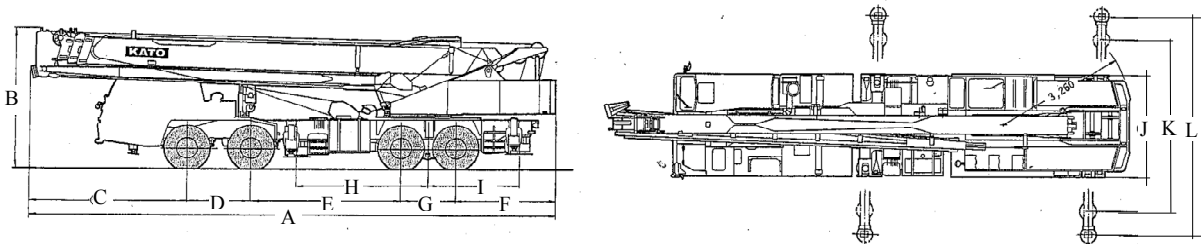




KATO

Kato NK-250-v Hydraulic Truck Mounted Crane

Specification



CARRIER	A	B	C	D	E	F	G	H	I	J	K	L
NK-250-v	12,450	3,400	3,760	1,520	3,530	2,340	1,300	3,100	2,150	2,490	4,100	6,100

Measurement: mm

- CRANE CAPACITY**
- Hydraulic boom length = 10.5m – 33m. Plus fly jib gives a total of 47.5m
 - Working radius from 2.5m – 27.5m
 - Maximum point height approximately 49m
 - Set up space = 6.8m x 12.5m and Tare weight 28100 kg

Examples of Lifting Capacity with Outriggers fully extended:

21 tonnes @ 4.5m operating radius on boom at 10.5m
9.1 tonnes @ 9.0m operating radius on boom at 21.7m
2.0 tonnes @ 20.0m operating radius on boom at 33.0m
1.0 tonnes @ 25.0m operating radius on boom at 41.7m