

MR-130R/MR-130RM



KATO



C02552
7.2009-3000(AT)2

KATO

CITYRANGE
MR-130R
MR-130RM
PREMIUM
Rougher



CITYRANGE

Premium Compact Continuing to Advance

- Equipped with most advanced 6-section super boom.
- Equipped with hydraulic joystick operating levers to reduce operation power.
- Equipped with colour touch panel-type new model ACS (Automatic Crane Stopper)
- Equipped with slewing automatic stop system.
- Equipped with new model common rail engine.
- Complies with 2007 Act on Regulation, Etc. of Emissions from Diesel Non-road Special Motor Vehicles.
- While the body remains compact, the engine output and torque have both been increased.
- With the new model transmission installed, the grade climbing capability is improved.
- Outriggers provide a choice between H -type, with 5 extension settings, or the X-type, with 4 extension settings.

MR-130R/MR-130RM
PREMIUM
Roughter



Complies with Act on Regulation, Etc. of Emissions from Non-road Special Motor Vehicles.



Ministry of Land, Infrastructure, Transport and Tourism designated low noise model

The MR-130R (MR-130RM) is known as the Roughter; its crane model name is the KRM-13H-II <13t lifting capacity> (KRM-13HM-II <49t lifting capacity>)



OPERABILITY

High rigidity 6-section super boom with minimal flex in vertical and horizontal axis.

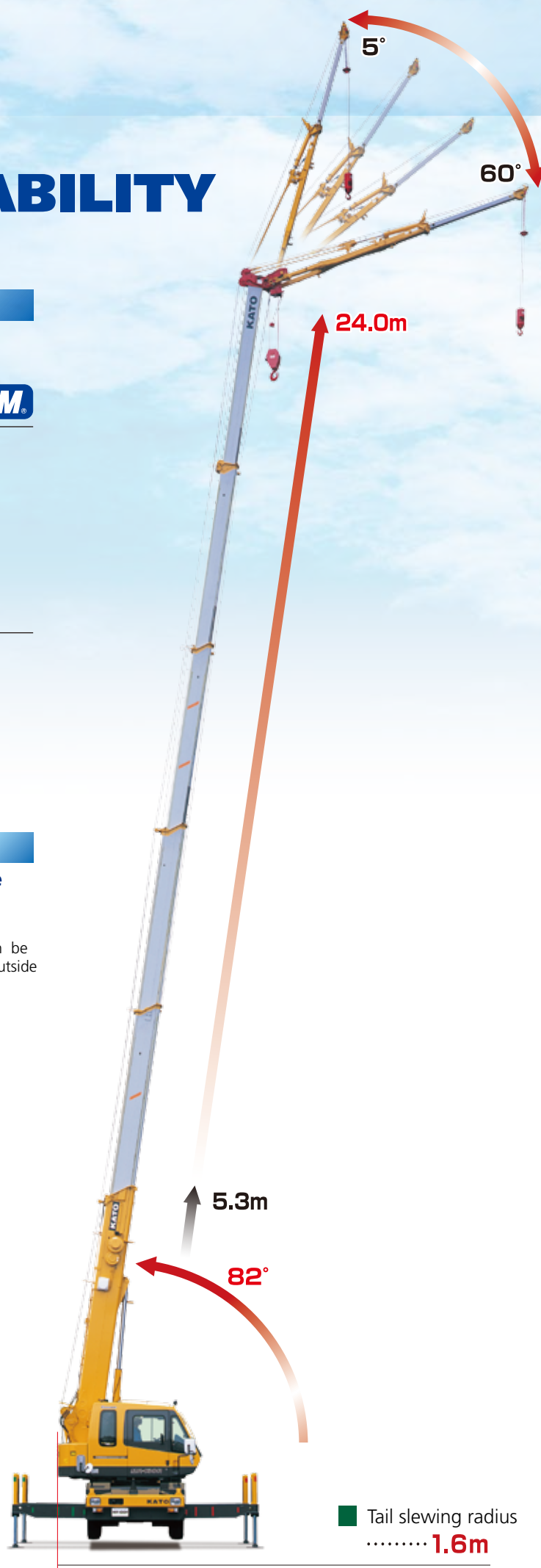
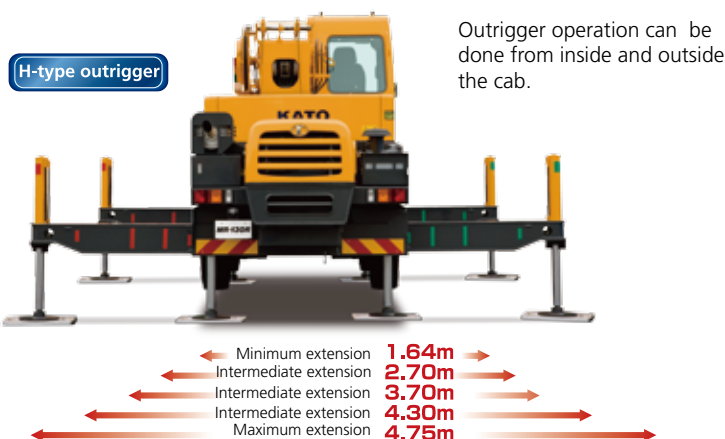
■ Boom lifting capacity **SUPERBOOM®**

- Maximum lifting capacity **13t×1.7m**
- Boom length **5.3m~24m**
- Maximum lifting height **24.8m** (Boom)
- Boom derricking angle **-7.5°~82°**

■ Power jib lifting capacity

- Maximum lifting capacity **1.6t×75°**
- Jib length **3.6m, 5.5m**
- Jib offset angle **5°~60°**
- Maximum lifting height **30.3m** (Power jib)

Increased operability with extensive intermediate extension!
Selection possible from 2 types of outrigger: H-type and X-type.



CABIN

MR-130R/MR-130RM
PREMIUM®
Rougher

■ New model ACS® (Automatic Crane Stopper) Compuload



Easy operation using the latest touch panel colour display.

- The hook travel distance is displayed, enabling use in a wide range of conditions.
- The working range limiting function can be set using values.

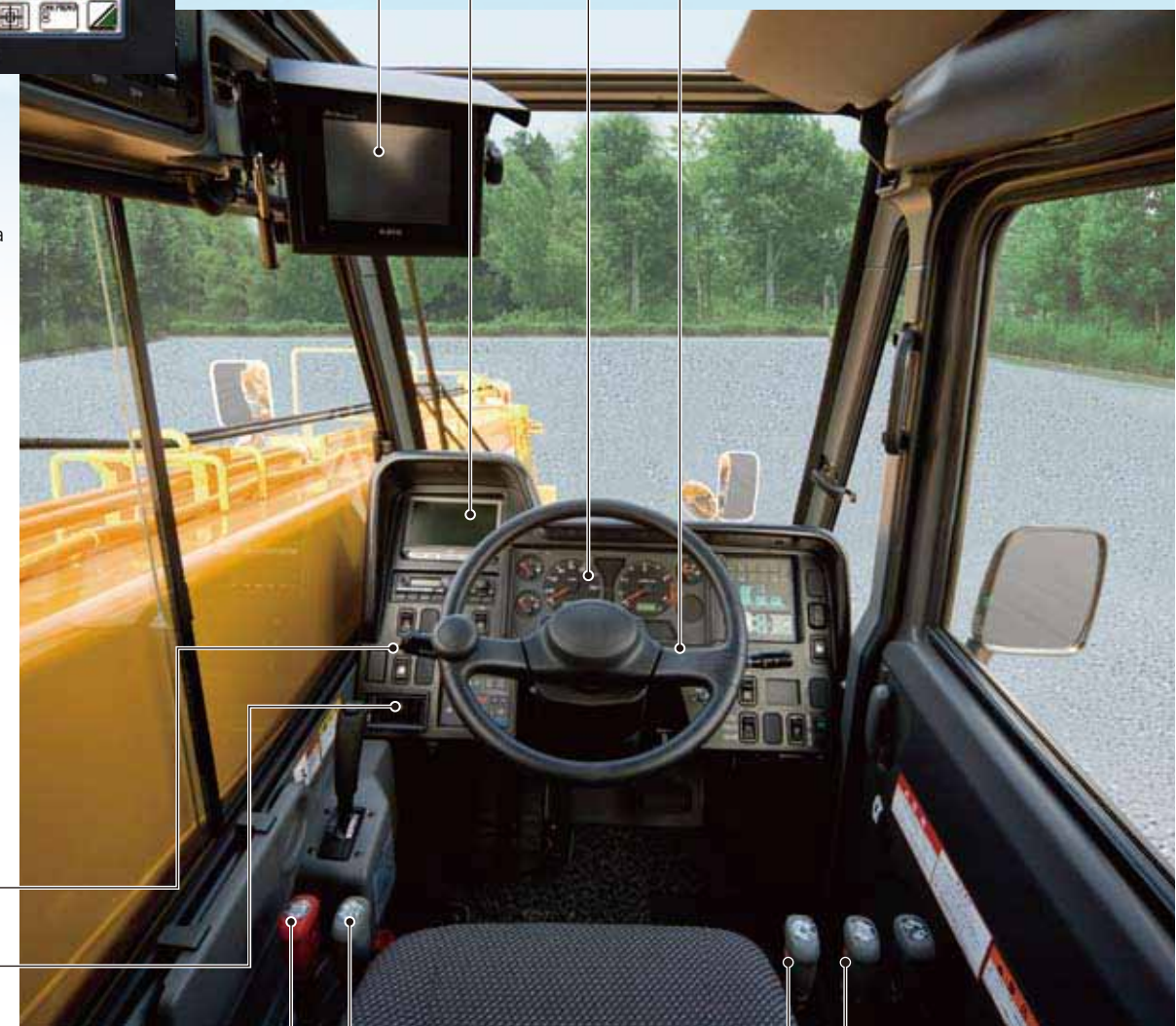
■ EQUIPPED WITH SLEWING AUTOMATIC STOP SYSTEM

■ Mirror storage

■ Air conditioner with front vent function

■ Hydraulic joystick operating levers

- Colour monitor (option)
- Cluster meter
- Idle volume

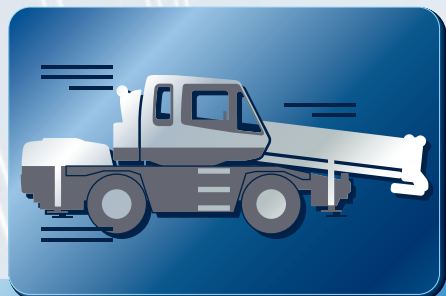


■ Hook travel distance setting button

■ HYDRAULIC JOYSTICK OPERATING LEVERS

Operation power is reduced, and operational efficiency is UP!
Changing to another company's lever type is also possible.





DRIVEABILITY

NEW MODEL COMMON RAIL ENGINE



Strict control of injection pressure and timing produces optimum fuel efficiency.

- Maximum output : **129kW/2,700min⁻¹**
- Maximum torque : **530N•m/1,600min⁻¹**

▲ Engine room layout taking into account ease of maintenance

Complies with Act on Regulation, Etc. of Emissions from Non-road Special Motor Vehicles.

Ministry of Land, Infrastructure, Transport and Tourism designated low noise model

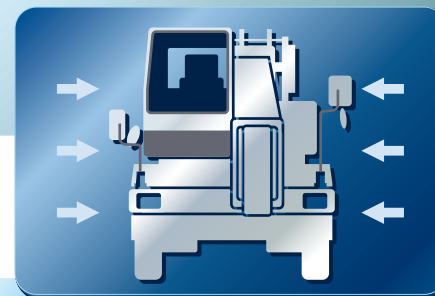
NEW MODEL TRANSMISSION

New model transmission with improved gear ratio increases grade ability!

- Grade ability increase : **0.56 (tan θ)**
(23% UP, comparison by Kato)

Wide angle driving visibility with feeling of freedom produced by slanted boom.

Good visibility to left and right is the MR's greatest feature. The slanted boom and rounded cabin shape together increase the feeling of freedom and improve all round visibility.



EQUIPMENT

MR-130R/MR-130RM
PREMIUM
Rougher

STRICT ATTENTION PAID TO ALL DETAILS FOR SAFETY

Left front view safety camera (option) monitor display shows left front view.



Photo is a composite photo with separate image inserted.

Left front view safety camera (option)

Rear view camera to improve safety when operating and driving. (option)

Rear view safety camera (Option)

Electronically stored mirror that can be stored separately.



OPERATIVE RELIABILITY SUPPORTED BY COMPREHENSIVE EQUIPMENT



Aluminium step as standard equipment (600×600mm)



Aluminium side step



Rear side step



Tool box