

MR-130R



KATO

CITYRANGE
MR-130R
PREMIUM
Roughter



NOTE : Illustrations may include optional equipment. KATO products and specifications are subject to improvements and changes without notice.



KATO

**QUALITY & EXPERIENCE
SINCE 1895**

KATO WORKS CO.,LTD.

9-37, Higashi-ohi 1-chome, Shinagawa-ku, Tokyo 140-0011 Japan.
Tel. : Head Office Tokyo(03)3458-1111
Overseas Marketing Department Tokyo(03)3458-1115
Fax. : Tokyo(03)3458-1163

CITYRANGE

Premium Compact Continuing to Advance

- Equipped with most advanced 6-section super boom.
- Equipped with hydraulic joystick operating levers to reduce operation power.
- Equipped with color touch panel-type new model ACS (Automatic Crane System)
- Equipped with slewing automatic stop system.
- Equipped with new model common rail engine.
- While the body remains compact, the engine output and torque have both been increased.
- With the new model transmission installed, the grade climbing capability is improved.
- Outriggers provide H-type, with 5 extension settings.



MR-130R
PREMIUM
Roughter



OPERABILITY

High rigidity 6-section super boom with minimal flex in vertical and horizontal axis.

■ Boom lifting capacity **SUPERBOOM**

- Maximum lifting capacity **13t×1.7m**
- Boom length **5.3m~24m**
- Boom derricking angle **-7.5°~82°**
- Maximum lifting height **24.8m** (Boom)

■ Power jib lifting capacity

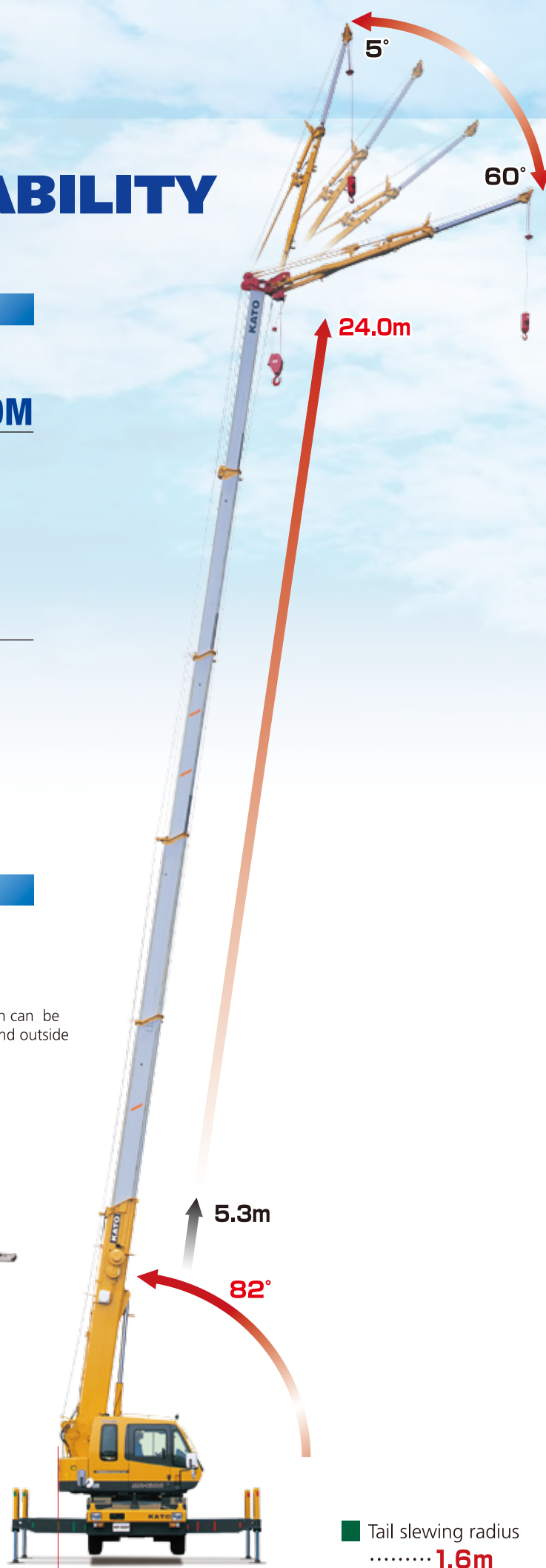
- Maximum lifting capacity **1.6t×75°**
- Jib length **3.6m, 5.5m**
- Jib offset angle **5°~60°**
- Maximum lifting height **30.3m** (Jib)

Increased operability with extensive intermediate extension!



Outrigger operation can be done from inside and outside the cab.

- ← Minimum extension **1.64m** →
- ← Intermediate extension **2.70m** →
- ← Intermediate extension **3.70m** →
- ← Intermediate extension **4.30m** →
- ← Maximum extension **4.75m** →



CABIN

MR-130R
PREMIUM
Rougher

■ New model ACS (Automatic Crane System) Compuload



Easy operation using the latest touch panel color display.

- The hook travel distance is displayed, enabling use in a wide range of conditions.
- The working range limiting function can be set using values.

■ EQUIPPED WITH SLEWING AUTOMATIC STOP SYSTEM

■ Mirror storage

■ Air conditioner with front vent function

■ Hydraulic joystick operating levers

- Color monitor (option)
- Cluster meter
- Idle volume

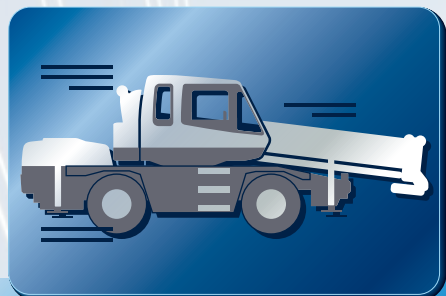


■ Hook travel distance setting button

■ HYDRAULIC JOYSTICK OPERATING LEVERS

Operation power is reduced, and operational efficiency is UP!





DRIVEABILITY

NEW MODEL COMMON RAIL ENGINE



▲ Engine room layout taking into account ease of maintenance

Strict control of injection pressure and timing produces optimum fuel efficiency.

- Maximum output : **129kW/2,700min⁻¹**
- Maximum torque : **530N·m/1,600min⁻¹**

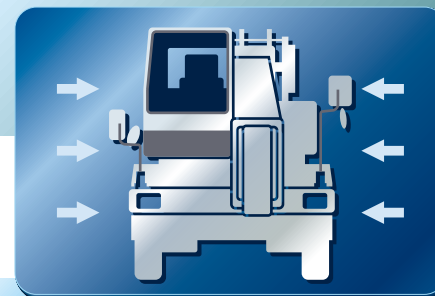
NEW MODEL TRANSMISSION

New model transmission with improved gear ratio increases grade ability!

- Grade ability increase : **0.56 (tan θ)**

Wide angle driving visibility with feeling of freedom produced by slanted boom.

Good visibility from left to right is the MR's greatest feature. The slanted and rounded shaped boom increase the feeling of freedom and improve all round visibility.



EQUIPMENT

MR-130R
PREMIUM
Roughter

STRICT ATTENTION PAID TO ALL DETAILS FOR SAFETY

Left front view safety camera (option)
monitor display shows left front view.



Left front view safety camera (option)

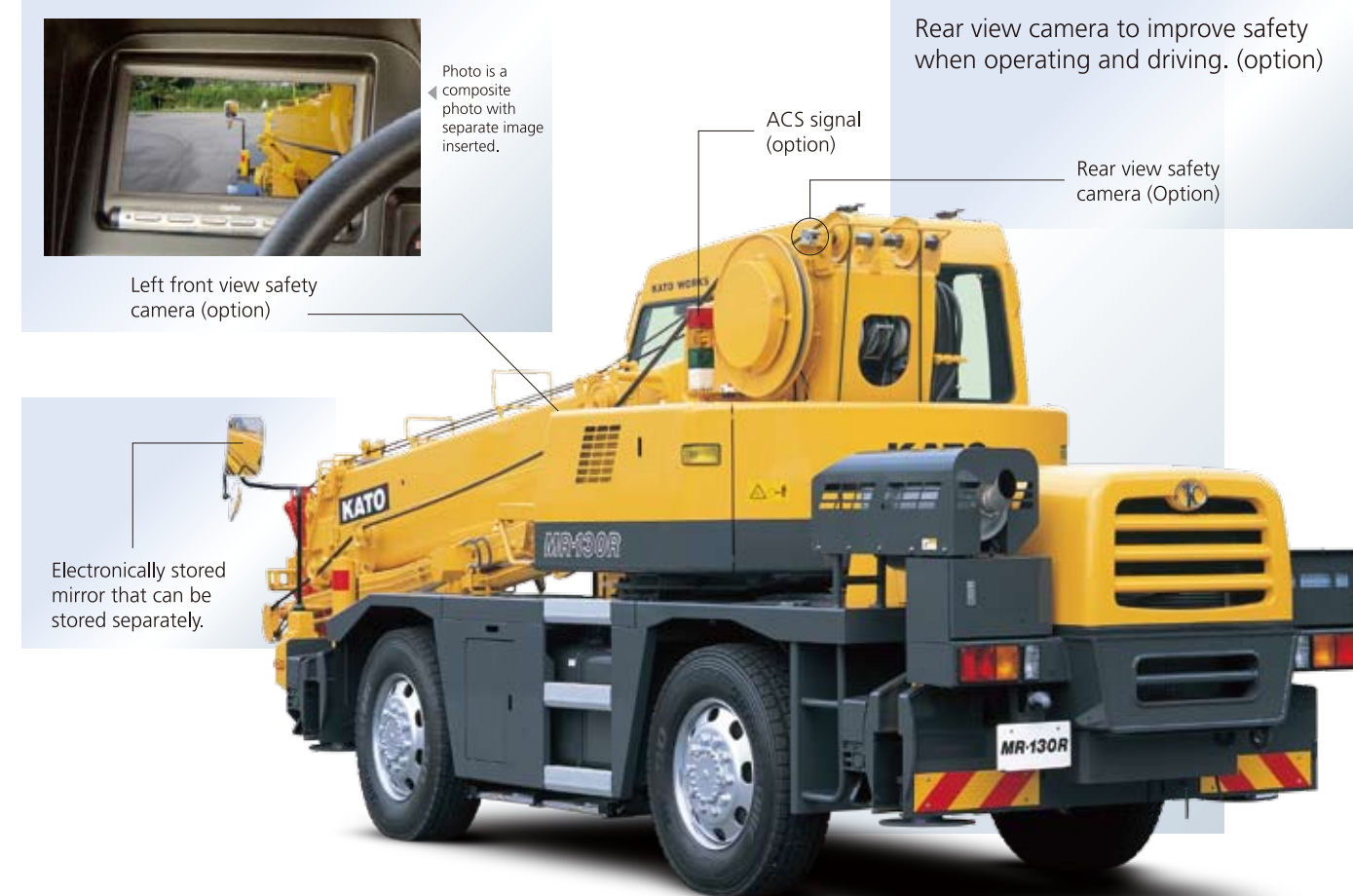
Photo is a composite photo with separate image inserted.

Rear view camera to improve safety when operating and driving. (option)

ACS signal (option)

Rear view safety camera (Option)

Electronically stored mirror that can be stored separately.



OPERATIVE RELIABILITY SUPPORTED BY COMPREHENSIVE EQUIPMENT



Aluminium sheet as standard equipment (600×600mm)



Aluminium side step



Rear side step



Tool box