



# KA-1300sL



<http://www.kato-works.co.jp>

- Study and follow the local regulation for driving position regarding mounting of Superstructure, Boom, Fly jib and Counter weight.
- Before you use the crane, study the instruction manual thoroughly and follow the instructions it contains.
- Some differences may arise between the machine delivered and the photographs in the catalog due to the country the crane will be used in or any added improvements.  
Note : The specification may be changed without notice.
- The actual colors of the body and interior may appear slightly different from those shown in this catalogue due to the limitations of photography and printing.

● Contact for enquiry:

**KATO**

QUALITY & EXPERIENCE  
SINCE 1895

**KATO WORKS CO.,LTD.**



Obtained authentication of International  
Specification ISO9001 for quality assurance.

**KA-1300sL**

9-37, Higashi-oh 1-chome, Shinagawa-ku, Tokyo, 140-0011, Japan / Tel.: Head Office: Tokyo (03) 3458-1111 Overseas Marketing Department: Tokyo (03) 3458-1115 / FAX: Tokyo (03) 3458-1163

**ALLTERR**  
**KA-1300sL**



**KATO**



**KA-1300sL**

**ALLTERR**



**The latest carrier based on over 4 decades of KATO's Carrier engineering history.**

- High efficient and intelligent Unit injector system maximizes the engine performance.
- The engine fully complies with Euro 3 exhaust gas emission.

**■ Max output**

● **390kW/1800min<sup>-1</sup>**

**■ Max torque**

● **2400N·m/1080min<sup>-1</sup>**

**High maneuverable 5-Axles all wheels steering system.**

- "Crab Steering Operation" or "Counter Steering Operation" can be easily selected by simple switch in the cabin for confined working site.
- **The Width of theoretical minimum intersecting aisle .....7.05m**  
(The traveling position in working site)

**Fully hydraulic suspension systems enable appropriate weight balance.**

**High capacity auxiliary brake system**

- "Hydraulic retarder, Engine exhaust brake & Engine decompression brake system are equipped, which are very powerful and useful especially at long downhill driving.
- Fully air controlled Disk brake is equipped on all wheels, offers easier maintenance and less maintenance cost & time.

Full size cabin  
Roomy and comfortable in addition to wide driving visibility. ▼



Convenient temporary sleeping bed is installed ▼



▲ The instruments for driver include touch-screen information display, which provide easy operation and intelligibly information.

The reliable engine is also EURO 3 emission control certified.  
The engine is installed in a well designed compartment which provides easier access for maintenance. ▼



**6-position outrigger length of the span setting.**

- ← Block on vertical: setting span of **3.4m** →
- ← Intermediate setting span of **4.4m** →
- ← Intermediate setting span of **5.4m** →
- ← Intermediate setting span of **6.4m** →
- ← Intermediate setting span of **7.4m** →
- ← Maximum setting span of **8.4m** →



## KA-1300SL



Fully powered 6 sections round shape Main Boom higher rigidity, lighter weight as well as flexible workability.

### ■ Main Boom performance & capacity

- Max. Lifting capacity..... **130t × 2.5m**
- Length of boom..... **11.8m~52.0m**
- Max. Lifting height (hook height)..... **53.1m**
- Max. Derrick up angle..... **85°**
- Max. Rated lifting capacity at full boom... **12.0t × 18m**

### Powerful & Rigid derrick cylinder.

- 2-speed (High / Low) selector is equipped.
- Fine operation to rapid operation just as operator wishes.

### Lower noise, high performance engine.

【Low noise type designated by Japanese Ministry of Land, Infrastructure, Transport and Tourism】

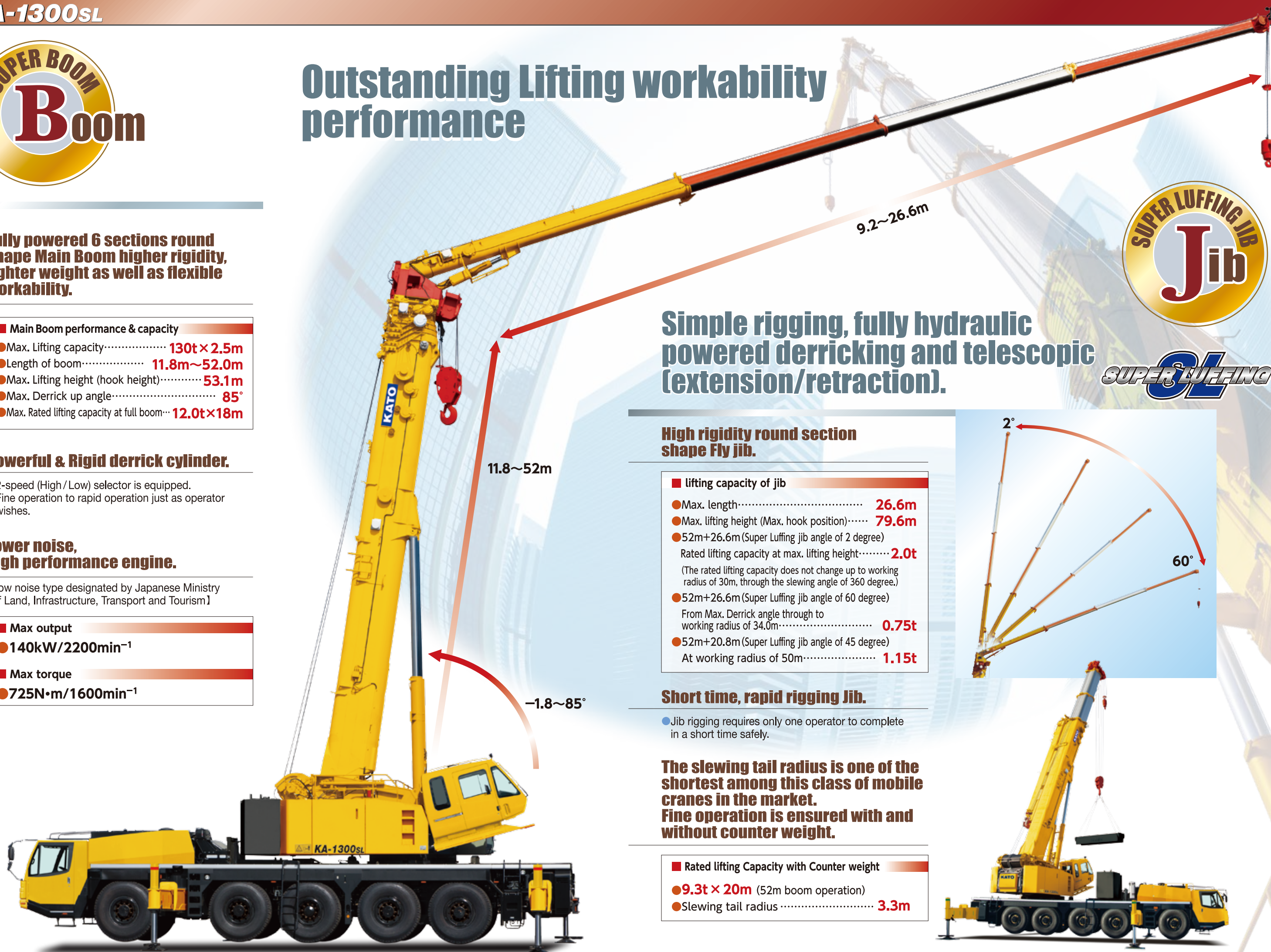
### ■ Max output

- **140kW/2200min<sup>-1</sup>**

### ■ Max torque

- **725N·m/1600min<sup>-1</sup>**

## Outstanding Lifting workability performance

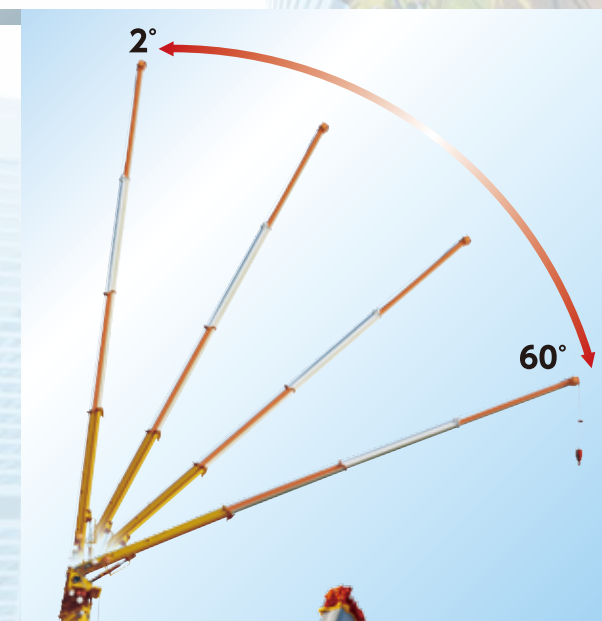


Simple rigging, fully hydraulic powered derricking and telescopic (extension/retraction).

### High rigidity round section shape Fly jib.

#### ■ lifting capacity of jib

- Max. length..... **26.6m**
- Max. lifting height (Max. hook position)..... **79.6m**
- 52m+26.6m (Super Luffing jib angle of 2 degree)  
Rated lifting capacity at max. lifting height..... **2.0t**  
(The rated lifting capacity does not change up to working radius of 30m, through the slewing angle of 360 degree.)
- 52m+26.6m (Super Luffing jib angle of 60 degree)  
From Max. Derrick angle through to working radius of 34.0m..... **0.75t**
- 52m+20.8m (Super Luffing jib angle of 45 degree)  
At working radius of 50m..... **1.15t**



### Short time, rapid rigging Jib.

- Jib rigging requires only one operator to complete in a short time safely.

The slewing tail radius is one of the shortest among this class of mobile cranes in the market. Fine operation is ensured with and without counter weight.

#### ■ Rated lifting Capacity with Counter weight

- **9.3t × 20m** (52m boom operation)
- Slewing tail radius ..... **3.3m**





**Safety, Comfortable & Advanced functions**



▲Cabin

**Wide visibility, easy control levers position provide comfortable operator's working environment.**

- Configuration of control levers are common to the KATO's Rough terrain crane. An operator of rough-terrain crane will like most his habitually used lever configuration.
- Hydraulic pilot type of operation control levers enable both smooth fine-operation and rapid operation.
- Panoramic wide visibility is provided with wide roof window.

**Equipped with tilting Operator's cabin**

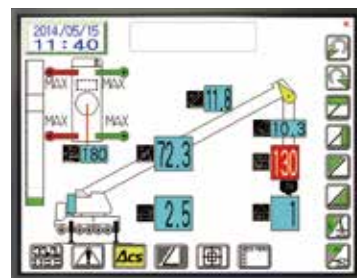
- The operator's cabin can be tilted from **0 to 15** degree. Very comfortable and healthy for the operator during high lifting height operation.

**KATO's latest Safe Load Indicator (ACS) is equipped.**

- Touch screen control color display panel with multi functional system.
- It enables to indicate Hook height to facilitate operator's task.
- Working range limiter can be set by the Crane's position as well as value of distance/angel.



▲Tilting cabin



▲Touch screen control panel type of color display

**Special steering modes**

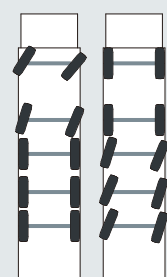
- Simple to select special steering modes by the rear steering selection control panel.



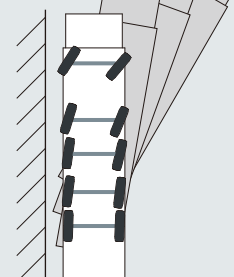
▲Crab steering



▲Counter steering



▲Independent manual rear steering



▲Restraint to rear swing out steering mood



**Equipments**

**Other equipments for the safety and the better workability.**



▲Color monitor display



▲Tachograph



▲Driver seat with Air suspension system



▲Projector and HID headlamp



▲Electric remote controlled side mirror



▲Behind view monitor camera



\*Traveling position in working site



▲Toolbox



▲Remote controlled searchlight



▲Anemometer (Optional)



▲Working lamp at outrigger



▲Ladder step