



CR-200Ri

PREMIUM
Roughter



<http://www.kato-works.co.jp>

- Before you use the crane, study the instruction manual thoroughly and follow the instructions it contains.
- Some differences may arise between the machine delivered and the photographs in the catalog due to the country the crane will be used in or any added improvements.
Note : The specification may be changed without notice.
- The actual colors of the body and interior may appear slightly different from those shown in this catalogue due to the limitations of photography and printing.

● Contact for enquiry:



KATO WORKS CO.,LTD.

QUALITY & EXPERIENCE
SINCE 1895



Obtained authentication of International Specification ISO9001 for quality assurance.

CR-200Ri

9-37, Higashi-ohi 1-chome, Shinagawa-ku, Tokyo, 140-0011, Japan / Tel.: Head Office: Tokyo (03) 3458-1111 Overseas Marketing Department: Tokyo (03) 3458-1115 / FAX: Tokyo (03) 3458-1163

CITYRANGE

CR-200Ri

PREMIUM
Roughter



KATO

CITYRANGE

CR-200Ri
PREMIUM
Roughter

Compact & Powerful

- GVW : less than 20t
- Maximum lifting capacity : 20t x 2.5m
- 6 sections SUPERBOOM
- 2 sections Power JIB
- ECO switch (Drive & Crane)
- Easy operation via Colorful touch panel
- New Cummins Diesel Engine (Tier 4 interim / Stage IIIB)
- New Functions of ACS for safety Improvement



Steady performance with the latest eco technology

Easy and safe JIB setting

JIB setting requires only 3 steps



▲ Drive mode

New adoption! Saving energy for driving and crane operation

- Perfect engine control makes reduction of the fuel consumption by using eco switch while driving and crane operation. Contribution to CO₂ reduction and saving energy.
- Compare to normal driving,

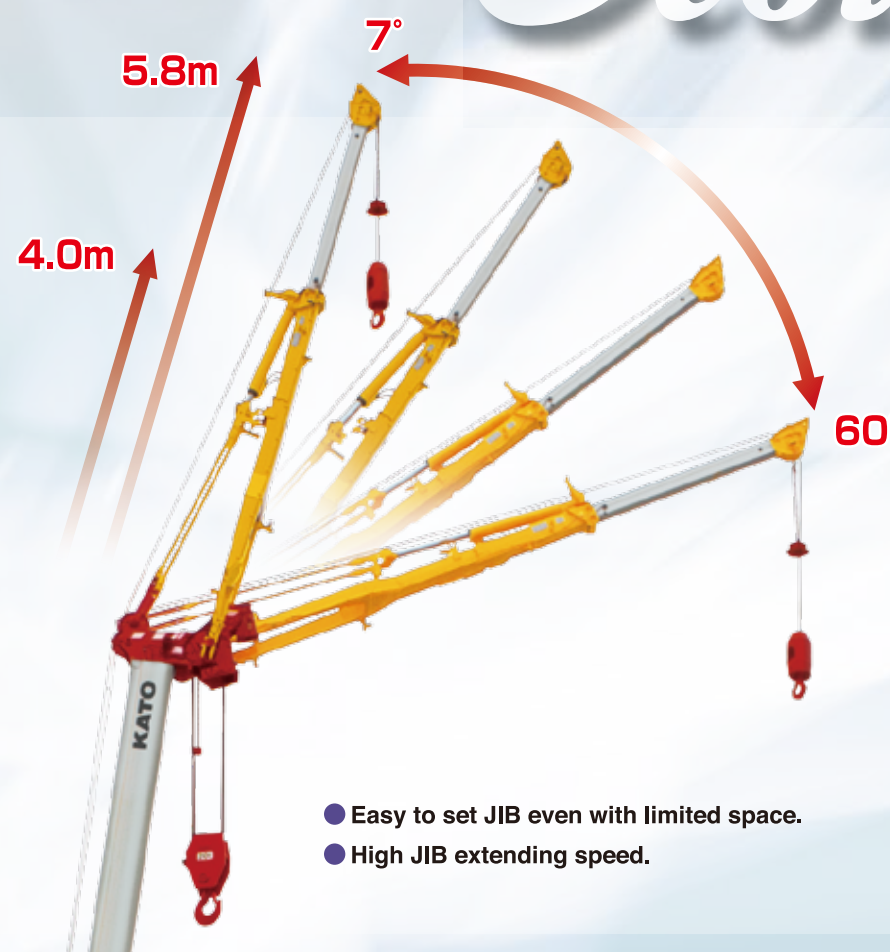
Energy saves about 10%.



▲ Crane operation mode

Ecology Intelligence

- Tail slewing radius **2.25m**
- **2.39m** on slide sheave



- Easy to set JIB even with limited space.
- High JIB extending speed.

High rigidity 6-sections SUPERBOOM with minimal flexure in vertical and horizontal axis

◆ Boom lifting capacity **SUPERBOOM**

- Maximum lifting capacity..... **20t×2.5m**
- Boom length..... **6.5m~28m**
- Boom derricking angle..... **-9.5°~83°**
- Maximum lifting height..... **29.1m (Boom)**

◆ Power jib lifting capacity

- Maximum lifting capacity..... **2.5t×75°**
- Jib length..... **4.0m, 5.8m**
- Jib offset angle..... **7°~60°**
- Maximum lifting height..... **34.8m (Jib)**

Increased operability with extensive intermediate extension!

- Outrigger can be operated from inside and outside the cab.



- Minimum extension **1.93m**
- Intermediate extension **3.20m**
- Intermediate extension **4.30m**
- Intermediate extension **4.80m**
- Maximum extension **5.40m**

Intelligent Cabin

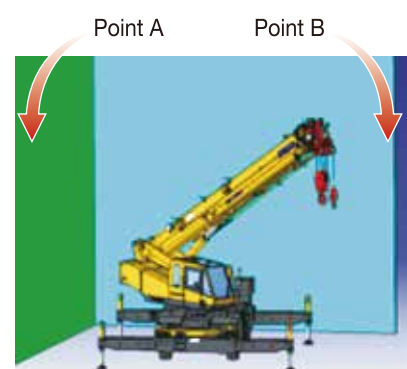
Provide wider view thanks to slanted boom

New ACS with colorful display



1. Working area limitation setting display

- The working area limitation setting restricts movement into the area beyond a line specified by points A and B, which in terms of the slewing angle and working radius.



2. Limiting function of load factor

- Load factor from 80% to 100% flexible setting (moment restriction)



● COR information display



Good left side visibility reduces collision risk

- Left front view safety camera



*photo is a composite photo with separate image inserted.

Progressive Parts



● Side marker lamp (option)

● Electrically retractable side view mirrors [with defroster (option)]



▲ Discharge head lamp



▲ Rear view safety camera (option)



● Storage box (option)



▲ Way side lamp (option)



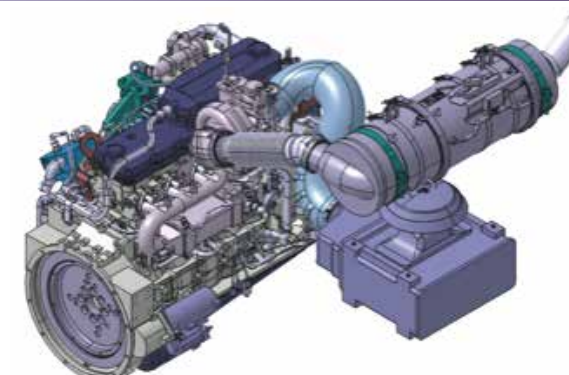
▲ Winch view camera (option)



▲ Left front view safety camera

Engine

Tier 4 interim / Stage IIIB



- Engine : CUMMINS QSB6.7-4A
(Electronically controlled Common-rail type)

- Piston displacement..... 6.690L
- Max Power..... 175kW / 2,300min⁻¹
- Max Torque..... 888N·m / 1,500min⁻¹