



## Model **G6-23A** TELEHANDLER

### Performance

#### Rated Capacity

At 24 in. (610 mm) load center,  
6,600 lb (2,994 kg)

**Capacity at Maximum Lift Height**  
5,700 lb (2,586 kg)

**Capacity at Maximum Forward Reach**  
2,975 lb (1,350 kg)

**Maximum Lift Height**  
22 ft 7 in. (6.88 m)

**Reach at Maximum Height**  
3 ft (91 cm)

**Maximum Forward Reach**  
12 ft 9 in. (3.89 m)

**Break-out Force with Standard Bucket**  
12,400 lbf (55,158 N)

**Towing Capacity**  
11,025 lb (5,001 kg)

**Carriage Rotation**  
140 degrees

**Travel Speed**  
First Gear: 4 mph (6.5 kmph)  
Second Gear: 19 mph (31 kmph)

**Gradeability**  
45%

**Gross Vehicle Weight**  
15,900 lb (7,210 kg)

### Standard Specifications

#### Engine

Make and Model	Deutz 2012
Fuel	Diesel
Max. Gross BHP	100 hp (74.9 kW)
Fuel Tank	27 gal. (102 L)
Engine Oil	2.6 gal. (9.8 L)
Coolant	4 gal. (15 L)

#### Hydraulic System

Gear Pump	24.8 gal./min (94 L/min) @2400 RPM
Hydraulic Reservoir	23 gal. (87 L)

#### Transmission

Hydrostatic  
Number of Gears

#### Axles

Full time planetary 4-wheel drive

#### Steering

Operator selectable 4-wheel circle,  
4-wheel crab, 2-wheel front

#### Parking Brakes

Wet multi disc.

#### Tires

405/70-24

#### Cab

Certified FOPS/ROPS structure

### Accessories & Options

#### Air Conditioning

#### Hydraulic Quick Switch

#### Special Paint

#### Light Group

Cab work lights—2 front, 2 rear  
Work lights on boom  
Rotating beacon

#### Road Light Package

#### Rotating Beacon

#### Fenders

#### Hitch

Simple, 2 bolt draw bar type

### Attachments

2/2

#### Standard Carriage

48 in. (1.22 m)

#### Sideshift Carriage

Includes pallet forks

#### Pallet Forks

2 x 5 x 48 in.  
(51 mm x 127 mm x 1.22 m)  
2 x 4 x 48 in.  
(51 mm x 102 mm x 1.22 m)  
2 x 6 x 60 in.  
(51 mm x 152 mm x 1.5 m)

#### Cubing Forks

2 x 2 x 48 in.  
(51 mm x 51 mm x 1.22 m)

#### Bucket

1.3 cu yd (1.0 m<sup>3</sup>)  
94 in. (2.39 m) wide

#### Light Material Bucket

2.6 cu yd (2.0 m<sup>3</sup>)  
94 in. (2.39 m) wide

#### 4-in-1 Bucket

1.3 cu yd (1.0 m<sup>3</sup>)  
94 in. (2.39 m) wide

#### Manure Bucket

1.3 cu yd (1.0 m<sup>3</sup>)  
94 in. (2.39 m) wide

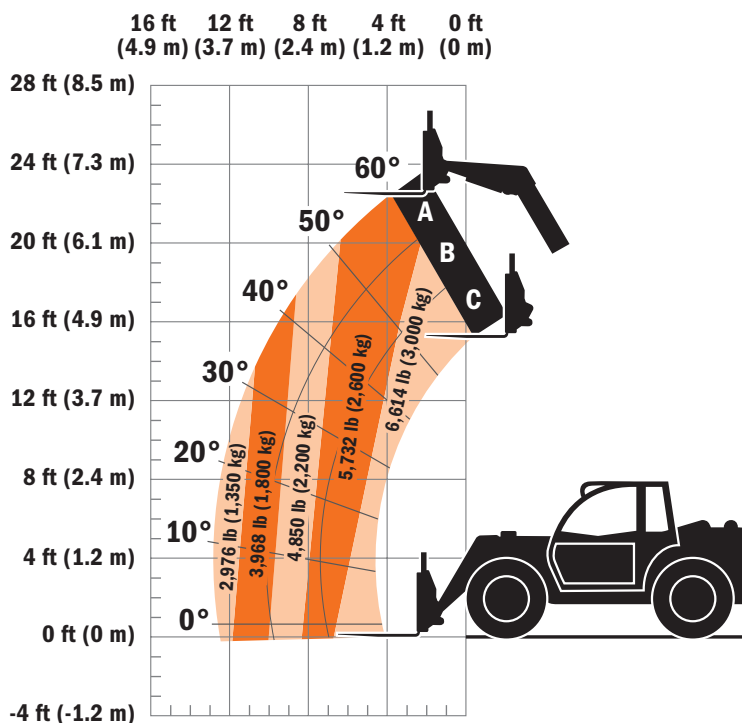
#### Truss Boom

11.75 ft (3.58 m)  
1,433 lb (650 kg) capacity

#### Fork Mounted Lift Hook



# Model G6-23A TELEHANDLER



## Dimensions

Length (less forks)	163 in. (4.14 m)
Length at Fork Holder Plate	195 in. (4.95 m)
Width	90.5 in. (2.30 m)
Width of Cab	35 in. (89 cm)
Track Width	74.5 in. (1.89 m)
Height	92.5 in. (2.35 m)
Wheelbase	114 in. (2.9 m)
Ground Clearance	8 in. (20 cm)
Turning Radius Over Tires	14 ft 5 in. (4.39 m)
Turning Radius at Fork	17 ft 8 in. (5.38 m)

## IMPORTANT

Rated lift capacities shown are with machine equipped with carriage and pallet forks. The machine must be level on a firm surface with undamaged, properly inflated tires. Machine specifications and stability are based on rated lift capacities at specific boom angles and boom lengths. (If specifications are critical, the proposed application should be discussed with your dealer.)

DO NOT exceed rated lift capacity loads, as unstable and dangerous machine conditions will result.

DO NOT tip the machine forward to determine the allowable load.

Use only JLG approved attachments with proper material handler model/attachment load capacity charts displayed in the operator's cab. OSHA requires all rough terrain forklift operators be trained according to OSHA 29 CFR 1910.178 (1).



**JLG Industries, Inc.**  
1 JLG Drive  
McConnellsburg, PA 17233-9533  
Telephone 717-485-5161  
Toll-free in US 877-JLG-LIFT  
Fax 717-485-6417  
[www.jlg.com](http://www.jlg.com)

Due to continuous product improvements, JLG Industries reserves the right to make specification and/or equipment changes without prior notification. This machine meets or exceeds ASME B56.6-2002 as originally manufactured for intended applications.

Form No.: SS-G6-23A-1205  
Part No.: 3132219  
Printed in USA