



## Model

# G5-19A

## TELEHANDLER



### Performance

#### Rated Capacity

At 24 in. (610 mm) load center,  
5,000 lb (2,268 kg)

**Capacity at Maximum Lift Height**  
4,850 lb (2,200 kg)

**Capacity at Maximum Forward Reach**  
2,205 lb (1,000 kg)

**Maximum Lift Height**  
19 ft (5.79 m)

**Reach at Maximum Height**  
2 ft 7.5 in. (80 cm)

**Maximum Forward Reach**  
10 ft 4 in. (3.15 m)

**Break-out Force with Standard Bucket**  
7,823 lbf (34,800 N)

**Towing Capacity**  
11,023 lb (5,000 kg)

**Carriage Rotation**  
140 degrees

**Travel Speed**  
First Gear: 4 mph (6.4 kmph)  
Second Gear: 20 mph (32 kmph)

**Gradeability**  
45%

**Gross Vehicle Weight**  
13,889 lb (6,300 kg)

### Standard Specifications

#### Engine

Make and Model	Deutz 2012
Fuel	Diesel
Fuel Tank	24 gal. (91 L)
Engine Oil	2.6 gal. (9.8 L)
Coolant	4 gal. (15 L)

#### Hydraulic System

Gear Pump	24.8 gal./min (94 L/min) @2200 RPM
Hydraulic Reservoir	17 gal. (64 L)

#### Transmission

Hydrostatic  
Number of Gears

#### Axles

Full time planetary 4-wheel drive

#### Steering

Operator selectable 4-wheel circle,  
4-wheel crab, 2-wheel front

#### Parking Brakes

Wet multi disc.

#### Tires

Standard: 405/70-20  
Optional: 405/70-20

#### Cab

Certified FOPS/ROPS structure

### Accessories & Options

#### Air Conditioning

#### Hydraulic Quick Switch

#### Special Paint

#### Light Group

Cab work lights—2 front, 2 rear  
Work lights on boom  
Rotating beacon

#### Road Light Package

#### Rotating Beacon

#### Fenders

#### Hitch

Simple, 2 bolt draw bar type

### Attachments

#### Standard Carriage

48 in. (1.22 m)

#### Sideshift Carriage

Includes pallet forks

#### Pallet Forks

2 x 5 x 48 in.  
(51 mm x 127 mm x 1.22 m)  
2 x 4 x 48 in.  
(51 mm x 102 mm x 1.22 m)  
2 x 6 x 60 in.  
(51 mm x 152 mm x 1.5 m)

#### Cubing Forks

2 x 2 x 48 in.  
(51 mm x 51 mm x 1.22 m)

#### Bucket

1.3 cu yd (1.0 m³)  
94 in. (2.39 m) wide

#### Light Material Bucket

2.6 cu yd (2.0 m³)  
94 in. (2.39 m) wide

#### 4-in-1 Bucket

1.3 cu yd (1.0 m³)  
94 in. (2.39 m) wide

#### Manure Bucket

1.3 cu yd (1.0 m³)  
94 in. (2.39 m) wide

#### Truss Boom

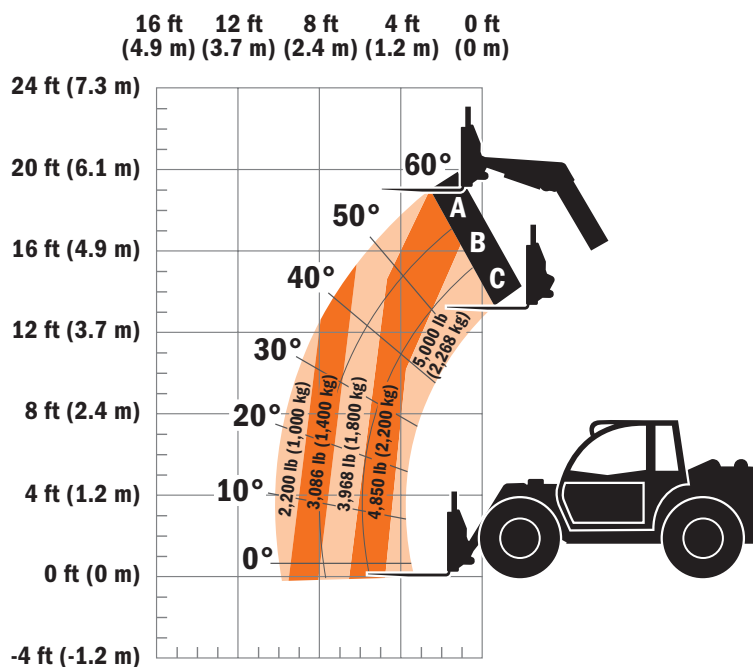
11.75 ft (3.58 m)  
1,433 lb (650 kg) capacity

#### Fork Mounted Lift Hook

2/2



# Model G5-19A TELEHANDLER



## Dimensions

Length (less forks)	150 in. (3.81 m)
Length at Fork Holder Plate	173 in. (4.39 m)
Width	80 in. (2.03 m)
Width of Cab	35 in. (89 cm)
Track Width	65 in. (1.65 m)
Height	86 in. (2.18 m)
Wheelbase	106 in. (2.69 m)
Ground Clearance	13 in. (33 cm)
Turning Radius Over Tires	12 ft 10.5 in. (3.92 m)
Turning Radius at Fork	16 ft 9 in. (5.11 m)

## IMPORTANT

Rated lift capacities shown are with machine equipped with carriage and pallet forks. The machine must be level on a firm surface with undamaged, properly inflated tires. Machine specifications and stability are based on rated lift capacities at specific boom angles and boom lengths. (If specifications are critical, the proposed application should be discussed with your dealer.)

DO NOT exceed rated lift capacity loads, as unstable and dangerous machine conditions will result.

DO NOT tip the machine forward to determine the allowable load.

Use only JLG approved attachments with proper material handler model/attachment load capacity charts displayed in the operator's cab.



**JLG Industries, Inc.**  
1 JLG Drive  
McConnellsburg, PA 17233-9533  
Telephone 717-485-5161  
Toll-free in US 877-JLG-LIFT  
Fax 717-485-6417  
[www.jlg.com](http://www.jlg.com)

*Due to continuous product improvements, JLG Industries reserves the right to make specification and/or equipment changes without prior notification. This machine meets or exceeds EN 1459-1998 as originally manufactured for intended applications.*

Form No.: SS-G5-19A-1205  
Part No.: 3132218  
Printed in USA