



PICK ACE

IHI

Telescopic Boom Mini Crane

*2.93 metric tons
maximum
lifting capacity*

Comply with worldwide standards:
ISO4305-1991
DIN 15019.2 Crane Ratings
BS1757 1986



- Zero tail swing within crawler width
- 360-degree slewing
- 9.50 meters maximum horizontal reach
- 10.0 meters maximum boom length
- 10.9 meters maximum lift above ground

IHI Construction Machinery Limited

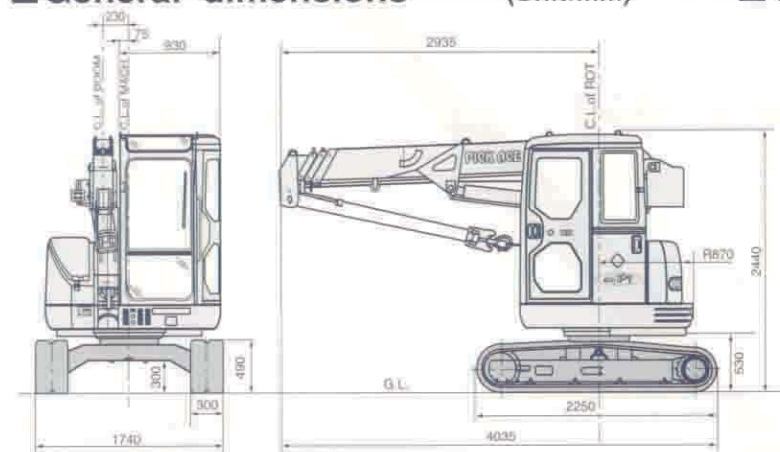


PICK ACE

CCH30T

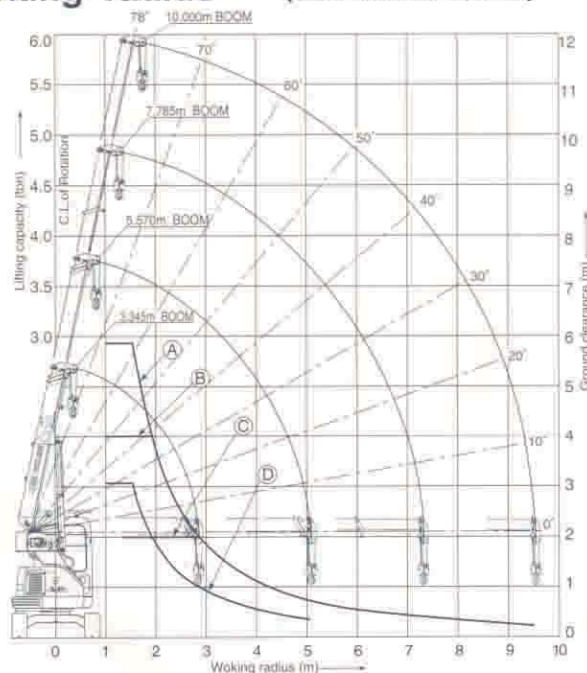
General dimensions

(Unit:mm)



Working radius

(3.34~10.0m Boom)



[Note]

Working radius means a horizontal distance from the center line of rotation to the hook center. Working radius shown actual radius which considered deformation by lifted load.

CCH30T overall rated load (3.345m~10.0m/4-stage boom)

| Working radius (m) | In static lifting | | | In travel lifting |
|--------------------|-------------------|-----------------|------------------|-------------------|
| | (A) 3.345~5.570 | (B) 5.570~7.785 | (C) 7.785~10.000 | (D) 3.345~5.570 |
| 1.55 | 2930 | 2000 | 1000 | 1530 |
| 1.70 | 2550 | 2000×1.92m | 1000 | 1280 |
| 2.00 | 1860 | 1860 | 1000 | 930 |
| 2.30 | 1450 | 1450 | 1000 | 730 |
| 2.50 | 1250 | 1250 | 1000×2.85m | 630 |
| 3.00 | 920 | 920 | 920 | 460 |
| 3.50 | 710 | 710 | 710 | 360 |
| 4.00 | 560 | 560 | 560 | 280 |
| 4.50 | 450 | 450 | 450 | 230 |
| 5.00 | 370 | 370 | 370 | 190 |
| 5.50 | 360×5.07m | 310 | 310 | 180×5.07m |
| 6.00 | | 270 | 270 | |
| 6.50 | | 240 | 240 | |
| 7.00 | | 210 | 210 | |
| 8.00 | | 200×7.28m | 170 | |
| 9.00 | | | 130 | |
| 9.50 | | | 110 | |

(Unit : kg)

Notes

- All rated loads are in accordance with the requirements of Clause 9, stability of B.S.1757,1986 with wind forces to tables 5(a) and 6(a) of B.S.2573, Part1:1989. The machine must be operated on the firm level ground. Rated loads are the value at any point of 360° around the machine.
- The weight of hook block and other lifting devices must be considered to be a part of the load. 2.93 ton hook (4 parts of line): 30 kgs.
- The lifting load during traveling state is the load where it is statically lifted and then traveled on a firm, level ground. In this case the load should be held in a position close to the ground without rapid start, rapid stop, spin turn, and other similar operations.
- While a load is lifted and the machine is traveled, do not conduct crane operations such as load raising/lowering operations, boom raising/lowering operations, and boom extension/retraction operations.
- The load applied is limited depending on the number of ropes reeved as follows:
4 parts of line: Up to 2.93 tons. 3 parts of line: Up to 2.25 tons.
2 parts of line: Up to 1.50 tons. 1 part of line: Up to 0.75 ton.
- Wire rope specification
Main hoist: $\phi 8$ mm Guaranteed breaking strength of 4.3 kN(4.39 tons)
7×7+6×WS(26)

Specifications

Performance

| | |
|--------------------------------------|-------------------------------|
| Boom length | 3.345m~10.0m four-stage boom |
| Max. lifting load×working radius | 2.93t×1.55m |
| Max. lift above ground level of hook | 10.9m |
| Load hoisting/lowering rope speed | 72m/min (4th layer) |
| Boom hoist speed | 10.0 sec/10° ~78° |
| Boom extension speed | 14.0 sec/3.345m~10.0m |
| Swing speed | 2.1min ⁻¹ (2.1rpm) |
| Traveling speed | High 3.8km/hr, Low 2.5km/hr |

Weight

| | |
|---------------------------------|--|
| Total equipment mass | 3900kg with 3.345m~10.0m four-stage boom |
| Average ground bearing pressure | Approx. 35kpa (0.36kgf/cm ²) |

Engine

| | |
|--------------------|---|
| Make | Yanmar Diesel Co.,Ltd. |
| Model | 3TNE84-IKA |
| Type | 4cycle, water cooled, overhead valve, direct injection type |
| Rated output | 19.7kW/2400min ⁻¹ (26.8PS/2400rpm) |
| Max. torque | 98Nm/1500min ⁻¹ (10kgf·m/1500rpm) |
| Displacement | 1496cc |
| Fuel tank capacity | 30lit |
| Battery | 12V-55AH |

Hoist device (Main/Aux.)

| | |
|-------------------|---|
| Hydraulic motor | Axial piston type |
| Reduction gear | Spur gear two-stage reduction |
| Hoist drum | Grooved type |
| Brake | Wet type multi-disk automatic brake |
| Hoist rope | Rope length: $\phi 8$ mm × 63m |
| Boom hoist device | Double acting direct-push type hydraulic cylinder |

Swing device

| | |
|-----------------|---|
| Hydraulic motor | Fixed displacement internal gear type |
| Reduction gear | Spur gear (internal gear) one-stage reduction |
| Swing bearing | Single ball bearing type |
| Brake | Wet type multi-disk brake (with brake valve) |

Travel unit

| | |
|-----------------|--|
| Hydraulic motor | Variable displacement plunger |
| Reduction gear | Spur gear one-stage + cycloidal gear one-stage reduction |
| Shoe | Rubber crawler (300mm) |

Driving pump

| | |
|---------------------|-------------|
| Axial piston pump 2 | Gear pump 2 |
|---------------------|-------------|

Safety device

| | |
|---|--|
| Swing brake/ Overhoisting prevention device/ Boom angle indicator/ Hook wire sling stopper/ Gate lock lever/ Hydraulic safety valve/ Counterbalance valve | |
|---|--|

from actual objects.
ns.



Printed in Japan
IK1210B9904T110