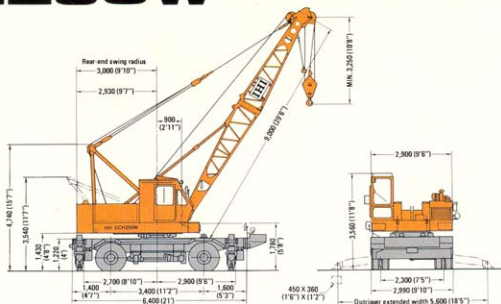




CCH250W

(unit: mm)



Specifications

Max. lifting capacity x working radius	27.5 t x 3.2 m
Boom length	Standard 9m (optional boom: 10m)
	Maximum 30m (optional boom: 31m)
Line speed	Load hoisting & lowering High 80m/min., low 40m/min.
	Boom hoisting & lowering 55m/min. (4th layer of drum)
Swing speed	4.0 rpm
Travel speed	23km/h
Drive	4 x 2 (rear wheel drive)
Min. turning radius	8m
Gradeability	28% (16°)
Engine rated output	150 PS/2,100 rpm (HINO H06C-T)
Total operating weight	28,600 kg (with standard boom)
Overall length at travelling	13,400 (44'0")
Overall width at travelling	2,990mm (9'10")
Overall height at travelling	3,560mm (11'8")
Outrigger	X-type
Tire size	11-00-20-16PR(I) x 4 For front and Rear axes

* Line speed will be changed due to load factor.

Note:

- All rated lifting loads are based on the machine being on a firm, level and uniformly supporting surface.
- The weight of the hook block, slings or any lifting attachment must be considered as part of the load.
27.5t hook block 330kg
- All rated lifting loads with outriggers are based on the outriggers being fully extended.
Machine must be level and fully supported by outriggers.
- All rated lifting loads free-on-wheel are based on proper tire inflation and condition, freely suspended static loads with no allowances for unknown conditions such as operating speeds and others.
- Load lifting data.

Maximum lifting load (tons)	Parts of line
5.5t	1
11.0t	2
16.5t	3
22.0t	4
27.5t	5

Rated lifting loads [with outriggers, through 360°] (unit: metric tons)

Working radius (m)	Boom length (m)							
	9	12	15	18	21	24	27	30
3.2	27.5							
3.5	25.8							
4.0	23.5	23.0	23.0					
4.5	21.4	20.9	20.8					
5.0	19.5	19.0	18.8	18.0	5.5mX16.0			
6.0	16.0	15.6	15.5	15.3	15.1	14.5		
7.0	13.5	13.4	13.3	13.2	13.1	13.0	12.9	
8.0	11.0	10.9	10.8	10.7	10.6	10.5	10.4	10.3
9.0		9.2	9.1	9.0	8.9	8.8	8.7	8.6
10.0		7.8	7.7	7.6	7.5	7.4	7.3	7.2
12.0			5.8	5.7	5.6	5.5	5.4	5.3
14.0			4.6	4.5	4.4	4.3	4.2	4.1
16.0				3.7	3.6	3.5	3.4	3.3
18.0					3.0	2.9	2.8	2.7
20.0						2.5	2.4	2.3
22.0							2.0	1.9
24.0							1.7	1.6
26.0								1.4
27.0								1.3

[free-on-wheel, through 360°]

(unit: metric tons)

Working radius (m)	Boom length (m)							
	9	12	15	18	21	24	27	30
3.5	11.25	10.20						
4.0	9.15	9.10	9.05					
4.5	7.70	7.65	7.60	7.55				
5.0	6.65	6.60	6.55	6.50	6.45	5.5mX5.55		
6.0	5.15	5.10	5.05	5.00	4.95	4.90	4.85	
7.0	4.25	4.15	4.10	4.05	4.00	3.95	3.90	3.85
8.0	3.50	3.45	3.40	3.35	3.30	3.25	3.20	3.15
9.0		2.90	2.85	2.80	2.75	2.70	2.65	2.60
10.0		2.55	2.45	2.40	2.35	2.30	2.25	2.20
12.0			1.90	1.85	1.80	1.75	1.70	1.65
14.0			1.50	1.45	1.40	1.35	1.30	1.25
16.0				1.15	1.10	1.05	1.00	0.95

[carrying, through 360°] (unit: metric tons)

Working radius (m)	Boom length (m)			
	9	12	15	18
3.5	5.65	5.60		
4.0	4.60	4.55	4.50	
4.5	3.85	3.80	3.75	3.70
5.0	3.30	3.25	3.20	3.15
6.0	2.60	2.55	2.50	2.45
7.0	2.10	2.05	2.00	1.95
8.0	1.75	1.70	1.65	1.60
9.0		1.45	1.40	1.35
10.0		1.30	1.25	1.20

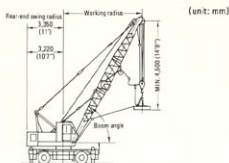
Note:

- Proper tire air pressure is 7.0kgf/cm².
- Travelling speed must be slower than 5.0km/h.
- Axle-locks must be locked.
- The lifting height of load should be kept lower and with no allowance for swing.



View thousands of Crane Specifications

Lifting magnet (option)



(unit: mm)

Rated lifting loads [with outriggers, through 360°]

(unit: metric tons)

Working radius (m)	3.2	3.5	4	4.5	5	6	7	8	9	10	12	14	16
Boom length (m)	9	24.7	23.3	21.1	19.3	17.5	14.4	12.1	9.9				
12			20.7	18.8	17.1	14.0	12.0	9.8	8.3	7.0			
15				20.7	18.7	16.9	13.9	11.9	9.7	8.2	6.9	5.1	4.1
18					16.2	13.8	11.8	9.6	8.1	6.8	5.0	4.0	3.3

Note: 1. The weight of hook block, magnet, slings or any lifting attachment must be considered as part of the load.
27.5t hook block 0.33t
15.0t hook block 0.30t

2. Maximum allowable boom length is 18m with outriggers fully extended.
3. Lifting magnet work free-on-wheel is not allowed.
4. The rear part of the machine will be changed from that of crane specifications.

Specifications

Magnet size	1,500mm dia.
Max. lifting capacity x working radius	24.7t x 3.2m
Boom length	Standard 9m (optional boom: 10m) Maximum 18m (optional boom: 19m)
* Line speed	Load hoisting & lowering High 88m/min., low 34m/min. Boom hoisting & lowering 47m/min. (4th layer of drum)
Swing speed	3.4 rpm
Rated engine revolution	1,800 rpm

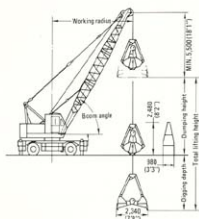
* Line speed will be changed due to load factor.

Magnet specifications

Diameter	1,500mm d.a.
Weight	2,700kg
Voltage	DC-220V
Generator output	16.5kW (50% ED)
Lifting loads	Pig iron 1,300 ~ 1,900kg General scrap 1,200 ~ 1,900kg Punched scrap 550 ~ 900kg

Clamshell (option)

(unit: mm)



Specifications

Bucket capacity	0.8m³ GP, 0.6m³ HD, 1.0m³ WR, 1.25m³ WR
Max. lifting capacity	5.0t (Note: 1)
Boom length	9 ~ 18m (optional boom: 10 ~ 19m)
Max. lifting height	37.0m (digging depth + dumping height)
Tagline	Hydraulic type
* Line speed	Load hoisting & lowering High 80m/min., low 40m/min. Bucket opening & closing 55m/min. (4th layer of drum)
Swing speed	4.0 rpm

* Line speed will be changed due to load factor.

Clamshell bucket specifications

Classification	Model	Capacity (m³)	Weight (t)	Parts of line (bucket opening & closing)	Purpose
Standard	GP	0.8	2.1	6	General purpose
Option	HD	0.6	3.0		Heavy duty work
Option	WR	1.0	2.0		Wide rehandling
Option	WR	1.25	1.6		

Working range and allowable loads [with outriggers, through 360°]

Boom length (m)	9				12				15				18			
Working radius (m)	35°	45°	55°	65°	35°	45°	55°	65°	35°	45°	55°	65°	35°	45°	55°	65°
Rated lifting load (t)	8.4	7.5	6.3	5.0	10.9	9.6	8.0	6.2	13.3	11.7	9.7	7.5	15.8	13.8	11.5	8.8
Max. dumping height (m)	5.0	5.0	5.0	5.0	5.0	5.0	5.0	5.0	4.4	5.0	5.0	5.0	3.3	4.1	5.0	5.0
Max. digging depth (m)	1.4	2.6	3.7	4.5	3.1	4.8	6.2	7.2	4.8	6.9	8.6	9.9	6.5	9.0	11.2	12.7
	36	35	33	32	31	30	29	27	25	24	24	22	20	20	18	18

Note: 1. Maximum weight of clamshell bucket and contents must not exceed 5 tons.
2. Maximum allowable boom length is 18m with outriggers fully extended.
3. Clamshell bucket work free-on-wheel is not allowed.

4. Maximum dumping height shown is applied to 0.8m³ standard GP bucket.
5. Bucket is selected in the above models.
6. Boom point is furnished with the sheaves for clamshell use.

Standard equipment

9m standard boom
27.5ton hook block with 2 sheaves
Engine tachometer
Hour meter
Water temperature gauge
Oil pressure gauge
Ammeter
Work lights
Room light
Power steering

X-type hydraulic outrigger
Axle locks
Steering direction correcting switch
All wheel brake at work
Hook safety latch
Swing alarm
Car heater (hot water type)
Front wiper
Rear view mirrors
Electric fuel oil pump

Alarming buzzer
Level gauge
Car radio
Sun visor
Ash tray
Cigarette lighter
Reclining seat
Standard lightings on chassis
Safety wire netting on inner boom

Optional equipment

10m folding standard boom
3m insert boom with pendant ropes
6m insert boom with pendant ropes
15ton hook block
Moment limiter
Rope guide roller for insert boom
Clamshell bucket
Hydraulic tagline
Lifting magnet