



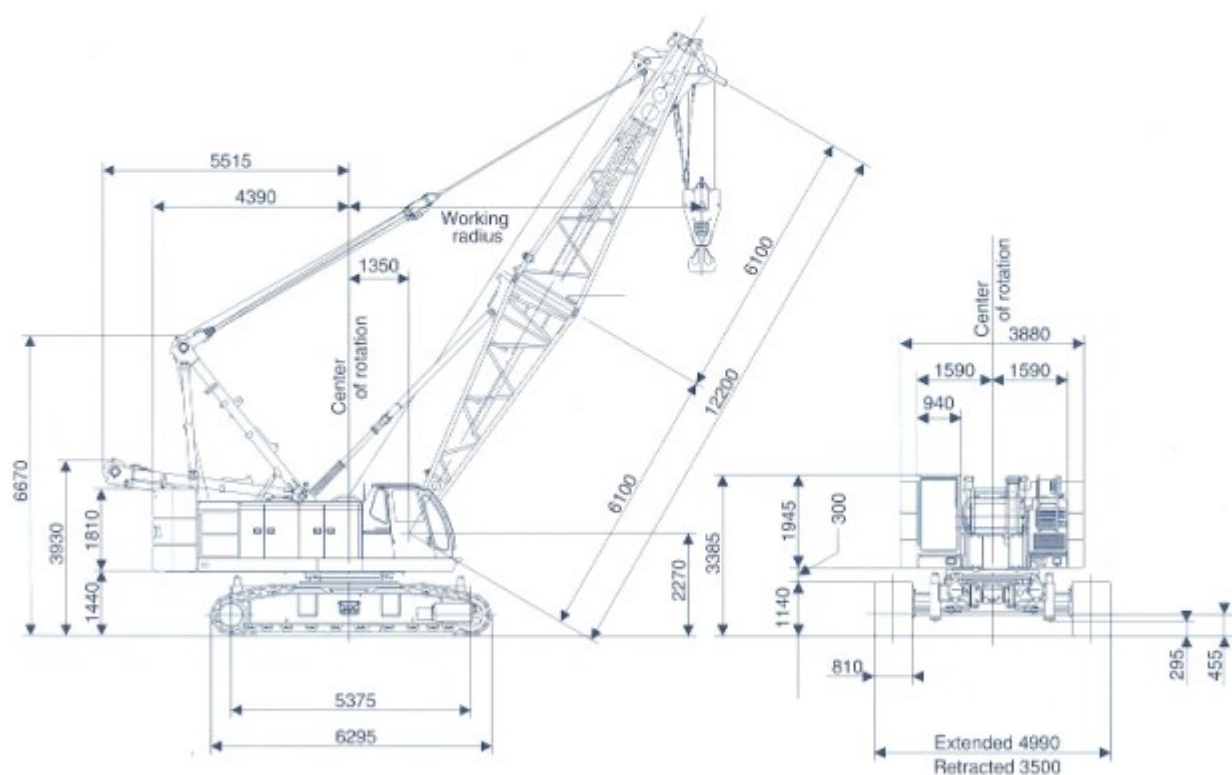
HITACHI SUMITOMO



# SCX900-1

90-M ton Hydraulic Crawler Crane  
& Cable Excavator

## General Dimensions:



(in mm)

1st Edition



# Specifications

HITACHI SUMITOMO

SCX900-1

## Basic Machine

### Superstructure

#### UPPER REVOLVING FRAME:

All-welded, precision machined, robust construction. A machined surface provided for mounting load hoist and boom hoist assemblies, and mounting itself on turntable bearing.

#### TURNTABLE BEARING WITH INTERNAL SWING GEAR:

Single shear ball type; inner race of turntable bearing with integral, internal swing (ring) gear bolted to carbody frame, and outer race of turntable bearing bolted to upper revolving frame.

#### CONTROL SYSTEM:

System contains one set each of duplicate and triplicate tandem valves which direct oil to various machine function and are actuated by control levers via remote controlled hydraulic servo for all motions. Working speeds can be precisely controlled by motorcycle type throttle and pilot-operated arm chair single axis control levers in cooperation with "SC" controller that varies engine rpm and hyd. pump discharge simultaneously, or varies just hyd. pump discharge while keeping engine rpm. System also takes unique EEPSCA (Electrical Engine Pump Sensing Analyzer) to maximizes drum horsepower, and reduces horsepower loss with eliminating the possibility of engine stall.

**Pump control system** — By "SC" controller that provides two modes of engine-pump control.

#### MODE I:

The SC Controller is normally programmed to vary the engine speed and pump discharge simultaneously. Simply twisting the grip advances the engine to maximum speed and the hydraulic pumps to maximum flow at the same time. This mode is suitable to precision crane work.

#### MODE II:

By activating a switch, it is able to vary just the pump discharge by means of the grip throttle, while keeping engine speed fixed. Mode II is convenient for operations such as lifting magnet and bucket work, where the engine is normally run at full throttle.

#### HYDRAULIC SYSTEM:

System provided with three variable displacement axial piston pumps and one fixed displacement duplicate tandem gear pump for both independent and combined operations of all functions. Gear pump also used for system valves and cylinder controls.

**Main/aux. crane hoist motors** — Variable displacement axial piston motor with counterbalance valve.

**Boom hoist motor** — Axial piston type with counterbalance valve and spring-applied/hydraulically released multiple wet-disc type automatic brake.





**Third drum motor** — Optional extra; axial piston type with counterbalance valve;

**Swing motor** — Two; axial piston type with spring-applied/hydraulically released multiple wet-disc type manually controlled brake.

**Travel motors** — Shoe-in design; axial piston motor with brake valve and spring-applied/hydraulically released multiple wet-disc type automatic brake.

**Independent hyd. circuits** — Available in between hydraulic circuits of P1 main pump and front main drum winch motor, and between P2 main pump and rear main drum winch motor.

**Hydraulic oil reservoir** — 410 liters capacity.

#### LOAD HOIST ASSEMBLY:

Front and rear main operating drums driven by independent hydraulic motor of bi-directional, variable displacement axial piston motor through 2-stage planetary reduction gear units powering the rope drum in either direction for hoisting and lowering load. Each of drum sized in same dimension.

**Clutches** — Internal expanding, self-adjusting, mono-band design with non-asbestos lining; spring-applied, power hydraulically released.

**Brakes** — 1,270mm dia. by 170mm wide brake drum; external contracting band type with non-asbestos lining; operated by power hydraulically assisted foot pedal with locking latch. Two brake modes are available; for crane operation, automatic brake, spring-applied, power hydraulically released is applied when control lever is in neutral position, and for bucket operation, free-fall is available in the above control lever position.

**Drums** — One piece, parallel grooved lagging with locking ratchet wheel cast integral; mounted on drum shaft through anti-friction bearings.

**Drum locks** — Electrically operated pawl.

**Drum rollers** — Optional extra; available for right cable winding onto drums.

#### BOOM HOIST ASSEMBLY:

Driven by bi-directional, axial piston hydraulic motor through 2-stage planetary reduction gear unit powering the rope drum in either direction for hoisting and lowering boom.

**Brake** — Spring-applied, power hydraulically released multiple wet-disc type automatic brake.

**Drum** — One piece, parallel grooved lagging with locking ratchet wheel cast integral; mounted on drum shaft through anti-friction bearings.

**Drum lock** — Power hydraulically operated pawl.

#### THIRD DRUM WINCH MECHANISM:

Optional extra; driven by bi-directional, axial piston hydraulic motor through planetary reduction gear units powering the rope drum in either direction for hoisting and lowering load. This is available for auxiliary lift.

**Clutches** — Internal expanding, self-adjusting, mono-band design with non-asbestos lining; spring-applied, power hydraulically released.

**Brakes** — External contracting band type with non-

asbestos lining; operated by power hydraulically assisted foot pedal with locking latch. Not only automatic brake but also free-fall modes are available.

**Drums** — One piece, parallel grooved lagging with locking ratchet wheel cast integral; mounted on drum shaft through anti-friction bearings.

**Drum locks** — Electrically operated pawl.

#### SWING:

Driven by two units of bi-directional, axial piston hydraulic motors through 2 sets of planetary reduction gear unit powering swing pinion. Swing pinion meshes with internal teeth of swing (ring) gear of turntable bearing inner race.

**Brakes** — Manually controlled; spring-applied, power hydraulically released multiple wet-disc type; provided on each of hydraulic motor.

**Swing speed control** — Max. swing speed can be tuned to arbitrary value by tuning dial that varies pump displacement.

**Lock** — Mechanically operated drop pin.

**Speed** — 2.9min.<sup>-1</sup> <2.9rpm>

#### GANTRY:

A-frame type; raised and lowered by power hydraulic cylinders.

#### OPERATOR'S CAB:

940mm wide; acoustically treated, all new stamped, automotive type, full-vision, cushion rubber mounted, well-ventilated, full compartment, roomy operator's cab with large curved front window; provided with an arrangement of "SC" control/swing lever, sunvisor, sunshade, rear-view mirrors, intermittent dual window shield wipers with washer on both front and roof windows, and roll-down window on sliding door.

**Instrument panel** — Contains engine monitoring lamps, display panel of SML-10 Load Moment Limiter, and other necessary controllers and switches.

**Operator's seat** — Full adjustable reclining seat.

**Anemometer** — Optional extra; recommended for luffing towercrane attachment.

**Stone guard** — Optional extra; stainless steel-make. This is available for operator's cab protection from outside obstacles.

**AM/FM radio** — Provided as std. with clock.

**Fire extinguisher** — Optional extra; powder type with 1kg capacity.

#### MACHINERY CAB:

Equipped with hinged doors on both sides for machinery access and inspection; tape-type non-skid material applied to the roof.

#### CATWALKS:

Optional extra; hitched in place along both sides of machinery cab.

#### HYDRAULIC TAGLINE WINDER:

Optional extra; provided in front of upper revolving frame, and this is available for preventing a shake of suspended load like clamshell bucket by an 10mm dia. tug cable with light force.

#### COUNTERWEIGHTS:



Weighs 28.8ton with cast, 3-block, removable, corner-rounded design. Three blocks consist of "A" (9,500kg), "B" (9,800kg), "C" (9,500kg).

#### AUXILIARY WEIGHT:

Weighs 1.5ton. Mounted on part of optional 3rd drum location; if 3rd drum optionally required, no this 1.5ton weight is required.

#### ELECTRICAL SYSTEM:

24-volt negative ground system; provided with two maintenance free 12-volt batteries.

#### LIGHTING SYSTEM:

Includes following lights.  
 • Two 70 W working lights;  
 • One 10 W interior cab light.

#### POWER UNIT:

Make & Model	Mitsubishi 6D24-T*
Type	Water-cooled, 4-cycle, direct injection, turbo-charged, diesel w/automatic cooling fan
No. of Cylinders	Six (6)
Bore & Stroke	130 mm x 150 mm
Displacement	11,945 cc
Rated Output	184 kW/2,000 min <sup>-1</sup> < 250 ps/2,000 rpm >
Maximum Torque	1,155 N-m/1,400 min <sup>-1</sup> < 117 kgf-m/1,400 rpm >
Fuel Tank	410 liters

#### \*Note

6D24-TLU2L

EU Emission Regulations for Off-road Diesel Engines-  
 Stage 2

## Undercarriage

#### CARBODY FRAME:

All-welded, precision machined, box type construction; provided with longer axle with folding type tips reaching up to axle box end of crawler side frame for better fitting between axle and crawler side frames. A machined surface provided for mounting turntable bearing.

#### CARBODY JACK-UP DEVICE:

Contains four hydraulic jack cylinders attached on carbody jack cylinder beams for extending/retracting, and disassembling/assembling ease of crawler side frames.

**Pontoon** — All-welded construction; four pontoons each stored at an inside part of jack cylinder beams.

#### CRAWLER SIDE FRAMES:

All-welded, box type construction, precision machined; positioned on axle beam, and held in place by plate links.

**Removal cylinders** — Available for extending/retracting side frames, and assisting in removing side frames.

**Crawler side steps** — Provided at both ends of the frames for easy access to superstructure.

#### DRIVE SPROCKETS:

Cast steel, heat treated; one per side frame. Track drive sprocket assembly bolt-coupled to 3-stage planetary reduction gear unit outer case as an integral part of shoe-in type traction motor. Sealed between parts of rotation and non-rotation of the motor with floating seal.

#### IDLER WHEELS:

Cast steel, heat treated; one per side frame. Mounted on two bronze bushings with floating seals for lifetime lubrication.

#### TRACK ROLLERS:

Ten per side frame; each cast steel, double flanged, heat treated. All rollers mounted on two bronze bushings with floating seals for lifetime lubrication.

#### CARRIER ROLLERS:

Two per side frame; each cast steel, double flanged and heat treated. All rollers mounted on two bronze bushings with floating seals for lifetime lubrication.

#### TRACKS:

Heat treated, self-cleaning, multiple hinged track shoes joined by full floating pins; 53 pcs. per side frame.

**Shoe width** — 810mm wide as standard.

**Track adjustment** — Manual adjustment device with oil jack and shim plate packs is standardized. As an optional extra, that idler wheels automatically adjusted while operation by means of hyd. cylinders actuated by power hydraulic supplied from operational hyd. pumps of superstructure is available instead.



**TRAVEL AND STEERING:**

A bi-directional, shoe-in type axial piston hydraulic motor bolt-couples drive sprocket thru 3-stage planetary reduction gear unit outer case at each crawler side frame end for travel and steer. Straight-line travel (forward or reverse), pivot or differential turns, and counter-rotation for spin turns available.

**Brake** — Spring-applied, hydraulically released multiple wet-disc type automatic brake; located within hydraulic motor. Brakes automatically set when travel levers are in neutral or when engine is shut down.

**Travel speed** — 1.8km/hr.

**Gradeability** — 30% (17°) permissible based on basic machine without front-end attachment.

(11) lifting load ratio indication with 3 kinds of color lamping (green, yellow and red).

b. LCD 2 indicates:

- (1) engine rpm, or
- (2) lifting height.

c. LCD 3 indicates:

- (1) present lifting load, or
- (2) rated load, or
- (3) remaining load.

d. LCD 4 indicates:

- (1) liftcrane/luffing towercrane boom angle.

e. LCD 5 indicates:

- (1) tower jib angle, or
- (2) fly jib offset angle;
- (3) present working radius, or
- (4) remaining working radius.

Display panel also provided with a fourteen-kind of indication lamp, and a function to indicate letter message on LCD 1 when machine becomes abnormal.

**NON FREE-FALL OPERATION SWITCH:**

This is for keeping non free-fall operation during operation when it is necessary. Provided with key for switch on-off control.

**HOOK OVER-HOIST LIMITING DEVICE:**

Interlocked with the SML-10 for automatically preventing a hook over-hoist of crane main boom with functions of automatic drum braking, and warnings by red lamp and annunciating alarm.

**BOOM OVER-HOIST AND -LOWERING LIMITING DEVICE:**

This is one of key safety devices; interlocked with the SML-10 also for automatically preventing boom over-hoist and -lowering with functions of automatic drum braking, and warnings by red lamp and annunciating alarm. Further boom protection from rapid boom over-hoist by hook over-hoist motion under mal-function of hook over-hoist limiting device is available as one of functions of the SML-10.

**BOOM BACKSTOPS:**

Dual; telescopic design with spring buffers.

**DUAL BOOM OVER-HOIST LIMITING DEVICE:**

Additional limit switch located on boom backstops; this is as a further safety device for redundant boom protection.

**SWING LOCK:**

Mechanically operated drop pin; available to firmly lock superstructure in four positions of facing front or rear or left or right to undercarriage.

**DRUM LOCKS:**

Electrically operated pawl locks is available on front and rear main drums while power hydraulically operated pawl lock is available on boom hoist drum with an automatic locking device as std.

**THIRD DRUM LOCK:**

Provided as std. when an optional 3rd drum winch is provided.

**BOOM ANGLE INDICATOR:**

Pendulum type; mounted on right-hand side of bottom section of crane main boom.

---

## Safety Devices

---

**SML-10 LOAD MOMENT LIMITER:**

This is a fully computerized total safe operation control system, and automatic over-load preventing system as standard equipment.

**Construction (standard version)** — Comprises (1) load detecting device with amplifier for general crane application (except luffing towercrane application), (2) angle detector for crane main boom/luffing towercrane boom (except tower jib), (3) computerized Micro Processing Unit (M.P.U.), and (4) display panel.

**Functions** — This system functions that if a lifting load reaches a 90% of the rated one specified in the crane capacity chart, an annunciating pre-warning (about to stop automatically) is given; if it is an 100%, a warning is given by red lamp, and annunciating warning (boom being overloaded), and all peril side motions are automatically stopped. The machine, however, can be operated in safety side motions.

**Display panel indications** — Followings are indication details on LCD 1 thru LCD 5:

a. After operation modes were set by means of mode setting keys on panel, LCD 1 indicates:

- (1) liftcrane/luffing towercrane boom length;
- (2) kind of hook block (for boom of item 1);
- (3) no. of part-line (for hook block of item 2);
- (4) tower jib length;
- (5) kind of hook block (for tower jib of item 4);
- (6) no. of part-line (for hook block of item 5);
- (7) liftcrane boom/tower jib upper limit setting angle;
- (8) liftcrane boom/tower jib lower limit setting angle;
- (9) lifting curve number ("01" to "03");
- (10) "attached or non" of aux. short jib, and



**HOOK LATCH:**

Provided on every kinds of hook to prevent out of place of cable from hook.

**LEVEL GAUGE:**

Bubble type; located on operator's cab floor of superstructure.

**LEVER LOCKS:**

Provided on all control levers (except swing lever) to lock levers in neutral.

**SWING ALARM:**

This is by buzzer, and flasher lamps located on both sides of machinery cab.

**ANNUNCIATING ALARMS:**

This is one of functions of the SML-10; provided with fifteen kinds of the alarm like "about to stop automatically".

**SPEED SLOWDOWN DEVICE:**

This is for speed slowdown of hoisting and lowering motions of crane main boom (and/or tower jib in case of luffing towercrane att.) which are available just before automatic stopping to prevent a shock.

**SWING BRAKE LAMP:**

Provided on operator's cab instrument panel; this is available to confirm whether or not swing brake is applied.

**SIGNAL HORN:**

Available as warning just before every kinds of motions from operator.

**FOOL PROOF SHUT-OFF SYSTEM:**

Located in the cab exit; this is available to automatically deactives and locks hydraulic system.

**TRAVEL ALARM:**

Buzzer warns when travel motion is initiated.

**ENGINE MONITORING LAMPS:**

Available for checking engine operating conditions like battery charge, engine oil pressure, radiator coolant level, oil filter clogging, air filter clogging, and battery electrolyte amount.

**EMERGENCY MACHINE STOP BUTTONS:**

Two; each located nearby front main and boom hoist drums. Available when it is necessary to stop all machine motion.

**REAR VIEW MIRRORS:**

Two each provided on front-left and -right corners of super-structure.

**THREE COLOR PERCENTAGE INDICATOR:**

Optional extra; this is with three colours of Green, Yellow and Red. Each colour indicates the load percentage to rated capacity; Green shows less than 90% as safety, Yellow shows 90 to 99% as marginal, and Red shows over 100% as over-loading. As further function, Red lamp comes on automatically when operator cuts off safety device switch absent-mindedly.

**LIFTING HEIGHT METER:**

Optional extra; available to indicate lifting height above ground or depth below ground on display "LCD 2" of SML-10 Load Moment Limiter display panel.

**MICROPHONE & LOUD-SPEAKER:**

Optional extra; this is for operator's convenience for loud speaking.

**ANNUNCIATING SWING ALARM:**

Optional extra; this is additional alarm for swing motion with a caution voice of "now swing, keep clear please!".

**ANNUNCIATING TRAVEL ALARM:**

Optional extra; this is additional alarm for travel motion with a caution voice of "now travel, keep clear please!".

**DRUM LIGHT & MIRROR:**

Optional extra; these are available for checking rope winding onto front and/or rear drum(s).

**AUX. CRANE HOOK OVER-HOIST LIMITING DEVICE:**

Optional extra; this is available for auxiliary crane hoist with optional aux. short jib and/or fly jib. Performs the same function as that of "Hook over-hoist limiting device" mentioned before.

In addition to the above, following safety devices are standard for luffing towercrane attachment.

**TOWER JIB ANGLE DETECTOR:**

This is one of key safety device in a case of luffing towercrane attachment.

**TOWERCRANE LOAD DETECTOR:**

This is also important safety device when luffing towercrane attachment is required.

**TOWER JIB OVER-HOIST AND -LOWERING LIMITING DEVICE:**

Performs all the same function as that of "Boom over-hoist and -lowering limiting device" stated before.

**TOWER JIB HOOK OVER-HOIST LIMITING DEVICE:**

Performs the same function as that of "Hook over-hoist lifting device" described before.

**TOWERCRANE ATT. SELF-ERECTION MODE:**

This is an internal, integral mode as one of key function of the SML-10 for safe self-erection and -laying down of luffing towercrane attachment without fail.

**TOWER JIB BACKSTOPS:**

Dual; telescopic design with spring buffers.

**DUAL TOWER JIB OVER-HOIST LIMITING DEVICE:**

Additional limit switch located on tower jib backstops; this is as a further safety device for redundant tower jib protection.





# Liftcrane Capacities

Boom length (m) Working radius (m)	12.20	15.25	18.30	21.35	24.40	27.45	30.50	33.50	36.55	39.60	42.65	45.70	48.75	51.80	54.85	57.90	60.95
4	90.0																
4.5	80.5	77.0/4.6															
5	70.8	69.2	66.0/5.1	58.7/5.8													
6	55.0	55.0	55.0	54.9	52.9/6.2	44.0/6.7											
7	44.0	44.0	44.0	44.0	43.8	43.7	42.0/7.2	37.9/7.7									
8	36.4	36.4	36.3	36.2	36.1	36.1	36.0	35.8	30.0/6.3	30.0/6.8							
9	30.9	30.8	30.7	30.6	30.5	30.4	30.3	30.1	30.0	29.5	26.5/9.3	25.9/9.9					
10	26.7	26.6	26.5	26.4	26.3	26.2	26.1	25.9	25.8	25.7	25.7	25.5	22.0/10.4	22.0/10.9	20.5/11.5		
12	20.9	20.8	20.6	20.5	20.4	20.4	20.2	20.0	19.9	19.8	19.7	19.6	19.6	19.4	19.3	19.1	15.0/12.5
14	20.7/12.1	16.9	16.8	16.7	16.5	16.5	16.3	16.1	16.0	15.9	15.8	15.7	15.6	15.5	15.3	15.2	14.5
16		15.7/14.8	14.2	14.0	13.9	13.7	13.5	13.4	13.3	13.1	13.0	12.9	12.8	12.6	12.5	12.4	12.2
18			12.6/17.4	12.0	11.9	11.7	11.5	11.4	11.3	11.1	11.0	10.9	10.8	10.7	10.6	10.5	10.1
20				10.6	10.3	10.2	10.0	9.8	9.7	9.6	9.4	9.3	9.2	9.1	9.0	8.8	8.6
22					9.0	8.9	8.7	8.6	8.5	8.3	8.2	8.0	7.9	7.8	7.6	7.5	7.3
24					8.5/22.7	7.9	7.7	7.6	7.5	7.3	7.1	7.0	6.9	6.8	6.6	6.4	6.3
26						7.2/25.3	6.9	6.7	6.6	6.4	6.3	6.1	6.0	5.9	5.8	5.6	5.4
28							6.2	6.0	5.9	5.7	5.6	5.4	5.3	5.2	5.0	4.8	4.6
30								5.4	5.3	5.1	4.9	4.8	4.7	4.5	4.3	4.1	3.9
32								5.2/30.6	4.8	4.6	4.4	4.2	4.1	3.9	3.7	3.5	3.2
34									4.5/33.2	4.1	3.9	3.7	3.6	3.4	3.2	2.9	2.7
36										3.7/35.9	3.5	3.3	3.1	2.9	2.7	2.5	2.3
38											3.1	2.9	2.7	2.5	2.3	2.1	1.8
40											3.0/38.5	2.6	2.3	2.1	1.9	1.7	1.5
42												2.3/41.2	2.0	1.8	1.6		
44													1.8/43.5	1.6			

(EC400024)



# Liftcrane Working Ranges

