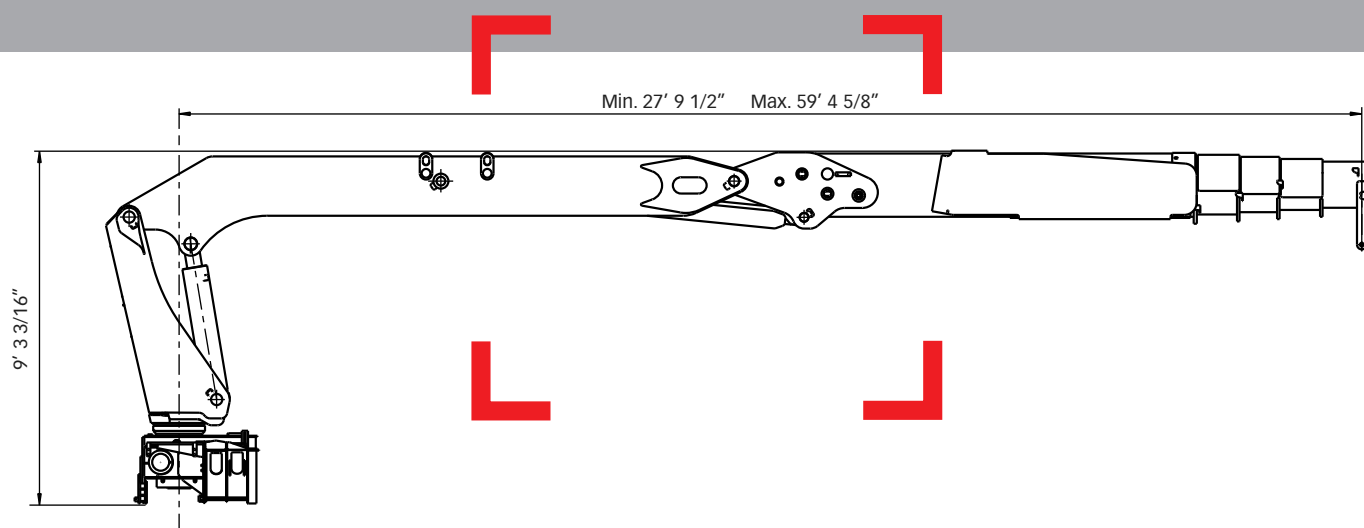




HIAB **XS** 335 K Range 193,000 - 209,000 ft-lbs (26-29 tm)



Basic data



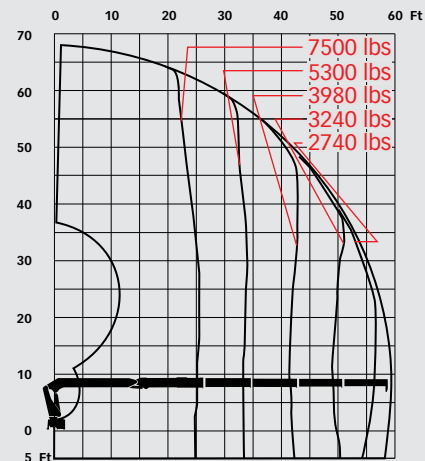
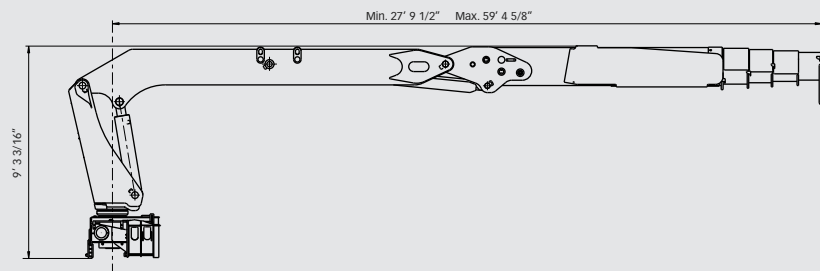
HIAB XS 335 K Basic data

Technical data

K-4

Max. lifting capacity (ft-lbs)	192600
Outreach - hydraulic extensions	59' 5"
Outreach - manual extensions	-
Outreach / Lifting capacity, standard (lbs)	25' 3" / 7500
	33' 1" / 5300
	41' 4" / 3980
	48' 10" / 3240
	56' 9" / 2740
Slewing angle	460°
Height with horizontal boom	9' 2"
Installation space needed	3' 8"
Weight - "standard" crane without stabilizers (lbs)	10428
Weight - stabilizer equipment (lbs)	1285

HIAB XS 335 K-4



Disclaimer

Hiab cranes have been built to meet the highest standards of safety and service life and have been thoroughly tested. Strength calculations for this model have been carried out in accordance with EN13001. Hiab's certified Quality Assurance System complies with the ISO 9001. Some of the items in our literature may be extra equipment. Certain applications may require an official permit. We reserve the right to change technical specifications without prior notice. Hiab cranes produced for EU-countries are CE-marked and comply with the European Standard EN 12999.