

Technical Data



Hiab 477 E-5 HiPro + Jib100X-3.3

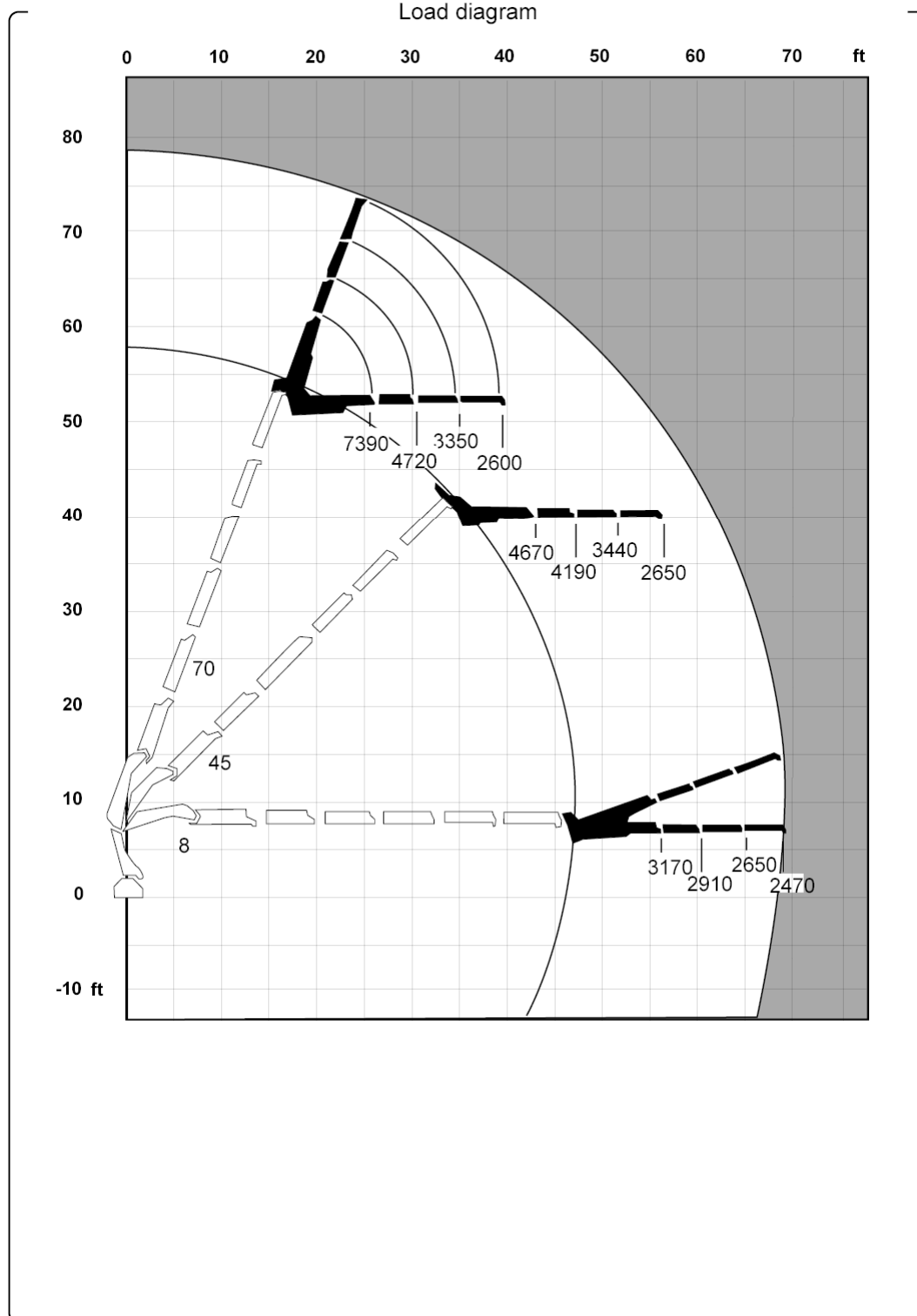
Version		HIAB 477 E-5 HiPro + Jib100X-3.3
Lifting capacity (ADC)	ft-lbs	300 920
Outreach - lifting capacity, standard	ft-lbs.	55' 9" - 3 170
		59' 9" - 2 910
		64' 8" - 2 650
		69' 7" - 2 470
Outreach - lifting capacity, manual extensions	ft-lbs.	
Hydraulic outreach, standard	ft	69' 11"
Lifting height above installation level, hydr/man	ft	78' 5" / 0' 0"
Rec. oil flow	gallon/min	18 - 32
Working pressure	psi	5 080
Oil in tank	gallon	0 - 79
Slewing angle	Ø	400 - 400
Max slope viable at full capacity	°	4
Lifting speed at standard hydraulic outreach	ft/s	0' 0"
Height in folded position	"	106
Width in folded position	"	100
Install space required. Rotation area not included	"	64
Install space required with hose and pipe kit	"	64
Weight		
Crane in standard version without support legs	lbs.	0
Support leg equipment	lbs.	1 410 - 1 850
Data sheet		HIAB 477 E-5 HiPro + Jib100X-3.3



Diagrams

477 E-5 HiPro + Jib100X-3.3

Load diagram



The HIAB XS range

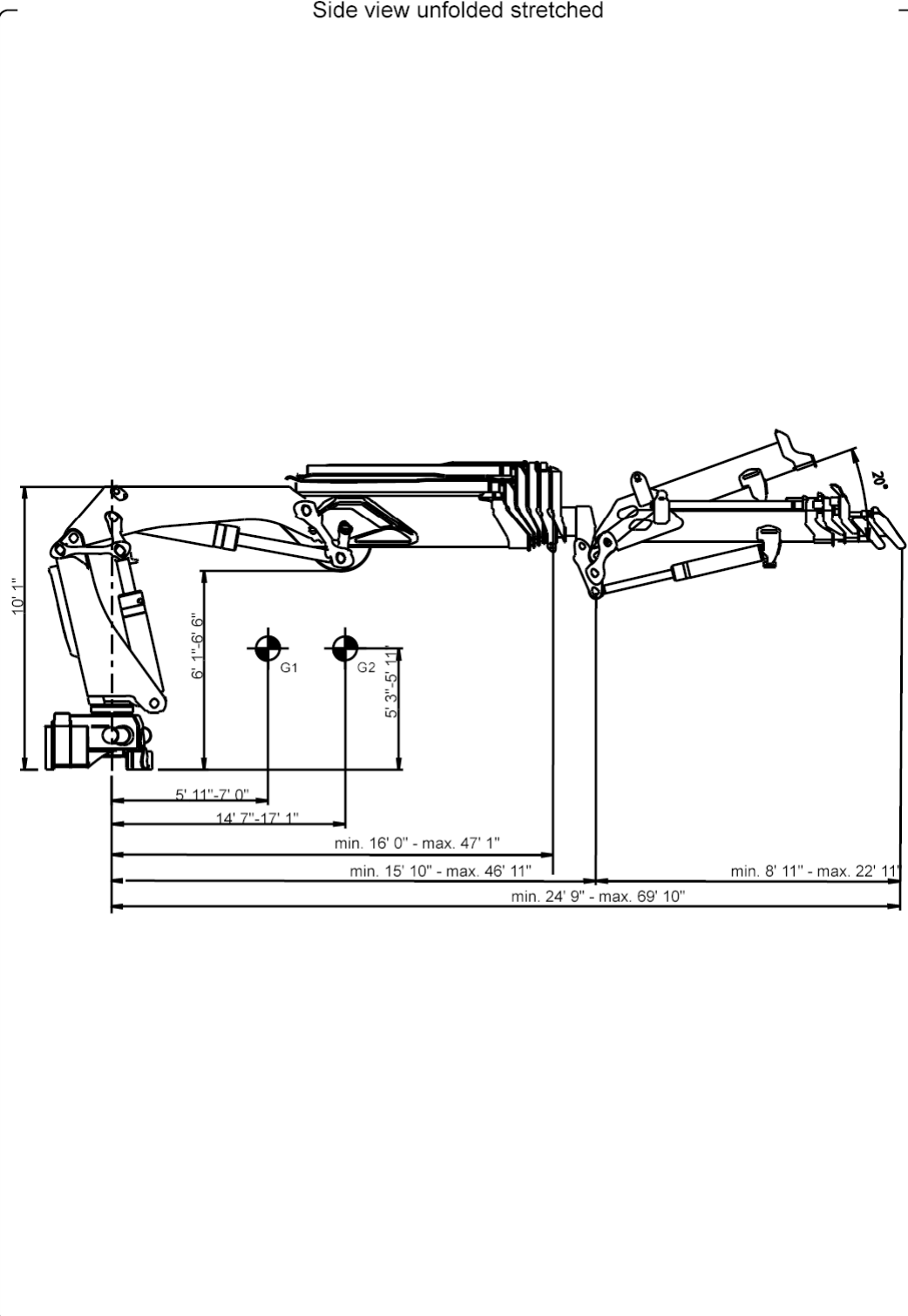
477 **HI** PRO



Diagrams

477 E-5 HiPro + Jib100X-3.3

Side view unfolded stretched



The HIAB XS range

477  PRO



477 E-5 HiPro + Jib100X-3.3

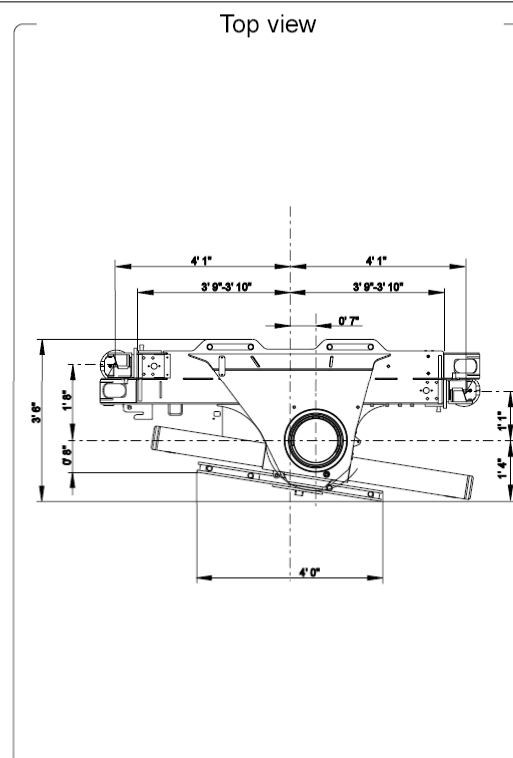
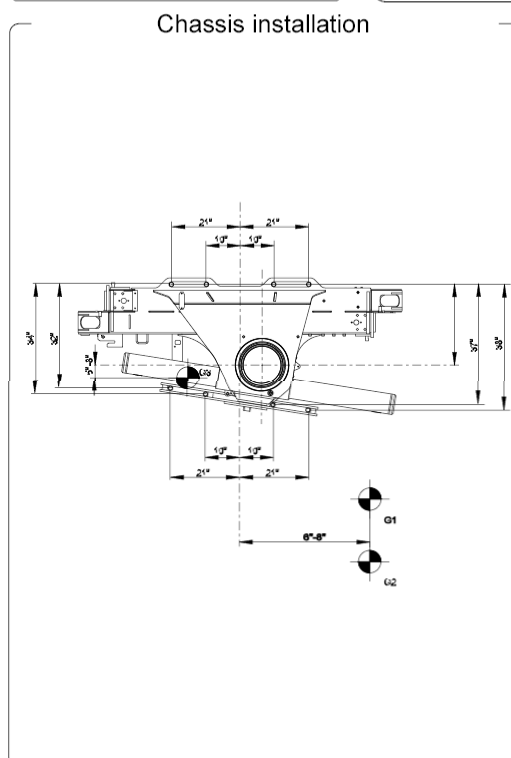
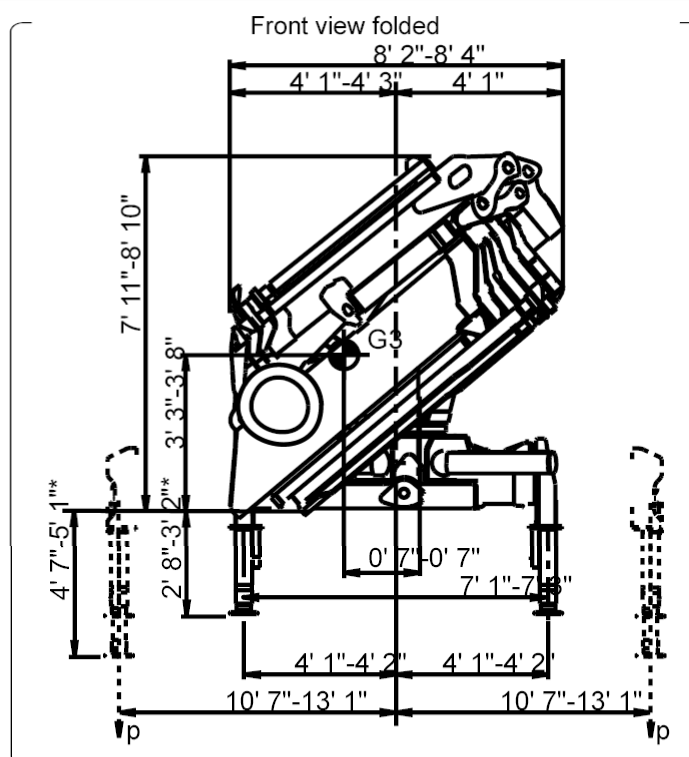
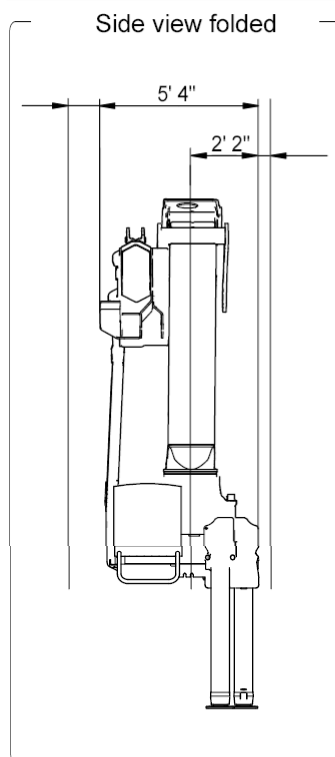
Technical drawing of a mechanical assembly in front view. The drawing includes the following dimensions and features:

- Top Dimensions:**
 - Overall width: 8' 2" - 8' 4"
 - Left section width: 4' 1" - 4' 3"
 - Right section width: 4' 1"
- Left Side Dimensions:**
 - Overall height: 7' 11" - 8' 10"
 - Section height: 3' 3" - 3' 8"
 - Section height: 2' 8" - 3' 2"
 - Section height: 4' 7" - 5' 1"*
- Right Side Dimensions:**
 - Section height: 7' 1" - 7' 8"
 - Section height: 0' 7" - 0' 7"
 - Section height: 4' 1" - 4' 2"
 - Section height: 4' 1" - 4' 2"
 - Section height: 10' 7" - 13' 1"
 - Section height: 10' 7" - 13' 1"
- Internal Features:**
 - A circular feature labeled **G3** is located in the upper left quadrant.
 - A dashed line indicates a hidden edge on the left side.
 - A dashed line indicates a hidden edge on the right side.

477 HI PRO

HIAB Diagrams

477 E-5 HiPro + Jib100X-3.3



The HIAB XS range

477 HI PRO