



View thousands of Crane Specifications on FreeCraneSpecs.com

MSHF

Free-standing and mobile



THE EASY WAY UP





View thousands of Crane Specifications on FreeCraneSpecs.com

MSHF

Free-standing and mobile



THE EASY WAY UP





HEK mast climbing work platforms economical, ergonomic and safe

Safe working

HEK has more than 40 years experience in the development and manufacture of mast climbing work platforms, transport platforms and material hoists. In all our activities, we operate according to the strictest requirements in terms of safety and quality. We only work with high grade galvanized structural materials, which of course comply with the very latest standards. HEK provides a range of courses dealing with technical and commercial aspects such as application possibilities, logistics, safety, loading and operation of machines and configuration control.

Cost-saving operation

Mast climbing work platforms transport both personnel and materials to the required working height, on any construction project. The platforms can be adjusted in both length and width, to match the shape and dimensions of the facade. The MSHF can be efficiently and effectively deployed on both low-rise and high-rise construction projects. Using the self-drive chassis, the machine can be very easily relocated in low-rise construction projects. This mast climbing work platform can raise loads of up to 8,800 lbs to a height of 660 feet. This makes it possible, in addition to all the tools and equipment you required, to also raise a whole day's production to the working level, in one lift. This logistical advantage is major source of cost saving!

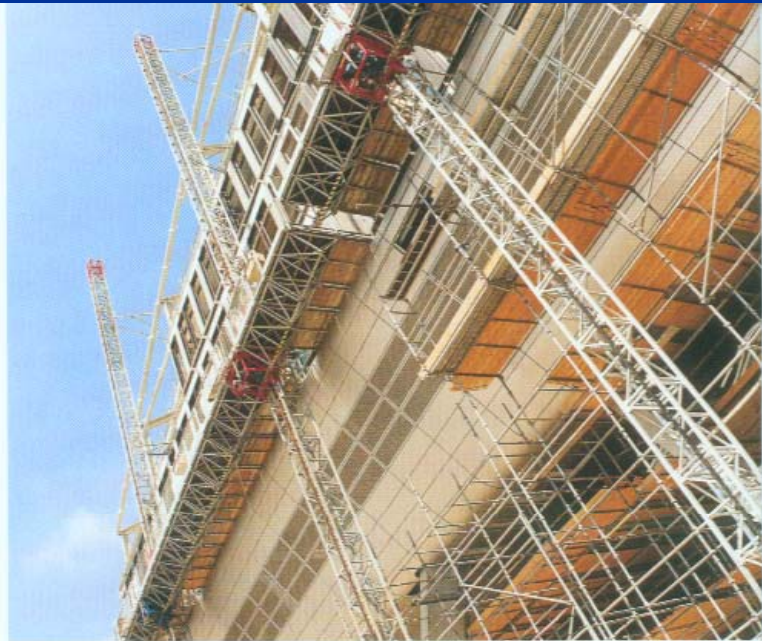
Ergonomic ease of operation

HEK mast climbing work platforms can raise all types of load and position them to the nearest inch. Heavy tools and materials are then always within reach. Furthermore, working on a mast climbing work platform is made easy because there are no scaffold poles to get in the way. As a result, the whole operation is both visible and safe at all times. In other words, mast climbing work platforms generate a comfortable working situation, whilst increasing productivity – yet another decisive cost saving.





The ideal mast climbing work platform



In certain situations, it is practically impossible to anchor any form of scaffolding. This is for example the case in large halls or with fragile walls.

HEK has developed a mast climbing work platform which is eminently suited to just these situations. In outside applications, the MSHF mast climbing work platform can be raised free standing to a height of 66 ft and inside up to 99 ft.

The MSHF mast climbing work platform offers many other advantages, too:

- Although it is free standing, this mast climbing work platform offers tremendous lifting capacity. The single-mast version can raise a maximum of 4,400 lbs, whilst the 2-mast version can lift a huge 8,800 lbs. As a consequence, a great deal of equipment and tools can be raised to the required working height in a single lift.
- This mast climbing work platform has a large working surface. As standard, the platform measures 5 ft m wide, but can be extended to 8'-2", using extendable tubes. The platform length on the single-mast version ranges from 9.5 ft to 33.8 ft and on the 2-mast version from 27.9 ft to 77.5 ft; and even a massive 106'-11" when used with a Megadeck.
- On both the single-mast and 2-mast configuration, the MSHF can be mounted either on a ground frame of surprisingly small dimensions, or on a self-drive chassis. Using this chassis, the mast climbing work platform can be easily relocated around or in the building without additional equipment.
- If work has to be carried out at higher than 66 ft (up to a maximum height of 660 ft, an anchor is required only every 50 ft. Proportionally few anchor points are required resulting in maximum access to the facade. The mobile MSHF mast climbing work platform from HEK requires minimal assembly and dismantling time.
- The mast climbing work platform can be precisely positioned at any level for the most ergonomic working height, considerably increasing productivity.
- Complete pallets of glass, panelling or natural stone can be lifted, vibration-free and accurately to the required height, considerably reducing the risk of damage to expensive materials.
- The MSHF is entirely modular and therefore extremely flexible. It can be adapted to the contours of any facade. These alterations need only be carried out once, resulting in considerable cost savings.
- Most of components of the MSHF are exchangeable with other types of HEK mast climbing work platform.





The ideal mast climbing work platform

adaptable to any facade

even if anchoring is difficult or impossible

... for facade finishing and glazing

... demolition and renovation

... cleaning and repair





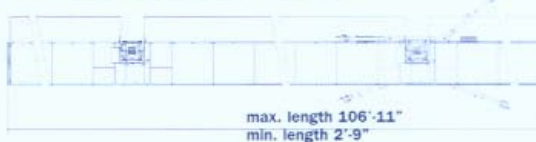
Technical specifications

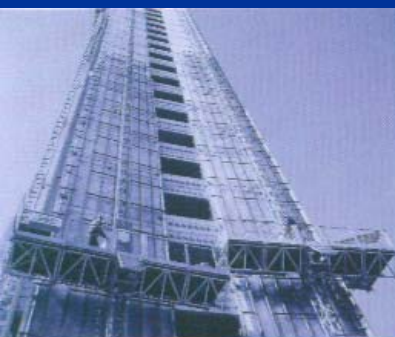


- Stable chassis. Particularly mobile thanks to the self-drive kit (standard)
- Powerful drive system beneath the platform. As a result, the platform remains obstacle-free and the motors are protected.
- All structural components are hot-dipped galvanized as standard, to increase service life. The machine is assembled using top of the range components, keeping maintenance costs and breakdown time to a minimum.
- Automatic electro-mechanical level correction system for 2 mast platforms.
- Simple and flexible anchoring system which can be attached anywhere on the building.

Max. payload	4,400 lbs (1 mast)
	8,800 lbs (2 masts)
Dimensions platform	5 ft - 8'-2" x 9.5 ft - 33.8 ft (1 mast)
	5 ft - 8'-2" x 27.9 ft - 106'-11"
Hoisting/descending speed	23 ft/min
Max. mast height freestanding	66 ft outside
	99 ft inside
Max. mast height anchored	660 ft
Distance between anchors	50 ft
Distance between cable guides	20 ft
Rack module	8
Motor rating	2 x 2.1 kW
Power supply	208 V - 240 V, 3 phases, 60 Hz
Length mast section	4'-1" / 4'-11"
Weight mast section	176 lbs/227 lbs

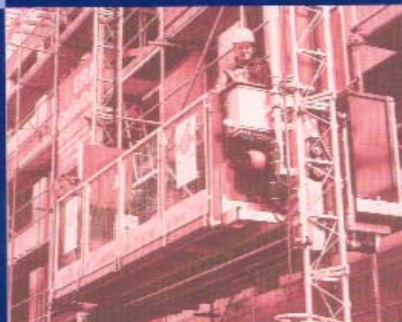
Basic mast climbing work platform Extension





Mast climbing work platforms a versatile working environment above ground level.

The alternative to traditional scaffolding and suspended systems. Single or twin mast versions with platform lengths of 8'-10" to 126 ft. Working heights of up to 660 ft, lifting capacity up to 12,100 lbs.



Transport platforms for transporting bulky and heavy loads.

Developed for vertical transportation of goods and people up to a height of 400 ft. Payloads of 1,100 lbs (incl. 3 persons) and 3,300 lbs (incl. 7 persons). Travel speed for personnel and materials 40 ft/min.



HEK, market leader in mast climbing work platforms

Save costs by working efficiently

Fast assembly, plenty of room to work on the platforms and rapid and energy-saving transportation of personnel and materials mean that projects can be carried out efficiently and economically.

Safety and durability

HEK's high quality is based on more than 40 years experience in developing and producing mast climbing work platforms. The use of first class materials, a high degree of precision due to automated production and sturdy constructions provide a guarantee of safety and durability.

Extensive standard package and custom work

HEK is not without reason world leader in mast climbing work platforms. For almost any project, HEK can offer a suitable solution for working above ground level and for vertical transportation of materials and/or people.

internet www.HEK.com
e-mail info@HEK.com

HEK Manufacturing B.V.
P.O. Box 2
5090 AA Middelbeers
The Netherlands
Telephone (+31) 13 514 86 53
Telefax (+31) 13 514 86 30



HEK Manufacturing B.V. is
ISO-9001 approved

Material hoists

efficient transportation of goods for smaller projects.

These durable and robust material hoists are easy to transport and assemble.

With payloads up to 1,100 lbs and a maximum working height of 262 ft.

Total support services to ensure full customer satisfaction.

The world wide HEK organisations provide their clients a complete range of customer services:

- pre-sales • sales • rental •
- assembling and dismantling •
- transport and maintenance •
- training and technical support (calculations, tailor-made solutions, special constructions, working drawings) and online services.

The best service available from start to finish, that's HEK!
Why not ask our customers?

Intersect USA, Inc.

4295 McEver Industrial Drive
Acworth, GA 30101, U.S.A.
Telephone (800) 343 2449/(+1) 770 917 0425
Telefax (+1) 770 917 0614