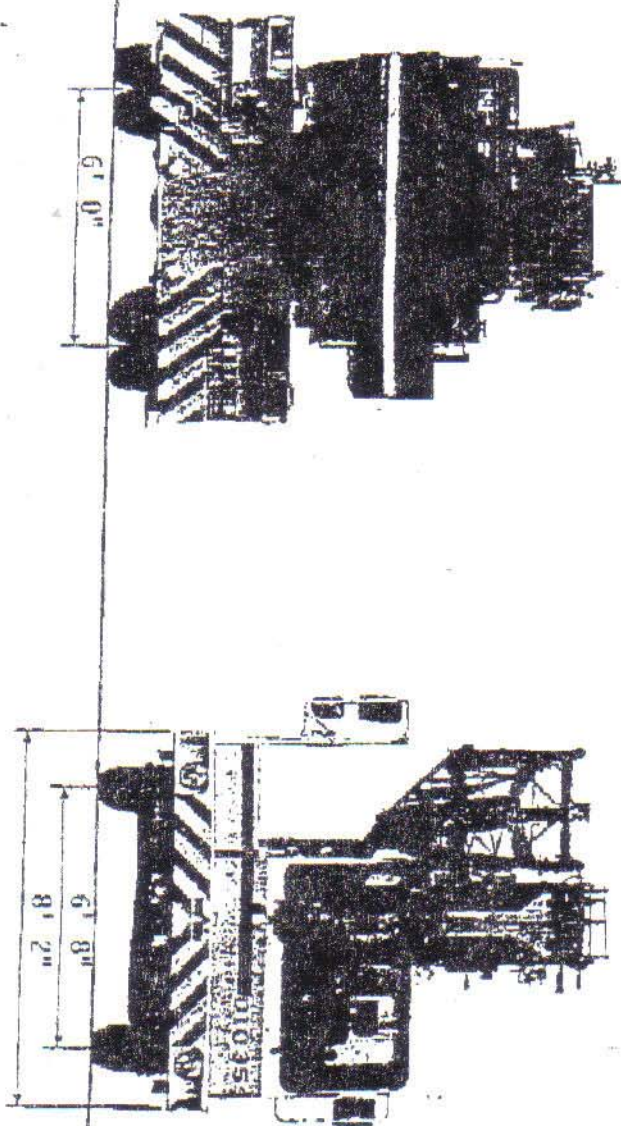


41' 10"





## SPECIFICATIONS - GROVE DTC 40 TON HYDRAULIC TRUCK CRANE

DESCRIPTION		DTC35
MAX LIFTING CAPACITY		40 TON
VEHICLE WEIGHT		64,350 LB.
MAX SPEED		50 MPH
MIN. TURNING RADIUS		39' 8"
MAX. TIP HEIGHT		149'
GENERAL DIMENSIONS	OVERALL LENGTH	41' 10"
	OVERALL HEIGHT	11' 6"
	OVERALL WIDTH	8' 2"
WHEEL BASE		15' 7" + 4' 3"
GRADEABILITY		41%
SWING SPEED		2.5 RPM
BOOM	NO. OF SECTIONS	4 SECTION FULL POWER
	LENGTH	34' - 105' (10.4M - 32M)
	ELEVATION	-3.5° - 81.5°
JIB	TYPE	TELE LATTICE
	LENGTH	25' / 34' / 43' (7.6M / 10.4M / 13.1M)
	OFFSET	2° / 17° / 32°
HOOK BLOCK		4 / 35
MAIN WINCH	SUPPLIED ROPE LENGTH	590' (180 M)
	MAX. SINGLE LINE PULL	11,100 LB.
	MAX. SINGLE LINE SPEED	177' / 354'
WIRE ROPE (MAIN / AUX.)		9/16" (14 mm)
AUX. WINCH	SUPPLIED ROPE LENGTH	394' (120 M)
	MAX. SINGLE LINE PULL	11,000 LB.
	MAX. SINGLE LINE SPEED	177' / 354'
ENGINE	MODEL	DAEWOO D2366T
	POWER OUTPUT	295 HP @ 2,200 RPM
DRIVE TYPE		6 X 4
TIRE	FRONT	12.00-20x18PR (S) (Option: 425 / 65R 22-5)
	REAR	11.00-20x16PR (D)
MAX. OUTRIGGER SPAN		19' 8"
FUEL TANK CAPA.		78 GALLONS
HYDRAULIC TANK CAPA.		105 GALLONS
ELECTRIC SYSTEM		24
WORKING RADIUS		10' - 110' (3.0 - 33.5)

**HYDRAULIC SYSTEM - GROVE DTC 40 TON HYDRAULIC TRUCK CRANE**

Pumps	Three main gear pumps driven by carrier transmission through PTO with manual disconnect. Combined capacity 104 GPM. Max. pressure 175kg/cm <sup>2</sup> and standard pump disconnect for travel.		
Valves	Precision four way double acting control valves, 4 individual valve banks permit simultaneous control of multiple crane functions.		
Filter	Suction line type, full flow with by-pass protection and filter by-pass indicator replaceable cartridge.		
Reservoir	106 gallon (400 liter) with breather filter external sight gauge, clean out access, and wire mesh strainers.		
Oil Cooler	Remote mounted thermostatically controlled electric motor driven fan.		
<u>HOIST SPECIFICATIONS</u>	Grooved drum and two speed main and auxiliary hoists. Series parallel circuitry and two motors provide both high line pull and speed ranges. Power up and down equal speed, planetary reduction with integral automatic brake and electronic hoist drum rotation indicator.		
	Main and Auxiliary hoists		
		High range	Low range
	Main	354' / Min.	177' / Min.
	Aux.	354' / Min.	177' / Min.
Maximum Single Line Speed	Main	11,100 lb.	11,100 lb.
	Aux.	11,100 lb.	11,100 lb.
Maximum Single Line Pull	Main hoist	590'	9/16" (14mm)
	Auxiliary hoist	394'	9/16" (14mm)
Rope supplied			

**CARRIER SPECIFICATION – GROVE DTC 40 TON HYDRAULIC TRUCK CRANE**

Frame	High strength alloy steel all welded box-type construction with integral outrigger housings and front / rear lifting, towing and tie down lugs.
Outrigger System	Hydraulic single stage, double box telescopic beam and outriggers with integral holding valves. Inverted jack cylinders (4), standard 5 <sup>th</sup> vertical jack mounted to the front frame section to permit 360° lifting capabilities. All steel fabricated fixed type outrigger float.
Outrigger Controls	Located on both sides of the carrier. Push button controls. Crane level indicator (sight bubble) adjacent to controls.
Engine	DAEWOOD D2366T six cylinder turbo-charged engine 295ps at 2200 rpm. (Option: Cummins 6CTA 8.3, 6 cylinder / Cummins 6 BTA)
Fuel Tank	78 Gallons / 296 liter
Electrical System	24-volt system – maintenance free batteries.
Drive	6 x 4
Steering	Power assisted heavy-duty ball and nut type.
Transmission	Eaton Fuller manual transmission. 9 forward and 2 reverse speeds. PTO drive for hydraulic pump.
Axles	Front – Rockwell Eaton: steer, non-driving. Rear – Rockwell Eaton: 2 axles: non-steering, driving.
Suspension	Front axle spring mounted. Rear axles (2 & 3) solid mount tandem with equalizing beam and solid steel saddles.
Tires & Wheel	Front : 12.00 - 20x18PR Single (Option: 425 / 65R 22.5 Super Single.) Rear : 11.00-20x16PR dual.
Brakes	Full air on all wheels. Air dryer to preclude moisture accumulation. Spring applied emergency / park brake on rear axles.
Lights	Full lighting including head, tail, braking, reversing, directional and hazard warning lights.

**SUPERSTRUCTURE SPECIFICATIONS – GROVE DTC 40 TON HYDRAULIC TRUCK CRANE**

Boom	34' – 105' (10.4M - 32.0M) four section trapezoidal boom, sequenced-synchronizing telescopic sections slide on adjustable and replaceable nylatron pads.
Telescopic Swingaway	25' – 43' (7.60M – 13.10M) telescopic lattice swingaway extension offsettable at 2°, 17° or 32°, stowed alongside base boom when not in use. Maximum Tip Height : about 149' (45.4M)
Boom Nose	Six sheaves mounted on heavy duty tapered roller bearings with removable pin-type rope guards.
Boom Elevation	Single hydraulic cylinder with integral holding valves provide elevation from -3.15° to 81.5°
Load Moment & Anti-Two Block System	PAT DS 350 GW Letter style system Main unit in crane cab gives audible and visual warning to approach to overload. Automatically cuts out crane motions before overload. With working range limit function. Seven functions are constantly displayed. Digital liquid crystal display : Boom angle Either boom length or potential hook height Actual working radius Actual hook load Permissible load Bar graphical display : Moment as percentage
Cab	Full information on operating and service conditions is provided in comprehensive, well-displayed and easy-to-read control consoles in front of the driver. A hoist-drum rotation indicator on the joystick enables the operator to monitor the hoist movement while keeping the load in site. Other standard features include : hinged skylight, sliding left side door and sliding right side window, electric windshield washer and wiper, circulating air fan, air conditioning, heater, swing horn, fire extinguisher, AM/FM/Cassette stereo.
Swing	Ball bearing swing circle with 360° continuous rotation Grove planetary "glide swing" with foot actuated disc brake, spring applied hydraulically released park brake and 360° position positive turntable lock. Combination controls provided for hand or foot operation swing speed 2.5 rpm.
Counterweight	Counterweight installation and removal is accomplished quickly by the hydraulic counterweight cylinders



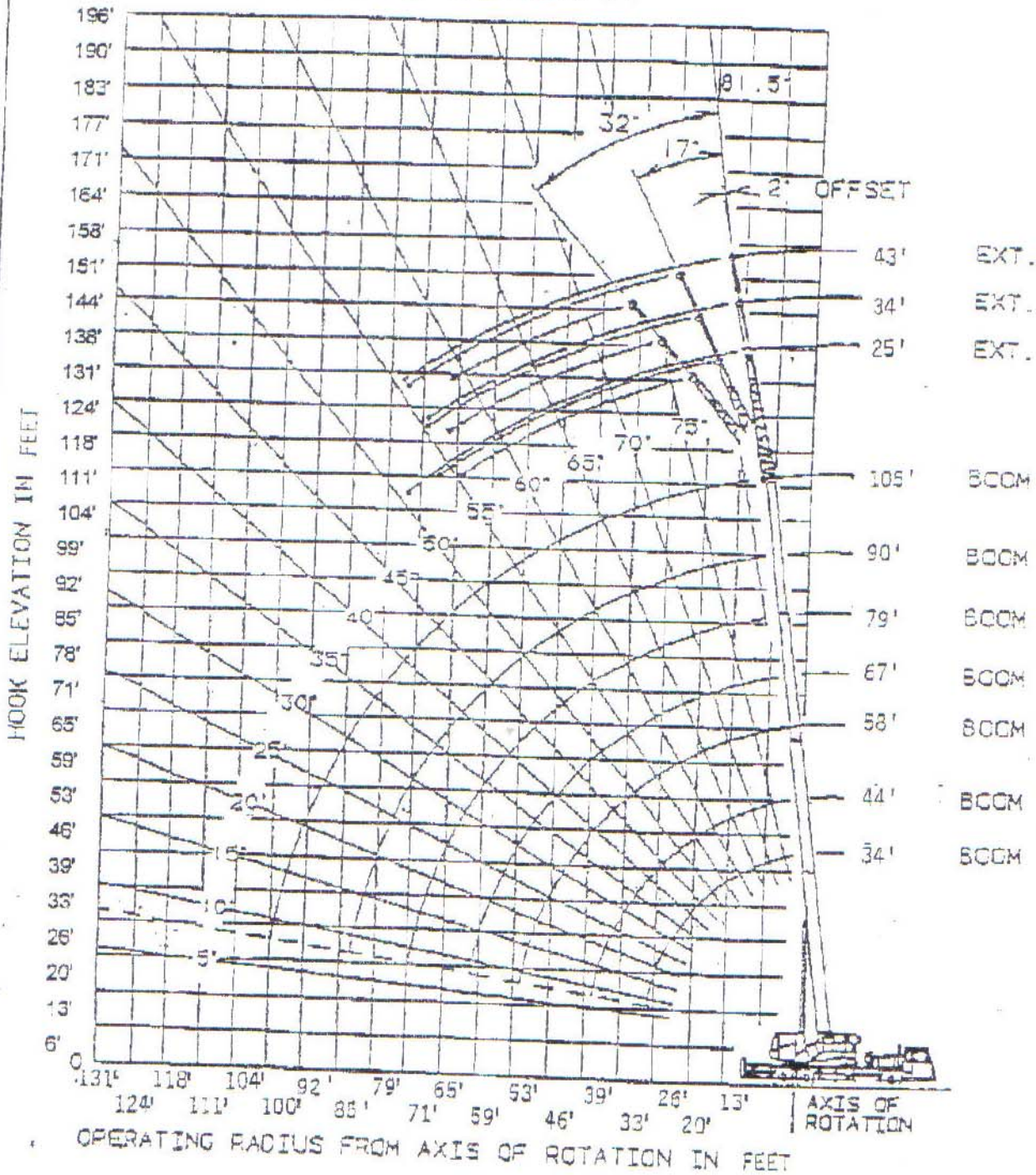
**SUPERSTRUCTURE SPECIFICATIONS (CONTINUED)**  
**GROVE DTC 40 TON HYDRAULIC TRUCK CRANE**

Cab	Tow men design, all steel fabricated with acoustical lining tinted safety glass throughout. Deluxe fabric covered fully adjustable seat. Complete driving controls and engine instrumentation including tachometer, speedometer, voltmeter, water temp. Oil pressure, fuel level, air pressure gauge with a/v warning, other standard items include hot water heater / defroster, air conditioning, electric windshield wash / wipe, fire extinguisher, seat belt and door and window locks, AM/FM/Cassette stereo.	
Maximum Speed	50 MPH (80 KM/H)	
Gross Vehicle Weight & Axle loads	Counterweight Installed	
	G.V.W. 63,800 lb.	Counterweight Stored (On Deck) 63,800 lb.
	Front: 17,000 lb.	18,800 lb.
Rear: 46,800 lb.	45,000 lb.	
Miscellaneous Standard Equipment	Dual rear view mirrors, hookblock tiedown sling, electronic back-up alarm, Light package, engine low oil pressure / high water temp. audio / visual warning. Exhaust engine brake, tire inflation kit.	



WORKING DIAGRAM

RANGE DIAGRAM



**GROVE DTC 40 TON HYDRAULIC TRUCK CRANE****MAIN BOOM LIFTING CAPACITIES (IN POUNDS) ON FULLY EXTENDED OUTRIGGERS - 360°**

LMI CODE	#001						
	34'	44'	58'	67'	79'	90'	105'
WORKING RADIUS	10.4M	13.5M	17.6M	20.5M	24.0M	27.5M	32.0M
9'	80,000						
10'	77,000	55,000	33,000	28,600			
11'	59,400	21,700	33,000	28,600	25,630		
13'	54,500	48,620	33,000	28,600	24,640	30,830	
16'	46,200	43,450	33,000	28,600	22,660	19,000	13,200
20'	38,390	37,180	29,370	25,530	20,790	17,600	13,200
23'	31,900	31,460	25,960	22,550	19,140	16,400	13,200
26'	26,840	26,400	23,210	20,130	17,710	15,100	12,430
29'		22,330	20,900	18,150	15,840	13,750	11,330
33'		18,260	17,520	16,500	14,300	12,630	10,730
19'			12,3200	13,090	11,880	10,670	8,800
46'			8,800	9,570	10,010	9,000	7,590
52'				7,150	7,810	7,590	6,380
59'				5,390	6,050	6,380	5,720
66'					4,620	5,060	4,840
72'					3,520	3,960	4,290
79'						3,080	3,410
85'							2,750
92'							2,090
100'							1,430
1° ANGLE CAPACITY	19,140	11,880	6,600	4,840	3,520	2,420	1,430
WORKING RADIUS	28'	38'	51'	61'	72'	83'	100'

**25' AUX BOOM LIFTING CAPACITIES (IN POUNDS) ON FULLY EXTENDED OUTRIGGERS - 360°**

OFFSET	2° OFFSET		17° OFFSET		32° OFFSET	
LMI CODE	#0021		#0022		#0023	
WORKING RADIUS	BOOM ANGLE	CAPACITY	BOOM ANGLE	CAPACITY	BOOM ANGLE	CAPACITY
23'	**	6,600				
26'	80.0	6,160				
29'	79.0	5,900		5,500		
37'	77.5	5,700	80.0	5,300	**	5,100
39'	74.5	5,300	77.0	4,950	79.0	4,700
46'	71.5	4,950	74.0	4,600	76.0	4,500
52'	68.5	4,600	71.0	4,300	73.0	4,200
59'	65.0	4,100	68.0	4,100	70.0	3,900
66'	62.0	3,740	64.5	3,900	66.0	3,740
72'	58.0	3,080	61.0	3,200	62.5	3,300
79'	54.5	2,530	57.0	2,600	58.5	2,750
85'	50.5	2,100	53.0	2,200	54.5	2,310
92'	46.5	1,600	48.5	1,760	50.0	1,870
100'	42.0	1,300	44.0	1,430	45.5	1,430





## GROVE DTC 40 TON HYDRAULIC TRUCK CRANE

34' AUX BOOM LIFTING CAPACITIES (IN POUNDS) ON FULLY EXTENDED OUTRIGGERS - 360°

OFFSET LMI CODE	2° OFFSET #0031		17° OFFSET #0032		32° OFFSET #0033	
WORKING RADIUS	BOOM ANGLE	LOAD	BOOM ANGLE	LOAD	BOOM ANGLE	LOAD
26'	**	5,280				
29'	80.5	5,060				
33'	79.0	4,730	**	4,510		
39'	76.5	4,400	80.0	4,180	**	3,520
46'	73.5	3,960	77.0	3,850	79.5	3,300
52'	71.0	3,520	74.0	3,520	76.5	2,970
59'	68.0	3,190	71.0	3,190	73.5	2,640
66'	65.0	2,860	68.0	2,860	70.5	2,420
72'	62.0	2,640	65.0	2,640	67.5	2,310
79'	58.5	2,310	61.5	2,310	64.0	2,090
85'	55.0	2,090	58.0	2,090	60.5	1,980
92'	51.0	1,870	54.5	1,870	56.5	1,870
100'	47.5	1,430	50.5	1,550	52.5	1,650
105'					48.5	1,320

43' AUX BOOM LIFTING CAPACITIES (IN POUNDS) ON FULLY EXTENDED OUTRIGGERS - 360°

OFFSET LMI CODE	2° OFFSET #0041		17° OFFSET #0042		32° OFFSET #0043	
WORKING RADIUS	BOOM ANGLE	CAPACITY	BOOM ANGLE	CAPACITY	BOOM ANGLE	CAPACITY
29'	**	3,740				
33'	80.5	3,630				
39'	78.5	3,190	**	2,970		
46'	75.5	2,860	79.5	2,860	**	2,200
52'	73.0	2,530	76.5	2,530	80.0	2,200
59'	70.0	2,310	74.0	2,310	77.0	2,156
66'	67.5	1,980	71.0	2,090	74.0	2,090
72'	64.5	1,870	68.0	1,870	71.0	1,980
79'	61.5	1,540	65.0	1,650	68.0	1,870
85'	58.5	1,430	62.0	1,430	65.0	1,650
92'	55.0	1,210	58.0	1,320	61.5	1,540
100'			55.0	1,100	58.0	1,320
105'					55.0	1,210

\*CAPACITIES GIVEN DO NOT INCLUDE THE WEIGHT OF HOOKBLOCKS, SLINGS, AUXILIARY LIFTING EQUIPMENTS AND LOAD HANDLING DEVICES. THEIR WEIGHTS MUST BE ADDED TO THE LOAD TO BE LIFTED.

\*CAPACITIES APPEARING ABOVE THE BOLD LINE ARE BASED ON STRUCTURAL STRENGTH AND LIFTING SHOULD NOT BE RELIED UPON AS A CAPACITY LIMITATION.