

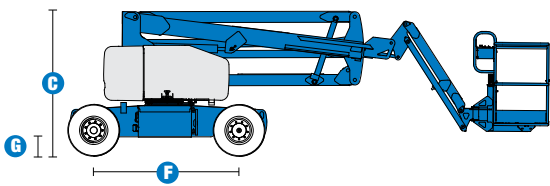
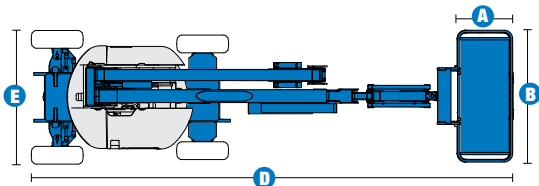


SELF-PROPELLED ARTICULATING BOOMS

Z™-45/25J DC



Specifications



MODEL Z™-45/25J DC		
MEASUREMENTS	Metric	US
Working height maximum*	15.92 m	51 ft 8 in
Platform height maximum	13.92 m	45 ft 8 in
Horizontal reach maximum	7.65 m	25 ft 1 in
Up and over clearance maximum	7.04 m	23 ft 1 in
A Platform length	0.76 m	2 ft 6 in
B Platform width	1.83 m	6 ft
C Height - stowed	2.00 m	6 ft 7 in
D Length - stowed	6.83 m	22 ft 5 in
E Width	1.79 m	5 ft 10 in
F Wheelbase	2.03 m	6 ft 8 in
G Ground clearance - centre	0.24 m	9.5 in

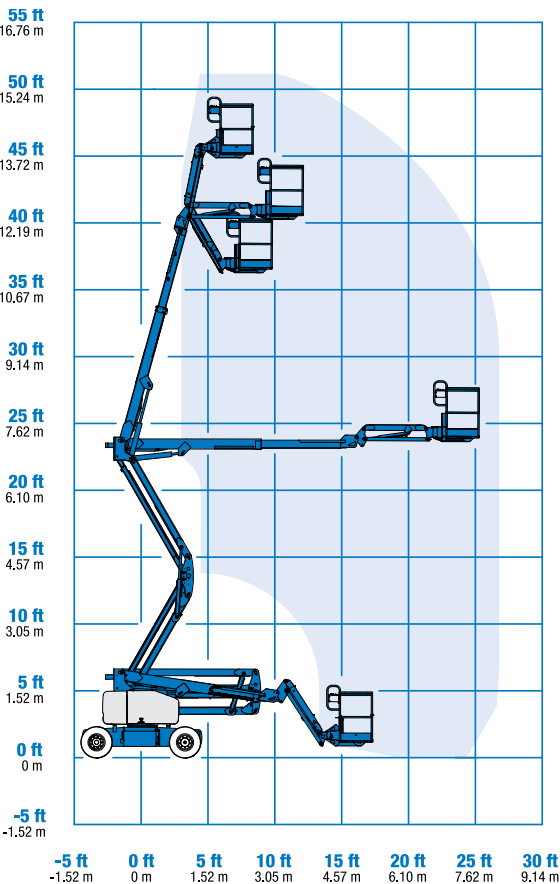
PRODUCTIVITY		
Lift capacity	227 kg	500 lbs
Platform rotation	160°	160°
Vertical jib rotation	135°	135°
Turntable rotation	355° non-continuous	
Turntable tailswing	zero	zero
Drive speed - stowed	4.8 km/h	3.0 mph
Drive speed - raised**	1.1 km/h	0.68 mph
Gradeability - stowed***	30%	30%
Turning radius - inside	1.83 m	6 ft
Turning radius - outside	4.26 m	14 ft
Controls	24V DC proportional	
Tyres - foam-filled	9 x 14.5 in	9 x 14.5 in

POWER		
Power source - DC	48V DC (eight 6V batteries, 350 Ah capacity)	
Auxiliary power unit	24V DC	24 V DC
Hydraulic tank capacity	30.3 L	8 gal

WEIGHT****		
	7,394 kg	16,300 lbs

STANDARDS COMPLIANCE	ANSI A92.5, CSA B354.4, CE Compliance, AS 1418.10
----------------------	---

RANGE OF MOTION Z™-45/25J DC



* The metric equivalent of working height adds 2 m to platform height. U.S. adds 6 ft to platform height.
** In lift mode (platform raised), the machine is designed to operate on firm, level surfaces only.
*** Gradeability applies to driving on slopes. See operator's manual for details regarding slope ratings.
**** Weight will vary depending on options and/or country standards.



SELF-PROPELLED ARTICULATING BOOMS

Z™-45/25J DC



Features

STANDARD FEATURES	OPTIONS & ACCESSORIES
MEASUREMENTS <ul style="list-style-type: none">Z™-45/25J DC<ul style="list-style-type: none">15.92 m (51 ft 8 in) working height7.65 m (25 ft 1 in) horizontal reach6.73 m (22 ft 1 in) up and over clearanceUp to 227 kg (500 lbs) lift capacity PRODUCTIVITY <ul style="list-style-type: none">1.83 m (6 ft) steel platform1.52 m (5 ft) jib boom with 135° working range2WDIndustrial non-marking foam-filled tyresSelf-leveling platformHydraulic platform rotationFully proportional controlsThumb rocker steerDrive enableHornHour meterTilt alarm355° non-continuous turntable rotationZero tailswingAlarm packageDual flashing beacons POWER <ul style="list-style-type: none">48 V deep cycle battery pack24 V DC auxiliary powerUniversal 30A battery smart charger	PRODUCTIVITY <ul style="list-style-type: none">Platform swing gateHalf-mesh platform inserts with swing gatePlatform top auxiliary railAir line to platformFire resistant hydraulic oilBiodegradable hydraulic oilStandard aircraft protection package*Deluxe aircraft protection package*Tool trayFluorescent tube caddyPlatform work lightsLockable platform control box coverTow package1.22 or 1.52 m (4 or 5 ft) steel platform POWER OPTIONS <ul style="list-style-type: none">Battery charge indicator-BCILow voltage interrupt with BCIRetained key selector switch240 V power to platform

* Reduces platform capacity to 440 lbs (only available on Jib models)



Genie Australia – Toll free number 1800 788 633

Brisbane (Head Office) 33 Kimberley Street Darra QLD 4076	Sydney 74 Glendenning Road Glendenning NSW 2761	Melbourne 374 Hammond Road Dandenong VIC 3175	Perth 126 Sheffield Road Welshpool WA 6106
--	--	--	---

Genie United States Distributed by:

18340 NE 76th Street
P.O. Box 97030
Redmond, Washington
98073-9730

Effective Date: April 2012. Product specifications and prices are subject to change without notice or obligation. The photographs and/or drawings in this document are for illustrative purposes only. Refer to the appropriate Operators' Manual for instructions on the proper use of this equipment. Failure to follow the Operators Manual when using our equipment or to otherwise act irresponsibly may result in serious injury or death. The only warranty applicable to our equipment is the standard written warranty applicable to the particular product and sale and we make no other warranty, express or implied. Products and services listed may be trademarks, service marks, or trade names of Terex Corporation, Terex South Dakota, Inc., and/or their subsidiaries in the USA and other countries. All rights reserved. Terex is a registered trademark of Terex Corporation in the USA and many other countries. Genie is a registered trademark of Terex South Dakota, Inc. in the USA and many other countries. ©2009 Terex Corporation.