



FASSI CRANE



F 600AXP.26

use and maintenance

XP\.. DEVICE (EXTRA POWER)
FROM SERIAL NUMBER *3102*

INDEX OF PARAGRAPHS

A0	CLASSIFICATION OF THE CRANE MODEL
A0.1	Technical data
B0	XP DEVICE
B0.1	Activation and instructions for use of the XP/V device
B1	IMC AND ADC DEVICES
C0	CAPACITY PLATES

This supplementary use and maintenance Booklet is an up-date of the Use and Maintenance manual for the crane F540A supplied with the XP device on request.

(!) WARNING (!)

Some of the subjects contained are an integration of what reported in the manual; read carefully this supplementary manual paying attention to the paragraphs or contesst of the manual before operating the crane.



A0 CLASSIFICATION OF THE CRANE MODEL

CLASSIFICATION OF
THE CRANE MODEL
F 600AXP.26

A0

The design of this crane has been carried out in respect of fatigue test classification **H1B3** of the **EN12999** norm.

The crane can operate, intermittently, with lifting devices other than the hook.

The dimensions and the capacity of the implements must be proportioned with crane performances.

A0.1 Technical data

F 600AXP.26									
Lifting capacity	Standard reach	Hydraulic extension	Rotation arc	Rotation torque	Working pressure	Pump capacity	Oil tank capacity	Crane weight	Max. working pressure on the outrigger (Φ 210)
52 tm 510,1 kNm 376.117 lbf.ft	16,55 m 54' 3" ft/in	11,95 m 39' 2" ft/in	360°	4,59 tm 45 kNm 33.200 lbs.ft	32,5 MPa 4.714 psi	70 l/min 18,49 gal/min	200 l 52,83 gals	5900 kg 13.007 lbs	63 daN/cm2 913,74 psi



B0 XP DEVICE

XP DEVICE
GR5_XP

B0

This device can be activated only through the push-button panel of the radio remote control, see Par. 14 “Controls to operate the crane”.

The XP device works on the principle of an increase in the lifting capacity of the crane with a reduction in the dynamic effect achieved with a reduction in the speed of certain movements.

The XP device can be used, not just to increase the capacity crane:

- but to exploit the reduction in the speed when moving a load that must be positioned with precision.
- and to exploit the variation in the lifting moment limiting device adjustment parameters to exit from a critical situation when moving the load (overcoming of the 90% or intervention of the lifting moment limiting device).

(!) ATTENTION (!)

The rating plates relevant to the XP device are marked F....XP.

B0.1 Activation and instructions for use of the XP/V device

You operate the XP device only from the console of the radio remote control by using the appropriate selector (fig. 1).

SCANRECO RADIO REMOTE CONTROL

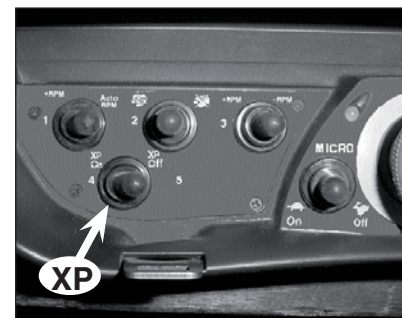


fig. 1

RScanreco radio remote control

You operate on the XP/ON-XP/OFF selector (fig. 1) on the XP/ON position.

The activation of the XP device is indicated with the mark XP displayed up on the right of the control panel.

(!) WARNING (!)

It is recommended to release the crane controls (levers of the control console in neutral position) before activating or desactivating the **XP** device because of the variation of speed is considerable and immediate; carefully operate the controls.

See paragraph 14 of the USE AND MAINTENANCE MANUAL for details of “Controls to operate the crane”

See paragraphes 16 of the USE AND MAINTENANCE MANUAL for details of “Lifting moment limiting device”

The activation of the XP device on cranes with free rotation or with rotation limiting device produces:

- an increase in the capacity of the crane
- a reduction in the speed of rotation without increasing the torque
- a reduction in the speed of lifting and lowering the inner boom, outer boom and of the jib boom (when fitted)
- speed of the extension booms, bucket and the rotator.
- allows normal speed and lifting capacity of the winch.



The activation of the XP device on cranes with lifting moment limiting device for two sectors produces:

- in the “stable” zone working area, the same effect for crane with free rotation
- in the “unstable” zone working area, a reduction in the speed without the increase in capacity.

Activation of the XP device when the 90% of the capacity has been reached

- the yellow light on the "led" band of the push-button panel goes off
- allowing the manoeuvres that increase the lifting moment, you then have the repeat of the yellow "led" band and red "led" band of the warning lights again.

Activation of the XP device after the lifting moment limiting device block

A) The block continues:

- the crane must be reset

B) The red "led" band of the warning light switches off and the yellow "led" band of the warning light usually comes on.

- the crane controls are enabled. Acting with the manoeuvres that increase the lifting moment, you get the yellow and red warning lights again.

B1 IMC AND ADC DEVICES

The IMC (Integrated Machine Control) device is the connection of the three following devices:

- lifting moment limiting device “ELECTRONIC” (LME)
- ADC device
- radio remote control for the outriggers.

The ADC (Automatic Dynamic Control) device controls the dynamics of the movements providing the maximum speed available subject to the applied load.

XP DEVICE
GR5_XP B1



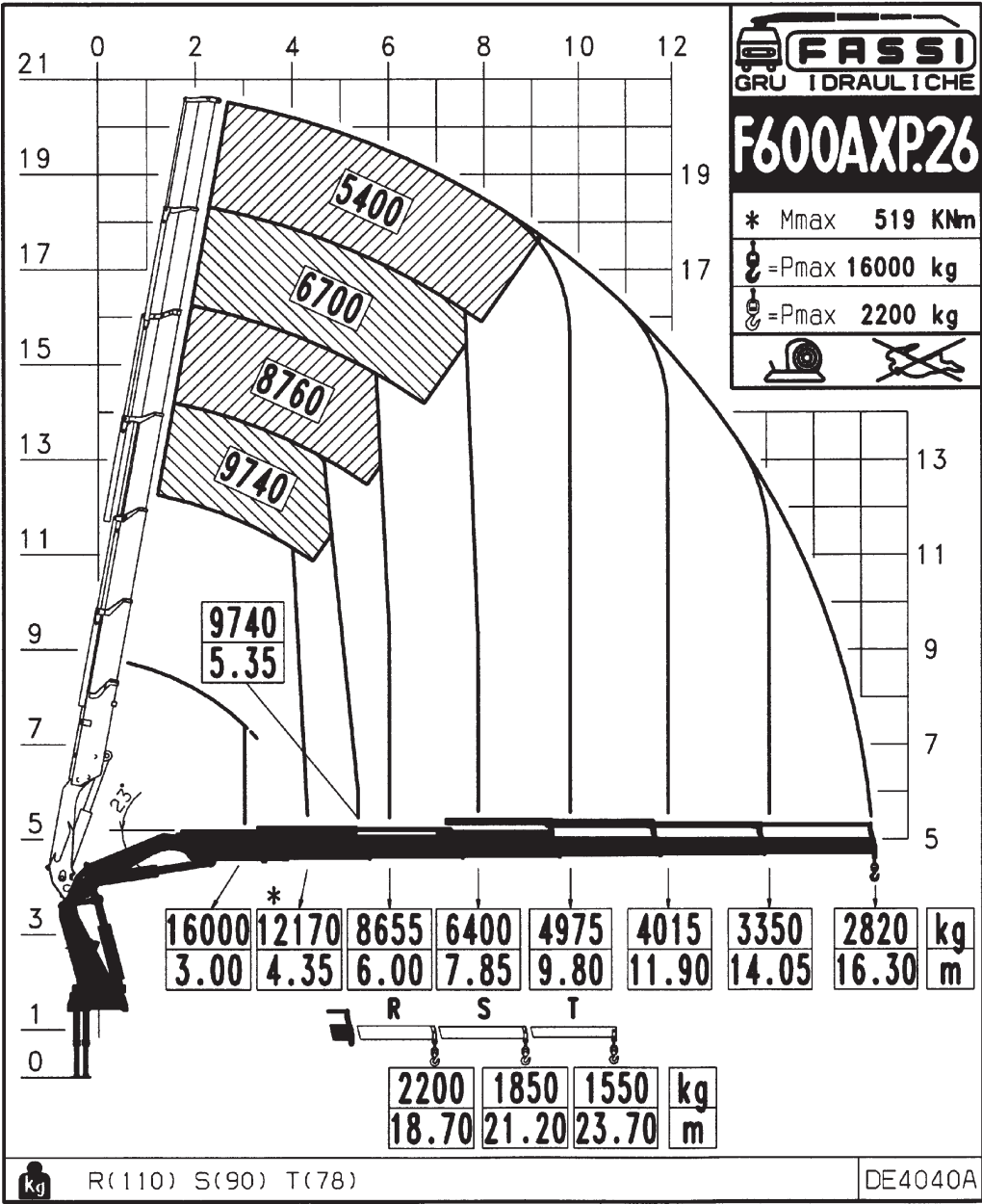
C0 CAPACITY PLATES

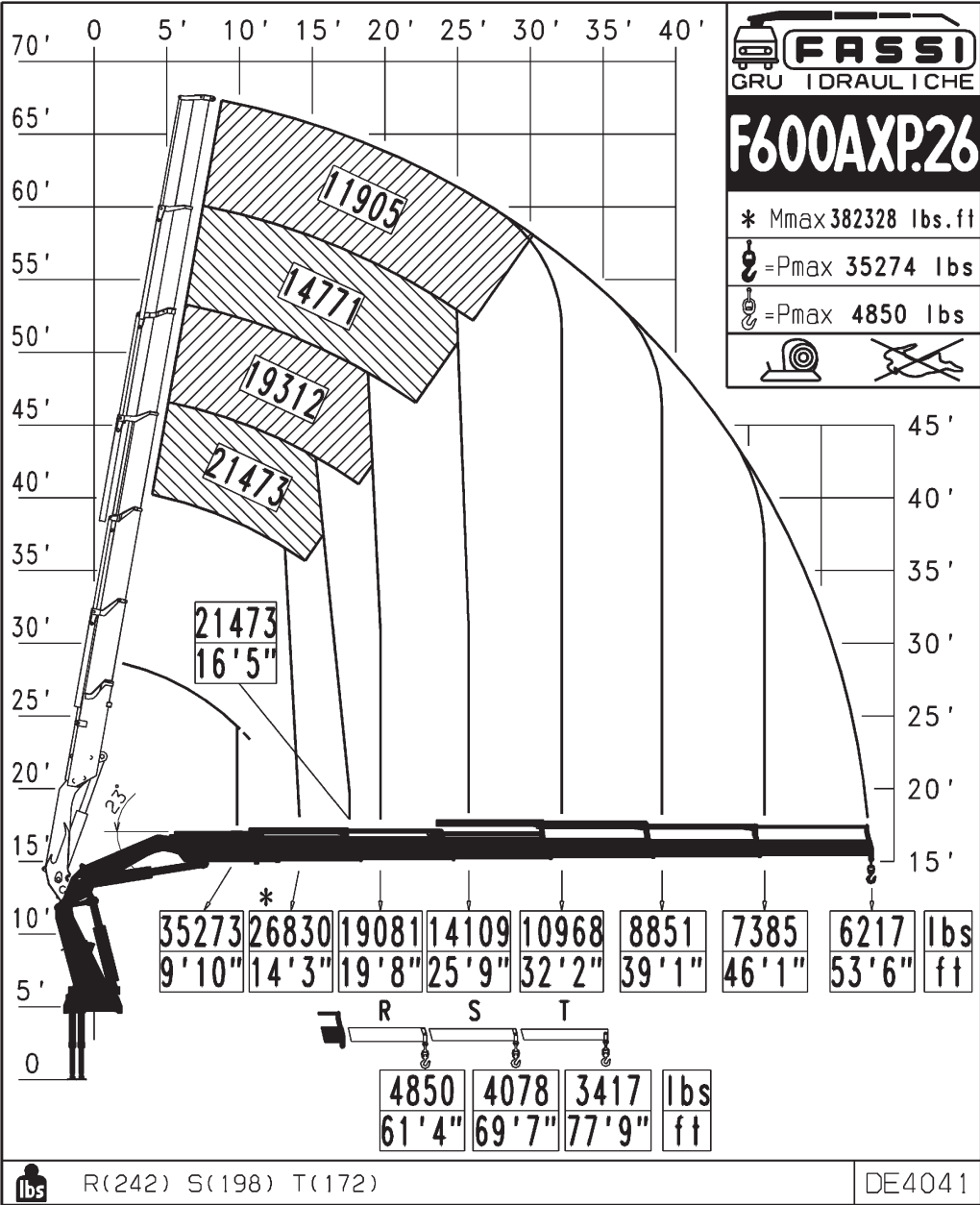
CAPACITY PLATES
F 600AXP.26 C0

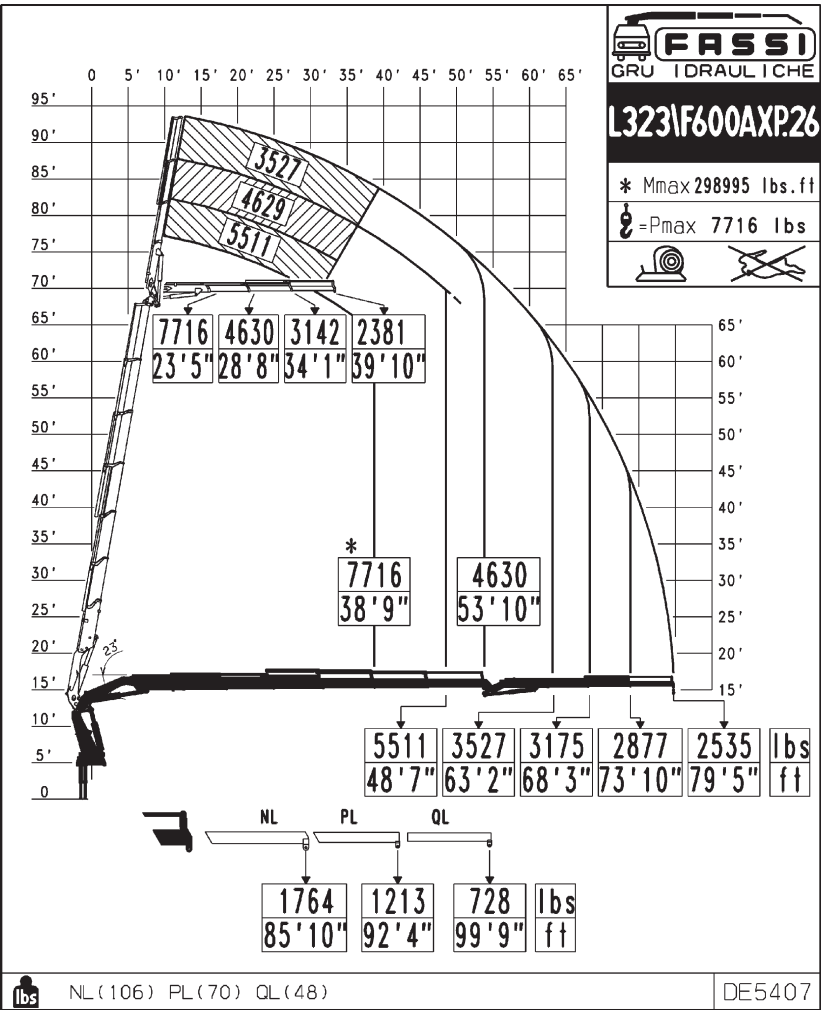
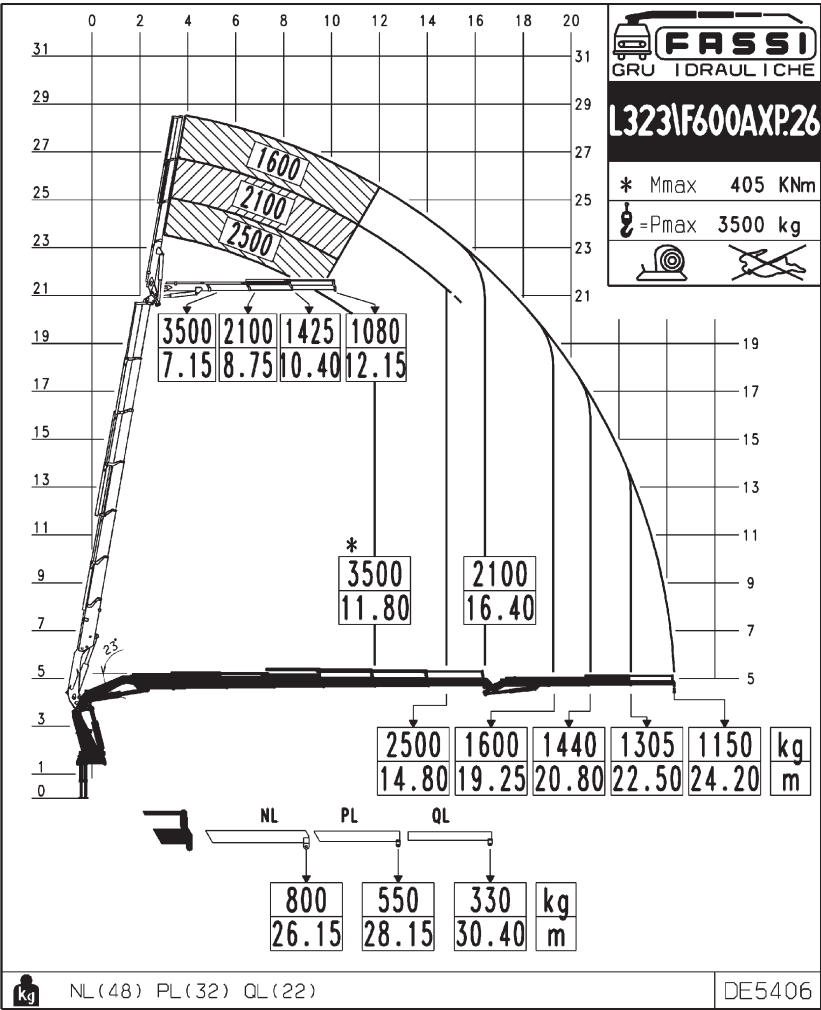
The represented plates refer to the nominal design capacities.

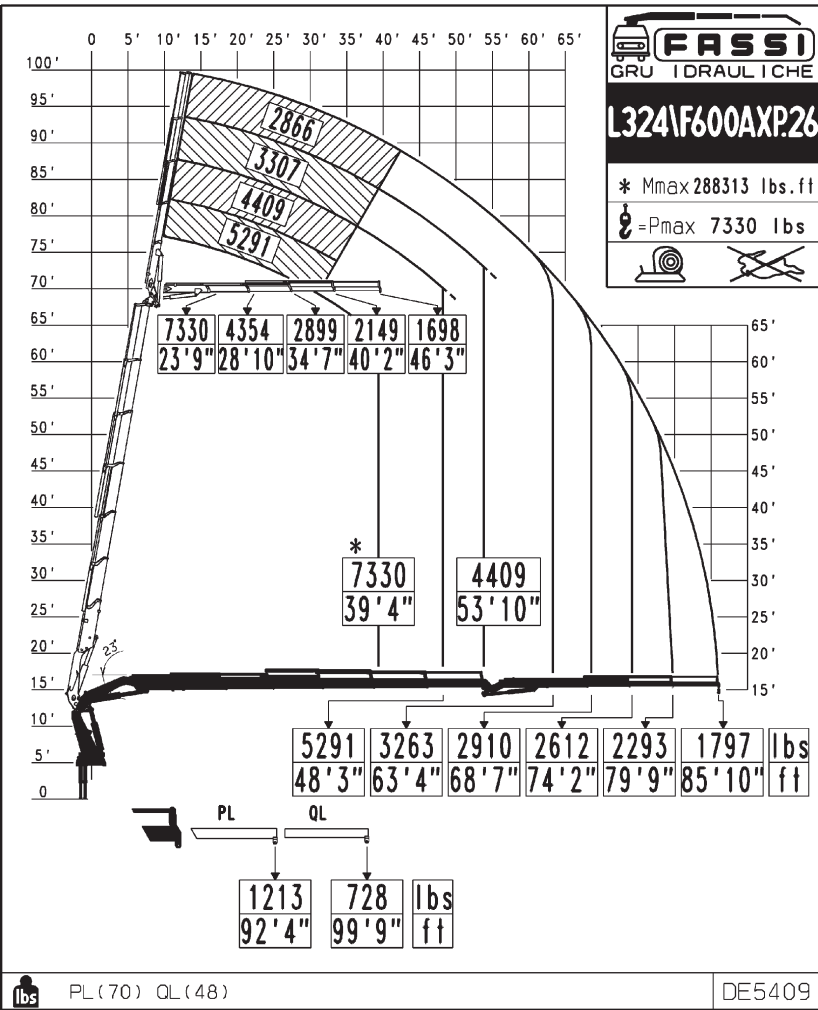
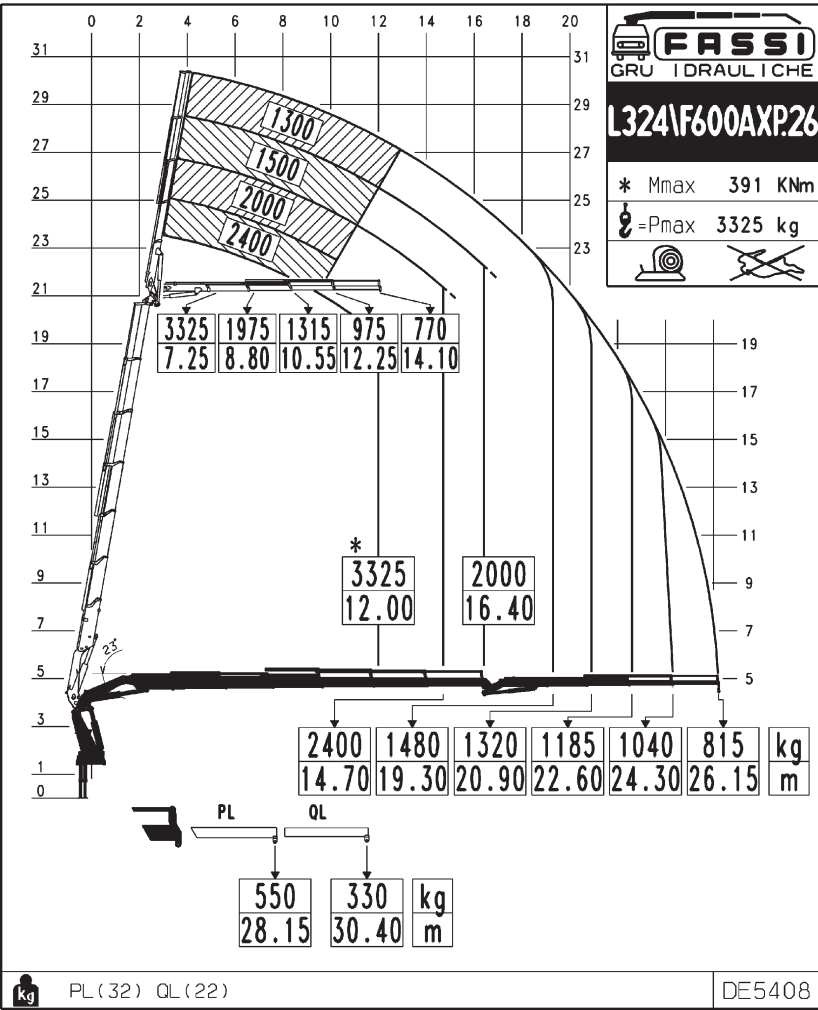
(!) WARNING (!)

If the capacities are downgraded or partially reduced (e.g. sector in front of vehicle cab) capacity plates must be applied in line with the final test figures.











C0



