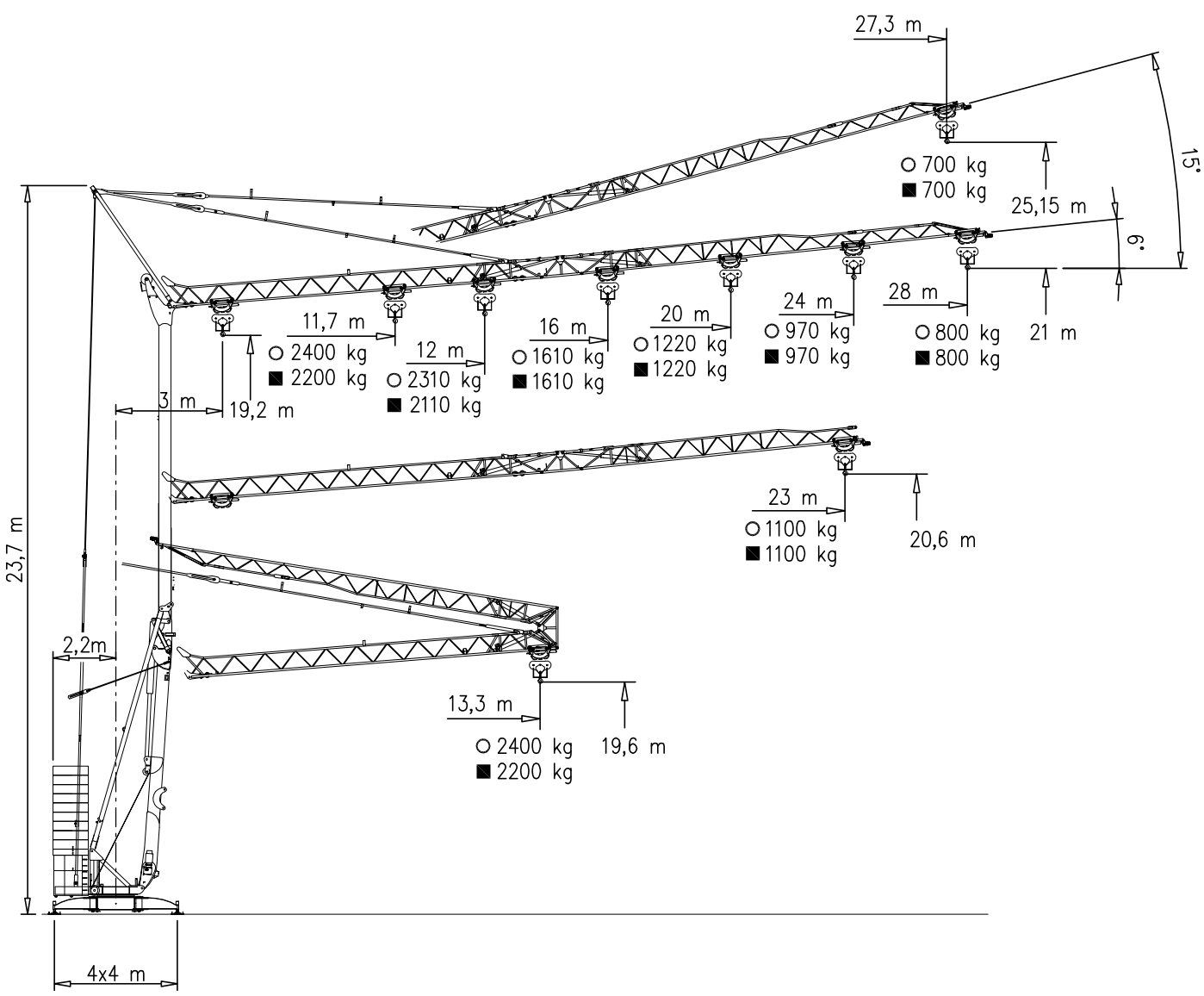
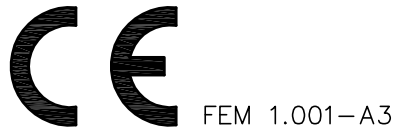


828 RBI-V1



- TRIPHASE - 400 V
- MONOTRIPHASE - 230/400 V

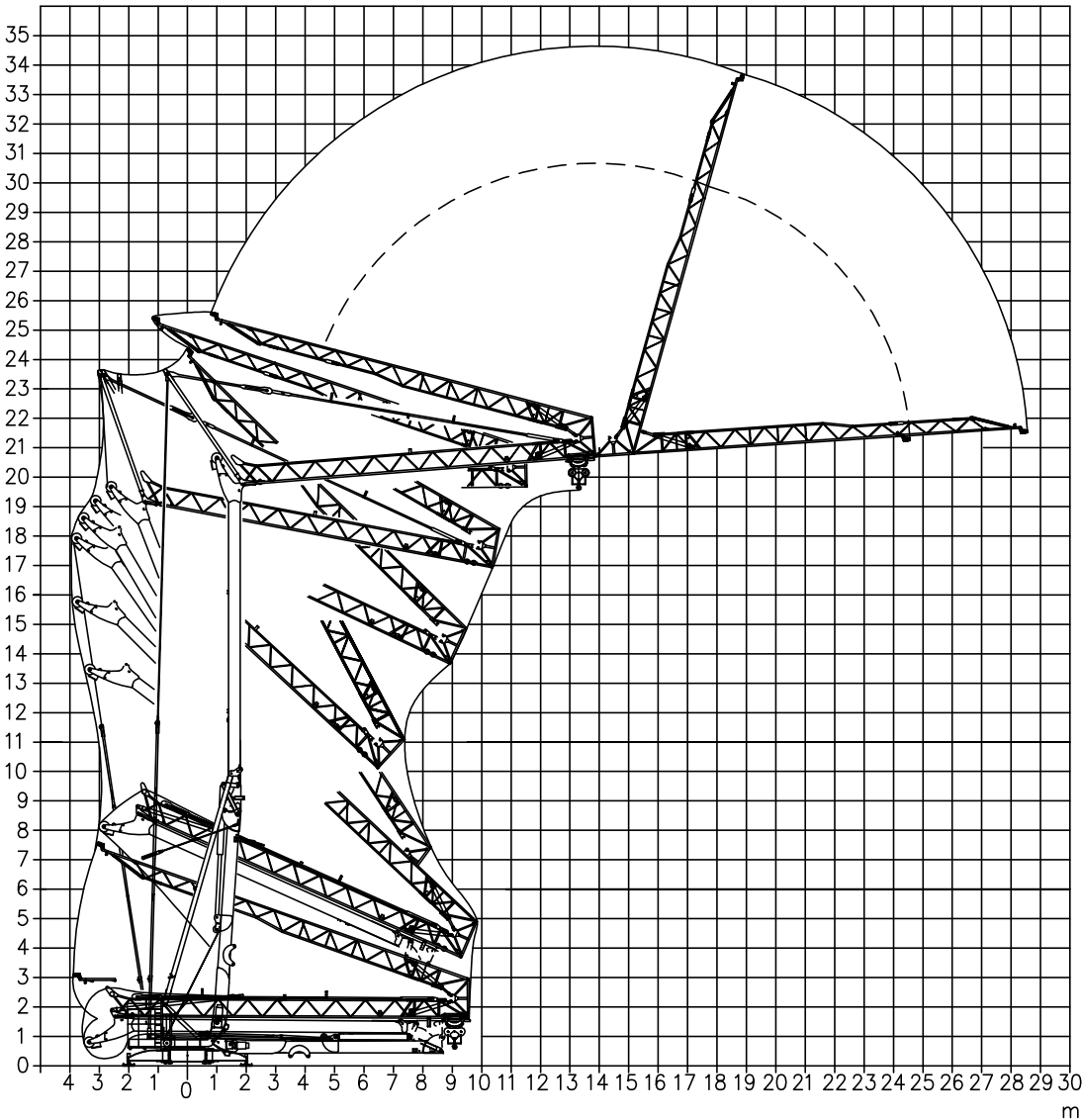
GRU A MONTAGGIO RAPIDO
GRUE A MONTAGE RAPIDE
GRUA DE RAPIDO MONTAJE
GRUA DE MONTAGEM RAPIDA
QUICK SELFERECTING CRANE
HYDRAULISCHER SCHNELLMONTAGEKRAN



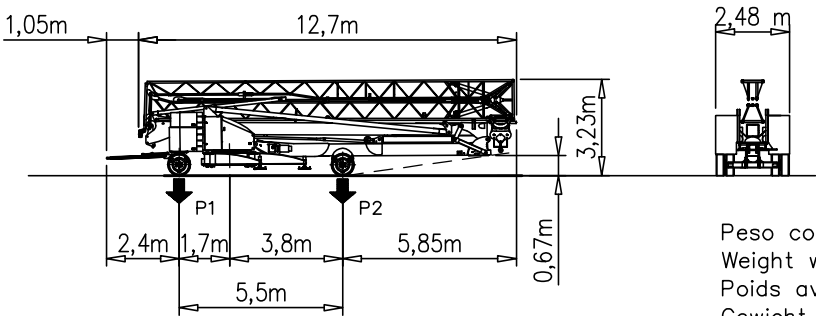


828 RBI-V1

Montaggio – Montage – Erection – Montage – Montaje – Montagem



Trasporto – Transport – Transport – Transport – Transporte – Transporte











P1	Kg	7650
P2	Kg	8130
Ptot	Kg	15780

Peso con N°2 A+ N°2 B+ assali
Weight with N°2 A+ N°2 B+ transport axles
Poids avec N°2 A+ N°2 B+ essieux de transport
Gewicht mit N°2 A+ N°2 B+ transportachsen
Peso con N°2 A+ N°2 B+ ejes de transporte
Peso com N°2 A+ N°2 B+ eixos de transporte

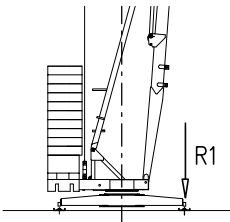


828 RBI-V1

Curve di carico – Courbes de charges – Load diagrams – LastKurven – Curvas de cargas

 MonoTriphase	☐ 230/400V	<table><tr><td>3</td><td>23</td><td>27,3</td></tr><tr><td>700</td><td>700</td><td>700</td></tr></table> m kg	3	23	27,3	700	700	700	 Triphase	☐ 400V	<table><tr><td>3</td><td>23</td><td>27,3</td></tr><tr><td>700</td><td>700</td><td>700</td></tr></table> m kg	3	23	27,3	700	700	700			
3	23	27,3																		
700	700	700																		
3	23	27,3																		
700	700	700																		
 MonoTriphase	☐ 230/400V	<table><tr><td>3</td><td>11,7</td><td>12</td><td>16</td><td>20</td><td>24</td><td>28</td></tr><tr><td>2200</td><td>2200</td><td>2110</td><td>1610</td><td>1220</td><td>970</td><td>800</td></tr></table> m kg					3	11,7	12	16	20	24	28	2200	2200	2110	1610	1220	970	800
3	11,7	12	16	20	24	28														
2200	2200	2110	1610	1220	970	800														
 Triphase	☐ 400V	<table><tr><td>3</td><td>11,7</td><td>12</td><td>16</td><td>20</td><td>24</td><td>28</td></tr><tr><td>2400</td><td>2400</td><td>2310</td><td>1610</td><td>1220</td><td>970</td><td>800</td></tr></table> m kg					3	11,7	12	16	20	24	28	2400	2400	2310	1610	1220	970	800
3	11,7	12	16	20	24	28														
2400	2400	2310	1610	1220	970	800														
 MonoTriphase	☐ 230/400V	<table><tr><td>3</td><td>12,7</td><td>16</td><td>20</td><td>23</td><td></td><td></td></tr><tr><td>2200</td><td>2200</td><td>1810</td><td>1375</td><td>1100</td><td></td><td></td></tr></table> m kg					3	12,7	16	20	23			2200	2200	1810	1375	1100		
3	12,7	16	20	23																
2200	2200	1810	1375	1100																
 Triphase	☐ 400V	<table><tr><td>3</td><td>12,7</td><td>16</td><td>20</td><td>23</td><td></td><td></td></tr><tr><td>2400</td><td>2400</td><td>1810</td><td>1375</td><td>1100</td><td></td><td></td></tr></table> m kg					3	12,7	16	20	23			2400	2400	1810	1375	1100		
3	12,7	16	20	23																
2400	2400	1810	1375	1100																
 MonoTriphase	☐ 230/400V	<table><tr><td>3</td><td>13,3</td></tr><tr><td>2200</td><td>2200</td></tr></table> m kg					3	13,3	2200	2200										
3	13,3																			
2200	2200																			
 Triphase	☐ 400V	<table><tr><td>3</td><td>13,3</td></tr><tr><td>2400</td><td>2400</td></tr></table> m kg					3	13,3	2400	2400										
3	13,3																			
2400	2400																			

Reazioni – Reactions – Réactions – Eckdrücke – Reacciones – Reações



R1 ● 16 t ■ 12 t

▲ 9,4 t ○ 18,1 t

{ N°2 A=3500Kg (1750Kgx2)
N°2 B=2100Kg (1050Kgx2)
N°10 C=12500Kg (1250Kgx10)

● Reazioni in servizio	● Reactions in service	● Réactions en service
■ Reazioni fuori servizio	■ Reactions out of service	■ Réactions hors service
▲ Peso della gru senza assali	▲ Dead weight without transport axles	▲ Poids de construction sans essieux
○ Peso zavorra rotante	○ Ballast weight	○ Poids du lest
● Reaktionskräfte in betrieb	● Reacciones en servicio	● Em serviço
■ Reaktionskräfte außer betrieb	■ Reacciones fuera de servicio	■ Fora de serviço
▲ Kontruktionsgewicht ohne transportachse	▲ Peso de la grua sin tren de transporte	▲ Peso de la grua sem carro de transporte
○ Ballastgewicht	○ Peso de lastre	○ Peso de lastre rotativo



828 RBI-V1

Meccanismi – Mechanisms – Mécanismes – Antriebe – Mecanismos

Triphase – 400V	V9.32 Sollevamento Hoisting Levage Heben Elevaciòn Elevaçao							V9.32 6.6 Kw (9 Hp) 17.5 kVA
		m/min	4	13	32	40		
		t	2.4	2.4	1.0	0.6		
Carrello Trolleying Distribution Katzfahren Distribuciòn Distribuição			1a	0 → 30	m/min	2.2 kW (3 Hp)		
			1a					
			2a					
Rotazione Slewing Orientation Schwenken Orientaciòn Rotaçao			1a	0 → 0.8	giri/min tr/min rp/min	2.2 kW (3 Hp)		
			2a					
			3a					

MonoTriphase – 230/400V	V9.32 Sollevamento Hoisting Levage Heben Elevaciòn Elevaçao							V9.32 6.6 Kw (9 Hp) 17.5 kVA
		m/min	4	11	25	35		
		t	2.2	2.2	1.0	0.6		
Carrello Trolleying Distribution Katzfahren Distribuciòn Distribuição			1a	0 → 30	m/min	2.2 kW (3 Hp)		
			1a					
			2a					
Rotazione Slewing Orientation Schwenken Orientaciòn Rotaçao			1a	0 → 0.8	giri/min tr/min rp/min	2.2 kW (3 Hp)		
			2a					
			3a					

Rete elettrica – Réseau – Mains supply – Netzstrom – Red – Alimentação	230/400V – 50 Hz
Potenza elettrica necessaria – Puissance électrique nécessaire Necessary electric power – Anschlusswert – Potencia electrica necesaria	3Hp – 17,5 kVA 1Hp – 2 kVA

 FMgru s.r.l. via Emilia 11–29010 Pontenure PC ITALY tel. 0523/510446 ric.aut. fax 0523/510365 www.fmgru.it e-mail: info@fmgru.com	FEM 1.001–A3 2000/14/CE	
--	----------------------------	--



Documento commerciale non contrattuale
Per tutte le informazioni tecniche riferirsi
alle corrispondenti istruzioni

Unverbindliches Vertriebsdokument.
Für technische Informationen, siehe die
entsprechenden Anweisungen.

This commercial document is not legally
binding. For any technical information, please
refer to the corresponding instructions.

Documento comercial no contractual
Para cualquier información técnica,
ver la noticia correspondiente.

Code: 15ICA37B45A0			
Ed.	Data	Rev	Data
1	18.09.06	3	07.06.13