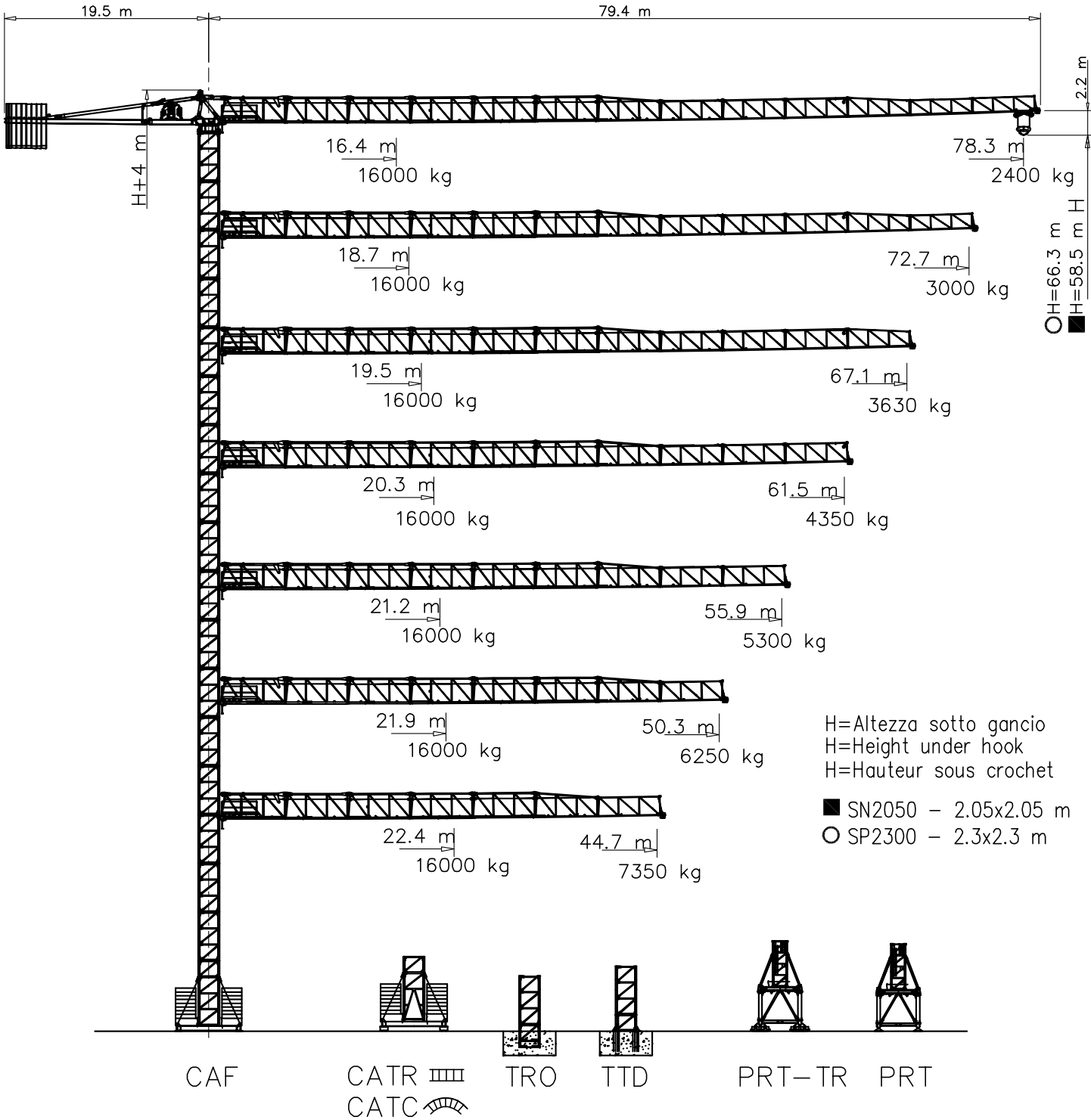


2675 TLX

P16


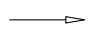




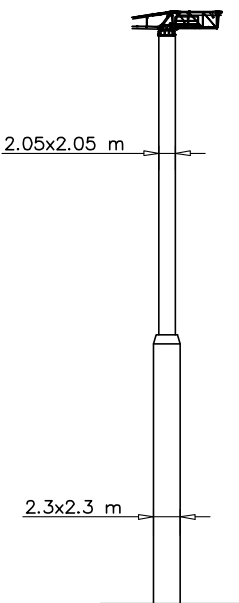
2675 TLX

Torre/Reazioni – Masts/Reactions – Mat/Réactions – Maste/Eckdrücke – Mästil/Reacciones – Tramo/Reacções

SN2050

 20 m  78.3 m

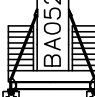
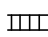

Torre/Masts/Mat/Maste/Mästil/Tramo																		
<div><div>TRO</div><div></div><div><div>R3</div><div>M</div></div></div> <div><div>TTD</div><div></div><div><div>R3</div><div>M</div></div></div>	H[m]	4f/4f BF117	4f/4f BF052	4f/4f BF039	4f/2f SB117	4f/2f SB052	4f/2f SB039	2f/2f ST117	2f/2f ST052	2f/2f ST039	2f/2f STB117	2f/2f STB039	2f/2f RA039	4f/2f SBB039	4f/2f SBB117	4f/4f BFB117	4f/4f BFB039	
	53.3	1	2	2			1			5								
	52	2	1		1			1										
	52	3			1				1									
	52		6			1			3									
	*	54.6											5	1	1			7
	*	54.6											4	1	1		1	5

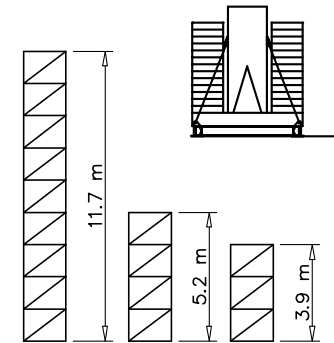


Torre/Masts/Mat/Maste/Mästil/Tramo																		
<div><div><div>BA052</div><div></div><div><div>6x6 m</div><div>R2</div></div></div><div>CAF</div></div>	H[m]	4f/4f BF117	4f/4f BF052	4f/4f BF039	4f/2f SB117	4f/2f SB052	4f/2f SB039	2f/2f ST117	2f/2f ST052	2f/2f ST039	2f/2f STB117	2f/2f STB039	2f/2f RA039	4f/2f SBB039	4f/2f SBB117	4f/4f BFB117	4f/4f BFB039	
	58.5	1	2	2			1			5								
	57.2	2	1		1			1										
	57.2	3			1				1									
	57.2		6			1			3									
	*	59.8											5	1	1			7
	*	59.8											4	1	1		1	5

H=0–44 m	
R1	135 t
R2	140 t
R3	92 t
M	498 tm

H=45–62 m	
R1	174 t
R2	181 t
R3	119 t
M	637 tm

Torre/Masts/Mat/Maste/Măstil/Tramo																	
<div><div><div><div>BA052</div></div><div></div><div><div>6x6 m</div><div>R1</div></div></div><div>CATR </div><div>CATC </div><div>* 52</div><div>* 52</div></div>	H[m]	4f/4f BF117	4f/4f BF052	4f/4f BF039	4f/2f SB117	4f/2f SB052	4f/2f SB039	2f/2f ST117	2f/2f ST052	2f/2f ST039	2f/2f STB117	2f/2f STB039	2f/2f RA039	4f/2f SBB039	4f/2f SBB117	4f/4f BFB117	4f/4f BFB039
	50.7	3			1					1							
	47.9	2				1				2							
	49.4		5			1			4								



Peso zavorra–Ballast weight
Ballastgewicht–Peso de lastre

H	Tot.
0–44 m	102320 kg
45–59 m	132740 kg





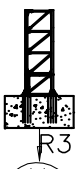
AFM Gru

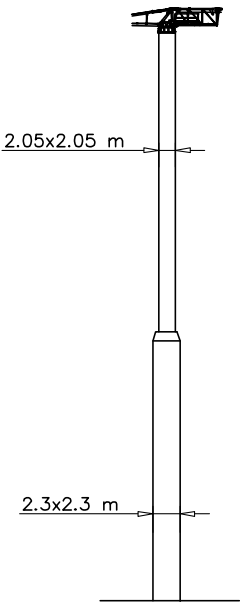
2675 TLX

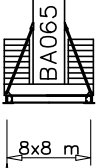

Torre/Reazioni – Masts/Reactions – Mat/Réactions – Maste/Eckdrücke – Mästil/Reacciones – Tramo/Reacções

SP2300

 20 m —> 78.3 m

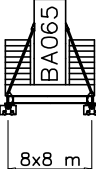

Torre/Masts/Mat/Maste/Mästil/Tramo														
 TRO R3 M	H[m]	4f/4f BFL117	4f/4f BF117	4f/4f BF052	4f/4f BF039	4f/4f SB117	4f/4f SB052	4f/4f SB039	4f/4f ST117	4f/4f ST052	4f/4f ST039	4f/4f STB117	4f/4f STB039	4f/4f RA039
	58.5								5					
	57.2									11				
	41.6									5	4			
 TTD R3 M														
	58.5											6	1	
	58.5											6	1	



Torre/Masts/Mat/Maste/Mästil/Tramo														
 BA065 8x8 m R2	H[m]	4f/4f BFL117	4f/4f BF117	4f/4f BF052	4f/4f BF039	4f/4f SB117	4f/4f SB052	4f/4f SB039	4f/4f ST117	4f/4f ST052	4f/4f ST039	4f/4f STB117	4f/4f STB039	4f/4f RA039
	65								5					
	58.5									10				
	48.1									5	4			
 CAF														
	65											6	1	
	65											6	1	

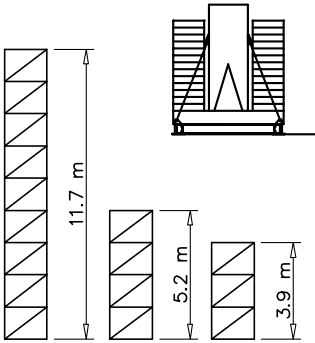
H=0–49 m	
R1	141 t
R2	152 t
R3	128 t
M	775 tm

H=50–74 m	
R1	181 t
R2	190 t
R3	160 t
M	973 tm

Torre/Masts/Mat/Maste/Mästil/Tramo														
 BA065 8x8 m R1	H[m]	4f/4f BFL117	4f/4f BF117	4f/4f BF052	4f/4f BF039	4f/4f SB117	4f/4f SB052	4f/4f SB039	4f/4f ST117	4f/4f ST052	4f/4f ST039	4f/4f STB117	4f/4f STB039	4f/4f RA039
	57.2								4		1			
	55.9									8	2			
	40.3									5	2			
 CATR CATC														
	57.2											4	1	
	57.2											4	1	

Peso zavorra–Ballast weight
Ballastgewicht–Peso de lastre

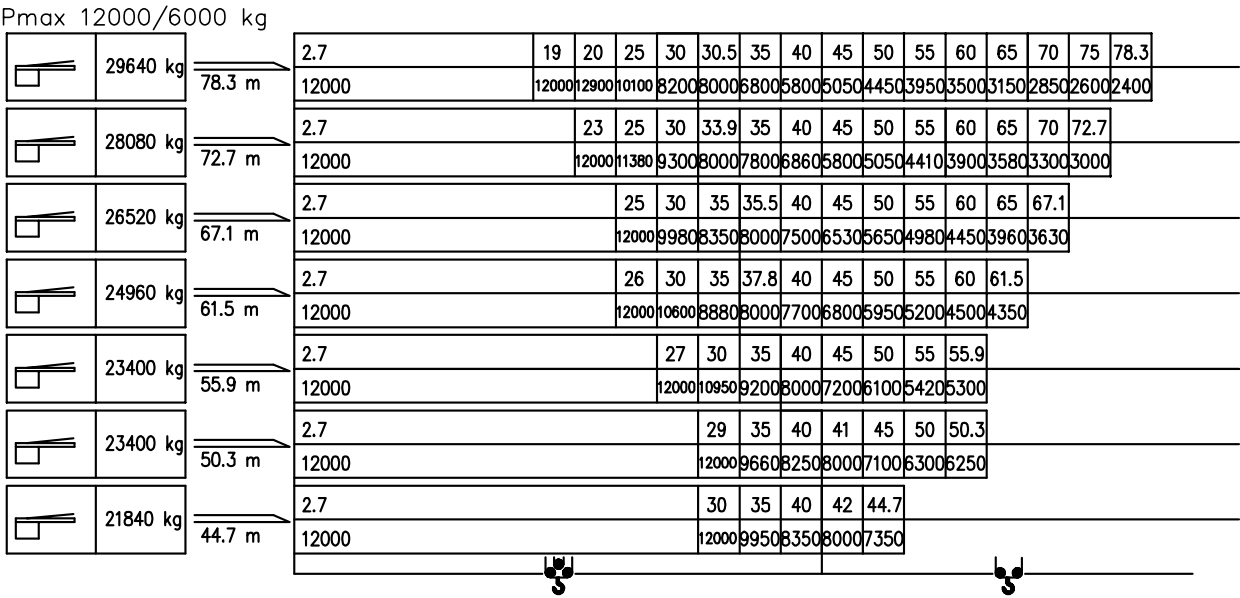
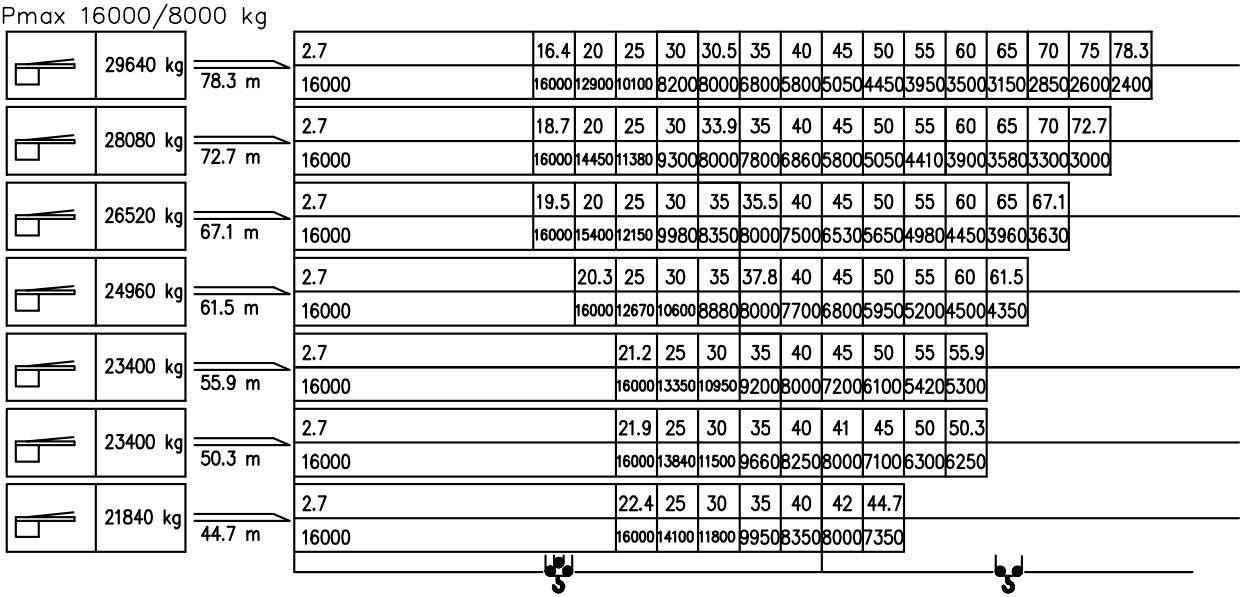
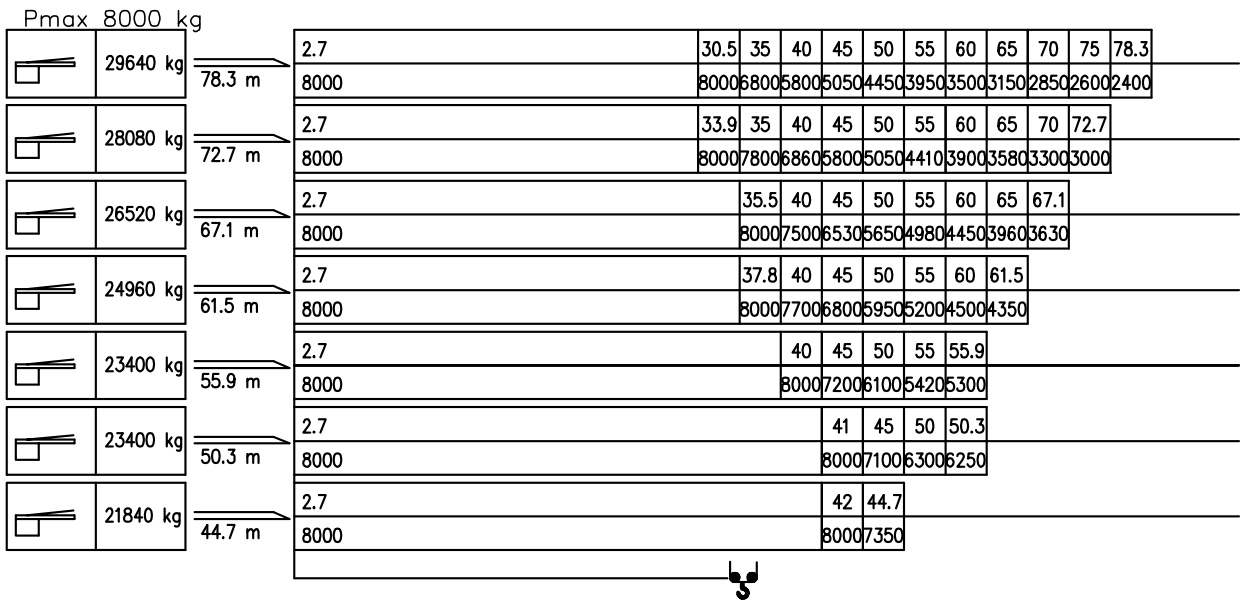
H	Tot.
0–44 m	114000 Kg
45–64 m	146000 kg

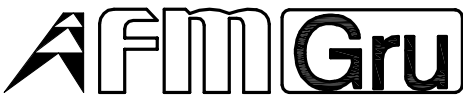




2675 TLX




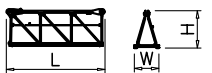
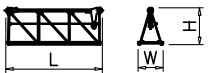



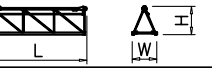
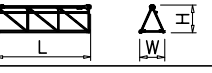

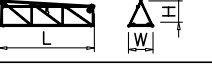
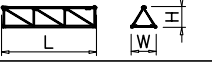
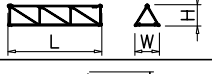
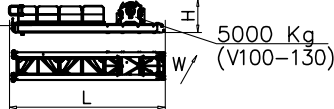

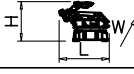
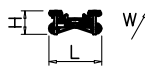
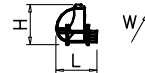
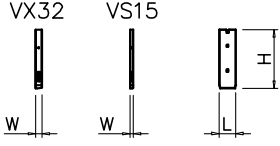
Curve di carico – Courbes de charges – Load diagrams – LastKurven – Curvas de cargas

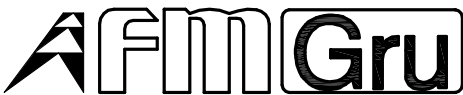




2675 TLX

PESI E INGOMBRI – PACKING LIST – LISTE DE COLISAGE – GEWICHT UND ABMESSUNGEN

Denominazione Description	Disegno Draw	Pezzi Pieces	Dimensioni-Dimensions (mm)			Peso-Weight (kg)		
			L	W	H	Unit	Total	
Elemento di braccio Jib element Elèment de èche Elemento de flecha (78 m. jib version)	n°14		1	6230	1540	2320	3737	—
	n°13		1	6000	1500	2320	2439	—
	n°12		1	5960	1500	2250	2408	—
	n°11		1	5960	1500	2230	1894	—
	n°10		1	5860	1500	2216	1633	—
	n°9		1	5875	1500	2196	1392	—
	n°8		1	5840	1500	2176	1229	—
	n°7		1	5830	1500	1730	1025	—
	n°6		1	5820	1500	1700	913	—
	n°5		1	5800	1500	1670	766	—
	n°4		1	5775	1500	1600	610	—
	n°3		1	5740	1500	1600	475	—
	n°2		1	5736	1500	1280	377	—
	n°1 con punta braccio		1	6000	1500	1280	330	—
Contorbraccio completo Complete counterjib Contreflèche complète Contraflecha completa	5000 Kg  5000 Kg (V100-130)	1	9500	2400	2010	10000	—	
Gruppo girevole Slewing group Table tournante Grupo giratorio	SN2050 	1	3035	2230	2370	9000	—	
	SP2300 	1	3035	2230	2370	9500	—	
Carrello Trolley Chariot Carretilla	P16 	1	1970	1910	815	600	—	
Ballatoio con cabina Access balcony with cabin Porte cabine Balcón corrido con cabina		1	2500	2150	2450	1000	—	
Blocchi contrappeso Counterweight block Contre-poids Bloques de contrapeso	VX32 VS15 	VS15	2	1000	200	3550	1560	3120
		VX32	6	1000	400	3550	3120	18720



2675 TLX

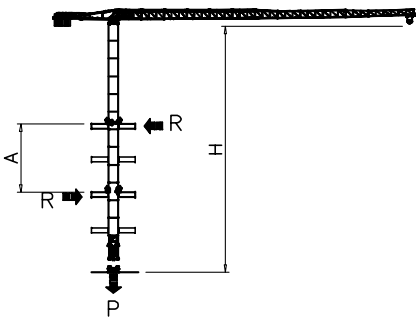
PESI E INGOMBRI – PACKING LIST – LISTE DE COLISAGE – GEWICHT UND ABMESSUNGEN

Denominazione Description	Disegno Draw	Pezzi Pieces	Dimensioni—Dimensions (mm)			Peso—Weight (kg)		
			L	W	H	Unit	Total	
Controbraccio counterjib Contrefleche Contraflecha			11500	2360	1600	6000		
Elemento di torre Mast element Elément de mature Elemento de torre		SP2300	—	3900	2360	2360	2603	—
		SN2050	—	3900	2110	2110	2320	—
		SP2300	—	5200	2360	2360	3198	—
		SN2050	—	5200	2110	2110	2850	—
		SP2300	—	11700	2360	2360	6475	—
		SN2050	—	11700	2110	2110	5790	—
		SP2300	—	3900	2360	2360	3031	—
		SN2050	—	3900	2110	2110	2710	—
		SP2300	—	5200	2360	2360	3470	—
		SN2050	—	5200	2110	2110	3350	—
		SP2300	—	11700	2360	2360	7830	—
		SN2050	—	11700	2110	2110	7000	—
		SP2300	—	3900	2360	2360	4210	—
		SN2050	—	3900	2110	2110	3770	—
		SP2300	—	5200	2360	2360	4340	—
		SN2050	—	5200	2110	2110	3880	—
	SP2300	—	11700	2360	2360	9150	—	
	SN2050	—	11700	2110	2110	8180	—	
Elemento di base Base element Mat de base Elemento de base		SP2300	1	6500	2360	2360	4550	—
		SN2050	1	5200	2260	2260	4040	—
Carro di base Base carriage Chassis de base Cruceta de base		8x8	1	11830	670	780	3340	3340
		6x6	1	8870	670	780	2500	2500
		8x8	2	5760	420	780	1600	3200
		6x6	2	4320	420	780	1200	2400
Puntoni di base Rafter Jambes de force Cabrios de base		8x8	4	6080	420	300	560	2240
		6x6	4	4560	420	300	420	1680
Elemento a perdere Disposable frame Chassis a perdre Bastidor desechable		SP2300	1	3000	2360	2360	2350	—
		SN2050	1	2600	2260	2260	2030	—
Elemento recuperabile Recoverable frame Chassis récupérable Bastidor recuperable		SP2300	1	1300	2900	2900	2100	—
		SN2050	1	1300	2620	2620	1860	—
Bogie di traslazione Driven bogie Boggie motorisee Balancin de traslaciòn		4	1160	700	600	700	2800	
Blocco zavorra di base Base ballast block Lest de base Bloque de lastre		8x8	2	8300	1200	600	11900	23800
		6x6	2	6400	1200	600	10600	21200
		8x8	—	6400	1600	300	5700	—
		6x6	—	4800	2000	300	5070	—
Corsoio di montaggio Climbing cage Cage de montage Jaula de montaje		SP2300	1	8300	3250	3000	7500	—
		SN2050	1	8300	2900	2700	6700	—



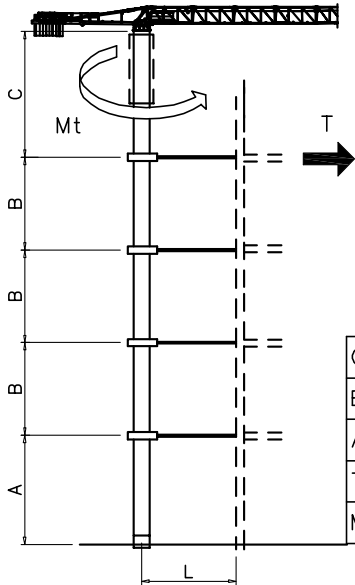
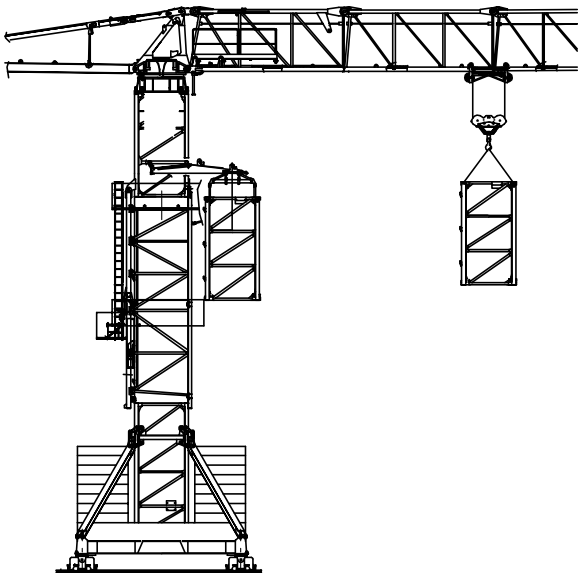
2675 TLX

GRU IN CAVEDIO – TELESOPAGE SUR DALLES – CLIMBING CRANE – KLETTERKRANE IM GEBAUDE



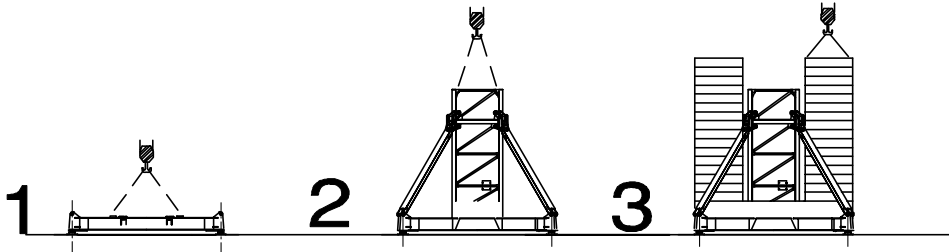
SN2050	H (m)	A (m)	R (t)	P (t)
 Apertura passaggio gru Opening for crane passing	9	45.3		
	10	42		
	11	39.3		
	12	37		
	13	35		
	14	33.4		
	15	32		
	16	30.7		
	17	29.6		
	18	28.6		
	19	27.8		
	20	27		

* SOPRALZO IDRAULICO – TELESOPABLE – EXTERNAL CLIMBING – KLETTERKRANE

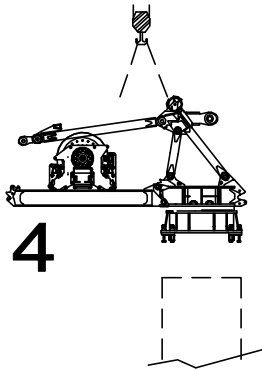


	SP2300	SN2050
C	31.2 m	31.2 m.
B	19.5 m	19.5 m
A	56 m	50 m
T	23.4 t	27.5 t
MT	26 txm	26 txm

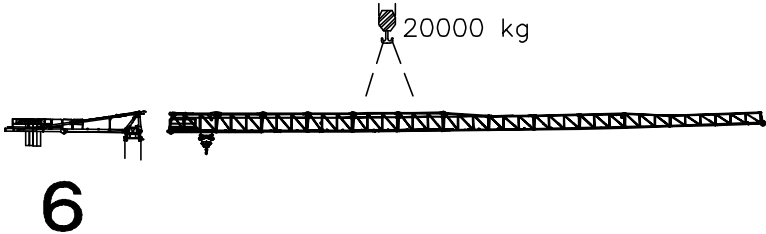
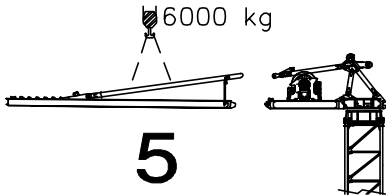
Montaggio – Montage – Erection – Montage – Montaje – Montagem

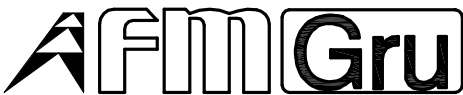


19000 kg con/with V100.100





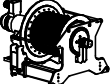
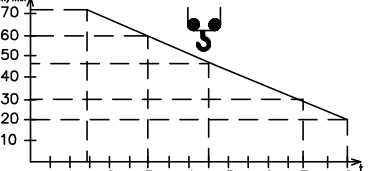
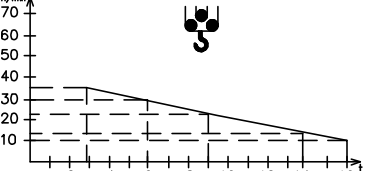
- Gruppo rotazione 9000/9500 kg
Slewing table
- Controbraccio e argano sollevamento V100.100 10000 kg
Counterjib and hoisting winch
- Controbraccio e argano sollevamento V60.60 9400 kg
Counterjib and hoisting winch





2675 TLX

Meccanismi – Mechanisms – Mécanismes – Antriebe – Mecanismos

Sollevamento Hoisting Levage Heben Elevaciòn Elevação														V75.60 55 kW 85 kVA  270 m
	m/min	2	20	31	46	60	72	1	10	15	23	30	36	
	t	8	8	7	4.5	3	1.4	16	16	14	9	6	2.8	
														

Sollevamento Hoisting Levage Heben Elevaciòn Elevação													V100.100 75 kW 110 kVA 360 m 750 m (L)
	m/min	4	21	40	64	86	100	2	10	20	32	43	50
	t	8	8	8	5.5	3.8	2	16	16	16	11	7.6	4

Sollevamento Hoisting Levage Heben Elevaciòn Elevação													V100.130 75 kW 110 kVA 360 m 750 m (L)
	m/min	6	28	54	86	115	130	3	14	27	43	57	65
	t	6	6	6	4	2.8	1.4	12	12	12	8	5.6	2.8

Carrello Trolleying Distribution Katzfahren Distribuciòn Distribuição			0 → 80 0 → 120 OP	m/min	7.5 kW	Potenza elettrica necessaria Puissance électrique nécessaire Necessary electric power Anschlusswert – Potencia
Rotazione Slewing Orientation Schwenken Orientaciòn Rotação			0 → 0,9	giri/min tr/min rp/min	16 kW @ 1200rpm n° 4 x 4 kW	
Traslazione Travelling Translation Kranfahren Traslaciòn Translação			0 → 20	m/min	9 kW	

Rete elettrica – Réseau – Mains supply – Netzstrom – Red – Rede electrica	400V – 50 Hz
---	--------------

 FMgru s.r.l. via Emilia 11–29010 Pontenure PC ITALY tel. 0523/510446 ric.aut. fax 0523/510365 www.fmgru.it e-mail: info@fmgru.com	FEM 1.001 2000/14/CE	
--	-------------------------	--



Documento commerciale non contrattuale
Per tutte le informazioni tecniche riferirsi
alle corrispondenti istruzioni

Unverbindliches Vertriebsdokument.
Für technische Informationen, siehe die
entsprechenden Anweisungen.

This commercial document is not legally
binding. For any technical information, please
refer to the corresponding instructions.

Documento comercial no contractual
Para cualquier información técnica,
ver la noticia correspondiente.

Code: 15ICA3765A0		
Ed.	Data	Rev Data
1	30.09.08	2 26.02.10