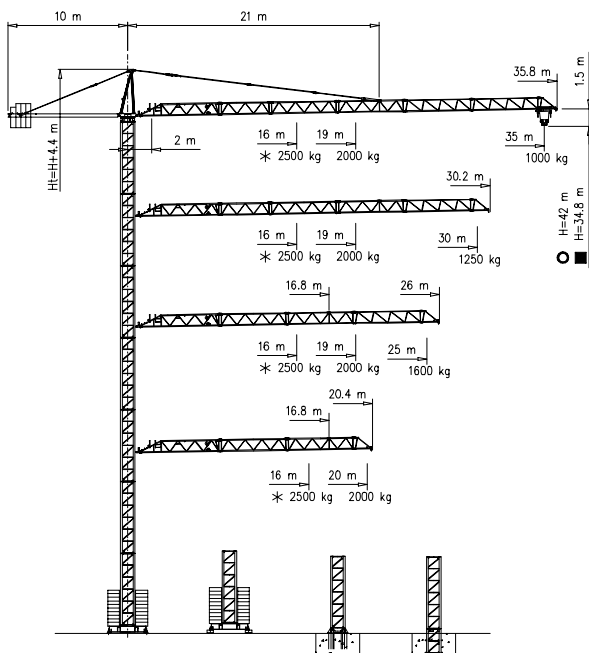




1035 CTY



- S1100 - 1.10x1.10 m
- S1210 - 1.21x1.21 m
- * V15.40 - S15.40 - V20.60



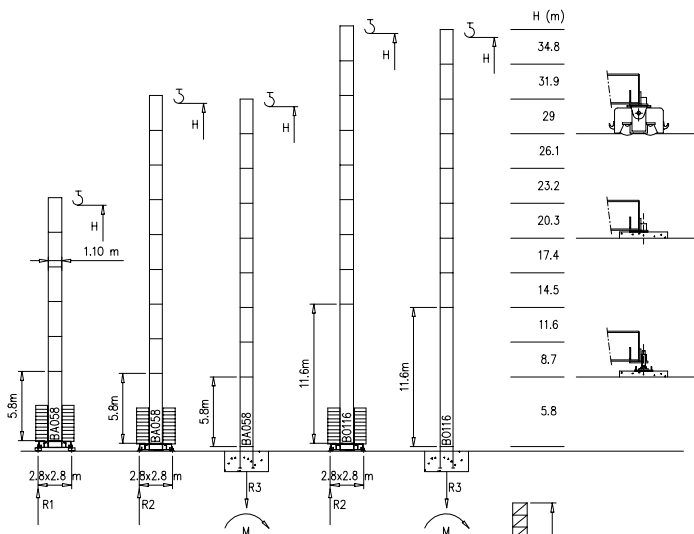


1035 CTY

Torre/Reazioni - Masts/Reactions - Mat/Réactions - Maste/Eckdrücke - Mástil/Reacciones - Tramo/Reações

S1100

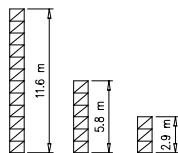
20 m → 35 m



H=29-35 m	
R1	
R2	30 t
R3	18 t
M	50 tm

H=24-29 m	
R1	
R2	27 t
R3	17 t
M	44 tm

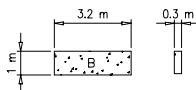
H=0-23 m	
R1	27 t
R2	24.5 t
R3	16 t
M	39 tm



Peso zavorra - Ballast weight - Poids du lest - Ballastgewicht - Peso de lastre



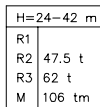
H	n°	Tot.
0-12 m	14 B	30800 kg
13-30 m	18 B	39600 kg
31-35 m	20 B	44000 kg



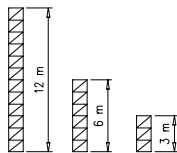


S1210

 20 m \longrightarrow 35 m



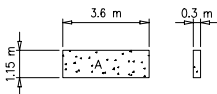
H=0-23 m	
R1	25 t
R2	25 t
R3	16 t
M	39 tm



Peso zavorra – Ballast weight – Poids du lest – Ballastgewicht – Peso de lastre



H	n*	Tot.
0-24 m	12 A	36000 kg
25-36 m	16 A	48000 kg
37-42 m	18 A	54000 kg














1035 CTY

Curve di carico – Courbes de charges – Load diagrams – LastKurven – Curvas de cargas









Pmax 2000 kg

	6000 kg		2	19	22	24	26	28	30	32	34	35	m
			2000	2000	1680	1530	1400	1290	1190	1110	1030	1000	kg
	4950 kg		2	19	22	24	26	28	30	m			
			2000	2000	1760	1600	1460	1350	1250	kg			
	4950 kg		2	20	22	24	25	m					
			2000	2000	1800	1640	1600	kg					
	3300 kg		2	20	m								
			2000	2000	kg								





Pmax 2500 kg

	6000 kg		2	16	19	22	24	26	28	30	32	34	35	m
			2500	2500	2000	1680	1530	1400	1290	1190	1110	1030	1000	kg
	4950 kg		2	16	19	22	24	26	28	30	m			
			2500	2500	2000	1760	1600	1460	1350	1250	kg			
	4950 kg		2	16	20	22	24	25	m					
			2500	2500	2000	1800	1640	1600	kg					
	3300 kg		2	16	20	m								
			2500	2500	2000	kg								





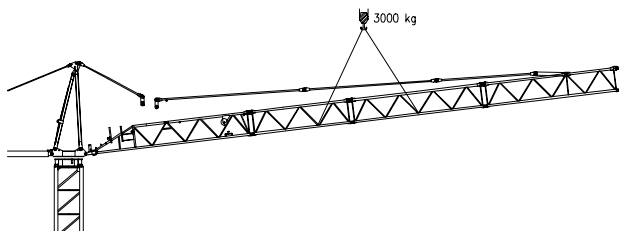
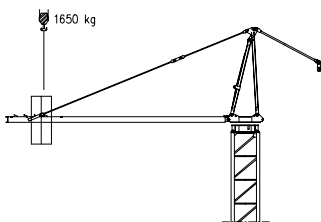
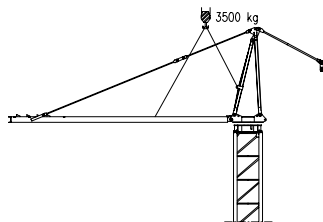
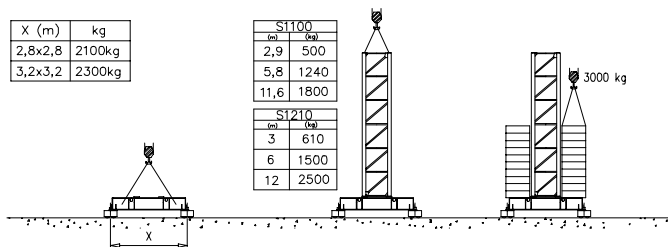
1035 CTY

Montaggio — Montage — Erection — Montage — Montaje — Montagem

X (m)	kg
2,8x2,8	2100kg
3,2x3,2	2300kg

S1100	
(m)	(kg)
2,9	500
5,8	1240
11,6	1800

S1210	
(m)	(kg)
3	610
6	1500
12	2500





1035 CTY

Meccanismi — Mechanisms — Mécanismes — Antriebe — Mecanismos

Sollevamento S9.30 e V10.30 Hoisting Levage Heben Elevación Elevação			1a	4 m/min	2000 kg	7 kW	S9.30	Potenza elettrica necessaria Puissance électrique nécessaire Necessary electric power Anschlusswert Potencia	
Sollevamento S15.40 e V15.40 Hoisting Levage Heben Elevación Elevação			2a	16 m/min	2000 kg		15 kVA		
			3a	32 m/min	1000 kg		V10.30		
		Sollevamento V20.60 Hoisting Levage Heben Elevación Elevação	1a	4 m/min	2500 kg	S15.40			
2a			20 m/min	2500 kg	11 kW	21 kVA			
3a			40 m/min	1200 kg	V15.40	19 kVA			
Carrello Trolleying Distribution Katzfahren Distribución Distribuição				1a	7 m/min	2500 kg	14.7 kW		V20.60
				2a	28 m/min	2500 kg			23 kVA
				3a	56 m/min	1200 kg			
Rotazione Slewing Orientation Schwenken Orientación Rotação			1a	OP 5 m/min	2500 kg	1.5 kW	Potenza elettrica necessaria Puissance électrique nécessaire Necessary electric power Anschlusswert Potencia		
			2a	17 m/min	2500 kg				
			3a	34 m/min	1000 kg				
Traslazione Travelling Translation Kranfahren Traslación Translação			1a	0 → 0.2	giri/min tr/min rp/min	2.2 kW @ 1200rpm			
			2a	0 → 0.5					
			3a	0 → 0.8					
			1a	0 → 20		3.7 kW			

Rete elettrica — Réseau — Mains supply — Netzstrom — Red — Rede electrica

400V — 50 Hz



FMgru s.r.l.
via Emilia 11—29010 Pontenure PC ITALY
tel. 0523/510446 ric.aut. fax 0523/510365
www.fmgru.com e-mail: info@fmgru.com

FEM 1.001
2000/14/CE



Documento commerciale non contrattuale
Per tutte le informazioni tecniche riferirsi
alle corrispondenti istruzioni

Unverbindliches Vertriebsdokument.
Für technische Informationen, siehe die
entsprechenden Anweisungen.

This commercial document is not legally
binding. For any technical information, please
refer to the corresponding instructions.

Documento comercial no contractual
Para cualquier información técnica,
ver la noticia correspondiente.

Code: 15ICA37C20A0
Ed. Data Rev. Data
1. 06.06.03 1.06.06.03