



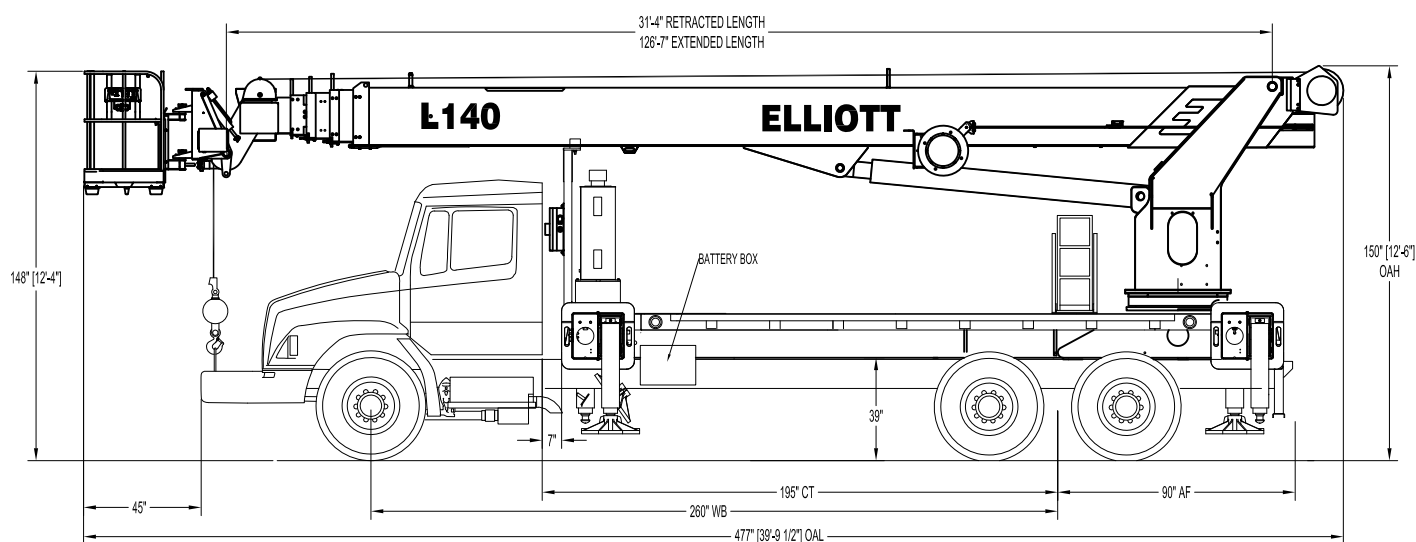
HiReach™

L140

TECHNICAL SPECIFICATIONS



L140 SIDE VIEW DIAGRAM



- **Working Height** 140'/42,6 m
- **Working Side Reach** 80'/24,4 m
- **Platform Capacity** 600 lbs/272 kg
- **Platform Size** 30x54"/76x137 cm
- **Platform Type** EZR Removable
- **Lifting Capacity (Main Winch)** 14,000 lbs/6350 kg
- **Certification (ANSI)** ANSI A92.2

- **Powered Boom Sections** 5
- **Overall Height** 12'6"/3,8 m
- **Unit Weight (Bare)** 30,000 lbs/13 608 kg
- **Outrigger Spread Main** 20'/6,1 m
- **Outrigger Spread Auxiliary** 20'/6,1 m
- **Front Gross Axle Weight Rating** 20,000 lbs/9072 kg
- **Rear Gross Axle Weight Rating** 40,000 lbs/18 144 kg

ELLIOTT
EQUIPMENT COMPANY

Elliott Equipment Company
4427 South 76th Circle
Omaha, NE 68127

Phone: 402-592-4500
Fax: 402-592-4553
Email: sales@elliottequip.com

Built for You.
www.elliottequip.com

**HIREACH - L140****TECHNICAL SPECIFICATIONS****TECHNICAL SPECIFICATIONS**

Maximum Platform Height: 135' ground to platform floor.

Working Range: 140' max. height and 80' max. side reach.

Work Platform: 30"x54" EZR work platform with 40" high rails. Equipped with two safety lanyard attachment loops and two safety harnesses and 72" lanyards. Platform capacity 600 lbs.

Platform Leveling System: Hydraulic self-contained system consisting of twin platform cylinders interacting with electro-proportional leveling control system and pump motor tank assembly mounted on boom tip. Includes heavy duty deep cycle battery supply and remote charging system for automatic leveling operation.

Platform Controls: Fully proportional wireless remote controller with boom control functions. Platform leveling and rotation controls located within the platform.

Lower Controls: Rotating turret standup operator control station on curbside of crane. Includes four single axis levers to control main boom functions.

Outrigger Controls: Outriggers shall be controlled by ground operated outrigger controls located on the street side and curb side of the unit, directly below the bed.

Outriggers: Front and rear out and down outriggers with 20' spread.

Frame: One piece, all welded, box-type fabrication with integral outrigger mounts.

Turret: Reverse offset turret is one-piece weldment mounted on subframe. Turret rotates on large diameter ball bearing.

Rotation: Continuous turret rotation with no stops. Hydraulic motor drives turret through planetary gear box with automatic brake.

Boom: 4-plate steel design. Assembly includes heavy-duty cylinder fittings, pivot pins, and replaceable wear pads.

Boom Extension: One double-acting, two stage hydraulic cylinder extends the boom sections proportionally by means of cables.

Lift: One double-acting cylinder provides smooth and stable boom elevation. Holding valve prevent boom from falling in event of hose failure.

Cylinders: All cylinders use microhoned cylinder tubing, chrome shafts, top grade packing and protective rod wipers. Cylinder-mounted holding valves provided on all load-holding cylinders.

Hoses: All high pressure hoses are wire braid reinforced with a minimum safety factor of 4 to 1.

Oil Tank Capacity: 143 gallon mounted on top of front outriggers.

Hydraulic System: Operating pressure is 3,000 PSI. System is parallel closed center type and is equipped with liquid-filled pressure gauge. Oil is supplied to upper cylinders through hydraulic union in center of turret. Cable reel to provide 12 volt charging circuit to platform hydraulic control system.

Pump: Piston type, direct mount to truck PTO.

PTO: Heavy-duty, high-speed.

Cab Equipment: PTO cable or switch with indicator lights installed in truck cab. Master power switch on dashboard. U/L approved 5:BC dry chemical fire extinguisher installed in truck cab.

Operators Manual & Video: Two CDs and one printed copy of operation, maintenance, safety and parts manual provided with each unit. Operational and safety video provided at delivery.

Installation: Unit installed on truck, painted, system and tank filled with oil,

tested, inspected, and ready to operate.

Standard Paint: Paint boom and turret red, outriggers red, and bed and boxes black. Top of steel bed painted with black nonskid surface.

Bumper: Bureau of Motor Carrier Safety rear bumper.

Weight: Approximately 30,000 lbs. with 16' steel-floor bed less truck.

Truck Chassis Required: Approx. 192" C.T. RBM 3,300,000 in-lb. per rail, 20,000 lb. front axle and 60,000 lb. GVWR required. Trucks must have increased cooling, heavy-duty front and rear springs, 12V electrical system with high capacity alternator, cab clearance stop/tail/backup lights, and I.D. lamps. Extended front frame rails. Recommended GVWR is minimum for HiReach with flatbed only. Contact factory when additional equipment is to be added.

Options:

14,000 lb Capacity Boom Winch.
Automatic Safety Rotation Lockout.
Winch Drum Tensioner.
Hydraulic Oil Cooler with Fan.
LED Lighting System.
Hydraulic Tool Circuit on Bed.
Boom Mounted Hose Reel.
Much More....

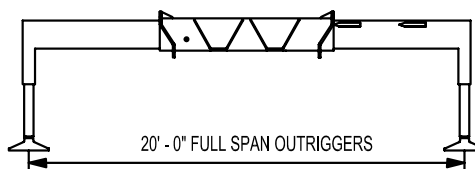
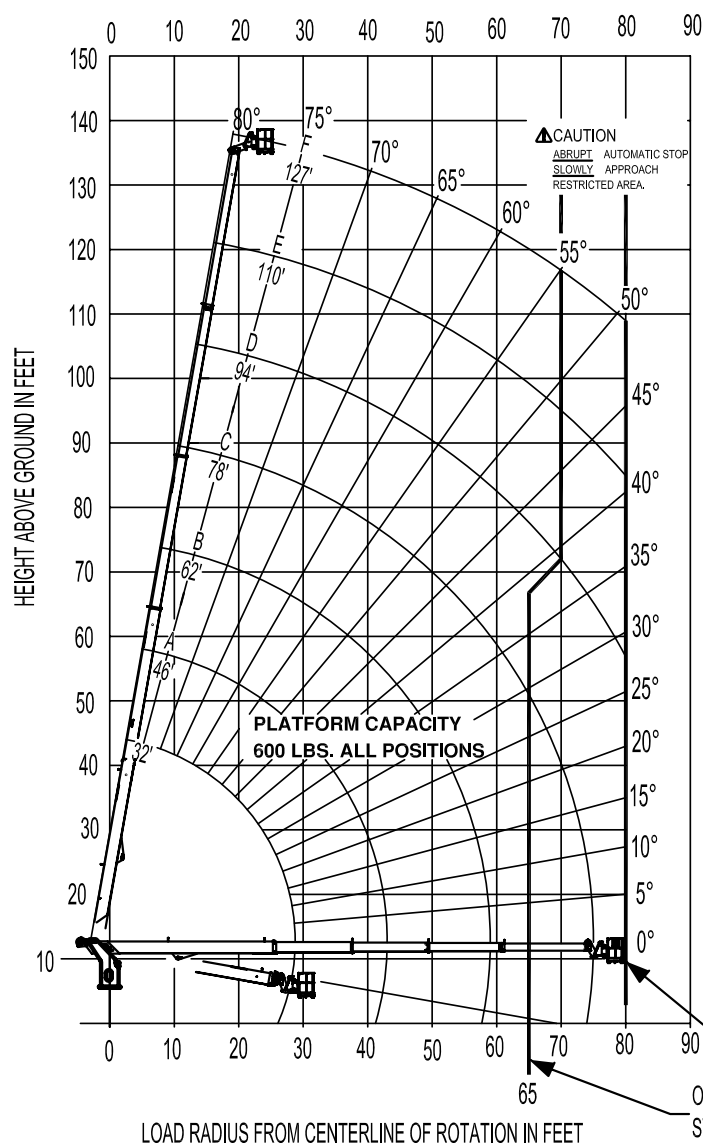
Elliott Equipment Company reserves the right to change the specification of any unit at any time without prior notice. This brochure is only a statement of general specifications on the date of this publication. For more detailed info on specific Elliott trucks go to www.elliottequip.com

**HIREACH - L140****TECHNICAL SPECIFICATIONS****MAXIMUM WORKING RANGE**

ELLIOTT
EQUIPMENT COMPANY

MODEL L140 127-ft BOOM

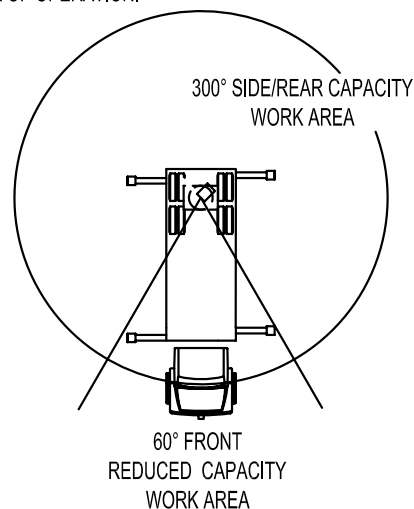
RANGE DIAGRAM WITH FULL SPAN OUTRIGGERS



NOTE:

1. Personnel handling is allowed only with full span outriggers.
2. Boom load ratings are based on loaded boom radius. Loaded boom angles are given as reference only.
3. When handling personnel, radius is measured to the front rail of the platform. Reference loaded boom angles must be increased for platform offset.

AREA OF OPERATION:



OVER SIDE/REAR
STABILITY LIMIT (LMI MODE 0025)

OVER FRONT
STABILITY LIMIT (LMI MODE 0125)

DO NOT PAINT OVER ANY LABELS 1172000 021011

ELLIOTT
EQUIPMENT COMPANY

Elliott Equipment Company
4427 South 76th Circle
Omaha, NE 68127

Phone: 402-592-4500
Fax: 402-592-4553
Email: sales@elliottequip.com

Built for You.
www.elliottequip.com

**HIREACH - L140****TECHNICAL SPECIFICATIONS****MAXIMUM LIFTING CAPABILITIES**
ELLIOTT
EQUIPMENT COMPANY
MODEL L140

127-ft BOOM

360° CHART**MAIN BOOM LOAD RATINGS WITH FULLY EXTENDED OUTRIGGERS (LMI MODE 0003)****MAIN BOOM LOAD RATINGS**

LOAD RATINGS IN lbs WITH OUTRIGGERS AND STABILIZERS EXTENDED

LOAD RADIUS (FT)	BOOM ANGLE (deg °)	32-ft	BOOM ANGLE (deg °)	A 46-ft	BOOM ANGLE (deg °)	B 62-ft	BOOM ANGLE (deg °)	C 78-ft	BOOM ANGLE (deg °)	D 94-ft	BOOM ANGLE (deg °)	E 110-ft	BOOM ANGLE (deg °)	F 127-ft
6	78	14,000												
8	74	14,000												
10	70	14,000	78	14,000										
12	66	14,000	75	14,000										
14	62	14,000	72	14,000	78	14,000								
16	57	14,000	69	14,000	76	13,500								
18	53	12,000	66	12,900	74	13,000								
20	48	10,000	63	9,600	72	11,100	76	8,500						
25	32	7,000	55	7,000	67	8,100	72	6,900	76	6,300				
30			47	6,100	62	6,000	68	5,400	73	5,200	76	4,500	80	3,000
35			37	4,700	56	4,800	64	4,500	70	4,450	74	3,800	77	2,950
40			7	3,650	50	3,800	59	3,800	66	4,100	71	3,300	75	2,900
45					42	3,000	54	3,000	62	3,300	67	3,000	72	2,600
50					34	2,400	49	2,500	58	2,700	64	2,600	69	2,300
55					7	1,900	44	2,100	54	2,350	61	2,250	66	2,050
60							38	1,800	50	2,000	58	1,900	63	1,800
65							31	1,200	46	1,550	54	1,550	60	1,500
70							23	900	41	1,200	51	1,250	58	1,200
75									36	1,000	47	1,000	54	1,000
80									31	780	43	780	51	780
	0	5,000	0	3,400	0	1,400	0	780						

ELLIOTT EQUIPMENT CO. SUPPLIED
LOADLINE EQUIPMENT DEDUCTIONS:
DOWNHAUL WEIGHT180 lbs
ONE SHEAVE BLOCK.....270 lbs

ADD 200 LBS. IF EZR PLATFORM IS
NOT ATTACHED.

NOTICE

- DO NOT DEADHEAD LINE BLOCK
AGAINST BOOM TIP WHEN
EXTENDING BOOM

- KEEP AT LEAST 5 WRAPS OF
LOADLINE ON THE WINCH DRUM
AT ALL TIMES

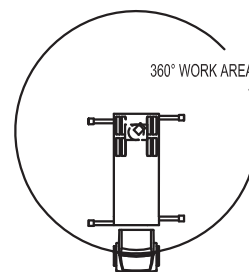
- USE ONLY 1/2" DIAMETER WIRE
ROPE, AS SPECIFIED BELOW,
WITH THE PROPER BREAKING
STRENGTHS LISTED

- ANTI-TWO-BLOCK SYSTEM
MUST BE IN GOOD OPERATING
CONDITION BEFORE OPERATING
CRANE. SEE OPERATION &
SAFETY MANUAL

1-PART LINE	2-PART LINE	
MAX PULL: 7,100 lbs	14,200 lbs	1/2" - 6 x 37 IWRC (3.5:1 S.F.) 26,600-lbs. BREAKING STRENGTH

CRANE MEETS ASME B30.1 REQUIREMENTS AT TIME OF MANUFACTURE

AREA OF OPERATION:



DO NOT PRINT OVER ANY LABELS 1105140 03082012

ELLIOTT
EQUIPMENT COMPANY

Elliott Equipment Company
4427 South 76th Circle
Omaha, NE 68127

Phone: 402-592-4500
Fax: 402-592-4553
Email: sales@elliottequip.com

Built for You.
www.elliottequip.com

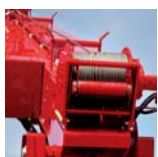
**HIREACH - L140****TECHNICAL SPECIFICATIONS****TRUCK CHASSIS SPECIFICATIONS**

	L140
Wheelbase (WB)	258" / 655 cm
Cab to Tandem (CT)	192" / 488 cm
Cab to End of Frame (EOF)	286" / 726 cm
Frame Section Modulus	27.5 in3 / 120,000 psi
Front Axle Gross Weight Rating	20,000 lb / 9072 kg
Rear Axle Gross Weight Rating	40,000 lb / 18 144 kg
Extended Front Frame	Required to Limit Front Overhang

Chassis data is minimum general requirements-not for engineering.
Actual dimensions and truck data will depend on truck selection and axle configuration.

OPTIONS**Extended Cab Configurations**

Choose an extended cab truck configuration to transport more workers, tools and supplies onto the job site.

**Boom-Mounted Winch**

Take advantage of the 14,000 lb capacity 2 speed hydraulic winch with 1/2" cable and a load indication system.

**Outrigger Pad Holders**

Outrigger pad holders safely store your pads for travel and leave plenty of room for tool boxes.

**Deep-Penetration Outriggers**

Elliott's two-stage outriggers provide extreme ground penetration for even the most difficult offroad environments for more work with less cribbing.

**Custom Paint**

Choose from a wide list of high quality paint applications including Elliott's standard white or red paint, metallic paints, or multiple colors.

**Hydraulic Oil Cooler**

Add a hydraulic oil cooler to assist with performance in hot weather and high duty-cycle applications.

**Toolbox Configurations**

Let us work with you to install steel or aluminum toolboxes above and below the bed to store tools and supplies.

**Bed Accessories**

Mount a wide variety of accessories including welders, power washers, and generators on the bed.