



# ELLIOTT

EQUIPMENT COMPANY

MODEL 4000

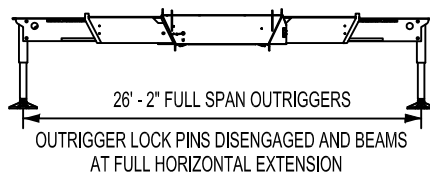
142-ft BOOM

## MAIN BOOM LOAD RATINGS WITH FULLY EXTENDED OUTRIGGERS

## MAIN BOOM LOAD RATINGS

LOAD RATINGS IN lbs WITH OUTRIGGERS AND STABILIZERS EXTENDED

LOAD RADIUS IN FEET	LOADED BOOM ANGLE	34-ft	LOADED BOOM ANGLE	A 47-ft	LOADED BOOM ANGLE	B 61-ft	LOADED BOOM ANGLE	C 74-ft	LOADED BOOM ANGLE	D 88-ft	LOADED BOOM ANGLE	E 101-ft	LOADED BOOM ANGLE	F 115-ft	LOADED BOOM ANGLE	G 128-ft	LOADED BOOM ANGLE	H 142-ft	
9	73.2	80,000																	
10	71.0	64,500	76.7	43,000															
12	67.3	56,100	74.3	43,000	79.1	43,000													
15	61.7	49,000	70.5	43,000	76.3	42,400	79.5	36,600											
20	50.9	38,000	63.6	34,000	71.4	34,000	75.7	31,700	78.7	24,900									
25	38.1	28,800	56.0	28,500	66.3	28,200	71.5	26,400	75.2	21,000	77.8	17,500							
30	19.3	24,000	47.8	23,500	60.6	23,200	67.2	23,300	71.7	18,400	75.0	16,000	77.5	13,400	79.3	11,500			
35			38.0	16,700	54.5	16,500	62.8	16,600	68.1	16,000	72.0	14,400	75.0	11,800	77.0	10,100	79.1	6,600	
40			25.2	12,500	48.0	14,000	58.0	14,100	64.4	14,000	68.8	12,600	72.2	10,700	74.9	8,900	77.0	6,600	
45					40.7	11,000	52.9	11,000	60.6	11,200	65.6	11,300	69.8	9,400	72.6	8,100	74.8	6,600	
50					31.9	8,500	47.3	8,400	56.5	8,500	62.3	10,000	67.0	8,400	70.1	7,400	72.7	5,900	
55					19.8	7,300	41.2	7,500	52.3	7,600	59.1	8,700	64.2	7,500	67.6	6,500	70.5	5,300	
60							34.9	6,600	48.0	6,800	55.5	7,000	61.2	6,700	65.0	5,900	68.3	4,800	
65							26.4	5,700	43.0	5,900	51.8	5,900	58.1	5,800	62.4	5,300	65.9	4,300	
70							12.9	5,000	37.3	5,200	47.6	5,000	55.0	5,100	59.7	4,900	63.6	3,900	
75									30.8	4,400	43.1	4,200	54.6	4,300	56.9	4,100	61.2	3,500	
80									22.5	3,700	38.2	3,600	47.8	3,600	54.0	3,500	58.7	3,100	
85									6.5	3,000	32.7	2,900	43.8	2,900	50.8	2,800	56.2	2,800	
90											26.1	2,300	39.6	2,300	47.4	2,300	53.5	2,500	
95											17.1	1,800	34.9	1,900	43.8	1,900	50.7	1,900	
100													29.6	1,500	40.0	1,500	47.6	1,500	
105													23.1	1,100	35.8	1,100	44.3	1,100	
110													13.9	800	31.6	800	41.0	800	
	0	17,000	0	10,600	0	6,600	0	4,500	0	2,500	0	1,300							
DEDUCTIONS FOR STOWED EXTENDABLE JIB (lbs)		950		700		550		450		400		350		300		250		200	DEDUCTIONS FOR STOWED EXTENDABLE JIB (lbs)



ELLIOTT EQUIPMENT CO. SUPPLIED  
LOADLINE EQUIPMENT DEDUCTIONS:  
DOWNHAUL WEIGHT .....225 lbs  
ONE SHEAVE BLOCK.....424 lbs  
TWO SHEAVE BLOCK.....592 lbs  
THREE SHEAVE BLOCK.....639 lbs  
FOUR SHEAVE BLOCK.....762 lbs  
AUXILIARY SHEAVE.....100 lbs



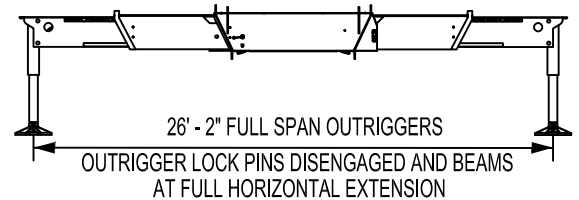
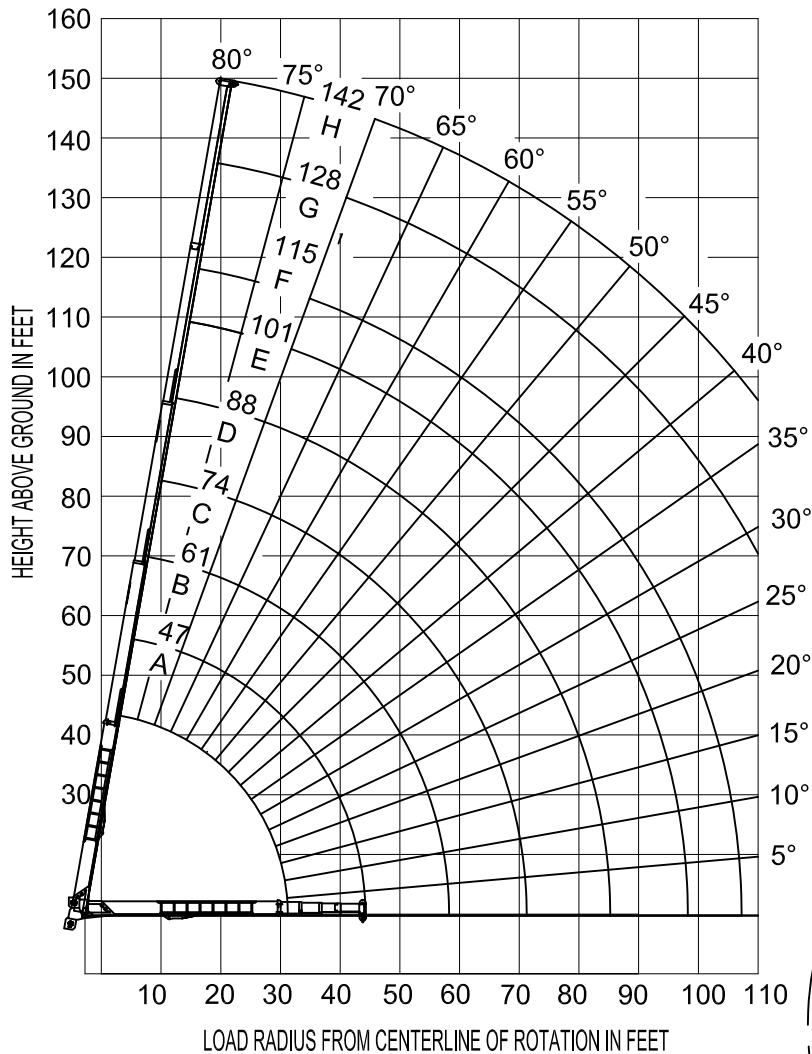
# ELLIOTT

EQUIPMENT COMPANY

MODEL 4000

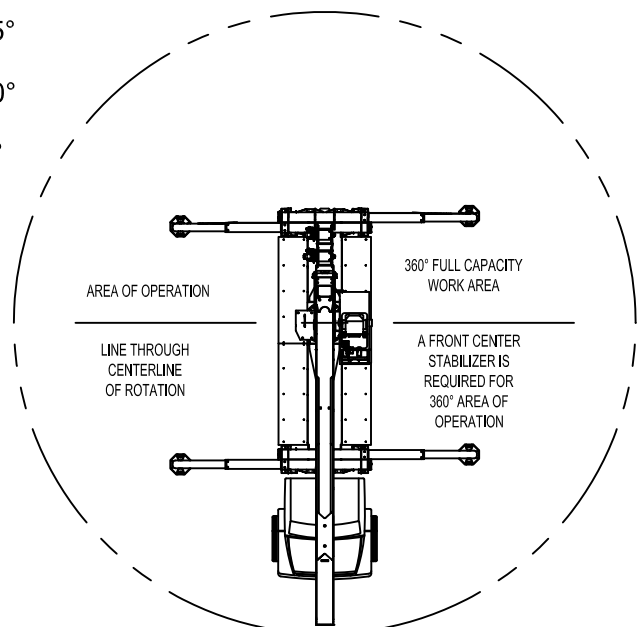
142-ft BOOM

RANGE DIAGRAM WITH FULL SPAN OUTRIGGERS



## NOTE:

1. Operate jib by radius when main boom is fully extended. Increase boom angle if necessary to maintain load radius.
2. When boom is retracted, operate jib by boom angles. Do not exceed any rated jib capacities at reduced boom lengths.
3. Capacities do not exceed 85% stability.
4. Load ratings above bold line are structurally limited.
5. Personnel handling is allowed only with full span outriggers.
6. Boom load ratings are based on loaded boom radius. Loaded boom angles are given as reference only.





# ELLIOTT

EQUIPMENT COMPANY

MODEL 4000

142-ft BOOM

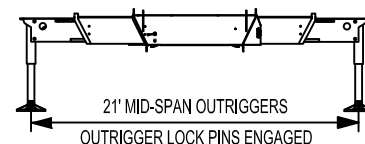
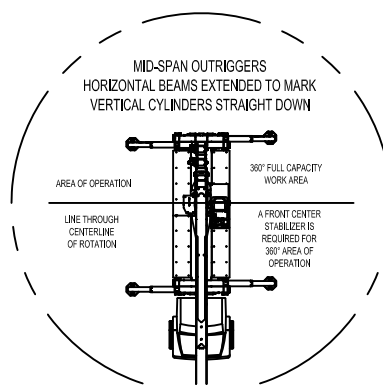
## MAIN BOOM LOAD RATINGS WITH MIDSPAN OUTRIGGERS

LOAD RATINGS IN lbs WITH OUTRIGGERS AND STABILIZERS EXTENDED

LOAD RADIUS IN FEET	LOADED BOOM ANGLE	34-ft	LOADED BOOM ANGLE	A 47-ft	LOADED BOOM ANGLE	B 61-ft	LOADED BOOM ANGLE	C 74-ft	LOADED BOOM ANGLE	D 88-ft	LOADED BOOM ANGLE	E 101-ft	LOADED BOOM ANGLE	F 115-ft	LOADED BOOM ANGLE	G 128-ft	LOADED BOOM ANGLE	H 142-ft	
9	73.2	80,000																	
10	71.0	64,500	76.7	43,000															
12	67.3	56,100	74.3	43,000	79.1	43,000													
15	61.7	49,000	70.5	43,000	76.3	42,400	79.5	36,600											
20	50.9	38,000	63.6	34,000	71.4	34,000	75.7	31,700	78.7	24,900									
25	38.1	17,000	56.0	17,500	66.3	17,900	71.5	26,400	75.2	21,000	77.8	17,500							
30	19.3	11,800	47.8	12,300	60.6	12,700	67.2	13,000	71.7	13,100	75.0	16,000	77.5	11,500	79.3	11,500			
35			38.0	8,800	54.5	9,200	62.8	9,300	68.1	9,500	72.0	9,600	75.0	10,100	77.0	10,100	79.1	6,600	
40			25.2	6,500	48.0	6,600	58.0	6,800	64.4	6,900	68.8	7,100	72.2	8,900	74.9	8,900	77.0	6,600	
45					40.7	5,000	52.9	5,400	60.6	5,500	65.6	5,700	69.8	5,900	72.6	8,100	74.8	5,900	
50					31.9	3,800	47.3	4,200	56.5	4,400	62.3	4,600	67.0	4,700	70.1	7,400	72.7	4,700	
55					19.8	2,800	41.2	3,200	52.3	3,300	59.1	3,500	64.2	3,600	67.6	6,500	70.5	3,600	
60							34.9	2,400	48.0	2,500	55.5	2,600	61.2	2,700	65.0	5,900	68.3	2,700	
65							26.4	1,700	43.0	1,800	51.8	1,900	58.1	2,000	62.4	5,300	65.9	2,000	
70							12.9	1,100	37.3	1,200	47.6	1,300	55.0	1,400	59.7	4,900	63.6	1,400	
75									30.8	800	43.1	900	54.6	1,000	56.9	4,100	61.2	1,000	
80															54.0	3,500	58.7	700	
	0	10,000	0		0	4,800	0	2,000	0	600									
DEDUCTIONS FOR STOWED EXTENDABLE JIB (lbs)		950		700		550		450		400		350		300		250		200	DEDUCTIONS FOR STOWED EXTENDABLE JIB (lbs)
DEDUCTIONS FOR STOWED FIXED LENGTH JIB (lbs)																			DEDUCTIONS FOR STOWED FIXED LENGTH JIB (lbs)

## NOTE:

- Operate jib by radius when main boom is fully extended.  
Increase boom angle if necessary to maintain load radius.
- When boom is retracted, operate jib by boom angles.  
Do not exceed any rated jib capacities at reduced boom lengths.
- Capacities do not exceed stability based on ISO 4305-1991.
- Load ratings above bold line are structurally limited.
- Personnel handling is allowed only with full span outriggers.
- Boom load ratings are based on loaded boom radius.  
Loaded boom angles are given as reference only.



ELLIOTT EQUIPMENT CO. SUPPLIED  
LOADLINE EQUIPMENT DEDUCTIONS:  
DOWNHAUL WEIGHT .....225 lbs  
ONE SHEAVE BLOCK.....424 lbs  
TWO SHEAVE BLOCK.....592 lbs  
THREE SHEAVE BLOCK.....639 lbs  
FOUR SHEAVE BLOCK.....762 lbs  
AUXILIARY SHEAVE.....100 lbs

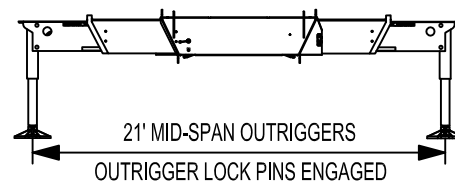
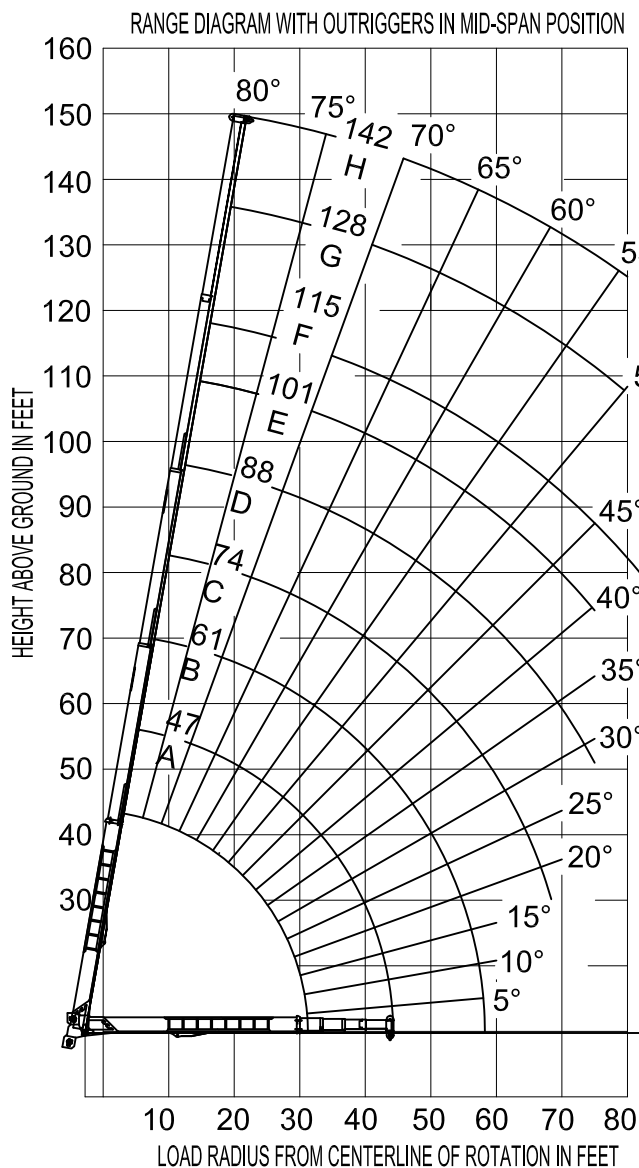


# ELLIOTT

EQUIPMENT COMPANY

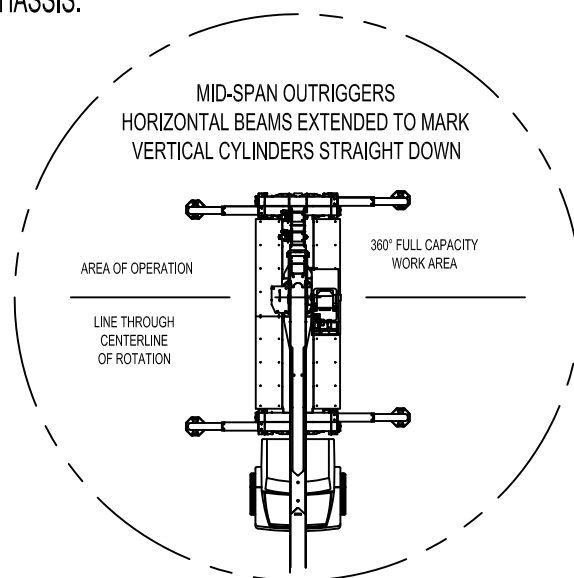
MODEL 4000

142-ft BOOM



## NOTE:

1. Operate jib by radius when main boom is fully extended. Increase boom angle if necessary to maintain load radius.
2. When boom is retracted, operate jib by boom angles. Do not exceed any rated jib capacities at reduced boom lengths.
3. Capacities do not exceed stability based on ISO 4305-1991.
4. Load ratings above bold line are structurally limited.
5. Personnel handling is allowed only with full span outriggers.
6. Boom load ratings are based on loaded boom radius. Loaded boom angles are given as reference only.





MODEL 4000

142-ft BOOM

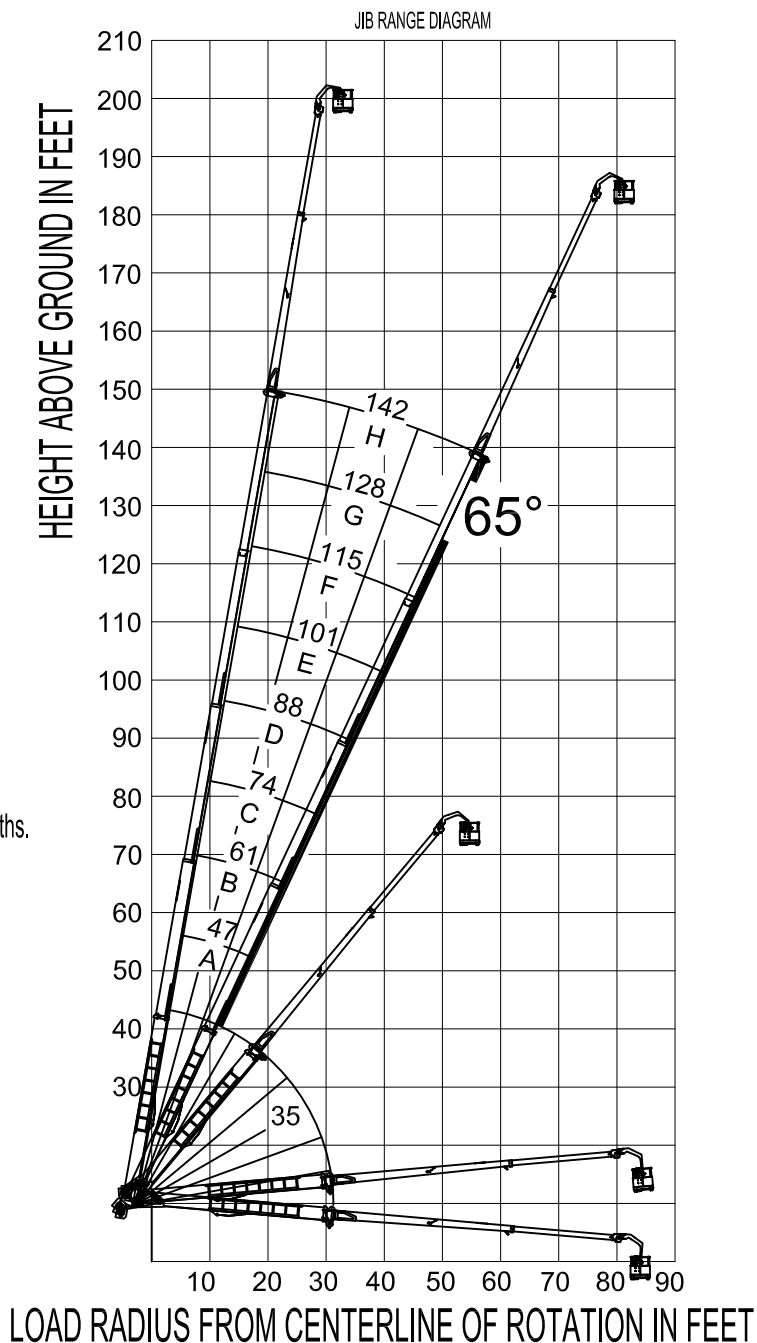
JIB RANGE DIAGRAM WITH PLATFORM ATTACHED

PERSONELL 600LBS MAX

USE OUTRIGGERS  
AT ALL TIMES

PLATFORM JIB IS NOT  
RATED TO PICK LOADS

- NOTE:
1. Operate jib by radius when main boom is fully extended.  
Increase boom angle if necessary to maintain load radius.
  2. When boom is retracted, operate jib by boom angles.  
Do not exceed any rated jib capacities at reduced boom lengths.
  3. Capacities do not exceed stability based on ISO 4305-1991.
  4. Load ratings above bold line are structurally limited.
  5. Personnel handling is allowed only with full span outriggers.
  6. Boom load ratings are based on loaded boom radius.  
Loaded boom angles are given as reference only.





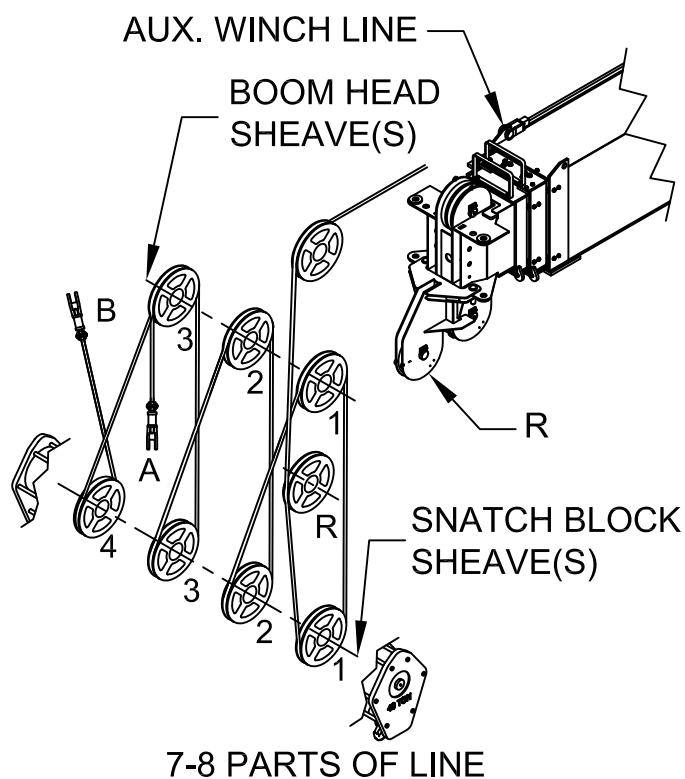
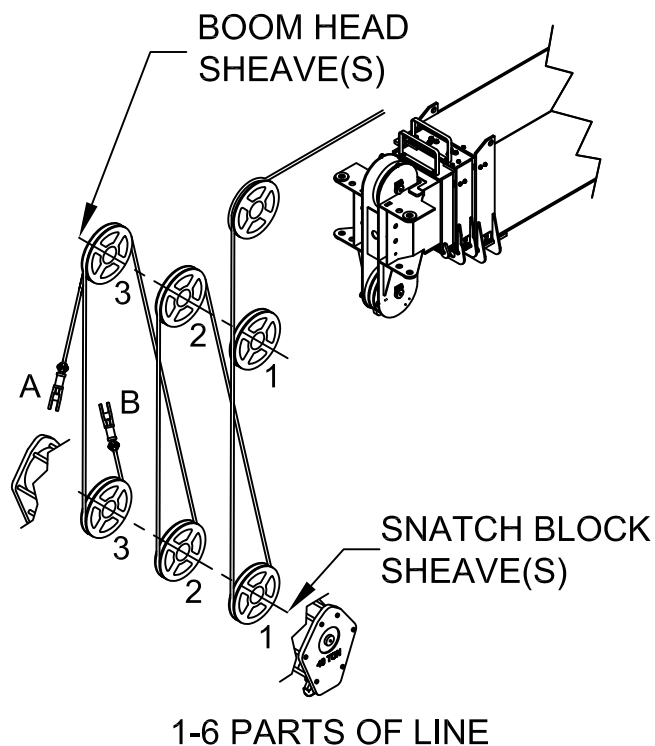
# ELLIOTT

EQUIPMENT COMPANY

MODEL 4000

142-ft BOOM

## PARTS OF LINE



### NOTICE:

- DO NOT DEADHEAD LINE BLOCK AGAINST BOOM TIP WHEN EXTENDING BOOM.
- KEEP AT LEAST 5 WRAPS OF LOADLINE ON THE WINCH DRUM AT ALL TIMES.
- USE ONLY 5/8" DIAMETER WIRE ROPE, AS SPECIFIED, WITH THE PROPER BREAKING STRENGTH LISTED.
- ANTI-TWO-BLOCK SYSTEM MUST BE IN GOOD OPERATING CONDITION BEFORE OPERATING CRANE. SEE OPERATION & SAFETY MANUAL.

PARTS OF LINE	SHEAVE(S) ON BOOM HEAD	SHEAVE(S) ON SNATCH BLOCK	5/8" - SPIN RESISTANT (5:1 S.F.) 50,000-lbs. BREAKING STRENGTH
1	1	A	10,000 lbs
2	1 B	1	20,000 lbs
3	12	1 A	30,000 lbs
4	12 B	12	40,000 lbs
5	123	12 A	50,000 lbs
6	123 B	123	60,000 lbs
7	R 123	123 A	70,000 lbs
8	R 123 B	1234	80,000 lbs

A-DEAD END FOR ODD PARTS OF LINE  
 B-DEAD END FOR EVEN PARTS OF LINE  
 R-ROOSTER SHEAVE REQUIRED WHEN USING 7 AND 8 PARTS OF LINE