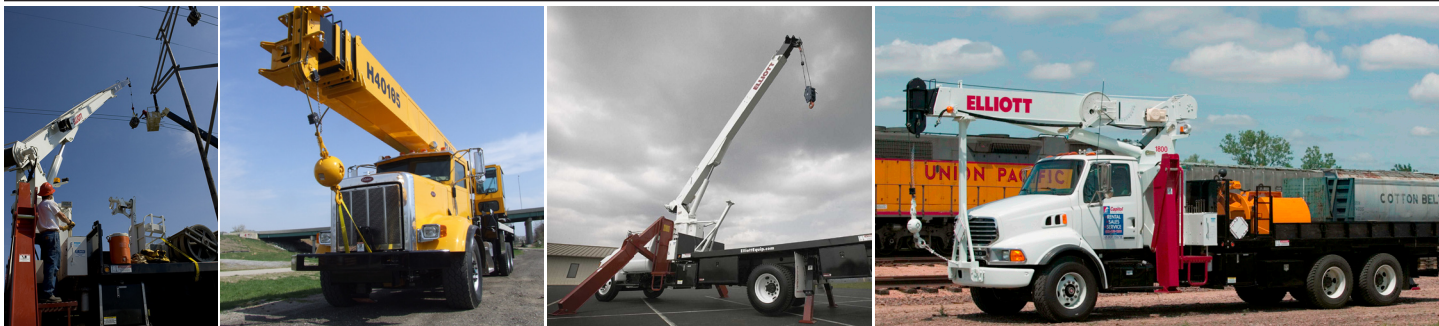




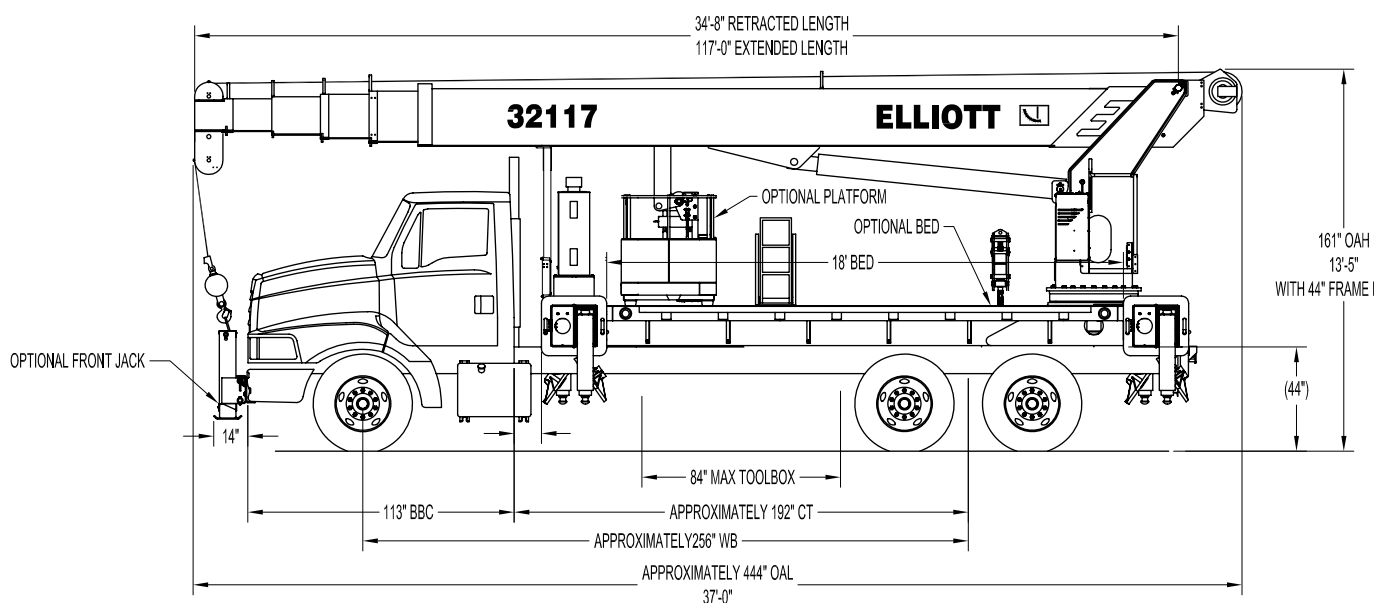
BoomTruck™

32117R

TECHNICAL SPECIFICATIONS



32117R SIDE VIEW DIAGRAM



- **Maximum Vertical Reach** 153'/46,6 m
- **Working Area** 180 Degrees Standard (360 Optional)
- **Lifting Capacity** 64,000 lbs/29 030 kg
- **Boom Length** 117'/35,6 m
- **Crane Weight (Standard)** 30,800 lbs/13 971 kg
- **Jib Lengths** 24'/ 7,3 m
- **Winch Bare Drum Pull** 12,800 lbs/5806 kg

- **Powered Boom Sections** 5
- **Overall Height** 13'5"/4,1 m
- **Operator Controls** Single-Side Rotating Standup
- **Outrigger Type Front** Out-Down
- **Outrigger Spread Front** 20'/6 m
- **Outrigger Type Rear** Out-Down
- **Outrigger Spread Rear** 20'/6 m



Elliott Equipment Company
4427 South 76th Circle
Omaha, NE 68127

Phone: 402-592-4500
Fax: 402-592-4553
Email: sales@elliottequip.com

Built for You.
www.elliottequip.com

**BOOMTRUCK - 32117R****TECHNICAL SPECIFICATIONS****TECHNICAL SPECIFICATIONS**

Crane Capacity: 64,000 lbs at 5' load radius.

Maximum Tip Height: 129' height (153' with optional 24' jib)

Control Console: Rotating turret single operator standup control station equipped with four single axis control levers for the main crane controls. Operator station includes LMI display, bubble level gauge, engine start/stop switch, signal horn button, variable speed throttle switch, lifting capacity chart, range diagram chart, boom angle indicator, system pressure gauge, 12V DC power source, and cup holder. Independent ground level electric operated outrigger controls.

Boom: Five-section fully proportional, high strength steel plated rectangular tube sections. A maximum boom tip height of 129' mounted on a truck. The boom nose contains one floating upper sheave and three lower sheaves. Assembly includes heavy-duty cylinder fittings, pivot pins, and replaceable wear pads.

Winch: Mounted at the base of the boom for a long fleet angle and flat level spooling of cable. Winch is driven by a planetary reducer and powered by a hydraulic motor. Burst-of-speed winch provides increased line speed. The winch brake is spring applied, pressure release design. Supplied with 425' of 9/16" diameter rotation resistant wire rope with a single line pull of 9,060 pounds, and a downhaul ball with swivel hook for single part line.

Load Moment Indicator System:

System senses hoist cylinder pressures, boom length and boom angle with hydraulic function lockout. The display console is equipped with a bar graph showing crane utilization, boom angle or boom length, a mode select controls for main boom and jib operation, and an anti-two block with an audio/visual warning and shut-off functions to limit hook-boom point contact.

Elliott Equipment Company reserves the right to change the specification of any unit at any time without prior notice. This brochure is only a statement of general specifications on the date of this publication. For more detailed info on specific Elliott trucks go to www.elliottequip.com

Outriggers: Two sets of out and down overframe outriggers with 20' span. Outriggers are configured for full span or mid span operation. Outriggers equipped with ball socket aluminum removable pads that stow on vertical outrigger legs.

Frame: Full length, all welded rigid 4-plate design sub-frame. Sub-frame allows for bolt-on addition of 18' bed wings, with top plate of subbase serving as a portion of the bed deck, to form a three-piece bed.

Turret: Reverse offset turret is one-piece weldment. Turret rotates on large diameter ball bearing.

Rotation: Hydraulic motor drives turret through double reduction planetary swing drive for 372-degree non-continuous rotation.

Lift: One double-acting long stroke cylinder provides smooth and stable boom elevation. Holding valve prevents boom from falling in event of hose failure.

Boom Extension: Incorporates a 2-stage hydraulic extension cylinder, attached to the largest boom section, with a proportional cable extension system driving the outermost sections.

Hoses: All high pressure hoses are wire braid reinforced with a minimum safety factor of 4 to 1.

Cylinders: All cylinders use microhoned cylinder tubing, chrome shafts, top grade packing and protective rod wipers. Cylinder-mounted holding valves provided on all load-holding cylinders.

Hydraulic System: Equipped with air-shift PTO, piston pump, SAE O-ring face seals on pressure lines, and a 10-micron return line filter. The control valve distributes all flow to hoist system, swing circuit, and other crane functions. System is closed center type.

Oil Tank Capacity: 120 gallon mounted to truck frame on roadside.

Cab Equipment: PTO switch with indicator lights installed in truck cab. U/L approved 5:BC dry chemical fire extinguisher installed in truck cab.

Operators Manual & Video: Two CD copies and one hard copy of operation, maintenance, safety and parts manual provided with each unit. Operational and safety video provided at delivery.

Installation: Unit installed on chassis, painted, system and tank filled with oil, tested, inspected, and ready to operate.

Standard Paint: Paint turret and boom white, outriggers red, and bed and boxes black. Top of bed painted with black nonskid surface.

Bumper: Bureau of Motor Carrier Safety rear bumper.

Weight: Approximately 30,800 lbs. with 18' steel-floor bed less truck.

Truck Chassis Required: Approx. 204" C.A. RBM 3,300,000 in-lb. per rail, 20,000 lb. front axle and 60,000 lb. GVWR required. Trucks must have front frame extension, 12V electrical system with high capacity alternator, cab clearance stop/tail/backup lights, and I.D. lamps. Recommended GVWR is minimum for BoomTruck with flatbed only. Contact factory when additional equipment is to be added.

Options:

24' Fixed Jib.

Radio Remote Controls.

Gravity-Leveled and Rotating Steel Basket.

Tool Box Configurations.

Front Jack for 360 Degree Crane Operation.

Enclosed Control Cab with Heating and Air Conditioning.

Winch Drum Rotation Indicator.

Work Area Definition System (WADS).

Much More...



BOOMTRUCK - 32117R

TECHNICAL SPECIFICATIONS

LOAD CHART - MAIN BOOM, FULL-SPAN OUTRIGGERS



DO NOT PAINT OVER ANY LABELS

1097740

101705

MODEL 3200 117-ft BOOM

MAIN BOOM LOAD RATINGS WITH FULLY EXTENDED OUTRIGGERS

MAIN BOOM LOAD RATINGS

JIB LOAD RATINGS

LOAD RATINGS IN lbs WITH OUTRIGGERS AND STABILIZERS EXTENDED

LOAD RATINGS IN lbs WITH OUTRIGGERS

AND STABILIZERS EXTENDED

LOAD RADIUS IN FEET	LOADED BOOM ANGLE	28-ft BOOM ANGLE	A 42-ft BOOM ANGLE	B 57-ft BOOM ANGLE	C 72-ft BOOM ANGLE	D 87-ft BOOM ANGLE	E 102-ft BOOM ANGLE	F 117-ft BOOM ANGLE
5	80	64,000						
6	78	54,000						
8	73.5	42,000						
10	69	35,000	76.5	28,000				
12	64	30,000	73.5	27,500	78.5	25,000		
14	59	26,500	70.5	25,000	76.5	23,600	80	20,000
16	53.5	23,600	67.5	22,800	74.5	22,200	78.5	19,000
18	47.5	20,000	64.5	20,400	72.5	20,600	77	18,200
20	41	16,500	61	18,000	70	19,100	75	17,000
25			52	14,000	64.5	14,300	71	14,000
30			42	10,000	58	10,950	66	11,000
35				52	8,650	62	8,800	68
40				45	7,000	57	7,100	64
45				36.5	5,600	52	5,800	60
50					46	4,750	56	4,850
55					40	3,900	55.5	4,000
60					32	2,800	47	3,200
65					22.5	2,400	42	2,600
70							36	2,000
75							29.5	1,400
80								38.5
85								33.5
90								
	0	8,500	0	4,700	0	2,600		

24-ft FIXED LENGTH JIB

LOAD RADIUS IN FEET

LOADED BOOM ANGLE

24-ft JIB

30 79 4,000

35 77 3,900

40 75 3,750

45 73 3,450

50 71 3,050

55 68.5 2,650

60 66.5 2,350

65 64 2,050

70 62 1,850

75 59.5 1,650

80 57 1,450

85 54.5 1,150

90 51.5 800

95 48.5 500

NOTICE

- DO NOT DEADEND LINE BLOCK AGAINST BOOM TIP WHEN EXTENDING BOOM.
- KEEP AT LEAST 5 WRAPS OF LOADLINE ON THE WINCH DRUM AT ALL TIMES.
- USE ONLY 9/16" DIAMETER WIRE ROPE, AS SPECIFIED BELOW, WITH THE PROPER BREAKING STRENGTHS LISTED.
- ANTI-TWO-BLOCK SYSTEM MUST BE IN GOOD OPERATING CONDITION BEFORE OPERATING CRANE. SEE OPERATION & SAFETY MANUAL.

DEDUCTIONS FOR
STOWED JIB (lbs)

550

350

300

250

200

150

100

DEDUCTIONS FOR STOWED
FIXED LENGTH JIB (lbs)

1-PART LINE

2-PART LINE

3-PART LINE

4-PART LINE

5-PART LINE

6-PART LINE

7-PART LINE



MAX PULL: 9,060 lbs

18,120 lbs

27,180 lbs

36,240 lbs

45,300 lbs

54,360 lbs

64,000 lbs

CRANE MEETS ASME B30.5 REQUIREMENTS AT TIME OF MANUFACTURE

ELLIOTT EQUIPMENT CO. SUPPLIED

LOADLINE EQUIPMENT DEDUCTIONS:

DOWNHAUL WEIGHT180 lbs

ONE SHEAVE BLOCK.....375 lbs

TWO SHEAVE BLOCK.....640 lbs

THREE SHEAVE BLOCK.....870 lbs

AUXILIARY SHEAVE.....100 lbs

9/16" - SPIN RESISTANT (5:1 S.F.)
45,300-lbs, BREAKING STRENGTH

Elliott Equipment Company
4427 South 76th Circle
Omaha, NE 68127

Phone: 402-592-4500
Fax: 402-592-4553
Email: sales@elliottequip.com

Built for You.
www.elliottequip.com

**BOOMTRUCK - 32117R****TECHNICAL SPECIFICATIONS****LOAD CHART - MAIN BOOM, MID-SPAN OUTRIGGERS****MODEL 3200 117-ft BOOM****MAIN BOOM LOAD RATINGS WITH OUTRIGGERS AT MID-SPAN POSITION****MAIN BOOM LOAD RATINGS**

LOAD RATINGS IN lbs WITH OUTRIGGERS AND STABILIZERS EXTENDED

LOAD RADIUS IN FEET	LOADED BOOM ANGLE	28-ft	LOADED BOOM ANGLE	A 42-ft	LOADED BOOM ANGLE	B 57-ft	LOADED BOOM ANGLE	C 72-ft	LOADED BOOM ANGLE	D 87-ft	LOADED BOOM ANGLE	E 102-ft	LOADED BOOM ANGLE	F 117-ft
5	80	64,000												
6	78	54,000												
8	73.5	42,000												
10	69	35,000	76.5	28,000										
12	64	30,000	73.5	27,500	78.5	25,000								
14	59	26,500	70.5	25,000	76.5	23,600	80	20,000						
16	53.5	21,700	67.5	22,500	74.5	22,200	78.5	19,000						
18	47.5	16,800	64.5	17,500	72.5	18,000	77	18,200	80	16,100				
20	41	13,500	61	14,000	70	14,500	75	14,800	78	14,500				
25			52	8,800	64.5	9,200	71	9,400	75	9,500	78	9,500	79	7,200
30			42	5,800	58	6,150	66	6,300	71.5	6,400	75	6,450	77	6,500
35					52	4,200	62	4,350	68	4,450	72	4,500	75	4,550
40					45	2,850	57	3,000	64	3,100	69	3,150	72.5	3,150
45					36.5	1,800	52	2,000	60	2,100	65.5	2,100	69.5	2,150
50							46	1,200	56	1,300	62.5	1,350	67	1,350
0		5,000	0	2,000										
DEDUCTIONS FOR STOWED JIB (lbs)		550		350		300		250		200		150		100

JIB LOAD RATINGSLOAD RATINGS IN lbs WITH OUTRIGGERS
AND STABILIZERS EXTENDED**24-ft FIXED LENGTH JIB**

LOAD RADIUS IN FEET	LOADED BOOM ANGLE	24-ft JIB
30	79	4,000
35	77	3,900
40	75	2,850
45	73	1,850
50	71	1,100
55	68.5	500

NOTICE

- DO NOT DEADHEAD LINE BLOCK AGAINST BOOM TIP WHEN EXTENDING BOOM.
- KEEP AT LEAST 5 WRAPS OF LOADLINE ON THE WINCH DRUM AT ALL TIMES.
- USE ONLY 9/16" DIAMETER WIRE ROPE, AS SPECIFIED BELOW, WITH THE PROPER BREAKING STRENGTHS LISTED.
- ANTI-TWO-BLOCK SYSTEM MUST BE IN GOOD OPERATING CONDITION BEFORE OPERATING CRANE. SEE OPERATION & SAFETY MANUAL.

DEDUCTIONS FOR STOWED
FIXED LENGTH JIB (lbs)**1-PART LINE**

MAX PULL: 9,060 lbs

2-PART LINE

18,120 lbs

3-PART LINE

27,180 lbs

4-PART LINE

36,240 lbs

5-PART LINE

45,300 lbs

6-PART LINE

54,360 lbs

7-PART LINE

64,000 lbs

ELLIOTT EQUIPMENT CO. SUPPLIED
LOADLINE EQUIPMENT DEDUCTIONS:
DOWNHAUL WEIGHT180 lbs
ONE SHEAVE BLOCK.....375 lbs
TWO SHEAVE BLOCK.....640 lbs
THREE SHEAVE BLOCK.....870 lbs
AUXILIARY SHEAVE.....100 lbs

9/16" - SPIN RESISTANT (5:1 S.F.)
45,300-lbs. BREAKING STRENGTH

CRANE MEETS ASME B30.5 REQUIREMENTS AT TIME OF MANUFACTURE

DO NOT PAINT OVER ANY LABELS

1097740

101705

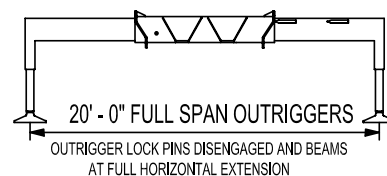
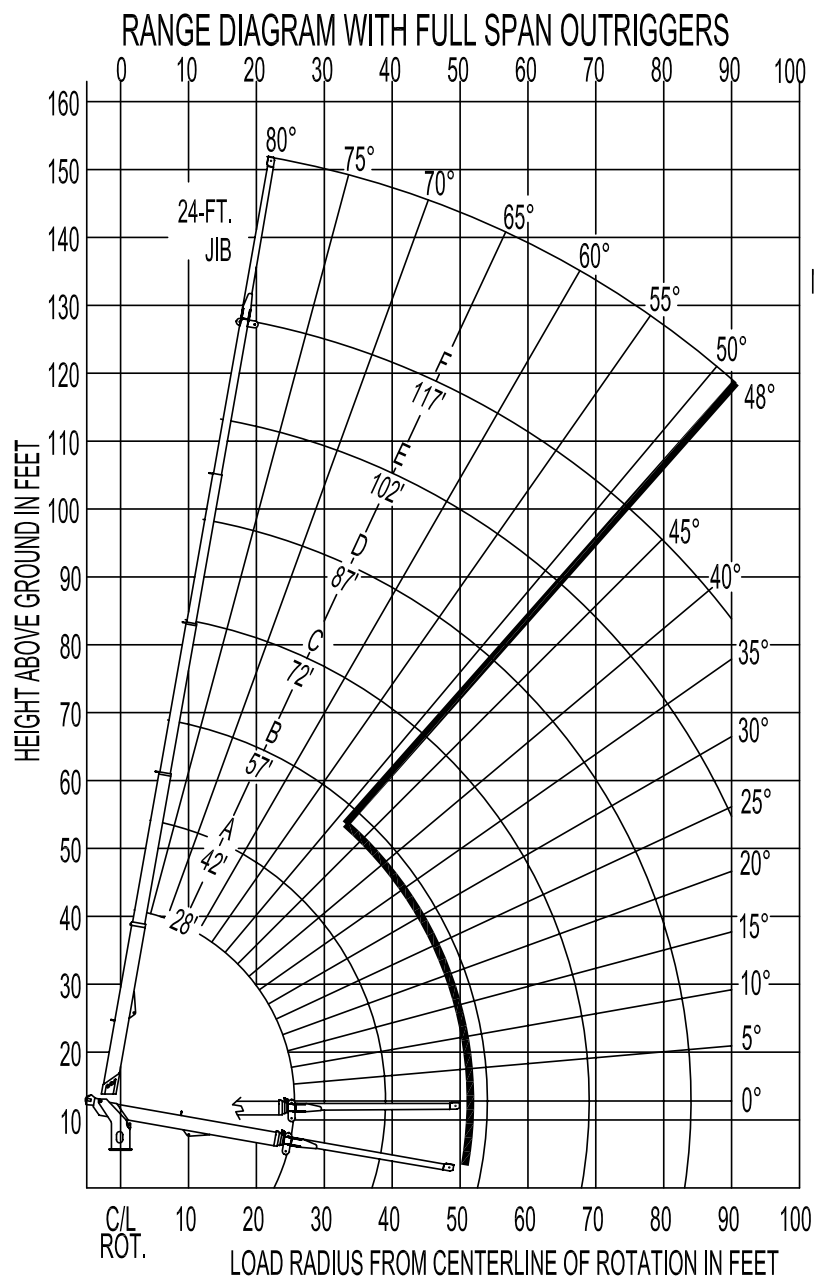


Elliott Equipment Company
4427 South 76th Circle
Omaha, NE 68127

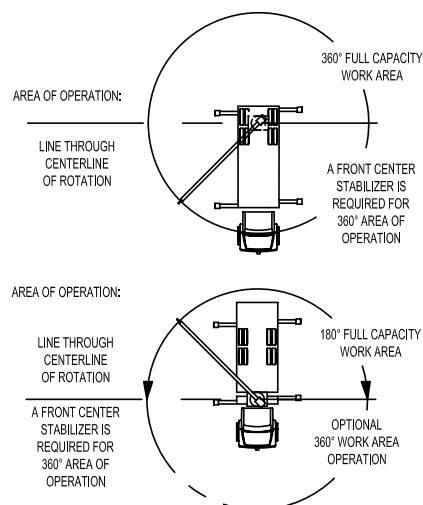
Phone: 402-592-4500
Fax: 402-592-4553
Email: sales@elliottequip.com

Built for You.
www.elliottequip.com

**BOOMTRUCK - 32117R****TECHNICAL SPECIFICATIONS****RANGE CHART - MAIN BOOM + JIB, FULL-SPAN OUTRIGGERS**
ELLIOTT
EQUIPMENT COMPANY

MODEL 3200 117-ft BOOM
**NOTE:**

1. Operate jib by radius when main boom is fully extended. Increase boom angle if necessary to maintain load radius.
2. When boom is retracted, operate jib by boom angle. Do not exceed any rated jib capacities at reduced boom lengths.
3. Capacities do not exceed 85% stability.
4. Load ratings above bold line are structurally limited.
5. Personnel handling is allowed only with full span outriggers.
6. Boom load ratings are based on loaded boom radius. Loaded boom angles are given as reference only.



DO NOT PAINT OVER ANY LABELS

1097740

101705

ELLIOTT
EQUIPMENT COMPANY

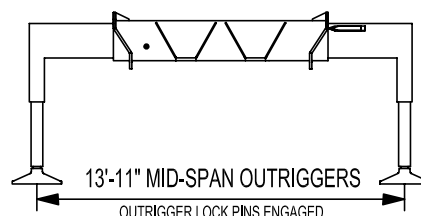
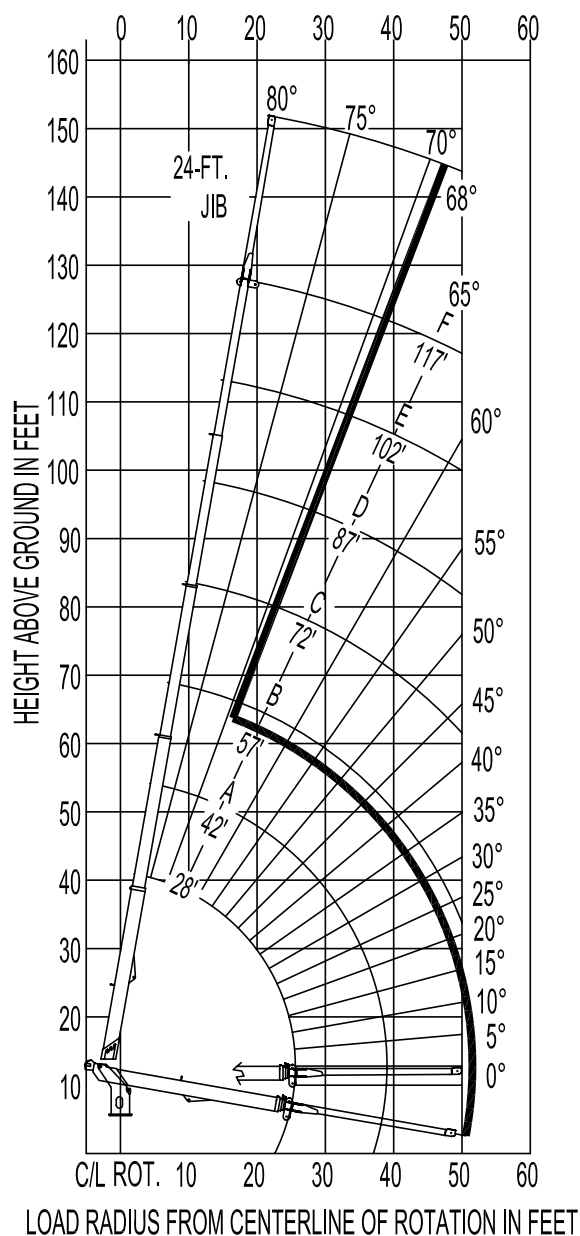
 Elliott Equipment Company
4427 South 76th Circle
Omaha, NE 68127

 Phone: 402-592-4500
Fax: 402-592-4553
Email: sales@elliottequip.com
Built for You.
www.elliottequip.com

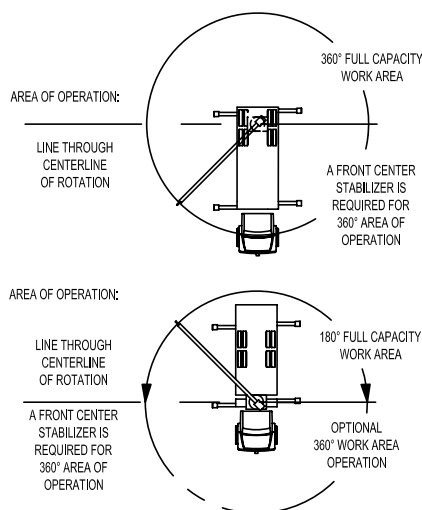
**BOOMTRUCK - 32117R****TECHNICAL SPECIFICATIONS****LOAD CHART - MAIN BOOM + JIB, MID-SPAN OUTRIGGERS**

ELLIOTT
EQUIPMENT COMPANY

MODEL 3200 117-ft BOOM

RANGE DIAGRAM WITH MID-SPAN OUTRIGGERS**NOTE:**

1. Operate jib by radius when main boom is full extended. Increase boom angle if necessary to maintain load radius.
2. When boom is retracted, operate jib by boom angles. Do not exceed any rated jib capacities at reduced boom lengths.
3. Capacities do not exceed 85% stability.
4. Load ratings above bold line are structurally limited.
5. Personnel handling is allowed only with full span outriggers.
6. Boom load ratings are based on loaded boom radius. Loaded boom angles are given as reference only.



DO NOT PAINT OVER ANY LABELS

1097740

101705

ELLIOTT
EQUIPMENT COMPANY

Elliott Equipment Company
4427 South 76th Circle
Omaha, NE 68127

Phone: 402-592-4500
Fax: 402-592-4553
Email: sales@elliottequip.com

Built for You.
www.elliottequip.com

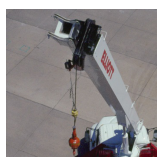
**BOOMTRUCK - 32117R****TECHNICAL SPECIFICATIONS****TRUCK CHASSIS SPECIFICATIONS**

	32117R BoomTruck
Wheelbase (WB)	268" / 681 cm
Cab to Tandem (CT)	204" / 518 cm
Cab to End of Frame (EOF)	334" / 594 cm
Frame Section Modulus	30.0 in3-110,000 psi / 492 cm3-758,428 kPa
Front Axle Gross Weight Rating	20,000 lb / 9071 kg
Rear Axle Gross Weight Rating	40,000 lb / 18 143 kg
Integral Front Frame Rails	Required for Front Stabilizer

Chassis data is minimum general requirements-not for engineering.
Actual dimensions and truck data will depend on truck selection and axle configuration.
*Minimum chassis weight is required to meet 85% stability requirements.

OPTIONS**Radio Remote Control**

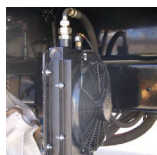
Interference protected radio remotes let you get closer to your work and have full control over your machine. Includes battery charging feature and optional LMI screen.

**Pin-On Jib Attachment**

One piece fixed jib that stow on the side of the boom for easy placement while on the worksite.

**360 Degree Area of Operation**

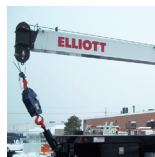
Add the convenience of 360 degree area of operation by adding a front stabilizer for working around the entire crane.

**Hydraulic Oil Cooler**

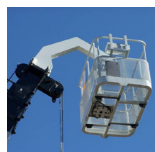
Add a bed-mounted hydraulic oil cooler and fan to assist with high duty cycle job applications. A "must" for hot weather environments

**Enclosed Operator Cab**

Optional tool boxes and bed storage can accommodate any storage need for tools, work materials and more.

**Hook Block for Multi-Part Line**

Elliott can install a 4 part hook block or a 7-8 part-hook block to improve lifting capabilities. The block can be stored at the rear of the bed.

**Gravity Leveled Basket**

Elliott's pin-on work platform pins onto the boom for easy installation and removal. Gravity leveling and mechanical rotation makes it a great accessory for any worksite.

**Body Mounted Hose Reels and Circuits**

Let us work with you to customize your tool compatability by adding hose reels or hydraulic circuits to the crane bed.