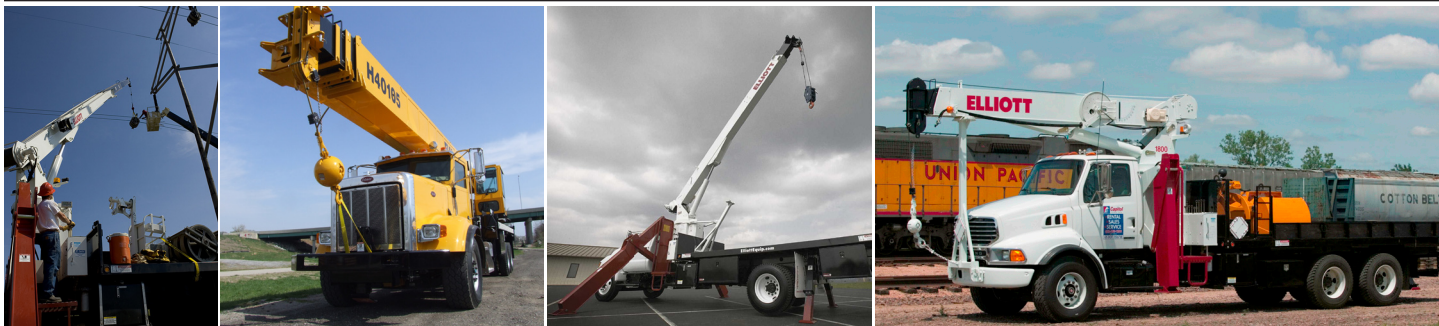




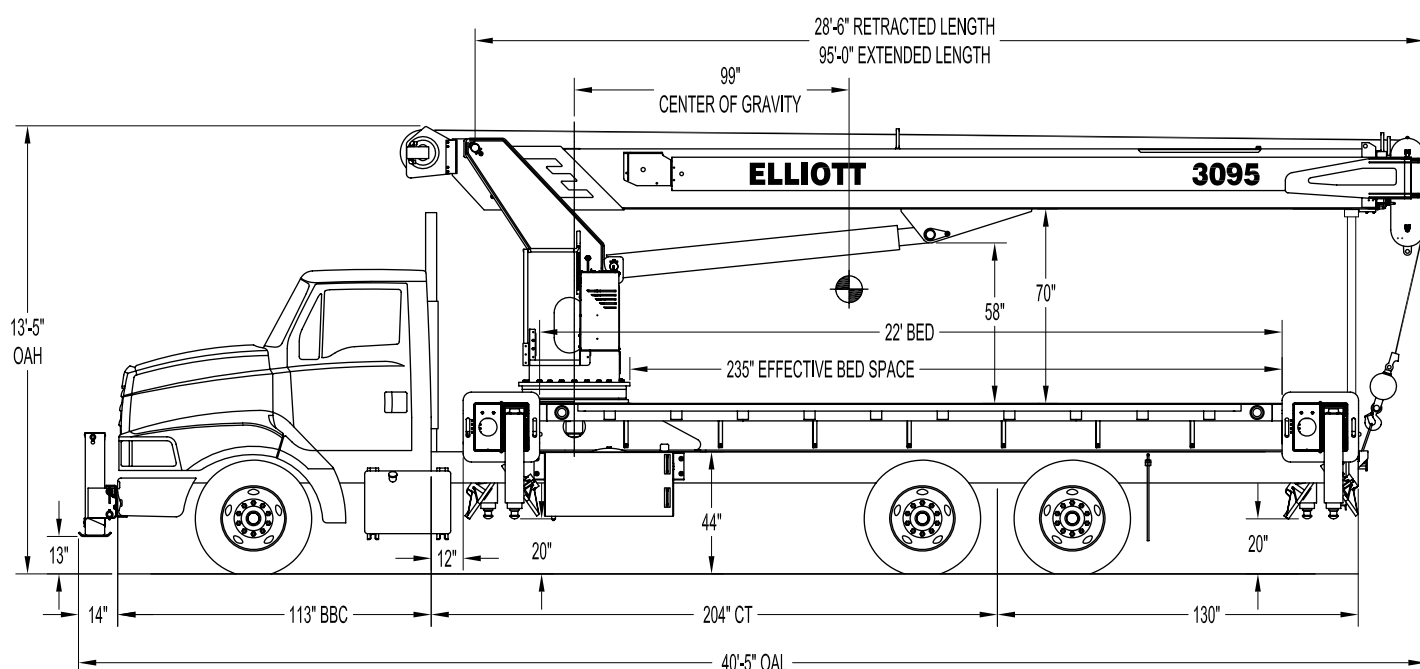
BoomTruck™

3095F

TECHNICAL SPECIFICATIONS



3095F SIDE VIEW DIAGRAM



- **Maximum Vertical Reach** 148'/45,1 m
- **Working Area** 180 Degrees Standard (360 Optional)
- **Lifting Capacity** 60,000 lbs/27 216 kg
- **Boom Length** 95'/29 m
- **Crane Weight (Standard)** 27,750 lbs/12 587 kg
- **Jib Lengths** 24'-41' / 7,3-12,5 m
- **Winch Bare Drum Pull** 12,800 lbs/5806 kg

- **Powered Boom Sections** 4
- **Overall Height** 13'5"/4,1 m
- **Operator Controls** Rotating Standup
- **Outrigger Type Front** Out-Down
- **Outrigger Spread Front** 20'/6 m
- **Outrigger Type Rear** Out-Down
- **Outrigger Spread Rear** 20'/6 m

ELLIOTT
EQUIPMENT COMPANY

Elliott Equipment Company
4427 South 76th Circle
Omaha, NE 68127

Phone: 402-592-4500
Fax: 402-592-4553
Email: sales@elliottequip.com

Built for You.
www.elliottequip.com

**BOOMTRUCK - 3095F****TECHNICAL SPECIFICATIONS****TECHNICAL SPECIFICATIONS**

Crane Capacity: 60,000 lbs at 5' load radius.

Maximum Tip Height: 107' height (148' with optional 41' jib)

Control Console: Rotating turret single operator standup control station equipped with four single axis control levers for the main crane controls. Operator station includes LMI display, bubble level gauge, engine start/stop switch, signal horn button, variable speed throttle switch, lifting capacity chart, range diagram chart, boom angle indicator, system pressure gauge, 12V DC power source, and cup holder. Independent ground level electric operated outrigger controls.

Boom: Four-section fully proportional, high strength steel plated rectangular tube sections. A maximum boom tip height of 107' mounted on a truck. The boom nose contains one floating upper sheave and three lower sheaves. Assembly includes heavy-duty cylinder fittings, pivot pins, and replaceable wear pads.

Winch: Mounted at the base of the boom for a long fleet angle and flat level spooling of cable. Winch is driven by a planetary reducer and powered by a hydraulic motor. Burst-of-speed winch provides increased line speed. The winch brake is spring applied, pressure release design. Supplied with 425' of 9/16" diameter rotation resistant wire rope with a single line pull of 9,060 pounds, and a downhaul ball with swivel hook for single part line.

Load Moment Indicator System: System senses hoist cylinder pressures, boom length and boom angle with hydraulic function lockout. The display console is equipped with a bar graph showing crane utilization, boom angle or boom length, a mode select controls for main boom and jib operation, and an anti-two block with an audio/visual warning and shut-off functions to limit hook-boom point contact.

Elliott Equipment Company reserves the right to change the specification of any unit at any time without prior notice. This brochure is only a statement of general specifications on the date of this publication. For more detailed info on specific Elliott trucks go to www.elliottequip.com

Outriggers: Two sets of out and down overframe outriggers with 20' span. Outriggers are configured for full span, mid span, or retracted operation. Outriggers equipped with ball socket aluminum removable pads that stow on vertical outrigger legs.

Frame: Full length, all welded rigid 4-plate design sub-frame. Sub-frame allows for bolt-on addition of 22' bed wings, with top plate of subbase serving as a portion of the bed deck, to form a three-piece bed.

Turret: Reverse offset turret is one-piece weldment. Turret rotates on large diameter ball bearing.

Rotation: Hydraulic motor drives turret through double reduction planetary swing drive for 372-degree non-continuous rotation. The swing drive system has a spring applied, pressure release brake.

Lift: One double-acting long stroke cylinder provides smooth and stable boom elevation. Holding valve prevents boom from falling in event of hose failure.

Boom Extension: Incorporates a 2-stage hydraulic extension cylinder, attached to the largest boom section, with a proportional cable extension system driving the outermost sections.

Hoses: All high pressure hoses are wire braid reinforced with a minimum safety factor of 4 to 1.

Cylinders: All cylinders use microhoned cylinder tubing, chrome shafts, top grade packing and protective rod wipers. Cylinder-mounted holding valves provided on all load-holding cylinders.

Hydraulic System: Equipped with cable-shift PTO, piston pump, SAE O-ring face seals on pressure lines, and a 10-micron return line filter. The control valve distributes all flow to hoist system, swing circuit, and other crane functions. System is closed center type.

Oil Tank Capacity: 120 gallon mounted to truck frame on roadside.

Cab Equipment: PTO cable with indicator lights installed in truck cab. U/L approved 5:BC dry chemical fire extinguisher installed in truck cab.

Operators Manual & Video: Two CD copies and one hard copy of operation, maintenance, safety and parts manual provided with each unit. Operational and safety video provided at delivery.

Installation: Unit installed on chassis, painted, system and tank filled with oil, tested, inspected, and ready to operate.

Standard Paint: Paint turret and boom white, outriggers red, and bed and boxes black. Top of bed painted with black nonskid surface.

Bumper: Bureau of Motor Carrier Safety rear bumper.

Weight: Approximately 27,750 lbs. with 22' steel-floor bed less truck.

Truck Chassis Required: Approx. 204" C.T. RBM 3,300,000 in-lb. per rail, 20,000 lb. front axle and 40,000 lb. GVWR required. Trucks must have front frame extension, 12V electrical system with high capacity alternator, cab clearance stop/tail/backup lights, and I.D. lamps. Recommended GVWR is minimum for BoomTruck with flatbed only. Contact factory when additional equipment is to be added.

Options:

24' to 41' 2 Piece Telescopic Jib

Radio Remote Controls

Gravity-Leveled Steel Basket

Tool Box Configurations

Front Jack for 360 Degree Crane Operation

Much more...

**BOOMTRUCK - 3095F****TECHNICAL SPECIFICATIONS****LOAD CHART - MAIN BOOM, FULL-SPAN OUTRIGGERS****MODEL 3000 95-ft BOOM****MAIN BOOM LOAD RATINGS WITH FULLY EXTENDED OUTRIGGERS****MAIN BOOM LOAD RATINGS**

LOAD RATINGS IN lbs WITH OUTRIGGERS AND STABILIZERS EXTENDED

| LOAD RADIUS IN FEET | LOADED BOOM ANGLE | 28-ft | LOADED BOOM ANGLE | A 43-ft | LOADED BOOM ANGLE | B 56-ft | LOADED BOOM ANGLE | C 69-ft | LOADED BOOM ANGLE | D 82-ft | LOADED BOOM ANGLE | E 95-ft |
|--------------------------------|-------------------|--------|-------------------|---------|-------------------|---------|-------------------|---------|-------------------|---------|-------------------|---------|
| 5 | 79.5 | 60,000 | | | | | | | | | | |
| 8 | 72.5 | 44,000 | 79.5 | 32,700 | | | | | | | | |
| 10 | 68 | 37,000 | 76.5 | 31,500 | | | | | | | | |
| 12 | 63 | 32,000 | 74 | 27,400 | 78.5 | 26,800 | | | | | | |
| 14 | 58 | 28,100 | 71 | 25,400 | 76.5 | 24,900 | 79.5 | 22,200 | | | | |
| 16 | 53 | 24,200 | 68 | 23,500 | 74 | 23,200 | 78 | 21,400 | 77.5 | 15,800 | | |
| 20 | 40.5 | 20,100 | 62 | 19,300 | 70 | 19,500 | 74.5 | 18,200 | 74 | 13,700 | 79 | 10,700 |
| 25 | 10.5 | 14,900 | 53.5 | 15,600 | 64 | 15,000 | 70 | 14,600 | 70.5 | 11,800 | 76.5 | 10,500 |
| 30 | | | 43.5 | 12,300 | 57.5 | 12,100 | 65 | 11,900 | 66.5 | 9,700 | 73.5 | 9,400 |
| 35 | | | 32.5 | 9,200 | 51 | 10,000 | 60 | 9,900 | 62.5 | 8,300 | 70.5 | 8,400 |
| 40 | | | 7 | 6,200 | 44 | 8,350 | 55.5 | 8,300 | 58 | 5,700 | 67 | 7,350 |
| 45 | | | | | 35 | 6,050 | 49.5 | 6,000 | 53.5 | 4,700 | 64 | 6,950 |
| 50 | | | | | 22.5 | 4,900 | 43.5 | 4,950 | 48.5 | 4,050 | 59.5 | 4,650 |
| 55 | | | | | | | 36.5 | 4,100 | 42.2 | 3,400 | 56 | 4,050 |
| 60 | | | | | | | 27.5 | 3,350 | 37 | 2,850 | 52 | 3,450 |
| 65 | | | | | | | 13 | 2,650 | 30.5 | 2,350 | 47.5 | 2,850 |
| 70 | | | | | | | | | 21 | 1,950 | 43 | 2,350 |
| 75 | | | | | | | | | | | 38 | 1,950 |
| 80 | | | | | | | | | | | 32 | 1,550 |
| 85 | | | | | | | | | | | 25 | 1,250 |
| 90 | | | | | | | | | | | 14.5 | 950 |
| | 0 | 10,000 | 0 | 7,600 | 0 | 4,350 | 0 | 2,600 | 0 | 1,550 | 0 | 800 |
| DEDUCTIONS FOR STOWED JIB (lb) | 900 | | 600 | | 450 | | 350 | | 300 | | 250 | |
| | 600 | | 400 | | 300 | | 250 | | 200 | | 200 | |

JIB LOAD RATINGS

LOAD RATINGS IN lbs WITH OUTRIGGERS AND STABILIZERS EXTENDED

| LOAD RADIUS IN FEET | LOADED BOOM ANGLE | 24-ft FIXED LENGTH JIB | | 24-41 ft EXTENDABLE JIB | | |
|---------------------|-------------------|------------------------|-------------------|-------------------------|-------------------|--------------------|
| | | 24-ft JIB | LOADED BOOM ANGLE | 24-ft JIB RETRACTED | LOADED BOOM ANGLE | 41-ft JIB EXTENDED |
| 30 | 74.5 | 5,450 | 74.5 | 5,200 | 76.5 | 3,200 |
| 35 | 72 | 5,050 | 72 | 4,800 | 74.5 | 3,050 |
| 40 | 69.5 | 4,600 | 69.5 | 4,350 | 72 | 2,850 |
| 45 | 67 | 4,150 | 67 | 3,900 | 70 | 2,650 |
| 50 | 64.5 | 3,750 | 64.5 | 3,500 | 67.5 | 2,450 |
| 55 | 61.5 | 3,300 | 61.5 | 3,050 | 65.5 | 2,300 |
| 60 | 58.5 | 2,800 | 58.5 | 2,550 | 63 | 2,150 |
| 65 | 56 | 2,300 | 56 | 2,050 | 60.5 | 2,000 |
| 70 | 53 | 1,850 | 53 | 1,600 | 58 | 1,850 |
| 75 | 50 | 1,450 | 50 | 1,200 | 55.5 | 1,600 |
| 80 | 46.5 | 1,100 | 46.5 | 850 | 53 | 1,350 |
| 85 | 43 | 800 | 43 | 550 | 50.5 | 1,100 |
| 90 | | | | | 47.5 | 850 |
| 95 | | | | | 44.5 | 600 |

ELLIOTT EQUIPMENT CO. SUPPLIED
LOADLINE EQUIPMENT DEDUCTIONS:
 DOWNHAUL WEIGHT180 lbs
 ONE SHEAVE BLOCK.....375 lbs
 TWO SHEAVE BLOCK.....640 lbs
 THREE SHEAVE BLOCK.....870 lbs
 AUXILIARY SHEAVE.....100 lbs

DEDUCTIONS FOR STOWED EXTENDABLE JIB (lbs)

DEDUCTIONS FOR STOWED FIXED LENGTH JIB (lbs)

| 1-PART LINE | 2-PART LINE | 3-PART LINE | 4-PART LINE | 5-PART LINE | 6-PART LINE | 7-PART LINE | NOTICE |
|---------------------|-------------|-------------|-------------|-------------|-------------|-------------|---|
| | | | | | | | -DO NOT SEARHEAD LINE BLOCK AGAINST BOOM TIP WHEN EXTENDING BOOM -KEEP AT LEAST 10 FEET OF CABLE IN THE WINCH DRUM AT ALL TIMES -USE ONLY 1/2" DIAMETER WIRE ROPE AS SPECIFIED BELOW WITH THE PROPER BREAKING STRENGTHS LISTED -ANTI-WOOLLOCK SYSTEM MUST BE IN GOOD OPERATING CONDITION BEFORE OPERATING CRANE. SEE OPERATOR'S SAFETY MANUAL. |
| MAX PULL: 9,600 lbs | 19,200 lbs | 28,800 lbs | 38,400 lbs | 48,000 lbs | 56,000 lbs | 60,000 lbs | |
| MAX PULL: 9,060 lbs | 18,120 lbs | 27,180 lbs | 36,240 lbs | 45,300 lbs | 54,360 lbs | 60,000 lbs | |

CRANE MEETS ASME B30.1 REQUIREMENTS AT TIME OF MANUFACTURE

DO NOT PRINT OVER RPT LABELS 111362 111333



Elliott Equipment Company
4427 South 76th Circle
Omaha, NE 68127

Phone: 402-592-4500
Fax: 402-592-4553
Email: sales@elliottequip.com

Built for You.
www.elliottequip.com

**BOOMTRUCK - 3095F****TECHNICAL SPECIFICATIONS****LOAD CHART - MAIN BOOM, MID-SPAN OUTRIGGERS****MODEL 3000****95-ft BOOM****MAIN BOOM LOAD RATINGS WITH OUTRIGGERS AT MID-SPAN POSITION****MAIN BOOM LOAD RATINGS**

LOAD RATINGS IN lbs WITH OUTRIGGERS AND STABILIZERS EXTENDED

| LOAD RADIUS IN FEET | LOADED BOOM ANGLE | 28-ft | LOADED BOOM ANGLE | A 43-ft | LOADED BOOM ANGLE | B 56-ft | LOADED BOOM ANGLE | C 69-ft | LOADED BOOM ANGLE | D 82-ft | LOADED BOOM ANGLE | E 95-ft |
|-----------------------------------|-------------------------|--------|-------------------------|------------|-------------------------|------------|-------------------------|------------|-------------------------|------------|-------------------------|------------|
| 5 | 79.5 | 60,000 | | | | | | | | | | |
| 8 | 72.6 | 44,000 | 79.5 | 32,700 | | | | | | | | |
| 10 | 68 | 37,000 | 76.6 | 31,500 | | | | | | | | |
| 12 | 63.2 | 32,000 | 74 | 27,400 | 78.4 | 26,800 | | | | | | |
| 14 | 58.1 | 28,100 | 71 | 25,400 | 76.3 | 24,900 | 79.6 | 22,200 | | | | |
| 16 | 52.7 | 21,400 | 68 | 21,400 | 74 | 21,400 | 78 | 21,400 | | | | |
| 20 | 40.2 | 13,700 | 61.5 | 13,700 | 69.2 | 13,700 | 74 | 13,700 | 77.3 | 13,700 | 79.1 | 10,700 |
| 25 | 16.3 | 9,000 | 53.5 | 9,000 | 63.7 | 9,000 | 69.5 | 8,950 | 73.5 | 8,950 | 76.4 | 10,000 |
| 30 | | | 43.9 | 6,300 | 57.4 | 6,300 | 65 | 6,300 | 69.5 | 6,300 | 73.1 | 7,250 |
| 35 | | | 31.8 | 4,550 | 50.7 | 4,550 | 60 | 4,550 | 65.4 | 4,550 | 69.7 | 5,500 |
| 40 | | | 7.1 | 3,000 | 43.1 | 3,350 | 54.5 | 3,550 | 61.2 | 3,350 | 65.8 | 3,200 |
| 45 | | | | | 34.1 | 2,500 | 49 | 2,500 | 57 | 2,500 | 62.2 | 2,400 |
| 50 | | | | | 22 | 1,850 | 43 | 1,850 | 52.4 | 1,800 | 58.6 | 2,000 |
| 55 | | | | | | | 35.5 | 1,300 | 47.5 | 1,300 | 54.9 | 1,600 |
| 60 | | | | | | | 27 | 900 | 42.3 | 850 | 50.9 | 1,250 |
| 65 | | | | | | | 12.3 | 500 | 36.5 | 500 | 46.7 | 950 |
| 70 | | | | | | | | | | | 42.1 | 750 |
| DEDUCTIONS FOR STOWED JIB (lb) | | 900 | | 600 | | 450 | | 350 | | 300 | | 250 |
| | | 600 | | 400 | | 300 | | 250 | | 200 | | 200 |

JIB LOAD RATINGS

LOAD RATINGS IN lbs WITH OUTRIGGERS AND STABILIZERS EXTENDED

| LOAD RADIUS IN FEET | LOADED BOOM ANGLE | 24-ft FIXED LENGTH JIB | | 24-41 ft EXTENDABLE JIB | | |
|---------------------------|-------------------------|------------------------|-------------------------|-------------------------|-------------------------|-----------------------|
| | | 24-ft JIB | LOADED BOOM ANGLE | 24-ft JIB RETRACTED | LOADED BOOM ANGLE | 41-ft JIB EXTENDED |
| 30 | 74.5 | 5,450 | 74.5 | 5,200 | 76.5 | 3,200 |
| 35 | 72 | 4,000 | 72 | 3,600 | 74.5 | 3,050 |
| 40 | 69.5 | 2,800 | 69.5 | 2,400 | 72 | 2,850 |
| 45 | 67 | 1,950 | 67 | 1,600 | 70 | 2,650 |
| 50 | 64.5 | 1,300 | 64.5 | 900 | 67.5 | 2,150 |
| 55 | 61.5 | 750 | | | 65.5 | 1,300 |

ELLIOTT EQUIPMENT CO. SUPPLIED
LOADLINE EQUIPMENT DEDUCTIONS:
DOWNHAUL WEIGHT180 lbs
ONE SHEAVE BLOCK.....375 lbs
TWO SHEAVE BLOCK.....640 lbs
THREE SHEAVE BLOCK.....870 lbs
AUXILIARY SHEAVE.....100 lbs

DEDUCTIONS FOR STOWED EXTENDABLE JIB (lbs)

DEDUCTIONS FOR STOWED FIXED LENGTH JIB (lbs)

1-PART LINE

MAX PULL: 9,600 lbs

2-PART LINE

19,200 lbs

3-PART LINE

28,800 lbs

4-PART LINE

38,400 lbs

5-PART LINE

48,000 lbs

6-PART LINE

56,000 lbs

7-PART LINE

60,000 lbs

NOTICE

- DO NOT DEADHEAD LINE BLOCK AGAINST BOOM TIP WHEN EXTENDING BOOM.
- KEEP AT LEAST 5 WRAPS OF LOADLINE ON THE WINCH DRUM AT ALL TIMES.
- USE ONLY 9/16" DIAMETER WIRE ROPE, AS SPECIFIED BELOW, WITH THE PROPER BREAKING STRENGTHS LISTED.
- ANTI-TWO-BLOCK SYSTEM MUST BE IN GOOD OPERATING CONDITION BEFORE OPERATING CRANE. SEE OPERATION & SAFETY MANUAL.

9/16" - 6 x 37 IWRC (3.5:1 S.F.)
33,600-lbs, BREAKING STRENGTH
9/16" - SPIN RESISTANT (5:1 S.F.)
45,300-lbs, BREAKING STRENGTH

CRANE MEETS ASME B30.5 REQUIREMENTS AT TIME OF MANUFACTURE

DO NOT PAINT OVER ANY LABELS

1113160 111308



Elliott Equipment Company
4427 South 76th Circle
Omaha, NE 68127

Phone: 402-592-4500
Fax: 402-592-4553
Email: sales@elliottequip.com

Built for You.
www.elliottequip.com

**BOOMTRUCK - 3095F****TECHNICAL SPECIFICATIONS****LOAD CHART - MAIN BOOM, RETRACTED OUTRIGGERS****MODEL 3000****95-ft BOOM****MAIN BOOM LOAD RATINGS WITH OUTRIGGERS AT FULL HORIZONTAL RETRACTED POSITION****MAIN BOOM LOAD RATINGS**

LOAD RATINGS IN lbs WITH OUTRIGGERS AND STABILIZERS EXTENDED

| LOAD RADIUS IN FEET | LOADED BOOM ANGLE | 28-ft | LOADED BOOM ANGLE | A 43-ft | LOADED BOOM ANGLE | B 56-ft | LOADED BOOM ANGLE | C 69-ft | LOADED BOOM ANGLE | D 82-ft | LOADED BOOM ANGLE | E 95-ft |
|-----------------------------------|-------------------------|--------|-------------------------|------------|-------------------------|------------|-------------------------|------------|-------------------------|------------|-------------------------|------------|
| 5 | 79.5 | 60,000 | | | | | | | | | | |
| 8 | 72.5 | 22,000 | 78.9 | 22,000 | | | | | | | | |
| 10 | 67.5 | 14,900 | 76.1 | 14,900 | | | | | | | | |
| 12 | 62.8 | 10,800 | 73.5 | 10,800 | 77.5 | 10,800 | | | | | | |
| 14 | 58.9 | 8,200 | 70.7 | 8,200 | 75.6 | 8,200 | 78.7 | 8,200 | | | | |
| 16 | 53.7 | 6,500 | 67.7 | 6,500 | 73.5 | 6,500 | 76.9 | 6,500 | 79.5 | 6,500 | | |
| 20 | 41.6 | 4,400 | 61.5 | 4,400 | 68.9 | 4,400 | 73.5 | 4,400 | 76.3 | 4,400 | 78.3 | 4,400 |
| 25 | 16.5 | 2,550 | 53.1 | 2,550 | 63.1 | 2,550 | 68.7 | 2,550 | 72.5 | 2,550 | 74.9 | 2,550 |
| 30 | | | 43.6 | 1,450 | 56.8 | 1,450 | 63.9 | 1,450 | 68.5 | 1,450 | 71.6 | 1,450 |
| 35 | | | 31.6 | 700 | 50.1 | 700 | 59.1 | 700 | 64.6 | 700 | 68.5 | 700 |
| DEDUCTIONS FOR STOWED JIB (lb) | | 900 | | 600 | | 450 | | 350 | | 300 | | 250 |
| | | 600 | | 400 | | 300 | | 250 | | 200 | | 200 |

ELLIOTT EQUIPMENT CO. SUPPLIED
LOADLINE EQUIPMENT DEDUCTIONS:
DOWNHAUL WEIGHT180 lbs
ONE SHEAVE BLOCK.....375 lbs
TWO SHEAVE BLOCK.....640 lbs
THREE SHEAVE BLOCK.....870 lbs
AUXILIARY SHEAVE.....100 lbs

DEDUCTIONS FOR STOWED EXTENDABLE JIB (lbs)

DEDUCTIONS FOR STOWED FIXED LENGTH JIB (lbs)

1-PART LINE**2-PART LINE****3-PART LINE****4-PART LINE****5-PART LINE****6-PART LINE****7-PART LINE****NOTICE**

- DO NOT DEADHEAD LINE BLOCK AGAINST BOOM TIP WHEN EXTENDING BOOM.
- KEEP AT LEAST 5 WRAPS OF LOADLINE ON THE WINCH DRUM AT ALL TIMES.
- USE ONLY 9/16" DIAMETER WIRE ROPE, AS SPECIFIED BELOW, WITH THE PROPER BREAKING STRENGTHS LISTED.
- ANTI-TWO-BLOCK SYSTEM MUST BE IN GOOD OPERATING CONDITION BEFORE OPERATING CRANE. SEE OPERATION & SAFETY MANUAL.

MAX PULL: 9,600 lbs

19,200 lbs

28,800 lbs

38,400 lbs

48,000 lbs

56,000 lbs

60,000 lbs

9/16" - 6 x 37 IWRC (3.5:1 S.F.)
33,600-lbs, BREAKING STRENGTH

MAX PULL: 9,060 lbs

18,120 lbs

27,180 lbs

36,240 lbs

45,300 lbs

54,360 lbs

60,000 lbs

9/16" - SPIN RESISTANT (5:1 S.F.)
45,300-lbs, BREAKING STRENGTH

CRANE MEETS ASME B30.5 REQUIREMENTS AT TIME OF MANUFACTURE

DO NOT PAINT OVER ANY LABELS

1113160 111308

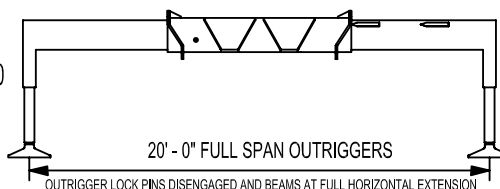
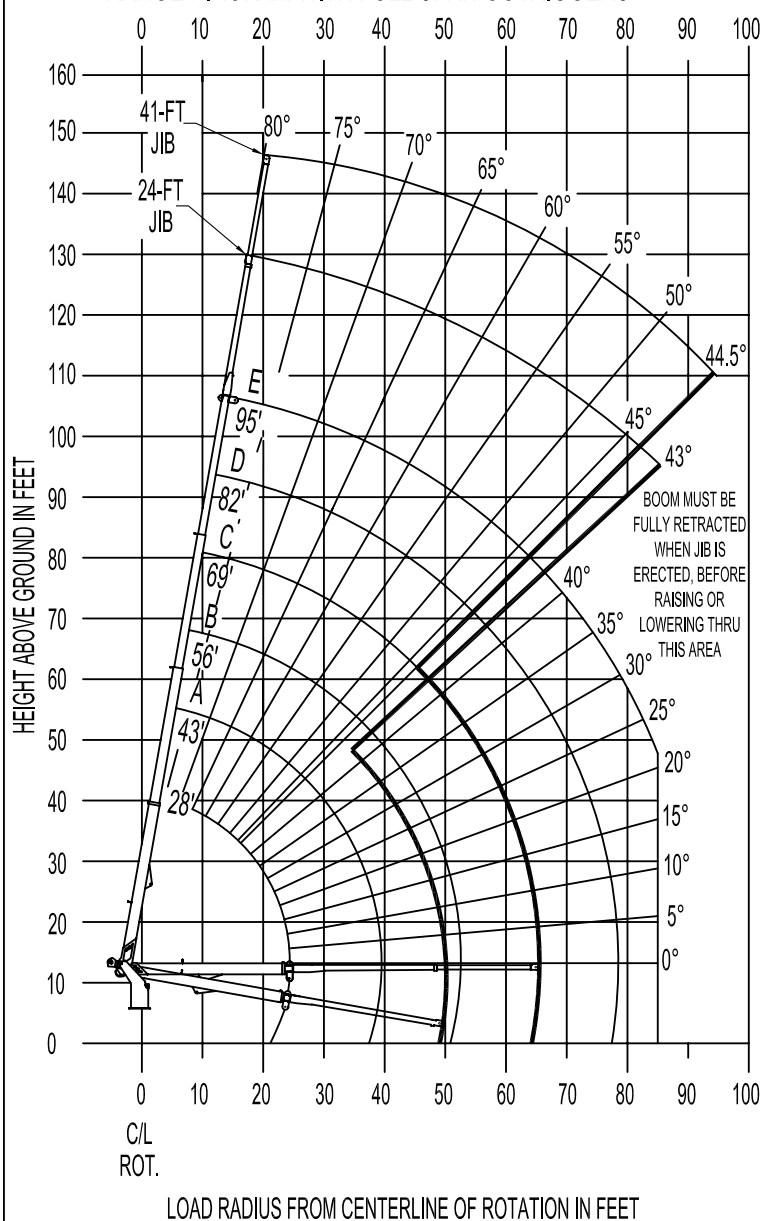


Elliott Equipment Company
4427 South 76th Circle
Omaha, NE 68127

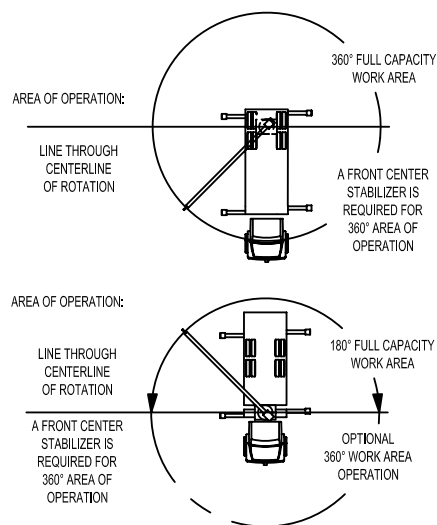
Phone: 402-592-4500
Fax: 402-592-4553
Email: sales@elliottequip.com

Built for You.
www.elliottequip.com

**BOOMTRUCK - 3095F****TECHNICAL SPECIFICATIONS****RANGE CHART - MAIN BOOM + JIB, FULL-SPAN OUTRIGGERS**
ELLIOTT
EQUIPMENT COMPANY

MODEL 3000 95-ft BOOM
RANGE DIAGRAM WITH FULL SPAN OUTRIGGERS**NOTE:**

1. Operate jib by radius when main boom is full extended. Increase boom angle if necessary to maintain load radius.
2. When boom is retracted, operate jib by boom angles. Do not exceed any rated jib capacities at reduced boom lengths.
3. Capacities do not exceed 85% stability.
4. Load ratings above bold line are structurally limited.
5. Personnel handling is allowed only with full span outriggers.
6. Boom load ratings are based on loaded boom radius. Loaded boom angles are given as reference only.



DO NOT PAINT OVER ANY LABELS

1113160

111308

ELLIOTT
EQUIPMENT COMPANY

 Elliott Equipment Company
4427 South 76th Circle
Omaha, NE 68127

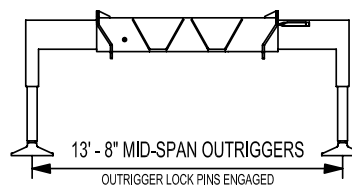
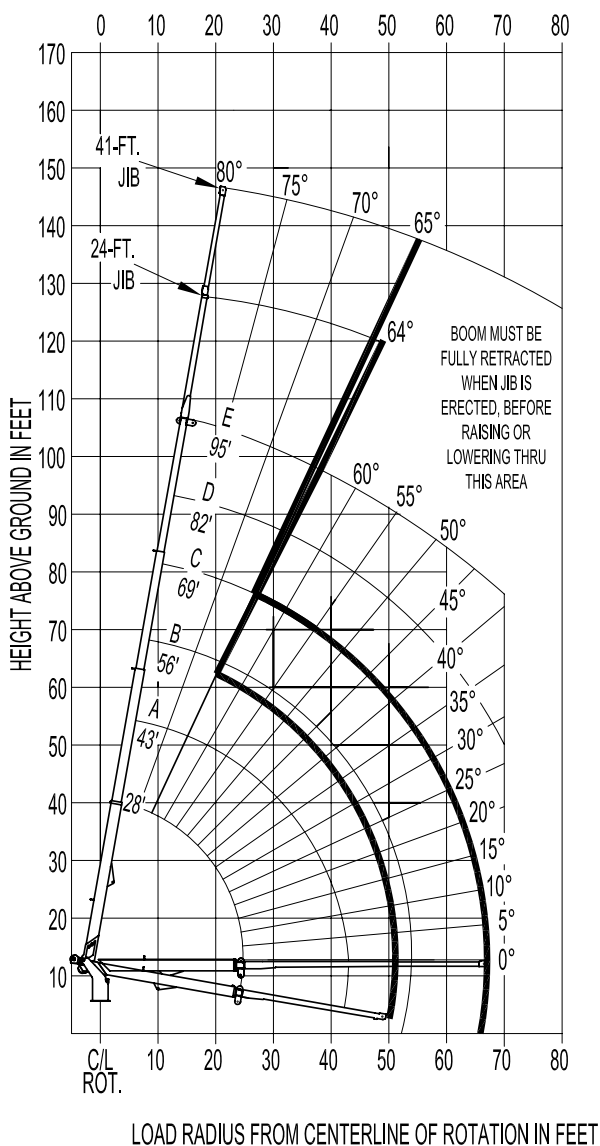
 Phone: 402-592-4500
Fax: 402-592-4553
Email: sales@elliottequip.com

Built for You.
www.elliottequip.com

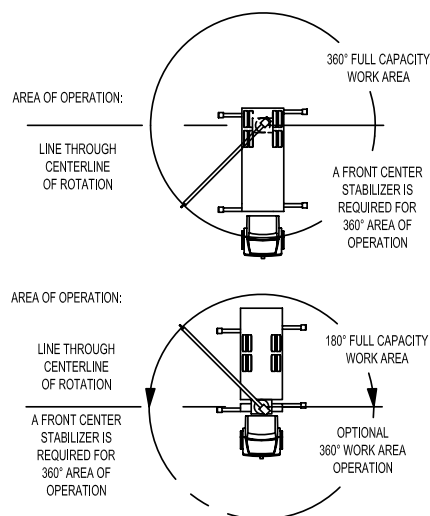
**BOOMTRUCK - 3095F****TECHNICAL SPECIFICATIONS****RANGE CHART - MAIN BOOM + JIB, MID-SPAN OUTRIGGERS**
ELLIOTT
EQUIPMENT COMPANY

MODEL 3000

95-ft BOOM

RANGE DIAGRAM WITH OUTRIGGERS AT MID-SPAN POSITION**NOTE:**

1. Operate jib by radius when main boom is full extended. Increase boom angle if necessary to maintain load radius.
2. When boom is retracted, operate jib by boom angles. Do not exceed any rated jib capacities at reduced boom lengths.
3. Capacities do not exceed stability based on ISO 4305-1991.
4. Load ratings above bold line are structurally limited.
5. Personnel handling is allowed only with full span outriggers.
6. Boom load ratings are based on loaded boom radius. Loaded boom angles are given as reference only.



DO NOT PAINT OVER ANY LABELS

1113160

111308

ELLIOTT
EQUIPMENT COMPANY

 Elliott Equipment Company
4427 South 76th Circle
Omaha, NE 68127

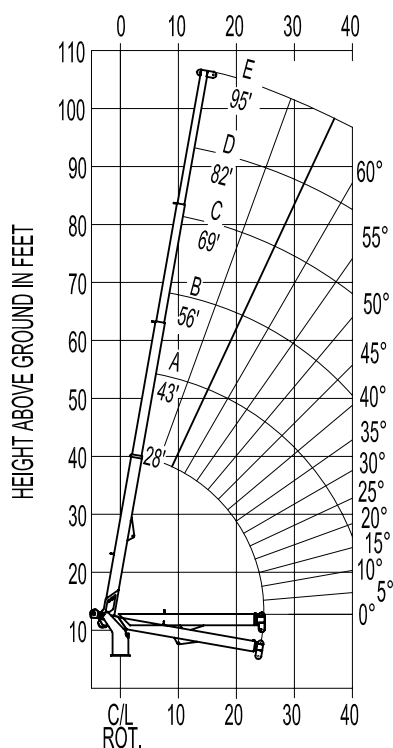
 Phone: 402-592-4500
Fax: 402-592-4553
Email: sales@elliottequip.com
Built for You.
www.elliottequip.com

**BOOMTRUCK - 3095F****TECHNICAL SPECIFICATIONS****RANGE CHART - MAIN BOOM, RETRACTED OUTRIGGERS**
ELLIOTT
EQUIPMENT COMPANY

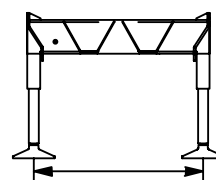
MODEL 3000

95-ft BOOM

RANGE DIAGRAM WITH OUTRIGGERS
AT FULL HORIZONTAL RETRACTED POSITION



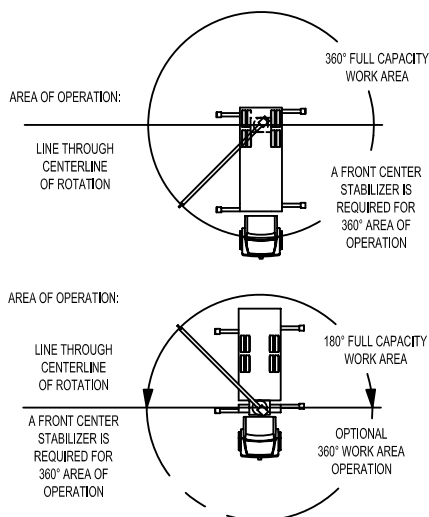
LOAD RADIUS FROM CENTERLINE OF ROTATION IN FEET



7' x 5' NO-SPAN OUTRIGGERS

NOTE:

1. Capacities do not exceed stability based on ISO 4305-1991.
2. Load ratings above bold line are structurally limited.
3. Personnel handling is allowed only with full span outriggers.
4. Boom load ratings are based on loaded boom radius.
Loaded boom angles are given as reference only.



DO NOT PAINT OVER ANY LABELS

1113160

111308

ELLIOTT
EQUIPMENT COMPANY

Elliott Equipment Company
4427 South 76th Circle
Omaha, NE 68127

Phone: 402-592-4500
Fax: 402-592-4553
Email: sales@elliottequip.com

Built for You.
www.elliottequip.com

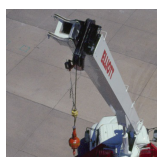
**BOOMTRUCK - 3095F****TECHNICAL SPECIFICATIONS****TRUCK CHASSIS SPECIFICATIONS**

| | 3095F BoomTruck |
|--------------------------------|--|
| Wheelbase (WB) | 268" / 681 cm |
| Cab to Tandem (CT) | 204" / 518 cm |
| Cab to End of Frame (EOF) | 334" / 848 cm |
| Frame Section Modulus | 30.0 in3-110,000 psi / 492 cm3-758 428 kPa |
| Front Axle Gross Weight Rating | 20,000 lb / 9071 kg |
| Rear Axle Gross Weight Rating | 40,000 lb / 18 143 kg |
| Integral Front Frame Rails | Required for Front Stabilizer |

Chassis data is minimum general requirements-not for engineering.
Actual dimensions and truck data will depend on truck selection and axle configuration.
*Minimum chassis weight is required to meet 85% stability requirements.

OPTIONS**Radio Remote Control**

Interference protected radio remotes let you get closer to your work and have full control over your machine. Includes battery charging feature and optional LMI screen.

**Pin-On Jib Attachments**

One piece & two piece telescoping or fixed jibs that stow on the side of the boom for easy placement while on the worksite.

**Continuous Boom Rotation**

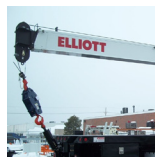
Add the convenience of 360 degree continuous rotation by adding a special boom rotation swivel for swinging without stops.

**Digger / Auger Attachment**

Dig faster and deeper with Elliott's auger attachment, offering 41' of digging range and a hydraulically powered auger that stows on the boom.

**Tool Boxes**

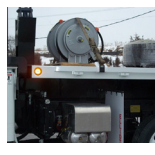
Optional tool boxes and bed storage can accommodate any storage need for tools, work materials and more.

**Hook Block for Multi-Part Line**

Elliott can install a 2-3 part hook block or a 4 part-hook block to improve lifting capabilities. The block can be stored at the rear of the bed.

**Gravity Levelled Basket**

Elliott's pin-on work platform pins onto the boom for easy installation and removal. Gravity leveling and mechanical rotation makes it a great accessory for any worksite.

**Body Mounted Hose Reels and Circuits**

Let us work with you to customize your tool compatability by adding hose reels or hydraulic circuits to the crane bed.