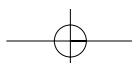


Demag CC 1800



Mobile cranes in perfection





Zeichenerklärung

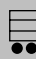
Key

Légende

 Spur · Track · Voie

 Gegengewicht · counterweight · contrepoids

 Superlift-Gegengewicht · Superlift counterweight · contrepoids Superlift

 Gegengewichtswagen (Tragfähigkeiten für Gegengewichtswagen auf Anfrage).
Counterweight carrier (Lifting capacities for counterweight carrier on request).
Chariot-contrepoids (Capacités de levage pour chariot-contrepoids sur demande).

„D“ 

S: schwer · heavy · lourd

L: leicht · light · léger

H: Hauptausleger · main boom · flèche principale

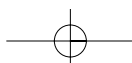
F: Starrer Hilfsausleger · fixed fly jib · fléchette fixe

W: Wippbarer Hilfsausleger · luffing fly jib · fléchette à volée variable

SL: Superlift

SGL 46,5 m: Schwere Grundlänge 46,5 m (Typ 2420) · Heavy base length 46.5 m (type 2420) · Longueur de base lourde 46,5 m (type 2420)

SGL 70,5 m: Schwere Grundlänge 70,5 m (Typ 2420) · Heavy base length 70.5 m (type 2420) · Longueur de base lourde 70,5 m (type 2420)





Inhalt Contents Contenu

Technische Daten · Specifications · Caractéristiques

Technische Daten · Specifications · Caractéristiques	7
Ausleger-Kombinationen · Boom combinations · Combinaisons de flèche	11
Technische Daten · Specifications · Caractéristiques	13

Hauptausleger · Main boom · Flèche principale

Arbeitsbereiche · Working ranges · Portées (SH, SH/LH)	14
Tragfähigkeiten · Lifting capacities · Capacités de levage (SH, SH/LH)	15
Tragfähigkeiten mit Superlift · Lifting capacities with Superlift · Capacités de levage avec Superlift (SSL, SSL/LSL)	19
Arbeitsbereiche mit Superlift · Working ranges with Superlift · Portées avec Superlift (SSL, SSL/LSL)	25

Starrer Hilfsausleger · Fixed fly jib · Fléchette fixe

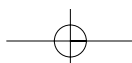
Arbeitsbereiche · Working ranges · Portées (LF 10°, SGL 46,5 m)	26
Tragfähigkeiten · Lifting capacities · Capacités de levage (LF, SGL 46,5 m)	27
Arbeitsbereiche · Working ranges · Portées (LF 30°, SGL 46,5 m)	33
Arbeitsbereiche · Working ranges · Portées (LF 10°)	34
Tragfähigkeiten · Lifting capacities · Capacités de levage	35
Arbeitsbereiche · Working ranges · Portées (LF 30°)	41

Wippbarer Hilfsausleger · Luffing fly jib · Fléchette à volée variable

Arbeitsbereiche · Working ranges · Portées (SW)	42
Tragfähigkeiten · Lifting capacities · Capacités de levage (SW)	43
Arbeitsbereiche mit Superlift · Working ranges with Superlift · Portées avec Superlift (SWSL)	46
Tragfähigkeiten mit Superlift · Lifting capacities with Superlift · Capacités de levage avec Superlift (SWSL)	47

Technische Beschreibung · Technical description · Descriptif technique

Raupenunterwagen · Oberwagen · Zusatzausrüstung	55
Auslegervarianten S, S/L und L	56
Crawler carrier · Superstructure · Optional equipment	57
Boom combinations S, S/L and L	58
Châssis à chenilles · Partie tournante · Equipements optionnels	59
Combinaisons de flèche S, S/L et L	60





Technische Daten

Specifications

Caractéristiques

Fahrleistungen
Carrier performance
Performance du porteur

Fahrgeschwindigkeit

Travel speed

Vitesse de déplacement

max. 2 km/h

Bodendruck

Ground pressure

Pression au sol

Bodendruck bei 199 t Gesamtgewicht

Ground pressure (based on total weight of 199 t)

Pression au sol (pour un poids total de 199 t)

11,2 N/cm²

Unterflaschen

Hook blocks

Crochets

Tragfähigkeit

Capacity

Capacité

Anzahl der Rollen

Number of sheaves

Nombre de poulies

Strangzahl

Number of lines

Nombre de brins

Gewicht

Weight

Poids

„D“

300 t

13

26

6000 kg

3,50 m

160 t

7

13

4800 kg

3,00 m

80 t

3

7

3300 kg

2,50 m

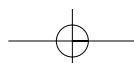
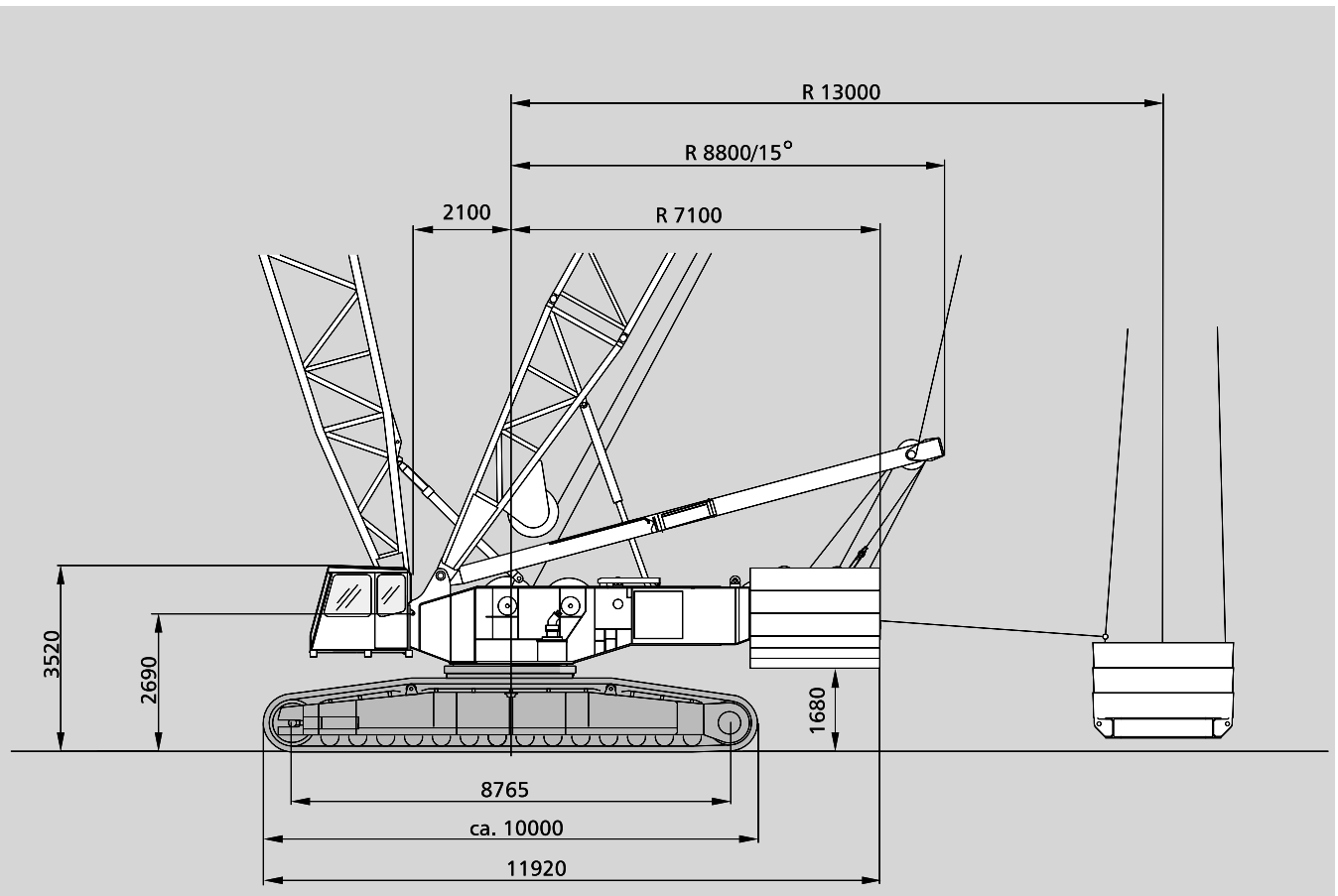
40 t

1

3

1700 kg

2,00 m





Technische Daten

Specifications

Caractéristiques

Arbeitsgeschwindigkeiten (stufenlos regelbar)

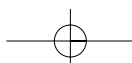
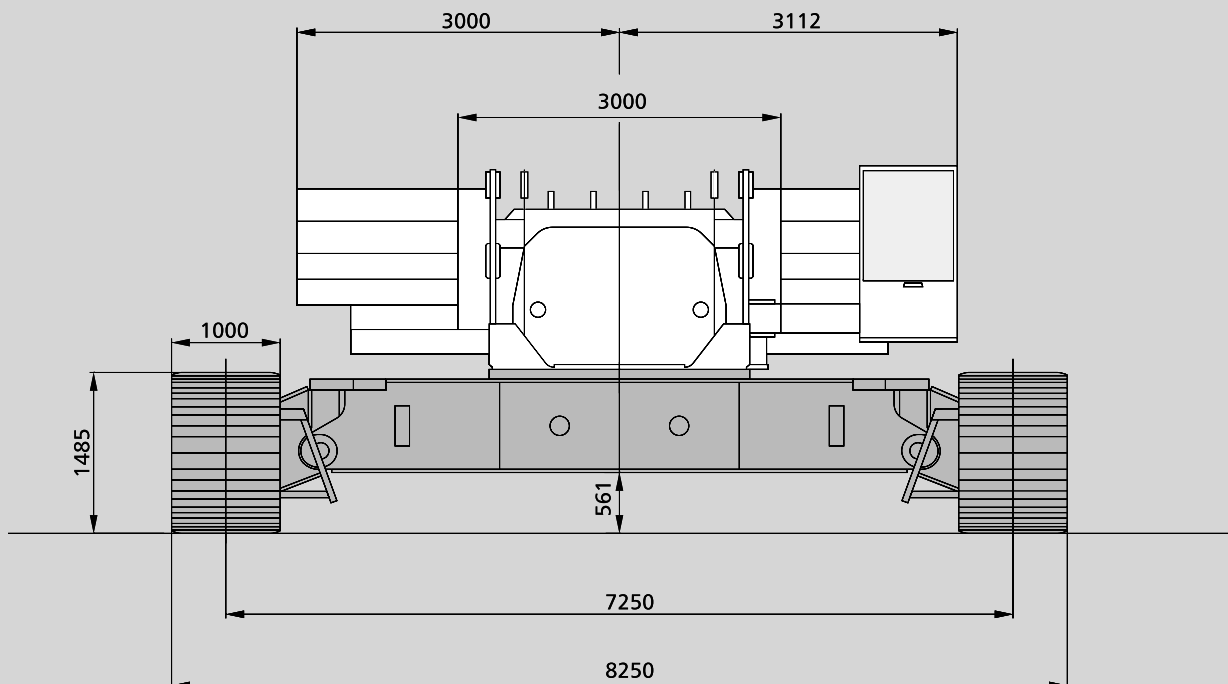
Working speeds (infinitely variable)

Vitesses de travail (réglables sans paliers)

Antriebe Mechanisms Mécanismes	Geschwindigkeiten ¹⁾ Speeds ¹⁾ Vitesses ¹⁾	zulässiger Seilzug je Strang Single line pull Effort sur brin simple	Länge des Hubseils Length of hoist rope Longueur du câble de levage
Hubwerk 1 Hoist 1 Treuil de levage 1	max. 123 m/min	133 kN / 118 kN ²⁾	980 m
Hubwerk 2 Hoist 2 Treuil de levage 2	max. 119 m/min	133 kN / 121 kN ²⁾	650 m
Wippwerk Hauptausleger Boom derricking Variation de flèche	max. 46,5 m/min		700 m
Einziehwerk Boom hoist Relevage de flèche	max. 25,0 m/min		2 x 185 m
Wippwerk Hilfsausleger Jib luffing Variation de volée	max. 43 m/min		450 m
Drehwerk (U/min) Slewing (RPM) Orientation (tr/mn)	1,1		

1) Oberste Lage · top layer · couche supérieure

2) Angabe ohne/mit Wirkungsgrad der Einscherung · without/with reeving effect considered · sans/avec effort de mouflage





Technische Daten

Specifications

Caractéristiques

Gewichte

Weights

Poids

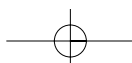
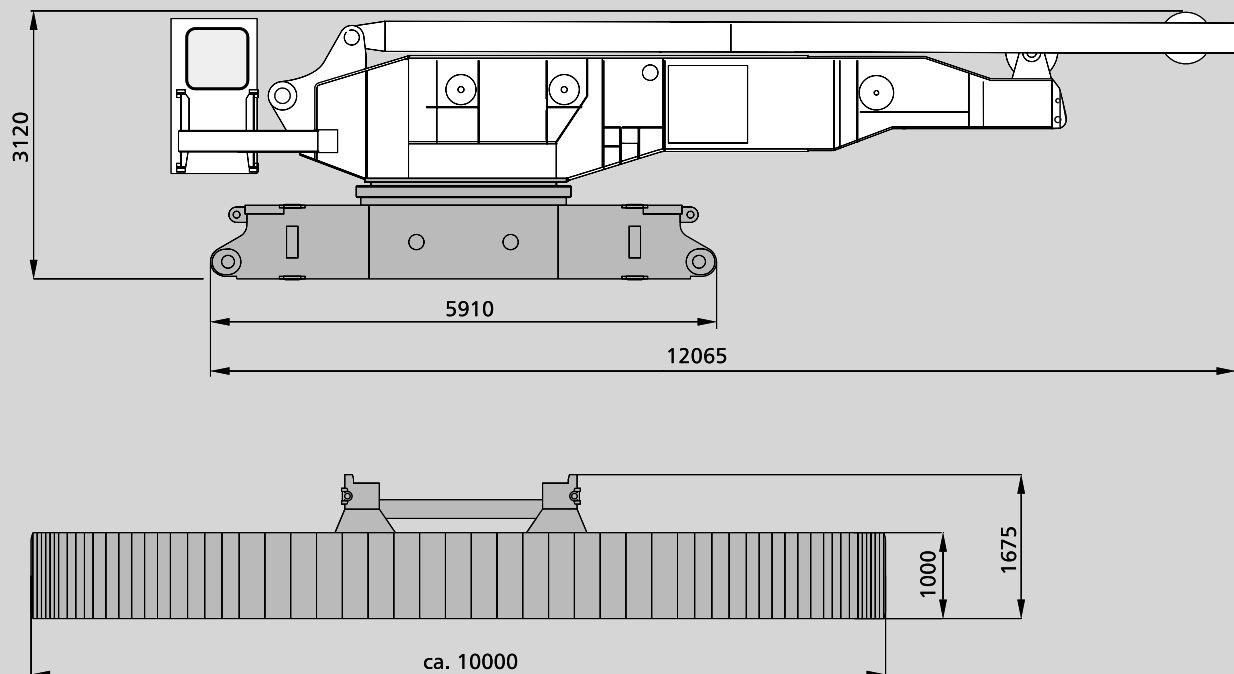
Gesamtgewicht einschl. 90 t Gegengewicht, 18 m Hauptausleger SH und Unterflasche Total weight incl. 90 t counterweight, 18 m SH boom and hook block Poids avec 90 t de contrepoids, flèche SH de 18 m et crochet	199 t
Oberwagen (mit 2 Winden, A-Bock) Superstructure (with 2 winches, A-frame) Partie supérieure (avec 2 tambours, chevalet)	29,6 t
Mittelstück ohne Abstützung Carbody without jacks Partie centrale sans support	14,5 t
Mittelstück mit Abstützung Carbody with track shoes Partie centrale avec support	16,5 t
Raupen mit Bodenplatten Crawlers with pads Chenilles avec patins	2 x 24 t

Gerätevarianten

Machine versions

Versions de machines

	Gegengewicht 90 t Counterweight 90 t Contrepoids 90 t	Zusatzgegengewicht 30 t und Zentralballast 30 t Add. counterweight 30 t and central ballast 30 t Contrepoids suppl. 30 t et lest central 30 t
Standard	●	
Option		●



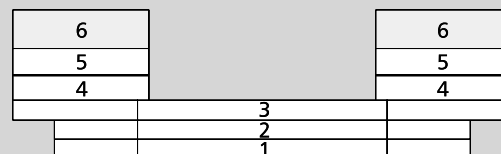


Technische Daten Specifications Caractéristiques

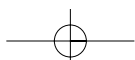
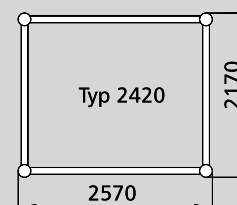
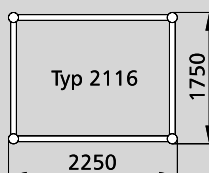
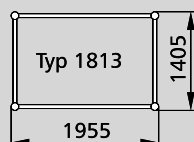
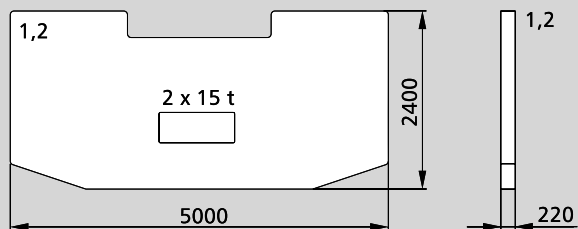
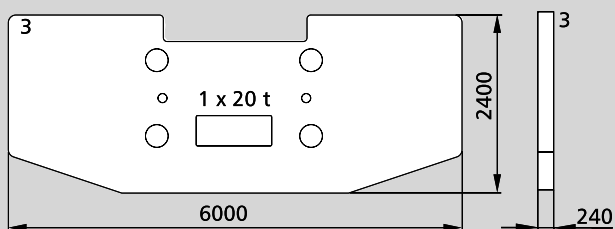
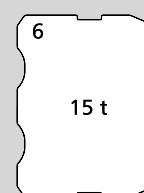
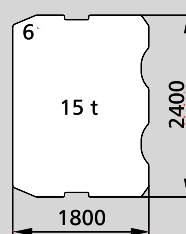
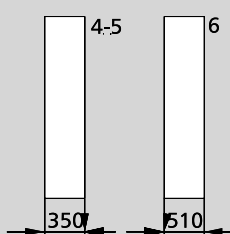
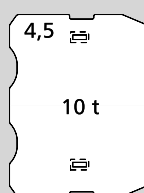
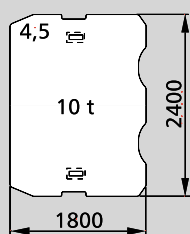
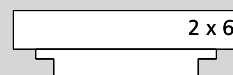
Variante Standard
Standard configuration
Configuration standard



Variante für Selbstmontage
Self-assembly configuration
Configuration automontage



Zentralballast
Central ballast
Lest central

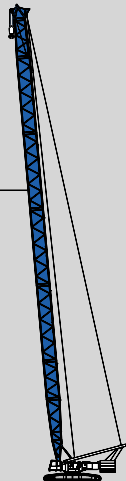




Ausleger-Kombinationen Boom combinations Combinaisons de flèche

Typ: 2420
18-72 m

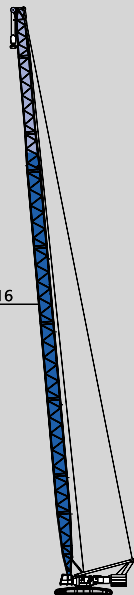
SH



Typ: 2420/2116
78-90 m

SH/LH

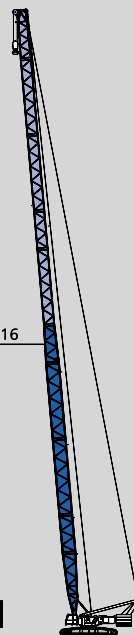
SGL 70,5 m



Typ: 2420/2116
54-96 m

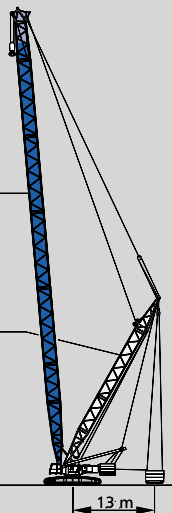
SH/LH

SGL 46,5 m



Typ: 2420
30-72 m

SSL ¹⁾



Typ: 2116
30 m

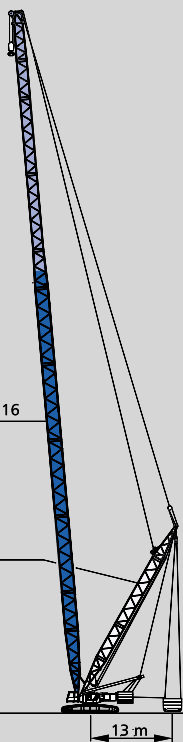
Typ: 2420/2116
78-108 m

Typ: 2116
30 m

SSL/LSL ¹⁾

SGL 70,5 m

STANDARDLÄNGEN
STANDARD LENGTHS
LONGUEURS STANDARD

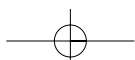
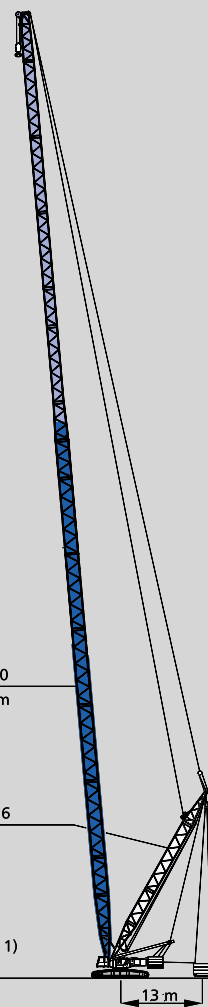


Typ: 2420
78-150 m

SSL/LSL ¹⁾

SGL 70,5 m

SONDERLÄNGEN mit Spezialeinrichtung auf Anfrage
SPECIAL LENGTHS with special attachment on request
LONGUEURS SPECIALES avec équipement spécial sur demande





Technische Daten Ausleger-Kombinationen

Specifications Boom combinations

Caractéristiques Combinaisons de flèche

Aufrichten / Ablegen der CC 1800 Auslegersysteme
Erection / lowering of the CC 1800 boom systems to the ground
Montée / placement sur sol des systèmes de flèche de la CC 1800

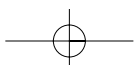
Variante Version Version	Hauptausleger Main boom Flèche principale m	Hilfsausleger Fly jib Fléchette m	Gegengewicht Counterweight Contrepoids t	Zentralballast Central ballast Lest central t	Bemerkungen Remarks Observations
SH	18 – 72	–	120	30	
SH/LH, SGL 46,5 m	54 – 90 *96	– –	120 120	30 30	* Unterflasche am Boden * Hook block on the ground * Crochet sur sol
SH/LH, SGL 70,5 m	78 – 84 *90	– –	120 120	30 30	* Unterflasche am Boden * Hook block on the ground * Crochet sur sol
SW	24 – 60 **60 *60	18 – 66 30 – 36 42	120 120	30 30	Ohne Rollensatz am Hauptausleger Without add. sheave assembly on boom head Sans jeu de poulies suppl. en tête de flèche * Unterflasche am Boden * Hook block on the ground * Crochet sur sol ** NUR MIT HILFSKRAN ODER ZUSATZAUSRÜSTUNG ** ONLY WITH ASSIST CRANE OR AUXILIARY EQUIPMENT ** UNIQUEMENT AVEC GRUE AUXILIAIRE OU AUTRE EQUIPEMENT AUXILIAIRE
LF SGL 46,5 m 10°, 30°	54 – 84 *78 *84 **84	12 – 36 36 24 36	120 120 120	30 30 30	Ohne Rollensatz am Hauptausleger Without add. sheave assembly on boom head Sans jeu de poulies suppl. en tête de flèche * Unterflasche am Boden * Hook block on the ground * Crochet sur sol ** NUR MIT HILFSKRAN ODER ODER ZUSATZAUSRÜSTUNG ** ONLY WITH ASSIST CRANE OR AUXILIARY EQUIPMENT ** UNIQUEMENT AVEC GRUE AUXILIAIRE OU AUTRE EQUIPEMENT AUXILIAIRE
LF 10°, 30°	30 – 72 *72	12 – 36 36	120 120	30 30	Ohne Rollensatz am Hauptausleger Without add. sheave assembly on boom head Sans jeu de poulies suppl. en tête de flèche * Unterflasche am Boden * Hook block on the ground * Crochet sur sol
SSL	30 – 72	–	–	–	mit SL-Gegengewicht with SL-counterweight avec contrepoids SL
SSL/LSL	78 – 108	–	–	–	mit SL-Gegengewicht with SL-counterweight avec contrepoids SL
SWSL	30 – 72	18 – 66	–	–	mit SL-Gegengewicht with SL-counterweight avec contrepoids SL

Bemerkungen · Remarks · Remarques

Alle Varianten ohne Runner!
All versions without runner!
Toutes les versions sans potence!

Weitere Angaben auf Anfrage!
Further details on request!
Plus amples détails sur demande!

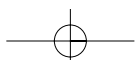
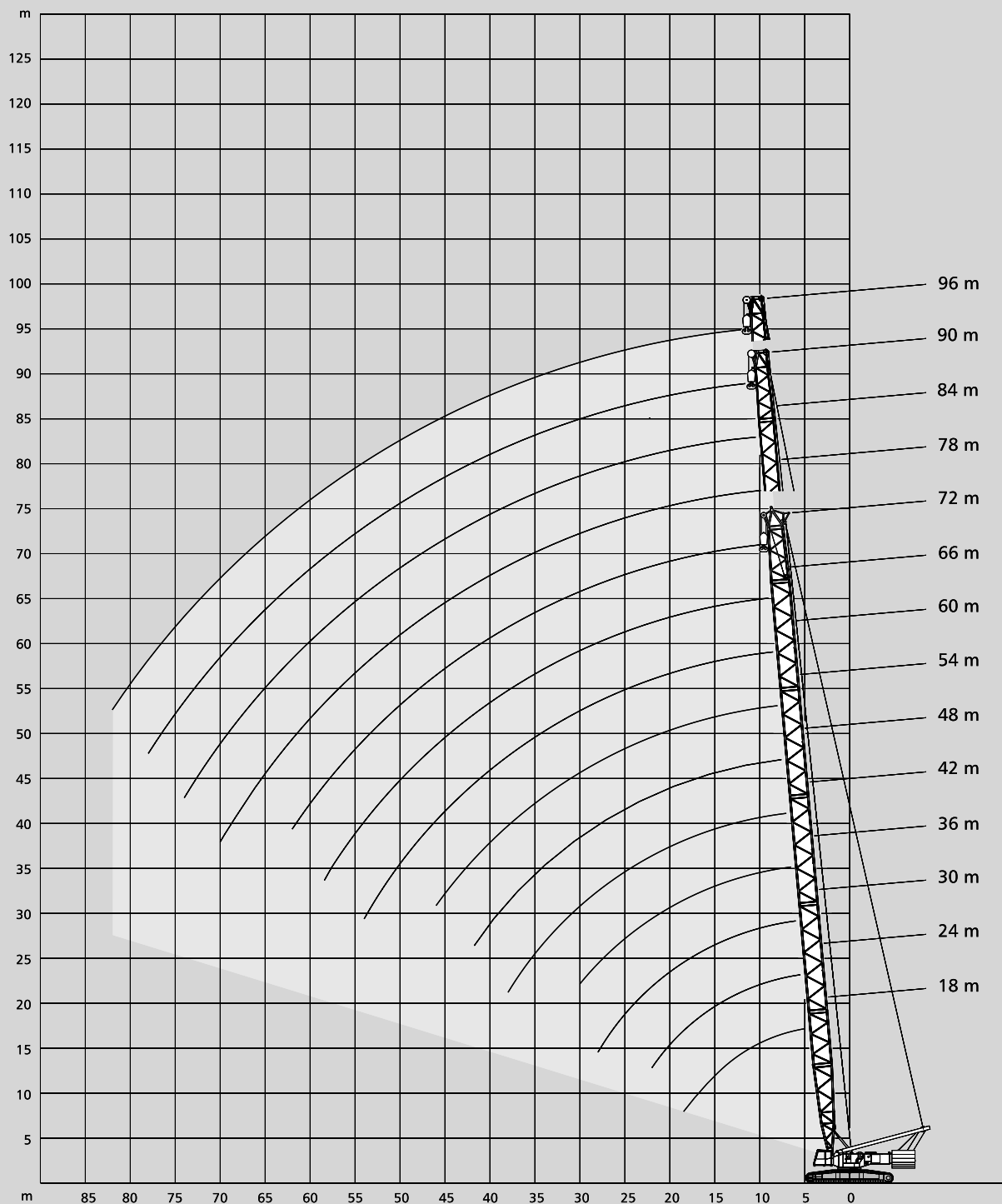
Alle Varianten Aufrichten über Leitrad!
Erection over idler wheel for all versions!
Montage par dessus le barbotin pour toutes les versions!





Arbeitsbereiche Hauptausleger Working ranges main boom Portées flèche principale

SH, SH/LH





Tragfähigkeiten Hauptausleger

Lifting capacities main boom

Capacités de levage flèche principale

120 t¹⁾  7,25 m 360° DIN/ISO

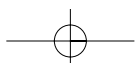
Ausladung		Hauptausleger · Main boom · Flèche principale									
Radius	Portée	18,0	24,0	30,0	36,0	42,0	48,0	54,0	60,0	66,0	72,0
m	m	t	t	t	t	t	t	t	t	t	t
5	273,0	-	-	-	-	-	-	-	-	-	-
5,5	263,0	285,0	-	-	-	-	-	-	-	-	-
6	254,0	276,0	-	-	-	-	-	-	-	-	-
7	239,0	260,0	252,0	-	-	-	-	-	-	-	-
8	227,0	244,0	243,0	242,0	240,0	-	-	-	-	-	-
9	203,0	202,0	202,0	201,0	200,0	200,0	-	-	-	-	-
10	170,0	169,0	169,0	168,0	167,0	167,0	166,0	140,0	-	-	-
12	128,0	127,0	126,0	125,0	124,0	124,0	123,0	123,0	112,0	94,0	-
14	102,0	101,0	100,0	99,0	98,0	98,0	97,0	97,0	96,0	89,0	-
16	84,0	83,0	82,0	81,0	81,0	80,0	79,0	79,0	78,0	78,0	-
18	72,0	70,0	70,0	69,0	68,0	67,0	67,0	66,0	66,0	65,0	-
SH	20	-	61,0	60,0	59,0	58,0	58,0	57,0	56,0	56,0	55,0
	22	-	54,0	53,0	52,0	51,0	50,0	49,0	49,0	48,0	48,0
	24	-	-	47,0	46,0	45,0	44,0	43,0	43,0	42,0	42,0
	26	-	-	42,0	41,0	40,0	39,0	38,0	38,0	37,0	37,0
	28	-	-	38,0	37,0	36,0	35,0	34,0	34,0	33,0	33,0
	30	-	-	-	33,0	32,0	31,0	31,0	30,0	30,0	29,0
	34	-	-	-	-	27,0	26,0	25,0	24,0	24,0	23,0
	38	-	-	-	-	23,0	22,0	21,0	20,0	20,0	19,0
	42	-	-	-	-	-	19,0	18,0	17,0	16,0	15,0
	46	-	-	-	-	-	-	15,0	14,0	13,0	12,0
	50	-	-	-	-	-	-	-	12,0	11,0	10,0
	54	-	-	-	-	-	-	-	10,0	9,0	8,0
	58	-	-	-	-	-	-	-	-	7,0	6,0
	62	-	-	-	-	-	-	-	-	-	5,0

120 t¹⁾  7,25 m nach vorne · over front · sur l'avant DIN/ISO

Ausladung		Hauptausleger · Main boom · Flèche principale									
Radius	Portée	18,0	24,0	30,0	36,0	42,0	48,0	54,0	60,0	66,0	72,0
m	m	t	t	t	t	t	t	t	t	t	t
5	300,0	-	-	-	-	-	-	-	-	-	-
5,5	300,0	300,0	-	-	-	-	-	-	-	-	-
6	300,0	300,0	-	-	-	-	-	-	-	-	-
7	280,0	279,0	252,0	-	-	-	-	-	-	-	-
8	246,0	244,0	243,0	242,0	240,0	-	-	-	-	-	-
9	215,0	214,0	213,0	211,0	210,0	203,0	-	-	-	-	-
10	191,0	190,0	189,0	188,0	187,0	186,0	167,0	140,0	-	-	-
12	156,0	155,0	154,0	153,0	152,0	151,0	150,0	134,0	112,0	94,0	-
14	122,0	121,0	121,0	120,0	119,0	119,0	118,0	118,0	106,0	89,0	-
16	100,0	99,0	99,0	98,0	97,0	96,0	96,0	95,0	95,0	84,0	-
18	85,0	84,0	83,0	82,0	81,0	81,0	80,0	79,0	79,0	79,0	-
SH	20	-	72,0	71,0	70,0	69,0	69,0	68,0	68,0	67,0	67,0
	22	-	63,0	62,0	61,0	60,0	60,0	59,0	59,0	58,0	58,0
	24	-	-	55,0	54,0	53,0	53,0	52,0	51,0	51,0	50,0
	26	-	-	49,0	48,0	47,0	47,0	46,0	45,0	45,0	44,0
	28	-	-	45,0	43,0	42,0	42,0	41,0	40,0	40,0	39,0
	30	-	-	-	39,0	38,0	38,0	37,0	36,0	36,0	35,0
	34	-	-	-	-	32,0	31,0	30,0	30,0	29,0	29,0
	38	-	-	-	-	27,0	26,0	25,0	25,0	24,0	24,0
	42	-	-	-	-	-	23,0	22,0	21,0	20,0	19,0
	46	-	-	-	-	-	-	19,0	18,0	17,0	16,0
	50	-	-	-	-	-	-	-	15,0	14,0	13,0
	54	-	-	-	-	-	-	-	13,0	12,0	11,0
	58	-	-	-	-	-	-	-	-	10,0	9,0
	62	-	-	-	-	-	-	-	-	-	8,0

Bemerkungen · Remarks · Remarques

- 1) mit Zentralballast 30 t
 1) with 30 t central ballast
 1) avec 30 t de lest central





Tragfähigkeiten Hauptausleger

Lifting capacities main boom

Capacités de levage flèche principale

90 t¹⁾  7,25 m 360° DIN/ISO

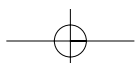
Ausladung Radius Portée		Hauptausleger · Main boom · Flèche principale										
m		18,0	24,0	30,0	36,0	42,0	48,0	54,0	60,0	66,0	72,0	
		t	t	t	t	t	t	t	t	t	t	
	5	300,0	-	-	-	-	-	-	-	-	-	
	5,5	300,0	300,0	-	-	-	-	-	-	-	-	
	6	300,0	300,0	-	-	-	-	-	-	-	-	
	7	262,0	261,0	252,0	-	-	-	-	-	-	-	
	8	204,0	204,0	203,0	202,0	202,0	-	-	-	-	-	
	9	165,0	164,0	163,0	163,0	162,0	162,0	-	-	-	-	
	10	138,0	137,0	136,0	135,0	135,0	134,0	134,0	133,0	-	-	
	12	103,0	102,0	101,0	101,0	100,0	99,0	99,0	98,0	98,0	94,0	
	14	82,0	81,0	80,0	79,0	78,0	78,0	77,0	77,0	76,0	76,0	
	16	67,0	66,0	66,0	65,0	64,0	63,0	63,0	62,0	62,0	61,0	
	18	57,0	56,0	55,0	54,0	53,0	53,0	52,0	52,0	51,0	51,0	
SH	20	-	48,0	47,0	46,0	46,0	45,0	44,0	44,0	43,0	43,0	
	22	-	42,0	41,0	40,0	39,0	39,0	38,0	38,0	37,0	37,0	
	24	-	-	37,0	35,0	35,0	34,0	33,0	33,0	32,0	32,0	
	26	-	-	33,0	31,0	31,0	30,0	29,0	29,0	28,0	28,0	
	28	-	-	29,0	28,0	27,0	26,0	26,0	25,0	25,0	24,0	
	30	-	-	-	25,0	24,0	24,0	23,0	22,0	22,0	21,0	
	34	-	-	-	-	20,0	19,0	18,0	18,0	17,0	16,0	
	38	-	-	-	-	17,0	16,0	15,0	14,0	13,0	12,0	
	42	-	-	-	-	-	13,0	12,0	11,0	10,0	10,0	
	46	-	-	-	-	-	-	10,0	9,0	8,0	7,0	
	50	-	-	-	-	-	-	-	7,0	6,0	5,0	
	54	-	-	-	-	-	-	-	5,0	4,0	4,0	
	58	-	-	-	-	-	-	-	-	3,0	-	
	62	-	-	-	-	-	-	-	-	-	-	

90 t  7,25 m 360° DIN/ISO

Ausladung Radius Portée		Hauptausleger · Main boom · Flèche principale										
m		18,0	24,0	30,0	36,0	42,0	48,0	54,0	60,0	66,0	72,0	
		t	t	t	t	t	t	t	t	t	t	
	5,5	-	238,0	-	-	-	-	-	-	-	-	
	6	210,0	231,0	-	-	-	-	-	-	-	-	
	7	199,0	220,0	236,0	-	-	-	-	-	-	-	
	8	186,0	185,0	185,0	184,0	183,0	-	-	-	-	-	
	9	150,0	149,0	149,0	148,0	147,0	147,0	-	-	-	-	
	10	125,0	124,0	124,0	123,0	122,0	122,0	121,0	121,0	-	-	
	12	94,0	93,0	92,0	91,0	90,0	90,0	89,0	89,0	88,0	88,0	
	14	74,0	73,0	72,0	72,0	71,0	70,0	70,0	69,0	69,0	68,0	
	16	61,0	60,0	59,0	58,0	57,0	57,0	56,0	56,0	55,0	55,0	
	18	52,0	51,0	50,0	49,0	48,0	47,0	47,0	46,0	46,0	45,0	
	20	-	43,0	43,0	42,0	41,0	40,0	39,0	39,0	38,0	38,0	
SH	22	-	38,0	37,0	36,0	35,0	35,0	34,0	33,0	33,0	32,0	
	24	-	-	33,0	32,0	31,0	30,0	29,0	29,0	28,0	28,0	
	26	-	-	29,0	28,0	27,0	26,0	26,0	25,0	24,0	24,0	
	28	-	-	26,0	25,0	24,0	23,0	22,0	22,0	21,0	21,0	
	30	-	-	-	22,0	21,0	21,0	20,0	19,0	19,0	18,0	
	34	-	-	-	-	17,0	16,0	15,0	15,0	14,0	13,0	
	38	-	-	-	-	14,0	13,0	12,0	11,0	11,0	10,0	
	42	-	-	-	-	-	11,0	10,0	9,0	8,0	7,0	
	46	-	-	-	-	-	-	8,0	7,0	6,0	5,0	
	50	-	-	-	-	-	-	-	5,0	4,0	3,0	
	54	-	-	-	-	-	-	-	4,0	3,0	-	
	58	-	-	-	-	-	-	-	-	-	-	

Bemerkungen · Remarks · Remarques

- 1) mit Zentralballast 30 t
 1) with 30 t central ballast
 1) avec 30 t de lest central





Tragfähigkeiten Hauptausleger

Lifting capacities main boom

Capacités de levage flèche principale

120 t¹⁾  7,25 m 360° DIN/ISO

Ausladung Radius Portée		Hauptausleger · Main boom · Flèche principale													
m		54,0	60,0	66,0	72,0	78,0	84,0	90,0	96,0				78,0	84,0	90,0
m		t	t	t	t	t	t	t	t				t	t	t
	9	140,0	-	-	-	-	-	-	-				-	-	-
	10	140,0	117,0	102,0	-	-	-	-	-				-	-	-
	12	127,0	110,0	94,0	84,0	72,0	62,0	-	-				80,0	70,0	-
	14	100,0	100,0	87,0	77,0	68,0	59,0	48,0	41,0				74,0	69,0	56,0
	16	83,0	82,0	80,0	70,0	64,0	57,0	46,0	39,0				69,0	67,0	54,0
	18	70,0	69,0	69,0	64,0	60,0	55,0	44,0	37,0				64,0	65,0	52,0
	20	60,0	60,0	59,0	59,0	56,0	53,0	42,0	36,0				58,0	58,0	50,0
	22	52,0	52,0	52,0	51,0	51,0	51,0	41,0	34,0				50,0	50,0	49,0
	24	46,0	46,0	46,0	45,0	45,0	45,0	39,0	33,0				44,0	44,0	44,0
	26	41,0	41,0	41,0	40,0	40,0	40,0	37,0	32,0				39,0	39,0	39,0
	28	37,0	37,0	37,0	36,0	36,0	35,0	35,0	31,0				35,0	35,0	34,0
SH/LH ²⁾	30	34,0	33,0	33,0	33,0	32,0	32,0	32,0	30,0				32,0	31,0	31,0
	34	28,0	27,0	27,0	27,0	27,0	26,0	26,0	25,0				26,0	25,0	25,0
	38	24,0	23,0	23,0	22,0	22,0	22,0	22,0	21,0				21,0	21,0	21,0
	42	20,0	20,0	20,0	19,0	19,0	18,0	18,0	17,0				18,0	17,0	17,0
	46	18,0	17,0	17,0	16,0	16,0	15,0	15,0	14,0				15,0	14,0	14,0
	50	-	15,0	14,0	14,0	14,0	13,0	13,0	12,0				13,0	12,0	12,0
	54	-	13,0	13,0	12,0	12,0	11,0	11,0	10,0				11,0	10,0	9,9
	58	-	-	11,0	10,0	10,0	9,0	9,0	8,0				9,3	8,5	8,2
	62	-	-	-	9,0	8,0	8,0	7,0	7,0				7,9	7,0	6,7
	66	-	-	-	-	7,0	6,0	6,0	5,0				6,6	5,8	5,4
	70	-	-	-	-	6,0	5,0	5,0	4,0				5,6	4,7	4,3
	74	-	-	-	-	-	4,0	4,0	3,0				-	3,7	3,3
	78	-	-	-	-	-	-	3,0	-				-	-	-
	82	-	-	-	-	-	-	-	-				-	-	-

120 t¹⁾  7,25 m nach vorne · over front · sur l'avant DIN/ISO

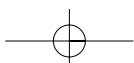
Ausladung Radius Portée		Hauptausleger · Main boom · Flèche principale													
m		54,0	60,0	66,0	72,0	78,0	84,0	90,0	96,0				78,0	84,0	90,0
m		t	t	t	t	t	t	t	t				t	t	t
	9	140,0	-	-	-	-	-	-	-				-	-	-
	10	140,0	117,0	102,0	-	-	-	-	-				-	-	-
	12	135,0	110,0	94,0	84,0	72,0	62,0	-	-				80,0	70,0	-
	14	121,0	102,0	87,0	77,0	68,0	59,0	48,0	41,0				74,0	69,0	56,0
	16	99,0	95,0	80,0	70,0	64,0	57,0	46,0	39,0				69,0	67,0	54,0
	18	83,0	83,0	73,0	64,0	60,0	55,0	44,0	37,0				64,0	65,0	52,0
	20	71,0	71,0	67,0	59,0	56,0	53,0	42,0	36,0				59,0	63,0	50,0
	22	62,0	62,0	61,0	54,0	53,0	52,0	41,0	34,0				55,0	60,0	49,0
	24	55,0	54,0	54,0	50,0	49,0	51,0	39,0	33,0				50,0	52,0	47,0
	26	49,0	48,0	48,0	46,0	46,0	47,0	37,0	32,0				46,0	46,0	46,0
	28	44,0	43,0	43,0	42,0	43,0	42,0	36,0	31,0				42,0	41,0	41,0
SH/LH ²⁾	30	40,0	39,0	39,0	38,0	39,0	38,0	35,0	30,0				38,0	37,0	37,0
	34	33,0	33,0	32,0	32,0	32,0	31,0	31,0	29,0				31,0	30,0	30,0
	38	28,0	28,0	27,0	27,0	27,0	26,0	26,0	26,0				26,0	25,0	25,0
	42	24,0	24,0	23,0	23,0	23,0	22,0	22,0	22,0				22,0	21,0	21,0
	46	21,0	21,0	20,0	19,0	20,0	19,0	19,0	18,0				19,0	18,0	18,0
	50	-	18,0	18,0	16,0	17,0	16,0	16,0	15,0				16,0	15,0	15,0
	54	-	16,0	16,0	14,0	15,0	14,0	14,0	13,0				14,0	13,0	13,0
	58	-	-	14,0	12,0	13,0	12,0	12,0	11,0				12,0	11,0	11,0
	62	-	-	-	9,0	11,0	10,0	10,0	9,0				10,0	9,7	9,3
	66	-	-	-	-	10,0	9,0	8,0	8,0				9,0	8,2	7,9
	70	-	-	-	-	8,0	8,0	7,0	7,0				8,0	7,0	6,6
	74	-	-	-	-	-	6,0	6,0	5,0				-	6,0	5,5
	78	-	-	-	-	-	-	5,0	4,0				-	-	4,5
	82	-	-	-	-	-	-	-	3,0				-	-	-

Bemerkungen · Remarks · Remarques

1) mit Zentralballast 30 t
1) with 30 t central ballast
1) avec 30 t de lest central

2) Schwere Grundlänge 46,5 m (Typ 2420)
2) Heavy base length 46.5 m (type 2420)
2) Longueur de base lourde 46,5 m (type 2420)

3) Schwere Grundlänge 70,5 m (Typ 2420)
3) Heavy base length 70.5 m (type 2420)
3) Longueur de base lourde 70,5 m (type 2420)





Tragfähigkeiten Hauptausleger

Lifting capacities main boom

Capacités de levage flèche principale

90 t¹⁾  **7,25 m** **360°** **DIN/ISO**

Ausladung Radius Portée		Hauptausleger · Main boom · Flèche principale											
m		54,0	60,0	66,0	72,0	78,0	84,0	90,0	96,0				
t		t	t	t	t	t	t	t	t	78,0	84,0	90,0	
9	140,0	-	-	-	-	-	-	-	-	-	-	-	
10	137,0	117,0	102,0	-	-	-	-	-	-	-	-	-	
12	102,0	102,0	94,0	84,0	72,0	62,0	-	-	-	80,0	70,0	-	
14	81,0	80,0	80,0	77,0	68,0	59,0	48,0	41,0	-	74,0	69,0	56,0	
16	66,0	66,0	65,0	65,0	64,0	57,0	46,0	39,0	-	64,0	64,0	54,0	
18	55,0	55,0	55,0	54,0	54,0	54,0	44,0	37,0	-	54,0	53,0	52,0	
20	47,0	47,0	47,0	46,0	46,0	46,0	42,0	36,0	-	46,0	45,0	45,0	
22	41,0	41,0	41,0	40,0	40,0	40,0	39,0	34,0	-	39,0	39,0	39,0	
24	36,0	36,0	36,0	35,0	35,0	34,0	34,0	33,0	-	34,0	34,0	33,0	
26	32,0	32,0	31,0	31,0	31,0	30,0	30,0	29,0	-	30,0	30,0	29,0	
28	29,0	28,0	28,0	28,0	27,0	27,0	27,0	26,0	-	27,0	26,0	26,0	
SH/LH ²⁾	30	26,0	25,0	25,0	25,0	25,0	24,0	23,0	-	SH/LH ³⁾	24,0	23,0	23,0
	34	21,0	21,0	20,0	20,0	20,0	19,0	18,0	-		19,0	18,0	18,0
	38	18,0	17,0	17,0	16,0	16,0	16,0	15,0	15,0		15,0	15,0	14,0
	42	15,0	14,0	14,0	13,0	13,0	13,0	12,0	12,0		12,0	12,0	11,0
	46	13,0	12,0	12,0	11,0	11,0	10,0	10,0	9,0		10,0	9,5	9,3
	50	-	10,0	10,0	9,0	9,0	8,0	8,0	7,0		8,3	7,5	7,3
	54	-	9,0	8,0	7,0	7,0	6,0	6,0	6,0		6,7	5,9	5,6
	58	-	-	7,0	6,0	6,0	5,0	5,0	4,0		5,3	4,5	4,2
	62	-	-	-	5,0	5,0	4,0	4,0	3,0		4,1	3,3	3,0
	66	-	-	-	-	4,0	3,0	-	-		3,1	-	-
	70	-	-	-	-	3,0	-	-	-		-	-	-
	74	-	-	-	-	-	-	-	-		-	-	-

90 t  **7,25 m** **360°** **DIN/ISO**

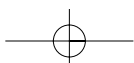
Ausladung Radius Portée		Hauptausleger · Main boom · Flèche principale											
m		54,0	60,0	66,0	72,0	78,0	84,0	90,0	96,0				
t		t	t	t	t	t	t	t	t	78,0	84,0	90,0	
9	140,0	-	-	-	-	-	-	-	-	-	-	-	
10	125,0	117,0	102,0	-	-	-	-	-	-	-	-	-	
12	92,0	92,0	92,0	84,0	72,0	62,0	-	-	-	80,0	70,0	-	
14	73,0	72,0	72,0	72,0	68,0	59,0	48,0	41,0	-	71,0	69,0	56,0	
16	59,0	59,0	59,0	58,0	58,0	57,0	46,0	39,0	-	58,0	57,0	54,0	
18	50,0	49,0	49,0	49,0	49,0	48,0	44,0	37,0	-	48,0	47,0	46,0	
20	42,0	42,0	42,0	41,0	41,0	41,0	40,0	36,0	-	41,0	40,0	39,0	
22	37,0	36,0	36,0	36,0	36,0	35,0	35,0	33,0	-	35,0	34,0	34,0	
24	32,0	32,0	32,0	31,0	31,0	30,0	30,0	29,0	-	30,0	30,0	29,0	
SH/LH ²⁾	26	28,0	28,0	28,0	27,0	27,0	27,0	26,0	25,0	SH/LH ³⁾	26,0	26,0	25,0
	28	25,0	25,0	25,0	24,0	24,0	24,0	23,0	22,0		23,0	23,0	22,0
	30	23,0	22,0	22,0	22,0	21,0	21,0	21,0	20,0		21,0	20,0	20,0
	34	19,0	18,0	18,0	17,0	17,0	16,0	16,0	15,0		16,0	15,0	15,0
	38	15,0	15,0	14,0	14,0	14,0	13,0	13,0	12,0		13,0	12,0	12,0
	42	13,0	12,0	12,0	11,0	11,0	10,0	10,0	9,0		10,0	9,7	9,4
	46	11,0	10,0	10,0	9,0	9,0	8,0	8,0	7,0		8,2	7,5	7,2
	50	-	8,0	8,0	7,0	7,0	6,0	6,0	5,0		6,4	5,6	5,4
	54	-	7,0	6,0	6,0	5,0	5,0	4,0	4,0		5,0	4,1	3,8
	58	-	-	5,0	5,0	4,0	3,0	3,0	-		3,7	2,9	2,5
	62	-	-	-	3,0	3,0	-	-	-		2,6	-	-
	66	-	-	-	-	-	-	-	-		-	-	-

Bemerkungen · Remarks · Remarques

1) mit Zentralballast 30 t
1) with 30 t central ballast
1) avec 30 t de lest central

2) Schwere Grundlänge 46,5 m (Typ 2420)
2) Heavy base length 46.5 m (type 2420)
2) Longueur de base lourde 46,5 m (type 2420)

3) Schwere Grundlänge 70,5 m (Typ 2420)
3) Heavy base length 70.5 m (type 2420)
3) Longueur de base lourde 70,5 m (type 2420)







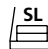

Tragfähigkeiten Hauptausleger mit Superlift

Lifting capacities main boom with Superlift

Capacités de levage flèche principale avec Superlift

120 t¹⁾   7,25 m SL-Radius 13 m 360° **DIN/ISO**

30 m Hauptausleger · Main boom · Flèche principale								
Ausladung Radius Portée t	SL 							
	0	40	80	120	160	180	200	
6	221	281	-	-	-	-	-	300
7	210	281	-	-	-	-	-	300
8	200	281	300	-	-	-	-	300
9	189	262	300	-	-	-	-	300
10	170	236	272	289	-	-	-	291
12	135	189	228	258	-	-	-	274
14	108	154	193	221	248	256	-	256
SSL	16	89	128	163	193	217	228	228
	18	75	109	141	169	192	203	203
	20	65	95	124	149	173	182	182
	22	57	83	110	133	155	165	165
	24	51	74	98	120	140	150	150
	26	46	67	89	109	128	134	134
	28	41	61	81	100	116	116	116

48 m Hauptausleger · Main boom · Flèche principale								
Ausladung Radius Portée t	SL 							
	0	40	80	120	160	180	200	
8	209	232*	-	-	-	-	-	242*
9	186	232*	242*	-	-	-	-	242*
10	167	232*	242*	-	-	-	-	242*
12	133	190	224	242*	-	-	-	242*
14	105	152	192	218	242*	-	-	242*
16	87	126	163	190	213	225*	-	225*
18	73	107	140	168	189	199	-	199
SSL	20	63	92	122	149	169	179	179
	22	55	81	107	132	153	162	162
	24	48	72	96	119	139	148	148
	26	43	65	86	108	127	136	136
	28	39	58	78	98	116	124	124
	30	35	53	72	90	107	115	115
	34	29	45	61	77	92	99	99
	38	24	39	53	67	80	86	86
	42	21	34	46	59	71	76	76

36 m Hauptausleger · Main boom · Flèche principale							
m	0 40 80 120 160 180 200						
	t	t	t	t	t	t	t
7	229	288	-	-	-	-	288
8	210	288	288	-	-	-	288
9	187	260	288	-	-	-	288
10	169	235	271	288	-	-	288
12	135	189	226	257	280	-	280
14	107	153	193	220	246	260	260
SSL	16	88	127	163	192	215	227
	18	74	108	141	169	191	201
	20	64	94	123	149	171	181
	22	56	82	109	133	155	164
	24	50	73	97	119	140	150
	26	44	66	88	108	127	136
	28	40	60	80	99	116	125
	30	36	55	73	91	107	115

54 m Hauptausleger · Main boom · Flèche principale								
m	0 40 80 120 160 180 200							
	t	t	t	t	t	t	t	
9	185	200	-	-	-	-	218*	
10	166	196	209*	-	-	-	218*	
12	133	190	209*	213*	-	-	213*	
14	105	152	191	209*	-	-	203*	
16	86	125	163	189	194	-	194	
18	72	106	140	167	185	-	185	
SSL	20	62	92	121	148	168	176	
	22	54	80	107	132	152	161	
	24	47	71	95	119	139	147	
	26	42	64	86	107	126	135	
	28	38	58	78	97	115	124	
	30	34	52	71	89	106	114	
	34	28	44	60	76	91	98	
	38	24	38	52	66	79	86	
	42	20	33	45	58	70	76	
	46	17	29	40	52	63	68	

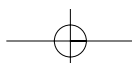
42 m Hauptausleger · Main boom · Flèche principale							
m	0 40 80 120 160 180 200						
	t	t	t	t	t	t	t
7	238	250	-	-	-	-	279*
8	209	250	274*	-	-	-	279*
9	186	250	274*	-	-	-	279*
10	168	234	270*	274*	-	-	279*
12	134	189	225	256	279*	-	279*
14	106	153	193	219	245	259*	259*
16	87	126	163	191	214	226	226
18	73	107	141	169	190	200	200
SSL	20	63	93	122	148	170	180
	22	55	82	108	132	154	163
	24	49	73	96	119	139	149
	26	44	65	87	108	127	136
	28	39	59	79	99	116	125
	30	36	54	72	91	107	115
	34	30	46	62	78	92	99
	38	25	39	54	68	81	87

60 m Hauptausleger · Main boom · Flèche principale								
m	0 40 80 120 160 180 200							
	t	t	t	t	t	t	t	
9	167	169	-	-	-	-	201*	
10	167	169	-	-	-	-	201*	
12	132	169	181*	-	-	-	201*	
14	104	151	181*	184*	-	-	201*	
16	85	125	163	181*	-	-	191*	
18	72	106	139	167	181*	-	181*	
20	61	91	121	149	168	172	172	
22	53	80	106	132	152	160	160	
SSL	24	47	71	95	118	138	146	
	26	42	63	85	107	126	134	
	28	37	57	77	97	115	123	
	30	33	52	70	89	106	114	
	34	27	43	59	75	91	98	
	38	23	37	51	65	79	85	
	42	19	32	45	57	70	75	
	46	16	28	39	51	62	67	
	50	14	25	35	46	56	61	
	54	12	22	32	41	51	55	

Bemerkungen · Remarks · Remarques

1) mit Zentralballast 30 t
1) with 30 t central ballast
1) avec 30 t de lest central

* Unterflasche reicht nicht bis zum Boden.
* Hook block does not reach the ground.
* Le crochet ne descend pas jusqu'au sol.









Tragfähigkeiten Hauptausleger mit Superlift

Lifting capacities main boom with Superlift

Capacités de levage flèche principale avec Superlift

120 t¹⁾   7,25 m SL-Radius 13 m 360° DIN/ISO

66 m Hauptausleger · Main boom · Flèche principale								
Ausladung Radius Portée t								
	0	40	80	120	160	180	200	
m	t	t	t	t	t	t	t	
10	141	144	-	-	-	-	158	
12	132	144	151	-	-	-	158	
14	104	141	151	-	-	-	158	
16	85	124	151	156	-	-	158	
18	71	105	139	148	-	-	155	
20	61	91	120	142	149	-	149	
22	53	79	106	132	143	-	143	
24	46	70	94	118	137	138	138	
26	41	63	84	106	126	133	133	
SSL	28	37	57	76	96	115	123	
	30	33	51	70	88	106	114	
	34	27	43	59	75	91	98	
	38	22	36	51	65	79	85	
	42	19	31	44	57	69	75	
	46	16	27	39	50	62	67	
	50	13	24	34	45	55	60	
	54	11	21	31	40	50	55	
	58	9	19	28	37	46	50	

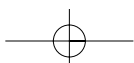
78 m Hauptausleger · Main boom · Flèche principale								
Ausladung Radius Portée t								
	0	40	80	120	160	180	200	
m	t	t	t	t	t	t	t	
10	107	-	-	-	-	-	118	
12	107	107	-	-	-	-	118	
14	105	107	-	-	-	-	118	
16	86	107	111	-	-	-	118	
18	73	106	111	-	-	-	118	
20	62	92	111	-	-	-	118	
22	54	81	107	113	-	-	118	
24	48	72	96	113	-	-	118	
26	43	64	86	108	117	-	117	
SSL/LSL	28	38	58	78	98	116	116	
	30	34	53	71	90	108	114	
	34	28	44	60	76	92	100	
	38	24	38	52	66	80	87	
	42	20	33	45	58	71	77	
	46	17	29	40	52	63	69	
	50	15	25	36	46	57	62	
	54	12	22	32	42	51	56	
	58	11	20	29	38	47	51	
	62	9	18	26	35	43	47	
	66	8	16	24	32	40	43	
	70	7	15	22	29	37	40	

72 m Hauptausleger · Main boom · Flèche principale								
m	0	40	80	120	160	180	200	t
	t	t	t	t	t	t	t	
10	121	124	-	-	-	-	141	
12	121	124	-	-	-	-	141	
14	104	124	131	-	-	-	141	
16	85	121	131	-	-	-	141	
18	71	105	131	134	-	-	141	
20	60	90	120	129	-	-	137	
22	52	79	105	123	133	-	133	
24	46	70	94	117	129	-	129	
SSL	26	41	62	84	106	125	125	
	28	36	56	76	96	115	121	
	30	32	51	69	88	106	113	
	34	26	42	58	74	90	97	
	38	22	36	50	64	78	85	
	42	18	31	43	56	69	75	
	46	15	27	38	50	61	67	
	50	12	23	34	44	55	60	
	54	10	20	30	40	49	54	
	58	8	18	27	36	45	49	
	62	7	16	24	33	41	45	

84 m Hauptausleger · Main boom · Flèche principale								
m	0	40	80	120	160	180	t	
	t	t	t	t	t	t		
12	89	91	-	-	-	100		
14	89	91	-	-	-	100		
16	86	91	-	-	-	100		
18	72	91	94	-	-	100		
20	62	91	94	-	-	100		
22	54	80	94	-	-	99		
24	47	71	94	96	-	99		
26	42	64	85	96	-	97		
SSL/LSL	28	38	58	77	93	-	95	
	30	34	52	71	89	-	92	
	34	28	44	60	76	84	84	
	38	23	37	51	66	75	75	
	42	20	32	45	58	68	68	
	46	17	28	40	51	61	61	
	50	14	25	35	46	55	55	
	54	12	22	31	41	50	50	
	58	10	19	28	37	45	45	
	62	8	17	26	34	41	41	
	66	7	15	23	31	37	37	
	70	6	14	21	29	33	33	
	74	5	12	20	26	29	29	

Bemerkungen · Remarks · Remarques

- 1) mit Zentralballast 30 t
 1) with 30 t central ballast
 1) avec 30 t de lest central







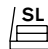

Tragfähigkeiten Hauptausleger mit Superlift

Lifting capacities main boom with Superlift

Capacités de levage flèche principale avec Superlift

120 t¹⁾   7,25 m SL-Radius 13 m 360°  DIN/ISO

90 m Hauptausleger · Main boom · Flèche principale							
Ausladung Radius							
Portée t	0	40	80	120	160	180	
m	t	t	t	t	t	t	t
12	77	-	-	-	-	-	86
14	76	78	-	-	-	-	86
16	76	78	-	-	-	-	85
18	72	78	-	-	-	-	84
20	62	78	79	-	-	-	84
22	54	78	79	-	-	-	83
24	47	71	79	-	-	-	83
26	42	64	79	-	-	-	82
28	38	57	77	80	-	-	81
30	34	52	71	79	-	-	80
34	28	44	60	76	-	-	76
SSL/LSL	38	23	37	51	65	71	71
	42	19	32	45	57	66	66
	46	16	28	39	51	60	60
	50	14	24	35	45	54	54
	54	12	22	31	41	47	47
	58	10	19	28	37	41	41
	62	8	17	25	34	36	36
	66	7	15	23	31	31	31
	70	6	13	21	27	27	27
	74	5	12	19	24	24	24
	78	4	11	18	23	23	23

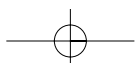
102 m Hauptausleger · Main boom · Flèche principale							
Ausladung Radius							
Portée t	0	40	80	120	160	200	
m	t	t	t	t	t	t	t
12	57	-	-	-	-	-	62
14	57	-	-	-	-	-	62
16	57	57	-	-	-	-	62
18	57	57	-	-	-	-	62
20	57	57	-	-	-	-	62
22	53	57	-	-	-	-	61
24	47	57	-	-	-	-	61
26	41	57	57	-	-	-	60
28	37	57	57	-	-	-	60
30	33	51	57	-	-	-	59
34	27	43	56	57	-	-	57
SSL/LSL	38	22	36	50	55	-	56
	42	18	31	44	53	-	54
	46	15	27	39	50	52	52
	50	13	24	34	45	50	50
	54	11	21	30	40	47	47
	58	9	18	27	36	44	44
	62	7	16	24	33	41	41
	66	6	14	22	30	38	38
	70	4	12	20	27	35	36
	74	3	11	18	25	32	33
	78	-	9	16	23	30	30
	82	-	8	15	21	28	28
	86	-	7	13	20	25	25
	90	-	6	12	18	23	23

96 m Hauptausleger · Main boom · Flèche principale								
		0	40	80	120	160	180	200
m		t	t	t	t	t	t	t
	12	66	-	-	-	-	-	70
	14	66	67	-	-	-	-	70
	16	66	67	-	-	-	-	69
	18	66	67	-	-	-	-	69
	20	61	66	-	-	-	-	68
	22	53	66	66	-	-	-	67
	24	47	65	65	-	-	-	66
	26	41	63	65	-	-	-	66
	28	37	57	64	-	-	-	65
	30	33	52	63	-	-	-	64
	34	27	43	59	61	-	-	62
	38	23	37	51	59	-	-	60
SSL/LSL	42	19	32	44	56	-	-	57
	46	16	27	39	50	55	-	55
	50	13	24	34	45	52	52	52
	54	11	21	31	40	49	49	49
	58	9	19	28	36	45	47	47
	62	7	16	25	33	41	44	44
	66	6	14	22	30	38	41	41
	70	5	13	20	28	35	38	38
	74	4	11	18	25	32	35	35
	78	3	10	17	23	30	32	32
	82	-	9	15	22	28	29	29

108 m Hauptausleger · Main boom · Flèche principale							
		0	40	80	120	180	
m		t	t	t	t	t	t
	14	43	-	-	-	-	47
	16	42	-	-	-	-	46
	18	42	43	-	-	-	45
	20	41	42	-	-	-	44
	22	40	41	-	-	-	42
	24	39	39	-	-	-	41
	26	37	38	-	-	-	39
	28	36	36	-	-	-	37
	30	32	35	-	-	-	35
	34	26	32	32	-	-	32
	38	21	29	29	-	-	29
	42	18	27	27	-	-	27
SSL/LSL	46	14	25	25	-	-	25
	50	12	23	24	-	-	24
	54	10	20	22	-	-	22
	58	8	17	21	21	-	21
	62	6	15	20	20	-	20
	66	5	13	19	19	-	20
	70	4	11	18	19	-	19
	74	3	10	17	18	-	18
	78	-	9	16	17	-	18
	82	-	7	14	17	-	17
	86	-	6	13	16	-	17
	90	-	5	11	16	-	16
	94	-	5	10	15	-	15

Bemerkungen · Remarks · Remarques

- 1) mit Zentralballast 30 t
 1) with 30 t central ballast
 1) avec 30 t de lest central





Tragfähigkeiten Hauptausleger mit Superlift Lifting capacities main boom with Superlift Capacités de levage flèche principale avec Superlift

90 t



7,25 m

SL-Radius 13 m

360°

DIN/ISO

30 m Hauptausleger · Main boom · Flèche principale									
Ausladung Radius									
Portée	t	0	40	80	120	160	180	200	
m	t	t	t	t	t	t	t	t	
6	173	281	-	-	-	-	-	300	
7	166	281	-	-	-	-	-	300	
8	161	279	300	-	-	-	-	300	
9	156	249	289	-	-	-	-	300	
10	135	212	261	289	-	-	-	291	
12	101	159	217	248	-	-	-	274	
14	80	127	173	213	239	-	-	253	
SSL 16	65	105	144	183	209	221	-	221	
18	55	89	123	156	186	196	-	196	
20	47	77	107	136	166	176	-	176	
22	41	68	94	121	147	160	-	160	
24	37	60	84	108	132	144	-	144	
26	33	54	76	98	119	130	-	130	
28	29	49	69	89	109	116	-	116	

48 m Hauptausleger · Main boom · Flèche principale									
Ausladung Radius									
Portée	t	0	40	80	120	160	180	200	
m	t	t	t	t	t	t	t	t	
8	200	232*	-	-	-	-	-	242*	
9	161	232*	242*	-	-	-	-	242*	
10	134	210	242*	-	-	-	-	242*	
12	99	157	215	242*	-	-	-	242*	
14	78	124	171	210	236*	-	-	242*	
16	63	102	142	181	206	218	-	218	
18	53	87	120	154	182	193	-	193	
SSL 20	45	75	104	134	164	173	-	173	
22	39	65	92	118	145	156	-	156	
24	34	58	82	105	129	141	-	141	
26	30	52	73	95	117	128	-	128	
28	27	47	66	86	106	116	-	116	
30	24	42	61	79	97	107	-	107	
34	19	35	51	67	83	91	-	91	
38	16	30	44	58	72	80	-	80	
42	13	26	39	51	64	70	-	70	

36 m Hauptausleger · Main boom · Flèche principale									
Ausladung Radius									
Portée	t	0	40	80	120	160	180	200	
m	t	t	t	t	t	t	t	t	
7	186	288	-	-	-	-	-	288	
8	180	278	288	-	-	-	-	288	
9	162	248	288	-	-	-	-	288	
10	135	211	260	288	-	-	-	288	
12	100	158	216	247	278	-	-	280	
14	79	126	172	212	238	-	-	251	
SSL 16	65	104	143	182	208	220	-	220	
18	54	88	122	155	184	195	-	195	
20	46	76	106	135	165	175	-	175	
22	40	67	93	120	146	158	-	158	
24	35	59	83	107	131	143	-	143	
26	32	53	75	97	118	129	-	129	
28	28	48	68	88	108	118	-	118	
30	25	44	62	81	99	108	-	108	

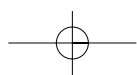
54 m Hauptausleger · Main boom · Flèche principale									
Ausladung Radius									
Portée	t	0	40	80	120	160	180	200	
m	t	t	t	t	t	t	t	t	
9	160	200	-	-	-	-	-	218*	
10	133	196	209*	-	-	-	-	218*	
12	98	156	209*	213*	-	-	-	213*	
14	77	124	171	209*	-	-	-	203*	
16	63	102	141	180	194	-	-	194	
18	52	86	120	153	182	-	-	185	
SSL 20	44	74	104	133	163	172	-	172	
22	38	65	91	117	144	155	-	155	
24	33	57	81	105	129	140	-	140	
26	29	51	73	94	116	127	-	127	
28	26	46	66	86	106	115	-	115	
30	23	42	60	78	97	106	-	106	
34	19	35	51	67	82	90	-	90	
38	15	29	43	58	72	79	-	79	
42	12	25	38	50	63	69	-	69	
46	10	22	33	45	56	62	-	62	

42 m Hauptausleger · Main boom · Flèche principale									
Ausladung Radius									
Portée	t	0	40	80	120	160	180	200	
m	t	t	t	t	t	t	t	t	
7	201	250	-	-	-	-	-	279*	
8	195	250	274*	-	-	-	-	279*	
9	161	247	274*	-	-	-	-	279*	
10	134	210	259*	274*	-	-	-	279*	
12	99	157	215	246	277*	-	-	279*	
14	78	125	172	211	237	-	-	250	
SSL 16	64	103	142	181	207	219	-	219	
18	53	87	121	155	183	194	-	194	
20	46	75	105	135	164	174	-	174	
22	40	66	92	119	145	157	-	157	
24	35	58	82	106	130	142	-	142	
26	31	52	74	96	117	128	-	128	
28	27	47	67	87	107	117	-	117	
30	25	43	61	80	98	107	-	107	
34	20	36	52	68	84	92	-	92	
38	17	31	45	59	73	80	-	80	

60 m Hauptausleger · Main boom · Flèche principale									
Ausladung Radius									
Portée	t	0	40	80	120	160	180	200	
m	t	t	t	t	t	t	t	t	
9	159	169	-	-	-	-	-	201*	
10	133	169	-	-	-	-	-	201*	
12	98	156	181*	-	-	-	-	201*	
14	77	123	170	184*	-	-	-	201*	
16	62	101	141	180*	-	-	-	191*	
18	52	85	119	153	181*	-	-	181*	
SSL 20	44	73	103	133	162	171	-	171	
22	38	64	91	117	143	155	-	155	
24	33	57	80	104	128	140	-	140	
26	29	50	72	94	115	126	-	126	
28	25	45	65	85	105	115	-	115	
30	23	41	59	78	96	105	-	105	
34	18	34	50	66	82	90	-	90	
38	14	29	43	57	71	78	-	78	
42	11	24	37	50	62	69	-	69	
46	9	21	33	44	55	61	-	61	
50	7	18	29	39	50	55	-	55	
54	6	16	26	36	45	50	-	50	

Bemerkungen · Remarks · Remarques

- * Unterflasche reicht nicht bis zum Boden.
- * Hook block does not reach the ground.
- * Le crochet ne descend pas jusqu'au sol.







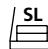

Tragfähigkeiten Hauptausleger mit Superlift

Lifting capacities main boom with Superlift

Capacités de levage flèche principale avec Superlift

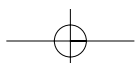
90 t   7,25 m SL-Radius 13 m 360° **DIN/ISO**

66 m Hauptausleger · Main boom · Flèche principale								
Ausladung Radius								
Portée t	0	40	80	120	160	180	200	
m	t	t	t	t	t	t	t	t
10	132	144	-	-	-	-	-	158
12	98	144	151	-	-	-	-	158
14	76	123	151	-	-	-	-	158
16	62	101	140	156	-	-	-	158
18	51	85	119	148	-	-	-	155
20	43	73	103	132	149	-	-	149
22	37	64	90	116	143	-	-	143
24	32	56	80	104	128	138	-	138
26	28	50	72	93	115	126	-	126
SSL	28	25	45	65	85	104	114	114
	30	22	40	59	77	96	105	105
	34	17	33	49	65	81	89	89
	38	14	28	42	56	70	77	77
	42	11	24	37	49	62	68	68
	46	8	20	32	43	55	61	61
	50	6	18	28	39	49	54	54
	54	5	15	25	35	44	49	49
	58	4	13	23	31	40	45	45

78 m Hauptausleger · Main boom · Flèche principale								
Ausladung Radius								
Portée t	0	40	80	120	160	180	200	
m	t	t	t	t	t	t	t	t
10	107	-	-	-	-	-	-	118
12	98	107	-	-	-	-	-	118
14	77	107	-	-	-	-	-	118
16	63	102	111	-	-	-	-	118
18	53	86	111	-	-	-	-	118
20	45	74	104	-	-	-	-	118
22	39	65	91	113	-	-	-	118
24	34	58	81	105	-	-	-	118
26	30	51	73	95	116	-	-	117
SSL/LSL	28	26	46	66	86	106	116	116
	30	23	42	60	79	97	106	106
	34	19	35	51	67	83	91	91
	38	15	30	44	58	72	79	79
	42	12	25	38	51	63	70	70
	46	10	22	33	45	56	62	62
	50	8	19	29	40	50	56	56
	54	6	17	26	36	46	50	50
	58	5	15	24	33	41	46	46
	62	4	13	21	30	38	42	42
	66	3	11	19	27	35	39	39
	70	-	10	18	25	32	36	36

72 m Hauptausleger · Main boom · Flèche principale								
		0	40	80	120	160	180	200
m	t	t	t	t	t	t	t	t
10	121	124	-	-	-	-	-	141
12	97	124	-	-	-	-	-	141
14	76	122	131	-	-	-	-	141
16	61	100	131	-	-	-	-	141
18	51	85	118	134	-	-	-	141
20	43	73	102	129	-	-	-	137
22	37	63	90	116	133	-	-	133
24	32	56	79	103	127	-	-	129
SSL	26	28	49	71	93	114	125	125
	28	24	44	64	84	104	114	114
	30	21	40	58	77	95	104	104
	34	17	33	49	65	81	89	89
	38	13	27	42	56	70	77	77
	42	10	23	36	49	61	67	67
	46	8	20	31	43	54	60	60
	50	6	17	28	38	48	54	54
	54	4	14	24	34	44	48	48
	58	3	12	22	31	40	44	44
	62	-	11	19	28	36	40	40

84 m Hauptausleger · Main boom · Flèche principale								
		0	40	80	120	160	180	200
m	t	t	t	t	t	t	t	t
12	89	91	-	-	-	-	-	100
14	76	91	-	-	-	-	-	100
16	63	91	-	-	-	-	-	100
18	52	86	94	-	-	-	-	100
20	44	74	94	-	-	-	-	100
22	38	65	91	-	-	-	-	99
24	33	57	81	96	-	-	-	99
26	29	51	73	94	-	-	-	97
SSL/LSL	28	26	46	66	86	-	-	95
	30	23	41	60	78	-	-	92
	34	18	34	50	66	82	-	84
	38	15	29	43	57	71	-	75
	42	12	25	37	50	63	68	68
	46	9	21	33	44	56	61	61
	50	7	18	29	39	50	55	55
	54	6	16	26	35	45	50	50
	58	4	14	23	32	41	45	45
	62	3	12	21	29	37	41	41
	66	-	10	19	26	34	37	37
	70	-	9	17	24	32	33	33
	74	-	8	15	22	29	29	29









Tragfähigkeiten Hauptausleger mit Superlift

Lifting capacities main boom with Superlift

Capacités de levage flèche principale avec Superlift

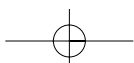
90 t   7,25 m SL-Radius 13 m 360° DIN/ISO

90 m Hauptausleger · Main boom · Flèche principale								
Ausladung Radius Portée								
	t	0	40	80	120	160	180	
m	t	t	t	t	t	t	t	t
12	77	-	-	-	-	-	-	86
14	74	78	-	-	-	-	-	86
16	61	78	-	-	-	-	-	85
18	52	78	-	-	-	-	-	84
20	44	74	79	-	-	-	-	84
22	38	64	79	-	-	-	-	83
24	33	57	79	-	-	-	-	83
26	29	51	72	-	-	-	-	82
28	26	46	65	80	-	-	-	81
30	23	41	60	78	-	-	-	80
34	18	34	50	66	-	-	-	76
SSL/LSL	38	14	29	43	57	71	-	71
	42	11	25	37	50	62	-	66
	46	9	21	33	44	55	60	60
	50	7	18	29	39	50	54	54
	54	5	16	25	35	45	47	47
	58	4	14	23	32	41	-	41
	62	3	12	20	29	36	-	36
	66	-	10	18	26	31	-	31
	70	-	9	16	24	27	-	27
	74	-	8	15	22	24	-	24
	78	-	6	13	20	23	-	23

102 m Hauptausleger · Main boom · Flèche principale								
Ausladung Radius Portée								
	t	0	40	80	120	160	180	
m	t	t	t	t	t	t	t	t
12	57	-	-	-	-	-	-	62
14	57	-	-	-	-	-	-	62
16	57	57	-	-	-	-	-	62
18	49	57	-	-	-	-	-	62
20	41	57	-	-	-	-	-	62
22	36	57	-	-	-	-	-	61
24	31	56	-	-	-	-	-	61
26	27	50	57	-	-	-	-	60
28	24	45	57	-	-	-	-	60
30	21	40	57	-	-	-	-	59
34	17	33	49	57	-	-	-	57
SSL/LSL	38	13	28	42	55	-	-	56
	42	10	24	36	49	-	-	54
	46	8	20	32	43	52	-	52
	50	6	17	28	38	49	-	50
	54	4	15	25	34	44	47	47
	58	3	13	22	31	40	44	44
	62	-	11	19	28	36	40	40
	66	-	9	17	25	33	37	37
	70	-	8	15	23	30	34	34
	74	-	6	14	21	28	31	31
	78	-	5	12	19	26	29	29
	82	-	4	11	18	24	27	27
	86	-	3	10	16	22	25	25
	90	-	3	9	15	21	23	23

96 m Hauptausleger · Main boom · Flèche principale								
m	t							200
	0	40	80	120	160	180	t	
12	66	-	-	-	-	-	-	70
14	66	67	-	-	-	-	-	70
16	60	67	-	-	-	-	-	69
18	50	67	-	-	-	-	-	69
20	43	66	-	-	-	-	-	68
22	37	64	66	-	-	-	-	67
24	32	56	65	-	-	-	-	66
26	28	50	65	-	-	-	-	66
28	25	45	64	-	-	-	-	65
30	22	41	59	-	-	-	-	64
SSL/LSL	34	17	34	50	61	-	-	62
	38	14	28	42	57	-	-	60
	42	11	24	37	49	-	-	57
	46	8	21	32	43	55	-	55
	50	6	18	28	39	49	52	52
	54	5	15	25	35	44	49	49
	58	3	13	22	31	40	45	45
	62	-	11	20	28	36	41	41
	66	-	9	18	26	33	37	37
	70	-	8	16	23	31	34	34
	74	-	7	14	21	28	32	32
	78	-	6	13	20	26	29	29
	82	-	5	11	18	24	27	27

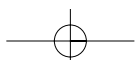
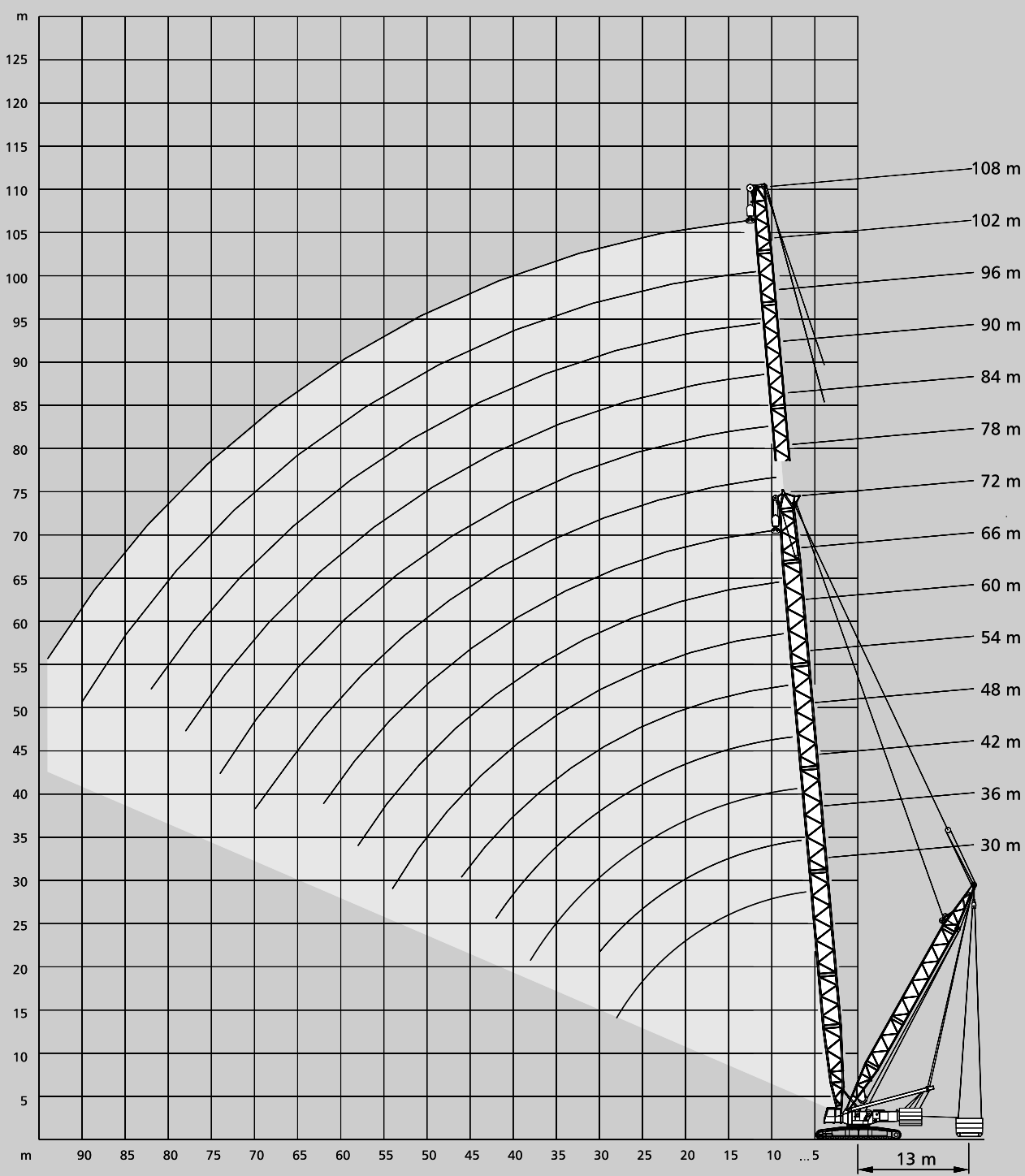
108 m Hauptausleger · Main boom · Flèche principale								
m	t							180
	0	40	80	120	160	t		
14	43	-	-	-	-	-	-	47
16	42	-	-	-	-	-	-	46
18	42	43	-	-	-	-	-	45
20	40	42	-	-	-	-	-	44
22	34	41	-	-	-	-	-	42
24	29	39	-	-	-	-	-	41
26	26	38	-	-	-	-	-	39
28	22	36	-	-	-	-	-	37
30	20	35	-	-	-	-	-	35
34	15	32	32	-	-	-	-	32
SSL/LSL	38	12	27	29	-	-	-	29
	42	9	23	27	-	-	-	27
	46	7	19	25	-	-	-	25
	50	5	16	24	-	-	-	24
	54	3	14	22	-	-	-	22
	58	-	12	21	21	-	-	21
	62	-	10	19	20	-	-	20
	66	-	8	16	19	-	-	20
	70	-	7	15	19	-	-	19
	74	-	6	13	18	-	-	18
	78	-	4	11	17	-	-	18
	82	-	3	10	17	17	-	17
	86	-	3	9	15	17	-	17
	90	-	-	8	14	16	-	16
	94	-	-	7	13	15	-	15





Arbeitsbereiche Hauptausleger mit Superlift Working ranges main boom with Superlift Portées flèche principale avec Superlift

SSL, SSL/LSL





Anmerkungen zu den Tragfähigkeiten

Notes to lifting capacity

Conditions d'utilisation

Tragfähigkeiten entsprechen ISO 4305 und DIN 15019.2 (Prüflast = 1,25 x Hublast + 0,1 x Auslegereigengewicht, auf die Ausleger-
spitze reduziert).

Das Gewicht der Unterflaschen sowie die Aufnahmemittel sind Bestandteile der Last und sind von den Tragfähigkeiten abzuziehen.

Kranbetrieb zulässig bis:

Staudruck 60 N/m²

Windgeschwindigkeit 9,8 m/s

Weitere Angaben sind der Bedienungsanleitung des Kranes zu entnehmen.

Anmerkung: Die Daten dieser Broschüre dienen nur zur allgemeinen Information; für ihre Richtigkeit übernehmen wir keine Haftung.
Der Betrieb des Kranes ist nur mit den Original-Tragfähigkeitstabellen und mit der Bedienungsanleitung zulässig, die mit dem Kran
mitgeliefert werden.

Ratings are in compliance with ISO 4305 and DIN 15019.2 (test load = 1.25 x suspended load + 0.1 x dead weight of boom, reduced
to boom point).

Weight of hook blocks and slings is part of the load, and is to be deducted from the capacity ratings.

Crane operation is permissible up to a

wind pressure of 60 N/m²

wind speed of 9.8 m/s

Consult operation manual for further details.

Note: Data published herein is intended as a guide only and shall not be construed to warrant applicability for lifting purposes.
Crane operation is subject to the computer charts and operation manual both supplied with the crane.

Le tableau de charges est conforme à la norme ISO 4305 et DIN 15019.2 (charge d'essai = 1,25 x charge suspendue + 0,1 x poids mort
de la flèche, réduit à la pointe de flèche).

Les poids du crochet-moufle et de tous les accessoires d'élingage font partie de la charge et sont à déduire des charges indiquées.

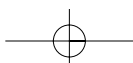
La grue peut travailler jusqu'à une

pression du vent de 60 N/m²

vitesse du vent de 9,8 m/s

Pour plus de détails consulter la notice d'utilisation de la grue.

Nota: Les renseignements ci-inclus sont donnés à titre indicatif et ne représentent aucune garantie d'utilisation pour les opérations
de levage. La mise en service de la grue n'est autorisée qu'à condition que les tableaux de charges ainsi que le manuel de service,
tels que fournis avec la grue, soient observés.





Technical description

Crawler carrier

3-section carrier comprising of carbody and 2 crawler side frames, pin-connected hydraulically to facilitate removal of crawlers for transportation.
Track width 7.25 m.

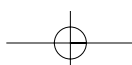
- Carbody:** Bending- and torsion-resistant welded structure of cellular design, made from high-strength fine grain structural steel.
- Crawlers:** Side frames: bending-resistant welded structure fabricated of high-strength fine grain structural steel. Crawler shoes, idler wheels and drive sprockets made from high-strength cast steel. 14 track rollers per side frame with hardened rolling surfaces. Centralized lubrication.
- Drive:** Each crawler powered by one hydraulic motor through closed planetary gear unit running in oil. Crawlers provide independent infinitely variable control and counter-rotation capability.

Superstructure

- Frame:** Torsion-resistant welded structure made from high-strength fine grain structural steel. Connected to carrier by triple-row roller bearing slew ring.
- Drive:** Mercedes-Benz diesel engine, type OM 441 LA, 250 kW (340 hp) at 2100 ¹/min to DIN 70020, water-cooled. Pump distribution gearbox with 3 variable displacement axial piston pumps through-drive for one double and single gear pump.
- Rope drums:** 2 rope drums are standard – hoist 1 with variable displacement hydraulic motor and boom hoist. The drums are driven by hydraulic motors through closed planetary gear units running in oil bath. Spring-applied, hydraulically released multi-disk brakes for all rope drums and wear-free hydraulic braking for load lowering.
- Slew system:** Powered by hydraulic motor through closed planetary gear unit running in oil bath. Spring-applied, hydraulically released holding brake and wear-free hydraulic braking.
- Control:** Electronic proportional valve pilot control.
- Cab:** Steel cab with safety glazing, self-contained heater, controls and instrumentation for travel and crane movements. The cab can be tilted back for improved view, and is swung in front of the superstructure for transportation.

Optional equipment

- Track shoes:** Optional width 1.2 m
- Hoist 2**
- Additional counterweight:** Consisting of 30 t (2 x 15 t) counterweight and 30 t (2 x 15 t) central ballast.
- Self-assembly of basic machine**
- Counterweight carrier:** Drive 4 x 4, total weight max. 200 t.





Technical description

Boom combinations S, S/L and L

Lattice-type tubular chord structure fabricated of high-strength fine grain structural steel with quick-disconnect pinning.

SH:	Main boom: foot section 10.5 m (used to install winch W1), inserts 6 m and 12 m, tapered insert 6 m, boom head 1.5 m. Main boom lengths: 18-72 m.
SH/LH (SGL 70.5 m):	Main boom: same as max. SH, extended by inserts 6 m and 12 m (type 2116), boom top section 7.5 m. Main boom lengths: 78-90 m.
SH/LH (SGL 46.5 m):	Main boom: foot section 10.5 m (used to install winch W1), inserts 6 m and 12 m, tapered insert 6 m, extended by inserts 6 m and 12 m (type 2116), boom top section 7.5 m. Main boom lengths: 54-96 m.
SW:	Main boom: foot section 10.5 m (used to install winch W1), inserts 6 m and 12 m, tapered insert 6 m, boom head 1.5 m. Fly jib: foot section 4.5 m, inserts 6 m and 12 m, jib top section 7.5 m. Main boom lengths: 24-60 m. Fly jib lengths: 18-66 m.
LF:	Main boom S: same as SH. Main boom S/L (SGL 46.5 m): same as SH/LH (SGL 46.5 m). Fly jib L: foot section 6 m, inserts 12 m, jib top section 6 m. Main boom lengths: 30-72 m for S version. Main boom lengths: 54-84 m for S/L version (SGL 46.5 m). Fly jib lengths: 12-36 m.
SSL:	Main boom: foot section 10.5 m (used to install winch W1), inserts 6 m and 12 m, tapered insert 6 m, boom head 1.5 m. Mast 30 m, Superlift counterweight 40-160 t. Additional winch W2 required on mast. Main boom lengths: 30-72 m.
SSL/LSL (SGL 70.5 m):	Main boom: same as max. SSL, extended by inserts 6 m and 12 m (type 2116), boom top section 7.5 m. Mast 30 m, Superlift counterweight 40-160 t. Additional winch W2 required on mast. Main boom lengths: 78-108 m.
SWSL:	Main boom: same as SSL. Fly jib: foot section 4.5 m, inserts 6 m and 12 m, boom top section 7.5 m. Mast 30 m, Superlift counterweight 40-60 t. Additional winches W1 and W2 required on mast and main boom. Main boom lengths: 30-72 m. Fly jib lengths: 18-66 m.
Safety devices:	Electronic safe load indicator, hoist limit switch, limit switches for boom movements, hydraulic boom backstops, aircraft warning light, anemometer.

The Superlift counterweight is not included in our scope of supply.

