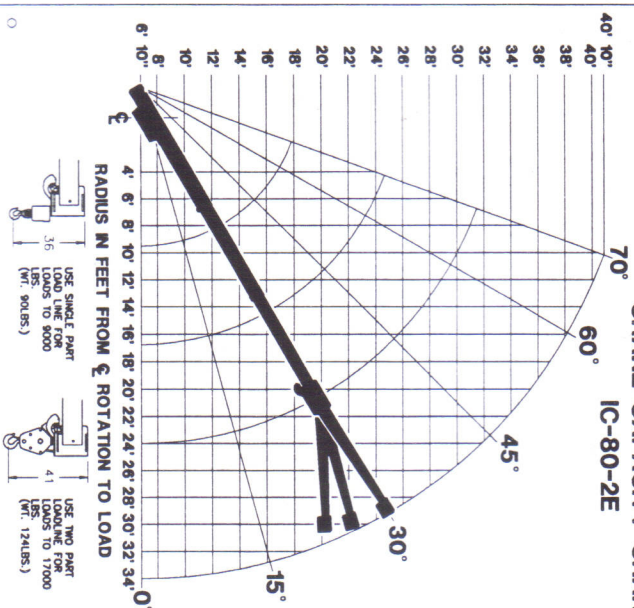




# CRANE CAPACITY CHART IC-80-2E



CAPACITIES APPLY TO OPERATION ON FIRM LEVEL SURFACE			
LOAD RADIUS	MAIN BOOM OR EXTENSION CAPACITIES IN POUNDS		OVER FRONT
	360° ROTATION	ON RUBBER	ON OUTRIGGERS
5	9500	17000	11600
6	7800	14500	10200
8	5500	10250	8250
10	3900	7700	6200
12	2900	6550	4550
14	2300	5550	3550
16	1850	4550	2850
18	1550	3950	2400
20	1300	3250	2050
22	1100	2875	1750
24	925	2475	1550
26	850	2250	1350
28	700	2000	1175
30	600	1775	1025
32	500	1625	900
34	425	1400	800
10-FOOT BOOM EXTENSION - STRAIGHT ON OFFSET			
MAIN BOOM ANGLE			
0°	2250	3200	5000
15°	2400	2700	3500
30°	2250	2500	3000

\* USE 0° FOR STRAIGHT BOOM EXTENSION  
† USE 0°, 15° OR 30° FOR OFFSET BOOM EXTENSION  
BOOM EXTENSION LOADS MUST NOT EXCEED MAIN BOOM CAPACITY

CARRY DECK CAPACITY 14000 LBS.  
(LOAD CENTERED OVER AXLE AT CREEP SPEED)

PERSONNEL, BUCKET CAPACITY, OUTRIGGERS EXTENDED - 300 LBS. PER  
BUCKET - 600 LBS. TOTAL. THE BOOMS ON THIS UNIT ARE ALL STEEL  
AND HAVE NO LINE VOLTAGE RATING. MAXIMUM HYDRAULIC PRESSURE  
5000 PSI.  
DEDUCT 100 LBS. FROM ALL CAPACITIES WHEN BOOM EXTENSION  
IS STOWED ON BASE BOOM.

ALL CAPACITIES APPLY TO OPERATION ON FIRM LEVEL SURFACES.

## OPERATION:

1. READ AND UNDERSTAND OWNERS MANUAL BEFORE OPERATING THIS CRANE.
  2. CHECK LEVEL OF HYDRAULIC OIL DAILY.
  3. CHECK UNIT FOR VISIBLE DEFECTS AND LOOSE PARTS.
  4. START ENGINE.
  5. SET VEHICLE PARK BRAKE SECURELY.
  6. EXTEND OUTRIGGERS TO SOLID FOOTING.
  7. OPERATE ALL HYDRAULIC CONTROLS SLOWLY AND DELIBERATELY FOR SMOOTH  
MOTION.
- THE LOAD HOIST LINE ON THIS UNIT MUST BE 9/16" DIA. 6 X 37-WIRE-TIP WIRE  
ROPE WITH A MINIMUM BREAKING STRENGTH OF 11,500 LBS. (11,500 PSI TENSILE  
STRENGTH). THE PRESSURE 1000 X 15 (110 PSI) BELTED - 135 PSI (RADIAL).  
CAPACITIES ON OUTRIGGERS ARE 25% OF TIPPING LOADS. CAPACITIES ON RUBBER ARE 75%.  
CAPACITIES BELOW BOLD LINE ARE LIMITED BY TIPPING. OTHER CAPACITIES ARE LIMITED BY  
STRUCTURAL OR HYDRAULIC CAPABILITY.

MODEL NO. IC-80-2E

SERIAL NO. [REDACTED]

BRODERSON MANUFACTURING CORP.  
LENEXA, KANSAS