



**bmc**  
*Tech Spec*

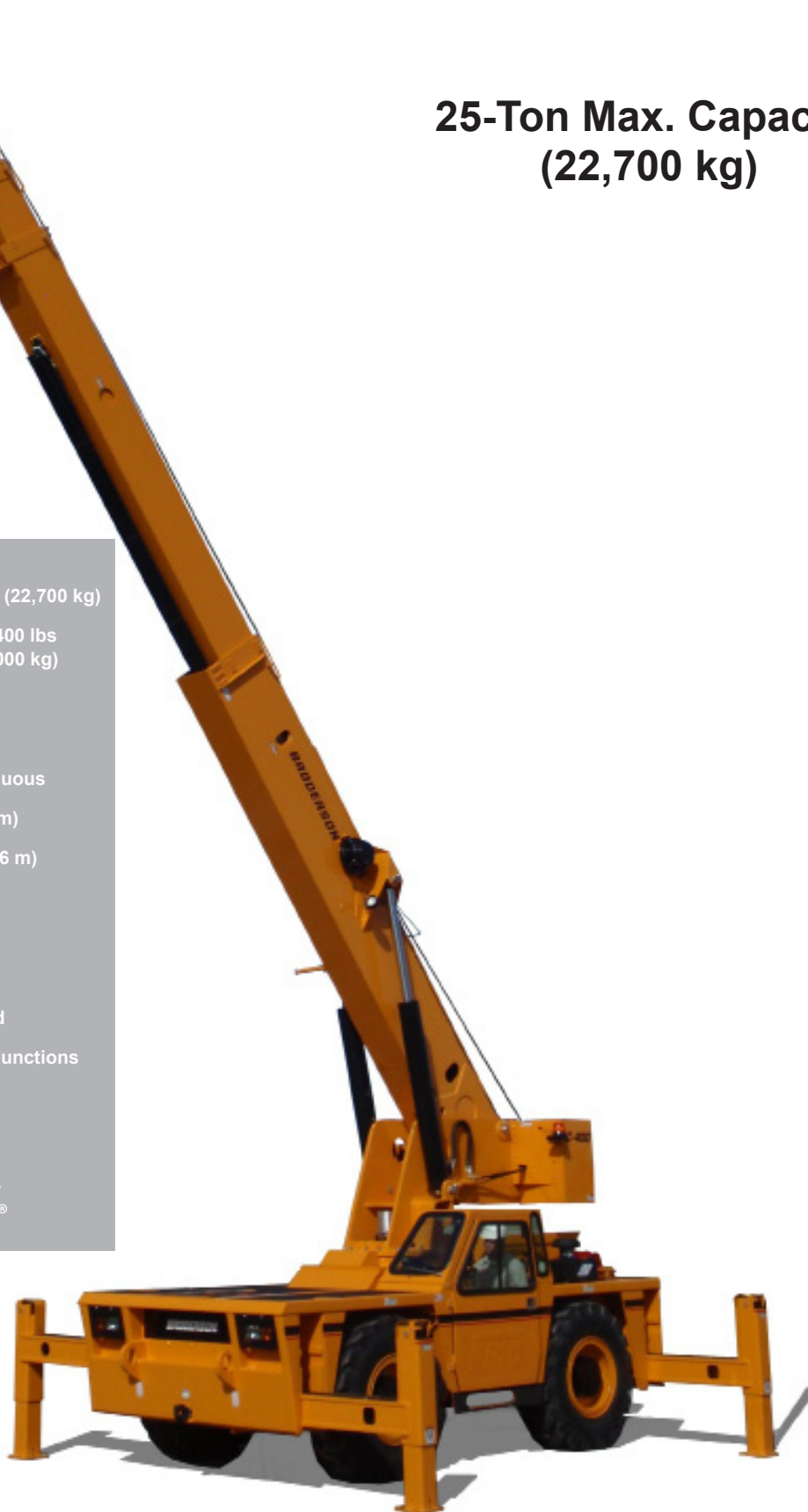
# **IC-400-3A**

**Industrial Crane**

**25-Ton Max. Capacity**  
**(22,700 kg)**

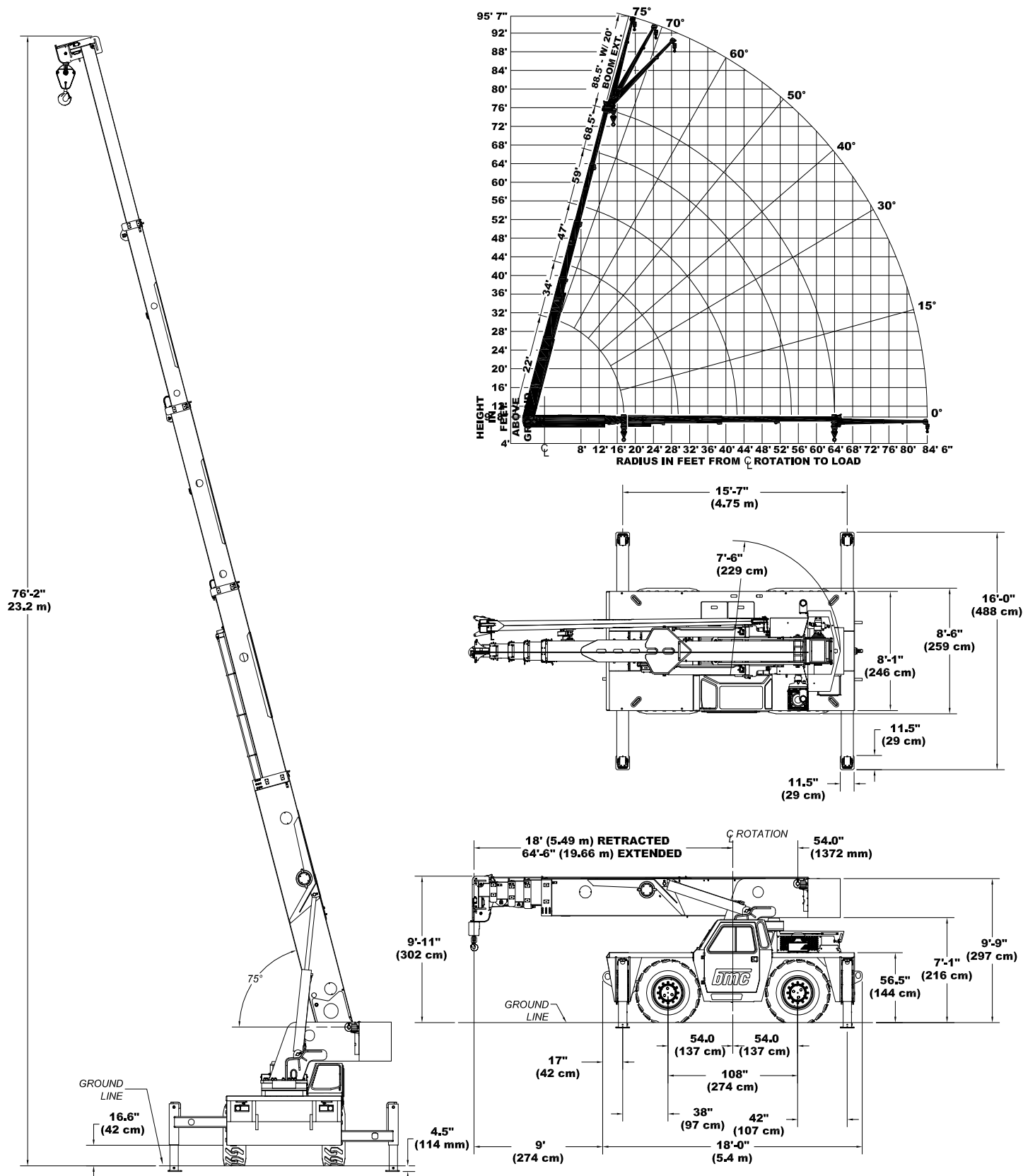
- Rated Capacity Limiter ... Standard
- Capacity on Outriggers ... 50,000 lbs (22,700 kg)
- Pick and Carry Capacity ... up to 24,400 lbs (11,000 kg)
- Height ... 9' 11" (2.96 m)
- Width ... 8' 6" (2.59 m)
- Boom Rotation ... 360 Degree Continuous
- Sheave Height ... up to 95' 0" (28.96 m)
- Horizontal Reach ... up to 84' 6" (25.76 m)
- Tight Turning Radius
- 4-Wheel Steer ... Standard
- 4-Wheel Drive ... Standard
- Powershift Transmission ... Standard
- Electro-Hydraulic Control of Crane Functions
- Independent Outrigger Controls
- Diesel Engine ... Standard

**BRODERSON**  
**Manufacturing Corp.**





# IC-400-3A





# IC-400-3A

## Specifications

**GENERAL:**

|                        |                         |                  |                  |
|------------------------|-------------------------|------------------|------------------|
| <b>Boom Movement:</b>  | <b>Rotation</b>         | <b>Elevation</b> | <b>Extension</b> |
|                        | Continuous              | 0° to 75°        | 46' 6" (14.17m)  |
| <b>Boom Speeds:</b>    | 0.7 RPM                 | 30 sec.          | 56 sec.          |
| <b>Weight:</b>         |                         |                  |                  |
| Total                  | 54,900 lbs. (24,900kg)  |                  |                  |
| Front Axle             | 29,400 lbs. (13,330kg)  |                  |                  |
| Rear Axle              | 25,500 lbs. (11,570 kg) |                  |                  |
| <b>Gradeability:</b>   | 70% (34°)               |                  |                  |
| <b>Turning Radius:</b> | 15 Ft. 10 in. (4.83m)   |                  |                  |

**ENGINE:**

|                           |  |
|---------------------------|--|
| <b>Make</b>               | <u>Cummins</u>                         |
| <b>Model</b>              | QSB4.5 (US EPA Tier 3)                 |
| <b>Type</b>               | Turbocharged-Diesel, charge air cooled |
| <b>No. Cyl.</b>           | 4                                      |
| <b>Displacement</b>       | 4.5L                                   |
| <b>HP @ Gov. Speed</b>    | 160 H.P.                               |
| <b>Fuel Tank Capacity</b> | 50 Gallons                             |

**TRANSMISSION:**

Powershift transmission with 6-speeds forward & 3-reverse. Provides power shifts at any engine speed in any gear. All shifting is done with a single lever electrical control. Equipped with torque converter & transmission oil cooler. Torque converter has stall ratio of 2.640:1.

Forward gear ratios & speeds:      Reverse gear ratios & speeds:

| Gear | Ratio | Speed (MPH)    | Gear | Ratio | Speed (MPH)     |
|------|-------|----------------|------|-------|-----------------|
| 1st  | 8.20  | 2.7 (4.3km/h)  | 1st  | 8.20  | 2.7 (4.3km/h)   |
| 2nd  | 4.64  | 4.8 (7.7km/h)  | 2nd  | 3.53  | 6.3 (10.1km/h)  |
| 3rd  | 3.53  | 6.3 (10.1km/h) | 3rd  | 1.41  | 15.8 (25.4km/h) |
| 4th  | 2.00  | 11.2 (18 km/h) |      |       |                 |
| 5th  | 1.41  | 15.8 (25 km/h) |      |       |                 |
| 6th  | 0.80  | 23.0 (37 km/h) |      |       |                 |

**AXLES:****Front Axle:**

Planetary drive/steer front axle with 16:42 to 1.0 ratio. Differential equipped with "limited slip" feature. Front axle mounted rigidly to frame.

**Rear Axle:**

Planetary drive/steer axle with 16.42 to 1.0 ratio. Rear axle mounted with rubber elements to allow oscillation.

**STEERING:**

Hydraulic steering unit with two cylinders attached to each axle. Allows limited steering when engine is not running. A switch on the control panel is used to select rear-wheel steering, 4-wheel steering or crab steering. Electronic sensors and control box automatically align the steering after a new mode is selected.

**BRAKES:**

|                 |  |
|-----------------|--|
| <b>Service:</b> | 4-wheel hydraulic disc-type brakes   |
| <b>Parking:</b> | Spring-applied & hydraulically released disc-type parking brake on transmission. |

**TIRES:**

17.5 x 25, 20-ply rating, mud lug.

**CHASSIS:****CARGO DECK:**

74 sq. ft.(6.94m<sup>2</sup>) of deck area. 20,000 lbs. (91,000kg) capacity on deck when load is centered over or between axles.

**Headlight & Taillight Grilles:**

Steel protective grilles for headlights & taillights. Easily removable for replacing bulbs.

**OUTRIGGERS:**

Four hydraulic out & down outriggers of box beam construction with direct-connected holding valves. Independent controls for each outrigger. Outrigger pad dimension 11.5" (29cm) x 11.5" (29cm).

**ACCESSORY STORAGE BOXES:**

One side deck compartment & one front deck compartment, each box has hinged lockable cover.

**Lifting Rings**

Lifting rings at each corner of cargo deck so sling can be attached for lifting crane.

**OPERATOR COMPARTMENT:**

Provides one-position access to all chassis & crane functions. Includes adjustable operator's seat, retracting seat belts, fire extinguisher, electronic level gauge & tilt steering wheel.

**Drum Rotation Indicator:**

An indicator lamp on engine display unit flashes as hoist drum rotates.

**All Weather Cab:**

Consists of rigid mounted canopy section and removable hinged door with safety glass. Rugged canopy structure with laminated glass front & top. Door is equipped with a keyed lock to protect operator's station. Includes defroster fan, dome light, heater with 2-speed fan & 12V electric windshield wiper and windshield washer.

**Air Conditioning:**

Provides factory system R134a refrigerant.

**Electronic Controls:**

Dual two-axis joysticks provide control of boom motions and hoist.

**ELECTRICAL:****12 Volt System****Lighting Package:**

One pair headlights with high & low beams; tail, brake & turn signal lights & back-up lights in rear; turn signals & emergency flasher switch at operator's station.

**Instrument Package:**

Located on the dashboard at the operator's station is the key pad for outrigger operation, an engine display unit, rocker switches for various functions, and indicator lights. Included with the engine display are simulated gages displaying real-time values for engine RPM, battery voltage, engine hours, fuel level, oil pressure, and coolant temperature. Additional warning lamps monitor vitals like engine status, low fuel, low battery, low oil pressure, and high hydraulic fluid temperature.

**Back-Up Alarm:**

Provides pulsating sound from 102dB alarm when transmission is in reverse.

**Outrigger Alarm System:**

Two-tone alarm is activated when "jack down" or "beam out" controls are operated.

**Emergency Stop Switch:**

A two-position push button switch located on the top left-hand of the dash panel. Designed to stop the engine & shut down the hydraulic system.

**HYDRAULIC SYSTEM:**

Triple vane pump, delivers 13, 25 & 40 GPM (53, 106 & 151 L/min) at rated 3,000 PSI (207 bar) and 2,500 RPM engine speed. Hydraulic oil tank capacity of 81 gallons (307 L).

**BOOM ASSEMBLY:**

Five-section, high-strength steel construction, equipped with bearing pads for efficient support and extension. Second stage uses a double-acting hydraulic cylinder to telescope sequentially. Double-acting hydraulic cylinder and chain system telescopes boom sections 3, 4, & 5 proportionally. The telescope cylinders and the double-acting boom elevation cylinders are equipped with cylinder-mounted holding valves. Boom angle indicator is on cab side of boom.

**Boom Rotation:**

Heavy-duty ball bearing rotation gear with external teeth. Rotation is powered by hydraulic motor & worm gear drive.

**Boom Hoist:**

Turret-mounted 2-speed planetary gear hoist, is hydraulically powered to provide a low speed bare-drum line pull of 17,850 lbs(8100kg) and a speed of 123 ft/min(37m/min) and a high speed bare-drum line pull of 7,400 lbs(3350kg) and a speed of 300 ft/min(91m/min). Hoist drum is a grooved 10 5/8-inch(270mm) diameter by 17-1/8 in(435mm) long. The hoist includes 370 ft(113m) of 5/8in(16mm) wire rope, cable tensioner, downhaul weight and swivel hook

**Anti-Two-Block Device:**

Prevents damage to hoist rope and/or crane components from pulling load hook against tip.

**Rated Capacity Limiter:**

Warns operator of impending overload with audible & visual signals, stopping boom functions that will cause overloads.

**Four-Part-Line Sheave Block:**

Double-sheave block for 4-part-line requirements. Downhaul weight and hook also included.



# **IC-400-3A**

## **Options**

Listed below are brief descriptions of options available for this product.  
Consult the IC-400-3A Engineering Spec for additional information.

---

**MODEL:**

**IC-400-3A** Industrial Crane

---

**ENGINE OPTIONS:****Spark Arrester Muffler**

Installed in addition to std. muffler.

---

**TIRE OPTIONS:**

**Spare Tire & Wheel**

---

**CHASSIS OPTIONS:****Auxiliary Winch**

Mounted on front outrigger bumper, hydraulically driven with control in operator's console.

**Pintle Hook:**

**Pintle Hook, Rear**  
**Pintle Hook, Front**

**Rearview Mirrors**

One mounted on right-hand deck stake and one mounted on left-hand deck stake.

---

**OPERATOR COMPARTMENT:****Floor Mat**

Vinyl mat with foam backing.

**Noise Reduction Kit**

Includes floor mat and side panels of foam backed vinyl for noise reduction.

**Sun Visor**

Adjustable sun visor for reducing glare mounted in roof of cab.

---

**ELECTRICAL OPTIONS:****Strobe Lights**

Yellow strobe light mounted on each side of turret weight box.

**Camera System**

4-camera video system to assist operator with hard to see viewpoints

**Boom Work Lights**

One work light mounted to boom to light boom tip and one work light mounted to turret to light ground under boom tip.

---

**BOOM ATTACHMENTS:****Boom Extension, 20 Ft., Offset**

Boom stowable. Boom extension is offsettable to 3 different positions; 0 degree (in line), 15 degree and 30 degree offset.

Should you require an option or special equipment not listed please consult your dealer salesperson or

***BRODERSON***  
**Manufacturing Corp.**

14741 West 106th Street  
Lenexa, KS 66215 USA

Tel (913) 888-0606  
Fax (913) 888-8431  
[www.bmccranes.com](http://www.bmccranes.com)

Dimensions and values shown are  
for reference purposes only.  
Specifications subject to change.


**bmc<sup>®</sup>**  
**Load Chart**
**IC-400-3A**  
**Industrial Crane**

| CAPACITIES IN POUNDS FOR OPERATION ON FIRM LEVEL SURFACE |  |                               |          |          |                                 |  |                               |          |          |                                 |   |          |                        |
|--|--|-------------------------------|----------|----------|---------------------------------|--|-------------------------------|----------|----------|---------------------------------|---|----------|------------------------|
| LOAD<br>RADIUS<br>FEET                                   | ON OUTRIGGERS                                    |                               |          |          |                                 |  |                               |          |          |                                 | ON RUBBER   |          | LOAD<br>RADIUS<br>FEET |
|  | OUT & DOWN 360° ROTATION OR IN & DOWN OVER FRONT |                               |          |          |                                 | IN & DOWN 360° ROTATION  |                               |          |          |                                 | FRONT   | 360°     |                        |
|  | BOOM<br>RETRACTED<br>22' BOOM                    | 2ND STAGE<br>OUT- 34'<br>BOOM | 47' BOOM | 59' BOOM | FULLY<br>EXTENDED<br>68.5' BOOM | BOOM<br>RETRACTED<br>22' BOOM  | 2ND STAGE<br>OUT- 34'<br>BOOM | 47' BOOM | 59' BOOM | FULLY<br>EXTENDED<br>68.5' BOOM | ANY BOOM  | ANY BOOM |                        |
|  |  |                               |          |          |                                 |  |                               |          |          |                                 |   |          |                        |
| 8  | 50000  | 36000                         | 36000    |          |                                 | 41900  | 36000                         | 36000    |          |                                 | 24500   | 17100    | 8                      |
| 10   | 42000  | 36000                         | 35200    | 34400    |                                 | 27800  | 26700                         | 26700    | 28300    |                                 | 20400   | 13300    | 10                     |
| 12   | 36000  | 36000                         | 31900    | 28100    |                                 | 20400  | 19300                         | 19300    | 20700    |                                 | 17300   | 10600    | 12                     |
| 14   | 35200  | 34200                         | 28600    | 26200    | 24300                           | 15700  | 14800                         | 14800    | 15900    | 16000                           | 14800   | 8600     | 14                     |
| 16   | 30200  | 29200                         | 25200    | 22900    | 21800                           | 12500  | 11700                         | 11700    | 12700    | 12900                           | 12800   | 7000     | 16                     |
| 18   | 23600  | 23600                         | 22300    | 20800    | 19800                           | 10100  | 9400                          | 9400     | 10400    | 10600                           | 11200   | 5700     | 18                     |
| 20   |  | 21200                         | 20500    | 19300    | 17800                           |  | 7600                          | 7600     | 8500     | 8900                            | 9500  | 4700     | 20                     |
| 22   |  | 19100                         | 18600    | 17900    | 16200                           |  | 6100                          | 6100     | 7000     | 7500                            | 7900  | 3800     | 22                     |
| 24   |  | 17200                         | 17200    | 16300    | 15000                           |  | 4900                          | 4900     | 5900     | 6400                            | 6700  | 3100     | 24                     |
| 26   |  | 15400                         | 15400    | 14400    | 13700                           |  | 3900                          | 3900     | 4900     | 5400                            | 5700  | 2400     | 26                     |
| 28   |  | 13400                         | 13400    | 13300    | 12600                           |  | 3200                          | 3200     | 4200     | 4700                            | 4800  | 2300     | 28                     |
| 30   |  | 11800                         | 11700    | 12200    | 11600                           |  | 2600                          | 2600     | 3400     | 3900                            | 4200  | 1400     | 30                     |
| 32   |  |                               | 10600    | 11300    | 10700                           |  |                               | 2100     | 2900     | 3300                            | 3700  | 1200     | 32                     |
| 36   |  |                               | 8600     | 9100     | 9100                            |  |                               | 1400     | 2000     | 2400                            | 2800  | 800      | 36                     |
| 40   |  |                               | 7300     | 7500     | 7900                            |  |                               | 900      | 1300     | 1600                            | 2300  | ---      | 40                     |
| 42   |  |                               | 6700     | 6800     | 7400                            |  |                               | 800      | 1000     | 1400                            | 2100  | ---      | 42                     |
| 44   |  |                               |          | 6300     | 6800                            |  |                               |          | 800      | 1200                            | 1900  | ---      | 44                     |
| 48   |  |                               |          | 5400     | 5500                            |  |                               |          | ---      | 700                             | 1500  | ---      | 48                     |
| 52   |  |                               |          | 4700     | 4700                            |  |                               |          | ---      | ---                             | 1200  | ---      | 52                     |
| 54   |  |                               |          | 4400     | 4400                            |  |                               |          | ---      | ---                             | 1100  | ---      | 54                     |
| 56   |  |                               |          |          | 4000                            |  |                               |          |          | ---                             | 1000  | ---      | 56                     |
| 60   |  |                               |          |          | 3600                            |  |                               |          |          | ---                             | ---   | ---      | 60                     |
| 64   |  |                               |          |          | 3200                            |  |                               |          |          | ---                             | ---   | ---      | 64                     |
| 68   |  |                               |          |          | 3100                            | CAPACITIES ON OUTRIGGERS OUT & DOWN ARE 85% OF TIPPING LOADS. CAPACITIES ON IN & DOWN OUTRIGGERS ARE LESS THAN 85% OF TIPPING LOADS. CAPACITIES ON RUBBER ARE 75% OF TIPPING LOADS. CAPACITIES BELOW BOLD LINE ARE LIMITED BY TIPPING. OTHER CAPACITIES ARE LIMITED BY STRUCTURAL OR HYDRAULIC CAPABILITY. |                               |          |          |                                 | HYDRAULIC FUNCTIONS OPERATE AT MID-SPEED ON RUBBER IF CRANE IS NOT IN FULL SPEED. |          |                        |
| 72   |  |                               |          | 2800     |                                 |  |                               |          |          |                                 |   |          |                        |
| 76   |  |                               |          | 2400     |                                 |  |                               |          |          |                                 |   |          |                        |
| 80   |  |                               |          | 2100     |                                 |  |                               |          |          |                                 |   |          |                        |
| 84   |  |                               |          | 1900     |                                 |  |                               |          |          |                                 |   |          |                        |
| BOOM<br>EXT.<br>OFFSET<br>ANGLE                          | 20' BOOM EXTENSION STRUCTURAL CAPACITIES         |                               |          |          |                                 |  |                               |          |          |                                 |   |          |                        |
|  | MAIN BOOM ANGLE                                  |                               |          |          |                                 |  |                               |          |          |                                 |   |          |                        |
|  | 0°   | 15°                           | 30°      | 40°      | 50°                             | 60°  | 70°                           | 75°      |          |                                 |   |          |                        |
| 0°   | 2600   | 2750                          | 3000     | 3400     | 4100                            | 5100   | 6200                          | 7000     |          |                                 |   |          |                        |
| 15°  | ---  | 2500                          | 2600     | 2700     | 2900                            | 3300   | 4300                          | 4800     |          |                                 |   |          |                        |
| 30°  | ---  | ---                           | 2300     | 2400     | 2500                            | 2700   | 3200                          | 3400     |          |                                 |   |          |                        |

CAPACITIES ON OUTRIGGERS OUT & DOWN ARE 85% OF TIPPING LOADS. CAPACITIES ON IN & DOWN OUTRIGGERS ARE LESS THAN 85% OF TIPPING LOADS. CAPACITIES ON RUBBER ARE 75% OF TIPPING LOADS. CAPACITIES BELOW BOLD LINE ARE LIMITED BY TIPPING. OTHER CAPACITIES ARE LIMITED BY STRUCTURAL OR HYDRAULIC CAPABILITY.

HYDRAULIC FUNCTIONS OPERATE AT MID-RANGE SPEED ON RUBBER OR IF CRANE IS NOT LEVEL.

BOOM EXTENSION MAY NOT LIFT LOADS ON RUBBER.



# bmc<sup>®</sup>

## Load Chart

# IC-400-3A

## Industrial Crane

| LOAD<br>RADIUS<br>METERS        | ON OUTRIGGERS                                    |                                  |             |             |                                  |  |                                  |             |             |                                  | ON RUBBER  |             | LOAD<br>RADIUS<br>METERS |
|---------------------------------|--|----------------------------------|-------------|-------------|----------------------------------|--|----------------------------------|-------------|-------------|----------------------------------|--|-------------|--------------------------|
|                                 | OUT & DOWN 360° ROTATION OR IN & DOWN OVER FRONT |                                  |             |             |                                  | IN & DOWN 360° ROTATION  |                                  |             |             |                                  | FRONT  | 360°        |                          |
|                                 | BOOM<br>RETRACTED<br>6.7 m BOOM                  | 2ND STAGE<br>OUT- 10.4 m<br>BOOM | 14.3 m BOOM | 18.0 m BOOM | FULLY<br>EXTENDED<br>20.9 m BOOM | BOOM<br>RETRACTED<br>6.7 m BOOM  | 2ND STAGE<br>OUT- 10.4 m<br>BOOM | 14.3 m BOOM | 18.0 m BOOM | FULLY<br>EXTENDED<br>20.9 m BOOM | ANY<br>BOOM  | ANY<br>BOOM |                          |
| 2.4                             | 22700  | 16300                            | 16300       |             |                                  | 19000  | 16300                            | 16300       |             |                                  | 11000  | 7700        | 2.4                      |
| 3.0                             | 19300  | 16300                            | 16000       | 15600       |                                  | 12900  | 12400                            | 12300       | 12800       |                                  | 9300   | 6100        | 3.0                      |
| 3.5                             | 16900  | 16300                            | 14800       | 13200       |                                  | 10000  | 9600                             | 9500        | 9900        |                                  | 8100   | 5000        | 3.5                      |
| 4.0                             | 16100  | 15900                            | 13600       | 12200       | 9900                             | 7900   | 7500                             | 7400        | 8100        | 7200                             | 7100   | 4200        | 4.0                      |
| 4.5                             | 15100  | 14600                            | 12400       | 11300       | 9500                             | 6500   | 6100                             | 6000        | 6600        | 6700                             | 6300   | 3500        | 4.5                      |
| 5.0                             | 13100  | 12700                            | 11100       | 10100       | 8700                             | 5400   | 5000                             | 5000        | 5500        | 5600                             | 5600   | 3000        | 5.0                      |
| 5.5                             | 10500  | 10600                            | 10100       | 9400        | 8000                             | 4600   | 4200                             | 4200        | 4700        | 4800                             | 5000   | 2500        | 5.5                      |
| 6.0                             | 2100   | 9700                             | 9400        | 8800        | 7400                             |  | 3500                             | 3500        | 3900        | 4100                             | 4400   | 2100        | 6.0                      |
| 7.0                             | 1900   | 8200                             | 8100        | 7700        | 6300                             |  | 2400                             | 2400        | 2800        | 3100                             | 3300   | 1500        | 7.0                      |
| 8.0                             | 1600   | 6800                             | 6800        | 6400        | 5500                             |  | 1700                             | 1700        | 2100        | 2400                             | 2500   | 1000        | 8.0                      |
| 9.0                             | 1500   | 5400                             | 5400        | 5600        | 4800                             |  | 1200                             | 1200        | 1600        | 1800                             | 1900   | 600         | 9.0                      |
| 10.0                            | 1300   | 1700                             | 4500        | 4900        | 4200                             |  |                                  | 800         | 1100        | 1400                             | 1500   | 400         | 10.0                     |
| 11.0                            | 1200   | 1600                             | 3800        | 4100        | 3700                             |  |                                  | 600         | 800         | 1000                             | 1200   | ---         | 11.0                     |
| 12.0                            |  | 1500                             | 3300        | 3400        | 3300                             |  |                                  | 400         | 600         | 700                              | 1000   | ---         | 12.0                     |
| 13.0                            |  | 1300                             | 2900        | 3000        | 2900                             |  |                                  | ---         | 300         | 500                              | 800  | ---         | 13.0                     |
| 14.0                            |  | 1200                             | 1600        | 2600        | 2600                             |  |                                  |             | ---         | 400                              | 700  | ---         | 14.0                     |
| 15.0                            |  | 1200                             | 1500        | 2300        | 2300                             |  |                                  |             | ---         | ---                              | 600  | ---         | 15.0                     |
| 16.0                            |  |                                  | 1400        | 2100        | 2000                             |  |                                  |             | ---         | ---                              | 500  | ---         | 16.0                     |
| 16.5                            |  |                                  | 1300        | 2000        | 1900                             |  |                                  |             | ---         | ---                              | 400  | ---         | 16.5                     |
| 17.0                            |  |                                  | 1300        | 2000        | 1800                             |  |                                  |             |             | ---                              | 400  | ---         | 17.0                     |
| 18.0                            |  |                                  | 1200        | 1900        | 1600                             |  |                                  |             |             | ---                              | ---  | ---         | 18.0                     |
| 19.0                            |  |                                  | 1200        | 1700        | 1400                             |  |                                  |             |             | ---                              | ---  | ---         | 19.0                     |
| 19.5                            |  |                                  |             | 1600        | 1300                             |  |                                  |             |             | ---                              | ---  | ---         | 19.5                     |
| 21.0                            |  |                                  |             | 1400        | 1300                             | CAPACITIES ON OUTRIGGERS OUT & DOWN ARE 85% OF TIPPING LOADS. CAPACITIES ON IN & DOWN OUTRIGGERS ARE LESS THAN 85% OF TIPPING LOADS. CAPACITIES ON RUBBER ARE 75% OF TIPPING LOADS. CAPACITIES BELOW BOLD LINE ARE LIMITED BY TIPPING OR BOOM EXTENSION STRUCTURAL CAPABILITY. OTHER CAPACITIES ARE LIMITED BY STRUCTURAL OR HYDRAULIC CAPABILITY. |                                  |             |             |                                  | DO NOT LIFT LOADS ON BOOM EXTENSION WHEN ON RUBBER OR OVER SIDE ON IN & DOWN OUTRIGGERS. |             |                          |
| 22.0                            |  |                                  | 1200        | 1200        |                                  |  |                                  |             |             |                                  |  |             |                          |
| 23.0                            |  |                                  |             | 1100        |                                  |  |                                  |             |             |                                  |  |             |                          |
| 24.0                            |  |                                  |             | 1000        |                                  |  |                                  |             |             |                                  |  |             |                          |
| 25.6                            |  |                                  |             | 800         |                                  |  |                                  |             |             |                                  |  |             |                          |
| BOOM<br>EXT.<br>OFFSET<br>ANGLE | 6.1 m BOOM EXTENSION STRUCTURAL CAPACITIES       |                                  |             |             |                                  |  |                                  |             |             |                                  |  |             |                          |
|                                 | MAIN BOOM ANGLE                                  |                                  |             |             |                                  |  |                                  |             |             |                                  |  |             |                          |
|                                 | 0°   | 15°                              | 30°         | 40°         | 50°                              | 60°  | 70°                              | 75°         |             |                                  |  |             |                          |
|                                 | 0°   | 1200                             | 1200        | 1300        | 1500                             | 1800   | 2300                             | 2800        | 3100        |                                  |  |             |                          |
| 15°                             | ---  | 1100                             | 1200        | 1200        | 1300                             | 1500   | 1900                             | 2200        |             |                                  |  |             |                          |
| 30°                             | ---  | ---                              | 1000        | 1100        | 1100                             | 1200   | 1400                             | 1500        |             |                                  |  |             |                          |

**CAPACITIES ON OUTRIGGERS OUT & DOWN ARE 85% OF TIPPING LOADS. CAPACITIES ON IN & DOWN OUTRIGGERS ARE LESS THAN 85% OF TIPPING LOADS. CAPACITIES ON RUBBER ARE 75% OF TIPPING LOADS. CAPACITIES BELOW BOLD LINE ARE LIMITED BY TIPPING OR BOOM EXTENSION STRUCTURAL CAPABILITY. OTHER CAPACITIES ARE LIMITED BY STRUCTURAL OR HYDRAULIC CAPABILITY.**

**DO NOT LIFT LOADS ON BOOM EXTENSION WHEN ON RUBBER OR OVER SIDE ON IN & DOWN OUTRIGGERS.**