

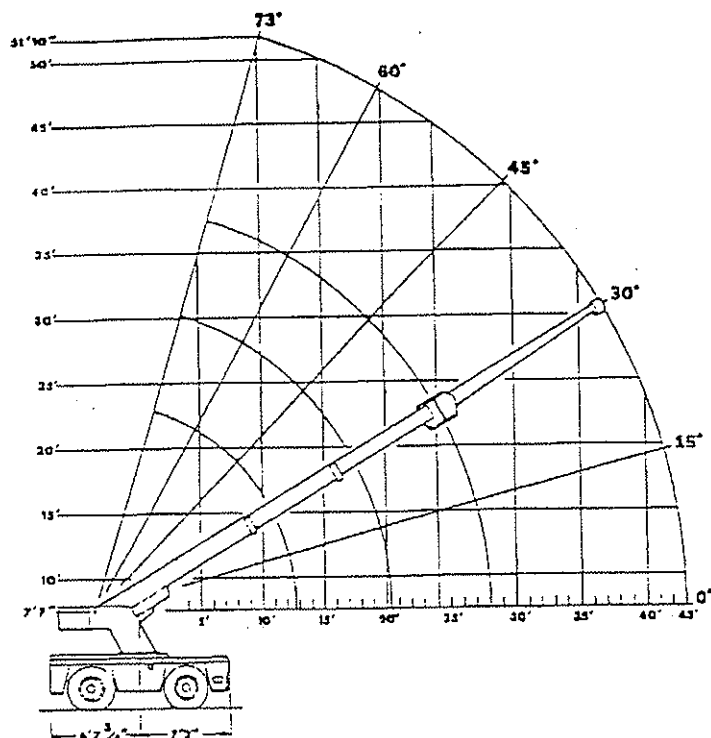


02/27/02 12:57 PM 012 898 R431

BRODERSON MFG

0003

# IC-180



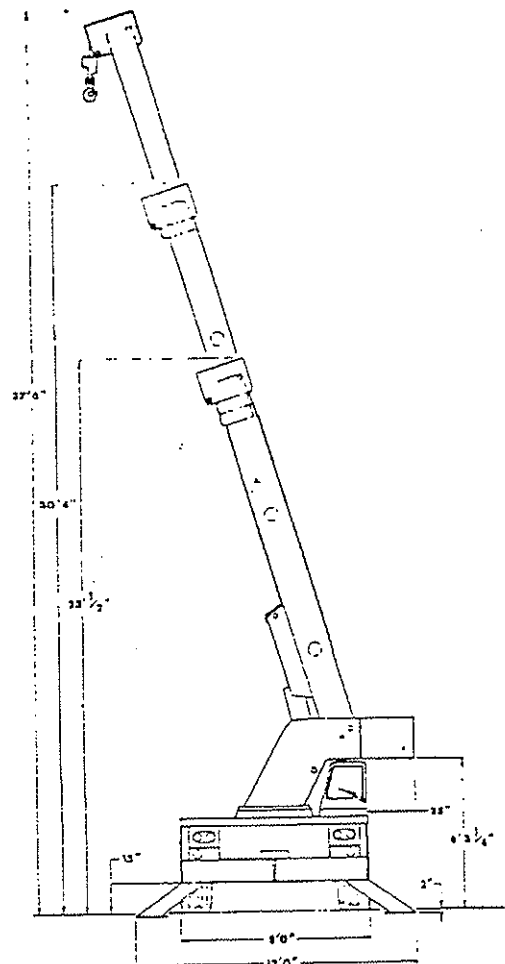
USE SINGLE  
PART LOAD  
LINE FOR  
LOADS TO  
7500 LBS.



USE TWO  
PART LOAD  
LINE FOR  
LOADS TO  
15000 LBS.



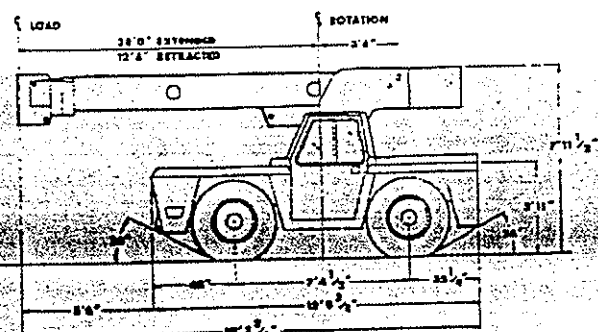
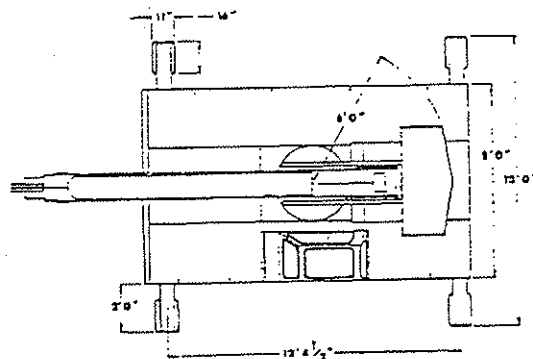
USE FOUR  
PART LOAD  
LINE FOR  
LOADS TO  
30000 LBS.



ALL CAPACITIES FOR 360° ROTATION

LOAD RADIUS FEET	BOOMS RETRACTED ON O/R*	BOOMS EXTENDED		15' BOOM EXTENSION INSTALLED	
		ON RUBBER	ON O/R*	ON RUBBER	ON O/R*
6	30000	14000	30000	7500	7500
8	25000	11000	24000	7500	7500
10	20000	9400	20000	7100	7100
12	16000	8200	16000	6150	6150
14		6800	11950	5425	5425
16		5700	10500	4850	4850
19		4325	8875	4175	4175
22		3350	7600	3675	3675
25		2775	6350	3275	3275
28		2400	5300	2950	3000
31				2350	3000
34				1925	3000
36				1475	3000
43				1100	2800

\*OUTRIGGERS



**General:**

Weight 25,910 lbs.

**Travel Speeds**

Gear	MPH
1st	6
2nd	11
3rd	21

**Drawbar pull:**

Gear	Pounds
1st	6,360
2nd	2,860
3rd	1,600

**Turning radius**

(C/L of outside steering wheel) 18'4"

Aisle width for 90° turn 11'4"

**Engine:**

	Std.	Opt.
Make	Chrysler	John Deere
Model	HB-225	4219D
Type	Gas	Diesel
No. Cyl.	6	4
Displacement	225	219
HP@ Governed Speed	97	70

**Electrical:**

12 volt system

**Lighting group:**

1 pair headlights with Hi and Lo beams  
Integral tail, brake and turn signals and front turn signals

**Instrument group:**

Fuel, ammeter, oil pressure, water temperature, converter  
oil temperature gauges and hourmeter

**Fuel Tank:**

30 gallon capacity

**Transmission:****3 speed**

Make	Borg Warner
Model	T-18

**Gear ratios**

1	6.324:1
2	3.092:1
3	1.686:1

**Reversing gear box**

Make	Borg Warner
Model	PR-1

An oil cooler for torque converter and reversing gear box oil  
is standard equipment

**Torque Converter:**

Stall torque ratio of 2.0:1

**Steering:**

Full hydraulic orbitrol unit with two double-acting, 3 inch  
cylinders attached to rear axle.

**Axles:****Drive axle**

Make International Harvester  
Pinion and gear ratio 7.17:1  
Location Front

**Steering axle**

Make Rockwell  
Location Rear

**Brake:**

Service - 4-wheel drum type brakes  
Parking - Band type - mounted on drive line

**Tires:**

Standard - 15.00 x 22.5, 16-ply rating, Highway tread  
Optional - Grizzly Supersoft 10.00 x 20 Solid Rubber

**Crane****Boom Movement**

Rotation - Continuous  
Elevation - 0° - 73°  
Extension - 12'8" - 28'

**Boom Speeds:**

Rotation - 1.8 RPM  
Elevation - 21 seconds  
Extension - 18 seconds

**Boom Assembly:**

Three section boom assembly equipped with bearing pad,  
double-acting hydraulic cylinders equipped with direct-  
connected holding valves and boom angle indicator on  
each side of boom.

**Boom Rotation:**

Heavy-duty ball bearing rotation gear with external teeth  
support boom. Rotation is powered by hydraulic motor and  
worm gear drive.

**Boom Winch:**

Turret-mounted  
Hydraulic powered  
Bare drum line pull of 10,000 lbs.  
Winch line speed - 110 ft. per minute  
230 ft. of 1/2 in. wire rope, downhaul weight and swivel hook,  
standard.

**Cargo Deck:**

69 sq. ft. deck area  
17,000 lbs. maximum capacity  
Steps located on front corners

**Hydraulic System:**

Tandem pump, direct-driven by engine crankshaft, rated at  
22 and 34 G.P.M. at rated R.P.M.  
Hydraulic oil tank capacity - 34 gallons

**Outriggers:**

Four hydraulic outriggers of box beam construction with  
direct connected holding valves  
Independent controls for left and right hand outriggers  
Outrigger pad dimension 11" x 18"



#### SPEC. FOR 15 TON CARRY DECK

BLOCK	250lbs	2 sheave /block height 48"
BALL	n/a	no ball with this crane/use block
CABLE	1/2"	Swi of 7500lbs.single line/230 ft. total length
HEIGHT	7' 12"	measured from ground to highest point
WIDTH	8"	Width is with outriggers retracted
LENGTH	19' 4"	Length is from retracted boom tip, to rear of crane
WEIGHT	25,910	

#### OTHER

- 12" wide /outriggers extended
- 6' 8" to center of rotation from rear of crace
- 7' 2" to center of rotation to front of crane
- deck height 3' 11" from ground
- 2' overhang off the sides,no overhang front or rear
- 17000 total deck capacity
- 69 square foot deck area