

**AC36-234 Articulating Crane****Specifications**

Number of Extensions	1-Hydraulic	2-Hydraulic	3-Hydraulic	4-Hydraulic
Crane Rating*	235,000 ft-lb (32.4 tm)	235,000 ft-lb (32.4 tm)	235,000 ft-lb (32.4 tm)	235,000 ft-lb (32.4 tm)
Max. Horizontal Reach	25'7" (7.8 m)	32'2" (9.8 m)	38'9" (11.89 m)	48'7" (14.8 m)
Max Vertical Reach Hydraulic	35'5" (10.8 m)	45' (13.7 m)	54'10" (16.7 m)	58'5" (17.8 m)
Max. Capacity	25,740 lb (11700 kg)	25,080 lb (11400 kg)	24,420 lb (11100 kg)	23,760 lb (10800 kg)
Max Capacity @ Max Reach	8,760 lb (3980 kg)	6,622 lb (3010 kg)	5,100 lb (2320 kg)	4,000 lb (1800 kg)
Crane Weight**	8,400 lb (3280 kg)	8,900 lb (4040 kg)	9,400 lb (4270 kg)	9,800 lb (4440 kg)
Number of Extensions	5-Hydraulic	6-Hydraulic	7-Hydraulic	
Crane Rating*	235,000 ft-lb (32.4 tm)	235,000 ft-lb (32.4 tm)	235,000 ft-lb (32.4 tm)	
Max. Horizontal Reach	54'5" (16.47 m)	61'10" (18.85 m)	69'4" (21.13 m)	
Max Vertical Reach Hydraulic	65'8" (20 m)	72'10" (22.2 m)	80'5" (24.5 m)	
Max. Capacity	23,200 lb (14550 kg)	22,700 lb (10300 kg)	22,440 lb (10200 kg)	
Max Capacity @ Max Reach	3,100 lb (1410 kg)	2,440 lb (1,110 kg)	1,940 lb (880 m)	
Crane Weight**	10,120 lb (4600 kg)	10,400 lb (4720 kg)	10,700 lb (4840 kg)	

\*Crane rating (ft-lb) is the rated load (lb) x the respective distance (ft) from centerline of rotation with all extensions retracted and the inner and outer booms in a horizontal position, per ANSI B30.22.

\*\*Crane weight does not include outrigger

**Specifications**

Outrigger Foot Diameter	7.09" (180 mm)		Optimum Pump Capacity	12 gpm (45 L/min)
Crane Storage Height	92.72" (2355 mm)		System Pressure	4,423 PSI (305 BAR)
Mounting Space***	46.06" (1170 mm)		Outrigger Extension Span	
Rotational Torque	2,725 ft-lb (3695 daNm)		Standard (manual out, hydraulic down)	20'4" (6.2 m)
Rotation	400°			
Oil Reserve Capacity	42 gal (160L)			

\*\*\*Allow an additional 10" between the cab and crane base for swing clearance.

**Minimum Chassis Specifications**

Gross Vehicle Weight Rating (GVWR)	52,896 lb
Resistance to Bending Moment (RBM)	1,708,000 in-lb

**Notes**

A. Weight distribution calculations are required to determine final axle loading. The use of service bodies, diesel engines, or longer wheelbase, can increase the minimum chassis requirements. Please contact Auto Crane for details.

B. GAWR (Gross Axle Weight Rating) is the total weight of the vehicle including the (chassis, driveline, occupants, cargo, etc. ) that is allowed by the manufacturer requirements, for the vehicle to go down the road safely. This is a critical factor in purchasing a truck for the crane application. All chassis and crane applications



4707 N. Mingo Road  
Tulsa, OK 74117  
918-836-0463  
www.autocrane.com

AC36-234



## AC36-234 Articulating Crane

### System Characteristics

#### Rotation System

Our Articulating Cranes utilize a rack and pinion rotation system which provides high torque for demanding applications. The column turns on bushings made of an advanced composite material for long service life. The rotation cylinders are protected by a load holding valve and flow controls to ensure safe and precise operation.

#### Cylinder Holding Valves

Flanged load holding valves on hydraulic cylinders provide smooth load control and load holding. In the event of a hose failure, they lock the cylinder in place to prevent uncontrolled crane movement or falling loads.

#### Hydraulic Overload System

Providing the Hydraulic Overload protection are main relief and port relief valves, as well as counterbalance valves.

#### Hydraulic System

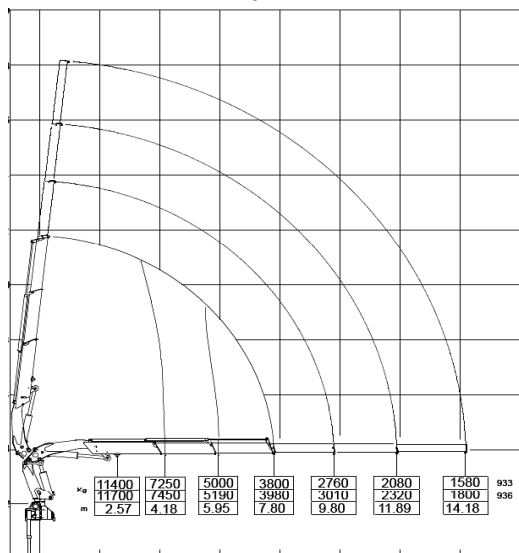
The hydraulic system is open-center as standard. Included on the crane is a hydraulic oil reservoir, return line filter, high-pressure filter(1), and control valve with dual-side controls(2). An optional closed-center valve is available on request.

#### Exceptions

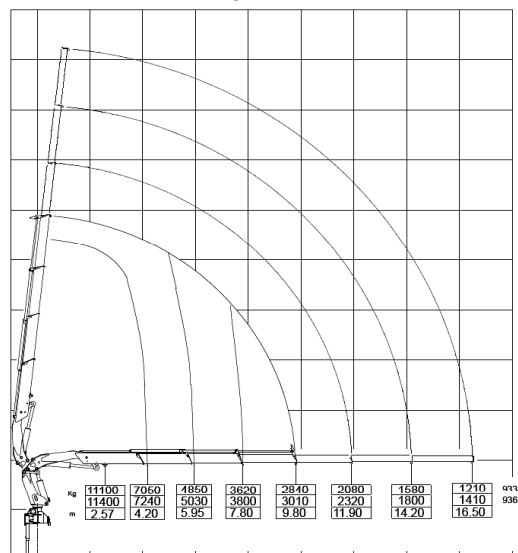
- (1) Cranes with manual controls do not have high pressure filter
- (2) Cranes with radio controls do not have dual-side controls

### Capacity Charts

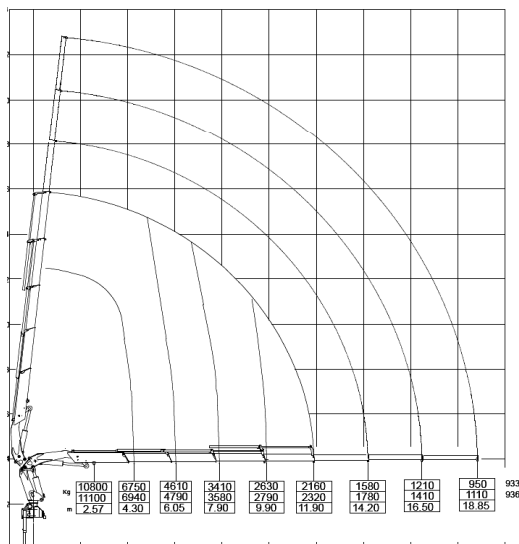
AC36-234 2 Hydraulic Extension



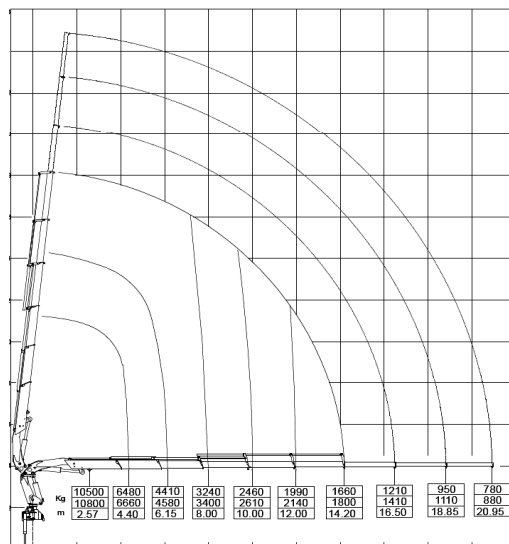
AC36-234 3 Hydraulic Extension



AC36-234 4 Hydraulic Extension



AC36-234 5 Hydraulic Extension

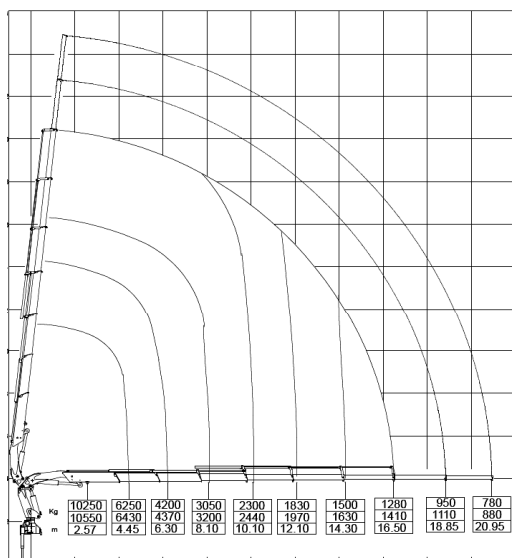




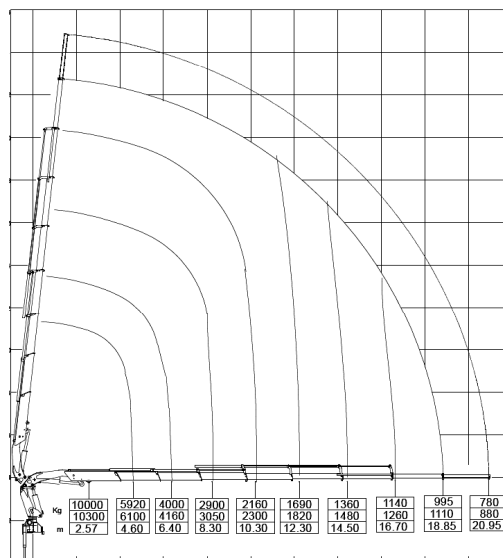
## AC36-234 Articulating Crane

### Capacity Charts

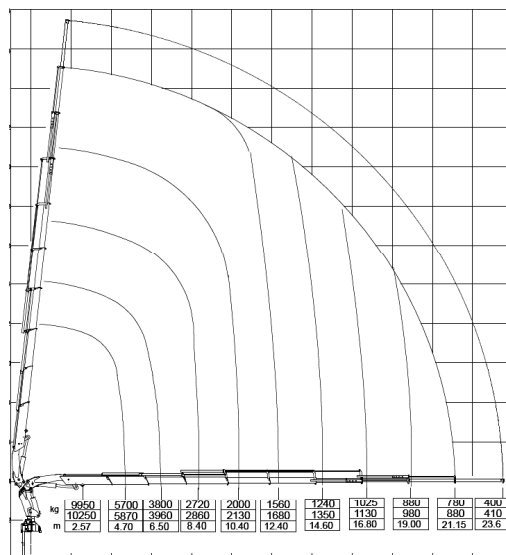
AC36-234 6 Hydraulic Extensions



AC36-234 7 Hydraulic Extensions



AC36-234 8 Hydraulic Extensions



4707 N. Mingo Road  
Tulsa, OK 74117  
918-836-0463  
[www.autocrane.com](http://www.autocrane.com)

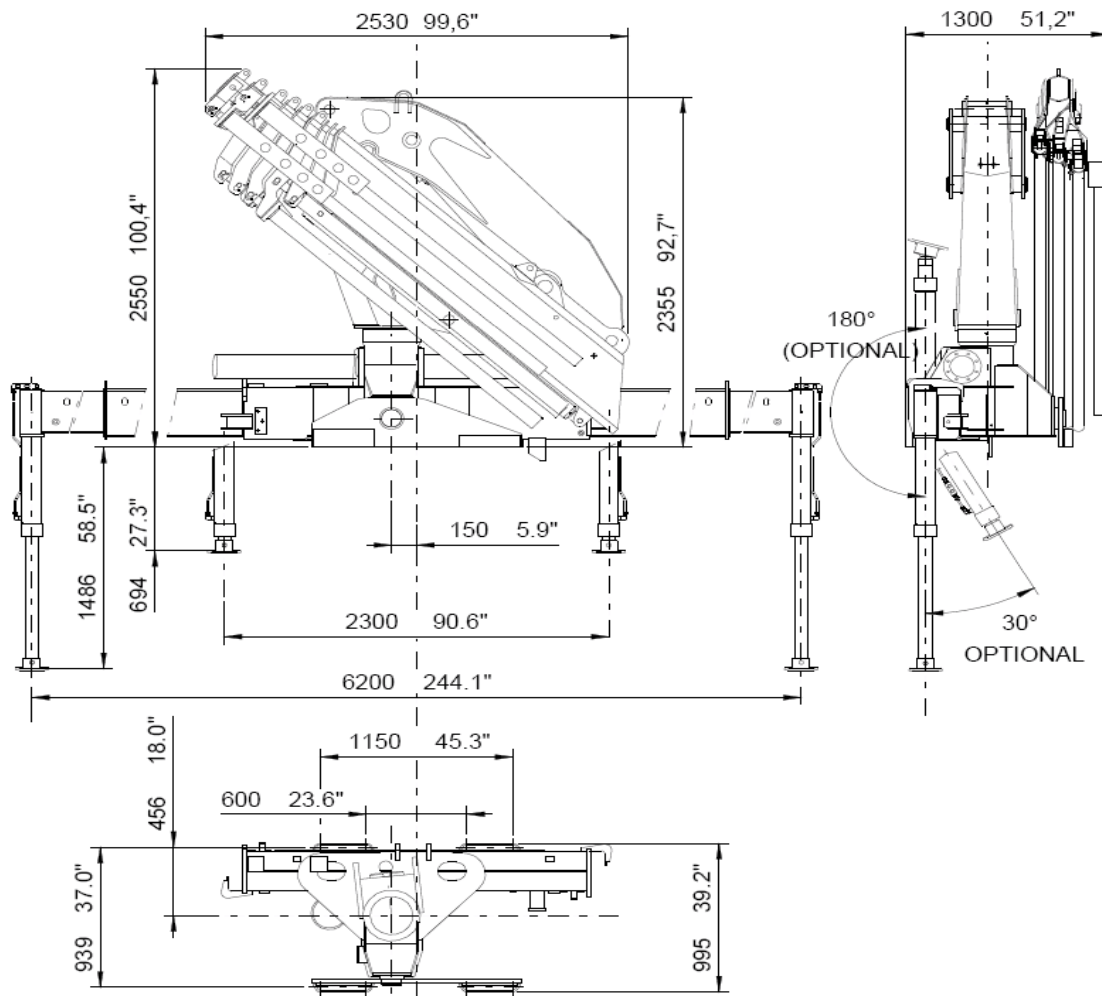
AC36-234



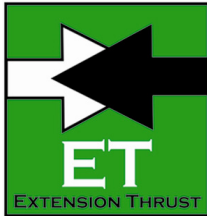
## AC36-234 Articulating Crane

### Geometric Configurations (Dimensions)

AC36-234 8 Hydraulic Extensions



### Special Features (on select models)



4707 N. Mingo Road  
Tulsa, OK 74117  
918-836-0463  
[www.autocrane.com](http://www.autocrane.com)

AC36-234